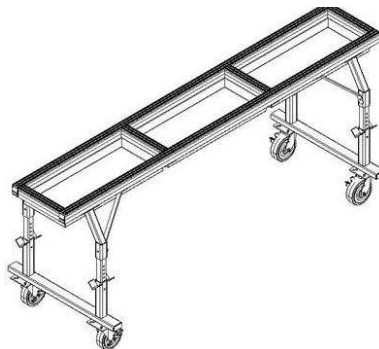
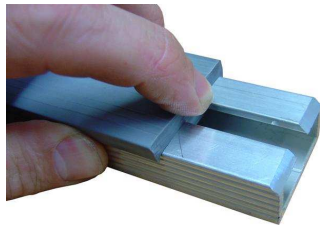
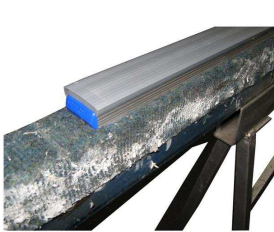


THE GLASS RACKING COMPANY

Innovation by Design

SOLUTIONS FOR WINDOW FABRICATORS

SPECIALISING IN LIFTING, STORING, PROCESSING AND TRANSPORTING WINDOWS AND GLASS



GET FULL PRODUCT CATALOGUES ONLINE AT
WWW.THEGLASSRACKINGCOMPANY.COM

GET FULL PRODUCT CATALOGUES ONLINE AT
WWW.THEGLASSRACKINGCOMPANY.COM

FACTORY HANDLING



A range of trolleys for moving glass, DGUs, window frames and sashes around your factory. Includes a unique Tooth DGU trolley, harps, and A frames with safety arms for securing the load



Our trolleys use raised polymer base blocks to keep the window frames and glass away from damaging swarf and debris



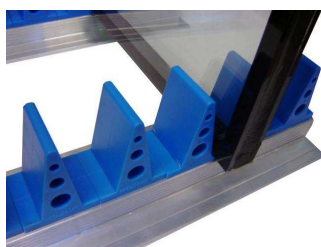
A range of engineer certified site lifting frames so that window frames can be loaded direct from the factory onto the transport frame, transported to site, and lifted into a building



The Glass Racking Company cut length tree trolley for horizontal storage and movement of long cut lengths. These are also available with four masts for extra long lengths and pack storage.



Light freestanding overhead crane systems for loading and unloading, and moving packs up to 1000kg around the factory



The Glass Racking Company tooth storage system simplifies storage and handling of DGU's and sashes by securely storing them in a toaster format. Variable widths and sizes of DGUs and sashes are accommodated. Available as trolleys or fixed.



Safety fencing options are available to separate factory areas, and keep factories safe

TRESTLES AND ASSEMBLY TABLES



Assembly and glazing tables with non-marking polymer work surfaces to avoid swarf damage to window frames. Optional tilting function to allow semi-vertical loading, unloading and glazing as well as lying flat for fabrication. Access to the window frame from both sides to aid fabrication

A range of trestles on which to manufacture window frames. All have polymer work surfaces, options for height and length adjustment, and quality castors. These are high quality trestles to assist with health and safety and productivity.

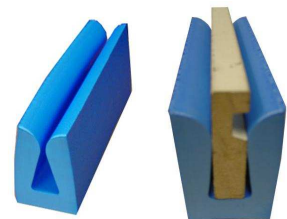


POLYMER WORK SURFACE



The Glass Racking Company "Trestle Topper" is secured directly onto the top of existing trestles and assembly tables. It provides a non-marking polymer work surface which is free from swarf and reduces damage to window frames during fabrication. Small Joint Sealer and glues can be easily cleaned off providing a flat work surface. Trestle Topper is a far better work surface than traditional carpet

STORAGE AND DISPLAY



A range of storage systems for Window Fabrication factories, and display systems for showrooms

The Glass Racking Company Pro-foam is designed to stop storage and transport damage to windows. Supplied in 200mm lengths and fitting to 19mm, 25mm and 30mm reveals.

MULTI-PURPOSE WINDOW AND GLASS SITE VEHICLES

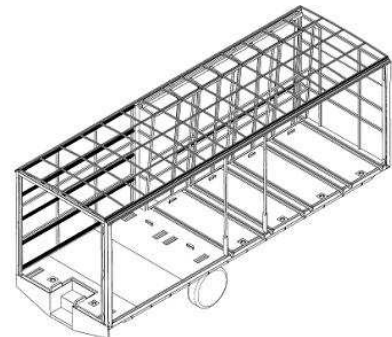


The Glass Racking Company Glazier (3.5M body) and Contractor (4.5M body) provide a lockable workshop, storage for large glass and window frames on the external racks, plus bulk storage of smaller work (window frames, glass, and tools) and up to three installers to site.

Both vehicles can be fitted with The Glass Racking Company window transportation system which provides a pole based retention system to speed load and unload times, reduce transit damage to window frames, and reduce the need for specialist skills to prepare a load for transportation.



DELIVERY VEHICLES



The Glass Racking Company delivery vehicles have external racks plus full length internal racks for mass storage of frames and glass. Trucks and trailers with demountable frames are also available, as are vans. All can be fitted or retrofitted with the window transportation system.

Window Fabrication Solutions

Contact us today to discuss your window factory handling and transportation needs.

Window Fabricator Solutions

July 2011



The Glass Racking Company

Christchurch:- 03-3603373, Melbourne:- 0427226653, Brisbane:- 0419714005, Perth:- 0449911946

Email: info@theglassrackingcompany.com www.theglassrackingcompany.com

