

### WickRight Kit #1A – Capstone Vented Drip Edge Kit for 8" Parapets with Capstones

WickRight Passive Ventilation Systems help keep masonry parapet walls dry. Patented Capstone Vented Drip Edge is a permanent ventilation system for use under capstones on most masonry walls. Installation protects the top of parapets from rain seeping through capstones. Wind flows through Vented Drip Edge to dry walls via circulation and draws moisture vapor up and out of masonry and wall core. WickRight Parapet Vents are field proven with over 150 installations since 2012 in Chicago, Milwaukee, Tampa and Northern California with no call backs.

KITS save time by bundling all the WickRight materials needed.

#### Kit #1A includes:

1. **WickRight Capstone Vented Drip Edge** 2 lengths, one for each side of parapet
  - **Length:** Sold in 10-foot length
  - **Kit Price:** Call for quote
  - **Materials:** 26-gauge Stainless steel, polypropylene vent panel
  - **Custom Options:** Kynar painted galvanized steel and copper available, call for
2. **WickRight Vapor Permeable Membrane** – protects parapet from wind driven rain, allows moisture vapor to exit, does not allow water to enter
  - **Length:** Sold in 200' Rolls
  - **Widths:** 9" rolls – single wythe
  - **Materials:** Polypropylene, spun-bound, waterproof desiccant finish one side
  - **Price per roll:** 9"–\$100
  - **Custom Options:** custom widths available, call to discuss
  - **Requirements:** Must be installation under Vented Drip Edge

**How to Order:** Perimeter measurement plus 10%.

Example – wall is 125' x 110% = 137.5' Order 140'

Kit 1A comes with 2 lengths of Vented Drip Edge for installation on both sides of the parapet wall and one roll of membrane per every 200' of kit ordered.

#### Installation:

1. Install Membrane, desiccant side up on top of parapet
2. Install Vented Drip Edge on both sides of a parapet wall open side down on top of Membrane
3. Install vinyl self-adhered flashing on top of Vented Drip Edge

#### Warranty Information:

20-year limited, transferable manufacturer warranty available when installed by WickRight authorized installer.

#### Test Results:

**Vented Drip Edge:** Crush Resistance 323 lbs per ½"x 4" x 8" sample

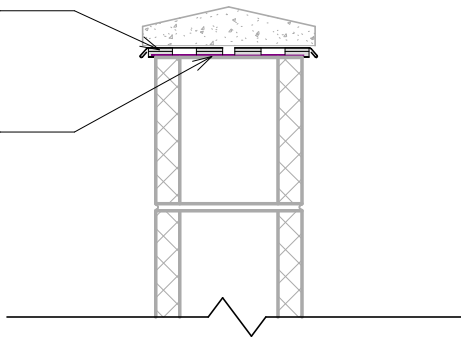
#### Membrane:

- ASTM E96 – Water Vapor Transmission: 107.8 perm
- AATCC TM-127 – Hydrostatic Resistance: 19.9 psi

**Resources:** Installation Guide available at [www.WickRight.com](http://www.WickRight.com)

WickRight™ Capstone Vented  
Drip Edge

WickRight™ Vapor  
Permeable Membrane



### WickRight Kit #1B – Capstone Vented Drip Edge Kit for Parapets wider than 9" with Capstones

WickRight Passive Ventilation Systems help keep masonry parapet walls dry. Patented Capstone Vented Drip Edge is a permanent ventilation system for use under capstones on most masonry walls. Installation protects the top of parapets from rain seeping through capstones. Wind flows through Vented Drip Edge to dry walls via circulation and draws moisture vapor up and out of masonry and wall core. WickRight Parapet Vents are field proven with over 150 installations since 2012 in Chicago, Milwaukee, Tampa and Northern California with no call backs.

KITS save time by bundling all the WickRight materials needed.

#### Kit #1B includes:

- WickRight Capstone Vented Drip Edge** 2 lengths, one for each side of parapet
  - Length:** Sold in 10-foot lengths x 2 for Kit
  - Kit Price:** \$30.60 L/F - Call for quote raw material prices fluctuate
  - Materials:** 26-gauge Stainless steel, polypropylene vent panel
  - Custom Options:** Kynar painted galvanized steel and copper available, call for quote
- WickRight Vapor Permeable Membrane** – protects parapet from wind driven rain, allows moisture vapor to exit, does not allow water to enter
  - Length:** Sold in 200' Rolls
  - Widths:** 15" rolls – multiple-wythe, 20" rolls
  - Kit Price per roll:** 15" – \$150, 20" – \$200
  - Materials:** Polypropylene, spun-bound, waterproof desiccant finish one side
  - Custom Options:** custom widths available, call to discuss
  - Requirements:** Membrane installation required under Vented Drip Edge
- WickRight Capstone Vented Support** for walls 9" wide or more – used to span the distance between Vented Drip Edge lengths installed on interior and exterior sides of wall to support vinyl self-adhered flashing which is installed on top of the Drip Edge lengths. Unsupported self-adhered flashing may sag. Water seepage thru capstones may collect / freeze in the winter, damaging the self-adhered flashing and capstone.
  - Length:** Sold 4-foot lengths
  - Widths/Pricing:** 1"-3" wide \$4 L/F, 3"-5" wide \$5 L/F, 5"-7" \$6 L/F
  - Materials:** Polypropylene
  - Custom Options:** custom widths of ½" increments available, call to discuss
  - Requirements:** Vented Support installation required between Vented Drip Edge lengths to support vinyl self-adhered flashing

#### How to Order:

Measure length of parapet wall to be vented, plus 10%

Example – wall is 125' x 110% = 137.5' – Order 140'

Kit #1B comes with 2 lengths of Vented Drip Edge, Vented Support and one roll of membrane per every 200' of Kit ordered.

#### Installation:

1. Install Membrane, desiccant side up on top of parapet
2. Install Vented Drip Edge on both sides of a parapet wall open side down on top of Membrane
3. Install Vented Support in between Vented Drip edge lengths.
4. Install vinyl self-adhered flashing on top of Vented Drip Edge

#### Warranty Information:

20-year limited, transferable manufacturer warranty available when installed by WickRight authorized installer.

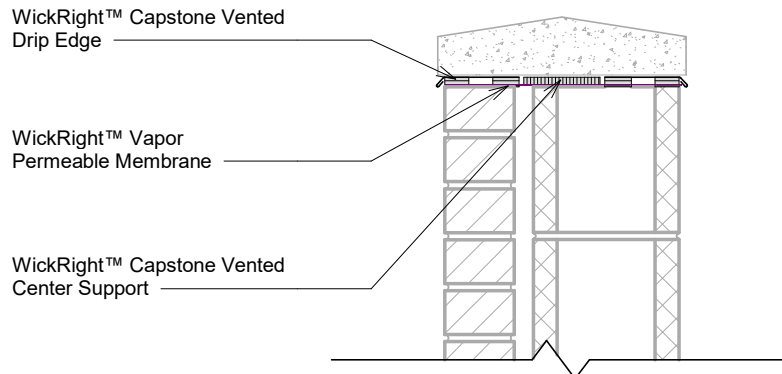
#### Test Results:

**Vented Drip Edge:** Crush Resistance 323 lbs per ½"x 4" x 8" sample

#### Membrane:

- ASTM E96 – Water Vapor Transmission: 107.8 perm
- AATCC TM-127 – Hydrostatic Resistance: 19.9 psi

**Resources:** Installation Guide available at [www.WickRight.com](http://www.WickRight.com)



### WickRight Kit #2A -Capstone Vented Drip Edge and Vented Receiver Flashing for 8" Parapets with Capstones

WickRight Passive Ventilation Systems help keep masonry parapet walls dry. Patented Capstone Vented Drip Edge with Vented Receiver Flashing are a permanent ventilation system for use under capstones on most masonry walls. Installation protects the top of parapets from rain seeping through capstones. Wind flows through Vented Drip Edge and Vented Receiver Flashing to dry walls via circulation and draws moisture vapor up and out of masonry and wall core. WickRight Parapet Vents are field proven with over 150 installations since 2012 in Chicago, Milwaukee, Tampa and Northern California with no call backs.

KITS save time by bundling all the WickRight materials needed.

#### Kit #2A includes:

- WickRight Capstone Vented Drip Edge** for the exterior side of parapet wall
  - Length:** Sold in 10-foot length
  - Kit Price:** \$15.30 L/F - Call for quote raw material prices fluctuate
  - Materials:** 26 gauge Stainless steel, polypropylene vent panel
  - Custom Options:** Kynar painted galvanized steel and copper available, call for quote
- WickRight Capstone Vented Receiver and Standard Counter Flashing** for interior side of parapet wall.
  - Length:** Sold in 10-foot length
  - Kit Price:** \$27.40 L/F receiver flashing + \$4.75 L/F counter flashing- material prices fluctuate, call for quote
  - Materials:** 26-gauge Stainless steel, polypropylene molded plastic on top and corrugated on leg
  - Custom Options:** Kynar painted galvanized steel and copper available, call for quote
- WickRight Vapor Permeable Membrane** – protects parapet from wind driven rain, allows moisture vapor to exit, does not allow water to enter
  - Length:** Sold in 200' Rolls
  - Widths:** 9" rolls – single wythe
  - Materials:** Polypropylene, spun-bound, waterproof desiccant finish one side
  - Kit Price per roll:** 9"–\$100
  - Custom Options:** custom widths available, call to discuss
  - Requirements:** Must be installation under Vented Drip Edge and Receiver Flashing

**How to Order:** Perimeter measurement plus 10%.

Example – wall is 125' x 110% = 137.5' Order 140'

Kit 2A comes with Vented Drip Edge, Vented Receiver Flashing, Standard Counter flashing and one roll of membrane per every 200' of kit ordered.

#### Installation:

1. Install Membrane, desiccant side up on top of parapet
2. Install Capstone Vented Drip Edge (exterior side of parapet) and Vented Receiver Flashing (interior side of parapet) on parapet wall open side down on top of Membrane
3. Install vinyl self-adhered flashing on top of Vented Drip Edge and Receiver Flashing
4. Install Counter Flashing into Receiver

#### Warranty Information:

20-year limited, transferable manufacturer warranty available when installed by WickRight authorized installer.

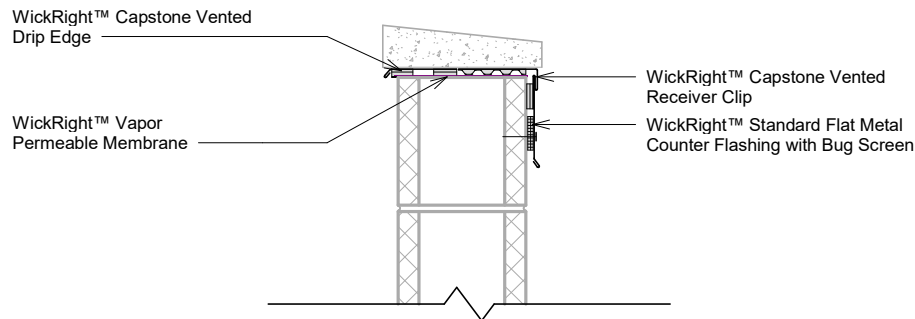
#### Test Results:

**Vented Drip Edge:** Crush Resistance 323 lbs per ½"x 4" x 8" sample

#### Membrane:

- ASTEM E96 – Water Vapor Transmission: 107.8 perm
- AATCC TM-127 – Hydrostatic Resistance: 19.9 psi

**Resources:** Installation Guide available at [www.WickRight.com](http://www.WickRight.com)



**WickRight Kit #2B – Capstone Vented Drip Edge and Capstone Vented Receiver Flashing Kit for Parapets wider than 9" with Capstones**

WickRight Passive Ventilation Systems help keep masonry parapet walls dry. Patented Capstone Vented Drip Edge and Vented Receiver Flashing are a permanent ventilation system for use under capstones on most masonry walls. Installation protects the top of parapets from rain seeping through capstones. Wind flows through Capstone Vented Drip Edge and Vented Receiver to dry walls via circulation and draws moisture vapor up and out of masonry and wall core. WickRight Parapet Vents are field proven with over 150 installations since 2012 in Chicago, Milwaukee, Tampa and Northern California with no call backs.

KITS save time by bundling all the WickRight materials needed.

**Kit #2B includes:**

1. **WickRight Capstone Vented Drip Edge** for exterior side of the wall
  - **Length:** Sold in 10-foot lengths
  - **Kit Price:** \$15.30 L/F - Call for quote, material prices fluctuate
  - **Materials:** 26-gauge Stainless steel, polypropylene vent panel
  - **Custom Options:** Kynar painted galvanized steel or copper, call for quote
2. **WickRight Capstone Vented Receiver Clip and Standard Counter Flashing** for interior side of parapet wall.
  - **Length:** Sold in 10-foot lengths
  - **Kit Price:** \$27.40 L/F receiver flashing + \$4.75 L/F counter flashing - Call for quote material prices fluctuate
  - **Materials:** Stainless steel polypropylene molded plastic on top and corrugated plastic on leg
  - **Custom Options:** Kynar painted galvanized steel or copper call for quote
3. **WickRight Vapor Permeable Membrane** – protects parapet from wind driven rain, allows moisture vapor to exit, does not allow water to enter
  - **Length:** Sold in 200' Rolls
  - **Widths:** 15" rolls – multiple-wythe or 20" rolls
  - **Kit Pricing per roll:** 15" – \$150, 20" – \$200
  - **Materials:** Polypropylene, spun-bound, waterproof desiccant finish one side
  - **Custom Options:** custom widths available, call to discuss
  - **Requirements:** Membrane installation required under Vented Drip Edge and Receiver Flashing
4. **WickRight Capstone Vented Support** for walls 9" or wider – used to span distance between Vented Drip Edge and Receiver Flashing installed on edges of wall to support vinyl self-adhered flashing which is installed on top of both vents. Unsupported self-adhered flashing may sag. Water seepage thru the capstone may collect / freeze in the winter, damaging the self-adhered flashing and capstone.
  - **Length:** Sold 4-foot lengths
  - **Widths/Pricing:** 1"-3" wide \$4 L/F, 3"-5" wide \$5 L/F, 5"-7" \$6 L/F
  - **Materials:** Polypropylene
  - **Custom Options:** custom widths of ½" increments available, call to discuss
  - **Requirements:** Vented Support installation required between Vented Drip Edge and Vented Receiver Flashing to support vinyl self-adhered flashing

**How to Order:**

Measure length of parapet wall to be vented, plus 10%

Example – wall is 125' x 110% = 137.5' – Order 140'

Kit 2B comes with Vented Drip Edge, Vented Receiver and Standard Counter Flashing, Vented Support and one roll of membrane per every 200' of Kit ordered.

**Installation:**

1. Install Membrane, desiccant side up on top of parapet
2. Install Vented Drip Edge on exterior side of parapet open side down on top of Membrane and Vented Receiver Flashing on interior side of the parapet open side down
3. Install Vented Support in between Vented Drip Edge and Vented Receiver Flashing
4. Install vinyl self-adhered flashing on top of Vented Drip Edge and Vented Receiver Flashing

**Warranty Information:**

20-year limited, transferable manufacturer warranty available when installed by WickRight authorized installer.

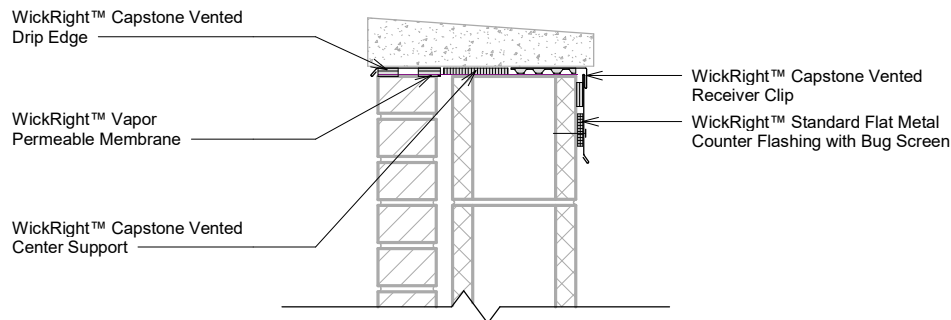
**Test Results:**

**Capstone Vent:** Crush Resistance 323 lbs per ½"x 4" x 8" sample

**Membrane:**

- ASTEM E96 – Water Vapor Transmission: 107.8 perm
- AATCC TM-127 – Hydrostatic Resistance: 19.9 psi

**Resources:** Installation Guide available at [www.WickRight.com](http://www.WickRight.com)



#### WickRight Kit #3A -Capstone Vented Drip Edge, Vented Receiver Flashing for 8" Parapets with Capstones and Low-Slope Roof Vent System

**Function:** Patented WickRight Passive Ventilation Systems help keep masonry parapet walls dry. Patented Capstone Vented Drip Edge with Vented Receiver Flashing are a permanent ventilation system for use under capstones on most masonry walls. Installation protects top of parapets from rain seeping through capstones. Wind flows through Vented Drip Edge and Vented Receiver Flashing to dry walls via circulation and draws moisture vapor up and out of masonry and wall core.

WickRight Low-Slope Roof Perimeter Vent exhausts condensation from under roof membranes and promotes drying of truss ends embedded in masonry walls. Low-Slope Roof Vent is designed primarily for restoration purposes.

WickRight Passive Ventilation Systems are field proven with over 150 installations since 2012 in Chicago, Milwaukee, Tampa and Northern California with no call backs.

KITS save time by bundling all the WickRight materials needed.

Kit #3A includes:

1. **WickRight Capstone Vented Drip Edge** for the exterior side of parapet wall
  - **Length:** Sold in 10-foot length
  - **Kit Price:** \$15.30 L/F - Call for quote raw material prices fluctuate
  - **Materials:** 26-gauge Stainless steel, polypropylene vent panel
  - **Custom Options:** Kynar painted galvanized steel or copper, call for quote
2. **WickRight Capstone Vented Receiver Flashing and Standard Counter Flashing** for interior side of parapet wall.
  - **Length:** Sold in 10-foot length
  - **Kit Price:** \$27.40 L/F receiver flashing + \$4.75 L/F counter flashing- Prices fluctuate, call for quote raw material
  - **Materials:** 26-gauge Stainless Steel, polypropylene molded plastic on top and corrugated plastic on leg
  - **Custom Options:** Kynar painted galvanized steel or copper, call for quote
3. **WickRight Vapor Permeable Membrane** – protects parapet from wind driven rain, allows moisture vapor to exit, does not allow water to enter
  - **Length:** Sold in 200' Rolls
  - **Widths:** 9" rolls – single wythe
  - **Materials:** Polypropylene, spun-bound, waterproof desiccant finish one side
  - **Kit Price per roll:** 9'–\$100
  - **Custom Options:** custom widths available, call to discuss
  - **Requirements:** Must be installation under Vented Drip Edge and Vented Receiver Flashing
4. **WickRight Low-Slope Roof Perimeter Vent** – vents low-slope roofs at roof to wall intersection
  - **Material:** 1/2-inch thick, polyisocyanurate cover board HD Polymer, Polypropylene molded plastic vent
  - **Lengths:** Sold in 4 foot x 4 foot panels
  - **Pricing:** \$130 per panel, plastic and polyiso prices fluctuate, call for quote
  - **Custom Options:** Custom cut panels available for a fee, call to discuss
5. **WickRight Offset Counter Flashing** – protects Low-Slope Roof Perimeter Vent from moisture intrusion
  - **Material:** 26-gauge Stainless Steel
  - **Lengths:** Sold in 10-foot lengths
  - **Pricing:** \$10.75 L/F - Metal prices fluctuate. Call for quote.
  - **Custom Options:** Kynar painted galvanized steel or copper, call for quote
6. **WickRight Bug Screen** – protects Low-Slope Roof Perimeter Vent from insect entry/nesting
  - **Material:** Polypropylene
  - **Lengths:** Sold in 4-foot lengths
  - **Widths:** 2" and 4"
  - **Pricing:** \$4/LF, \$5/LF – plastic prices fluctuate, call for quote
  - **Custom Options:** Custom widths available, call to discuss

**How to Order:** Measure roof perimeter, add 10%.

Example – wall is 125' x 110% = 137.5' Order 140'

Kit 3A comes with Vented Drip Edge, Vented Receiver and Offset Counter Flashing, Low-Slope Perimeter Roof Vent, Bug Screen and one roll of membrane per every 200' of kit ordered.

**Installation Training:** Call 312-720-1467 to schedule.

**Installation:**

1. Install Membrane, desiccant side up on top of parapet
2. Install Vented Drip Edge (exterior side of parapet) and Vented Receiver Flashing (interior side of parapet) on wall molded plastic side down on top of Membrane
3. Install vinyl self-adhered flashing on top of Vented Drip Edge and Vented Receiver Flashing
4. Install Low-Slope Roof Perimeter Vent panel vertically into 1-1/2" slot cut into roof deck at parapet wall  
**Requirement:** Maintain 3/8" gap between receiver flashing and top of the Low-Slope Roof Vent so that airflow out of the Roof Vent is not compromised.
5. Install molded plastic backing of roof vent against the parapet, polyiso facing out to receive roofing materials, using roofing screws and washers in best practices pattern to secure to wall
6. Height, Length and Width can also be modified in the field
7. Install Roofing Materials up to top edge of vent but DO NOT cover. Use Primer to ensure proper adhesion of roofing materials to polyiso coverboard. No roof termination bar is needed for torch applied modified bitumen.
8. Install Offset Counter Flashing into Vented Receiver
9. Place bug screen behind Offset Counter Flashing with the bottom of the bug screen positioned behind the counter flashing's kickout. Tension from profile bend holds bug screen in place without additional fasteners.

**Warranty Information:**

20-year limited, transferable manufacturer warranty available when installed by WickRight authorized installer.

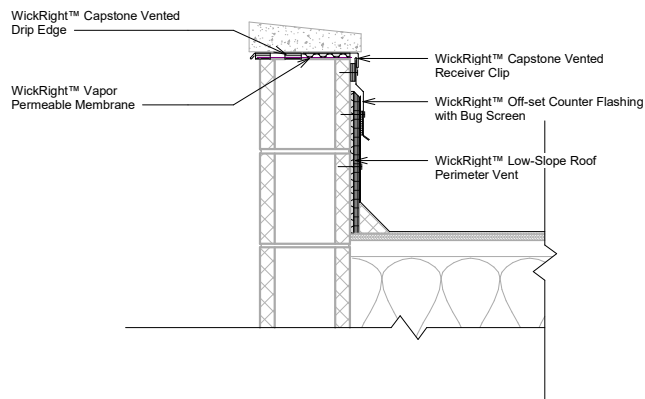
**Test Results:**

**Vented Drip Edge:** Crush Resistance 323 lbs per 1/2"x 4" x 8" sample

**Membrane:**

- ASTM E96 – Water Vapor Transmission: 107.8 perm
- AATCC TM-127 – Hydrostatic Resistance: 19.9 psi

**Resources:** Installation Guide available at [www.WickRight.com](http://www.WickRight.com)



#### WickRight Kit #3B -Capstone Vented Drip Edge, Vented Receiver Flashing for 9" or wider Parapets with Capstones and Low-Slope Roof Vent System

**Function:** Patented WickRight Passive Ventilation Systems help keep masonry parapet walls dry. Patented Capstone Vented Drip Edge with Vented Receiver Flashing are a permanent ventilation system for use under capstones on most masonry walls. Installation protects the top of parapets from rain seeping through capstones. Wind flows through Vented Drip Edge and Vented Receiver to dry walls via circulation and draws moisture vapor up and out of masonry and wall core.

WickRight Low-Slope Roof Perimeter Vent exhausts condensation from under roof membranes and promotes drying of truss ends embedded in masonry walls. Low-Slope Roof Vent is designed primarily for restoration purposes.

WickRight Passive Ventilation is field proven with over 150 installations since 2012 in Chicago, Milwaukee, Tampa and Northern California with no call backs.

KITS save time by bundling all the WickRight materials needed.

**Kit #3B includes:**

1. **WickRight Capstone Vented Drip Edge** for the exterior side of parapet wall
  - **Length:** Sold in 10-foot length
  - **Kit Price:** \$15.30 L/F - Call for quote raw material prices fluctuate
  - **Materials:** 26-gauge Stainless steel, polypropylene vent panel
  - **Custom Options:** Kynar painted galvanized steel or copper, call for quote
2. **WickRight Capstone Vented Receiver Clip and Standard Counter Flashing** for interior side of parapet wall.
  - **Length:** Sold in 10-foot length
  - **Kit Price:** \$27.40 L/F receiver clip + \$4.75 L/F counter flashing - Prices fluctuate, call for quote
  - **Materials:** 26-gauge Stainless Steel, polypropylene or polyethylene molded plastic on top and corrugated plastic on leg
  - **Custom Options:** Kynar painted galvanized steel or copper, call for quote
3. **WickRight Vapor Permeable Membrane** – protects parapet from wind driven rain, allows moisture vapor to exit, does not allow water to enter
  - **Length:** Sold in 200' Rolls
  - **Widths:** 15" rolls – multiple-wythe or 20" rolls
  - **Kit Pricing per roll:** 15" – \$150, 20" – \$200
  - **Materials:** Polypropylene, spun-bound, waterproof desiccant finish one side
  - **Custom Options:** custom widths available, call to discuss
  - **Requirements:** Must be installation under Vented Drip Edge and Vented Receiver Flashing
4. **WickRight Capstone Vented Support** for walls 9" wide or more – used to span the distance between WickRight Vented Drip Edge and Vented Receiver Flashing installed on edges of wall to support vinyl self-adhered flashing which is installed on top of Capstone vents. Unsupported self-adhered flashing may sag. Water seepage thru capstone may collect / freeze, damaging self-adhered flashing and capstone.
  - **Length:** Sold 4-foot lengths
  - **Widths/Pricing:** 1"-3" wide \$4 L/F, 3"-5" wide \$5 L/F, 5"-7" \$6 L/F
  - **Materials:** Polypropylene or polyethylene
  - **Custom Options:** custom widths of ½" increments available, call to discuss
  - **Requirements:** Vented Support installation required between Vented Drip Edge and Vented Receiver Flashing to support vinyl self-adhered flashing
5. **WickRight Low-Slope Roof Perimeter Vent** – vents low-slope roofs at roof to wall intersection
  - **Material:** 1/2-inch thick, polyisocyanurate cover board HD Polymer, Polypropylene or polyethylene molded plastic vent
  - **Lengths:** Sold in 4 foot x 4 foot panels
  - **Pricing:** \$130 per panel, plastic and polyiso prices fluctuate. Call for current pricing
  - **Custom Options:** Custom cut panels available for a fee, call to discuss
6. **WickRight Offset Counter Flashing** – protects Low-Slope Roof Perimeter Vent from moisture intrusion
  - **Material:** 26-gauge Stainless Steel
  - **Lengths:** Sold in 10-foot lengths
  - **Pricing:** \$10.75 L/F - Metal prices fluctuate, call for quote.
  - **Custom Options:** Kynar-painted steel or Copper, call for quote
7. **WickRight Bug Screen** – protects Low-Slope Roof Vent from insect entry/nesting
  - **Material:** Polypropylene
  - **Lengths:** Sold in 4-foot lengths
  - **Widths:** 2" and 4"
  - **Pricing:** \$4/LF, \$5/LF – plastic prices fluctuate, call for quote
  - **Custom Options:** Custom widths available, call to discuss

**How to Order:** Measure roof perimeter, add 10%.

Example – wall is 125' x 110% = 137.5' Order 140'

Kit #3B comes with Vented Drip Edge, Vented Receiver and Offset Counter Flashing, Vented Support, Low-Slope Perimeter Roof Vent, Bug Screen and one roll of membrane per every 200' of kit ordered.

**Installation Training:** Call 312-720-1467 to schedule.

**Installation:**

1. Install Membrane, desiccant side up on top of parapet
2. Install Vented Drip Edge (exterior of parapet), Vented Receiver Flashing (interior of parapet) and Vented Support (centered) open side down on top of Membrane
3. Install vinyl self-adhered flashing on top of Vented Drip Edge, Vented Support and Vented Receiver Flashing
4. Install Low-Slope Roof Perimeter Vent panel vertically into 1-1/2" slot cut into roof deck next to parapet wall

**Requirement:** Maintain 3/8" gap between receiver flashing and top of the Low-Slope Roof Vent so that airflow out of the Roof Vent is not compromised.

5. Install molded plastic backing of roof vent against the parapet, polyiso facing out to receive roofing materials, using roofing screws and washers in best practices pattern to secure to wall
6. Height, Length and Width of Low-Slope Roof Vent can be modified in the field
7. Install Roofing Materials up to top edge, but DO NOT cover. Use primer to ensure proper adhesion to polyiso. No roof termination bar is needed for torch applied modified bitumen.
8. Install Offset Counter Flashing into Vented Receiver Flashing
9. Place bug screen behind Offset Counter Flashing with the bottom of the bug screen positioned behind the counter flashing's kickout. Tension from profile bend holds bug screen in place without additional fasteners.

**Warranty Information:**

20-year limited, transferable manufacturer warranty available when installed by WickRight authorized installer.

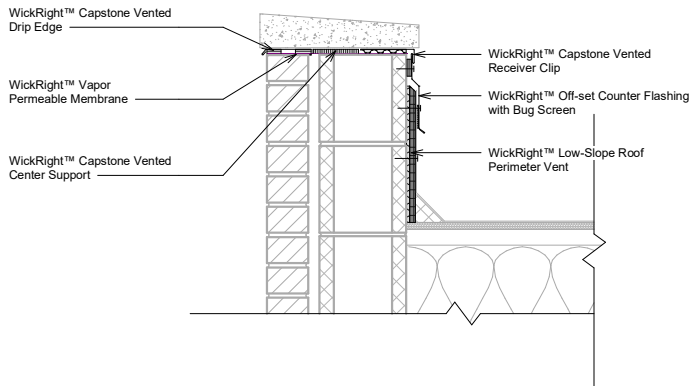
**Test Results:**

**Vented Drip Edge:** Crush Resistance 323 lbs per ½"x 4" x 8" sample

**Membrane:**

- ASTM E96 – Water Vapor Transmission: 107.8 perm
- AATCC TM-127 – Hydrostatic Resistance: 19.9 psi

**Resources:** Installation Guide available at [www.WickRight.com](http://www.WickRight.com)



#### WickRight Kit #4 –Low-Slope Roof Vent System, independent of Parapet Vents

**Function:** Patented, designed for Venting Low-Slope Roof Perimeters at the roof to parapet wall intersection. Low-Slope Roof Perimeter Vent exhausts condensation from under roof membranes and promotes drying of the interstitial roof space and truss ends embedded in masonry walls. Designed primarily for restoration purposes but may be used in new construction. WickRight Passive Ventilation is field proven with over 150 installations since 2012 in Chicago, Milwaukee, Tampa and Northern California with no call backs.

KITS save time by bundling all the WickRight materials needed.

Kit #4 Includes:

1. **WickRight Low-Slope Perimeter Roof Vent** – vents low-slope roofs at the roof to wall intersection
  - **Material:** 1/2-inch thick, polyisocyanurate cover board HD Polymer, Polypropylene or polyethylene
  - **Lengths:** Sold in 4 foot x 4 foot panels
  - **Pricing:** \$130 per panel, Polyiso prices fluctuate, call for pricing
  - **Custom Options:** Custom cut panels available for a fee, call to discuss
2. **WickRight 3-piece Double Caulk Pocket Counter Flashing** – Protects Low-Slope Roof Perimeter Vent from moisture intrusion when Roof Vent is installed without WickRight parapet vents.
  - **Material:** 26-gauge Stainless Steel
  - **Lengths:** Sold in 10-foot lengths
  - **Pricing:** \$18.50/LF – Metal pricing fluctuates, call for quote
  - **Custom Options:** Kynar-painted galvanized steel or Copper, call for quote
3. **WickRight Bug Screen** – Required installation. Protects Low-Slope Roof Vent from insect entry/nesting
  - **Material:** Polypropylene or polyethylene
  - **Lengths:** Sold in 4-foot lengths
  - **Widths:** 2" and 4"
  - **Pricing:** \$4/LF, \$5/LF – plastic prices fluctuate, call for quote
  - **Custom Options:** Custom widths available, call to discuss

**How to Order:** Measure perimeter of roof, add 10%

Order same amount of Low-Slope Perimeter Roof Vent, Double Caulk Pocket and Bug Screen

**Installation Training:** Call 312-720-1467 to schedule.

**Installation Notes:** Maintain 3/8" gap between receiver flashing and top of the Low-Slope Roof Vent.

**Installation:**

1. Install Low-Slope Roof Perimeter Vent panel vertically into 1-1/2" slot cut into roof deck near parapet wall and roof deck
2. Install molded plastic backing of roof vent against the parapet, polyiso facing out to receive roofing materials, using roofing screws and washers in best practices pattern to secure to wall
3. Height, Length and Width can also be modified in the field
4. Install Roofing Materials up to top of Roof Vent, but DO NOT cover. Use primer to ensure proper adhesion of roofing materials to polyiso. No roof termination bar is needed for torch applied modified bitumen.

**Top of Low-Slope Roof Perimeter Vent must protected from the weather and bugs.**

5. Install 3-piece Double Caulk Pocket Counter Flashing above the Low-Slope Roof Perimeter Vent. Following installation instructions provided at [www.wickright.com](http://www.wickright.com) carefully.
6. **Requirement:** Install masonry and metal compatible polyurethane sealant in both caulk pockets provided on top and middle counter flashing pieces to protect the low-slope roof vent from moisture intrusion. Manufacturer recommends Sika XX polyurethane sealant.
7. Install Counter Flashing into receiver flashing on middle piece
8. **Requirement:** Install WickRight Bug Screen in back of Counter Flashing, position as shown in drawing and fasten with 1/2" sheet metal screw or rivet.

**Warranty Information:**

20-year limited, transferable manufacturer warranty available when installed by WickRight authorized installer.

**Test Results:**

**Bug Screen:** Crush Resistance 323 lbs per 1/2"x 4" x 8" sample

**Resources:** Installation guide available at [WickRight.com](http://WickRight.com)

