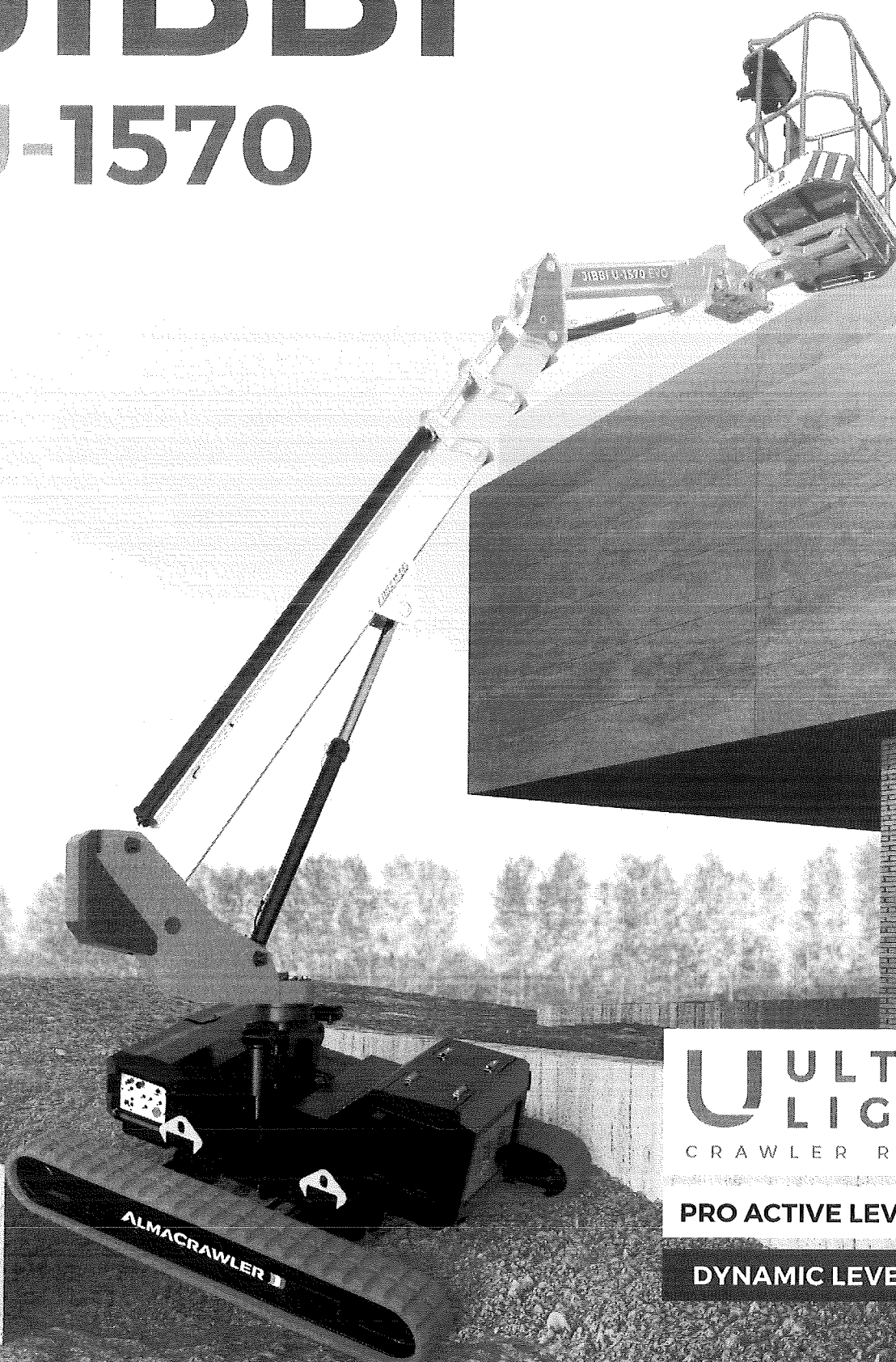


PG 45

# JIBBI U-1570



PATENT PENDING



**U** **ULTRA**  
**L** **LIGHT**  
CRAWLER RANGE

**PRO ACTIVE LEVELLING**

**DYNAMIC LEVELLING**

CRAWLER TELESCOPIC BOOM

**ALMACRAWLER** 



# JIBBI U-1570

Piattaforma cingolata telescopica ultraleggera di 2,9 t per 15,40 m di altezza.

Self-propelled crawler with an Ultralight Telescopic boom of 2,9 tonnes and 15,4 metres high.

## ALMACRAWLER



| Dati tecnici                                       | EVO           | LTH      | Technical data                |
|--|---------------|----------|-------------------------------|
| Altezza massima di lavoro                          | 15,40 m       |          | Max working height            |
| Altezza piano calpestio                            | 13,40 m       |          | Max height basket floor       |
| Altezza di traslazione massima                     | 9,50 m        |          | Max moving height             |
| Sbraccio massimo (carico 80 Kg)                    | 9,65 m        |          | Max outreach (load 80 kg)     |
| Sbraccio massimo (carico 140 Kg)                   | 8,23 m        |          | Max outreach (load 140 kg)    |
| Sbraccio massimo (carico 200 Kg)                   | 7,33 m        |          | Max outreach (load 200 kg)    |
| Sbraccio massimo (carico 250 Kg)                   | 6,83 m        |          | Max outreach (load 250 kg)    |
| Angolo di rotazione torretta                       | +/- 110°      |          | Rotation angle                |
| Dimensioni navicella                               | 1,4 x 0,7 m   |          | Basket size                   |
| Angolo di rotazione navicella                      | +/- 90°       |          | Basket rotation angle         |
| Portata massima in navicella                       | 250 kg (2 p.) |          | Max basket capacity           |
| Lunghezza richiusa                                 | 4,92 m        |          | Length in stowed position     |
| Larghezza minima richiusa                          | 1,35 m        |          | Min width in stowed position  |
| Larghezza media di lavoro                          | 1,98 m        |          | Med working width             |
| Larghezza massima di lavoro                        | 2,45 m        |          | Max working width             |
| Altezza minima richiusa                            | 1,99 m        |          | Min height in stowed position |
| Livellamento longitudinale                         | +/- 15°       |          | Longitudinal leveling         |
| Livellamento laterale                              | +/- 15°       |          | Lateral leveling              |
| Pendenza massima superabile                        | 25°           |          | Max gradeability              |
| Pendenza laterale massima                          | 25°           |          | Max side gradeability         |
| Velocità traslazione (veloce)                      | 2,5 km/h      | 2,0 km/h | Drive speed (fast)            |
| Velocità di traslazione in condizione di trasporto | 0,4 km/h      |          | Security speed                |

### Pesi

|                 |            |            |                                  |
|-----------------|------------|------------|----------------------------------|
| Carico al suolo | 3,40 kN/m2 | 3,50 kN/m2 | Traffic load (max working width) |
| Peso totale     | ~ 2895 kg  | ~ 2950 kg  | Total weight                     |

### Weights

### Potenza

|  |                          |         |  |
|--|--------------------------|---------|--|
| Motore Yanmar 3TNM68-AS diesel                   | 14 kW - 19,2 Hp @3600rpm | No      | 3TNM68 -AS Yanmar engine (diesel)                |
| Lithium battery pack 300Ah-48V                   | No                       | DC 4 kW | Lithium battery pack 300Ah-48V                   |
| N° 2 battery charger 20Ah-48V (Re-charging time) | No                       | 6 h     | N° 2 battery charger 20Ah-48V (Re-charging time) |

### Power

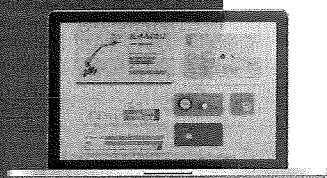
### Allestimenti a richiesta

|  |   |  |
|--|---|--|
| Cingoli antitraccia                        | - | Non-marking tracks                             |
| Elettropompa 220V-2,2Kw / 50Hz             | - | Electric pump 220V-2,2KW / 50Hz                |
| Kit radiocomando con batteria ricaricabile | - | Radio remote control with rechargeable battery |
| Kit lubrificante per clima artico          | - | Arctic lubricant for cold climate              |
| Sistema Anti-collisione ad ultrasuoni      | - | Ultrasonic Anti-collision System               |

### Extras - On Demand

## MyAlmac CONTROL PANEL

Pannello remoto impostazioni macchina  
Machine settings remote control panel



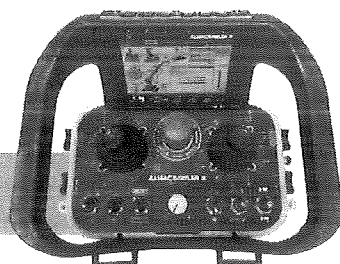
Sistema anti-collisione  
ad ultrasuoni  
Ultrasonic anti-collision  
system

Portata massima  
in navicella 250 kg  
Max basket  
capacity 250 kg

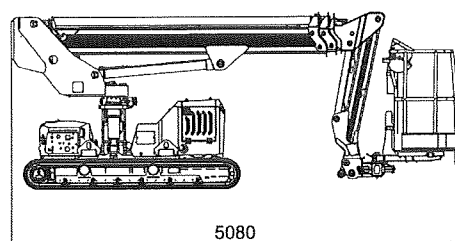
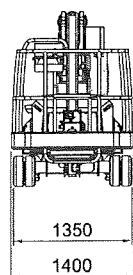
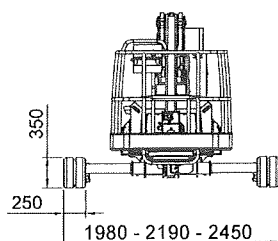
## Integrated Drive System

Guida a singolo joystick  
Using single joystick

Console via cavo by AUTEC  
Cable remote console by AUTEC



Braccio telescopico  
ultraleggero con  
JIB in alluminio  
Ultralight aluminium  
telescopic boom



Livellamento combinato  
massimo 22°  
Mix leveling  
up to 22°

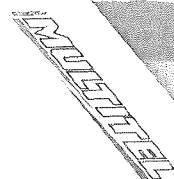
**ULTRA  
LIGHT**  
CRAWLER RANGE

Nata dalla sinergia fra **AlmaCrawler** e **Multitel Pagliero** la **Serie Ultralight**, esprime la perfetta fusione fra innovazione e tradizione, proponendo in un unico prodotto un mix di prestazioni uniche nel loro genere.

Multitel Pagliero forte di una comprovata esperienza nella lavorazione dell'alluminio ha realizzato un **Braccio Ultraleggero** prodotto con una speciale lega che ne rende la struttura robusta e dal peso estremamente contenuto; tecnologia questa che, unita all'innovazione e al know-how del **Sottocarro Livellante** di AlmaCrawler, ha consentito la realizzazione di un semovente cingolato con un'altezza di lavoro superiore ai 15 metri ed una massa complessiva inferiore ai 2.9 t, mantenendo invariata la possibilità di lavorare in quota in presenza di terreni sconnessi e/o su forti pendenze (fino a 22°).

Resulting from the partnership between **AlmaCrawler** and **Multitel Pagliero**, the **Ultralight Series** represent the perfect combination of innovation and tradition, offering a mix of unique characteristics all in a single product.

The **Ultralight Boom** produced by Multitel Pagliero with a special aluminum alloy allows for a sturdy yet light structure. This technology combined with the innovative **AlmaCrawler Bi-Levelling Undercarriage**, has produced a self-propelled tracked vehicle with a working height of over 15 meters and a total weight of less than 2.9 t, able to travel at height on uneven ground and/or steep slopes (up to 22°) thanks to the **Dynamic and Pro-Active Leveling** technology.





# JIBBI U-1570

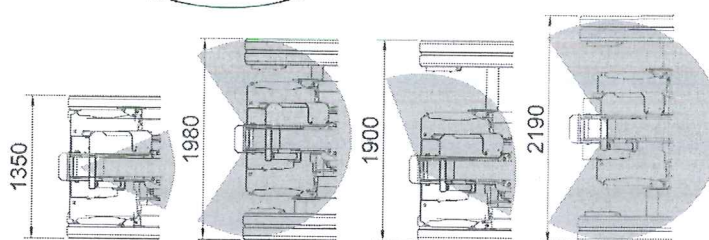
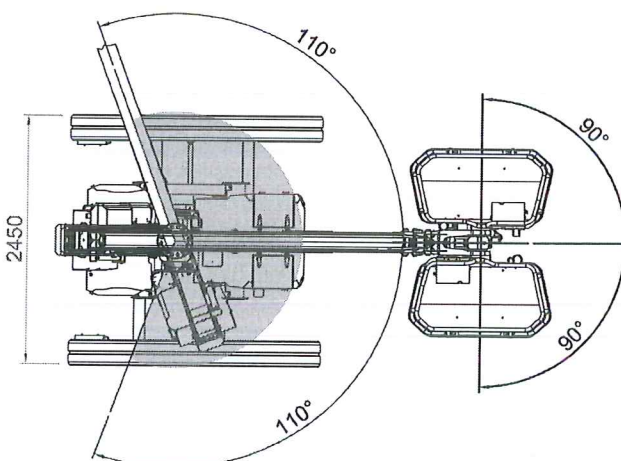
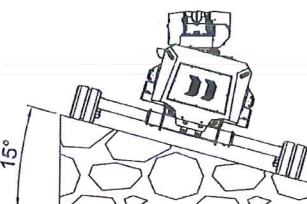
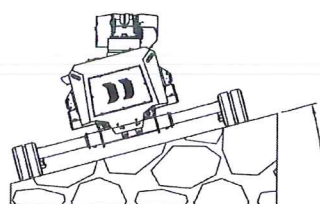
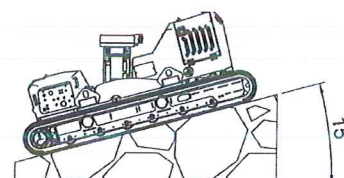
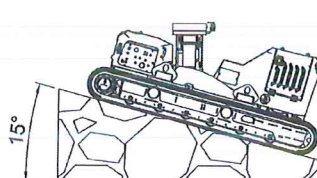
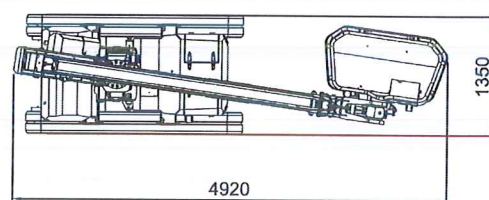
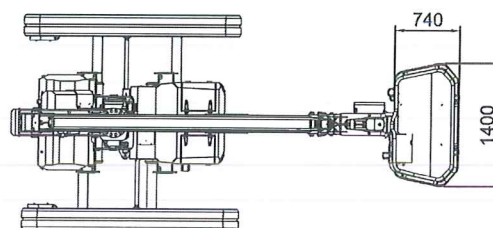
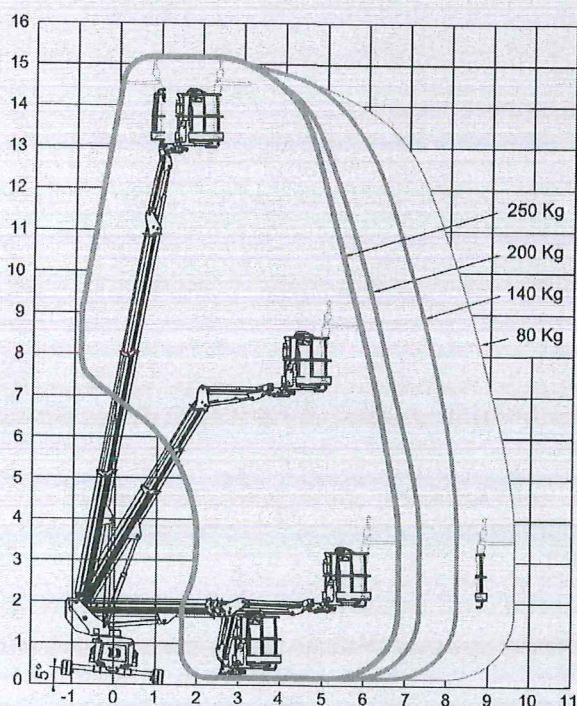
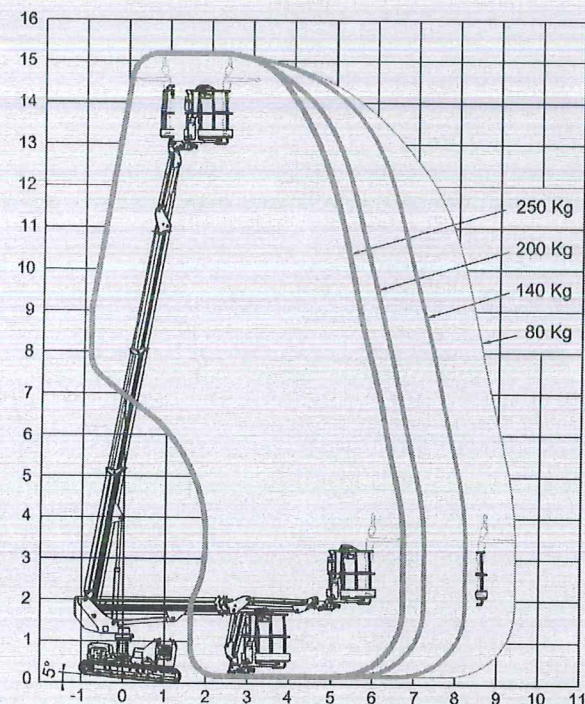
|          |          |        |                |          |                |
|----------|----------|--------|----------------|----------|----------------|
| 15.4m    | 250kg    | 19.2Hp | $\pm 15^\circ$ | 2.5 km/h | $\pm 15^\circ$ |
| MAX W.H. | CAPACITY | POWER  | LONG. LEVEL.   | SPEED    | LATER. LEVEL.  |

## Dynamic Working Performance

Controllo progressivo dello sbraccio in funzione delle reali condizioni di lavoro (portata in cesta, carreggiata, inclinazione terreno).

Progressive outreach control in function of effective working conditions (basket capacity, track width, ground inclination).

- 80 kg
- 140 kg
- 200 kg
- 250 kg



Via Caduti sul Lavoro 1  
46019 Viadana (MN) - ITALY  
+39 0375 83 35 27  
info@almac-italia.com

ALMACRAWLER

ALL DATA REPORTED IN THIS CATALOGUE ARE NOT BINDING. ALMAC SRL RESERVES THE RIGHT TO CHANGE SPECIFICATIONS WITHOUT PRIOR NOTICE.