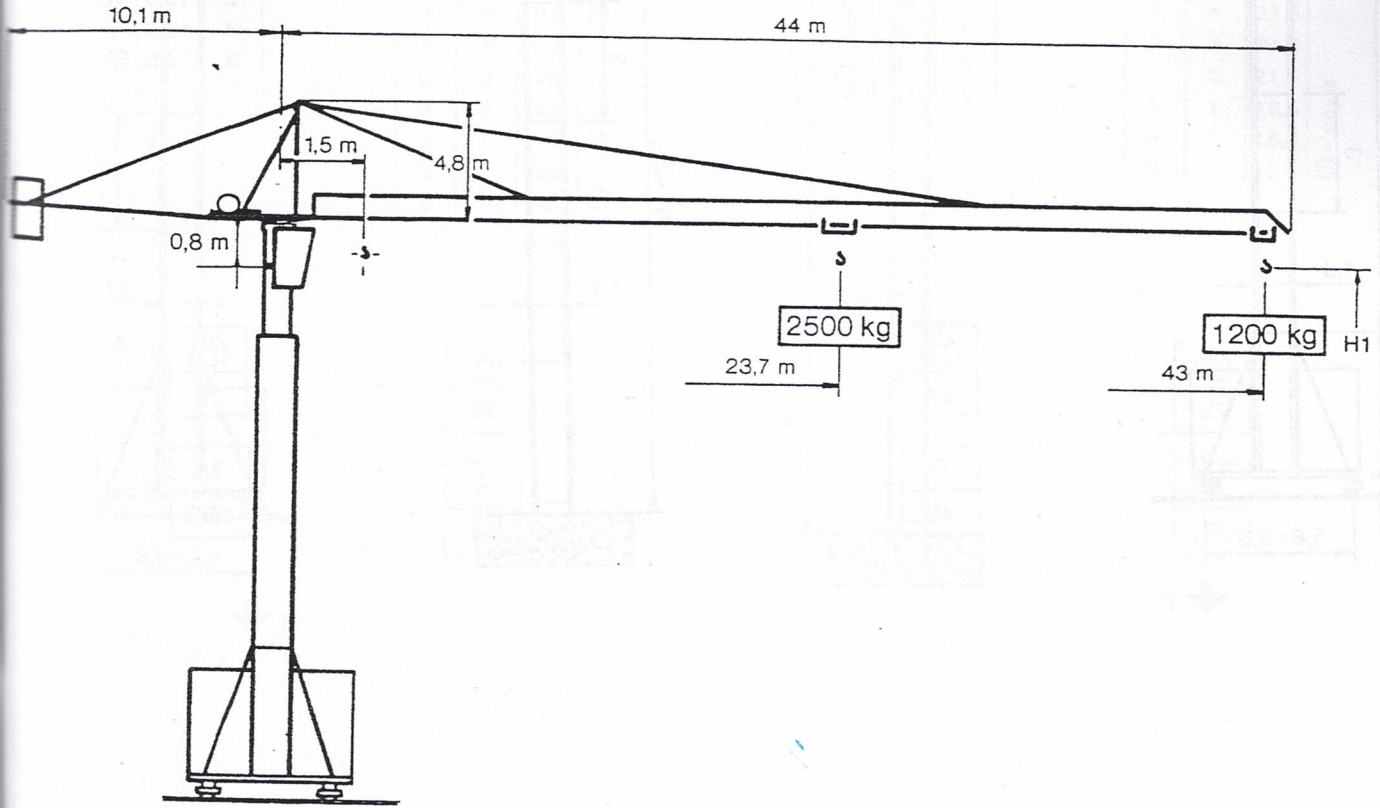


Simma

GT 112 B 1,25

DIN 15018 H1/B3



BRACCIO - FLECHE - JIB - AUSLEGER - FLECHA
43 m

2,5	2,35	2,14	2	1,81	1,68	1,56	1,45	1,36	1,27	1,2	t
25,7	25	27	29	31	33	35	37	39	41	43	m

BRACCIO - FLECHE - JIB - AUSLEGER - FLECHA
41 m

2,5	2,25	2,07	1,91	1,77	1,65	1,53	1,44	1,35	t
27,3	27	29	31	33	35	37	39	41	m

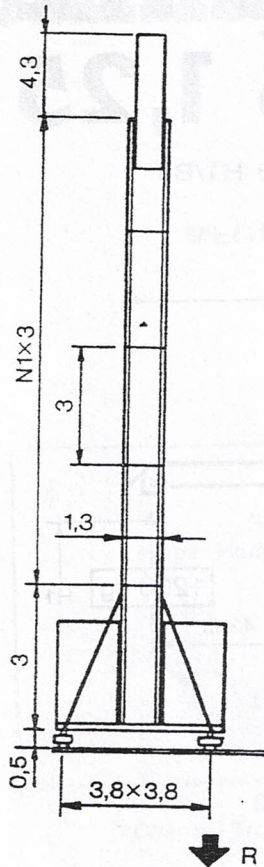
BRACCIO - FLECHE - JIB - AUSLEGER - FLECHA
36 m

2,5	2,4	2,21	2,04	1,80	1,76	1,7	t
27,3	27	29	31	33	35	36	m

BRACCIO - FLECHE - JIB - AUSLEGER - FLECHA
31 m

2,5	2,27	2,1	t
27,3	29	31	m

R3

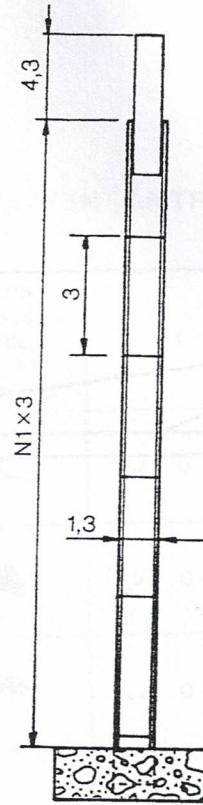


N1	H1
9	34
8	31
7	28
6	25
5	22
4	19
3	16
2	13

□ = 120x15

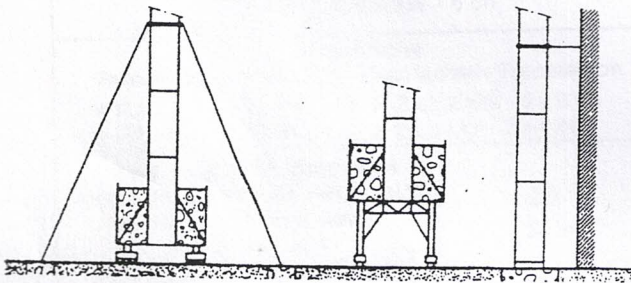


S



N1	H1
9	30,5
8	27,5
7	24,5
6	21,5
5	18,5
4	15,5
3	12,5

□ = 120x15



TRASLAZIONE IN CURVA VOIE COURBE CURVE TRACK KURVENFAHRWERK

Raggio interno consigliato
Rayon interieur preconise
Recommended internal radius
Geratener innerer radius

Rotaia
Rail
Rail
Schienen
Rail

15 m*

46 kg/m

Altre versioni, consultateci

*Autres versions, implantations spéciales
Nous consulter*

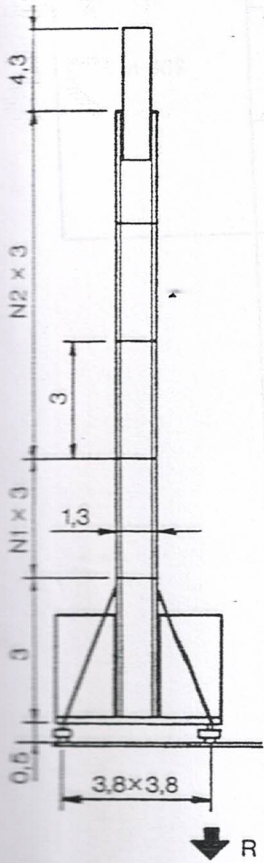
Other versions, special installations
Please consult us

*Andere Ausführung, spezieller Aufstellung
Bei uns rückfragen*

Otras versiones, implantaciones especiales
Consultarnos

* Per raggi inferiori consultateci
* Pour rayons inferieurs nous consulter
* For inferior radius consult us
* Fuer niedrigere radien bei uns rueck fragen

R3R

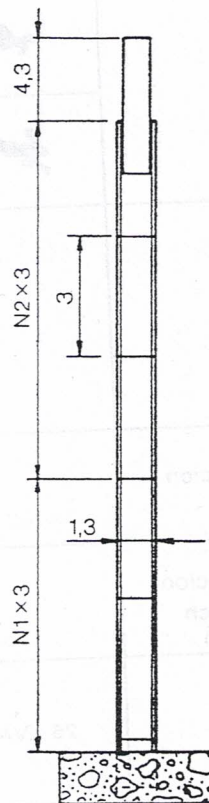


1	2	H1
N1	N2	
3	8	40
3	7	37
3	6	34
3	5	31
3	4	28
3	3	25
3	2	22
3	1	19
3	-	16
2	-	13

1 = 150 x 16 2 = 120 x 15



SR



1	2	H1
N1	N2	
3	8	36,5
3	7	33,5
3	6	30,5
3	5	27,5
3	4	24,5
3	3	21,5
3	2	18,5
3	1	15,5
3	-	12,5




1 = 150 x 16 2 = 120 x 15



R Reazione max in t
 Reactions maxi en t
 Maxi reactions ground in t
 Maximale Eckdrücke in t
 Reacciones maxi en t

 A vuoto senza zavorra e con braccio max
 A vide sans lest et avec flèche maxi
 Maxi jib without load and c.w.
 Maximal Ausleger ohne Last und Ballast
 Flecha maxima sin carga y lastre

M Momento max all'asse in tm
 Moment maxi à l'axe en mt
 Maxi moment at the axis in mt
 Kip maximale moment in mt
 Momento maxi en el eje en mt

	Velocità Vitesses Speeds Gänge Velocidades	t	m/min	Capacità Capacité Capacity Rauminhalt Capacidad
Sollevamento Levage - Hoisting - Heben - Elevacion T115 - 12,5 11 kW - 15 ch		0 - 2,5	5	260 m
		0 - 2,5	21	
		0 - 1,25	42	
Distribuzione Chariot - Trolley - Katzfahren - Carro Standard DT 125 ▶ 1,84 kW - 2,5 ch Optional DC 2V 30 ▶ 0,7/2,2 kW - 1/3 ch			35 14 - 42	
Rotazione Orientation - Slewing - Schwenken - Orientacion RCE 160 ▶ 4,5 kW - 6 ch			0 → 1 g/min t/min Rpm - Upm	
Traslazione Translation - Travelling - Kranfahren - Translacion ▶ R3 TB 260 - C ▶ 2x2,2 kW - 2x3 ch ▶ R3-R TB 350 - C ▶ 2x3 kW - 2x4 ch			25	
Potenza elettrica necessaria puissance électrique nécessaire Necessary electric power Anschlusswert Potencia electrica necesaria	380 V 50 Hz	25 KVA		