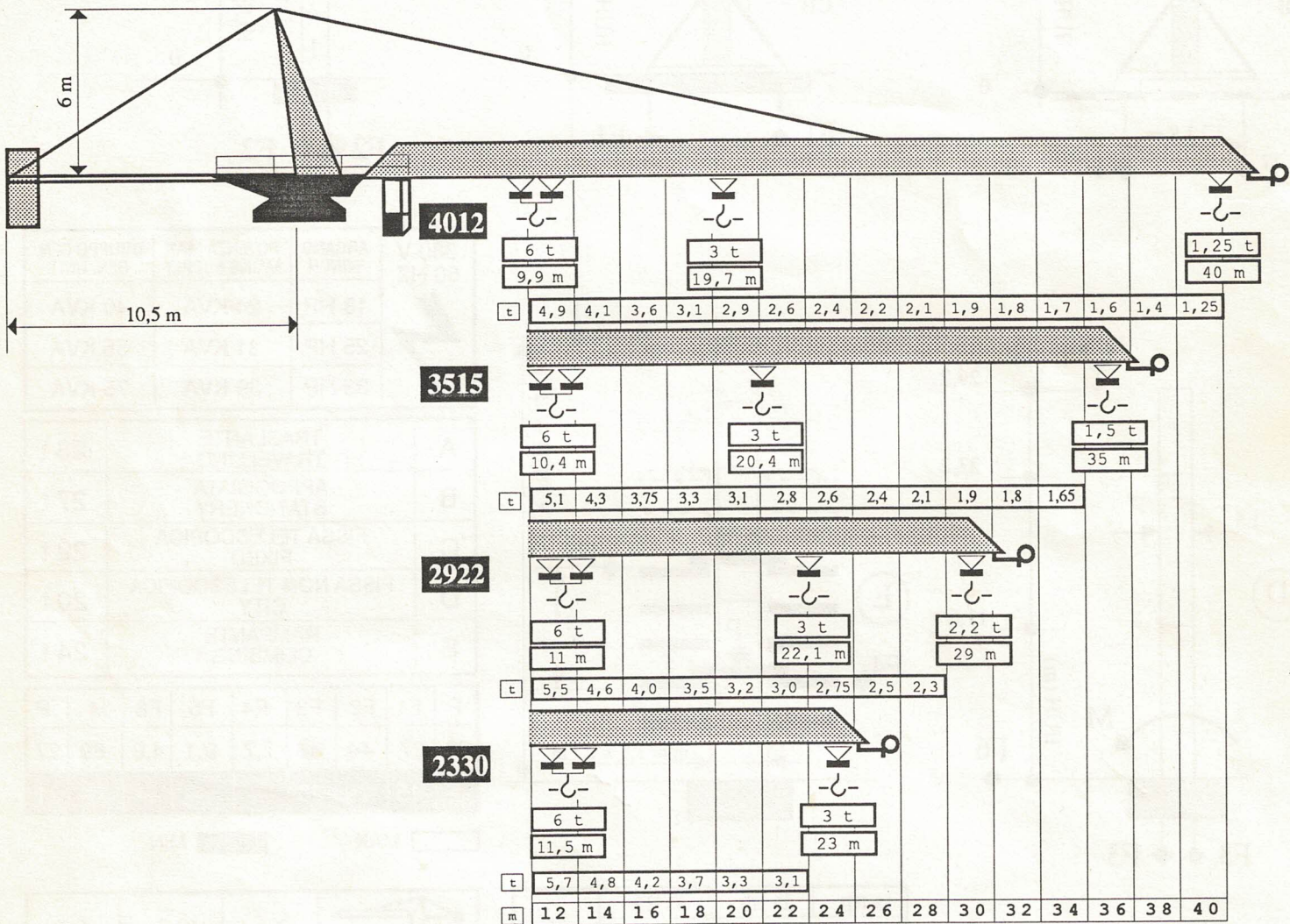




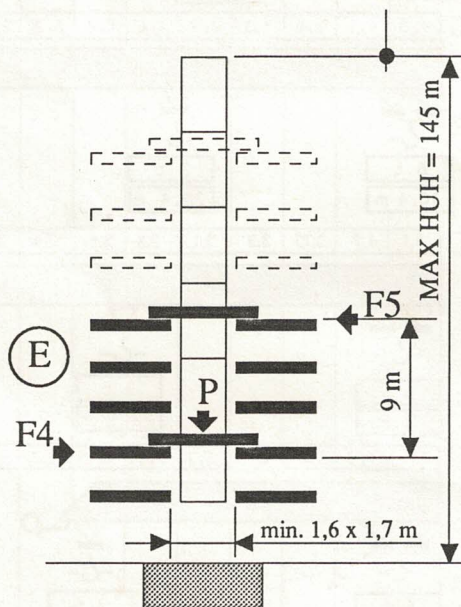
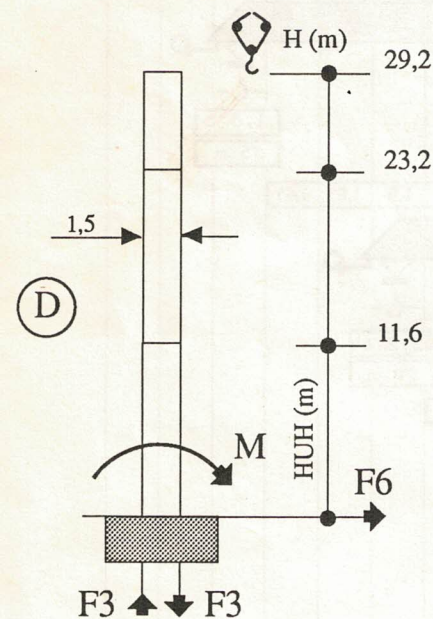
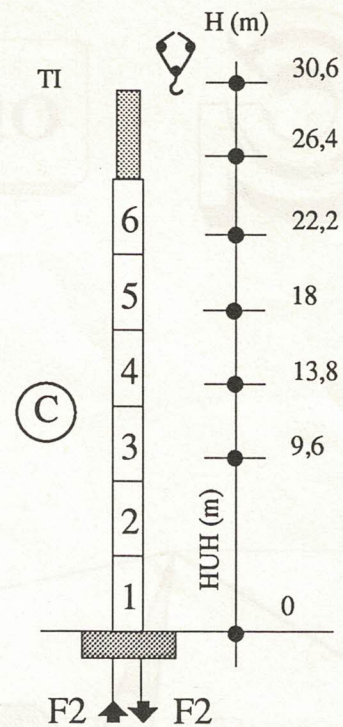
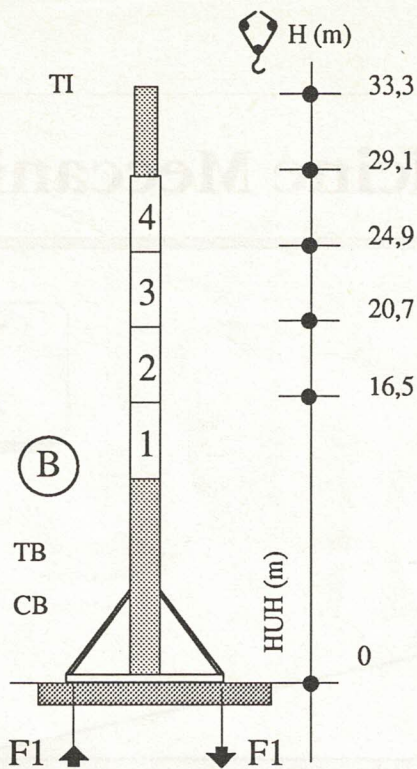
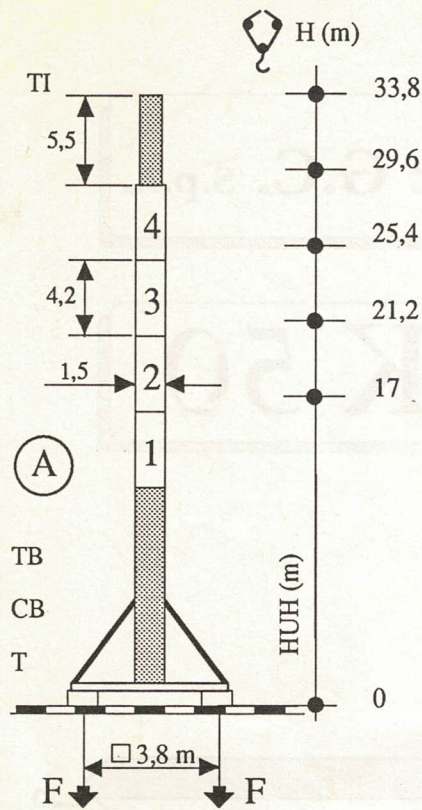
Officine Meccaniche G.C. S.p.A.

MK 50



Disegno e costruzione secondo normativa CNR-UNI 10011/10021 - Spinotti in acciaio inossidabile sistema Peiner - Struttura metallica - Profilati a sezione chiusa in Fe 360 e Fe 510 - Saldature eseguite da personale qualificato - Parti elettriche marca Telemecanique Ralla Metallurgica Rossi.

Planning and construction under CNR-UNI 10011/10021 normative - Peiner system antioxidable steel joints - Carpentry quadrangular outlining profiles Fe 360 and Fe 510 - Weldings by qualified personnel - electric components Telemecanique - Ball bearing Metallurgica Rossi.



380 V 50 HZ	ARGANO WINCH	POTENZA MAX MAINS SUPPLY	GRUPPO GEN. GEN. UNIT
	18 HP	24 KVA	40 KVA
	25 HP	31 KVA	55 KVA
	33 HP	39 KVA	75 KVA

	DESCRIPTION	WEIGHT
A	TRASLANTE TRAVELLING	28 t
B	APPOGGIATA STATIONERY	27 t
C	FISSA TELESCOPICA FIXED	22 t
D	FISSA NON TELESCOPICA CITY	20 t
E	RAMPANTE CLIMBING	24 t

F	F1	F2	F3	F4	F5	F6	M	P
38	27	44	43	7,7	9,1	4,0	69	27
—	15	29	28	—	—	—	—	21

MAX MIN

18 HP	25 HP	33 HP	kg
m/min			

HOISTING 			44,0	69,0	78	1500
			22,0	35,0	39	3000
			3,6	5,8	6	3000
			22,0	34,5	39	3000
			11,0	17,5	20	6000
			1,8	2,9	3	6000

	R CO	0,8 rpm	6,5 kgm
	M 48	25 - 50 m/min	2/1,5 HP
	M 48	25 m/min	2 x 1,5 HP

I DATI NON SONO IMPEGNATIVI E POSSONO ESSERE MODIFICATI IN QUALSIASI MOMENTO SENZA PREAVVISO



Officine Meccaniche G.C. s.p.A.
 SEDE E STABILIMENTO : via S. Gennariello POLLENA TROCCHIA (NA)
 tel. (081) 897.20.52 - 530.22.92 - FAX 530.22.92
 Capitale sociale £. 1.800.000.000 - Codice Fiscale e Partita IVA 05101360633
 C.C.I.A.A. NAPOLI n° 416758 - Tribunale di NAPOLI n° 6264/86