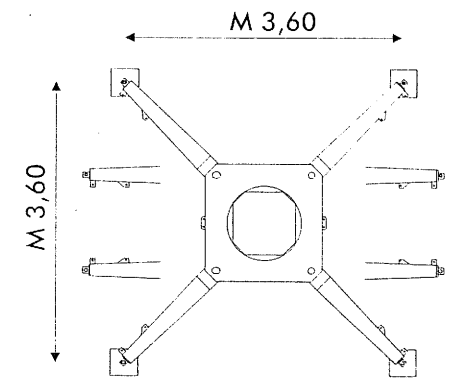
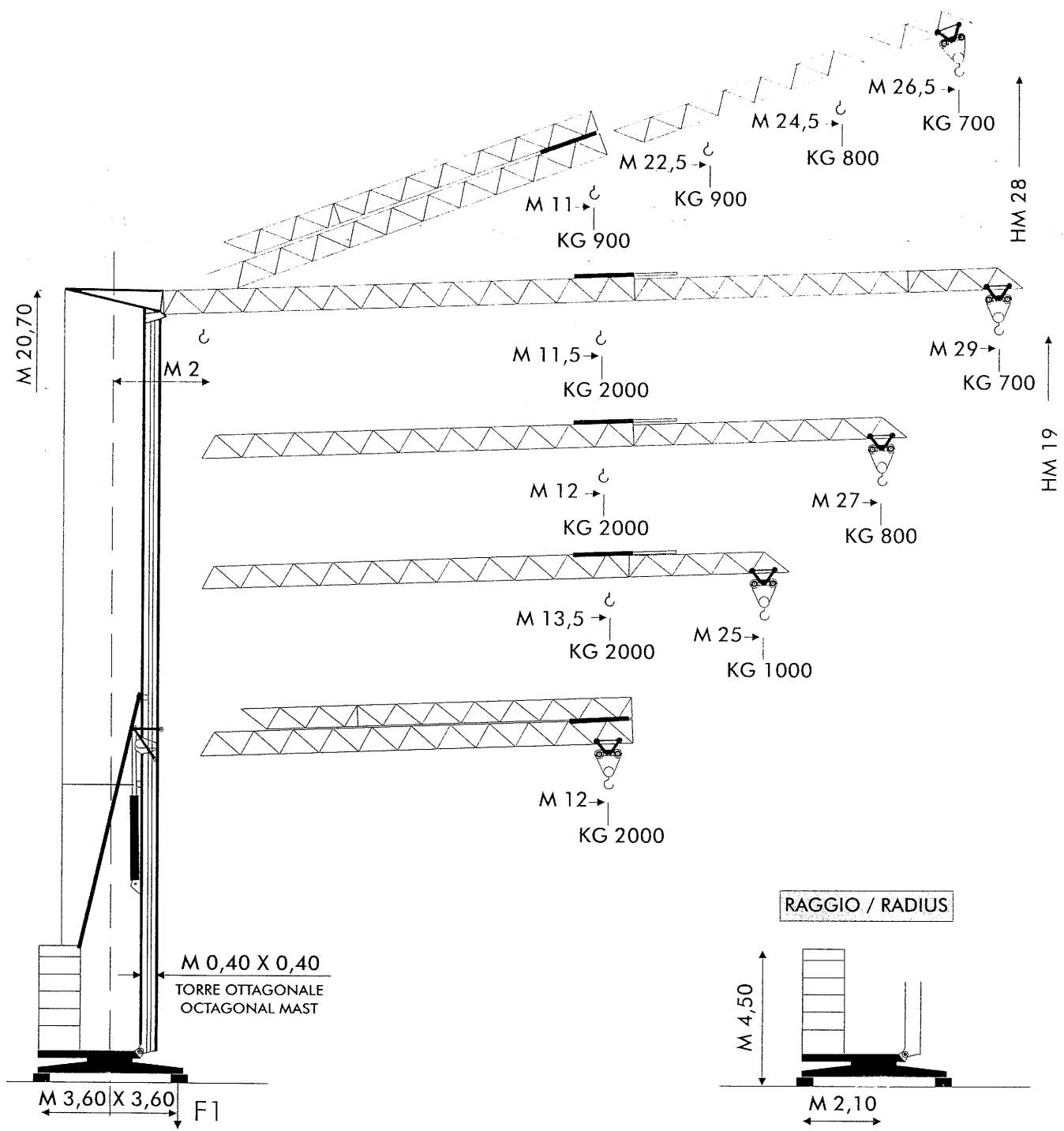


# ALFAMATIC

## MODELLO/TYPE A 29 *Super*

29 - 27 - 25



F1	● KG 14000	■ 11000
----	------------	---------

	~KG 9500/14500
--	----------------

- IN ESERCIZIO / IN SERVICE
- FUORI ESERCIZIO / OUT OF SERVICE
- PESO SENZA E CON ZAVORRA DI MONTAGGIO  
WEIGHT WITHOUT & WITH ASSEMBLY BALLAST