

ABSOLUTE AUCTION

SATURDAY, AUGUST 1ST, AT 10:00 A.M.

LOCATION: 1338 Tiline Rd. (Hwy 70), Tiline, KY 42083
From Smithland take Tiline Rd. (Hwy 70) to sale site. Watch for Signs!!

Selling the Personal Property of Iris Ann Ramage. Mrs. Ramage is downsizing & moving to a new home. Selling Trailers, Boat, Farm Equipment, Tools, Furniture, Antiques, Collectibles, & More!!!

TRAILERS, FISHING BOAT, EQUIPMENT, TOOLS



16' Tandem Utility Trailer; 5'x8' Single Axle Trailer; 1996 MONARK Pro 160LX Fishing Boat, 40 HP, w/MONARK Trailer; Dirty Hand Wood Splitter on Wheels, 6 1/2 HP Kohler; Dearborn 2 Btm. Plow, 3 Pt. Hitch; 6' Disc, 3 Pt. Hitch; Like New 6500 Watt Generator; Campbell Hausfeld Electric Air Compressor; Craftsman 10 Drawer Tool Box; Stack On Master Series Rolling Tool Box, 8 Drawer Top, 5 Drawer Bottom; 5 Drawer Bottom Rolling Tool Box; (2) Homelite EZ Chainsaws; Poulan Gas Pole Saw; 4" Side Grinder; Power Tools - Skilsaw, Drills, etc.; Miter Saw; Craftsman Sawzall; Craftsman Soldering Iron; (2) Makita Drills w/Batteries & Chargers; Hatchets; Hammers - Brick, Ball Peen, Shop, Claw, etc.; Screwdriver Sets; Sm. Snap on Screwdrivers; Aluminum Corn Scoop; Hand & Hacksaws; Chains; Crow Bars; Sev. Vise Grips; C Clamp; Shackles & Clevises; Wedges; Wood Carpenter Boxes; Jumper Cables; Hand Trucks; Boomers; Hand Tools - Square Shovels, Spades, Sharp Shooters, Posthole Digger, Rakes, Picks, Hoes, etc.; Saw Horses; Breast Yokes; Lg. Saw Blade; Squirrel Cage Fan; Cattle Hook; Kelly & Kelly Perfect Double Bit Axes & Others; Pole Axes; Jack Stands; 1 1/2 Ton Floor Jack; Top Link; Plumbing Supplies; Brace & Bits; Bolt Cutters; Ammo Boxes; Copper Tubing; Roll Rite Creeper; Grease Guns; Pole Climbers; Barbwire Stretchers; Swinging Drawbar; Leather Nail Pouch; Sledge Hammers; Sway Bars; Aluminum 2 Step Ladder; Aluminum 6' Step Ladder; 28' & 16' Aluminum Extension Ladders; Roll of Electric Fence Wire; Wood Shelving Boards; SAE & Metric Stubby Wrenches; SAE & Metric Open End Wrenches, & More - Craftsman, Williams, Master Mechanic, etc.; Sev. Sizes Rigid & Craftsman Pipe Wrenches; Pipe Cutters; Crescent Wrenches; Several Sockets & Ratchets - Craftsman, Williams, Blackhawk, Master Mechanic, etc.; Snap On Line Wrench; Craftsman Snips; Channel Lock Channel Locks; Bar Clamps; Files; Craftsman Combination Wrenches; Pliers; Allen Wrenches; Nut Drivers; Craftsman Chisel Set; Brass & Copper Fittings; Set of Craftsman Robo Grip Automatic Adjustable Pliers; Craftsman Ratchet Wrenches; Channel Lock Wrenches; Sears 3/8" Drive Socket Set; Electric Wire & Much More!!!



Terms on Personal Property: EVERYTHING SOLD AS IS! Complete Payment Due Day of Sale with Cash, Check or Credit Card. 3% Merchant Fee will apply to credit card payments. NO BUYER'S PREMIUM!
All announcements made day of sale take precedence over any previous advertisements.

STEVEN J. BUNCH, Auctioneer - JOE BUNCH, Auctioneer, RE Agent

BUNCH BROTHERS

AUCTIONEERS & REALTY INC.

P O BOX 175 - WINGO, KY 42088

Phone: (270) 376-2922 Cell: (270) 748-8080

Website: bunchbrothers.com

Lisa Wilson, RE Broker

Email: Lori@bunchbrothers.com





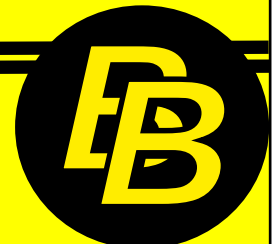
STEVEN J. BUNCH, Auctioneer
JOE BUNCH, Auctioneer

BUNCH BROTHERS
AUCTIONEERS & REALTY
P. O. Box 175
Wingo, KY 42088

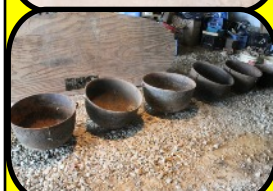
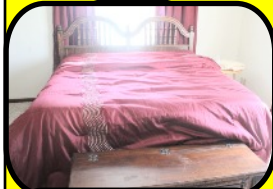
PRESORTED
FIRST CLASS MAIL
U.S. POSTAGE PAID
WINGO, KY
PERMIT NO. 3



FURNITURE, ANTIQUES, HOUSEHOLD



Dining Table, Leaf, 6 Padded Cane Back Chairs; China Cabinet; Antique Sentinel Shortwave Radio; Antique Oak Rocker; 3 Pc. King Bedroom Suite, Bed, Dresser & Chest; Hope Chest; Foyer Mirror & Marble Top Table; 2 Swivel Rockers; Rocker Recliner; Several Lg. Mirrors; End Table; Rattan Glass Top Table & 2 Chairs; Antique Vanity Dresser (No Mirror); Antique Chest of Drawers; 2 Door Wood Cabinet w/Key; Child's Rocker; Cedar Chest; Metal Kitchen Stool; 2 Door Wood Cabinet; Antique Kitchen Cabinet; Wrought Iron Patio Table & 4 Chairs; #3 Butter Churn, Marshall Pottery; #2 Crock, Crown USA; Blue Crock Bowl; McCoy Bowl; Cross Cut Saw; Buck Saw; Myers Hay Trolley; 6 Cast Iron Kettles; Cast Iron Pot; Cast Iron Gypsy Pot, H87; Cast Tea Kettle; Cast Laundry Stove Lamp; (2) Cast Pots w/Lids, 10 qt. & 20 qt.; Cast Skillets, SK #5, Square 5B, Wagner Dutch Oven; Cast Piggy Bank; Milk Can w/Lid; Old Wood Arrows; Wood Pepsi Crate; Old Hand Grinder; Metal Single Trees; Old Metal Match Holder; Wheeling Double Tub; Blue Jars; Jar of Buttons; Ice Tongs; Regal Kerosene Lantern; Wood Nail Keg; Iron Wheels; Presto Pressure Cooker; Water Canner; Meat Grinders; Lg. Yellow Pyrex Bowl; Lg. Oatmeal Glass Bowl; Granite Coffee Pot; Sm Granite Roaster; Granite Dish Pan; National Washboard Co. Washboard; Glass Washboard; Sinclair 5 Gal. Gas Can; Lg. Stainless Pitcher; Fans; Wicker Doll Stroller; GE Ornate Electric Clock; Nice Lg. Lord's Prayer Picture; 2 Iris Vases; Green/Clear Glassware; Gazelle Exercise Machine; Body Vision Deluxe Inversion Table; Royal Majestic Fine China, 8 Pl. Setting; Crystal; Coca Cola Glasses; Carnival Pitcher; Pink Depression; Lg. Wood Fork & Spoon from Japan; Oriental Umbrella; Pictures; Linens; Seashell Décor; Baskets; Coleman Cooler; Strawberry Shortcake Cake Plate & Cover; Platters; Polaroid Land Camera; Polaroid Flash Gun; Polaroid 230 Camera, Case & Flashbulbs; Old Picture Frame w/Curved Glass; Lawn Décor; Picture Frames; Wood Rolling Pin; Barbie Volkswagen; Radio Flyer Toy Wagon & Wheelbarrow; Kitchen Utensils; (2) Carnival Anchor Hocking Bowls; Blue Glass Basket; Corningware; Glass Juicer; Lg. Glass Pickle Jar; Shepherd's Hook; Martin House; Oil Heater, Glass Middle; Toastmaster Toaster Oven; Showtime Rotisserie & BBQ; Food Chopper; Radiator Heater; Shark Steamer; Games; Golf Clubs; Jars; Schwinn Bicycle & More!!!



VISIT www.bunchbrothers.com for more pictures!!

