



# Stormwater Defenders Learning Journey: From Curiosity to Career

An Integrated K-Career Environmental Education Program

**Presented by:** PUDLE Outreach

**Date:** June 2025

# PUDLE Outreach:

## Mission Packs K–Career Program Prospectus

Together, we aim to shape a future of unparalleled opportunities.



### Table of Contents

- A Letter from Sergeant Stormwater
- Mission Central Program Overview and Our Story
- Why Stormwater Defenders?
- Who is this For?
- Program Strengths and Implementation Options
- Mission Packs – Clear Alignment with Educational Goals
  - *Water Protectors (grades K–2)*
  - *The Watershed Team (grades 3–5)*
  - *Mission: Source Control (grades 6–8)*
  - *Stormwater Intel Ops (grades 9–12)*
  - *From Learner to Leader (Career Ready)*
- Available Add-on Enhancements
- Headquarters Overview
- How to Incorporate
- How to Enlist
- Contact Us and Next Steps

# "ATTENTION, RECRUITS!"

Dear Educators, MS4 Outreach Staff, and Community Leaders,

On behalf of the Stormwater Defenders, I want to welcome you to Mission Central! Think of this as your official briefing: together, we're building an unstoppable team of water-wise students, community champions, and future leaders.

Inside this prospectus, you'll see how each Mission Pack trains learners at every grade level to understand water, protect their local watershed, and spread the word to their families and neighbors. With your help, we'll outsmart The Degradator's pollution and keep our rivers, lakes, and oceans clean for generations to come, while exploring the science of water, practices of management and learning important skills for future educational or career pathways.

Suit up, read on, and join our ranks. Watershed City - and every city - needs you!

*-Sergeant Stormwater*



# Mission Central Program Overview

The Stormwater Defenders Learning Journey is a **comprehensive K-12 and Career Ready environmental education program** designed to inspire, inform, and empower students at every stage of learning on water quality and stormwater management. Rooted in STEM concepts and environmental stewardship, this five-tiered Mission Pack series takes students on an evolving journey **from early curiosity to career competence** in stormwater management, pollution prevention, and green infrastructure solutions.

Each grade band (i.e. Grades K-2, Grades 3-5, etc.) is supported with a **customizable baseline**, standards-aligned curriculum that uses **real-world scenarios**, storytelling, **hands-on activities**, and **job-aligned tasks** to meet students where they are and help them grow into active water managers in their schools, neighborhoods, and future careers.

The program's age-appropriate lesson plans can include:

- Mission Pack collateral
- suggested activities and exercises
- decorations and props
- options for utilizing Stormwater Defenders Headquarters (virtual science center)
- access to additional learning available anytime on **StormwaterDefenders.com**

## Our Story

PUDLE Outreach was founded by environmental educators and stormwater experts who saw a gap between regulatory requirements and community knowledge.

By combining education with relatable characters – the Stormwater Defenders – PUDLE Outreach offers customizable awareness and educational tools to promote awareness, inspire action, and build skills that last a lifetime.


# Why Stormwater Defenders?

Everyone loves a superhero.



These superheroes embody one or more aspects of career pathways in water quality and stormwater management. If students gravitate toward a certain character, they can follow that character's activities and sponsored lessons all the way through their education to eventually pursue higher education or careers after high school.

- **Relatable characters** that focus on different elements of stormwater management and fight against pollutants found in runoff.
- Cross-curricular **integration of science, engineering, ELA, and social responsibility.**
- Customizable to local needs and requirements.
- Built with **career access, and place-based learning** in mind.
- **Created to support municipal outreach**, public works education, and school-community partnerships.



**"Never doubt that a small group of thoughtful, committed citizens can change the world; indeed, it's the only thing that ever has."**

**– Margaret Mead**

## Who Is This For?

- Public & private K-12 schools
- Municipal outreach and MS4 permit programs
- Afterschool & STEM enrichment providers
- Career & technical educators
- Environmental education specialists

### Our Mission:

**To inspire, educate, and empower every student to learn about the importance of water management and to shine a light on potential higher education or career journeys in the industry.**

# Program Strengths

**Vertical Integration:** Skills build and deepen across every grade band

**Flexible Delivery:** Works in classrooms, afterschool, summer programs, or outreach events

**Mission-Based Learning:** Encourages problem-solving and purpose

**Customizable:** Can be branded or modified to meet permit requirements or local needs

**Engaging & Inclusive:** Multimodal formats for diverse learners

There are 5 Missions (lesson plans) for each Mission Pack. These can be completed as individual teaching events or combined into a five-day mission. Use them as desired to fit into your focus and learning objectives.

## Flexible Implementation Options

- Perfect for Earth Week, STEM days, or as part of a science or environmental education unit
- Can be delivered in a single session, multiple sessions, or as a station-based interactive experience
- Adaptable for afterschool programs, parks and recreation outreach, or community education partnerships

Collateral and lesson plans for each stage are guided by NGSS, CCSS, and STEM principles, ensuring your teaching time is efficient and impactful. Mission Packs can be customized with branding or messaging for the municipality, program or school district and they can be purchased individually or as a collective program.

Scan the Code to download the “**One Mission. Five Stages. PUDLE Outreach K-12 Program**” Flyer



# The Stormwater Defenders Learning Journey – Mission Packs

From Learner to Leader – Kindergarten to Career Ready

Mission Pack	NGSS Codes	CCSS Codes	STEM Focus
<b>Water Protectors</b>	K-ESS3-1, K-ESS2-2	RI.K.1, SL.K.2	Observation, mapping, simple experiments
<b>The Watershed Team</b>	3-ESS3-1, 3-ESS2-1	RI.3.1, W.3.2	Watershed models, teamwork, data recording
<b>Mission: Source Control</b>	MS-ESS3-3, MS-ETS1-1	RI.6.1, W.6.2	Data collection, infographics, solutions design
<b>Stormwater Intel Ops</b>	HS-ESS3-4, HS-ETS1-3	RI.9-10.1, W.9-10.2	Field inspections, reporting, presentations
<b>From Learners to Leaders</b>	Applied project-based	RI.11-12.1, W.11-12.2	Community projects, leadership, public speaking

## CLEAR ALIGNMENT WITH EDUCATIONAL GOALS

The Mission Packs K-Career program is a clear pathway: each pack builds on the last, deepening knowledge, skills, and community engagement as students grow. Each Pack includes teacher guides, student activities, family engagement materials, and links to local community action.

# Water Protectors

5-Missions for Kindergarten to 2<sup>nd</sup> Grade

## K-2: Water Protectors

**Theme:** Foundational water knowledge and stormwater awareness

**Focus:** What is water? What is pollution? How can I help?

**STEM Benchmarks:** Water cycles, human impact, simple sorting, observational skills

**Instructional Approach:** Storybooks, guided play, art-based expression, simple demonstrations

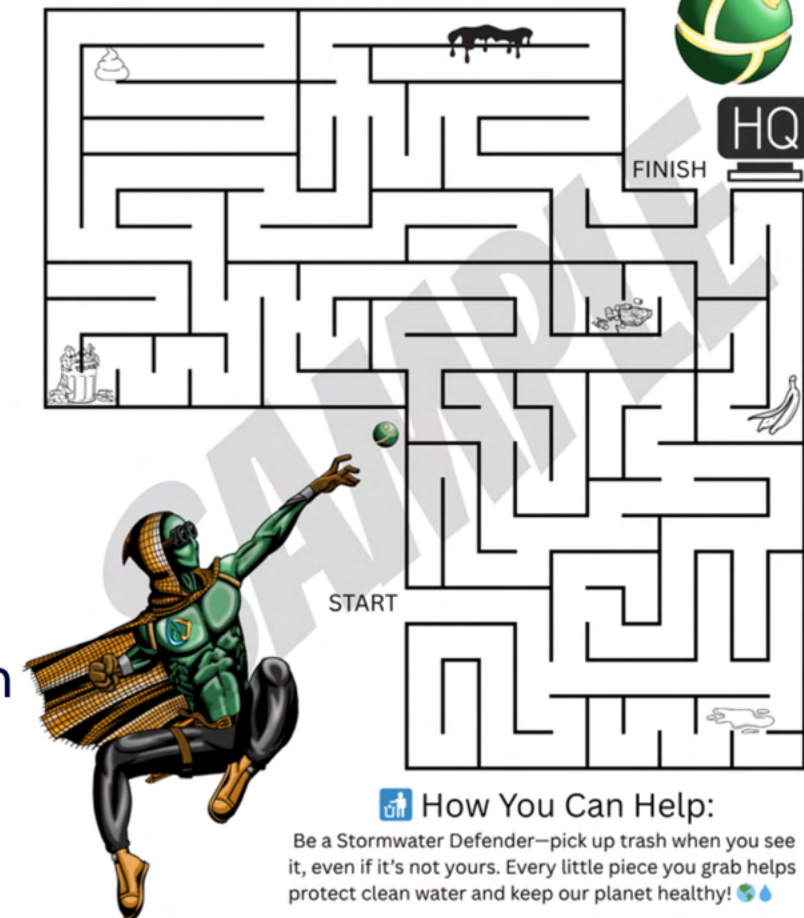
### Overview

The Water is Life curriculum looks at the value that water is to all living things and humanity. This Mission Pack introduces young learners to the concept of stormwater, pollution, and how everyday actions can help protect our water. With the help of the Stormwater Defenders characters, students will engage in interactive storytelling, games, and creative play that build foundational environmental awareness.

- **Standards:** NGSS K-ESS3-3, 1-ESS1-2, 2-PS1-4; Common Core integration
- **Materials Provided:** Printable worksheets, storybooks, activity instructions, educator notes, certificate, and mission charts

### STORMWATER DANGER MAZE

Help TARP reach Stormwater Defenders Headquarters while avoiding obstacles like trash and oil puddles.



## Learning Objectives

Students will:

- Identify different types of water (rain, stormwater, puddles, etc.)
- Understand that pollution can travel with water
- Name ways they can help protect clean water
- Recognize the role of BMPs (Best Management Practices) and trucks that help keep water clean
- Complete 5 missions and earn the title of “Junior Water Protector”

## Educator Preparation Tips

- Print worksheets, mission charts, and certificates in advance.
- Set up classroom bulletin board for student progress.
- Prepare a sticker/stamp system for mission completions.
- Optional: Coordinate with public works, local storm system cleaning or street sweeping company, or a local water utility for guest appearances.

**Mission 1:** Meet the Defenders

**Mission 2:** Name That Type of Water

**Mission 3:** Water Moves and Pollutes

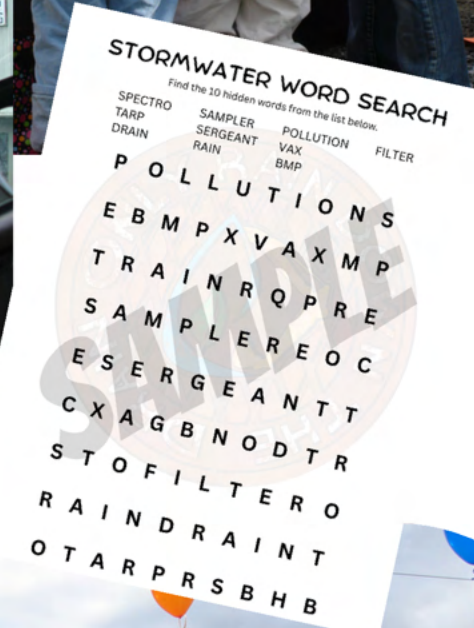
**Mission 4:** Trucks to the Rescue

**Mission 5:** I Am a Water Protector!

**End of Water is Life Mission:**

Students have now completed all 5 Missions and officially earned the title of

**Junior Water Protector!**



Provided Resources for This Pack

K-2	Item	Description
Teacher Tools	Teacher's Guide	Easy-to-follow lesson plans, discussion prompts, supplies, and implementation tips
	Vocabulary & Glossary	Simplified terms tied to water, pollution, and protection
	Assessment Ideas	Informal methods to gauge comprehension through drawing, discussion, and activity completion
Student Activities	Stormwater Defenders Headquarters Passport	A suggested guided path through Stormwater Defender's virtual headquarters
	Story and Comic Books	Origin story of the Stormwater Defenders & Sergeant Stormwater
	Character Coloring Pages	Visual guides to the Defenders and Degraders, helping kids pick a favorite
	Activity Sheets	Matching, drawing, reflection, and counting exercises
	"Only Rain" Pledge	Fill-in-the-blank stormwater protection pledge
Family & Community Engagement	Take-home Tip Sheet	Family-friendly summary of what was learned and how to support it at home
	Water Protector Badge & Certificate	Recognition of program completion and learning achievement

# The Watershed Team

*5-Missions for 3rd to 5<sup>th</sup> grade students*

## 3-5: The Watershed Team

**Theme:** Connection of human activity to hydrology, water as a resource, BMP basics, pollution prevention

**Focus:** What are BMPs? What is a watershed? How does water move through a landscape?

**STEM Benchmarks:** Cause and effect, systems thinking, vocabulary development, map reading

**Instructional Approach:** Posters, games, character cards, role-based projects

### Overview

The **Watershed Connection** looks at how water is connected through the hydrologic cycle and how different activities on a landscape can affect water quality. We focus on stormwater and categories of pollutants that are generated from common activities on a landscape. We introduce stormwater management from both a quantity and quality control perspective and introduce how different surfaces influence that. We introduce the concepts of Best Management Practices (BMP) to control stormwater.

In this Mission Pack, students explore stormwater pollution, how BMPs (Best Management Practices) help, and the heroes who defend Watershed City. With Defender-themed stories, puzzles, and interactive activities, learners will develop environmental awareness and understand their role as part of the solution.

- **Standards:** NGSS 3-ESS3-1, 4-ESS3-2, 5-ESS2-1; Common Core Reading & Writing Integration
- **Materials Provided:** Printable worksheets, stories, map activity, poster template, acronym crossword, certificate, mission chart

## Learning Objectives

Students will:

- Identify types and sources of stormwater pollution.
- Describe how BMPs work to protect waterways.
- Apply critical thinking to stormwater problems.
- Recognize the roles of the Stormwater Defenders.
- Complete 5 missions and earn the title of “Watershed Defender Rookie”.

## Educator Preparation Tips

- Review all materials and print student handouts and mission charts.
- Create a Watershed City classroom map on a bulletin board.
- Print or prepare Defender bios and flashcards.
- Optional: Invite a municipal stormwater worker to share their role.

**Mission 1:** Welcome to Watershed City

**Mission 2:** ABCs of BMPs

**Mission 3:** Defender Duty Roles

**Mission 4:** Puzzle the Problem

**Mission 5:** Defender Day!

**End of The Watershed Connection Mission:**

Students have now completed all 5 Missions and officially earned the title of **Watershed Defender Rookie!**





Provided Resources for This Pack

3-5	Item	Description
Teacher Tools	Teacher's Guide	Easy-to-follow lesson plans, discussion prompts, supplies, and implementation tips
	Vocabulary & Glossary	Simplified terms tied to water, pollution, and protection
	List of Suggested Field Trips	Suggested locations teachers can research to take students to expand the learning adventure
	Defender Day	Outline of suggested activities and sponsorship for an event
Student Activities	Activity Book	<p><b>Including the following:</b></p> <p><b>Color Me Clean Water</b> - Coloring page of Battle Scene and accompanying short story</p> <p><b>Make it Rain</b> - Build your own watershed activity</p> <p><b>Hard or Soft?</b> - Matching activity for pervious vs. impervious surfaces</p> <p><b>The Stormwater Scavenger Hunt</b> - Scavenger Hunt checklist with drawing prompts</p> <p><b>Commingled</b> - Word Search with Vocabulary List</p> <p><b>Your Own Stormwater Superhero</b> - Draw your own superhero and write about how they protect water</p> <p><b>Vax's Truckin' School</b> - Match the equipment to it's action and describe what it does</p> <p><b>Be a BMP Hero</b> - Drag and drop BMPs</p> <p><b>Hole in the Bucket</b> - Crossword puzzle</p> <p><b>BMP's are Us</b> - Scrambled BMPs that need to be unscrambled</p>
Family & Community Engagement	Take-home Tip Sheet	Family-friendly summary of what was learned and how to support it at home
	Water Protector Badge & Certificate	Recognition of program completion and learning achievement

# Mission: Source Control

*5-Missions for junior high students*

## 6-8: Mission: Source Control

**Theme:** Intermediate systems, erosion control, pollution sources and pathways

**Focus:** How do BMPs work? What happens when it rains? How do we measure erosion?

**STEM Benchmarks:** Model design, experimental thinking, data interpretation

**Instructional Approach:** Simulations, erosion modeling, RUSLE application, problem-solving

### Overview

The **Pollution Source Sleuths** focusses on pollution generating sources and how BMPs are used to protect water quality. In this Mission Pack, students explore how BMPs (Best Management Practices) are used in real-life scenarios to manage stormwater and prevent pollution. Through simulations, presentations, and erosion modeling, students become hands-on investigators of stormwater solutions in their own communities. Students come to understand the Stormwater Defender team dynamics and how they work together to fight the degradation caused by The Degraders.

- **Standards:** NGSS MS-ESS3-3, MS-ESS2-4, MS-ETS1-1; Common Core Reading/Science Literacy
- **Materials Provided:** Presentations, story-based challengers, BMP simulation, erosion activity, mission chart, and certificate

## Learning Objectives

Students will:

- Define stormwater and identify common sources of pollution.
- Explain the function of erosion control and stormwater BMPs.
- Analyze stormwater scenarios using scientific reasoning.
- Use simulations to explore different solutions to real-world water problems.
- Complete 5 missions and earn the title of “Certified BMP Explorer”

## Educator Preparation Tips

- Review interactive tools and print student worksheets and mission charts.
- Prepare RUSLE activity supplies (sand tray, cup, straws, or digital version).
- Ensure student devices are ready for digital activities.
- Optional: Plan a virtual guest speaker from a local public works department.

**Mission 1:** BMPs and the Law

**Mission 2:** Choose Your BMP

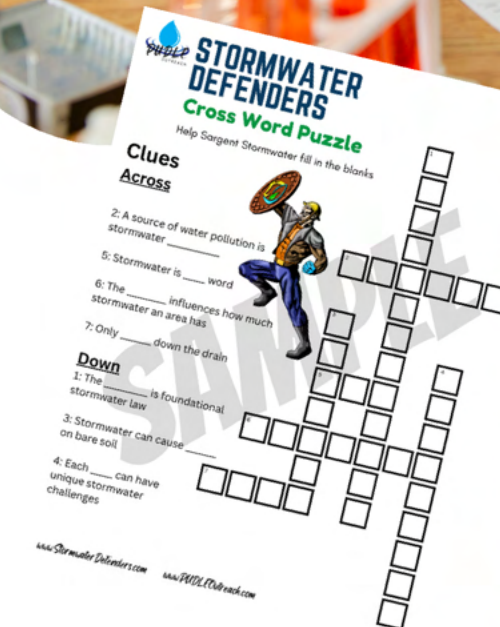
**Mission 3:** The RUSLE Rule

**Mission 4:** Storm Response Challenge

**Mission 5:** Operation Watershed

**End of The Pollution Source Sleuths Mission:**

Students have now completed all 5 Missions and officially earned the title of **Certified BMP Explorer!**



# Provided Resources for This Pack

6–8	Item	Description
Teacher Tools	Teacher's Guide	Easy-to-follow lesson plans, discussion prompts, supplies, and implementation tips
	Vocabulary & Glossary	Simplified terms tied to water, pollution, and protection
	What is Stormwater?	Reflection activity accompanied by video.
	List of Suggested Field Trips	Suggested locations teachers can research to take students to expand the learning adventure
Student Activities	Activity Book	<p><b>Including the following:</b></p> <p><b>Schoolyard Site Walk</b> – Develop a site map of the school yard stormwater system</p> <p><b>Commingled</b> – Word search with vocabulary list</p> <p><b>Your Own Stormwater Superhero</b> – Draw your own superhero and write about how they protect water</p> <p><b>Pollution Source Hunt</b> – Real-life observation checklist and “predict the pollution” quiz</p> <p><b>BMP Match-Up</b> – Match BMPO to real problems and pollutant generating sources</p> <p><b>Acronym Soup</b> – Fill-in-the-blank exercise</p> <p><b>Water Word Cross</b> – Crossword puzzle</p> <p><b>Design a Storm Drain Stencil or Drainmarker</b> – Creative art activity to build public awareness</p> <p><b>Create a Battle Scene</b> – Design your own battle scene either as a poster or diorama</p>
Family & Community Engagement	Take-home Tip Sheet	Family-friendly summary of what was learned and how to support it at home
	Water Protector Badge & Certificate	Recognition of program completion and learning achievement

# Stormwater Intel Ops

*5-Missions for high school students*

## 9–12: Stormwater Intel Ops

**Theme:** Real-world application and regulatory understanding

**Focus:** How do we evaluate sites? What BMPs are best? How do we comply with rules?

**STEM Benchmarks:** Technical reading, applied science, career exploration, quantitative reasoning

**Instructional Approach:** Case studies, inspection reporting, design exercises, interactive projects

### Overview

The **Stormwater Intel Ops** content focusses on implementing BMPs and develop pollution prevention plans for properties. This Mission Pack challenges high school students to apply stormwater principles to real-world conditions. Students investigate erosion, turbidity, BMP selection, and site inspection through scenario-based learning, simulations, and critical thinking. Students learn the basic skills that can be applied to a career path in stormwater.

- **Standards:** NGSS HS-ESS3-4, HS-ETS1-1, HS-ESS3-1; Career & Technology Education Alignment
- **Materials Provided:** Presentations, case study scenarios, storm inspection activity, career integration worksheets, mission chart, and certificate.

## Learning Objectives

Students will:

- Evaluate site conditions contributing to erosion and pollution.
- Apply turbidity and runoff knowledge to real scenarios.
- Select BMPs appropriate for site and soil conditions.
- Interpret regulatory context for stormwater inspections.
- Complete 5 missions and earn the title of “Stormwater Tactician”.

## Educator Preparation Tips

- Prepare access to digital tools and activity sheets.
- Preview videos and simulations before use in class.
- Coordinate optional support from local engineers or construction inspectors.
- Set up a classroom “BMP Field Table” or display area.

**Mission 1:** Turbidity Trouble

**Mission 2:** BMP Selection Strategy

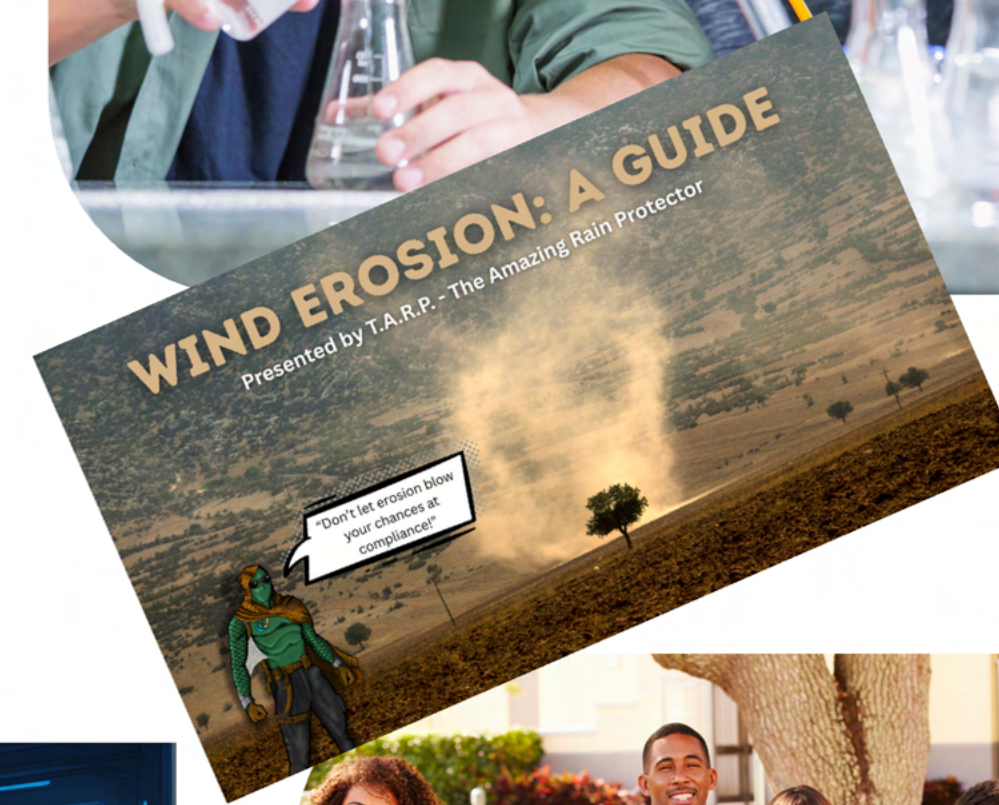
**Mission 3:** RUSLE & Soil Math

**Mission 4:** Field Inspector Roleplay

**Mission 5:** Stormwater Tactician Briefing

**End of The Stormwater Intel Ops Mission:**

Students have now completed all 5 Missions and officially earned the title of **Stormwater Tactician!**



Provided Resources for This Pack

9-12	Item	Description
Teacher Tools	Teacher's Guide	Easy-to-follow lesson plans, discussion prompts, supplies, and implementation tips
	Vocabulary & Glossary	Simplified terms tied to water, pollution, and protection
	What is Stormwater?	Reflection activity accompanied by video.
Student Activities	Activity Book	<p><b>Including the following:</b></p> <p><b>Basics of Hydrology</b> - Design a detention system based on a defined climate and surface scenario</p> <p><b>Mission: Stop the Degradation Plan</b> - Learn about the nature and characteristics of stormwater pollutants</p> <p><b>BMP Case File</b> - Analyze real or fictional pollution scenarios and propose BMPs</p> <p><b>Degrader Dossier Profiles</b> - Match the Degrader to their pollution type</p> <p><b>Career Spotlight</b> - Explore jobs like water engineer, GIS analyst, stormwater inspector, etc.</p> <p><b>Asset ID</b> - Match the structure to the name and describe its function</p> <p><b>Schoolyard Site Walk</b> - Develop a site map of the school stormwater system</p> <p><b>The Mass of Erosion</b> - Calculate soil loss using the RUSLE Rule</p> <p><b>Urban Runoff Mapping</b> - Map impervious surfaces around the school using graph paper</p> <p><b>Stormwater Engineering Basics</b> - Team designing of stormwater infrastructure</p> <p><b>Investigation and Monitoring Training</b> - Learn inspection and sampling principles, site assessment</p> <p><b>Stormwater Policy Proposal Template</b> - Scaffolded template to draft local improvement proposals</p> <p><b>Create a Battle Scene</b> - Poster or diorama activity</p> <p><b>Design a Storm Drain Stencil or Drainmarker</b> - Creative art activity</p>
Family & Community Engagement	Take-home Tip Sheet	Family-friendly summary of what was learned and how to support it at home
	Water Protector Badge & Certificate	Recognition of program completion and learning achievement

# From Learner to Leader

*Missions for high school seniors and post graduate students*

## Career Ready: From Learner to Leader

**Theme:** Workforce preparation for field and technical careers

**Focus:** How do I do this job? What skills do I need? What does a real plan look like? What training or certifications do I need to go to work?

**Workforce Benchmarks:** Environmental career paths, job skills, technical writing, cost analysis

**Instructional Approach:** Field simulations, SWPPP practice, resume building, mock interviews, certification

### Overview

The Career-Ready Mission Pack prepares learners for real-world roles in stormwater inspection, erosion control, and environmental site management. Using a blend of job-based scenarios, report writing, and technical exercises, students explore career pathways while developing practical skills.

- **Standards:** CTE Environmental Science, Earth & Space Sciences, and OSHA-aligned principles
- **Materials Provided:** Career maps, inspection forms, SWPPP templates, quizzes, project-based worksheets, mission chart, and certificate

## Learning Objectives

Students will:

- Demonstrate understanding of stormwater roles and terminology.
- Draft a SWPPP report based on a site scenario.
- Use basic erosion and hydrology calculations for planning.
- Complete an inspection and communicate findings.
- Explore career pathways and develop job-readiness tools.

## Educator Preparation Tips

- Review site scenario packets and sample SWPPPs
- Prepare physical or digital forms for final reports
- Connect with a local contractor or regulator for a guest Q&A
- Provide a space for students to track their cadet progress.

**Mission 1:** Stormwater Jobs 101

**Mission 2:** What is a SWPPP?

**Mission 3:** Cut, Fil, and Trucks

**Mission 4:** Field Work & Inspection

**Mission 5:** Final Cadet Challenge

## End of The Career-Ready Mission:

Students have completed the Stormwater Cadet program and are ready to apply their knowledge to real-world fieldwork and environmental careers.

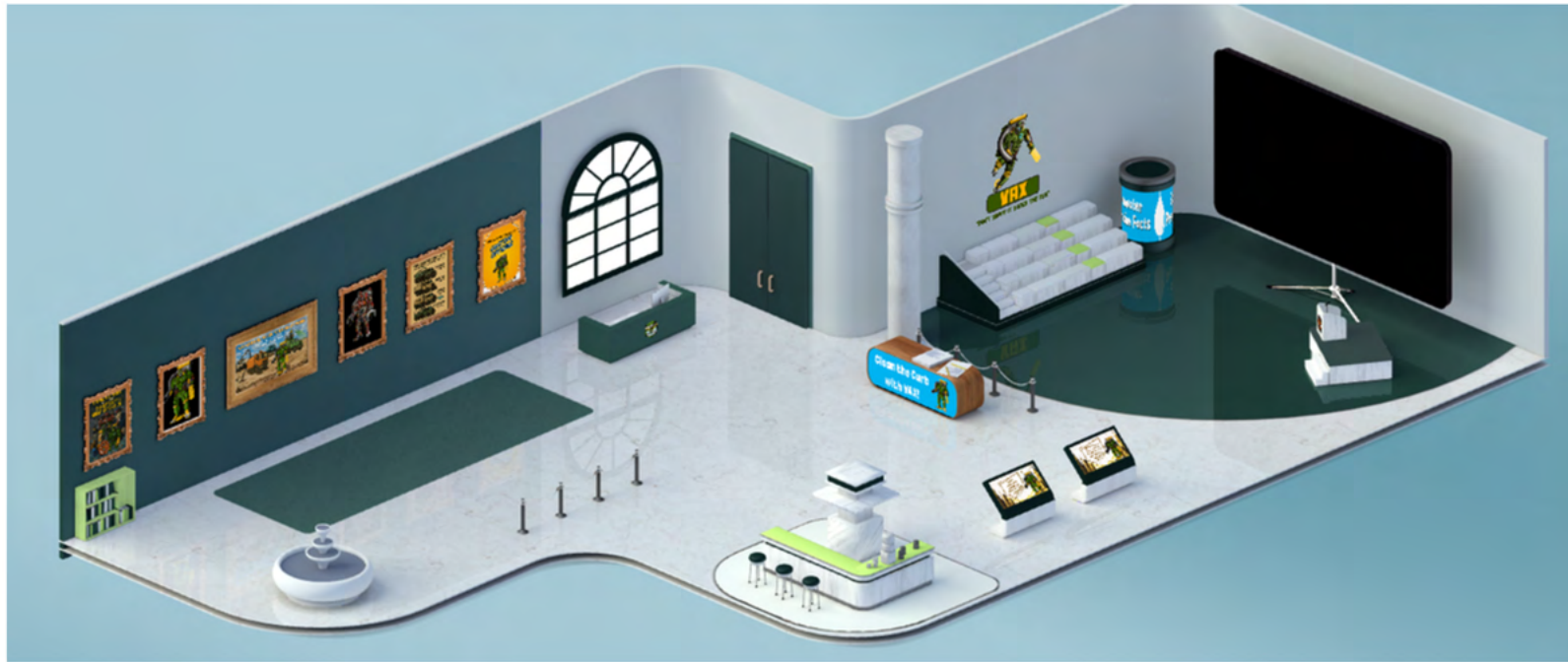


Provided Resources for This Pack

Career-Ready	Item	Description
Teacher Tools	Teacher’s Guide	Easy-to-follow lesson plans, discussion prompts, supplies, and implementation tips
	Vocabulary & Glossary	Simplified terms tied to water, pollution, and protection
	What is Stormwater?	Reflection activity accompanied by video.
Student Activities	Work Book	<p><b>Including the following:</b></p> <p><b>Module 1 Meet the Pros</b> – Students explore 6-8 real jobs using role cards and video interviews.</p> <p><b>Module 2 Build a Resume</b> – Using a guided worksheet, students list relevant skills from previous coursework, volunteer work, and this program to create a real resume.</p> <p><b>Module 3 Conduct a Stormwater Inspection</b> – Using the provided inspection form, students walk their school grounds like a stormwater inspector.</p> <p><b>Module 4 Mock Interview Role Play</b> – Students work in pairs or with a mentor.</p> <p><b>Module 5 Design a BMP Improvement Plan</b> – Students research local stormwater challenges and propose a BMP improvement for real or simulated locations.</p> <p><b>Module 6 Path to Pro Map</b> – A visual roadmap showing how to move from high school &gt; training/certification &gt; first job &gt; advanced roles in the field. Includes optional college and union paths.</p>

## Optional Add-ons

- Storm War Poster
- Life-size cardboard characters



## Bonus Features (Digital or Live Delivery Options Available)

- **Importance of Water** video with child-friendly narration
- **Stormwater Defenders Anthem** – a catchy, kid-safe tune about water protection
- **“Which Defender Are You?” personality quiz** – supports self-awareness and engagement
- **Games and Stories** – Learning can continue beyond a one-time event



Stormwater Defenders is a program by PUDLE Outreach in partnership with the CWT Training Academy. For more information or custom classroom support, visit [www.pudleoutreach.com](http://www.pudleoutreach.com).

# Headquarters: Overview

## Stormwater Defenders

Headquarters is an interactive learning platform designed for various educational and corporate uses. This platform allows for extensive customization of branding, content, and room layouts enabling users to host events ranging from virtual trade shows and conferences to educational programs for different age groups. Key features highlighted include interactive stations linking to external educational resources, live chat and direct messaging capabilities, and the option to host live presentations with multiple speakers. The platform also incorporates gamification elements like earning rewards to customize avatars, fostering an engaging and user-friendly experience for all participants.



Scan the Code  
below to take a  
tour of  
Stormwater  
Defenders HQ

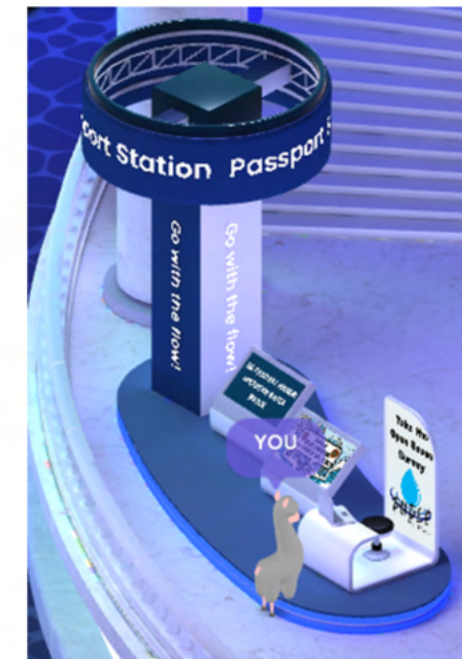
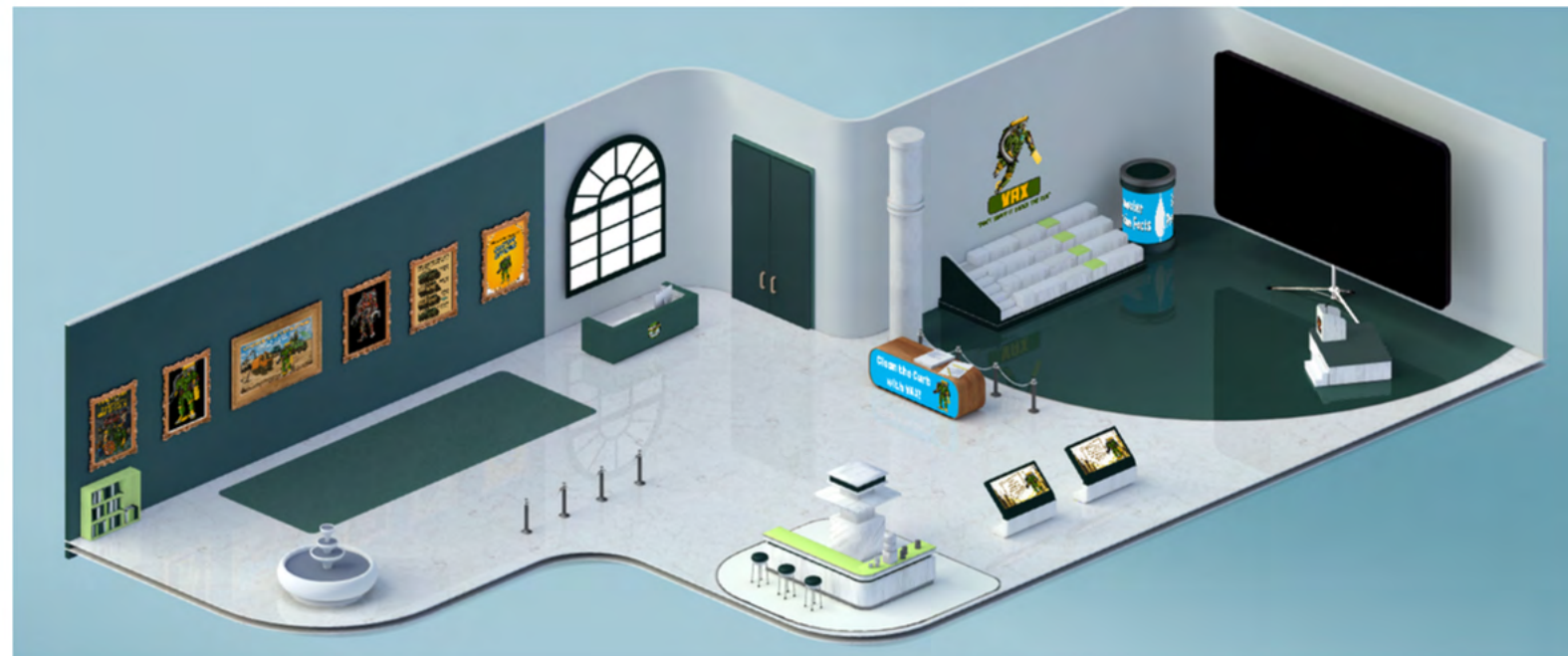


# Headquarters: Overview

## Interactive Engagement Features:

- **Live Chat and Direct Messaging (DM):** Users can engage in chats within a room or send direct messages (DMs) to specific individuals. This is only visible to those in your group.
- **Incentivizing Exploration with Rewards:** The platform plans to introduce more customizations to llamas (avatars) that can be used as an incentive system. Users can be motivated to progress through headquarters and visit specific stations by winning rewards, earning badges, or collecting tokens as they go. This “passport concept” aims to help users identify locations within rooms to gather information. Coins will be earnable to further customize llamas with “skins” and “outfits”.
- **Multiple Speakers and Panels:** The system supports multiple speakers providing content simultaneously, allowing for panels or numerous presenters. This capability is expected to expand to accommodate many speakers, resembling a “massive Zoom conference” where participants can speak, and some can be muted for conversation management.

Scan the Code below  
to take a tour of  
Stormwater  
Defenders HQ



## Content Delivery Features:

- **Branded Rooms:** The initial entry point, often used as a welcome center, can be linked to a URL website to provide event information, lessons, or link to a form for check-in. This serves as “Grand Central Station number one” and is the starting point for visitors to get their “mission” for navigating headquarters. It can be system branded with custom logos (e.g., school or municipality logo) instead of the default shield.
- **Customizable Stations:** Throughout the headquarters, various “stations: (tall podiums or kiosks) are available that link out to URLs. These can direct users to pre-existing resources or custom-built resources (like new activities, webpages) that the platform can help create. Content can range from in-depth reading materials to simple pages with a video. In addition to podium stations, some rooms feature kiosks and pictures on the wall that function as slide decks for presentations. Smaller stations can pull up inline websites. There are also “picture windows” with potential future enlargement capabilities.
- **Age-Appropriate Content Adaption:** The platform aims to provide different age-class material even within the same room, addressing concerns about content suitability for various age groups.

## Multi-Event Scalability:

The setup allows for multiple events concurrently, such as a main headquarters grand room presentation running alongside remote presentations in smaller sub-rooms. This supports both scaled-down private events and large-scale, district wide “extravaganzas”.

Overall, the virtual space is designed to be customizable to meet diverse needs, offering a modern, engaging, and efficient way to deliver information and facilitate interaction.

# How to Incorporate

**Easy to Implement. Flexible to Your Needs.**

PUDLE Outreach is designed to fit into any classroom, club, afterschool program, or community education setting. Here's how to make it work for you:

## **1: Choose Your Mission Pack**

Select the grade-appropriate Pack(s) for your students. Many schools use multiple Packs across grades for a school-wide approach.

## **2: Review the Missions and Supplies in each Mission Pack**

Every Pack includes step-by-step lesson plans, activity sheets, take-home family connections, and extension ideas.

## **3: Customize with Existing Curriculum (if desired)**

Work with PUDLE Outreach to customize the deliverables and collateral.

## **4: Schedule Headquarters Event**

Work with PUDLE Outreach to customize and schedule access to Headquarters.

## **5: Engage the Community and Local Municipality**

Encourage students to share what they learn with families. Consider hosting a "Water Defender Week," science fair, or site tour to showcase students work.

## **6: Extend with Real-World Events**

Schools often add community cleanups, guest speakers from public works or local environmental agencies, or even a "Touch-A-Truck" day featuring stormwater equipment.

## **7: Purchase Add-ons and Enhancements**

Other merchandise, games and decorations can add to the learning experience and promote ongoing learning beyond the scheduled events.

# How to Enlist

Enlist in a **Wavemakers Annual Enlistment Subscription** level that meets your needs.  
Use as the platform to build Mission Packs for your classroom, school, district, or municipality.

WAVEMAKERS ANNUAL ENLISTMENT SUBSCRIPTION <i>(Includes all products described above, EXCEPT PUDLE Games and Artwork, sold separately)</i>	Sprinkle Level Classroom or Event	Downpour Level School or Multiple Event	Flood Level School District / Municipality
Teacher/User	1 teacher or class	All teachers in one school	Multiple schools / All teachers in District
Mission Pack (digital)	Single Mission Pack	Up to two Mission Packs	All Mission Packs
Teacher/Trainer Suggested Lesson Plan	Included with selected Mission Packs		
Headquarters Pass	Single Event Pass - 300 Users	6 Events Per Year - 300 users per event	Unlimited Scheduled Events - 300 Users per event
Customization Options Available	No	Yes	Yes
Pricing	\$1450	\$3557	\$4995
Additional Features			
Optional Educational and Certifications Tracking and Reporting Portal	\$1,500.00 integration fee (training content purchased separately)		
Discounts on Certifications and Career Development Training	No	No	Yes
Additional Mission Packs	See Mission Pack Table Above		
PUDLE Games and Classroom Materials	Card game, Puzzles and Posters Sold Separately		
Books	Activity, Sticker and Story Books Sold Separately		

**Mission Packs can be sold separately, however if not with a subscription, Headquarters Passes are not included!**  
Pricing in this table is for purchasing Mission Packs in addition to your Enlistment subscription package. Price is subject to tax.

Mission Pack	Price	Format	Age Group
Water Protectors	\$475	Digital	K-2
The Watershed Team	\$475	Digital	3-5
Mission: Source Control	\$515	Digital	6-8
Stormwater Intel Ops	\$515	Digital	9-12
From Learner to Leader	\$1025	Digital	K-Career

### **Flexible, Scalable, and Grant-Friendly**

Bringing PUDLE Outreach to your school or community is easy to budget and often eligible for environmental education, STEM, or sustainability grants.

#### **Common funding methods include:**

- Science or environmental education budgets
- Local stormwater utility or public works funding
- PTA/PTO or school foundation mini-grants
- Community sponsorship from local businesses
- Partnership with municipal or regional stormwater agencies



TIP: Our team can provide grant support language and sample proposals to help secure funding.

# Contact and Next Steps

Ready to Raise a New Generation of Water Protectors?

Here's how to get started:

**Step 1: Review the Subscription Terms and Conditions**

**Step 2: Complete an Enlistment Request Form**

**Step 3: Connect with our team to customize an implementation plan for your school or community.**

**CONTACT US:**

**EMAIL: [OUTREACH@PUDLEGEAR.COM](mailto:OUTREACH@PUDLEGEAR.COM)**

**PHONE: 472-259-2792**

**WEBSITE: [WWW.PUDLEOUTREACH.COM](http://WWW.PUDLEOUTREACH.COM)**

**Join the Stormwater Defenders today – because every drop counts!**