



SEG | AAPG

image

International Meeting for Applied Geoscience & Energy

The World's #1 Geoscience Event



Connecting
IDEAS to
POWER
the **World**

17–20 August 2026 • George R. Brown Convention Center • Houston, Texas



IMAGEEvent.org



FOLLOW IMAGE ON SOCIAL MEDIA:



REGISTER EARLY TO SAVE!

Tier One Deadline is 7 July

Table of Contents

Thank You to Our Sponsors.....	3	Breakfast, Luncheons & Receptions	18
IMAGE '26—Transforming Ideas into Energy Solutions	4	The Hub of Innovation:	
Steering Committee	6	Specialized Pavilions.....	20
Oversight Committee	7	New Technology Showcase	22
Technical Program Grid: Oral Sessions.....	8	Geothermal Hub:	23
Technical Program Grid: Poster Sessions.....	10	Inside IMAGE Podcast	23
Schedule at a Glance	12	Gathering Place.....	24
Opening Session	14	Student Events.....	24
All-Convention Luncheon.....	14	Bookstore	25
Honors and Awards Ceremonies	14	SEPM Activities.....	25
Discovery Thinking Forum.....	15	Short Courses.....	26
Women’s Network Executive Panel	16	Workshops	27
Michel T. Halbouty Lecture.....	17	Field Trips.....	28
The Bureau of Economic Geology		Registration Details.....	30
Core Exhibition	17	Hotel Information	31
CAN (Career Advancement Network)		Exhibit Hall	32
Hiring Event.....	17	Exhibitor List.....	34

Thank You to Our Sponsors

The International Meeting for Applied Geoscience and Energy is made possible in large part through the generous support of our sponsors. Their crucial contributions directly fund and enable many of the convention's essential programs, networking breaks, and key events. We extend our sincere gratitude for their vital partnership.

Diamond Sponsors



Titanium Sponsors



Platinum Sponsors



Gold Sponsors



Silver Sponsors



Bronze Sponsor


Media Sponsors



List current as of 6 May

IMAGE '26—Transforming Ideas into Energy Solutions

From carbon management to digital technologies, connect across disciplines at IMAGE to turn technical insights into immediate industry impact.

 On behalf of the IMAGE Steering Committee, we are pleased to invite you to IMAGE, taking place 17–20 August 2026 at the George R. Brown Convention Center in Houston, Texas.

Recognized as the **world's leading geoscience event**, IMAGE brings together the global geoscience and energy community to advance subsurface understanding and help shape the future of energy.

This year's theme, **Connecting Ideas to Power the World**, reflects a simple but powerful truth: the most impactful ideas in our industry are born through connection — across disciplines, sectors, geographies, and generations. IMAGE is designed to foster those connections, creating an environment where ideas are not only shared, but challenged, refined, and transformed into real-world solutions.

The technical program remains at the core of IMAGE, which continues to deliver the largest and most influential technical program in applied geoscience and energy, with **more than 1,000 presentations** and a truly global audience representing over 43 countries. The technical program spans the full spectrum of geoscience disciplines underpinning subsurface understanding and the evolving energy landscape, including oil and gas, carbon management, geothermal, near-surface applications, digital technologies, and emerging energy systems. Each session is curated for scientific rigor and real world relevance — providing insights that can be applied immediately to today's challenges and evolving industry demands.

The IMAGE Exhibition is a **premier marketplace for innovation and collaboration**. More than an exhibition floor, it is a dynamic environment where technologies, ideas, and partnerships come to life — connecting industry leaders and solution providers with the broader geoscience community. We invite you to experience the 'shows within the show' through IMAGE Hubs and Pavilions, which spotlight the most critical and fast-evolving areas in geoscience and energy. Specialized hubs and pavilions highlight key focus areas such as digital transformation, carbon management, geothermal

and near-surface applications, and global energy opportunities—creating spaces designed for deeper engagement, focused learning, and strategic dialogue. The Global Energy Opportunities Pavilion continues to evolve as an intelligence driven hub for strategic dialogue, providing a worldwide showcase for national oil companies, ministries, and government agencies to promote a broad spectrum of energy and investment opportunities. Representatives from around the globe share insights on exploration priorities, energy transition strategies, cross border opportunities, and future trends while engaging directly with IMAGE attendees. These interactions help bridge the gap between technical innovation and real-world pathways to implementation and investment.

IMAGE is also deeply committed to the next generation of geoscientists and energy professionals. IMAGE offers dedicated **programming for students and early career professionals**, including interactive learning experiences, skill building opportunities, and meaningful access to mentors and industry leaders. These connections play a critical role in sustaining a strong, innovative, and forward-looking geoscience community.

Above all, IMAGE is about what happens when people come together—in technical sessions, on the exhibition floor, in pavilions and hubs, and in the informal conversations that often spark the most powerful ideas. It is in these moments—planned and unplanned—that new ideas take shape, collaborations begin, and the future of our industry is advanced. Once a year, our global community gathers in one place. IMAGE is that moment.

We look forward to welcoming you to Houston for an engaging and an impactful IMAGE. Join us to connect, collaborate, and be part of the ideas shaping the future of energy.

With appreciation,

Molly Turko & Edith Miller
General Co-Chairs, IMAGE Steering Committee

Follow #IMAGE2026 on social media to stay up-to-date on IMAGE planning in real time.



Steering Committee



Edith Miller

CHEVRON
SEG General Co-Chair



Molly Turko

DEVON ENERGY
AAPG General Co-Chair



Adam R. Goss

CNOOC INTERNATIONAL
AAPG Technical Program
Co-Chair



Bunmi Elebiju

bp
SEG Technical Program
Co-Chair



Erkan Ay

BHE GT&S
SEG Technical Program
Vice-Chair



Matt Ramos

CHEVRON
AAPG Technical Program
Vice-Chair



Howard Harper

SEPM
SEPM Coordinator



Yuriy Gubanov

AWS
Digital Pavilion
Co-Chair



Maitri Erwin

MICROSOFT
Digital Pavilion
Co-Chair



Matt Fry

KATALYST DATA MANAGEMENT
Digital Pavilion
Co-Chair



Jennifer Holley

bp
K-12 Teachers
and Young People



Amanda Johnston

TOTALENERGIES
College/Graduate Students
Co-Chair



Jonathan Membreno

OXY
College/Graduate Students
Co-Chair



Elvira Pureza Gomez

THRUST BELT IMAGING
Environmental, Social, and
Governance (ESG) Co-Chair



Daniella Bordon

BGP OFFSHORE
Environmental, Social, and
Governance (ESG) Co-Chair



Kevin J. Bradford

SHELL (RETIRED)
Next Gen Programs Chair



Carlos A. Uroza

BUREAU OF ECONOMIC
GEOLOGY, UNIVERSITY OF
TEXAS AT AUSTIN
Core Exhibits Chair



David Lankford-Bravo

bp
Young Professionals Chair



Cucha López

EXXONMOBIL UPSTREAM
Access and Culture Co-Chair



Peace Eze

S&P GLOBAL
Access and Culture Co-Chair



Mohammed Hegazy
TGS
Sponsorships Chair



Caroline Wachtman
OXY
Carbon Management
Pavilion Co-Chair



Camelia Knapp
OKLAHOMA STATE UNIVERSITY
Carbon Management
Pavilion Co-Chair



Jeremiah Bernau
CHEVRON
Audience Engagement Advisor



Wadii El Karkouri
TGS
Industry Engagement Chair



Denise Benoit
XGS ENERGY
Geothermal Hub Co-Chair



Roberto Wagner
XGS ENERGY
Geothermal Hub Co-Chair



Susan Nash
AMERICAN ASSOCIATION OF
PETROLEUM GEOLOGISTS (AAPG)
New Technology Showcase Chair



Bob Fryklund
S&P GLOBAL
Invited Programs Chair



Andrea Lovatini
SLB
Invited Programs

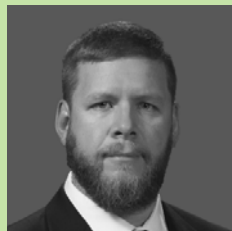
Oversight Committee



Tony Manzur
S&P GLOBAL
Invited Programs



John Eastwood
EXXONMOBIL (RETIRED)
Chair



Steve Sloan
U.S. ARMY ERDC
SEG Voting Member



Ken Tubman
SAEXPLORATION
SEG Voting Member



Charles A. Sternbach
STAR CREEK ENERGY
AAPG Voting Member



Bob Fryklund
S&P GLOBAL
AAPG Voting Member



Tom Wilker
AMERICAN ASSOCIATION
OF PETROLEUM
GEOLOGISTS (AAPG)
AAPG Executive Director



Jim White
SOCIETY OF
EXPLORATION
GEOPHYSICISTS (SEG)
SEG Executive Director



Alan Wegener
AMERICAN ASSOCIATION
OF PETROLEUM
GEOLOGISTS (AAPG)
Staff Liaison



Tom Agnew
SOCIETY OF
EXPLORATION
GEOPHYSICISTS (SEG)
Staff Liaison

Technical Program Grid: Oral Sessions

Room	Tuesday, 18 August				Wednesday,	
	8:00 a.m.–9:40 a.m.	10:20 a.m.–12:00 p.m.	1:20 p.m.–3:00 p.m.	3:40 p.m.–5:20 p.m.	8:00 a.m.–9:40 a.m.	10:20 a.m.–12:00 p.m.
351A	SS 1: Recent Advances and the Road Ahead: The Energy Evolution in Action: Geoscientists Driving Innovation 1	SS 4: Recent Advances and the Road Ahead: The Energy Evolution in Action: Geoscientists Driving Innovation 2	SS 6: Recent Advances and the Road Ahead: Global Search for High Impact Frontier Plays: Basins, Technologies, and Pathways to Value	SS 9: Building the Exploration Company of the Future	FWI 7: Case Studies from Gulf of America 1	FWI 8: Case Studies from Gulf of America 2
360A	BH 1: Machine Learning and Digital Applications	AFR 1: Unlocking Reservoir and Traps in Underexplored and Matured Regions	SILIC 1: Advances in Onshore and Nearshore Depositional Systems Analysis and Reservoir Evaluation	SS 10: New Instrumentation: In Honor of José (Pepo) Arce	SS 13: Geologic Hydrogen Exploration and Production 1	SS 18: Geologic Hydrogen Exploration and Production 2
360B	FWI 1: Novel Approaches and Workflows	FWI 3: Cycle Skipping and Novel Misfit Functions	FWI 5: Theory and Methods	FWI 6: Time Lapse	SS 14: Near Surface Geophysics and the Human-Impacted Environment 1	SS 19: Near Surface Geophysics and the Human-Impacted Environment 2
361A	AP 1: Integrated Reservoir and Petroleum System Case Studies from Asia Pacific	MME 1: Mineral Prospectivity Mapping and Data Processing	LAC 2: Campos and Santos Basins	EEM 1: Imaging and Characterizing Complex Reservoirs	LAC 3: Venezuela, and Trinidad and Tobago	LAC 4: South Atlantic and Conjugate Margin
361B	LAC 1: Guyana and Suriname	AAS 1: Frequency Dependent Seismic Analysis	NS 1: Advances in Near Surface Seismic	SS 11: Optical Fiber: The value of Optical Measurement: Lessons Learned and Way Forward	SS 15: Agentic Artificial Intelligence for Geoscience: Principles and Case Studies	SMT 1: Numerical Methods, Wave Propagation and Wave Phenomena 1
362A	INT 1: Foundation Models	DMLA 2: Artificial Intelligence-Driven Probabilistic Modeling of Subsurface Systems	INT 2: Facies Interpretation Machine Learning	INT 3: Reservoir Characterization and Modeling	DMLA 6: Seismic Processing 1	DMLA 8: Seismic Processing 2
362B	SP 1: Complex-Structure Imaging Case Studies	SP 2: Internal Multiples, Deconvolution and Post-Imaging Multiple Attenuation	SP 3: Deblending and Simultaneous-Source Separation	SP 4: Multiple Attenuation, Deconvolution and Wavefield Separation	SP 5: Emerging Technologies: Quality Control and Distributed Acoustic Sensing	SP 6: Interpolation, Reconstruction and 4D Regularization
370A	SS 2: Geoscientists without Borders: Seismic Safety and Coastal Stewardship	SS 5: Geoscientists without Borders: Water Security	SS 7: Resource Quantification and Assurance 1	SS 12: Resource Quantification and Assurance 2	SS 16: History of Petroleum Geosciences 1	SS 20: History of Petroleum Geosciences 2
370B	FWI 2: Case Studies from the Middle East and Africa	FWI 4: Case Studies from South America and the Caribbean	AAS 2: Stochastic/ Bayesian Inversion	AAS 3: Elastic Properties	TL 1: Full-Waveform Inversion	TL 2: Acquisition, Processing and Analysis
371A	SS 3: Exploration, Mineral Science and Mining of the Moon, Mars, and Asteroids	USC 1: Workflows	USC 2: Gulf Coast Unconventional Plays and Applied Workflows	USC 3: Gulf Coast Reservoir Characterization and Stratigraphic Frameworks	RCM 2: Geological Framework and Modeling	LCS 1: Storage Characterization 1
371B	RCM 1: Unconventional Reservoirs	ACQ 1: Marine Technology	ACQ 2: Offshore Acquisition and Monitoring	ACQ 3: Compressive Sensing and Sampling	ACQ 4: Survey Design and Modeling	ACQ 5: Land Hardware Technology
372A	DMLA 1: Velocity Model Building	DMLA 3: Foundation Models for Interpretation	DMLA 4: Deep Priors for Full-Waveform Inversion	DMLA 5: Wavefield Simulation	DMLA 7: Advanced Artificial Intelligence Workflows for Seismic Interpretation and Subsurface Imaging	DMLA 9: Machine Learning from Reservoir Properties to Portfolio Decisions
372B	CAEV 1: Deepwater Carbonates	GM 1: Interpretation Examples and Case Studies	SS 8: Challenges and Solutions: The Current State of Geoscience Education, Industry Needs and Society Impacts	GEFE 1: Geoscience Education Across the 20th and 21st centuries: A View from the Trenches	INT 4: Stratigraphy	CAEV 2: Advances in Characterizing Carbonates
372C	PS 1: Petroleum Systems of the Americas	PS 2: Fluids	SG 1: Faults, Fractures, and Fluids	PS 3: Maturity and its Consequences	SS 17: Novel Passive Seismic Case Studies	SG 2: Structural Styles: Lithosphere to Thin Section

19 August		Thursday, 20 August			
1:20 p.m.–3:00 p.m.	3:40 p.m.–5:20 p.m.	8:00 a.m.–9:40 a.m.	10:20 a.m.–12:00 p.m.	1:20 p.m.–3:00 p.m.	3:10 p.m.–4:50 p.m.
SS 21: Discovery Thinking: Analogs of Perseverance 1	SS 24: Discovery Thinking: Analogs of Perseverance 2	FWI 11: Case Studies from Europe and Asia	FWI 12: Elastic and Reservoir	FWI 13: Elastic Inversion Methods	FWI 14: Deep Learning
SS 22: Advances in Next-Gen Geothermal: Geologic Insights from Active Projects	SS 25: Geothermal Resource Exploration and Characterization	SS 26: SEPM Research Symposium: Critical Minerals and Geothermal Energy in Sedimentary Systems 1	SS 28 : SEPM Research Symposium: Critical Minerals and Geothermal Energy in Sedimentary Systems 2	SS 29: Critical Minerals Economy: Strategy, and Finance	
FWI 9: Imaging and Amplitude Versus Angle	FWI 10: Land	DAS 1: 3D Vertical Seismic Profiling Case Studies	DAS 2: Surface and Multicomponent	DAS 3: Microseismic and Machine Learning	DAS 4: Fracture Characterization
LAC 5: Unlocking Opportunities in Latin America	MME 2: Modeling and Data Processing	AFR 2: Benefits of Integrating Relevant Data and it's Impact in Frontier Exploration	IPS 2: Hydraulically-Induced Fracture Network Monitoring	LAC 7: Mexico	RP 3: Integrated Applications
SMT 2: Imaging, Inversion, and Interpretation	AP 2: Tectonostratigraphy and Hydrocarbon Systems in Complex Basins	NS 2: Electrical and Electromagnetic Methods	LAC 6: Brazil Equatorial Margin		
IPS 1: Induced Seismicity and Monitoring	SMT 3: Numerical Methods, Wave Propagation and Wave Phenomena 2	DMLA 12: Agentic Artificial Intelligence and Foundation Models	RP 1: Fundamentals and New Insights	RP 2: Lab Experiments	IPS 3: Induced Seismicity and Geothermal
SP 7: Tomography and Full-Waveform Inversion	SP 8: Least-Squares Imaging and Kirchhoff	SP 9: Emerging Technologies: Generative Artificial Intelligence and Learning Workflows	SP 10: Bandwidth Enhancement, including Q Compensation	SP 11: Artificial Intelligence Denoising and Signal Enhancement	SP 12: Near Surface, Statics and Shallow-Hazard Processing
SS 23: Advancing Near-Surface Imaging and Characterization through New Hardware and Algorithms	BH 2: Advances in Subsurface Interpretation	SS 27: Best of SEG Honorary Lecturer's	INT 6: Structural Interpretation	RUBD 1: Exploration Risk and Decision Frameworks	RUBD 2: Integrated Decisions in Field Development
TL 3: Modeling, Inversion and Case Studies	EM 1: New Advancements in Electromagnetic Applications	MECA 1: Seismic Insights Across Regional Basins	NS 3: Machine Learning and Artificial Intelligence Applications	NSF 2: Geothermal	NSF 3: Geothermal and Lithium
LCS 2: Storage Characterization 2	LCS 3: Storage Characterization and Modeling	USC 4: United States Gulf Deepwater	USC 5: Permian and Unconventionals	LCS 4: Advances in Monitoring Technology	LCS 5: Storage Case Studies
ACQ 6: Land Seismic Challenges	AAS 4: Multicomponent Seismic	AAS 5: Anisotropy	AAS 6: Post Stack Seismic Techniques	AAS 7: Fracture Characterization	AAS 8: Amplitude Versus Offset Inversion
DMLA 10: Machine Learning for Structural Geology and Borehole Imaging Analysis	DMLA 11: Machine Learning-Driven Seismic Inversion	DMLA 13: Seismic Interpretation 1	DMLA 14: Seismic Interpretation 2	DMLA 15: Novel Concepts for Seismic Interpretation	DMLA 16: Next-Generation Artificial Intelligence Workflows for Well Logs and Reservoir Characterization
GEFE 2: Creating Digital Outcrop Models for Industry and Beyond	GEFE 3: Virtual Geology Field Trips and Training	INT 5: Interpretation Methods	INT 7: Integrated Workflows	INT 8: Petroleum Systems	RCM 4: Seismic Inversion and Reservoir Prediction
SG 3: Rock Mechanics and Deformation	RCM 3: Dynamic Reservoir Characterization	SILIC 2: Integrated Perspectives on Deepwater Stratigraphy and Channelized Systems	NSF 1: Geological Hydrogen		

Technical Program Grid: Poster Sessions

STATION	Tuesday, 18 August				Wednesday,	
	10:20 a.m.–12:00 p.m.	10:20 a.m.–12:00 p.m.	1:20 p.m.–3:00 p.m.	3:40 p.m.–5:20 p.m.	10:20 a.m.–12:00 p.m.	10:20 a.m.–12:00 p.m.
EXHIBIT HALL	1	DMLA P3: Seismic Processing 1	DMLA P4: Advanced Artificial Intelligence for Reservoir Connectivity, Forecasting, and Field Development	DMLA P5: Seismic Interpretation 1		DMLA P6: Seismic Inversion with Machine Learning
	2	SG P1: Faults, Fractures and Fluids	STUD P1: Field Applications	LAC P1: Campos and Santos Basins		DMLA P7: Artificial Intelligence-Driven Lithology and Geochemical Characterization
	3	IPS P1: Ambient Field Methods	GM P2: Inversion and Data Processing	SMT P2: Modeling and Migration		FWI P1: Deep Learning
	4	IPS P2: Induced Seismicity and Monitoring	STUD P2: Seismic Migration	SUS P1: Advances in Sustainable Geo-energy Development 1		FWI P2: Diffusion Models
	5	NS P1: Urban, Geotechnical, and Archaeological Applications	STUD P3: Deep Learning	STUD P4: Depositional Systems and Reservoirs		FWI P3: Imaging and Workflow Design
	6	SMT P1: Modeling in Anisotropic Media	TL P1: Synthetic and Case Studies	SUS P2: Advances in Sustainable Geo-energy Development 2		FWI P4: Neural Inversion Frameworks
	7	SP P1: Resolution Enhancement, Diffractions and Adaptive Subtraction	TL P2: Theory, Uncertainty, and Machine Learning	STUD P5: Climate, Environment, and Community		NS P2: Inversion of Near Surface Data

STATION	Tuesday, 18 August				Wednesday,		
	8:00 a.m.–9:40 a.m.	10:20 a.m.–12:00 p.m.	1:20 p.m.–3:00 p.m.	3:40 p.m.–5:20 p.m.	8:00 a.m.–9:40 a.m.	10:20 a.m.–12:00 p.m.	
3 rd LEVEL	1	DMLA P1: Full-Waveform Inversion	GEFE P1: Creating Hands-On Educational Experiences for Future Generations	PS P1: Geochemical Techniques	SP P2: Deghosting and Bandwidth Control	CAEV P1: Carbonates by the Numbers	SILIC P1: Siliciclastic Characterization: Applications from Field-Based Studies
	2	DMLA P2: Rock Physics and Reservoir Characterization	INT P1: Inversion	PS P2: Production, Geochemical Techniques and Case History	SP P3: Denoising and Noise Suppression Methods	SG P2: Structural Styles: Lithosphere to Thin Section	INT P4: Fault Detection Methods
	3	GM P1: Interpretation	INT P2: Seismic Facies Classification	TI P1: Field Applications and Monitoring	SP P4: Interpolation, Reconstruction and Regularization	AP P1: Carbonate Reservoirs and Petroleum System Risk Analysis	RCM P4: Carbonates Reservoir Characterization
	4	AFR P1: Insights Exploring Petroleum Systems in Underexplored Regions	INT P3: Sedimentology and Geomorphology	TI P2: Computational Methods in Geoscience	DAS P2: Reservoir Monitoring	DAS P3: Near Surface	DAS P4: Modeling and Acquisition
	5	USC P1: Unconventional Plays and Applied Workflows	RCM P1: Depositional Architecture, Geobodies, and Facies Modeling	DAS P1: Machine Learning and Processing	SP P5: Velocity Model Building and Tomographic Updates	IPS P3: Induced and Passive Monitoring	AAS P2: Frequency Dependent Seismic Analysis
	6	USC P2: Canada and The Rockies	RCM P2: Artificial Intelligence, Machine Learning and Seismic Analytics	EM P1: Machine Learning Methods and Reservoir Surveillance	SP P6: Reverse Time Migration and Imaging Applications	LCS P1: Storage Characterization 1	AAS P3: Case Study
	7	AAS P1: Anisotropy	RCM P3: Integrated Reservoir Studies	EM P2: Electromagnetic New Technologies and Case Studies		LCS P2: Storage Characterization 2	AAS P4: Machine Learning and More

KEY TO THEME AREAS

AAS:..... Anisotropy, AVO, and Seismic Inversion
 ACQ:..... Acquisition
 AFR:..... Africa
 AP:..... Asia Pacific
 BH:..... Borehole
 CAEV:..... Carbonates and Evaporites
 DAS:..... Distributed Acoustic Sensing
 DMLA:..... Digitalization, Machine Learning/ Artificial Intelligence, and Analytics

EEM:..... Europe and Eastern Mediterranean
 EM:..... Electromagnetics
 FWI:..... Full-Waveform Inversion
 GEFE:..... Geoscience Education and Field Experience
 GM:..... Gravity and Magnetics
 INT:..... Geologic and Geophysical Interpretation
 IPS:..... Induced and Passive Seismic
 LAC:..... Latin America and the Caribbean

LCS:..... Low Carbon Solutions
 MECA:..... Middle East and Central Asia
 MME:..... Mining and Mineral Exploration
 NS:..... Near Surface
 NSF:..... New Subsurface Frontiers
 Geological Hydrogen and Geothermal
 PS:..... Petroleum Systems
 RCM:..... Reservoir Characterization and Modeling
 RP:..... Rock Physics

19 August		Thursday, 20 August		
1:20 p.m.–3:00 p.m.	3:40 p.m.–5:20 p.m.	10:20 a.m.–12:00 p.m.	10:20 a.m.–12:00 p.m.	1:20 p.m.–3:00 p.m.
DMLA P8: Seismic Processing 2	DMLA P9: Novel Concepts for Seismic Interpretation		NS P4: Seismic Applications	
RP P1: New Developments	DMLA P10: Seismic Interpretation 2		NS P5: Hydrogeophysics	
RP P2: Measurement and Modeling	NSF P1: Geological Hydrogen		FWI P7: Land	
RP P3: Applications	NSF P2: Geothermal		FWI P8: Elastic and Imaging	
SP P7: Emerging Technologies: Signal Enhancement, Wavefield Separation, and S-DAS	FWI P6: Distributed Acoustic Sensing and Near Surface		FWI P9: Multiparameter and Extended Physics	
SP P8: Near Surface Processing	SP P9: Signal Processing, Quality Control and Field Workflows		FWI P10: Marine Case Studies	
FWI P5: Objective Functions and Regularization	SP P10: Multiple Attenuation, Consistency and Operational Corrections			

19 August		Thursday, 20 August		
1:20 p.m.–3:00 p.m.	3:40 p.m.–5:20 p.m.	8:00 a.m.–9:40 a.m.	10:20 a.m.–12:00 p.m.	
MME P1: Advance Modeling for Mineral Exploration	LAC P2: Latin America Offshore	TL P3: Novel Time Lapse and Carbon Capture, Utilization, and Storage	SMT P3: Modeling and Imaging in Viscous Media	
INT P5: Fractures and Reservoir Geology	LAC P3: Mexico, Venezuela, and Andean	LCS P3: Carbon Capture and Storage	SMT P4: Frequency Domain Modeling and Other Methods	
INT P6: Geohazards and Energy Transition	ACQ P1: Marine and Ocean Bottom Nodes	LCS P4: Advances in Monitoring Technology	MECA P1: Seismic Insights Across Regional Basins	
INT P7: Interpretation Machine Learning	ACQ P2: Land Seismic Methods	BH P1: Imaging and Petrophysical Interpretation	LCS P5: Storage Modeling Studies	
INT P8: Emerging Methods	ACQ P3: Acquisition Modeling and Optimization	AAS P5: Amplitude Versus Offset	DMLA P12: Agentic Artificial Intelligence and Foundation Models	
STUD P6: New Methods, and New Insights	ACQ P4: Land Hardware	DMLA P11: Digital Fieldwork and Artificial Intelligence-Enabled Rock Characterization	DMLA P13: Advanced Artificial Intelligence Methods for Digital Rock Physics and Imaging	
NS P3: Innovations in Near Surface Imaging	ACQ P5: Case Study			

RUBD Risk, Uncertainty, and Business Decisions
 SG Structure and Geomechanics
 SILIC Siliciclastic
 SMT Seismic Modeling and Theory
 SP Seismic Processing
 SS Special Sessions
 STUD Student Research (AAPG, SEG, and SEPM)
 SUS Sustainability Energy Development and Environmental Geoscience
 TI Technology Innovation
 TL Time Lapse
 USC United States and Canada

Color Key:

Integrated
Geophysics
Geology
Regions
Special Sessions

Schedule at a Glance

Saturday, 15 August

12:00 p.m.–5:00 p.m. Satellite Registration
(Marriott Marquis Hotel)

Sunday, 16 August

8:00 a.m.–5:00 p.m. Registration
8:00 a.m.–5:00 p.m. Satellite Registration
(Marriott Marquis Hotel)
8:00 a.m.–5:00 p.m. Preconvention Short Courses
8:00 a.m.–6:00 p.m. Preconvention Field Trips
10:00 a.m.–6:00 p.m. SEG/Chevron Student Leadership
Symposium (SLS) - Day 1

Monday, 17 August

7:30 a.m.–7:00 p.m. Registration
8:00 a.m.–5:00 p.m. Preconvention Short Courses
8:00 a.m.–5:00 p.m. Satellite Registration (Marriott Marquis
Hotel)
8:00 a.m.–4:00 p.m. SEG/Chevron Student Leadership
Symposium (SLS) - Day 2
9:00 a.m.–11:00 a.m. SEG Council Meeting and Presidential
Address
1:00 p.m.–4:30 p.m. From Bedrock to Bottle: Geology
in the Glass
1:00 p.m.–2:30 p.m. *The Leading Edge* Editorial Board Meeting
2:30 p.m.–4:00 p.m. Women's Network Panel
4:30 p.m.–5:30 p.m. Opening Session
5:30 p.m.–7:30 p.m. Exhibition and Icebreaker Reception
6:30 p.m.–8:00 p.m. Early Career Networking Reception

Tuesday, 18 August

7:00 a.m.–5:30 p.m. Registration
7:00 a.m.–1:00 p.m. Satellite Registration
(Marriott Marquis Hotel)
8:00 a.m.–12:00 p.m. Oral and Poster Sessions
8:00 a.m.–10:00 am. SEG Challenge Bowl World Finals
9:00 a.m.–6:00 p.m. Exhibition
9:00 a.m.–6:00 p.m. Pavilion Theatre Presentations
9:00 a.m.–12:00 p.m. Geothermal HUB Presentations
9:30 a.m.–10:30 am. Refreshment Break
10:00 a.m.–11:30 a.m. SEG Technical Standards Committee
Meeting
11:30 a.m.–1:15 p.m. All-Convention Luncheon
11:30 a.m.–1:00 p.m. SEG Foundation Donor Luncheon (by
invitation only)
12:00 p.m.–1:00 p.m. SEG Near-Surface Geophysics Technical
Section Business Meeting
1:20 p.m.–5:20 p.m. Oral and Poster Sessions
2:00 p.m.–5:00 p.m. New Technology Showcase
3:00 p.m.–4:00 p.m. Refreshment Break
3:00 p.m.–5:00 p.m. Early Career Speed Mentoring
5:00 p.m.–6:00 p.m. End-of-Day Reception
5:00 p.m.–6:00 p.m. SEG Geoscientists without Borders
Reception
5:00 p.m.–6:00p.m. SEG Gravity and Magnetism Committee
Meeting
5:30 p.m.–6:30 p.m. SEG Passive Seismic Committee Meeting
6:30 p.m.–7:30 p.m. AAPG Honors & Awards Ceremony
6:30 p.m.–7:30 p.m. SEG Honors & Awards Ceremony
7:00 p.m.–10:00 p.m. SEG Near-Surface Geophysics Technical
Section Reception
7:00 p.m.–10:00 p.m. SEPM Research Group Meetings
7:30 p.m.–9:00 p.m. AAPG/SEG Presidents' Reception
(by invitation only)

All events take place at the George R. Brown Convention Center and/or the Marriott Marquis Houston unless otherwise noted.



REGISTER EARLY TO SAVE!

Tier One Deadline is 7 July

Wednesday, 19 August

7:30 a.m.–6:00 p.m.	Registration
8:00 a.m.–12:00 p.m.	Oral and Poster Sessions
8:00 a.m.–9:00 a.m.	ICEG Meeting
8:00 a.m.–5:00 p.m.	SEG EVOLVE Carbon Solutions & Energy Exploration
8:30 a.m.–10:00 a.m.	AAPG Foundation Forum
9:00 a.m.–6:00 p.m.	Exhibition
9:00 a.m.–6:00 p.m.	Pavilion Theatre Presentations
9:00 a.m.–12:00 p.m.	Geothermal HUB Presentations
9:30 a.m.–10:30 a.m.	Refreshment Break
10:00 a.m.–2:00 p.m.	CAN (Career Advancement Network) Hiring Event
11:30 a.m.–1:00 p.m.	AAPG Division of Professional Affairs (DPA) Luncheon
11:30 a.m.–1:00 p.m.	Women's Network Luncheon
11:30 a.m.–1:00 p.m.	SEG Gravity and Magnetics Luncheon
12:00 p.m.–1:00 p.m.	SEG Near-Surface Hydrogeophysics Meeting
1:20 p.m.–5:20 p.m.	Oral and Poster Sessions
1:20 p.m.–5:20 p.m.	Discovery Thinking Forum
2:00 p.m.–5:00 p.m.	New Technology Showcase
3:00 p.m.–4:00 p.m.	Refreshment Break
5:00 p.m.–6:00 p.m.	End-of-Day Reception
5:25 p.m.–6:15 p.m.	Michel T. Halbouty Lecture
5:30 p.m.–7:30 p.m.	Alumni Receptions
6:30 p.m.–9:00 p.m.	AAPG Foundation Chairman's Reception (by invitation only)
6:30 p.m.–7:30 p.m.	AGU-SEG Collaboration Committee Meeting
7:00 p.m.–8:30 p.m.	AAPG/SEG Latin America and Caribbean Reception

Thursday, 20 August

7:00 a.m.–9:00 a.m.	Women's Networking Breakfast at Phoenicia Market
7:30 a.m.–2:30 p.m.	Registration
8:00 a.m.–12:00 p.m.	Oral and Poster Sessions
8:00 a.m.–3:00 p.m.	SEG Applied Sciences Educational Program (ASEP)
9:00 a.m.–3:00 p.m.	Exhibition
9:00 a.m.–3:00 p.m.	Pavilion Theatre Presentations
9:00 a.m.–12:00 p.m.	Geothermal HUB Presentations
9:30 a.m.–10:30 a.m.	Refreshment Break
11:30 a.m.–1:00 p.m.	SEG Development and Production Luncheon
11:30 a.m.–1:00 p.m.	AAPG Division of Environmental Geosciences (DEG) and AAPG Energy and Minerals Division (EMD) Luncheon
11:30 a.m.–1:00 p.m.	SEG Mining and Mineral Exploration Luncheon
1:20 p.m.–4:50 p.m.	Oral and Poster Sessions
4:30 p.m.–5:30 p.m.	SEG Mining and Mineral Exploration Committee Meeting
4:30 p.m.–5:30 p.m.	SEG CO ₂ Research Sub-Committee Meeting
5:30 p.m.–6:30 p.m.	SEG Development and Production Committee Meeting
5:30 p.m.–7:30 p.m.	SEG Research Committee Meeting

Friday, 21 August

8:00 a.m.–5:00 p.m.	Postconvention Field Trip
8:30 a.m.–5:00 p.m.	Postconvention Workshops

FOLLOW IMAGE ON SOCIAL MEDIA:



Opening Session

Topic: Exploration: Shortening the Cycle from Idea to Production
Date: Monday, 17 August
Time: 4:30 p.m.–5:30 p.m.
Location: George R. Brown Convention Center
Fee: Included with registration

Currently, industry takes close to 15 years on average to generate an idea, acquire the acreage, drill the discovery well and then put it into production. The later stage is responsible for a growing problem of the gap between technical success and commercial success. Going from resource collector to resource converter is one of the biggest opportunities to increase reserves and revenues. It has begun to separate the “breakaway” companies and the average ones. In looking at the steps in the exploration cycle where are the best opportunities to compress the timelines? What role will partnerships play?

Note: Please check website for updates on the panelists.

All-Convention Luncheon

Topic: CEO Spotlight Dialogue
Speaker: Kristian Johansen, Chief Executive Officer, TGS
Moderator: Bob Fryklund, Chief Upstream Strategist, S&P Global Energy
Date: Tuesday, 18 August
Location: George R. Brown Convention Center
Time: 11:30 a.m.–1:15 p.m.
Fee: \$85



Kristian Johansen
Chief Executive
Officer, TGS

Kristian has served as the Chief Executive Officer of TGS since March 2016. He joined TGS in 2010 as the Chief Financial Officer before becoming the Chief Operating Officer in early 2015. Kristian has almost 20 years of C-level experience for public companies in the construction, technology, and energy industries. Mr. Johansen also has professional experience from board positions of several public companies in Europe and the U.S., and industry associations such as the National Ocean Industries Association (NOIA) and EnerGeo Alliance (former IAGC). Currently, he is a non-executive director of two U.S. public companies, Valaris and International Seaways. Mr. Johansen earned his undergraduate and master’s degrees in business administration from the University of New Mexico in 1998 and 1999.

Honors and Awards Ceremonies

SEG Honors and Awards Ceremony

Date: Tuesday, 18 August
Time: 6:30 p.m.–7:30 p.m.

One of the most important functions of a professional society is honoring those that have made significant contributions to the profession and science. You are invited to attend the SEG Honors and Awards Ceremony to celebrate the outstanding individuals that have worked hard to advance our science and benefitted our Society.

AAPG Honors and Awards Ceremony

Date: Tuesday, 18 August
Time: 6:30 p.m.–7:30 p.m.

You are cordially invited to attend the Honors and Awards program of AAPG, which provides a means for recognizing outstanding achievements and contributions by professional geologists and by other professionals who further the goals and objectives of our science, profession, and Association.

Special Features

Discovery Thinking Forum

Topic: **Analog of Perseverance**
Speakers: Multiple speakers presenting
Chairs: Charles Sternbach and Mike Forrest
Date: Wednesday, 19 August
Time: 1:20 p.m.–5:20 p.m.
Location: George R. Brown Convention Center, Room 351A
Fee: Included with registration

The Discovery Thinking Forum returns as one of IMAGE's most anticipated sessions—bringing together powerful case studies, personal insights, and the real stories behind major discoveries.

Led by chairs Charles Sternbach and Mike Forrest, this year's theme, "Analog of Perseverance," highlights four exceptional discovery journeys. Through a blend of technical depth and personal perspective, speakers will share how integrated geology and geophysics—combined with persistence, creativity, and decision-making—turn prospects into successful outcomes.

Where Experience Meets Insight

More than a technical session, Discovery Thinking bridges the gap between theory and practice. Attendees will gain:

- Real-world perspectives on overcoming technical and business challenges
- Insights into the "art of exploration" from seasoned professionals
- Lessons that serve as powerful analogs for the next generation of geoscientists

As industry evolves, these stories remain essential, offering both inspiration and practical guidance for navigating uncertainty and driving discovery forward.

"To discover, act like a discoverer."

— Jack Oliver

The 2026 "Discovery Thinking" Forum will mark the thirty first presentation of the AAPG Discovery Thinking initiative. We emphasize exemplary case studies and how integrated geology and geophysics find and develop significant discoveries. Building on our nineteen-year tradition of 100+ discoveries, this Discovery Thinking Forum will feature four extraordinary discovery presentations.

Speakers will discuss the philosophy of exploration, stories from remarkable careers, professional insights, colorful anecdotes, and lessons on the path to success.



The Brookian Topset Play of the North Slope of Alaska: The Hottest Conventional Oil Play in the World

Speaker: William Armstrong
Armstrong Oil & Gas, Inc.



From Mamba to Zohr to Baleine to Geng North Discoveries: Analysing Twenty Years of Continued Exploration Success at Eni

Speaker: Andrea Cozzi
Eni



Highlander — Confirmation of a Giant Gas Field in South Louisiana

Speaker: Kevin McMichael
Claymore Oil & Gas LP



Missed It by That Much: A Northern Gulf of Mexico — America Look at Near Misses that Became Discoveries and the Impact for Future Exploration

Speaker: Eric Zimmermann
LLOG Exploration

Women's Network Executive Panel

Title: High-Impact Technical Leadership:
Executive Decision-Making in Complex Energy Environments

Date: Monday, 17 August

Time: 2:30 p.m.–4:00 p.m.

Location: George R. Brown Convention Center

Fee: Included with registration

The energy and technology sectors are navigating an era of unprecedented uncertainty, accelerated innovation, and evolving sustainability expectations. While technical expertise remains foundational, it is executive decision-making – the ability to translate complex ideas into high-impact organizational action – that ultimately drives performance, resilience, and long-term impact.

This session emphasizes the strategic capabilities required to lead in multidisciplinary, technology-driven organizations across the energy transition, decarbonization initiatives, and broader innovation-driven contexts. It aligns with IMAGE's motto: "Connecting Ideas to Power the World," demonstrating how technical insight becomes executive action that shapes organizations, markets, and industry direction.

Session Overview:

A moderated executive panel with CEOs, senior executives, entrepreneurs, and academia leaders. The discussion will explore:

- How technical and operational insights inform high-stakes strategic decisions
- Decision-making under uncertainty and complex data environments
- Aligning innovation, sustainability, and long-term organizational strategy
- Developing the next generation of high-impact technical leaders
- Audience interaction will be included to ensure practical takeaways



Michel T. Halbouty Lecture

Speaker: Kirsten Siebach, Associate Professor, Rice University
Date: Wednesday, 19 August
Time: 5:25 p.m.–6:15 p.m.
Location: George R. Brown Convention Center
Fee: Included with registration



Kirsten Siebach
Associate Professor
Rice University

The Michel T. Halbouty lecture series—funded by the AAPG Foundation—is an ongoing special event. Lecture topics are designed to focus either on wildcat exploration in any part of the world where major discoveries might contribute significantly to petroleum reserves, or space exploration where astro geological knowledge would further mankind’s ability to develop resources on Earth and in the Solar System.

Please check the website for additional information.

CAN (Career Advancement Network) Hiring Event

Date: Wednesday, 19 August
Time: 10:00 a.m.–2:00 p.m.
Location: George R. Brown Convention Center
Fee: \$5 per person

Elevate your professional journey at IMAGE '26 by joining us for the Career Advancement Network (CAN) Hiring Event. This event connects experienced professionals with employers offering top talent for traditional roles in oil and gas and across the energy industry. For a nominal fee, you can upload your resume for advance review, receive expert volunteer support, and network your way into your next role. *Pre-registration is required.*

The Bureau of Economic Geology Core Exhibition Experience the Reservoir

Step beyond logs and seismic sections and get hands-on with the subsurface. This exclusive Core Exhibition, curated by the Bureau of Economic Geology at the University of Texas at Austin, offers a rare opportunity to examine real rock samples from a range of depositional environments.

Led by Carlos A. Uroza, with co-chairs Mariana I. Olariu and William Ambrose, the exhibition features cores from:

- **Fluvial systems** – Tuscaloosa Formation (Mississippi)
- **Deltaic and shoreface deposits** – Wilcox Group and Frio Formation (onshore Texas)
- **Slope systems** – Wilcox Group (offshore Texas)

From Observation to Application

More than a static display, the exhibition will host expert-led sessions during convention breaks—giving you the chance to engage directly with specialists and connect geological interpretation to real-world outcomes.

Whether your focus is exploration or carbon storage, this is a unique opportunity to sharpen your interpretative skills using some of the industry’s most representative cores.



Breakfast, Luncheons & Receptions

Afternoon Activity

Topic: From Bedrock to Bottle: Geology in the Glass
Speaker: Diana Khandilyan, Geophysicist, Glass Nomad
Date: Monday, 17 August
Time: 1:00 p.m.–4:30 p.m.
Fee: \$95

All-Convention Luncheon

Topic: CEO Spotlight Dialogue
Speaker: Kristian Johansen, Chief Executive Officer, TGS
Moderator: Bob Fryklund, Chief Upstream Strategist, S&P Global Energy
Date: Tuesday, 18 August
Time: 11:30 a.m.–1:15 p.m.
Fee: \$85

SEG Geoscientists *without Borders*® Reception

Date: Tuesday, 18 August
Time: 5:00 p.m.–6:00 p.m.
Fee: Included with registration

SEG Near-Surface Geophysics Technical Section Reception

Date: Tuesday, 18 August
Time: 7:00 p.m.–10:00 p.m.
Fee: Included with registration

SEG Gravity and Magnetism Luncheon

Topic: To Be Determined
Speaker: To Be Determined
Date: Wednesday, 19 August
Time: 11:30 a.m.–1:00 p.m.
Fee: \$80

AAPG Division of Professional Affairs (DPA) Luncheon

Topic: How AI is Reshaping Subsurface Energy Systems
Speakers: Brian Spector and Sahar Bakhshian, Rice University Professors
Date: Wednesday, 19 August
Time: 11:30 a.m.–1:00 p.m.
Fee: \$80

Women's Network Luncheon

Topic: "Unearthing" the History of Jezero Crater, Mars with Perseverance
Speaker: Eleanor (Ellie) Moreland, Ph.D. Candidate at Rice University
Date: Wednesday, 19 August
Time: 11:30 a.m.–1:00 p.m.
Fee: \$80 Professional / \$50 Student

AAPG/SEG Latin America and Caribbean Reception

Date: Wednesday, 19 August
Time: 7:00 p.m.–8:30 p.m.
Fee: Included with registration

Women's Network Breakfast

(Co-organizers: AWG LoneStar, SEG WN, AAPG WN)
Date: Thursday, 20 August
Time: 7:00 a.m.–9:00 a.m.
Location: Phoenicia Market
Fee: Advanced \$20 / Onsite \$25

SEG Development and Production Luncheon

Topic: To Be Determined
Speaker: To Be Determined
Date: Thursday, 20 August
Time: 11:30 a.m.–1:00 p.m.
Fee: \$80

AAPG Division of Environmental Geosciences (DEG) and Energy Minerals Division (EMD) Luncheon

Topic: Helium and Hydrogen - Exploring the New Frontier
Speaker: Steven Tedesco, President, Running Foxes
Date: Thursday, 20 August
Time: 11:30 a.m.–1:00 p.m.
Fee: \$80

SEG Mining and Mineral Exploration Luncheon

Topic: To Be Determined
Speaker: Bryony Richards, Senior Research Scientist at the Energy & Geoscience Institute
Date: Thursday, 20 August
Time: 11:30 a.m.–1:00 p.m.
Fee: \$80



Luncheons



Students Teaching Students

Build the future of geoscience from the ground up. Through the **SEG K-12 Outreach Campaign**, university students bring hands-on STEM directly to local classrooms. Join us in strengthening the global workforce—one student at a time.

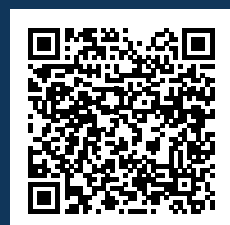
Direct Impact. Tangible Results.

Choose to support a specific university, region, or the global fund. Every dollar contributes to meaningful, measurable programming:

- **\$50:** Materials & hands-on demos
- **\$100:** Transportation & event costs
- **\$500:** Full geoscience activities
- **\$1,000:** Funds one complete outreach initiative

Develop leaders. Give with transparency. Invest in the future of SEG.

Give back through our SEG Student Chapters—support your university where an active student chapter exists.



University of Houston SEG Student Chapter President Johanna Villagomez working with Houston ISD high school students at the Bureau of Economic Geology.

The Hub of Innovation: Specialized Pavilions

This is where ideas move into action. Engage directly with thought leaders, government representatives, and technology pioneers who are redefining the exploration and production lifecycle. Whether you're exploring Agentic AI, advancing carbon management strategies, or identifying global investment opportunities, these curated spaces are designed to spark meaningful conversations, foster collaboration, and accelerate progress across the industry.

As we continue to expand and evolve these pavilions, we invite industry leaders, innovators, and organizations to get involved—through speaking opportunities, panel participation, and sponsorship—to help shape the conversations driving the future of energy.

Digital Pavilion: Where Data, AI, and Geoscience Converge

Digital innovation is reshaping the future of geoscience—and this is where it comes to life.

At the Digital Pavilion, explore how Agentic AI, high-performance computing, and next-generation interpretation workflows are transforming the way we discover, analyze, and produce energy resources. Through three days of expert-led panels and talks, you'll gain practical insight into how digital tools are accelerating decision-making, improving accuracy, and unlocking new efficiencies across the exploration and production lifecycle.

From seismic processing to production optimization, discover how intelligent systems and specialized AI agents are redefining what's possible.



Near-Surface Geophysics Pavilion: Applied Geophysics: Quantifying the Shallow Subsurface

Positioned at the front of the exhibition hall, the Near-Surface Geophysics Pavilion is a dynamic hub for applied science and emerging talent.

This pavilion features technical panels spanning engineering and environmental geophysics, student-focused sessions, and industry presentations, offering a comprehensive look at near-surface applications in today's evolving energy landscape.

The pavilion continues to expand its programming and engagement opportunities. Be sure to check the latest schedule for new sessions and activities.



The IMAGE '26 exhibit hall is more than a marketplace—it is a high-energy nexus where the industry's most pressing challenges meet actionable solutions. While the technical program delivers the theory, our dynamic pavilions bring it to life—offering immersive, real-world perspectives on the technologies, workflows, and innovations transforming geoscience and the broader energy landscape.

Carbon Management Pavilion: Advancing Scalable Solutions for a Lower-Carbon Future

As energy transition accelerates, geoscience is at the center of scalable carbon solutions.

The Carbon Management Pavilion brings together experts, technologies, and real-world applications driving progress in CO₂ sequestration, geothermal energy, hydrogen systems, and subsurface storage. Explore how integrated workflows and advanced tools are enabling more efficient, data-driven approaches to managing Earth's resources.

Whether you're focused on decarbonization strategies or emerging energy systems, this pavilion highlights the innovation shaping a more sustainable future.

Carbon Management



Global Energy Opportunities Pavilion: Connecting Global Investment with Energy Innovation

Discover where the world is investing next.

The Global Energy Opportunities (GEO) Pavilion offers a unique, global perspective on energy development, bringing together national oil companies, government agencies, and international stakeholders to showcase investment opportunities and strategic initiatives.

Anchored by the AAPG International Pavilion, GEO provides direct access to insights on oil and gas, geothermal, critical minerals, hydrogen, and renewable energy projects—alongside the policies and partnerships driving a lower-carbon future.

Global Energy Opportunities



New Technology Showcase

Tuesday

From Pilot to Profit: Navigating the Tech Adoption Gauntlet

2:00 p.m.–2:30 p.m.

Join this team of high-impact panel of technology scouts, early adopters, and incubator experts to dissect the DNA of a successful subsurface innovation. Moving beyond the hype, our panelists will share real world experiences, highlighting the critical ingredients that separate scalable solutions from forgotten prototypes. Whether you are developing, field-testing, or marketing new tools, you will gain essential insights into the most common pitfalls to avoid during the redesign and deployment phases.

The Edge of Innovation: The Women Driving Energy Tech's Next Wave

2:30 p.m.–3:00 p.m.

Moving beyond the traditional DEI narrative to discuss the tangible business advantages of diverse leadership, this panel of innovative women leaders focuses on how collaborative team-building and strategic alliance-forging can accelerate the pace of innovation. From navigating the technical hurdles of subsurface engineering to fostering unconventional partnerships across the energy value chain, these experts will share how their distinct approaches to communication and risk-sharing lead to more resilient technologies and faster commercial adoption.

New Technology Pitches

3:00 p.m.–5:00 p.m.



Wednesday

The Pilot Bridge: Strategic Onramps to Commercial Adoption

2:30 p.m.–3:00 p.m.

This session tackles the two most critical transitions in the technology lifecycle: securing the initial “yes” and bridging the gap to long-term usage. Our panel will discuss how to identify the right internal champions—beyond just the technical scouts—who have the operational mandate to greenlight proof-of-concept (POC) trials. Join us to learn how to align your innovation with the operational realities and strategic priorities that drive sustained industry adoption.

Foundation First: Building the Data Architecture That Actually Powers AI

2:30 p.m.–3:00 p.m.

Moving beyond the traditional DEI narrative to discuss the tangible business advantages of diverse leadership, this panel of innovative women leaders focuses on how collaborative team-building and strategic alliance-forging can accelerate the pace of innovation. From navigating the technical hurdles of subsurface engineering to fostering unconventional partnerships across the energy value chain, these experts will share how their distinct approaches to communication and risk-sharing lead to more resilient technologies and faster commercial adoption.

New Technology Pitches

3:00 p.m.–5:00 p.m.



Geothermal Hub: Powering the Future from Below the Surface

Geothermal energy is gaining momentum—and geoscience is at the core of its advancement.

The Geothermal Hub brings together professionals across the spectrum, from those newly exploring geothermal to experts driving innovation in the field. Through a mix of technical presentations, panel discussions, and real-world case studies, the Hub highlights the expanding role of geothermal energy in today's evolving energy mix.

Explore the full project lifecycle—from exploration and resource characterization to drilling, development, and operations—while gaining insight into the technologies and workflows enabling progress. Sessions will also examine the growing synergy between oil and gas and geothermal, addressing shared challenges such as high-temperature drilling, well construction, and subsurface performance.

Whether you're looking to deepen your technical expertise or identify new opportunities, the Geothermal Hub offers a collaborative space to exchange ideas, discover innovations, and connect with leaders shaping the future of geothermal energy.

Geothermal Hub



Inside IMAGE Podcast



Hosted by Andrew Geary

Visit Society Central on the Exhibit Floor to join us for live tapings of Inside IMAGE, a special podcast series presented by Seismic Soundoff. Hear candid conversations with industry leaders and innovators as they dive into the science, people, and stories behind IMAGE. Don't miss this unique behind-the-scenes perspective on geoscience's most dynamic event, which can be found at imageevent.org/podcast.

Gathering Place

Relax and recharge with friends and colleagues at the **IMAGE Gathering Place**.

Conveniently located in the exhibition hall, this dedicated space offers the perfect balance of serenity and opportunity. Whether you are looking for a quiet moment to decompress between sessions or an informal setting to spark meaningful conversations, the Gathering Place is designed for you. It is more than just a break; it is an ideal hub to foster new connections, catch up with industry peers, or engage in casual networking with exhibitors. Step away from the bustle, grab a seat, and let the ideas flow in this welcoming, vibrant environment.



Student Events

Sunday, 16 August

SEG/Chevron Student Leadership Symposium (SLS) Day 1
(By invitation only)
10:00 a.m.–5:00 p.m.

Monday, 17 August

SEG/Chevron Student Leadership Symposium (SLS) Day 2
(By invitation only)
8:00 a.m.–3:30 p.m.

Early Career Networking Reception
(By invitation only)
6:30 p.m.–8:00 p.m.

Tuesday, 18 August

SEG Challenge Bowl World Finals
8:00 a.m.–10:00 a.m.

Early Career Speed Mentoring
3:00 p.m.–5:00 p.m.

Wednesday, 19 August

SEG EVOLVE
8:00 a.m.–5:00 p.m.

***SEG Field Camps - To Be Determined**

Bookstore

IMAGE Bookstore

Explore. Discover. Connect.



Browse the latest publications, best-sellers, and discounted titles from SEG and AAPG at the IMAGE Bookstore, located in Society Central in the Exhibition Hall.

Meet the minds behind the work—select authors and editors will be on-site for book signings throughout the event. For the latest schedule and updates, download the IMAGE app.

SEPM Activities at IMAGE

SEPM Research Group Meetings

SEPM Carbonate Research Group	Tuesday, 7:00 p.m.–10:00 p.m.
SEPM Clastic Diagenesis Research Group	Tuesday, 7:00 p.m.–10:00 p.m.
SEPM Micropaleontology Research Group	Tuesday, 7:00 p.m.–10:00 p.m.
SEPM Deep Water Deposition Research Group	Tuesday, 7:00 p.m.–10:00 p.m.

SEPM Field Trip and Short Courses

Be sure to check out the trip and courses offered for this convention. Students should know that there are limited discounted student seats in each course.

Visit SEPM.org for updates

Short Courses

IMAGE '26 short courses bridge the gap between traditional geosciences and emerging energy technologies. Covering critical industry topics, these sessions provide the specialized training students and seasoned professionals need to stay ahead.



SC #	TITLE	INSTRUCTOR(S)	DATES TIME	FEES
SC-01	Unconventional Reservoir Engineering for Geoscientists (AAPG)	Yogashri Pradhan, IronLady Energy Advisors	Sunday, 16 August 8:00 a.m.–4:00 p.m.	\$575 Professional \$200 Student
SC-02	Using All Your Data: Integration of Geology and Geophysics (SEG DISC)	Maisha Amaru, Chevron	Sunday, 16 August 8:00 a.m.–5:00 p.m.	\$325 Member \$455 Nonmember \$80 Student
SC-03	Theory and Practice of Large Language Models for the Geoscientist (SEG)	Gerard T. Schuster, University of Utah	Sunday, 16 August 8:00 a.m.–5:00 p.m.	\$500 Member \$650 Nonmember \$200 Student
SC-04	Probabilistic Deep Learning Inversion for Critical Mineral Exploration (SEG)	Jiajia Sun, University of Houston	Sunday, 16 August– Monday, 17 August 8:00 a.m.–5:00 p.m.	\$975 Member \$1300 Nonmember \$300 Student
SC-05	Converted Waves for Land and OBN Data: Prestack Imaging and Joint Inversion (SEG)	James Gaiser, Gaiser Geophysical Consulting	Sunday, 16 August– Monday, 17 August 8:00 a.m.–5:00 p.m.	\$975 Member \$1300 Nonmember \$300 Student
SC-06	Sequence Stratigraphy: Concepts, Workflows, and Applications (SEPM)	Vitor Abreu, Consultant; Rene Jonk, Consultant	Sunday, 16 August– Monday, 17 August 8:30 a.m.–4:00 p.m.	\$600 Professional \$230 Student
SC-07	Effective Joint Venture Influencing: A Strategic Approach (AAPG Women's Network)	Amalia Olivera-Riley, Subsurface Consultants & Associates	Monday, 17 August 8:00 a.m.–3:30 p.m.	\$300 Professional \$25 Student
SC-08	Exploration and Development Aspects of Geothermal Energy (AAPG EMD)	Nicole Wagoner, University of Nevada, Reno; Benjamin Burke, Gradient Geothermal; Shanna Chu, Fervo Energy; Emilie Gentry, XGS Energy; Kevin McCarthy, Baker Hughes	Monday, 17 August 8:00 a.m.–4:00 p.m.	\$575 Professional \$200 Student
SC-09	Mastering AI at Work (AAPG)	Yogashri Pradhan, IronLady Energy Advisors	Monday, 17 August 8:00 a.m.–5:00 p.m.	\$575 Professional \$200 Student
SC-10	Fundamentals of Seismic Attributes and Attribute-Driven Machine Learning for Seismic Interpretation (SEG)	David Lubo-Robles and Kurt Marfurt, University of Oklahoma	Monday, 17 August 8:00 a.m.–5:00 p.m.	\$500 Member \$650 Nonmember \$200 Student
SC-11	Full-Waveform Inversion in Practice: Black Box or Pandora's Box? (SEG)	Laurence Letki, DUG Technology	Monday, 17 August 8:00 a.m.–5:00 p.m.	\$500 Member \$650 Nonmember \$200 Student
SC-12	Economic Analysis and Decision Modeling (SEG)	Kamal Malick, Anschutz Exploration Corporation	Monday, 17 August 8:30 a.m.–4:00 p.m.	\$400 Member \$450 Nonmember \$150 Student
SC-13	Advances in Geothermal Energy: Subsurface Processes, Reservoir Dynamics & Power, and Heat Delivery (AAPG)	Shuvajit Bhattacharya, The University of Texas at Austin	Monday, 17 August 8:30 a.m.–5:00 p.m.	\$575 Professional \$200 Student
SC-14	Seismic Stratigraphy and Geomorphology for Graduate Students (SEPM)	Kenn Ehman, Selen Esmeray-Senlet, Andrea Lisi, Shann Khan, and Chad Holmes, Chevron	Monday, 17 August 8:30 a.m.–5:00 p.m.	\$50 Students Only to be held at SLB Training Center, 10001 Richmond Ave., Houston
SC-15	Valuing Natural Resources (AAPG)	Jonathan Rotzien, Basin Dynamics; Susan Howes, Subsurface Consultants & Associates	Monday, 17 August 9:00 a.m.–4:00 p.m.	\$575 Professional \$200 Student

Note: If you wish to participate in a short course, it is highly recommended that you register for IMAGE and sign up for a course by 8 July. Short courses are subject to cancelation if undersubscribed. Please confirm that the course will take place before purchasing non-refundable airline tickets.

Workshops at IMAGE

Cap off a productive week at IMAGE by attending one (or more!) of the 18 Postconvention Workshops, all happening Friday, 21 August. These workshops cover a wide range of timely and technical topics designed to deepen your expertise.

Pricing:

- \$155 – SEG/AAPG Members
- \$275 – Nonmembers
- \$55 – Student Members
- \$75 – Student Nonmembers



Registration includes access to any or all workshops, space permitting.

W #	Workshop Title	Time
W-1	4D FWI for Reservoir Monitoring	8:30 a.m.–12:00 p.m.
W-2	Agentic AI and Large Language Models (LLMs) in Geophysical Applications	8:30 a.m.–12:00 p.m.
W-3	AI Applied to Mining Geophysics	8:30 a.m.–12:00 p.m.
W-4	Applying Lessons Learned from Oil & Gas Geophysics to Energy Transition Challenges	8:30 a.m.–5:00 p.m.
W-5	Automated Mineral Classification: Transforming Mineralogy into Operational Intelligence	8:30 a.m.–12:00 p.m.
W-6	Autonomous Energy Geoscience: Digital Twins, Physics-Informed AI, and Intelligent Automation	1:30 p.m.–5:00 p.m.
W-7	Combined Active and Passive Seismic Monitoring of Subsurface Processes	8:30 a.m.–12:00 p.m.
W-8	Critical Minerals and Rare Earth Elements (REEs): Technologies and other Considerations	1:30 p.m.–5:00 p.m.
W-9	Elastic Multi-parameter FWI: Where are we?	8:30 a.m.–12:00 p.m.
W-10	FWI Hackathon Showcase	1:30 p.m.–5:00 p.m.
W-11	Geophysical Models of Magmatic and Amagmatic Rifted Continental Margins	8:30 a.m.–5:00 p.m.
W-12	Key Business and Technology Enablers and Barriers of the Geothermal Industry in 2026	8:30 a.m.–12:00 p.m.
W-13	Low-Cost Monitoring for Oil and Gas Production and Emerging Energies	1:30 p.m.–5:00 p.m.
W-14	Optical Fibers: What is next? Acquisition, Data, and Products	1:30 p.m.–5:00 p.m.
W-15	Seismic Signal Processing in the AI Era: Integration or Replacement?	8:30 a.m.–12:00 p.m.
W-16	Subsurface Integration: What's Working, What's Missing, and What Can We Change?	1:30 p.m.–5:00 p.m.
W-17	Surface to Subsurface: Drone-Enabled Analog Studies for Reservoir Characterization	1:30 p.m.–5:00 p.m.
W-18	The Role of Seismic Gathers in the Era of FWI	1:30 p.m.–5:00 p.m.

Field Trips

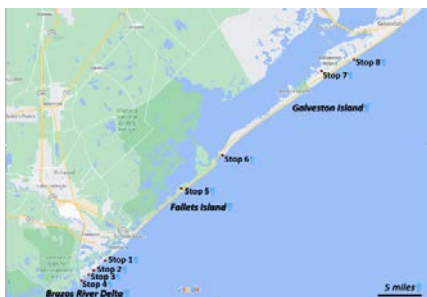
Learn in an experiential way by participating in one of the IMAGE '26 field trips. Whether it be a study of coastal processes or participating in a hands-on GWB project, you are sure to make life-long connections while you gain new knowledge. To ensure you can maximize your schedule, we have designed these offerings for your total convenience:

- **Before the Convention:** Join us for FT-01 or FT-02 to kick off your IMAGE experience.
- **After the Convention:** Extend your trip and gain further insights by participating in FT-03.

FT #	Title	Leader(s)	Date / Time	Fees
FT-01	Texas Coastal Processes – Brazos River Delta to Galveston Island (SEPM)	Dr. Erik Scott (Rice University and Vecta Oil & Gas)	Sunday, 16 August 8:00 a.m.–6:00 p.m.	Professional: \$350 Student: \$75 (limited)
FT-02	Building Coastal Resilience and Habitat Stability in Matagorda Peninsula–A Geoscientists <i>without</i> Borders® Initiative (SEG/AAPG)	Brandee Carlson and Shuhab Khan (University of Houston)	Sunday, 16 August 8:00 a.m.–6:00 p.m.	Professional & Student: \$250
FT-03	From Grains to Models: Modern Texas Coast Analogs to Understand Sub Seismic Reservoir Heterogeneity (AAPG)	Dario Harazim (ExxonMobil), Julia Wellner (University of Houston), and Rob Wellner (ExxonMobil Low Carbon Solutions)	Friday, 21 August 8:00 a.m.–5:00 p.m.	Professional: \$150 Student: \$50 (limited)

Texas Coastal Processes – Brazos River Delta to Galveston Island (SEPM)

Sites ~60 miles south of Houston along ~35 miles of the SE Texas coastline provide excellent locations to observe coastal sedimentological processes and their resultant deposits. This section of the Texas coast is characterized by barrier islands separated by tidal inlets and river outlets. The larger, sand-ridge cored, prograding Galveston Island contrasts with the smaller, wash-over dominated, retreating Follets Island and is separated by the stable, long-lived San Luis Pass that exhibits well developed flood and ebb tide delta systems. The Brazos River empties into the Gulf of Mexico to the south of Follets Island and forms a wave-dominated delta system. The Brazos River Delta has undergone significant changes due to human intervention and demonstrates the dynamic nature of sediment movement and deposition along the coast. This section of the coast provides insight into the steady lower energy background processes of sediment movement and the higher energy short term events, and the resultant reservoir characteristics of clastic coastal deposits from these different mechanisms. The understanding gained from these modern systems can be applied as an analog for subsurface exploration and production along the Gulf Coast and elsewhere.



The larger, sand-ridge cored, prograding Galveston Island contrasts with the smaller, wash-over dominated, retreating Follets Island and is separated by the stable, long-lived San Luis Pass that exhibits well developed flood and ebb tide delta systems. The Brazos River empties into the Gulf of Mexico to the south of Follets Island and forms a wave-dominated delta system. The Brazos River Delta has undergone significant changes due to human intervention and demonstrates the dynamic nature of sediment movement and deposition along the coast. This section of the coast provides insight into the steady lower energy background processes of sediment movement and the higher energy short term events, and the resultant reservoir characteristics of clastic coastal deposits from these different mechanisms. The understanding gained from these modern systems can be applied as an analog for subsurface exploration and production along the Gulf Coast and elsewhere.

Building Resilient Coastal Communities at Matagorda Bay–A Geoscientists *without* Borders® Initiative (SEG/AAPG)

The Texas coast, with valuable recreational, industrial, and ecological resources, faces critical threats from land loss due to subsidence and erosion. Matagorda County, with 36,225 residents, has been heavily impacted by storms and rapid erosion (approx. 1 m/year on the ocean side).



Coastal erosion, especially on barrier islands like Matagorda, poses serious risks. Because these islands protect the mainland against hurricanes, storms, and sea level rise, focused research is needed to inform coastal resilience and habitat stability. Understanding sediment transport is essential for erosion mitigation; sediment lost offshore is often irretrievable, while accumulation in bays supports island nourishment and sustainable land growth. To aid in habitat management activities, the project is using near-surface geophysical methods—such as GEM-2 to carry out Electromagnetic (EM) surveys—and moored instruments for offshore explorations.

Coastal erosion, especially on barrier islands like Matagorda, poses serious risks. Because these islands protect the mainland against hurricanes, storms, and sea level rise, focused research is needed to inform coastal resilience and habitat stability. Understanding sediment transport is essential for erosion mitigation; sediment lost offshore is often irretrievable, while accumulation in bays supports island nourishment and sustainable land growth. To aid in habitat management activities, the project is using near-surface geophysical methods—such as GEM-2 to carry out Electromagnetic (EM) surveys—and moored instruments for offshore explorations.

From Grains to Models: Modern Texas Coast Analogs to Understand Sub Seismic Reservoir Heterogeneity (AAPG)

This field trip to the Upper Texas Coast will provide participants with practical tools for identifying and managing reservoir heterogeneity in deltaic, tidal, and shoreface barrier island systems, with a special emphasis on sub seismic-scale facies variability across a typical suite of coastal depositional environments. During this trip, we will traverse along the coast, stopping at key locations to discuss sedimentological processes, including sedimentary textures, associated with discrete depositional environments. We will relate observations from modern environments, such as grain-size distributions, sorting, and composition to porosity and permeability. This relationship will be supported by real-world examples from the subsurface. Furthermore, we will discuss several counterintuitive relationships between texture and reservoir quality across different depositional settings and how this may impact pre-drill predictions of reservoir performance.

Building on these observations, the program transitions to subsurface implications. Using compaction curve exercises and burial analogs, participants will explore how subtle textural variations within and between facies influence compaction behavior, porosity loss, and ultimately reservoir performance. A major component of the field trip focuses on translating observed ancient and modern reservoir heterogeneity into practical modeling decisions. By walking and sampling across facies boundaries, participants will estimate sand body dimensions, continuity, and lateral variability, and discuss how these insights inform variogram selection, anisotropy, and uncertainty quantification. The ability to visualize facies changes where seismic data cannot resolve rock fabric, one of the fundamental controls on reservoir quality and deliverability, is critical for accurately modeling fluid flow in the subsurface.

The field trip lessons are equally applicable to hydrocarbon exploration and production, as well as to the selection of suitable sites for carbon storage, enabling participants to transfer practical skills and insights across different subsurface challenges.



Important notes regarding field trips:

- Before purchasing non-refundable airline tickets, confirm that the trip will take place as trips may be cancelled if undersubscribed.
- Please register well before 8 July 2026. Field trip cancellation due to low enrollment will be considered at this time. No refunds will be allowed on field trips after this date.
- Field trips are limited in size and are reserved on a first-come, first-served basis and must be accompanied by full payment.
- If you do not plan on attending the convention, a U.S. \$35 enrollment fee will be added to the field trip fee. This fee may be applied toward registration if you decide to attend the convention at a later date.
- A wait list is automatically created if a field trip sells out. The IMAGE registration team will notify you if space becomes available.
- Registrations will continue to be processed for field trips that are not cancelled up until they are sold out or closed.
- Prior to the field trip you will receive an itinerary with details of meeting points, transportation with the trip phone numbers, email addresses of trip leaders, etc.
- Proper clothing and supplies are needed for the outdoors (hat, windbreaker, sturdy footwear, and backpack).
- Depending on location, temperatures can range from 40 to 70 degrees Fahrenheit with or without rain. Participants are advised to check local weather forecasts for the latest updates.
- Insect repellent and sun protection (sunscreen and hats) are recommended.
- IMAGE, the sponsoring organizations, field trip leaders, and their employers do not maintain insurance covering illness or injury for individuals.



See full descriptions and field trip details at IMAGEevent.org/program/field-trips.

Registration Details

Register by 7 July and save!

Join AAPG or SEG and save more!

Pay the member rate plus dues.

Rates and dues are listed on the IMAGE Website.



Registration Tiers:

Early	On or before 7 July, Midnight EDT
Mid	On or before 12 August, Midnight EDT
On-Site	After 12 August, Midnight EDT

Full Convention Rates

Includes access to the Opening Session, Icebreaker Reception, Oral and Poster Sessions, Special Sessions, Refreshment Breaks, End-of-Day Receptions, Exhibition, Official Program Book, Event App, and Digital Proceedings.

Member		Nonmember	
Early	\$795	Early	\$1,020
Mid	\$1,095	Mid	\$1,340
On-Site	\$1,225	On-Site	\$1,475
Emeritus	\$395	Guest (non-geo)	\$155
		Guest Emeritus (non-geo)	\$80

One- and Two-Day Rates

Includes access to those specific day's events.

Member		Nonmember	
One-Day Early	\$405	One-Day Early	\$565
One-Day Mid	\$455	One-Day Mid	\$615
One-Day On-Site	\$515	One-Day On-Site	\$680
Two-Days Early	\$615	Two-Days Early	\$735
Two-Days Mid	\$670	Two-Days Mid	\$785
Two-Days On-Site	\$735	Two-Days On-Site	\$850

Student Rates

Member		Nonmember	
Early	\$205	Early	\$265
Mid	\$335	Mid	\$405
On-Site	\$460	On-Site	\$525

Exhibition Only Rates

Includes everything being held in the exhibit hall.

Exhibition Only – One-Day	\$135
Exhibition Only – Three-Days	\$365

Nonconvention Attendance

\$40 plus cost of ticketed event

Hotel Information

Please book your rooms through our Official Housing Provider, Maritz. This helps IMAGE meet hotel room block commitments and avoid penalties that could ultimately increase convention expenses. New hotel reservations must be booked by **27 July 2026**.

Hotel	Address	Single/Double	Extra Person Charge	In-Room Dining	Parking (Daily)*	Guest Room Internet
Marriott Marquis Houston	1777 Walker Street Houston, TX 77010	\$238	\$0	Yes	Self – \$50 per night Valet – \$70 per night	Non-Marriott Bonvoy Member \$14.95 Basic prior to taxes \$3.00 extra to upgrade to Premium prior to taxes Marriott Bonvoy Member Complimentary

Rates and parking fees do not include taxes.

*Parking rates are subject to change.

Rates

To receive the convention room rate, all hotel reservations must be made through the Official Housing Provider, Maritz. Hotel rates are listed above and online.

Deposits

All reservations will require a credit card guarantee equal to the first night's stay, inclusive of tax, as a deposit. A valid credit card and expiration date should be provided with your room request. The hotel may cancel room reservations without notification if one night's deposit is not received prior to your scheduled arrival.

Online

All reservations made online will require a valid credit card number and expiration date to guarantee your reservation. Make reservations online at imageevent.org.

Changes/Cancellations

Changes or cancellations to existing reservations may be made online or by contacting the Housing Bureau by **27 July**. Any changes or cancellations after **31 July** must be sent directly to the hotel. Guaranteed room reservations not cancelled 72 hours prior to arrival and not used will subsequently be billed by the hotel to your credit card account.



Photo of Marriott Marquis Houston

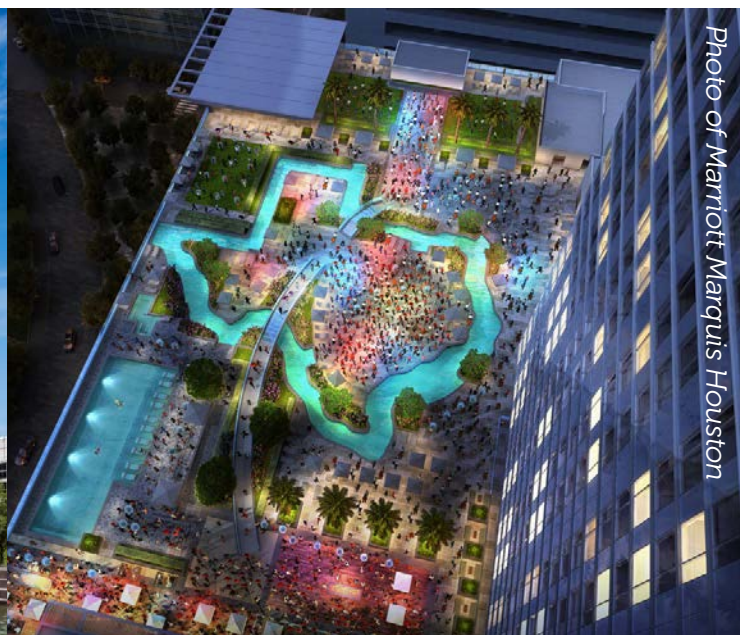


Photo of Marriott Marquis Houston

Exhibit Hall

Interact with top geoscience innovators in the **IMAGE '26** exhibit hall! To better serve our audience, the exhibition features four content focus areas: Near-Surface, Digital, Carbon Management, and Global Energy Opportunities.



Exhibition Hours:

Monday, 17 August

Exhibition and Icebreaker Reception
5:30 p.m.–7:30 p.m.

Tuesday, 18 August

Exhibition 9:00 a.m.–6:00 p.m.

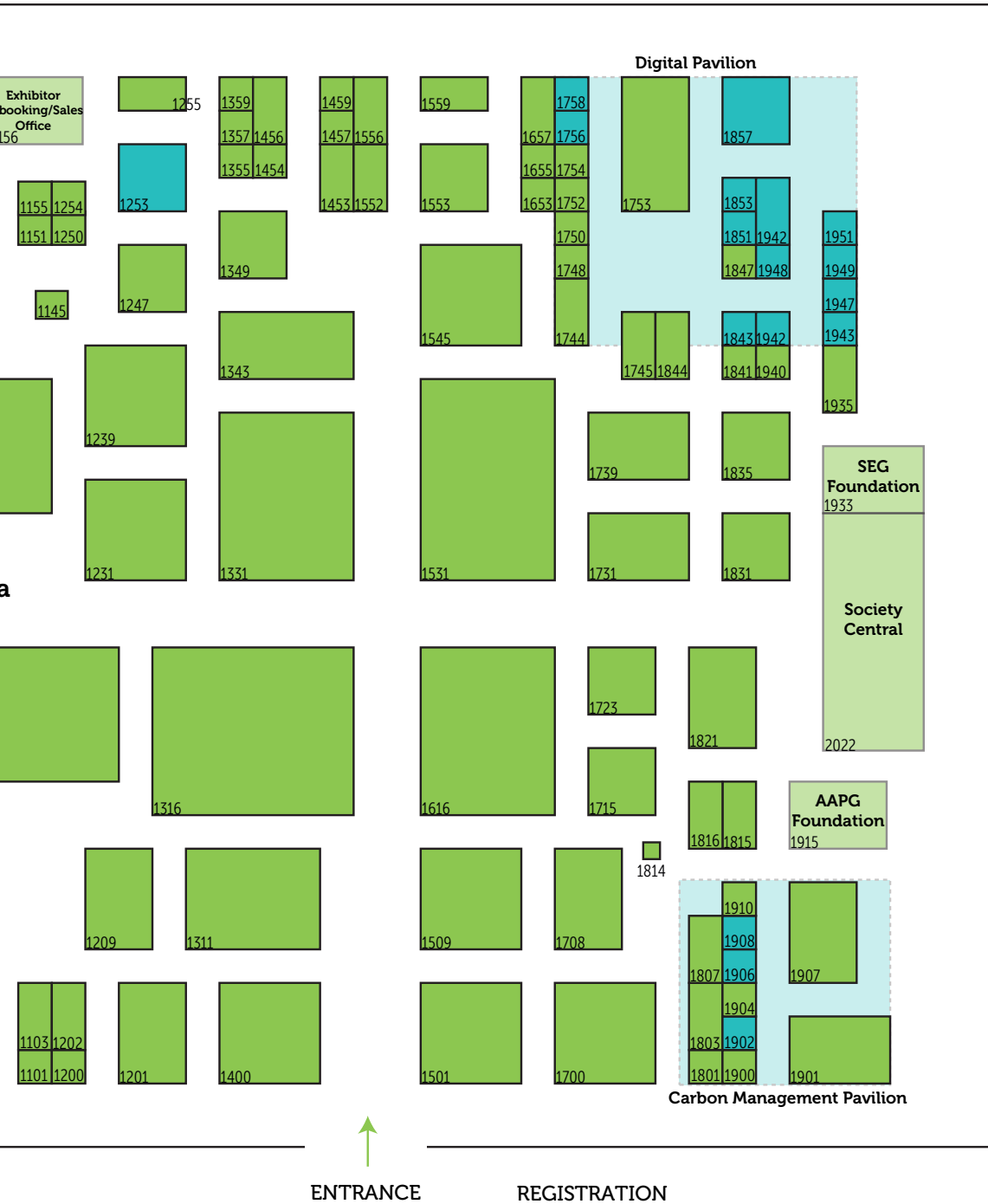
Wednesday, 19 August

Exhibition 9:00 a.m.–6:00 p.m.

Thursday, 20 August

Exhibition 9:00 a.m.–3:00 p.m.

Exhibit Floor Plan Guide Sponsor:



Exhibitor List

Exhibitor list is current as of 7 May

Exhibitor Name	Booth Number	Exhibitor Name	Booth Number
AAPG	2022	Fugro	514
AAPG Foundation	1915	GeoCare Benefits Group Insurance	545
Absolute Imaging Inc.	1456	GEODEVICE	707
Advanced Geophysical Technology Inc.	1708	GeoEdges Inc.	1101
Advanced Logic Technologies SA	801	Georex MCG LLC	1349
Al Hazzazi Global Technologies	800	GeoExpro	1457
Aramco	1316	GeoLogica Training	1556
ARK CLS Limited	1821	Geological Society of America	1815
Atlas Fluid Controls Corporation	1355	GeoMark Research	1051
Avalon Sciences Ltd.	615	Geometrics, Inc.	808
Badley Ashton	1004	GeoMind	621
Baylor University Department of Geosciences	645	GeoPartners Ltd	330
Because Science	1155	Geophysical Deep Sensing Technology Co.,Ltd	1803
BEG CORE EXHIBIT	1907	Geophysical Society of Houston	1655
BEICIP Inc.	611	Geophysical Technology Inc	1731
Beijing Premier-Union International Investment Co.	521	GeoScienceWorld	1359
BGP Inc.	1616	GeoSoftware	730
Bits of Nature LLC	1657	Geospace Technologies, Inc.	1231
C&C Reservoirs	1050	Geostuff	703
Cabral Energy	1005	Geotek Ltd	642
Carbon Management Theater	1901	Geoteric	1247
Career Coaching Pod	315	GeoTomo LLC	1201
Cegal, LLC	720	Geovista LTD	804
China Oilfield Services, Ltd	1700	GIGABYTE	612
China University of Petroleum (Beijing)	641	Global Energy Opportunities (GEO) Theater	228
CMG Seismic Solutions	1020	GVERSE GeoGraphix	1553
Colorado School of Mines	638	Halliburton	1239
ConocoPhillips	411	Hanyang University (RISE.ml)	749
Core Laboratories	1459	Hasting Micro-Seismic Consulting, Inc.	705
Danomics Inc.	1104	Hefei Guowei Electronics Co.Ltd	909
Datalog & GeoVision	848	Herrenknecht AG	1910
DeepWave Consortium	547	High Tech, Inc.	709
Delft Inversion	649	Houston Geological Society	501
dGB Earth Sciences	839	i2k Connect	1754
Digital Theater	1753	Ikon Science	1545
DMT GmbH & Co. KG	900	In-Depth Geophysical Inc	745
DownUnder GeoSolutions (America) LLC	1331	INOVA Geophysical	714
Dynamic Graphics, Inc.	1816	IRIS Instruments	803
EAGE - European Association of Geoscientists and	704	ISTI Instrumental Software Technologies, Inc	1801
Earth Signal Processing Ltd.	1144	Katalyst Data Management	821
EasyCopy Company & iGeos	844	Land Seismic Noise Specialists, LLC	1255
EDCON-PRJ, Inc	1100	Leobersdorfer Maschinenfabrik GmbH (LMF)	1831
Eliis inc.	1343	Lumina Geophysical	1209
EMGS	1202	Lumina Geophysical / Jio	1752
Empower Logistics LLC	511	MicroSeismic, Inc.	1106
Engenius Software	1152	Morocco	422
Envoi Limited	324	Mozambique	332
Fairfield Geotechnologies	831	Nanometrics	1552
Falmouth Scientific Inc	1000	National Compressed Air Canada Ltd.	1454
Faraday Geophysics	1715	Near-Surface Theater	807
FEBUS Optics	543	Neuralog	942
FGPS Limited	1821	Newfoundland & Labrador	423

Exhibit space is still available!
Promote your business by exhibiting at IMAGE '26!
Scan the QR code at right to learn more.



Exhibitor Name	Booth Number	Exhibitor Name	Booth Number
Nova Scotia	424	SOCIETY CENTRAL	2022
NVentures Ltd	417	Sonardyne	507
Oklahoma State University	1250	Sound Oceanics - Seisgadget	903
Open iT, Inc.	1750	Sound QI Solutions Ltd.	541
OptiSeis Solutions Ltd.	1453	South Africa	231
Orica	740	Spotfire	1844
Ovation Data	1745	Spotlight	1900
Oxy	1015	Stone Quilt Design	510
Paragon Geophysical Services, Inc.	600	Stratum Reservoir	1904
Paulsson, Inc.	1723	STRYDE Limited	614
PE Limited	931	STUDENT AND FACULTY LOUNGE	410
Peru	430	Subsurface Clarity, LLC	1847
PetroSkills	603	Subsurface Consultants & Associates, LLC (SCA)	843
Petrostrat	1357	subsurfaceAI Inc.	715
Petrosys Interica	1653	Suriname	322
Poster Assistance Desk	449	TDI-Brooks	815
Poster Sessions	651	Tech Limit	515
Premier Corex	606	TEECsolutions LLC	748
Qeye	1559	Teledyne Marine	915
QITeam International Pte Ltd	1254	Telemark Energy Services	706
R.T. Clark Co. Inc.	708	TERRASYS Geophysics	746
RadExPro seismic software	938	Texas A&M University	646
Rare Earth Mercantile	1114	TGS	1501
RevoChem	601	ThinkOnward	1744
Rock Flow Dynamics	1835	Thrust Belt Imaging Inc.	1748
ROGII Inc.	1739	TRICON Geophysics Inc.	1150
RPS (a Tetra Tech company)	1807	Troika International Limited	1821
S&P Global Energy	1130	Tunisia	233
SAExploration	1400	Ulmatec	1831
Sander Geophysics Ltd	951	University of Houston	1001
Sandia National Laboratories	902	University Of Kansas Geology/KICE3	643
Searcher	739	University of Oklahoma	639
Sequent	742	University of Wyoming Dept of Geology & Geophysics	640
SEG	2022	Uruguay	432
SEG EVOLVE FIELD CAMP POSTERS	349	UWNSG - Near Surface Geophysics Instrument Center	907
SEG Foundation	1933	Verif-i Limited	1821
Seismic Source Co.	700	Vinci Technologies	1151
Seismological Society of America	512	Viridien	1121
SeisWare	1020	Waverity	1110
SensorEra Inc.	1103	Weihai Sunfull Geophysical Exploration Equipm.	1006
SEPM Society for Sedimentary Geology	1935	Welligence Energy Analytics	1011
Sharp Reflections	1020	Wildcat Technologies, LLC	1200
SHEARWATER	1509	Xcalibur Smart Mapping	701
SINOPEC Geophysical Research Institute	1311	XtremeGeo	608
Sisprobe by Egis	901	Zonge International	806
SLB	1531		
SmartSolo Scientific	1007		

Tomorrow's Leaders Are Counting on Us.

Help Us Build a Stronger Geoscience Foundation.

Geoscience education is facing a crisis. Programs are shrinking, research support is declining, and fewer students are entering the field. All of this is happening at a time when geoscience's role in energy security, environmental sustainability, and global progress has never been more important.

The AAPG Foundation has identified where action can make the greatest impact, and will soon launch a comprehensive capital campaign to provide funding for education, research, innovation, and outreach across the geoscience spectrum.

This bold effort is about more than meeting today's needs. It is about restoring momentum and creating new opportunities for the next generation of geoscience leaders.

Help Shape the Future

Learn how our campaign is making an impact, and how you can be part of it.

Visit Booth #1915
Campaign.AAPGFoundation.org

AAPG | FOUNDATION

