



# First Presbyterian Church of Beaufort

A Service for the Worship of God  
July 18, 2021  
10:00 AM



LIRBY ROBERTSON, Artist

*To all who are weary and need rest,  
To all who mourn and need comfort,  
To all who are lonely and need friendship,  
To all who are glad and would serve their neighbors,  
To all who are complacent and need disturbing,  
To all who sin and need a Savior,  
This church opens wide its doors  
In the name of Christ and bids you welcome.*

**Sanctuary:** 410 Church Street

**Office, Education & Outreach Building:** 1201 North Street

[firstpresbeaufort.org](http://firstpresbeaufort.org)

843-524-3051

[www.facebook.com/firstpresbeaufort](https://www.facebook.com/firstpresbeaufort)

[info@firstpresbeaufort.org](mailto:info@firstpresbeaufort.org)



*As we gather to worship, may we enter joyfully.*

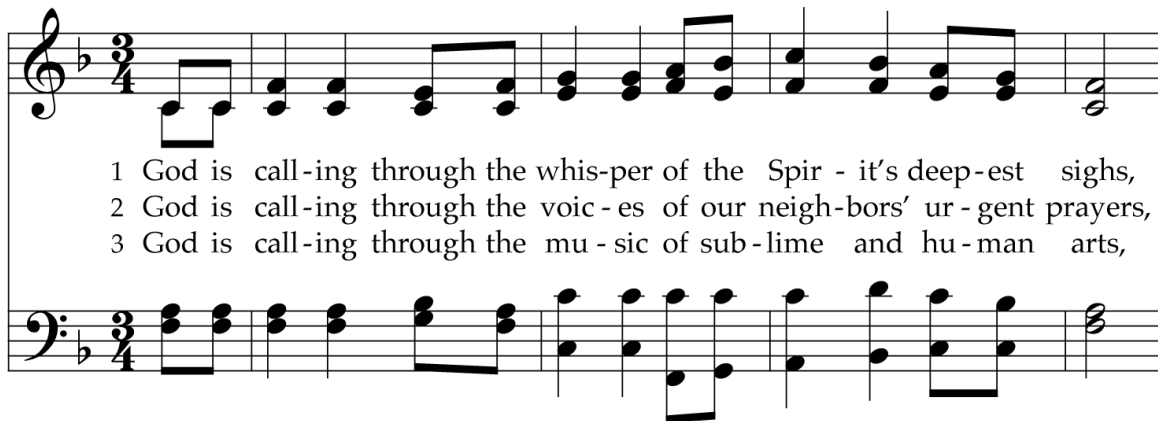
Striking of the Hour

Prelude..... *Jesus Christ, My sure Defense*  
J.S. BACH

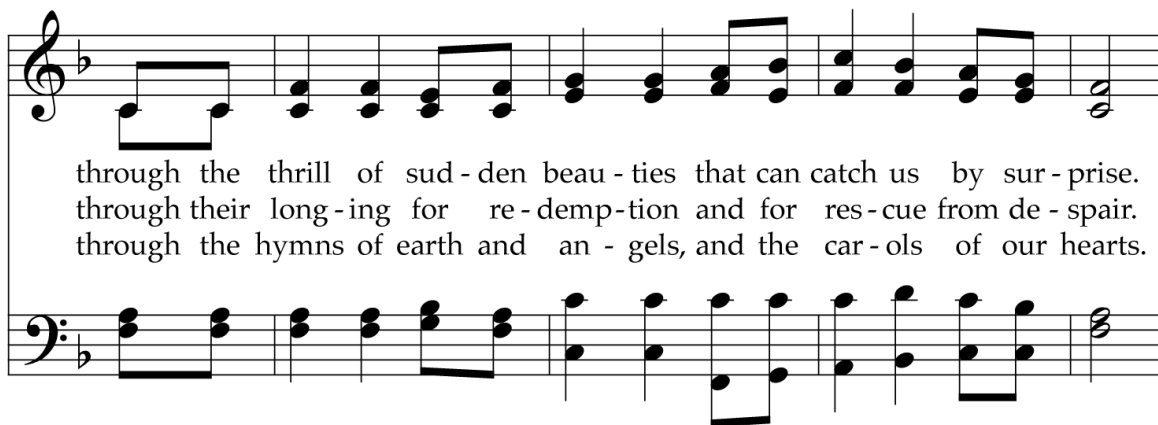
\*Opening Words & Call to Worship ..... Reverend Becky Albright

*Come,*  
**you who are weary.**  
*Come,*  
**you who are anxious.**  
*Come,*  
**you who are uncertain.**  
*Come,*  
**you who are burdened.**  
*Come away to a deserted place,*  
**to a restful place,**  
*To a renewal place,*  
**to a grace-full place, with Jesus.**

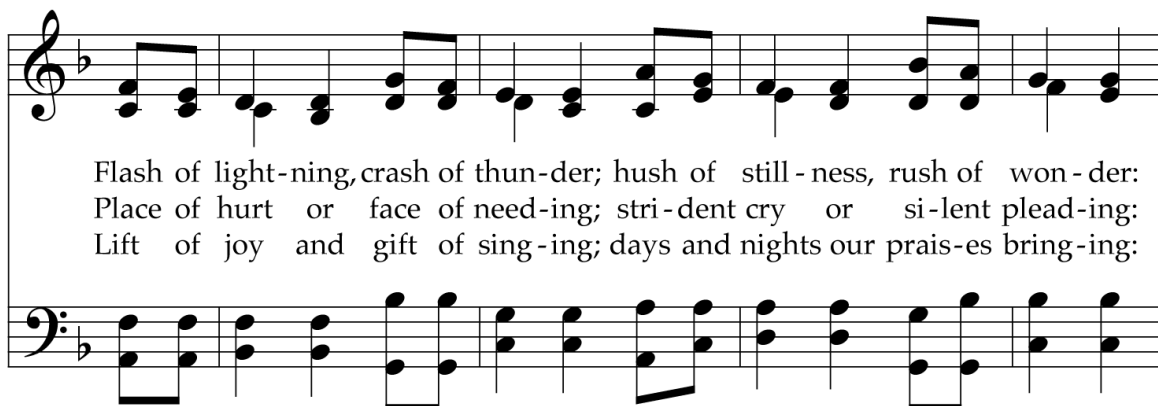
\*Hymn..... *God Is Calling through the Whisper*



1 God is call-ing through the whis-per of the Spir - it's deep-est sighs,  
2 God is call-ing through the voic - es of our neigh-bors' ur - gent prayers,  
3 God is call-ing through the mu - sic of sub-lime and hu - man arts,



through the thrill of sud - den beau - ties that can catch us by sur - prise.  
through their long-ing for re - demp-tion and for res-cue from de - spair.  
through the hymns of earth and an - gels, and the car - ols of our hearts.



Flash of light-ning, crash of thun-der; hush of still - ness, rush of won - der:  
Place of hurt or face of need-ing; stri-dent cry or si-lent plead-ing:  
Lift of joy and gift of sing-ing; days and nights our prais-es bring-ing:



This wide-ranging text reminds us of the many surprising and urgent ways God calls to us, both to draw us near and to send us forth. In the third line of music it is especially effective at harnessing the momentum of the phrases that are each a note higher than the one before.

TEXT: Mary Louise Bringle, 2003  
 MUSIC: Polish carol; harm. Wilbur Lee, 1958  
 Text © 2006 GIA Publications, Inc.  
 Music Harm. © 1958 Broadman Press (admin. Music Services)

W ŻŁOBIE LEŻY  
 8.7.8.7.8.8.7.7  
 (this tune in a higher key, 128)

## Prayer of Confession

God of mercy, our need is great. The pandemic has left us tired, anxious and uncertain. We have stretched beyond our limits and numbed ourselves to our pain. We have accepted getting by as good enough. We have rejected your offers of spiritual food as unrealistic and impractical. Help us, Holy God, to acknowledge and confess our need. Help us embrace your command for Sabbath rest. Help us care for ourselves so we can continue to care for others. Amen.

(Let us continue in prayer silently)

## Congregational Response

Hear our prayer, O Lord. Hear our prayer, O Lord.  
 Incline thine ear to us and grant us thy peace. Amen.

## Assurance of Pardon

## Gloria Patri

*Glory be to the Father, and to the Son, and to the Holy Ghost;  
 As it was in the beginning, is now, and ever shall be,  
 World without end, Amen, Amen.*

Children's Sermon..... Reverend Becky Albright  
 (As we sing *Jesus Loves Me*, children 3 to 6 are dismissed to the playground)

Music Offering ..... *My Shepherd Will Supply My Needs*  
 Vic Varner, *Music Director* WATTS  
 Lily Cooper, *Organist*  
 Meredith Halopoff and Noah Krepps, *Cantors*

\*Hymn ..... *There is a place of Quiet Rest*



a place where sin can-not mo - lest, near to the heart of God.  
 a place where we our Sav - ior meet, near to the heart of God.  
 a place where all is joy and peace, near to the heart of God.

*Refrain*

O Je - sus, blest Re-deem - er, sent from the heart of God,

hold us, who wait be - fore thee, near to the heart of God.

A Presbyterian campus pastor and choir director in Missouri wrote this simple but moving hymn in response to the death of two young nieces from diphtheria. By distilling such personal grief into the shared assurances of faith, these words have brought comfort to many.

TEXT and MUSIC: Cleland Boyd McAfee, 1901

MC AFEE  
CM with refrain

|                      |   |
|----------------------|---|
| Psalter Lesson ..... | Psalm 23  |
| Gospel Lesson.....   | Mark 6:30-34; 53-56   |
| Sermon.....          | <b>Rest, Refuge, Retreat, and Retirement</b><br>Reverend Becky Albright |

## \*Apostles' Creed

I BELIEVE in God, the Father Almighty, Maker of heaven and earth,

And in Jesus Christ, his only Son, our Lord; who was conceived by the Holy Ghost, born of the Virgin Mary, suffered under Pontius Pilate, was crucified, dead, and buried. He descended into hell; the third day he rose again from the dead; he ascended into heaven and sitteth on the right hand of God, the Father Almighty; from thence he shall come to judge the quick and the dead.

I believe in the Holy Ghost, the holy catholic church, the communion of saints, the forgiveness of sins; the resurrection of the body, and the life everlasting. Amen

## Pastoral Prayer and the Lord's Prayer

Our Father who art in heaven, hallowed be thy name.

Thy kingdom come, thy will be done, on earth as it is in heaven.

Give us this day our daily bread;

And forgive us our debts, as we forgive our debtors;

And lead us not into temptation, but deliver us from evil.

For thine is the kingdom and the power and the glory, forever.

Amen

## Giving and Receiving

Offertory ..... *The Lords My Shepherd*  
C.S. LANG

## \*Doxology and Prayer of Dedication

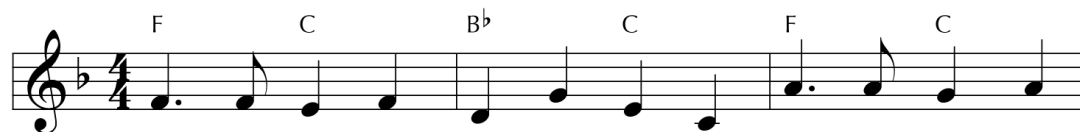
*Praise God from whom all blessings flow;*

*Praise God all creatures here below;*

*Praise God above, ye heavenly host;*

*Praise Father, Son, and Holy Ghost. Amen.*

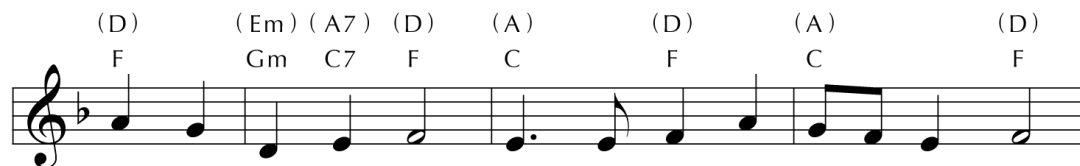
## \*Hymn ..... *Go in Grace and Make Disciples*



1 Go in grace and make dis - ci - ples. Bap - tize in God's  
2 Go and fol - low Christ's ex - am - ple, not to van - quish,  
3 Go in Pen - te - cos - tal spir - it, man - y tongues and



ho - ly name. Tell of death and res - ur - rec - tion; Eas - ter's  
but to heal. Mend the wounds of sin's di - vi - sions. Ser - vant  
man - y gifts. Feed the hearts of hun - gry peo - ple. Spread the



vic - tory now pro - claim. Christ's com - mis - sion sends us forth  
love to all re - veal. Roles and ranks shall be re - versed;  
gos - pel that up - lifts. Till the day of Christ's re - turn,

(B) (Em) (B) (E) (A) (D)  
 D Gm D G C F

to the na - tions of the earth. Go in grace and  
 jus - tice flow for all who thirst. Go and fol - low  
 as dis - ci - ples, teach and learn. Go in Pen - te -

(G) (D) (G) (Em) (D) (A7) (D)  
 Bb F Bb Gm F C7 F

make dis - ci - ples, mid - wives for the world's re - birth.  
 Christ's ex - am - ple. Forge a world of last made first.  
 cos - tal spir - it: let God's flame of wit - ness burn.

*Guitar chords do not correspond with keyboard harmony.*

This text based on Jesus' Great Commission (Matthew 28:19–20) emphasizes that engaging in mission according to the model of Christ's life and ministry inspires service rather than conquest. The gospel message is a gift of life and hope made known in healing, justice, and peace.

TEXT: Mary Louise Bringle, 2001

MUSIC: William P. Rowan, 1999

Text © 2002 GIA Publications, Inc.

Music © 1999 William P. Rowan (admin. GIA Publications, Inc.)

WONDROUS LIGHT

8.7.8.7.7.8.7

\*Benediction

Postlude ..... *Festival Voluntary*  
JEREMIAH CLARKE

\*All Who Are Able Please Stand | + Ushers Will Seat Latecomers

## WELCOME & ANNOUNCEMENTS

**WELCOME to all who join us for worship today.** If you are without a church home, you will be warmly welcomed into our fellowship. We are glad you are here! Please like us on Facebook and visit our website at [www.firstpresbeaufort.org](http://www.firstpresbeaufort.org) for sermons, news, and current events.

**THE FLOWERS TODAY ARE** given in honor of Reverend Becky Albright by Rex Deloach and Ruthann Ray.

### **GENEVA CIRCLE AND BEYOND!**

**What:** Wednesday Morning Prayer Walk (walk 30 minutes average – power walk, stroll, or roll)

**Who:** All First Presbyterian Women, families, friend, or neighbors

**Starting:** Wednesday, July 21–Wednesday, July 28

**Time:** 7:00am prayer begins

**Where** Southside Park in Mossy Oaks area parking lot off Southside Blvd.

**Heavy Rain Location:** Lady's Island Walmart

### **MENTAL HEALTH AWARENESS:**

**AWAKENING THE SPIRIT IN US TO BECOME MORE COMPASSIONATE.**

“The greatest weapon against stress is our ability to choose one thought over another.” – William James

### Officer Recommendations for the Class of 2024

The Nominating Committee is charged with the responsibility of nominating a slate of four Elders and four Deacons (class of 2024) to be presented to the congregation for election. Your participation through prayer and recommendation of qualified candidates is essential to the process. Candidates for each office should be recommended according to their God-given gifts.

Please use the form below to recommend members of the congregation to be considered as Elders and Deacons for the class of 2024. Those considered should be active members, consistent in their worship attendance, and visibly engaged in the ministry and mission of First Presbyterian Church. You can drop the form in the offering plate. If you have questions please contact Blakely Williams, Chair of the Nominating Committee by email at [batwilliams@yahoo.com](mailto:batwilliams@yahoo.com).

---

### Officer Recommendations for the Class of 2024

Deacon:

---

Elder:

---

### OUTREACH ANNOUNCEMENTS

The children of Neighborhood Outreach Connection (NOC) at Marsh Pointe Center would like to thank you for your generosity by providing healthy snacks. As always, you went above and beyond and they now have granola bars and fruit snacks to carry them into summer. The majority of these students receive free lunches at school and are ready for a snack when they arrive at NOC following their school day. Even though it is not reflected in these photos, there are generally 23 children who receive tutoring and assistance with their homework Monday - Thursday. This summer it is anticipated that this number will expand to around 35 as children from the Parkview Center join them. Following some renovations to Parkview, both programs will be in full operation beginning in the fall, during the third week of August. Our support is instrumental in helping the staff of NOC provide for these children. Please note that we are now collecting **Animal Crackers and Welches fruit snacks** and will continue to do so for the next 6-8 weeks at which time we will offer a new opportunity or "ask". When these donations are delivered, we are also adding apples and oranges. On behalf of the Outreach Committee, we thank you for your ongoing support of this worthy organization that serves children in need in our community.

Our kitchen appliances are in need of extreme repairs. In most cases, they are in need of being replaced. The property committee is diligently searching for good products at lesser costs. They are also realizing, the need for substantial resources not in the annual budget. Several members have come forward with contributions for this ask, yet we are not close to the dollar amount needed. You are asked to prayerfully consider a contribution to this to this unanticipated and untimely request.

Thank you,

The Property Committee