

**GOODWE**

Engineered by UMAX



# Modular Heavy Steel Commercial Solar Carport

## ATLAS SERIES



## Features & Advantages



Strong heavy steel frame  
Certified structure and panels



Pre-fabricated bolted modules  
Quick and safe installation




Built-in waterproof design  
Expandable modular system



Long-term durable structure  
Minimal maintenance required

 Mondiaux Solar

 1300 911 110

 [info@mondiaux.com.au](mailto:info@mondiaux.com.au)

 <https://www.mondiaux.solar>

 32 Kembla Street, Fyshwick ACT 2609



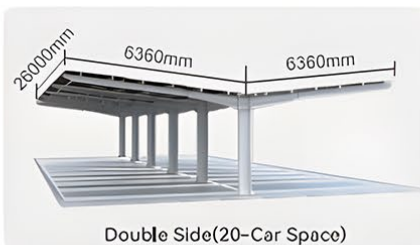
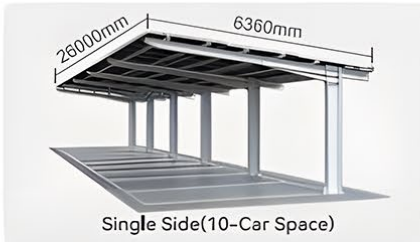
# Carport Specifications

**GOODWE**  
Engineered by UMAX



## Structural Parameters

Material	Heavy Steel
Structure System	Welded mainframe with modular bolted connections
Design Standards	AS/NZS1170 & AS4100 (AU) Adaptable to international codes
Wind Load Capacity	Region A, B & C Configurable per site
Design Life	25 Years



	Singe side (10 Parking Space)	Double side (20 Parking space)
System Size	38.52 kW	77.04 kW
Length	6360 mm	12720 mm
Structure Width	2600 mm	2600 mm
Total Panel Width	26000 mm	26000 mm
Clearance Height	3000 mm	3000 mm
Peak Height	4200 mm	4200 mm
No. of Panels	GoodWe Polaris 535 W x 72 PCS	GoodWe Polaris 535 W x 144 PCS
Footing	At least 700mm diameter pier with 2000mm depth	At least 800mm diameter pier with 2500mm depth

## Structure Details



## Umax Online Partner Platform

Visit [www.umaxenergy.com/orderlink](http://www.umaxenergy.com/orderlink) — everything you need to quote, configure, and manage your solar carport projects, all in one place.



Register Now

- Instant Project Quotation
- Carport Configurator Tool
- System Sizing Calculator
- Logistics & Packing Insights
- Partner Order Dashboard
- Exclusive Market Resources