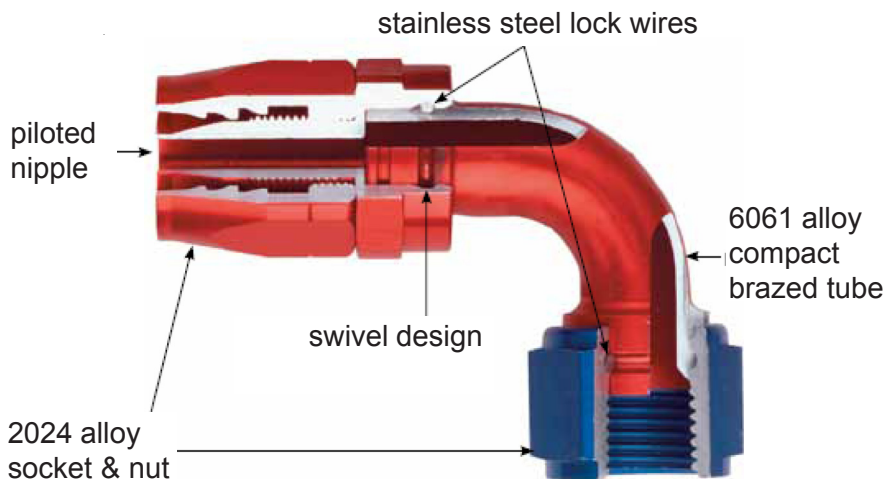


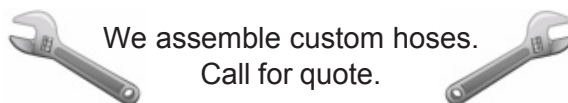
Hose & Fitting Information

AN (Air Force/Navy) specification hose and fittings refer to "dash" sizes, arrived at by multiplying the nominal bore size of the hose by 16, hence 1/2" hose equals -8. The hose end fitting we list are designed to be used with Aeroquip FC333, or similar specification hose. Hose end fittings seal on a SAE 37 degree flair making them compatible with other components that share the industry standard AN / JIC 37 degree sealing surface.



Color Choices

We offer the same high quality, motorsports grade hose end in traditional Red/Blue and Titanium/Black. Both are available at the same competitive price, which makes our Ti/Black a great option as most suppliers charge more for colors other than Red/Blue. Additionally, we keep a large stock of threaded components (unions, fittings, adaptors) in both blue and black so you can complete your plumbing project in a uniform color combination and only have to shop with one supplier to do it.



Price & Service

When comparing prices on fittings be aware, not all "red and blue" fittings are created equally. Although -AN fittings are generally interchangeable, there can be vast differences in quality- especially when comparing motorsport and hobby grade components. BAT strives to offer competitive pricing on all our plumbing products, as well we keep a large inventory so that we can offer simple one stop shopping. In the case of an item being out of stock, we can usually offer an alternative component, or brand, to keep you on schedule. Not sure what you need, or how to use it? Our technical department is always available to help. Ordering in bulk quantities, or for resale? Contact our wholesale department for additional trade discounts.



[**Click for Clearance Items**](#)

Not The Typical Red & Blue

BAT is pleased to announce our new line of high quality, taper-swivel, -AN hose ends. Their distinctive titanium and black anodized finish offers a fresh new look over ordinary red and blue; making them perfect on everything from vintage race cars and hot rods, to modern hi-tech applications. Fittings are currently available in sizes -4 through -20AN in straight, 30, 45, 60, 90, 120, 150, 180 angles (even -4 hose ends swivel!). Compare and save; we offer a full feature hose end, for similar (or less) than competitors basic non-swivel fittings, and in a unique color combination at no additional charge.



Straight Hose End



-AN size part # price \$

-4AN	TS-4	\$6.50
-6AN	TS-6	\$6.95
-8AN	TS-8	\$8.75
-10AN	TS-10	\$9.95
-12AN	TS-12	\$13.95
-16AN	TS-16	\$22.50
-20AN	TS-20	\$35.00

120 Degree Hose End



-AN size part # price \$

-4AN	T120-4	\$17.70
-6AN	T120-6	\$20.25
-8AN	T120-8	\$22.45
-10AN	T120-10	\$26.50
-12AN	T120-12	\$29.90
-16AN	T120-16	\$41.50
-20AN	T120-20	\$64.50

45 Degree Hose End



-AN size part # price \$

-4AN	T45-4	\$12.90
-6AN	T45-6	\$14.50
-8AN	T45-8	\$17.50
-10AN	T45-10	\$20.25
-12AN	T45-12	\$23.95
-16AN	T45-16	\$32.50
-20AN	T45-20	\$52.50

150 Degree Hose End



-AN size part # price \$

-4AN	T150-4	\$17.70
-6AN	T150-6	\$20.25
-8AN	T150-8	\$22.45
-10AN	T150-10	\$26.50
-12AN	T150-12	\$29.90
-16AN	T150-16	\$41.50
-20AN	T150-20	\$64.50

90 Degree Hose End



-AN size part # price \$

-4AN	T90-4	\$12.90
-6AN	T90-6	\$14.50
-8AN	T90-8	\$17.50
-10AN	T90-10	\$20.25
-12AN	T90-12	\$23.95
-16AN	T90-16	\$32.50
-20AN	T90-20	\$52.50

180 Degree Hose End



-AN size part # price \$

-4AN	T180-4	\$17.70
-6AN	T180-6	\$20.25
-8AN	T180-8	\$22.45
-10AN	T180-10	\$26.50
-12AN	T180-12	\$29.90
-16AN	T180-16	\$41.50
-20AN	T180-20	\$64.50

Quantity and Dealer pricing available

BAT Inc. ♦ 7630 Matoaka Road., Sarasota, FL. 34243 ♦ (941) 355-0005 fax (941) 355-4683

Prices subject to change without notice.

Tube Swivel Hose Ends (continued)

30 Degree Hose End



-AN size	part #	price \$
-4AN	T30-4	TBA
-6AN	T30-6	\$18.25
-8AN	T30-8	\$20.85
-10AN	T30-10	\$22.75
-12AN	T30-12	\$27.50
-16AN	T30-16	TBA
-20AN	T30-20	TBA

60 Degree Hose End



-AN size	part #	price \$
-4AN	T60-4	TBA
-6AN	T60-6	\$18.25
-8AN	T60-8	\$20.85
-10AN	T60-10	\$22.75
-12AN	T60-12	\$27.50
-16AN	T60-16	TBA
-20AN	T60-20	TBA

Quantity and Dealer pricing available

Forged Hose Ends

Forged hose ends are slightly more compact than a tube version of the same angle and are best used where space is limited. Forged hose ends do offer additional strength over tube type fittings, but their flow characteristics are not as good as a tube hose end of the same angle. Available as swivel, double seal in a limited selection of angles (45 & 90 degree).

45 Degree Hose End -FORGED



-AN size	part #	price \$
-6AN	T45-6F	\$16.20
-8AN	T45-8F	\$20.25
-10AN	T45-10F	\$24.50
-12AN	T45-12F	\$29.25
-16AN	T45-16F	\$40.50

90 Degree Hose End -FORGED



-AN size	part #	price \$
-6AN	T90-6F	\$16.20
-8AN	T90-8F	\$20.25
-10AN	T90-10F	\$24.50
-12AN	T90-12F	\$29.25
-16AN	T90-16F	\$40.50

Quantity and Dealer pricing available



We assemble custom hoses.
Call for quote.



Metric Hose Ends

With the "world market" it is becoming more common to encounter metric thread on various components throughout a vehicle. We offer a unique series of hose ends that connect directly to Aeroquip type -AN braided hose and thread on metric male fittings with 1.5 pitch. Now it is possible to make replacement or custom fuel and oil hoses on site using durable braided type hose and the more versatile -AN plumbing system. Continue to the next page for more information and pricing.



Metric Hose End Fittings

Our line of economically priced metric hose end fittings. These easy to assemble, taper-socket, swivel hose ends are constructed from 6061 alloy and supplied in an attractive black luster anodized finish. Angles, 45 and 90 degree, are one-piece bent tube construction with viton o-ring seals allowing 360 degree rotation and maximum fluid flow. We will also continue to offer the German manufactured (black/gold) forged, cutter-socket, type hose ends; as they are offered in some unique sizes, and forged angles are more compact where needed. The only down side: exchange rate economics have made buying German products more costly, and is the primary reason for developing our own metric fitting line. Fortunately you now have a choice!

Straight Metric Female to -AN Hose



Metric	-AN Hose	Part #	Price \$
14mm	-6AN	FS-1406	\$13.55
16mm	-6AN	FS-1606	\$13.55
16mm	-8AN	FS-1608	\$17.75
18mm	-8AN	FS-1808	\$18.50
18mm	-10AN	FS-1810	\$19.05
22mm	-10AN	FS-2210	\$19.90
26mm	-12AN	FS-2612	\$35.00
30mm	-12AN	FS-3012	\$35.00
30mm	-16AN	FS-3016	\$45.00

Straight Metric Female to AN Hose



Metric	-AN Hose	Part #	Price \$
12mm	-4AN*	FS-1204T	\$31.80
12mm	-6AN	FS-1206F	\$20.75
14mm	-6AN	FS-1406F	\$22.85
16mm	-6AN	FS-1606F	\$22.85
18mm	-8AN	FS-1808F	\$28.50
22mm	-10AN	FS-2210F	\$30.50
26mm	-12AN	FS-2612F	\$51.50
30mm	-12AN	FS-3012F	\$65.00
30mm	-16AN	FS-3016F	\$75.00

*for -4AN teflon lined hose

45° Metric Female to -AN Hose



Metric	-AN Hose	Part #	Price \$
14mm	-6AN	F45-1406	\$29.75
16mm	-6AN	F45-1606	\$30.50
16mm	-8AN	F45-1608	\$35.05
18mm	-8AN	F45-1808	\$36.00
18mm	-10AN	F45-1810	\$42.30
22mm	-10AN	F45-2210	\$45.00
26mm	-12AN	F45-2612	\$63.90
30mm	-12AN	F45-3012	\$69.50
30mm	-16AN	F45-3016	\$77.50

45° Forged Metric Female to AN Hose



Metric	-AN Hose	Part #	Price \$
12mm	-4AN*	F45-1204T	\$53.25
12mm	-6AN	F45-1206F	\$43.35
14mm	-6AN	F45-1406F	\$40.70
16mm	-6AN	F45-1606F	\$43.35
18mm	-8AN	F45-1808F	\$49.75
22mm	-10AN	F45-2210F	\$63.20
26mm	-12AN	F45-2612F	\$94.45
30mm	-12AN	F45-3012F	\$83.70
30mm	-16AN	F45-3016F	\$94.45

*for -4AN teflon lined hose

90° Metric Female to -AN Hose



Metric	-AN Hose	Part #	Price \$
14mm	-6AN	F90-1406	\$29.75
16mm	-6AN	F90-1606	\$33.50
16mm	-8AN	F90-1608	\$35.05
18mm	-8AN	F90-1808	\$36.00
18mm	-10AN	F90-1810	\$42.30
22mm	-10AN	F90-2210	\$45.00
26mm	-12AN	F90-2612	\$69.50
30mm	-12AN	F90-3012	\$69.50
30mm	-16AN	F90-3016	\$77.50

90° Forged Metric Female to AN Hose



Metric	-AN Hose	Part #	Price \$
12mm	-4AN*	F90-1204T	\$53.25
12mm	-6AN	F90-1206F	\$43.35
14mm	-6AN	F90-1406F	\$40.70
16mm	-6AN	F90-1606F	\$43.35
18mm	-8AN	F90-1808F	\$49.75
22mm	-10AN	F90-2210F	\$63.20
26mm	-12AN	F90-2612F	\$94.45
30mm	-12AN	F90-3012F	\$83.70
30mm	-16AN	F90-3016F	\$94.45

*for -4AN teflon lined hose



Importer/Distributor- BAT Inc. 7630 Matoaka Road. Sarasota, FL 34243
phone (941) 355-0005 fax (941) 355-4683

Prices subject to change without notice.

-AN Hose End Fittings Red/Blue (taper socket swivel type)

Straight Hose End



-AN size part # price \$

-4AN	FS-4	\$6.50
-6AN	FS-6	\$5.95
-8AN	FS-8	\$8.75
-10AN	FS-10	\$9.95
-12AN	FS-12	\$13.95
-16AN	FS-16	\$22.50
-20AN	FS-20	\$35.00

90 Degree Hose End



-AN size part # price \$

-4AN	F90-4	\$12.90
-6AN	F90-6	\$14.50
-8AN	F90-8	\$17.50
-10AN	F90-10	\$20.25
-12AN	F90-12	\$23.95
-16AN	F90-16	\$32.50
-20AN	F90-20	\$52.50

30 Degree Hose End



-AN size part # price \$

-6AN	F30-6	\$18.25
-8AN	F30-8	\$20.85
-10AN	F30-10	\$22.75
-12AN	F30-12	\$27.50
-16AN	F30-16	TBA
-20AN	F30-20	TBA

120 Degree Hose End



-AN size part # price \$

-4AN	F120-4	\$17.70
-6AN	F120-6	\$20.25
-8AN	F120-8	\$22.45
-10AN	F120-10	\$26.50
-12AN	F120-12	\$29.90
-16AN	F120-16	\$41.50
-20AN	F120-20	\$64.50

45 Degree Hose End



-AN size part # price \$

-4AN	F45-4	\$12.90
-6AN	F45-6	\$14.50
-8AN	F45-8	\$17.50
-10AN	F45-10	\$20.25
-12AN	F45-12	\$23.95
-16AN	F45-16	\$32.50
-20AN	F45-20	\$52.50

150 Degree Hose End



-AN size part # price \$

-4AN	F150-4	\$17.70
-6AN	F150-6	\$20.25
-8AN	F150-8	\$22.45
-10AN	F150-10	\$26.50
-12AN	F150-12	\$29.90
-16AN	F150-16	\$41.50
-20AN	F150-20	\$64.50

60 Degree Hose End



-AN size part # price \$

-6AN	F60-6	\$18.25
-8AN	F60-8	\$20.85
-10AN	F60-10	\$22.75
-12AN	F60-12	\$27.50
-16AN	F60-16	TBA
-20AN	F60-20	TBA

180 Degree Hose End



-AN size part # price \$

-4AN	F180-4	\$17.70
-6AN	F180-6	\$20.25
-8AN	F180-8	\$22.45
-10AN	F180-10	\$26.50
-12AN	F180-12	\$29.90
-16AN	F180-16	\$41.50
-20AN	F180-20	\$64.50

Forged Hose Ends

Forged hose ends are slightly more compact than a tube version of the same angle and are best used where space is limited. Forged hose ends do offer additional strength over tube type fittings, but their flow characteristics are not as good as a tube hose end of the same angle. Available as double swivel, triple seal in a limited selection of angles (45 & 90 degree).

45 Degree Hose End -FORGED



-AN size part # price \$

-6AN	F45-6F	\$16.20
-8AN	F45-8F	\$20.25
-10AN	F45-10F	\$24.50
-12AN	F45-12F	\$29.25
-16AN	F45-16F	\$40.50

90 Degree Hose End -FORGED



-AN size part # price \$

-6AN	F90-6F	\$16.20
-8AN	F90-8F	\$20.25
-10AN	F90-10F	\$24.50
-12AN	F90-12F	\$29.25
-16AN	F90-16F	\$40.50

BSP (British Standard Pipe) Hose Ends



BSP to -AN Hose Swivel Hose Ends

BSP Angle -AN Hose Part # Price \$

1/2"	00°	-8AN	BH0808-00	\$13.60
1/2"	45°	-8AN	BH0808-45	\$23.45
1/2"	90°	-8AN	BH0808-90	\$23.45
1/2"	00°	-10AN	BH0810-00	\$14.85
1/2"	45°	-10AN	BH0810-45	\$27.60
1/2"	90°	-10AN	BH0810-90	\$27.60

These 1/2" BSP swivel hose ends fit standard -AN type braided hose making it easy to plumb BSP thread components or make replacement hoses for British cars using modern high specification hose/fittings. You can even make hoses that have BSP on one end and -AN on the other. The nipple/socket is the "cutter" design which can only be used with stainless braid -AN hose, not for "lightweight" type hose.

Hose End Assembly Tools

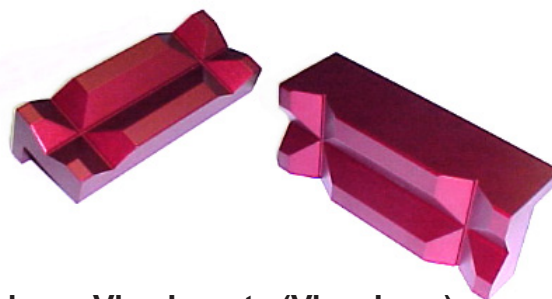


Aluminum Hose Wrench Set

Sizes part # price \$

Set of 6	HWSE	\$47.50
----------	------	---------

This economical 6 piece (-4, -6, -8, -10, -12, -16AN) hose wrench set made from 6061 aluminum alloy. Wrenches are designed to tighten the female attaching "B-nut" connection without damaging the finish. Usually supplied in RED.



Aluminum Vice Inserts (Vice Jaws)

Sizes part # price \$

Pair (2)	AVJ1R	\$19.90
----------	-------	---------

Special vice inserts featuring extra strong magnets, protect expensive hose ends during assembly. Here's another case of, "having the right tool makes all the difference." Usually supplied in RED OR BLACK. Now with stronger magnets!



Adjustable Aluminum Hose Wrench

Sizes	part #	price \$
-3 to -12	HW-AJ	\$39.50

Since it's adjustable, this wrench fits both attachment "B-nut" and assembly nuts on all brands and sizes between -3AN and -12AN sizes. Usually supplied in RED.



37° Flair Repair Seals

Description	part #	price \$
-3AN Seal	FR-3	\$2.50
-4AN Seal	FR-4	\$2.50
-6AN Seal	FR-6	\$2.05
-8AN Seal	FR-8	\$2.15
-10AN Seal	FR-10	\$2.10
-12AN Seal	FR-12	\$2.25
-16AN Seal	FR-16	\$2.60

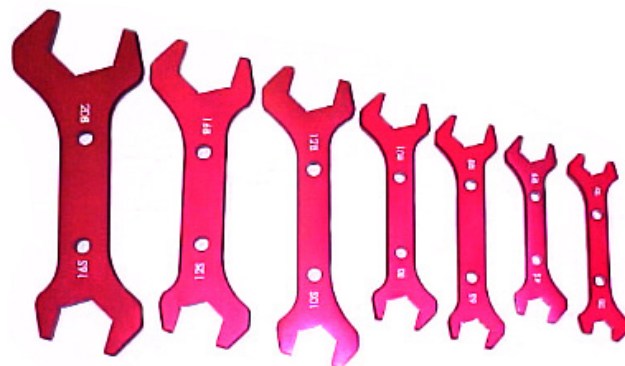
Copper/Alloy conical seals (SECO 7 type) are particularly handy for repairing slightly out of specification AN connections or sealing hand-flared tubing with tube nuts and sleeves.



Hose/Cable Cutters

Description	part #	price \$
Cutter Small	HCC1	\$38.90
Cutter All Size	HCC2	\$60.95

This is the type tool we use around the shop to make hose cutting fast, precise and easy. Available in two sizes: small (14") for up to 10AN and large (24") will cut all sizes up to 16AN.



Assembly Wrench Set

Description	part #	price \$
Assy Wrench Set	HWSA	\$69.75

The perfect -3 to -20 size -AN wrench set with both "B" nut and socket nut sizes to fit most popular brand fittings for easy hose end assembly. Flip to the "B" nut side to connect to -AN male. Wrenches are precision cut, anodized (red) aluminum.



Aluminum Hose Wrenches

Description	part #	price \$
-3AN Wrench	HW-3	\$9.25
-4AN Wrench	HW-4	\$10.00
-6AN Wrench	HW-6	\$11.75
-8AN Wrench	HW-8	\$12.50
-10AN Wrench	HW-10	\$13.75
-12AN Wrench	HW-12	\$14.50
-16AN Wrench	HW-16	\$19.15
-20AN Wrench	HW-20	\$21.80
Wrench Set (6 pc) (-3AN to -12AN sizes)	HWST-6	\$62.50

Traditional round hole style -AN wrenches are available as singles, or in a set. Wrenches are designed to tighten the female attaching "B-nut" connection without damaging the finish. Corresponding size is machined at head. Color varies depending on size.

-AN Hose End Fittings Crimp Type

Machine fit or crimp-on hose fittings are becoming more and more common as equipment to assemble is now readily available at reasonable prices. With some experience and the right materials you can be making professional hose assemblies quickly and economically. We use a wide range of fittings to make hose assemblies and are happy to make these proven supplies available to others that have suitable equipment. Unlike most crimp-on hose ends that require are unique to special hose, our fittings are designed for use with more common and affordable stainless or black textile covered "racing hose". Price includes fitting and crimp collar. Additional collars available separately.



Straight Hose End



-AN size part # price \$

-6AN	CR00-6	\$5.90
-8AN	CR00-8	\$7.95
-10AN	CR00-10	\$8.95
-12AN	CR00-12	\$12.95
-16AN	CR00-16	\$21.50

Black anodized aluminum.
Includes collar.

Crimp Collar Aluminum



-AN size part # price \$

-6AN	CRC-6	\$2.40
-8AN	CRC-8	\$2.60
-10AN	CRC-10	\$2.80
-12AN	CRC-12	\$3.85
-16AN	CRC-16	\$4.45

Additional aluminum crimp collars.

45 Degree Hose End



-AN size part # price \$

-6AN	CR45-6	\$13.50
-8AN	CR45-8	\$16.50
-10AN	CR45-10	\$19.25
-12AN	CR45-12	\$22.95
-16AN	CR45-16	\$31.50

Black anodized aluminum.
Swivel hose end. Includes collar.

90 Degree Hose End



-AN size part # price \$

-6AN	CR90-6	\$13.50
-8AN	CR90-8	\$16.50
-10AN	CR90-10	\$19.25
-12AN	CR90-12	\$22.95
-16AN	CR90-16	\$31.50

Black anodized aluminum.
Swivel hose end. Includes collar.



We assemble custom hoses.
Call for quote.





FC333 Racing Hose

Construction: elastomer tube, partial stainless steel wire inner braid and full stainless steel outer braid reinforcement.

Application: For gasoline, fuel and lubrication oils, air and water.

Operating Temperature Range: -55° f to +300° f (-49°c to 150° c).

Part Number	Hose I.D. (inch)	Hose O.D. (inch)	Max. Oper. Pressure (psi)	Min. Burst Pressure (psi)	Min. Bend Radius (inch)	Vacuum Service (in/Hg)	Weight Per Foot (lbs.)
FC3-4	.22"	.44"	1000	6000	2.0"	21	.11
FC3-6	.34"	.55"	1000	6000	2.5"	21	.16
FC3-8	.44"	.65"	1000	5000	3.5"	21	.17
FC3-10	.56"	.80"	1000	5000	4.0"	28	.21
FC3-12	.69"	.94"	1000	4000	4.5"	28	.29
FC3-16	.88"	1.15"	750	3000	5.5"	28	.38
FC3-20	1.13"	1.41"	500	2000	8.0"	21	.49

Stainless Braid Hose Information

In the early to mid 1960's, the US military required a range of strong, lightweight, hose assemblies that could be field serviced (for use in oil, fuel, and hydraulic applications) on helicopters and other aviation uses. Aeroquip developed, and produced, AE701 braided steel exterior hose and "Little gem" fittings just for this purpose. In time these hoses and fittings found their way into the surplus market and were seized upon by the motor racing fraternity, which up to that point made due with rubber hose and clamp on fittings. When the surplus market eventually dried up a new industry emerged with new manufacturers offering similar hose and fitting products. Earl's "Perm-o-flex", Goodridge "200", XRP/Keith Black "KB Plus" are all examples. Aeroquip returned to the market with their hose renamed "FC333 Racing Hose" and compatible fittings. Most hose and fitting components brands are interchangeable, and we commonly to refer to all these products as "aerospace style" hose and fittings.

Internet Hose Pricing Specials

Below we have listed pricing on the popular hose types, and sizes, we normally stock. Pricing benefits purchasing in longer bulk lengths. Make sure to tell your sales associate you want our **"internet bulk hose"** pricing.

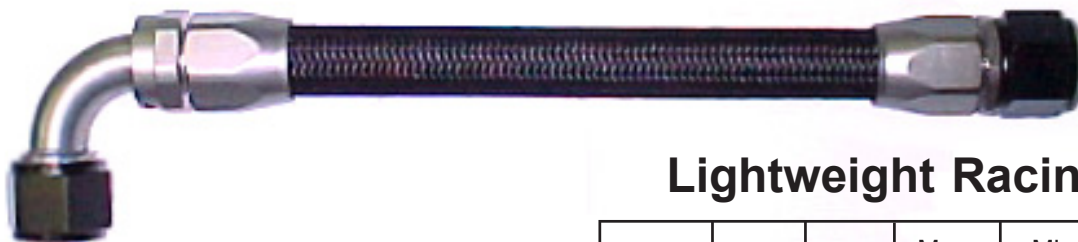
Aeroquip FC333 (stainless cover) 09/2022

Hose Size I.D.	Part #	Price \$ 1-14 foot	Price \$ 15-29 foot	Price \$ 30-49 foot	Price \$ 50 > foot
-4 (.22")	FC3-4	\$5.25	\$5.10	\$4.95	\$4.80
-6 (.34")	FC3-6	\$5.65	\$5.45	\$5.25	\$5.05
-8 (.44")	FC3-8	\$6.45	\$6.25	\$6.05	\$5.85
-10 (.56")	FC3-10	\$7.45	\$7.25	\$7.05	\$6.85
-12 (.69")	FC3-12	\$8.95	\$8.75	\$8.55	\$8.35
-16 (.88")	FC3-16	\$13.65	\$13.40	\$13.15	\$12.90
-20 (1.13")	FC3-20	\$23.55	\$23.30	\$23.05	\$22.80



We assemble custom hoses.
Call for quote.





Lightweight Racing Hose

Construction: smooth bore, lightweight synthetic rubber interior with (black) nylon woven overbraid

Application: For gasoline, diesel fuel, lubrication oils, and water. Suitable for most "taper" type hose ends.

Operating Temperature Range: -30° f to +300° f (-35° c to +150° c).

Part Number	Hose I.D. (inch)	Hose O.D. (inch)	Max. Oper. Pressure (psi)	Min. Burst Pressure (psi)	Min. Bend Radius (inch)	Vacuum Service (in/Hg)	Weight Per Foot (lbs.)
AHL-4	.225"	.44"	250	500	2.0"	27	.08
AHL-6	.350"	.55"	250	500	2.25"	27	.10
AHL-8	.445"	.65"	250	500	3.5"	27	.12
AHL-10	.565"	.80"	250	500	4.0"	27	.17
AHL-12	.695"	.94"	250	500	4.5"	27	.22
AHL-16	.880"	1.15"	250	500	5.5"	22	.28
AHL-20	1.13"	1.41"	200	400	8.0"	22	.32

Lightweight Hose Information

From the late 1990's on there has been an increasing call for lightweight hose. With this, many manufacturers have introduced new hose and fitting products. This is good news for sponsored racing teams (unlimited budgets) searching for something lighter/better, however, the cost of these products (often 2 to 5 times higher) put them out of reach for the average user. The other issue is the lack of compatibility between brands and systems - most require special equipment required for assembly. One of the few "compatible" products on the market is Aeroquip "Startlite" hose, which can be used either with "crimp" type or more common "taper-swivel" hose ends. Unfortunately the down side here is the price - again 2-3 times the price of typical stainless racing hose. With all this in mind, our latest hose product addresses the above issues and features; weight similar to the high dollar brands, compatibility with industry standard "taper-swivel" hose ends, and is easy to cut and assemble (no more bloody fingers) and all at a sensible price.

Internet Hose Pricing Specials

Below we have listed pricing on the popular hose types, and sizes, we normally stock. Pricing benefits purchasing in longer bulk lengths. Make sure to tell your sales associate you want our **"internet bulk hose"** pricing.

Lightweight Hose Pricing 9/2022

Hose Size I.D.	Part #	Price \$ 1-14 feet	Price \$ 15-29 feet	Price \$ 30 > feet	Price \$ 50 > foot
-4 (.22")	AHL-4	\$6.45	\$6.25	\$6.05	\$5.85
-6 (.35")	AHL-6	\$6.85	\$6.65	\$6.45	\$6.25
-8 (.44")	AHL-8	\$7.75	\$7.55	\$7.35	\$7.15
-10 (.56")	AHL-10	\$8.45	\$8.30	\$8.15	\$8.00
-12 (.69")	AHL-12	\$10.30	\$10.10	\$9.90	\$9.70
-16 (.88")	AHL-16	\$15.05	\$14.80	\$14.55	\$14.30
-20 (1.13")	AHL-20	\$24.70	\$24.45	\$24.20	\$23.95



We assemble custom hoses.
Call for quote.





Lightweight Fuel Specific Hose

Construction: smooth bore lightweight synthetic rubber interior with fluorocarbon based liner, single stainless braid reinforced, black nylon woven exterior w/blue trace.

Application: For gasoline, diesel fuel, bio-diesel, E85 and other ethanol based fuels Suitable for most "taper" type hose ends.

Operating Temperature Range: -30° f to +300° f (-35° c to +150° c).

Part Number	Hose I.D. (inch)	Hose O.D. (inch)	Max. Oper. Pressure (psi)	Min. Burst Pressure (psi)	Min. Bend Radius (inch)	Vacuum Service (in/Hg)	Weight Per Foot (lbs.)
						27	
AHL-6F	.350"	.55"	300	500	2.25"	27	.10
AHL-8F	.445"	.65"	300	500	3.5"	27	.12
AHL-10F	.565"	.80"	250	500	4.0"		.17

Fuel specific hose designed to handle modern fuels and high fuel system pressures. Hose incorporates a synthetic Fluorelastomer liner making it compatible with racing fuels as well as ethanol based fuels (E85 and higher percentages), diesel/bio-diesel. Incorporated liner protects against hose deterioration that leads to fuel permeation (gas smell) and dry hardened hose. Hose is finished in an attractive black nylon braid with blue trace.

- ◆ Certified for use with E-85, diesel, bio-diesel, ethanol and alcohol based-fuels
- ◆ Recommended for use in fuel-injection applications
- ◆ 4 ply light weight construction with a thin inner wall synthetic (Fluorelastomer) liner that protects against hose swelling and deformation at high temperatures.
- ◆ No more sour gas bleeding brittleness and premature degradation. Hose was developed and SAE tested to eliminate high levels of fuel permeation under extended and extreme conditions.
- ◆ 40% lighter than stainless braided racing hose.
- ◆ Hose is reinforced with a lightweight stainless steel braid for use in vacuum applications.
- ◆ Exceeded all SAE-30R9 tests for superior pressure tests, strength and support stability.
- ◆ AN compression style reusable fittings recommended. Not to be used with AN cutter style reusable fittings. Hose should not be submerged in fuel or used inside fuel tanks

Internet Hose Pricing Specials

Below we have listed pricing on the popular hose types, and sizes, we normally stock. Pricing benefits purchasing in longer bulk lengths. Make sure to tell your sales associate you want our **"internet bulk hose"** pricing.

Lightweight Fuel Specific Hose 9/2022

Hose Size I.D.	Part #	Price \$ 1-14 feet	Price \$ 15-29 feet	Price \$ 30 > feet	Price \$ 50 > foot
----------------	--------	--------------------	---------------------	--------------------	--------------------

-6 (.35")	AHL-6F	\$8.55	\$8.35	\$8.15	\$7.95
-8 (.44")	AHL-8F	\$9.70	\$9.45	\$9.20	\$8.95
-10 (.56")	AHL-10F	\$11.25	\$11.05	\$10.85	\$10.65



We assemble custom hoses.
Call for quote.





Aeroquip Startlite Racing Hose

Construction: AQP elastomer inner tube (black) Nomex/Kevlar weave cover w/red trace.

Application: For gasoline, diesel fuel, lubrication oils, and water. Suitable for most "taper" type hose ends.

Operating Temperature Range: -45 f to +300 f (-43 c to +150 c).

Part Number	Hose I.D. (inch)	Hose O.D. (inch)	Max. Oper. Pressure (psi)	Min. Burst Pressure (psi)	Min. Bend Radius (inch)	Vacuum Service (in/Hg)	Weight Per Foot (lbs.)
FBU400	.220"	.43"	200	400	2.0"	20	.05
FBU600	.350"	.55"	200	400	2.25"	20	.08
FBU800	.440"	.65"	200	400	3.5"	20	.09
FBU1000	.560"	.80"	200	400	4.0"	20	.14
FBU1200	.690"	.93"	200	400	4.5"	20	.16
FBU1600	.880"	1.15"	200	400	5.5"	20	.19
FBU2000	1.13"	1.41"	200	400	8.0"	20	.25

Startlite Hose Information

Aeroquip Startlite, being one of the first offerings in the lightweight hose market, is still one of the best. One of the few "compatible" products on the market is Aeroquip "Startlite" hose, which can be used either with newer "crimp" type, or more common "taper- swivel" hose ends. Aeroquip's popular lightweight racing hose is up to 45% lighter than steel braided hose and combines Aeroquip's patented elastomer smooth bore inner tube with a abrasion-resistant, fire-retardant Nomex/Kevlar® cover. Recent price reductions of up to 20% puts this pro-racer hose within the budget of average end users.

Internet Hose Pricing Specials

Below we have listed pricing on the popular hose types, and sizes, we normally stock. Pricing benefits purchasing in longer bulk lengths. Make sure to tell your sales associate you want our **"internet bulk hose"** pricing.

AQP Startlite Hose Pricing \$2022

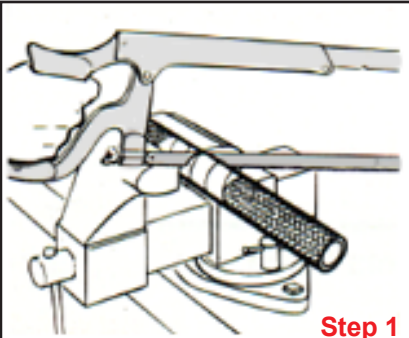
Hose Size I.D.	Part #	Price \$ 1-14 feet	Price \$ 15-29 feet	Price \$ 30 > feet
-4 (.22")	FBU0400	\$8.80	\$8.55	\$8.30
-6 (.35")	FBU0600	\$10.15	\$9.90	\$9.65
-8 (.44")	FBU0800	\$11.65	\$11.40	\$11.15
-10 (.56")	FBU1000	\$13.45	\$13.20	\$12.95
-12 (.69")	FBU1200	\$14.90	\$14.65	\$14.40
-16 (.88")	FBU1600	\$20.15	\$19.90	\$19.65
-20 (1.13")	FBU2000	\$25.75	\$25.50	\$25.25



We assemble custom hoses.
Call for quote.

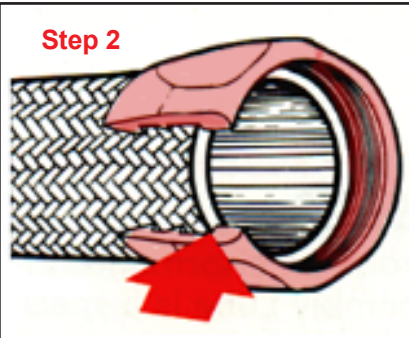


Braided Type AN Hose End Assembly



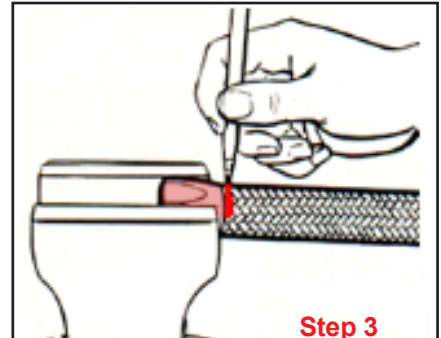
Step 1

Wrap hose tightly with tape at cutting point. Cut hose squarely to length using a fine tooth hacksaw, cable shears, or cut-off wheel. Remove tape being careful not to fray braid.



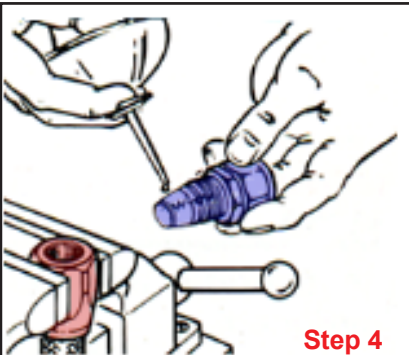
Step 2

Insert hose into socket with a twisting, pushing motion until the hose is positioned just short of where socket thread begins. It will be helpful to hold socket in a vice while inserting hose.



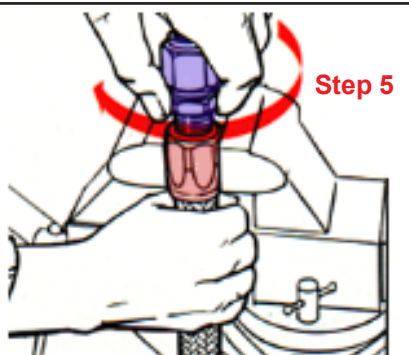
Step 3

It is important to mark hose at rear of socket with a marker or tape. This mark will later indicate if hose has "pushed out" during assembly.



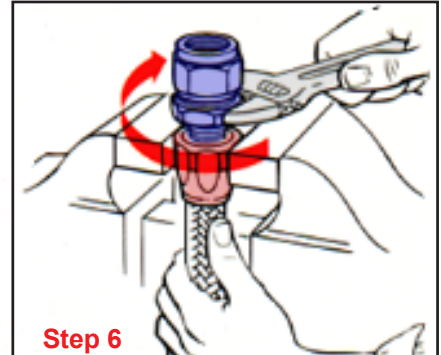
Step 4

Lubricate inside of hose and nipple thread liberally with S.A.E. 30 oil or specific hose assembly lube.



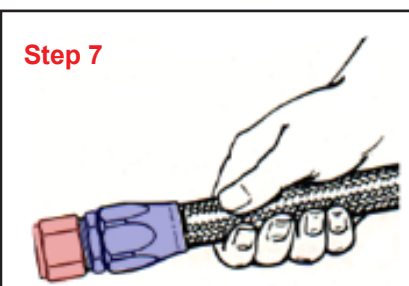
Step 5

Carefully insert nipple into socket with a turning motion to engage threads while holding hose with other hand. Make sure hose does not push out of socket end (observe mark made in **step 3**). Continue threading by hand as far as possible making sure threads are properly mated.



Step 6

Complete assembly using a wrench while holding the hose in position. When assembled a small gap of .030" or less should exist between socket and nipple shoulder. It is an option to hold the nipple in the vise turning the socket and hose portion on with a wrench.



Step 7

Check assembled fitting; observe mark made in step 3 for evidence of push out. If available, proof test assembly to twice operating pressure. Always check assembly for leakage under normal operating conditions.

Other Information:

Most manufacturers -AN type hose ends and braided hose conform to an industry standard and are generally interchangeable.

Be careful not to confuse types of braided hose. Hose with Teflon interior can only be used with TFE type hose fittings - not the usual red/blue aluminum variety detailed here. The TFE hose/fitting system is common in smaller i.d. -3AN and -4AN sizes used in high pressure applications; -6 and -8 sizes exist, but are less common.

Depending on brand, the nipple portion of hose end will commonly be either "taper" or "cutter" design - assembly is similar.



We assemble custom hoses.

Call for quote.

