



Right Fit. Real Impact. Delivered Fast.

REGIONAL RECRUITMENT

Specialist recruitment connecting growing
businesses with ambitious professionals.

Right Fit. Real Impact.

BUILDING STRONGER WORKFORCES

Connecting great people
with great businesses,
creating impact that lasts.



Table Of Contents

- 1 Who We Are
- 2 What We Do
- 3 Our Recruitment Process
- 4 Sectors
- 5 Engineering
- 6 IT
- 7 Construction
- 8 Industrial & Logistics
- 9 Commercial & Office Support
- 10 Our Partnership Approach
- 11 Contact Us



REC

Recruitment
& Employment
Confederation



WHO WE ARE

Building Teams That Drive Real Impact

We don't just fill roles, we create meaningful matches that drive performance, retention, and long-term growth.

Established in 2008, Regional Recruitment is an independent UK recruitment partner connecting ambitious people with growing businesses.

We've built a trusted reputation by focusing on what matters most: understanding your business, not just your vacancy, delivering quality without compromising on speed, and building long-term partnerships, not one-off placements.

Because recruitment isn't about transactions, it's about impact.

What Sets Us Apart

- **Speed With Purpose** - Fast delivery without compromising quality
- **Specialist Insight** - Deep understanding of your sector and roles
- **Outcome-driven Approach** - Focused on results, not activity
- **Long-term Thinking** - Prioritising retention and lasting impact
- **People-first Partnerships** - Relationship-led, not transactional
- **Transparent Communication** - Honest, clear, and consistent

We're not driven by volume; we're driven by outcomes. We deliver meaningful hires that create long-term value.

WHAT WE DO

Flexible Recruitment Solutions That Scale With Your Business

Delivering the right people, at the right time, without compromising on quality or compliance.

Permanent Recruitment

Securing high-quality, long-term hires aligned with your goals and culture.

Temporary & Contract Staffing

Fast, reliable workforce solutions to keep your business moving.

Specialist Hiring

Niche expertise that delivers better-fit candidates and stronger outcomes.

Why Business Trust Us to Deliver

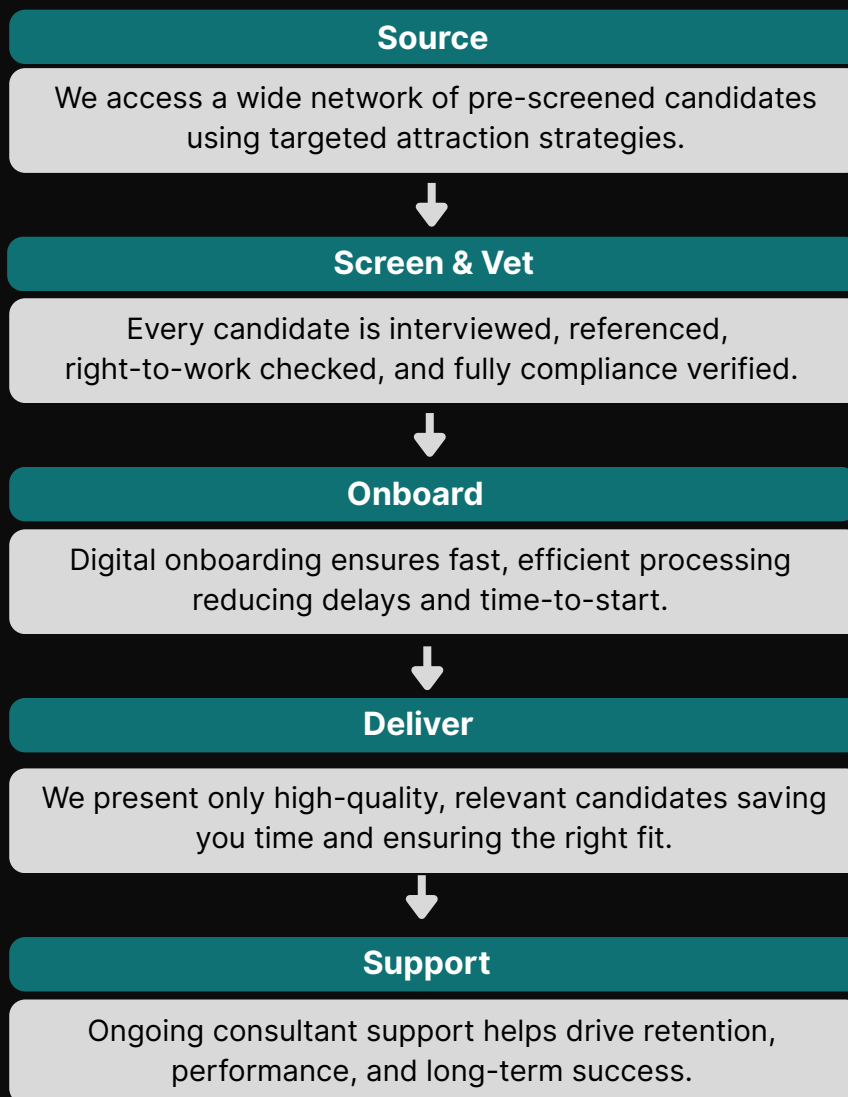
- 45,000+ pre-screened candidates ready to deploy
- Rapid digital onboarding for faster time-to-start
- UK-wide coverage with local branch support
- REC audited & GLAA licensed for full compliance

Trusted by businesses across the UK

“ The team handled our recruitment needs with **professionalism and efficiency**, quickly delivering a **high-quality candidate**. The service was **friendly, supportive, and seamless** from start to finish. We look forward to working with them again. ”

OUR RECRUITMENT PROCESS

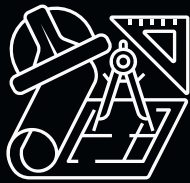
Our structured approach ensures every hire is fully vetted, compliant, and ready to contribute from day one. It is designed for speed, quality and compliance.



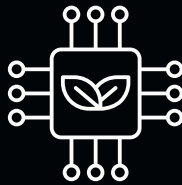
A streamlined process that delivers speed, quality, and complete compliance every time.

SPECIALIST SECTORS. ONE RECRUITMENT PARTNER.

We operate across defined specialist markets giving us the insight, network, and capability to deliver high-impact hires at speed.



Engineering



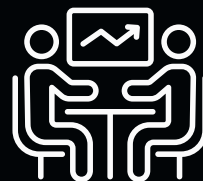
Tech



Construction



Industrial & Logistics



Commercial & Office Support

Many of our clients partner with us across multiple areas of their business, so we can support beyond a single function.

ENGINEERING EXPERTS

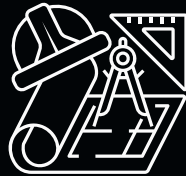
Engineering environments require skilled, reliable professionals where precision, performance, and technical expertise are critical to operational success.

We connect businesses with high-quality engineering professionals across multiple disciplines. With specialist understanding and targeted sourcing, we deliver candidates who support performance, efficiency, and long-term growth.

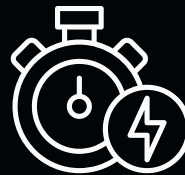
We Help You Manage



Shortages of skilled engineers



High competition for specialist talent



Critical project deadlines



The need for technical expertise and reliability

Specialist recruiters with **deep technical understanding**

Fast, efficient delivery for project-critical roles

Strong screening and vetting for quality and reliability

From hands-on technicians to experienced engineers and project specialists, we provide professionals who drive performance, efficiency, and innovation.

Roles We Cover

Maintenance & Service Engineers

Mechanical & Electrical Engineers

Technicians

CNC Operators

Manufacturing & Process Engineers

Design Engineers

CAD Technicians

More roles available across this sector

Engineering@regionalrecruitment.com

TECHNICAL EXPERTS

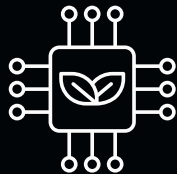
Technical environments require precision, specialist knowledge, and reliability where the wrong hire can impact delivery, performance, and growth.

We connect businesses with skilled technical professionals across a wide range of disciplines. With targeted sourcing and a deep understanding of technical skillsets, we deliver candidates who are capable, aligned, and ready to contribute from day one.

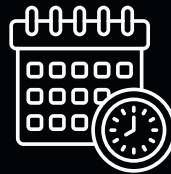
We Help You Manage



Skills shortages in specialist roles



Rapidly evolving technologies



Project-based hiring demands



The cost and risk of hiring the wrong candidate

Access to **specialist technical talent** across key disciplines

Targeted sourcing strategies to deliver niche skillsets

Fast, efficient delivery to meet project timelines

From infrastructure and support to development and data, we provide professionals who drive innovation and efficiency.

Roles We Cover

IT Support & Service Desk

Technical & IT Specialists

Infrastructure & Cloud Engineers

Software Developers

Data Analysts & BI Specialists

Systems & Network Administrators

More roles available across this sector

Tech@regionalrecruitment.com

CONSTRUCTION EXPERTS

Construction environments demand reliability, compliance, and speed where delays, labour shortages, and inefficiencies directly impact project delivery.

We supply skilled, reliable, and fully compliant workers who are ready to contribute from day one. With access to a strong network of trades and site professionals, we deliver workforce solutions quickly and efficiently.

We Help You Manage



Tight project deadlines and timelines



Skills shortages across trades



Site compliance and safety requirements



Fluctuating labour demands

Extensive network of skilled trades giving you a reliable workforce supply

Fully **compliant workforce** to reduce risk and provide peace of mind

Fast response capability to support urgent site requirements

From site labour to management and specialist trades, we provide reliable professionals who keep your projects moving.

Roles We Cover

Quantity Surveyors & Project Support

Groundworkers

General Site Staff

Plant Operators

Labourers & Skilled Trades

Site Supervisors & Managers

More roles available across this sector

Construction@regionalrecruitment.com

INDUSTRIAL & LOGISTICS EXPERTS

Industrial and logistics environments operate at a pace where delays, labour shortages, and inefficiencies directly impact output and performance.

We combine speed, scale, and structure to keep your operation running efficiently. With access to a large pre-qualified candidate network and targeted sourcing strategies, we deliver reliable workers quickly, consistently, and ready to contribute from day one.

We Help You Manage



Seasonal demand fluctuations



Workforce instability and absence



Tight dispatch deadlines



Labour shortages and high-volume ramp-ups

45,000+ pre-qualified candidates ready to deploy

Proven **high-volume** recruitment capability to scale with demand

Rapid digital onboarding for faster time-to-start

From entry-level operatives to supervisory roles, we deliver reliable workforce solutions that keep your operation moving and productive.

Roles We Cover

FLT Drivers (CB, Reach, VNA)

Line Leaders & Supervisors

Warehouse Operatives

Production Operatives

Pickers & Packers

Dispatch & Logistics Staff

More roles available across this sector

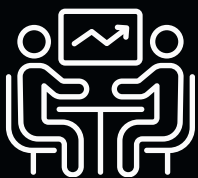
Industrial@regionalrecruitment.com

COMMERCIAL & SERVICE EXPERTS

Commercial teams are the backbone of successful businesses where efficiency, service, and reliability directly impact performance and growth.

We provide high-quality professionals who support your business across operations, service delivery, and growth. With a strong nationwide network and targeted sourcing strategies, we deliver candidates who add value from day one and contribute to long-term success.

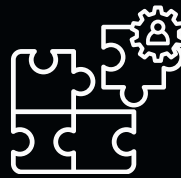
We Help You Manage



High turnover in support roles



Pressure to maintain service levels



Skills gaps across key business functions



The need for reliable, adaptable professionals

Nationwide candidate network giving you access to quality talent

Fast turnaround supporting urgent hiring needs

Focus on **long-term fit** for improved retention and performance

From entry-level support roles to experienced professionals, we provide talent that keeps your business running efficiently and growing sustainably.

Roles We Cover

Sales & Business Development

Accounts & Finance

Office Support & Administration

HR & Recruitment Coordination

Marketing & Communications

Customer Services

More roles available across this sector

Commercial@regionalrecruitment.com

OUR PARTNERSHIP APPROACH

How We Work With You



Insight: We proactively share market insight and talent availability to keep you informed and ahead of hiring challenges.



Delivery: We deliver high-quality candidates quickly and consistently focusing on relevance, fit, and long-term value.



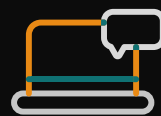
Understanding: We take time to understand your business, culture, and hiring goals ensuring every search is aligned from the start.



Communication: We communicate clearly and transparently at every stage so you always know where you stand.



Strategy: We build a tailored recruitment strategy designed around your specific requirements and workforce needs



Support: We provide ongoing support beyond placement helping to drive retention, performance, and long-term success.

We partner with your business to deliver recruitment solutions that drive performance, support growth, and create lasting impact.



Let's Build a Team That Drives **Your** **Business Forward**

Whether you need short-term support, long-term hires, or a recruitment partner across your business, we're ready to help.

A recruitment partner focused on results that last.



0116 262 3733



rrsmarketing@regionalrecruitment.com



www.regionalrecruitment.co.uk



Head Office: Leicester

Right Fit. Real Impact.