



System Specifications and Benefits

Performance	4-Color Digital utilizing LED Printhead technology		
Print Speed*	CMYK/Mono	Up to 50 ppm Letter, 27 ppm Tabloid	
	Time to First Page*	Approx. 8 seconds	
	Duty Cycle	300,000 pages per month	
Print Quality	Resolution	Up to 2400 Up to 1200 for PlateMaker 7®	
	Memory	RAM (Standard/Max) 2 GB Processor 1 GHz ARM CPU	
Compatibility	Printer Languages	Adobe® PostScript® 3™, PCL® 6, PCL 5c, XPS®	
	Connectivity	High-speed USB 2.0, 10 Base-T/100 Base-TX/1000 Base-T Ethernet	
	Operating Systems	Windows® 8, Windows 7, Windows Vista®, Windows XP, Windows Server 2012, Windows Server 2008, Windows Server 2008 R2, Windows Server 2003; Mac® OS 10.3.9 - 10.9	
	Network Protocols	TCP/IP, EtherTalk	
Media Handling	Media Sizes	Tabloid extra: 12" x 18" (305 mm x 457 mm), tabloid: 11" x 17" (279 mm x 432 mm), legal, letter, executive, 3" x 5" (76 mm x 127 mm) index cards, A3, A4, A5, A6, B5, C5, DL, Com 10, Monarch envelopes, banners up to 13" x 52" (330 mm x 1321 mm), and ALL Myriad 2® Plate sizes*; Duplexer: up to 13" x 18"	
	Media Weight	Trays 52-320gsm; Multi-Purpose Tray: 52-500gsm; Duplexer: 64gsm - 320gsm	
Media Capacity	Multi-purpose Tray	Up to 300 sheets	
	Trays 1	Up to 530 sheets	
	Input High Capacity Feeder	Up to 3500 sheets**	
Environmental	Size (WxDxH)	27.5" x 24.6" x 25.2" (699 mm x 625 mm x 640 mm)	
	Weight	257.9 lb. (117 kg) including consumables	
	Temperature/Humidity	50° - 90°F (10° - 32°C) / 20% - 80%RH	
	Power Consumption	Active: 1600W max. /1100W avg.; Standby: avg. 40W; PowerSave mode: 30W or less; Sleep mode: 4W or less; Auto Shutoff: 0.4W or less	
	Noise Levels	Active: 57dBA or less; Standby: 34dBA or less; PowerSave mode: Inaudible	
Workflow	iQueue Ultimate Multi-User Color Workflow with advanced color corrections and print management controls		
Warranty	Limited	1-Year; 5-Year Digital LED Printheads*	
Consumables	Toner Cartridges	Cyan (200-100357), Magenta (200-100358), Yellow (200-100359), Black (200-100360)	
	Image Drums	Cyan (200-100362), Magenta (200-100363), Yellow (200-100364), Black (200-100365)	
	Transfer Belt	200-100367	
	Fuser Unit 110v	200-100368	
	Fuser Unit 220v	200-100369	
	Waste Toner Box	200-100370	
	Myriad 2 Plates	10" x 15" (200-100050), 10" x 15 1/2" (200-100051), 10" x 16 1/2" (200-100066), 11" x 18" (200-100058), 11" x 18 1/2" (200-100076), 11 3/4" x 18 1/2" (200-100052), 11 3/4" x 19 1/8" (200-100053), 11 3/4" x 19 1/8" (200-100056), 12" x 18" (200-100054), 12" x 19 1/8" (200-100055), 12" x 19 1/8" (200-100057), 12" x 25" (200-100059), 13" x 19 1/8" (200-100060), 13" x 19 1/8" (200-100061), 13 3/8" x 19 1/8" (200-100082)	



xante.com
US: 251.473.6502 EU: +31 (0) 26.319.3210



©2017 Xanté Corporation. Xanté, the Xanté logo, HWC, iQueue and Right-On are registered trademarks of Xanté Corporation. Adobe and PostScript are registered trademarks of Adobe Systems, Inc. The Specifications listed here are subject to change without notice. *Call for details. **Input capacity varies with media weight.

11/27/2017



HEAVY STOCK DIGITAL PRINT SYSTEM WITH PlateMaker 7® TECHNOLOGY

- Heavy card stocks
Up to 500gsm (24 pt)
- Oversized Sheets
Up to 13" x 52"
(330 mm x 1321 mm)
- New HD Color / LED Printhead Technology
- High Resolution
Up to 2400
- Rapid Print Speeds
Up to 50 pages per min.
- Includes iQueue Ultimate Color Workflow



PlateMaker 7 Inside

WORKFLOW:

iQueue XI Digital Workflow

INTERNAL RIP:

Adobe® PostScript® 3™

XANTÉ PATENTED ACCURATE CALIBRATION TECHNOLOGY (X-ACT™):

Precise control over horizontal and vertical dimensions

LINESCREEN / RESOLUTION:

Up to 150+ LPI / 1200 DPI

PLATE RUN LENGTH:

>20,000 Impressions



Adobe® PostScript® 3™



iQueue



The HWC Heavyweight Champion Digital Print System lets you elevate your in-house printing capabilities from the expected to the extraordinary. The complete digital solution allows users to print on a wider variety of media including extremely thick card stocks, textured stocks and more. The system is driven by the iQueue Ultimate Color Workflow that provides advanced print management, patented color correction tools and new file editing / setup tools.

Versatile and affordable

Now you can afford to go digital and start meeting the demand for fast full color flyers, brochures, envelopes, mailers and cards. It also allows you to offer your customers additional print services like product packaging, P-O-P displays, table tents, door hangers, paper bags, menus, oversized banners (up to 13" x 52") and more.

The complete digital solution is driven by the iQueue Ultimate Color Workflow that's designed specifically for digital print systems. iQueue makes it easy to manage multiple digital files, make critical color adjustments, apply imposition, import variable data, estimate job costs and more.

Straight feed path provides more media options

The HWC Heavyweight Champion Digital Press features a unique straight media path design that allow users to feed extra heavy card stocks up to 500gsm (24 pt), textured stocks, most pre die-cut / perforated and even embossed blanks. All printed output is laser safe.



Front-accessible consumables make changing or replacing toner cartridges and image drums quick and easy.

LED printhead technology. Better color, better images

The HWC Heavyweight Champion Digital Press utilizes high definition LED printheads for superior images and stronger colors. Unlike traditional laser technology, there are no moving parts within the LED mechanism for greater reliability.



HD Color Printing technology

High Definition color is the standard for the HWC Heavyweight Champion Digital Press. HD Color renders deeper, more saturated colors, finer detail and more precise toner placement than ordinary color printers. This unique color process includes:

Multilevel LED printheads control the amount of toner applied to each dot, preserving fine image detail and maximizing color fidelity.

HD Microfine toner is engineered to ensure printed documents are sharp and crisp, with a high-quality finish.

Single Pass Color™ technology enhanced to improve color registration, regardless of paper type and weight, and provides better toner transfer across a wider range of media types.



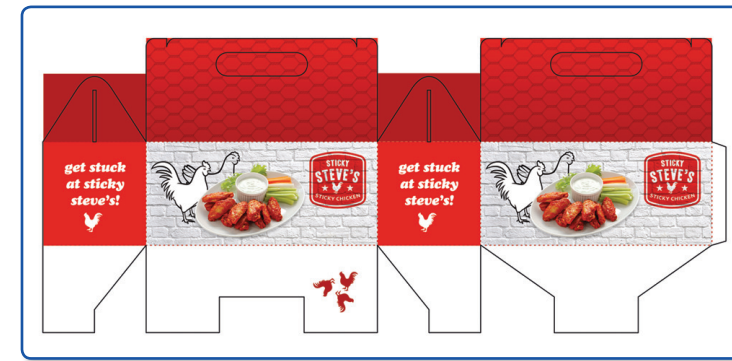
Product Packaging

Presentation and Custom Folders

Heavyweight Champion with High Capacity Production Feeder

Increased media capacity for up to 3500 sheets*.

*Input capacity varies with media weight.



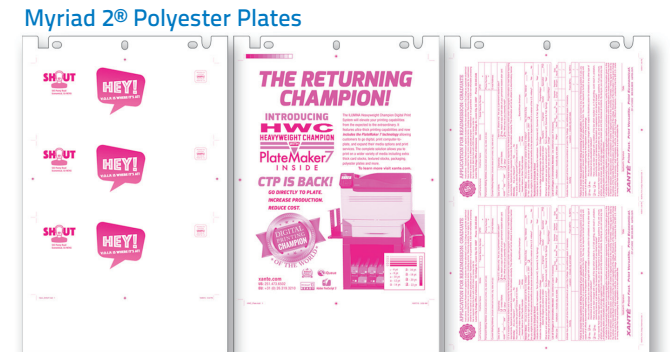
Food Packaging



Menus



Table Tents



Myriad 2® Polyester Plates



The HWC Heavyweight Champion with PlateMaker 7 CTP System is the affordable solution that allows you to produce high quality, high resolution polyester plates without processing or chemicals. The complete solution features the iQueue Ultimate Workflow that automates prepress production and streamlines the entire platemaking process.

Adobe® Postscript® 3™: True Adobe PostScript 3 offers reliability, increased performance, and the assurance of compatibility to work from virtually any software application and hardware environment.

Xanté Accurate Calibration Technology (X-Act™): Our patented Accurate Calibration Technology gives you precise control over horizontal and vertical dimensions on page images ensuring unmatched output accuracy.

Advanced Halftone Calibration: Now you can calibrate plate output to match production needs. Use the automated Quick Calibration, or the Advanced Calibration feature which allows you to fine tune the HWC Heavyweight Champion with PlateMaker 7 to your specific environment.

340MM Output Option: Provides the option to print a 13³/₈" wide plate. It also includes a Pinbar Alignment feature that allows users to print vertical lines at the top of each plate. This line can be used as an accurate guide when punching multiple plates in two and three-color jobs.

Chemical-Free, Process-Free: Non-Electrostatic Plates: Supports chemical-free plate making using Myriad 2 polyester plates, making computer to plate printing more cost effective and less time consuming.

PlateMaker 7 Specifications

Myriad 2 Plates	Available in the following sizes: 10" x 15", 10" x 15½", 10" x 16½", 11" x 18", 11" x 18½", 11¼" x 18½", 11¼" x 19³/₈", 11¼" x 19⁷/₈", 12" x 18", 12" x 19³/₈", 12" x 19⁷/₈", 12" x 25", 13" x 19³/₈", 13" x 19⁷/₈"
340mm Option	13 ³ / ₈ " x 19 ⁷ / ₈ " (340mm x 505mm)
Media Weights	4 mil plates - Plate Auto Loader
Noise Level	Printing - less than 49.5 dB; Standby - less than 35 dB
Printer Language	Adobe PostScript 3
Typefaces	136 resident PostScript Typefaces; TrueType® 42 font rasterizer; Types 1/3/4/5/6 PostScript download support
Interface	Simultaneously active - 10/100BaseT Ethernet® (EtherTalk®, TCP/IP, LPR, IPP)



©2016 Xanté Corporation. Xanté, the Xanté logo, Z17, iQueue and PlateMaker 7 are registered trademarks of Xanté Corporation. Adobe, PostScript and Clearly Adobe Imaging are registered trademarks of Adobe Systems, Inc. AGFA and the Agfa rhomb and Myriad 2 are trademarks of Agfa-Gevaert AG.