

PRIVATE TREATY

160 +/- ACRES
ELLIS COUNTY, KS



FOR MORE INFORMATION SCAN THE QR CODE TO BE DIRECTED
TO OUR WEBSITE



Legal Description

The Southwest Quarter (SW/4) of Section
Thirteen (13), Township Fifteen (15) South,
Range Seventeen (17) West of the 6th P.M. Ellis
County, Kansas.

FSA Information

156.99 Total Acres
153.64 Acres Cultivation
3.35 Acres unfenced waterways

Possession

40 +/- acres milo at the completion of the 2025 milo harvest.
113 +/- acres to be planted to wheat with possession at the
completion of the 2026 wheat harvest with Buyer to receive 1/3 of
the 2026 wheat delivered to an elevator in the buyer's name.

Taxes

To be Negotiated. 2024 taxes were \$362.48.

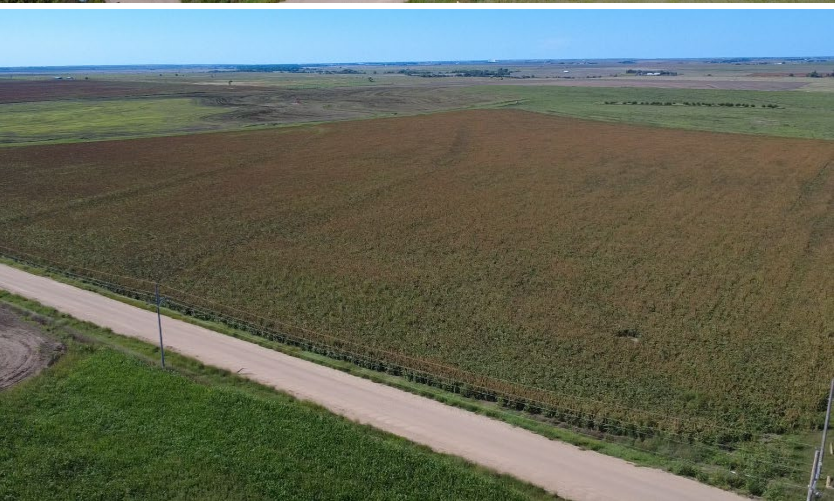
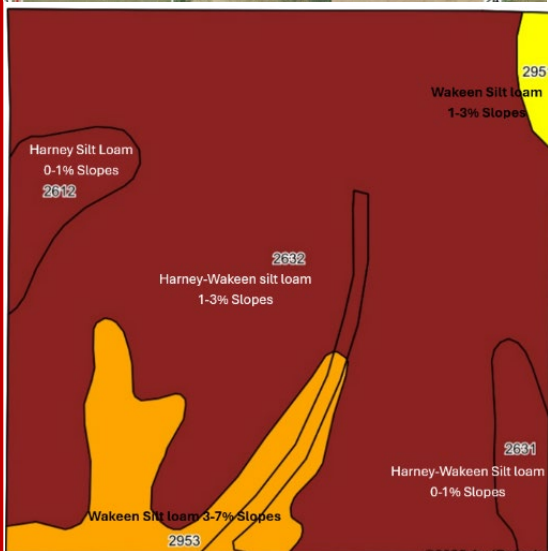
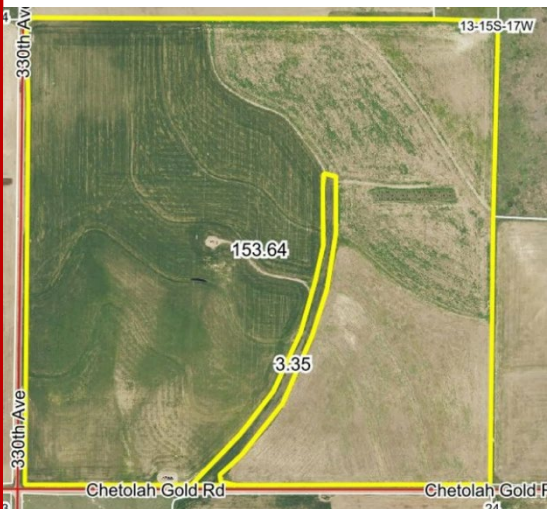
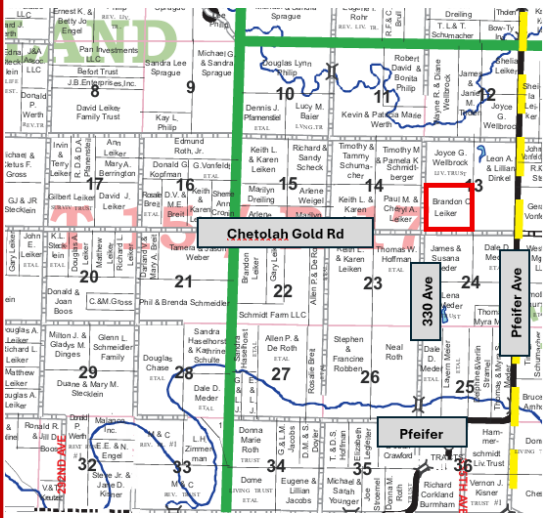
Minerals

Surface Rights Only

General Information

This is an excellent tract of primarily Class II & Class III Harney soils
with minimal slopes less than 3%. There are terraces and a waterway
to aid in proper drainage and minimize erosion. Access is good off
Chetolah Gold Road and ½ mile off a paved Pfeifer Avenue Road.
Income available off a 1/3 interest in a 2026 planted wheat crop.

Listing Agent: Roger Legleiter 785-623-8717



Farmland Auction & Realty Co., Inc

1390 E. 8th St., Unit A, Hays, Kansas 67601 ♦ (785) 628-2851 ♦ (888) 671-2851
E-Mail: farmland@farmlandauction.com ♦ Web: www.farmlandauction.com