



Family Service Center of Lowndes County

22 WASHINGTON STREET NORTH

HAYNEVILLE, AL 36040

(334) 548-6307



BUSINESS HOURS: MONDAY - FRIDAY 8:00 AM - 4:30

COMPUTER LAB HOURS: MONDAY - FRIDAY 8:00 AM - 4:00 PM

Visit our website: familyguidancecenter.org or Connect with us on Facebook.



SCAN ME!

LIFE SKILLS SEMINARS

Anger Management Class

Wednesday, January 14th & 28th

1:00 pm — 3:00 pm

*Four Week Class

*Certificates Provided

*Pre-registration is required

For more details, call

Brant McCray @ 334-548-6307

bmccray@familyguidancecenter.org

Parenting Education Class

Mondays, January 5th, 12th, & 26th

10:00 am — 11:30 am

*Seven Week Class

*Certificates Provided

*Pre-registration is required

For more details, call

Brant McCray @ 334-548-6307

bmccray@familyguidancecenter.org

Parenting Together Program

Offers intensive co-parenting services for mothers and fathers working together to nurture their children.

*Five Week Class

*Certificates Provided

*Pre-registration is required

For more details, call

Brant McCray @ 334-548-6307

bmccray@familyguidancecenter.org

Serving parents referred by Lowndes County District Court through the Access and Visitation Grant, administered by the Alabama Center for Dispute Resolution.

FAMILY ADVOCATE

Do You Need Help With...

Setting important goals for yourself or your family?

Staying focused on your plans for life?

Finding community resources to help your family

thrive? Some extra support & encouragement?

For more details, call Brant McCray

334-548-6307

bmccray@familyguidancecenter.org

PARENTING MATTERS

An advocacy program that assists men with fathering skills, life skills, job readiness and employment assistance.

For more information on the Fatherhood Program of the Family Guidance Center of Alabama, please contact us.

Jerry Claiborne @ (334) 270-4100

jclaiborne@familyguidancecenter.org

Ongoing help for fathers regarding child support and employment is available.



Funded by Alabama Dept. of Human Resources in partnership with the Dept. of Child Abuse and Neglect Prevention



January 2026

Happy New Year



TECH LAB NOW OPEN

COMPUTER LAB HOURS

ARE

MONDAY- FRIDAY

8:00 AM- 4:00 PM

WALLACE COMMUNITY COLLEGE

ADULT EDUCATION PROGRAM

Let us help you get your

GED/High School Diploma Option/HSDO

OPEN ENROLLMENT NOW!!

For more information, please call

Gwendolyn Cosby @ 334-548-6307

New Year Pop-Up Closet

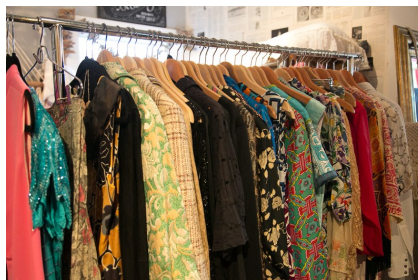
**Family Service Center
Friday, January 9th & 23rd**

10:00 AM – 1:00 PM

Join us for our New Year Pop-Up Closet featuring FREE gently used clothing for the whole family! We'll have a wide variety of items, including:

- ♦ Warm Coats
- ♦ Kids & Adult Clothing
- ♦ Shoes
- ♦ Accessories

Come see what we have and pick up some great items for the New Year. Everyone is welcome!



Mid-Alabama Coalition for the Homeless

If you are experiencing homelessness or know someone who is,

call @ **334-261-6182** for assistance!

Family Service Center of Lowndes County

Leading the Way to Ending Homelessness

In Mid-Alabama

www.midalhomeless.org

WORK READY!

Assists young adults, 17 - 24, who are out of school with identifying and getting started on a career plan. Serves young adults in Montgomery, Lowndes, Elmore and Autauga Counties
Call Jerry Claiborne for more details
334-270-4100

NEED CHILD CARE ASSISTANCE?

Information and application for child care assistance are available at:

Family Service Center, DHR Offices, and www.familyguidancecenter.org

CAREER WORKSHOPS

THE MONTGOMERY CAREER CENTER

CAN HELP YOU AT THE

FAMILY SERVICE CENTER

BY APPOINTMENT ONLY

CALL 334-548-6307 TO SCHEDULE AN APPOINTMENT

AlabamaWorks.Alabama.gov

Legal Services Alabama

HELPING LOW-INCOME INDIVIDUALS SOLVE LEGAL PROBLEMS
YOU MAY QUALIFY FOR LEGAL HELP. CALL OR COME SEE

PATRICK DOMAN @

FAMILY SERVICE CENTER

Monday, January 26th

@ 10:00am-12:00pm

Kids and Kin Program

A program for relative childcare providers

For more information,

call or email Angie Binion @ 334-465-0098
abinion@familyguidancecenter.org

Parenting Assistance Line 1-866-962-3030

& visit **alabamafamilycentral.com** for resources.

To receive the monthly calendar by email, contact Breonna at **bshuford@familyguidancecenter.org**