

ANNUAL REPORT **We Care Arts**



TOGETHER We Care

2025

Pictured on the cover:
Architect and sculptor Terry Welker
collaborates with artist-client Matthew G.
to create this artwork for the
Together We Care Auction.



A Collaborative Initiative Connecting Community Artists with We Care Arts' Artist-Clients



Michael Higgins and Elizabeth H.



Rachel K. and Michael Fabelo



Terry Hitt and Rebekah S.



Joanne Vincent and Jenn S.



Together We Care Artwork



Elisha Fronz and Aleisha C.

TABLE OF CONTENTS



*Employment Services Program
Retail Associate-Client, Suzanne K.*

Letter From The Leadership	4
Mission, Vision, Values	5
Who We Are And Who We Serve	6
By The Numbers	8
Strategic Plan Updates	9
ArtWorks and Employment Services	10
Outreach	11
Community Engagement	12
Community Support	14
Staff and Board	15
Supporters	16
Financial Overview	18
Accreditations and Affiliations	19

Leadership From Letter



Dear Partners, Donors, and Key Stakeholders,

Welcome to a look back at our 2025 journey.

This year, we hosted our very first Together We Care Gala. As you explore this report, you will see that this is more than a theme. It is the engine behind not only our survival, but our growth toward something stronger.

On our cover, you will find a stunning mobile created through a collaboration between architect and artist Terry Welker and artist-client Matthew G. It is a powerful reflection of We Care Arts. Each piece is unique, but it only finds balance and strength when connected to others.

This letter is our “we” statement.

For nearly 45 years, we have served as a trusted partner in the arts and disability space. What we have learned is simple. The only way to navigate uncertainty is together. Our mission remains clear: to empower healing through art and community. Because of your support, that mission is growing. Since the pandemic, we have increased our service hours by 50 percent and expanded our reach across the region. You have helped build something that is not only resilient, but deeply needed.

But numbers only tell part of the story. Theresa tells the rest. She is the author of Theresa’s Adventure and an artist-client who shares, in her own words, that We Care Arts is where she can “express how Cerebral Palsy ties into her artistic abilities.” Her story shared in this report and in her own words online is not just inspiring. It is a reminder of what is possible when someone is seen, supported, and given space to create. And because of your support, SHE IS NOT ALONE.

In 2025, we delivered 37,774 hours of programming, served more than 2,500 artist-clients across 42 locations, and achieved a 92 percent satisfaction rate. These are more than numbers. They are proof that this community trusts, values, and depends on this work.

Through ArtWORKS, our artists are not only creating, they are sharing their voice, earning income, and contributing to the cultural fabric of our community. From the Black and White Gala to the 3rd Annual Art Scramble, we saw what is possible when we truly build together.

And yet, we must speak plainly. We are not out of the woods. Since 2022, we have worked intentionally to rebuild from the challenges of the pandemic. Moving from a net loss to a modest positive financial position in 2025 is a meaningful milestone. It reflects discipline, commitment, and the strength of this community. But it is not our finish line.

Funding sources across the board are under strain. Public systems are tightening. Grants are becoming less certain. We have seen firsthand how quickly critical funding can disappear, and the people most affected are the ones we serve. For the 80+ percent of our artist-clients living at or below 250 percent of the poverty level, this is not about access to art. It is about access to connection, purpose, and stability. We have come too far together to lose that.

Your continued support ensures that when funding shifts, our services do not. It protects access, preserves dignity, and sustains the momentum we have built side by side.


Together, we are not just maintaining programs. We are building something lasting.

And that only works if we continue to show up for one another.

Together, we care. And together, we will continue building toward long-term sustainability.

For the artists—and the collaborative masterpiece we’re building together,


Katie Neubert, Executive Director


Heather Finlayson, Board President

P.S. Theresa found her voice here. So have thousands of others. With your continued support, thousands more will have that same opportunity. If you feel called, we invite you to give or begin a monthly gift today.

Mission, Vision, Values

Our Mission

We empower healing through art and community.

Our Vision

We believe in a future where people with diverse abilities can achieve their full potential and feel embraced by an inclusive society.

Our Values

Adaptability • Community • Integrity • Safety • Empathy • Vision • Mission

We Care Arts is excited to announce the remarkable recipients of the 2025 Mission, Vision, and Values Awards. These individuals exemplify a strong commitment to We Care Arts' core values:



Staff Appreciation

The staff at We Care Arts is truly something special. They show up every day with patience, compassion, and a genuine commitment to the people they serve—especially in moments that require extra care and sensitivity. You can feel the empathy in the way they work, creating a space that's safe, supportive, and welcoming. What they do changes lives, and it brings a sense of hope and strength to the entire community.



Who We Are & Who We Serve

We Care Arts (WCA) has been dedicated to supporting individuals with developmental disabilities, substance use disorders, and mental health diagnoses for more than four decades. **In 2025, they proudly served over 2,500 artist-clients across 42 service locations.**



80% of our Artist-Clients are below the 250% poverty level.

WCA offers art classes at no cost to the participants, held Monday through Friday from 9 AM to 12 PM and 1 PM to 4 PM, providing a nurturing environment where artistic expression becomes a catalyst for personal growth. Art serves as a powerful tool for healing, allowing individuals to explore emotions, communicate their thoughts, and build confidence by fostering decision-making skills and independence.

The programs are designed to help individuals find their unique voice and strengthen their sense of self. Everyone deserves this transformative experience, and the WCA team supports each participant's journey. Referrals to participate in WCA programs may come from a variety of professionals, including doctors, therapists, pastors, social workers, and counselors, ensuring a broad reach to those who can benefit from the services. Through art, WCA creates a community where healing and empowerment go hand in hand.



Become An Artist-Client



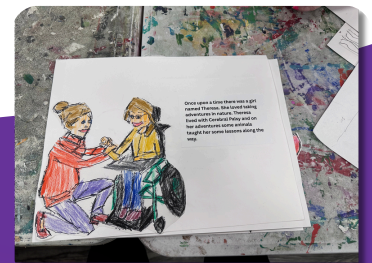
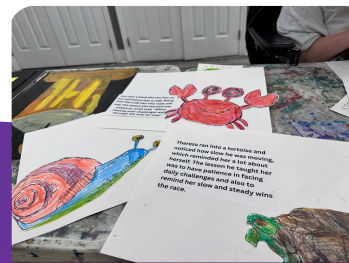


Artist-Client, Byron S.



Artist-Client, Maggie R.

“I like We Care Arts for the variety of art we are able to create and the friendly people.”
Artist-Client Eve I.



Meet The Artist-Client

Theresa S.

“We Care Arts is a place where I can express how Cerebral Palsy ties into my artistic abilities...”

Scan the QR Code to view Theresa discussing her book, “Theresa’s Adventure: How to Navigate Life with Cerebral Palsy.”



By The Numbers

2

0

2

5



2,526

Individuals
Impacted



37,774

Programming
Experience Hours



1.06M

TOTAL
REVENUE



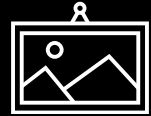
92%

ARTIST-CLIENT
SATISFACTION



2

NEW ENDOWED
SCHOLARSHIPS



318

ART SHOWCASED
IN COMMUNITY



42

SERVICE
LOCATIONS



26

SCHOOLS
SERVED



6

COUNTIES
SERVED



2,276

STORE
TOUCHPOINTS



7.8M

MEDIA
IMPRESSIONS



1,976

VOLUNTEER
HOURS

**Referenced financials are unaudited and subject to change pending the compilation of the upcoming annual audit.*

Strategic Plan Update



Artist-Client, Steven D.



Artist-Client, Angela S.



Artist-Client, Justin S.

“ I love to learn about art. We talk about different artists, like Vincent Van Gogh and Claude Monet. I have fun at We Care Arts. ”
Angela S.

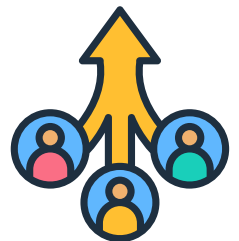
In 2024, We Care Arts did something both ambitious and necessary. We paused to listen. Through a year of engagement with artist-clients, staff, donors, and community leaders, one thing became clear: the future of this work must be shaped by the very people it serves and surrounds. With those voices guiding the way, our Board of Directors entered 2025 with clarity and conviction by formally



approving a new Strategic Plan for 2025 through 2030. Not just a plan for growth, but a shared commitment to strengthen sustainability, invest in people, and expand the reach of our mission. From the beginning, there was a clear intention to do this differently. This would not be a plan that is written, celebrated, and set aside. It would be a living framework, one that evolves as we learn and holds us accountable not only to our goals, but to the people behind them. To bring that vision into focus, the plan was organized around three core areas: Funding, Staff, and Mission Impact. Each area is grounded in clear objectives, from diversifying revenue and building the next generation of donors, to retaining and empowering staff, to deepening community connections and expanding access to our programs across the Greater Miami Valley.



This meant that **in 2025, the work deepened as focus shifted from vision to execution.** The Board committee collaborated with staff to align these objectives with measurable outcomes and Key Performance Indicators, ensuring that strategy is not abstract but embedded into daily work. This alignment is already shaping how we show up across our programs and partnerships. In our Mission Impact work, for example, a focused commitment to increasing community partnerships resulted in the expansion of our Outreach Programming from 23 service locations in 2024 to 42 in



2025. This kind of growth reflects more than scale. **It reflects intentional, strategic action.**



As a result, 2025 became a true foundation year. A year of building the systems to track progress, the tools to measure what matters, and the processes to clearly communicate our impact. More importantly, it marked the beginning of a culture of continuous improvement. One where we ask better questions, listen more closely, and move forward with purpose. Because the work ahead is important, **and together, we are building it with intention.**

ArtWorks

The We Care Arts ArtWorks program stands as the cornerstone of the organization, offering a rich, curriculum-based art education to the artist-clients. This program is designed to be inclusive and adaptable, providing both in-person and online platforms to cater to diverse needs and preferences. The artist-clients engage with a variety of mediums, including paint, clay, and wood, allowing them to explore their creativity and develop their artistic skills in a supportive environment. The ArtWorks program not only nurtures artistic talent but also facilitates personal growth and community engagement.

A unique aspect of the ArtWorks program is the opportunity for artist-clients to sell their creations. Eligible participants can showcase their work in the WCA gift shop, where they receive a portion of the profits from each sale. **In 2025, art sales reached an impressive \$29,000, reflecting the high quality and appeal of the artwork produced.** Additionally, our dedicated Art Curator plays a pivotal role in expanding the visibility of our artists by securing venues across the city, such as restaurants, libraries, and office buildings, to display their work.

The program's impact extends beyond individual achievements, as demonstrated by the success of our production class. This class has been commissioned to create bespoke artwork for prestigious clients like the **Boonshoft School of Medicine at Wright State and the YWCA.** Each piece is thoughtfully curated to complement the specific spaces, enhancing the aesthetic and cultural value of the environments. Through these collaborations, the ArtWorks program not only elevates the profiles of our artist-clients but also enriches the cultural fabric of our community.



Artist-Client, Shearon J.

Employment Services

The goal of We Care Arts Individual Employment Services Program is to promote growth and opportunity through employment for adults with disabilities. Participants enter our program with the end goal of competitive community employment within 1-2 years. The Sales Associate-Clients work at the We Care Arts gift shop located in the Town & Country Shopping Center and engage with job coaches through different activities to identify employment opportunities in the community. Participants enrolled in this program will receive support to build resumes and prepare for job interviews.

Join us in congratulating Sales-Associate client, Micah J. for graduating from the Employment Services Program in 2025!



Micah J. and Director of Programming, Carlette Jewell



Town & Country Shopping Center Gift Shop

Outreach

We Care Arts brings art's healing power to the community through Outreach Programming.

Recognized for its excellence, We Care Arts has received awards from The OAEA (Ohio Arts Education Association) for Distinguished Business for Art Education and The Eastway Community Partner Award for Partnership in Providing Outstanding Services to Our Adult Clients.

Collaborating with local organizations, WCA offers art classes at no cost to the participants, that inspire creativity, foster connection, and promote well-being. Each class includes all supplies, guided projects, and cleanup to ensure a smooth experience.

Some current outreach partners include:

- Daybreak
- Eastway Behavioral Healthcare
- Miracle Clubhouse
- YWCA Dayton

New Partners in 2025

- Alzheimer's Association
- Brigid's Path
- Broader Horizons
- Dayton Metro Library
- OneFifteen Recovery
- Piqua YMCA
- Safehaven



I'm so happy to be able to make art again and I'm overjoyed that everyone here is so kind.
Artist-Client from the Alzheimer's Association Memory Cafe

A key initiative is the Transition to Work (TTW) Program, offering 10 art projects over 10 weeks for Special Education programs in local schools, free of charge, thanks to grants and donations. Transition To Work is a state-established program designed to assist students with special needs, aged 16 to 22, in navigating the transition from high school to employment and independent living.

We Care Arts Served:

- 16 School Districts
- 26 Schools
- 995 Students



Centerville High School ITOP artist-clients

The year 2025 was a remarkable one for We Care Arts Community Engagement, filled with creativity, collaboration, and community spirit. Our events not only brought people together but also highlighted the incredible talents within our community. Here's a look back at the impactful events that defined our year.

Black & White Gala: Together We Care Initiative

Kicking off the year with our annual Black & White Gala in February, we introduced a new initiative titled **Together We Care**. This initiative paired community artists with We Care Arts' artist-clients to create collaborative artworks for the gala auction. These partnerships began in August 2024, allowing ample time for artists to work together and form meaningful connections.

The artwork was beautifully framed, thanks to the generous donations from **Custom Frame Services, DAS, and House of 10,000 Frames**. Our event was proudly sponsored by **CareSource**, with additional support from businesses and individuals who sponsored each artist pair, ensuring they had all necessary supplies. The project began at the first Arts & Jazz event in July, where artist pairs were announced and had the chance to meet for the first time amidst a day of jazz, art pop-ups, and community spirit.



Art instructor, Jenn Piasani painting the musicians during their performance.

Arts & Jazz: A Day of Creativity and Music

The Arts & Jazz event was a vibrant celebration featuring art sales and performances by The Sharp Thirteens, The Patricia Berg Trio, and the Kelli Campbell Quartet. The event brought together staff members, community artists, and vendors, setting a joyful tone for the collaborative spirit that would define the rest of the year.



Samantha Farkas and Angela S.



Todd S. and Hadley Rodebeck



Courtney Medlin and Debbie L.



Collaborative Artwork



Ron Rollins and Byron S.

Engagement



EVENTS



The **Evening at the Races**, presented by **Bockrath Flooring & Rugs and Tudor Financial**, was an exhilarating fundraiser that combined the thrill of horse racing with the charm of community engagement. This lively event features 10 exciting races where attendees can place their bets and cheer for their favorites. Guests explored the art pop-up shop, and participated in the auction of staff-designed piggy banks. Attendees also had the opportunity to win big in the 50/50 raffle, and other games of chance.

3rd Annual Art Scramble

In April, we hosted the 3rd Annual Art Scramble, a fun and dynamic team event where participants gathered supplies from various community locations to create unique artworks. This year, the coveted trophy, Artie S. Cramble, was designed by our very own Outreach Coordinator, Eylina Ogden. The event was sponsored by **Altafiber, Brixey & Meyer, and the Eagles 3925 Foundation**.

The winners named their creation, "Mosby".



Mosby

The Artie S. Cramble Award

Trunk or Treat

October brought the much-anticipated Trunk or Treat event, sponsored by **Molina Healthcare**. Our parking lot transformed into a Halloween wonderland, with over 25 cars ready to supply candy to more than 250 eager trunk-or-treaters. It was a delightful afternoon filled with costumes, laughter, and community engagement.



14th Annual Cookie Walk and Santa's Workshop

Rounding out the year was our 14th Annual Cookie Walk and Santa's Workshop, sponsored by **Routsong Funeral Home and Cremation Services**. This cherished event attracted community members eager to purchase cookies by the pound, thanks to generous donations from local bakeries and individuals. The festive atmosphere was perfect for kicking off the holiday season and brought joy to all who attended.



Community Support

We Care Arts is immensely grateful for the incredible dedication and generosity of their volunteers. Whether volunteers lend their time in the classroom, support during events, assist with administrative tasks, or help with light building maintenance, their contributions are invaluable. Their efforts enrich the community and make a significant impact on the mission. Those interested in joining the team of volunteers can scan the QR code to sign up and continue making a difference. Thank you for all that you do!



Volunteer, Karen Cowell and artist-clients, Angela S. and Julianna T.



Volunteer!



Judges for Art Scramble, Xavier Hershovitz Jessica Barry and Debbie Lieberman pictured with Executive Director, Katie Neubert



Dan Edwards and Doug Bockrath



Optimist Club Garden

The Optimist Club gathers monthly at We Care Arts and invites the artist-clients to become members.

They work on various projects to support the community.

Everyone is welcome to participate! Each year, they cultivate a garden on our patio, providing fresh vegetable for anyone to take and enjoy.

Artist Clients, Matthew G., Cynthia W., Betsy B., Lane A. and Optimist Club member, Shannon



Staff & Board Members

Leadership Board

Heather Finlayson, President
Devon Stinson, Vice President
Ed Kimmich, Treasurer
Andrea Price, Secretary



ED, **Katie Neubert**
and **Donna Berkeley**

Board Members

Allison Swanson
 Caprice Lambert
 Debbie Lieberman
 Jessica Jordan
 Kate Van Schaik
 Kevin Gray
 Michael Higgins
 Paul Gruner
 Samuel Routsong
 Sarvani Nicolosi
 Shannon Phelps
 Steve Niswonger
 Tami Kirby

Staff Leadership

Katie Neubert, Executive Director
 Carlette Jewell, Director of Programming
 Rick Willits, Director of Community Engagement
 Kelly Gibson, Director of Community Engagement
 Kimberly Hall, Director of Compliance and Facilities



Staff members, **Kelli Campbell**
and **Kimberly Hall**

Staff

Anna Brown
 Kelli Campbell
 Cassie Crownover
 Lora Damron
 Anthony Deitz
 Jay Engelman

Nicole Erickson
 Brandi Frederick
 Amanda Griffin
 Leesa A. Haapapuro
 Kimberly Hall
 Abigayle Hunter

Lacey Lantz
 Eylina Ogden
 Jenn Piasani
 Cara Stedman
 Bob Suchland
 Brenda L. Thieman

The annual board retreat offers members a wonderful opportunity to personally experience the transformative power of creating art. We Care Arts expresses deep gratitude to its board of directors for their invaluable service and unwavering dedication. Their leadership and commitment have played a crucial role in steering the organization toward success.



Back row, L-R - Paul Gruner, Shannon Phelps, Andrea Price, Samuel Routsong, Ed Kimmich, Steve Niswonger, Row two - Kate Van Schaik, Heather Finlayson, Tami Kirby, Allison Swanson, Kneeling - Devon Stinson, Jessica Jordan

Supporters

Endowed Scholarships

The Ronald Geibert Creative Edge Scholarship
The Douglas W. Baker Creative Edge Scholarship

Community pARTners

Bockrath Flooring & Rugs
Tudor Financial

Blue-Chip \$10,000+

CD Berry Foundation
Debbie & James Deuser
Donna Berkeley
Erin & Doug Bockrath
Fred & Alice Wallace Foundation
Mathile Family Foundation
Montgomery County Arts & Cultural
The Nick & Edna Weller Charities Inc.
OAC Sustainability
Old Scratch Pizza
Pat & Drew Brazie
Thomas Fordham Foundation

Curator \$5,000 - \$9,999

Berry Family Foundation
Brighter Tomorrow Foundation
CareSource Foundation
Elevar Fund
Elsa Heisel Sule Foundation
Good Shepherd Foundation of Ohio
Iddings Venevolent Trust
Lori Hausfeld
Physicians' Charitable Foundation
Premier Health
Tipp City Foundation
Virginia Kettering Fund
Yellow Springs Community Foundation

Patron \$2,500 - \$4,999

Anna & Allen Revels
Bank of America Charitable Foundation
Cole Family Foundation, Inc.
Community Foundation for Kettering
David Gasper
Dayton Rotary Club Foundation
Disability Foundation
Brenda & Ed Thieman
Fifth Third Bank
Heidelberg Distributors
Houser Asphalt
Kathryn Asbrock & Bill Vidourek
Kiwanis Club of Dayton Foundation
Routsong Funeral Home Inc.
Stan Hubbard
United Way of Cincinnati
Vicki & Dillard Moore
William Linesch

We sincerely apologize if we have overlooked acknowledging anyone's contribution. Your support is invaluable, and we deeply appreciate your dedication and generosity. Thank you for your understanding and for being an essential part of our mission.

Established Artist \$1,000 - \$2,499

African American Community Fund
Allison & David Swanson
Altafiber
Altrusa
Andrea & Gary Price
Ann & Anthony Morrissey
Bernice Stephen
Brixy & Meyer Community Outreach Fdtn
Carlette Jewell
Carolyn Haman
Centerville Noon Optimist
Cynthia & Howard Wingert
Davidson Outdoor Services LLC
Devon Stinson
Dorwood Optimist Club
Dr. Kathy Platoni & John Hutchinson
Good Shepherd Lutheran Church
Greene County Community Foundation
Hoffman Global Methodist Church
James Asbrock
Janice & Bruce Duke
Jill & Brian Kohr
Jim Schriener
Judith & Thomas Thompson
Kathryn & James Lange
Kathi & Paul Gruner
Katie & Shaun Neubert
Kettering Rotary Club Foundation
Kevin Gray
Kimberly Hall
Leslie & Vail Jr. Miller
Lexis Nexis Cares Grant
Lisa & Mark Saturno
Matt Scarr
Maureen & Tony Woltermann
Maureen & Fred Willits
Mike Houser
Mike Riordan
Molina Health Care
Pamela & Roger Bauser
Pamela Terzian
Patrick Reams
Peggy & James Lehner
Piqua Community Foundation
Pledgeling Foundation
PNC Foundation
Porter Wright Morris & Arthur LLP
Renee Lamont
Reynolds & Reynolds Foundation
Robert Montavon
Ronald Wagner
RTA/Regional Transit Authority
Stephanie & Matt Arntz
Stephanie & Mike Suttman
Tamara Moehl
Tammy & Mark Deddens
Terry Schalnat
The Eagles Foundation #3925
UW of Miami County
Warren & Jean Webster Family Fund

Emerging Artist \$500 - \$999

A3L Landscape Group
Amy & Ron Rollins
Ann & Richard Heiser
Anne & Daniel Davis
Anne & Mike Cornell
Beverly McCurdy Orf
Blue Coral Creative
Chapel Electric Co. Inc.
Christina & Curtis Corba
Dayton Children's Hospital
Diane & Stephen Kimpel
East Dayton Optimist Club
Edward Kimmich
Erin Bockrath
Faith Evangelical Lutheran Church
Farmer's & Merchant's Bank
First Financial Bank
First Presbyterian Church
Front Street
Holly Studebaker
Hugh F. Mulzac
Jessica & Doug Barry
Jillian Sacha
Joan & Tony Klepacz
Jon Vincent
Kathleen Carlson
Kia of Beaver Creek
Kimberly Bramlage
King Orthodontics Inc
Korrek Plumbing
Larry Welin
Linda Colvin
Lisa Becker
LWC Inc.
Margie & Jeff Morrison
Marilynn Rauch
Mary Cummins Wlodarski
Mary Gaier
McAfee Family Trust
Montgomery County Commissioners Office
P & R Communications Services Inc
PayPal Giving Fund
Poelking Chiropractic
Power Athlete
PuroClean
Rajan Chari
Ritz Safety
Ruoff Mortgage
Shannon Phelps
Slider's Tavern
Sue & Richard Armstrong
Susan & Richard Boesch
Tami Kirby
Thrivent Financial
Twentig Inc
Uhl Agency, The
United Way of Greater Dayton Area
Vitis Technologies
William Thurman II
Wolf Creek Portable Piping Products
Xpert Roofing

Apprentice \$100 – \$499

Adam Manning
 Adriane Miller
 Allison Swanson
 American Online Giving
 Amy & John Schrimpf
 Ann & Robert Walters
 Anna Marie Bowers
 Annette Klausing
 Anmarie Kuffer
 Anthony Massoud
 April & Jon Hale
 Barbara Schildman
 Bil Tipton
 Brooke & Matt Purpus
 Bryan Suddith
 Brydgett Lair
 Caprice Lambert
 Carmela Dixon
 Carol Oneal
 Carolyn Rath
 Carroll & John Schleppe
 Cassie Barlow
 Cassie Crownover
 Cathy Burgess
 Cheryl Shoemaker
 Christina & Barry Kreger
 Christine Bohmer Stewart
 Christopher Schalnat
 Clara Reigelsperger
 Courtney Geibert
 Dawn Kirchner
 Debbie & Christopher Danis
 Debbie Janson
 Debbie Lieberman
 Denise Willits
 Digestive Specialists
 Donna Parkinson
 Dorwood Optimist Club
 Dot's Market
 Dwight Leach
 Elements IV Interiors
 Elisha Frontz
 Elizabeth Martinson
 Eudora Brewing Co
 Frances & Tom Bankston
 Grace Stacy
 Hearthstone Psychology
 Heartland Insurance Group
 Heather Finlayson
 Heidi Riess
 Helen & Gerald Haun
 Holly Hornbeak
 Holly Protsman
 I AM MINISTRIES
 Jacquelyn & Gary Wick
 James Keighley
 James Lange
 James Schriener
 Jamie Owens
 Jamie's Tire & Service
 Janet Labatzky
 Jean A. Mahan
 Jeffrey McDowell
 Jennifer Devilliss
 Jessica Jordan
 Jessica Sullivan
 Jetpack
 Jim Porter
 Jimmy John's
 Joan & Albert Schneider
 Joanne Haley
 Johanna Hartley
 John Erickson
 Judy Brunke
 Judy Moehl
 Julianna Johns
 Julie & Bill Lautar
 Julie & Jeffery Stoller
 Kamarr Gage
 Kathleen Land
 Katie Van Schaik
 Kelley King
 Kelsey Wolford
 Kimber Wells
 Kristen & Scott Kayser
 Kroger Community Rewards Program
 Leana Stacy
 Lenise & Lawrence Knight
 Lesley Brose
 Level MB Construction
 Linda & Ron Armstrong
 Linda & Vasil George
 Linda Groover
 Linda Patten
 Madonna & Keith Harvey
 Marcie Hunnicutt
 Mark Levy
 Mark Wells
 Marla Vichich
 Marti Goetz, PhD
 Mary Beth Sheleman
 Mary Ellen Pechie
 Mary Warbutton
 Marynel & William Bradley
 Matt Greeson
 McAfee HVAC/Plumbing
 Meijer Community Support
 Micah Karr
 Michael Higgins
 Nathan Reiter
 Patrick Erwin
 Peter Schmidt
 Randolph Rowe
 Redline Motorworks
 Rick Willits
 Roberta & Grant Donaldson
 Robin Jones
 Ron Schalnat
 Ronald Duckson
 Sara & Richard Eppley
 Sarah Wrona
 Sandra W. Talley
 Scott Sapita
 Shane & Jessie Sullivan
 Sharon & Pete Wartinger
 Shelly Blanton
 Shirley Dillion
 Signarama
 Stephen Scherrer
 Steve Niswonger
 Sue & Ron Labatzky
 Sue & Terry Harbaugh
 Susan & Doug Clark
 Suzie & Steve Groves
 Teresa Hernandez
 Teresa Scheper & Nancy Rauch
 The Davis Group
 The Medicare Connection
 The Modern College of Design
 The Rubi Girls
 The Westheimer Group
 Thomas Young
 Tim Lile
 Traci Koepfer

Creative Spark up to \$99

Angie Morris
 Ann Smith
 Barbara Farris
 Barbara Ryan
 Belinda Burns
 Bill Glasser
 Bill Gruner
 Brandi Frederick
 Cameron Goschinski
 Carol Sears
 Carole Wudke
 Carolyn Stefanik
 Celine & Jim Burnett
 Centerville Womens Civic Club
 Chad Horn
 Charles Demidovich
 Cheryl Ryan
 Chrissy Israel
 Connie & Robert Wade
 Crystal Allen
 Cynthia Walker
 David Gifford
 David Willits
 Debra Stewart
 Derek Willits
 Dolores & Richard Wiegand
 Dorothy Lane Market
 Dwight Bartlett
 Emily Willits
 Fran Eden
 Frances Montgomery
 Gena Douglas
 Gerald Croop
 Howard Fogt Jr.
 Howard Winfield
 Jacqueline Milling
 Jaime & Susan Pacheco
 Janet Hegwood
 Janice & Michael Harris
 Jacque Fisher
 Jean Patrouch
 Jennifer & Kyle Kirts
 Jesse Lipson
 Judith Willen
 Julie Westwood
 Katherine Faulkner
 Kathryn Brandt
 Kathy Land
 Kelly Hemmert
 Kelsey Paul
 Ken Hippner
 Kery Gray
 Krissy Day
 Lane Andrianoff
 Lauren Fritz
 Leslie Willits
 Lindsey Kathmann
 Lisa & Mark Isseemann
 Lori Daugherty
 Lucas Lantz
 Lynn Eutsler
 Makaila Saylor
 Margaret Buckle
 Margery Ziegenbusch
 Mark Jones
 Mark Schwieterman
 Marlene Foley
 Mary & Joseph Heider
 Mary A. Parts
 Melissa Ballwrg
 Michael Hallock
 Michelle Sherman
 Missy Mae Walters
 Nathan Stevens
 Nicole Ard
 Nicole Erickson
 Patricia Zehringer
 Peg Schultz
 Penni & Thomas Meyer
 Randy Demidovich
 Richard Botschner
 Ronald Beals
 Ruth Schock
 Sharon & Grant Carter
 Sharon Lahm
 Shirley & Joseph Minham
 Sonia & Cliff McDowell
 Susan Ahola
 Suzette & Roger Hartmann
 Teresa White
 Timothy Armstrong
 Todd (Clifton) Smith
 Tonya Krynzal
 Vanessa & James Gibson
 Wendy Meador
 William Crawford

Tribute Gifts

In Memory Of

Elyse Abraham-Linesch
 Joyce Conner
 Beverly Frankenfeld
 Marcia & Richard Hartmann
 Gary Johns
 Charlie Klausing
 Grace McDowell
 David Maxwell
 Thomas J. Rauch
 Roger Schalnat
 Caroly Seger
 Mildred (Erickson) Svanich
 Leo Thieman
 Emily Treutle
 Ella Yoekel

In Honor Of

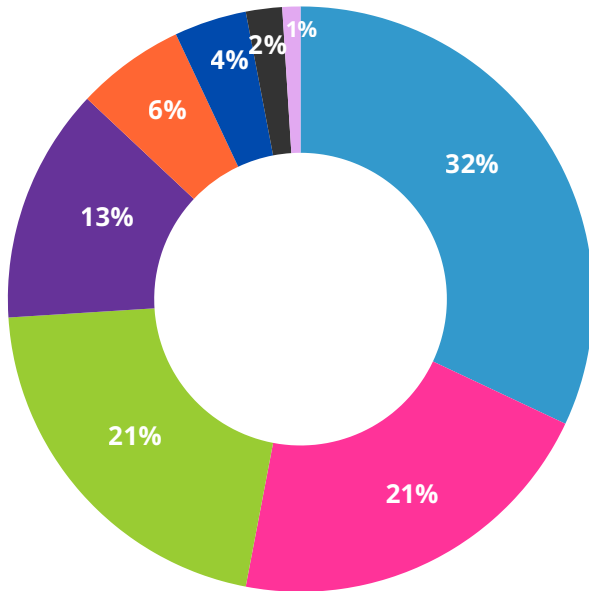
Betsy B.
 Lisa C.
 Nancy Duckson
 Carli I.
 Sefanie K.
 Debbie L.



Thomas J. Rauch

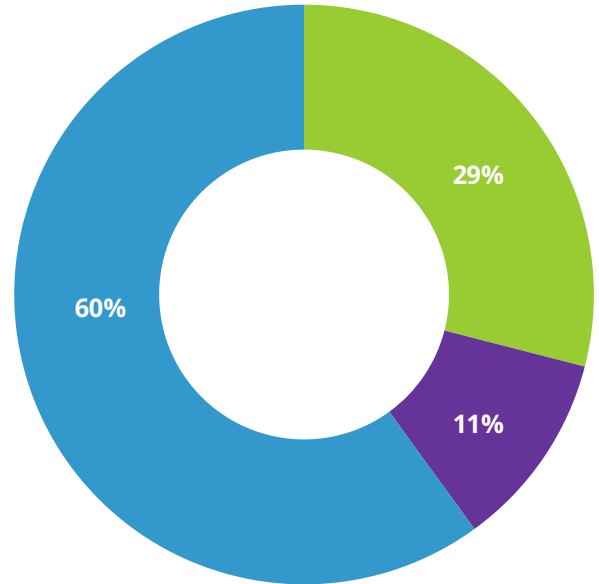
Financial Overview

Income



- Contract Services
- Contributions
- Grants
- Fundraising
- Outreach
- Investments
- Sales
- Gifts In Kind

Expenses



- Programming
- Administrative
- Fundraising

**Referenced financials are unaudited and subject to change pending the completion of the upcoming annual audit.*

Meet The Artist-Client

Lana T.

"Art is medicine, being creative is healing, it's medicinal. It has a physical impact on the body. It has a physical impact on the mind, and I can't thank you enough for putting this place here for me."



Scan the QR Code to view Lana's Donor Night Speech



Lana's artwork showcased at Dayton Society of Artist (DSA) exhibit.

Accreditations & Affiliations



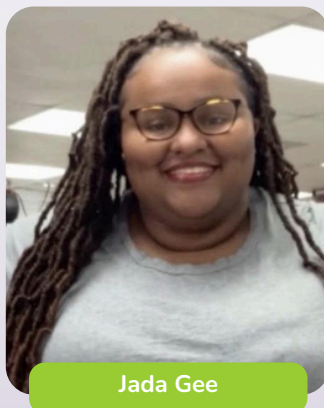
Investing In the Next Generation

In 2025, We Care Arts was supported by a dedicated group of interns. Among them, Issa Munoz-Chan—a photographer and graphic designer from The Modern College of Design—documented the artist-clients at work. His images vividly illustrate the spirit and impact of the program.

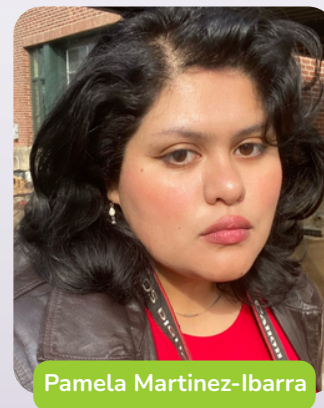
Pamela Martinez-Ibarra and Jada Gee both contributed their time and energy to the Programming department at We Care Arts, helping to strengthen and support the experiences offered every day. Each shared their unique talents to enhance the lives of the organization's artist-clients.



Issa Munoz-Chan



Jada Gee



Pamela Martinez-Ibarra



3035 Wilmington Pike
Kettering, OH 45429

RETURN SERVICE REQUESTED

NON-PROFIT ORG.
U.S. POSTAGE PAID
DAYTON, OH
PERMIT NO. 855



Save The Date

- JULY 25TH**
- ARTS & JAZZ
- SEPTEMBER 19TH**
- ART SCRAMBLE
- OCTOBER 24TH**
- TRUNK OR TREAT
- NOVEMBER 24TH**
- DONOR NIGHT
- DECEMBER 12TH**
- COOKIE WALK & SANTA'S WORKSHOP
- FEBRUARY 26TH - 2027**
- TOGETHER WE CARE GALA



Scan To See Events!



EIN 31-1295721

Follow Us!



[Linktr.ee/WeCareArts](https://linktr.ee/WeCareArts)



Artist-Client Michelle G.