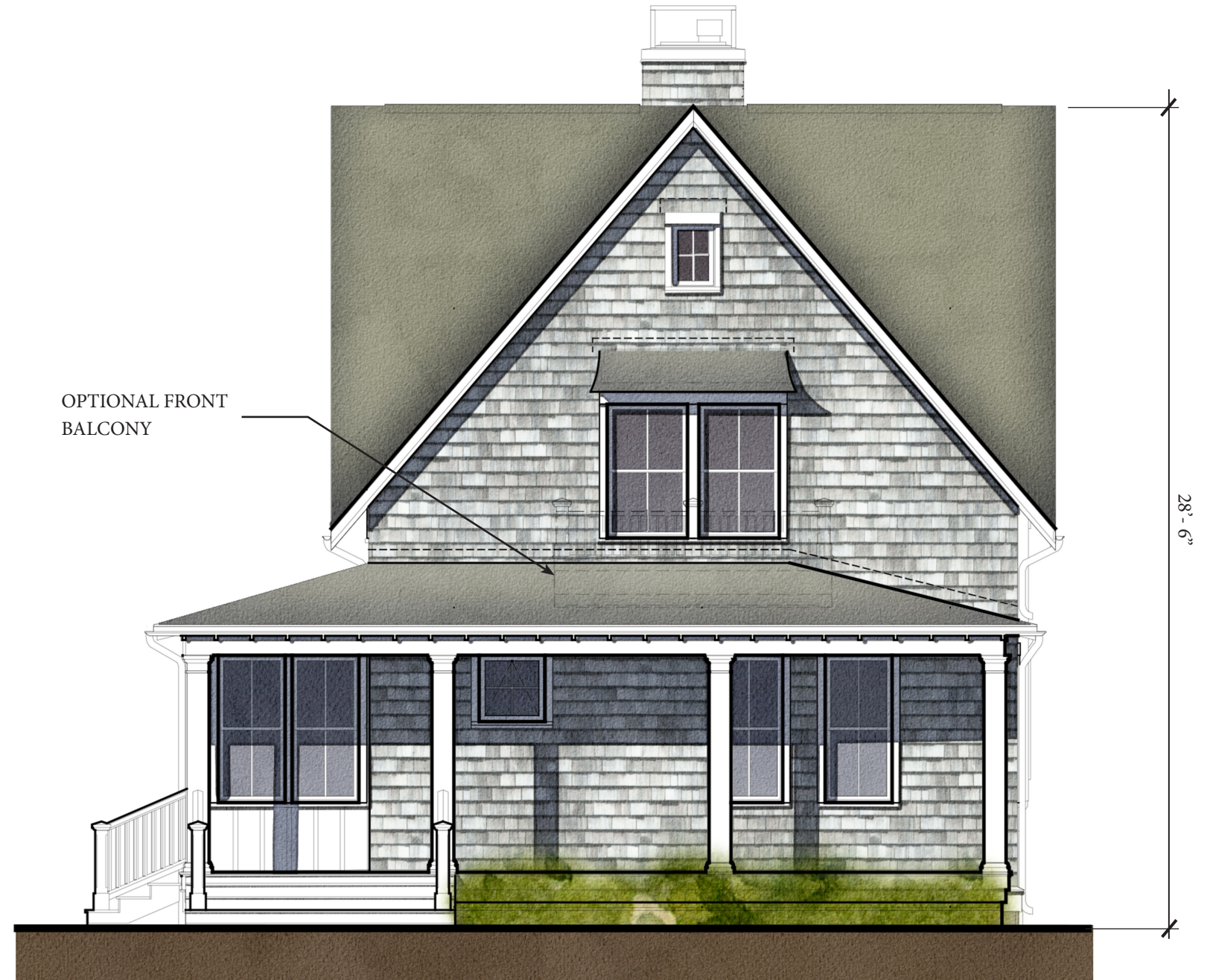


NAUSHON

2,407 SQUARE FEET
3 BEDROOM, 3 1/2 BATH
WIDTH: 31'-0", DEPTH: 52'-10"

THE NAUSHON. FEATURING 3 BEDROOMS AND 3 1/2 BATHROOMS, OFFERING OVER 2,400 SQUARE FEET OF LIVING SPACE, THE NAUSHON IS THE FLAGSHIP OF THE HOMES AT LAGOON RIDGE. A GRAND, COVERED WRAP-AROUND PORCH AT THE FRONT OF THE HOME HEIGHTENS ONE'S SENSE OF ARRIVAL AND PROVIDES THE PERFECT SETTING FOR ENJOYING THOSE COOL SUMMER BREEZES AND REFRESHING MORNING AIR. THE NAUSHON LEVERAGES A SMART AND EFFICIENT FLOOR PLAN THAT CONNECTS ITS CHEF'S KITCHEN TO LIVING AND DINING AREAS TO FORM A GENEROUS SPACE FOR HOSTING LARGE GATHERINGS OF FAMILY AND FRIENDS WHERE LIFE-LONG MEMORIES WILL BE MADE. ALL THREE-BEDROOM SUITES FEATURE TILED ENSUITE BATHROOMS WITH QUARTZ SURFACES, KOHLER FIXTURES, AND SPACIOUS CLOSETS, WHILE THE NAUSHON'S SECOND FLOOR BEDROOM SUITES OFFER THE OPTION FOR PRIVATE BALCONIES. THE NAUSHON'S CLASSIC LINES PAY HOMAGE TO THE COTTAGE HISTORY OF OAK BLUFFS WHILE OFFERING ALL OF THE BENEFITS OF MODERN TECHNOLOGY AND COMFORT. THE NAUSHON IS THE REALIZATION OF YOUR ISLAND DREAM.



OPTIONAL FRONT
BALCONY

FRONT ELEVATION

SCALE: 3/16"=1'-0"



NOTE: RENDERINGS ARE ILLUSTRATIVE ONLY.
MAY INCLUDE OPTIONAL UPGRADES.

LAGOON RIDGE

NAUSHON SCHEMATIC DESIGN

