



# Building Limitless Connectivity for Modern Data Networks



Since 2009, **National Technologies (NTI)**, a Network Connex Company, has kept data centers and fiber optic networks running with innovative infrastructure design, installation, and maintenance services. The industry's most technically proficient fit-out crews make critical connections for optimal reliability and future growth. With 24/7 support and turnkey services available nationwide and beyond, NTI is there where and when you need us.



“ From the very beginning, the crew demonstrated a high level of professionalism in their approach. They were prompt, organized, and efficient, ensuring that everything was set up seamlessly. Throughout the project, they exhibited excellent communication skills, keeping me informed of the progress and any potential updates. ”

— EDGE PROJECT LEAD, GLOBAL CLOUD PROVIDER



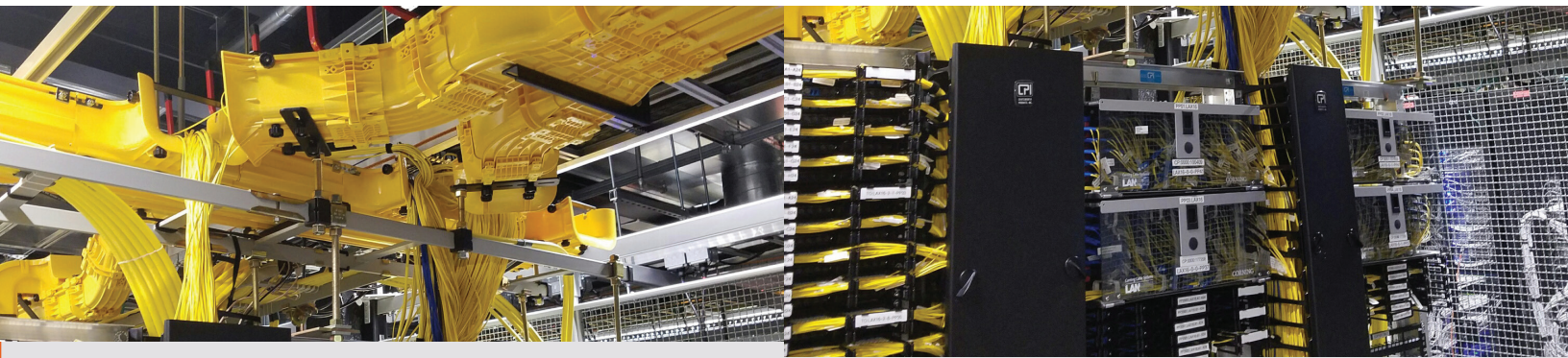
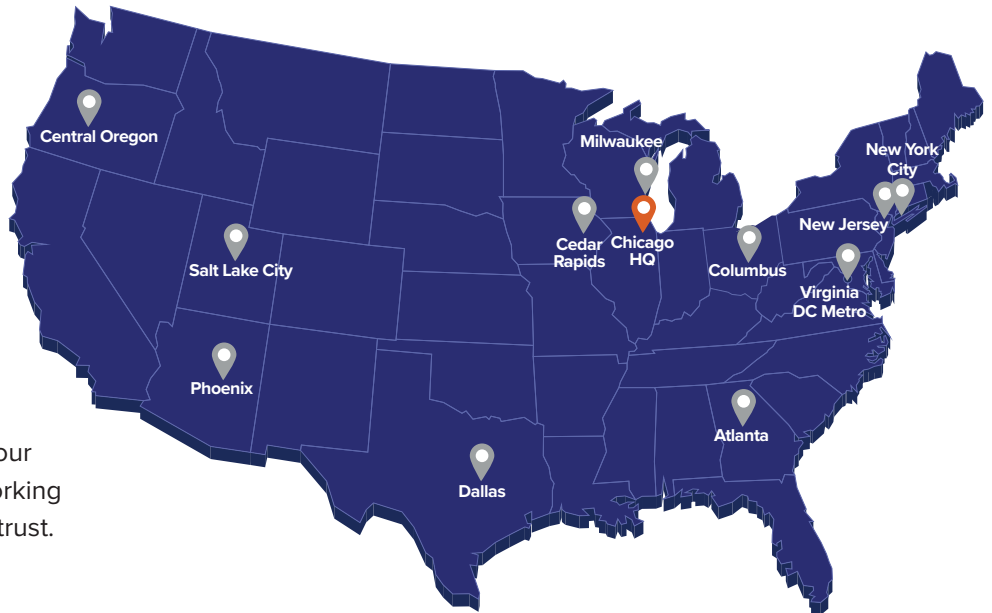
## Expertise for Every Network Project

Offering a full range of turnkey solutions and individual digital infrastructure services, NTI adapts to each unique scope, environment, and timeline. Our capabilities include:

- Data center fit-out and core infrastructure
- OSP/ISP fiber placement, splicing, & testing
- Structured cabling systems
- Distributed antenna systems (DAS)
- Advanced infrastructure design, engineering, and BIM coordination
- Emergency restoration and ongoing maintenance

## Depend on Experience & Reach

Since 2009, NTI has built teams in all major markets to deliver unrivaled customer service and nationwide coordination. Dedicated and specialized travel teams are available for projects outside of our local markets or beyond US borders. Strong financial stability and a continuously growing footprint assure our customers and partners that they're working with an infrastructure partner they can trust.



## High Safety, Low Risk

Our culture of safety is built on a mission to relentlessly eliminate risks through ongoing training, thorough communication, and proven practices. As a result, our Experience Modification Rate (EMR) is consistently much lower than the industry average. By putting safety first, NTI delivers peace of mind and a competitive edge.

## Consistently Low EMR

2025 **.67**

2024 **.66**

2023 **.76**

# The NTI Difference

Modern network builds demand a specialized infrastructure contractor who consistently inspires trust and delivers quality. Over 15+ years in the data center and fiber business, NTI has built a reputation for:



Expert project management and on-the-fly problem solving



"Done right the first time" commitment



Reliable rapid response



A culture of safety that protects people, property, environment



Skilled IBEW union workers



Continuous learning to leverage the latest innovations

## Our Capabilities

### Data Center Solutions

- White space buildout
- Overhead basket tray, ladder rack, fiber tray
- Cabinet & rack installation
- Core infrastructure components
- Fiber cross connects, splicing, & testing
- Backbone & structured cabling
- Cold/hot aisle containment
- Cage walls & raised access flooring
- Rack & stack equipment installation
- Network installation
- Grounding & bonding services
- AC/DC power systems
- Access control biometric and card reader systems
- Security cabling & device installation

### Fiber Solutions

- OSP/ISP fiber optic fusion splicing
- High fiber count mass fusion ribbon splicing
- OTDR & IOLM testing
- Power meter testing
- Fiber characterization testing
- Documentation & troubleshooting
- OSP/ISP Fiber cable installation
- Aerial and underground fiber placement
- Routine fiber maintenance
- Network expansion
- Emergency restoration with 24/7/365 support

### Professional Services

- OSP/ISP fiber network design & engineering
- Permitting & compliance
- Construction management
- Fiber route mapping and audits
- Splicing diagrams
- As-built drawings and reports
- Locating services
- BIM coordination



## Who We Serve

We partner with major stakeholders who supply and operate data centers and fiber networks:

- Cloud/hyperscale operators
- Fiber network operators
- Telecom carriers & ISPs
- Colocation providers
- Construction & general contractors
- Corporate campuses
- Government & municipalities
- Utilities & energy companies
- Edge data centers
- CLECs/ILECs
- Educational & healthcare institutions
- Fortune 100 Enterprises
- Neutral host operators
- Wireless networks
- Cable landing stations