

# Tuesday Night Bible Study

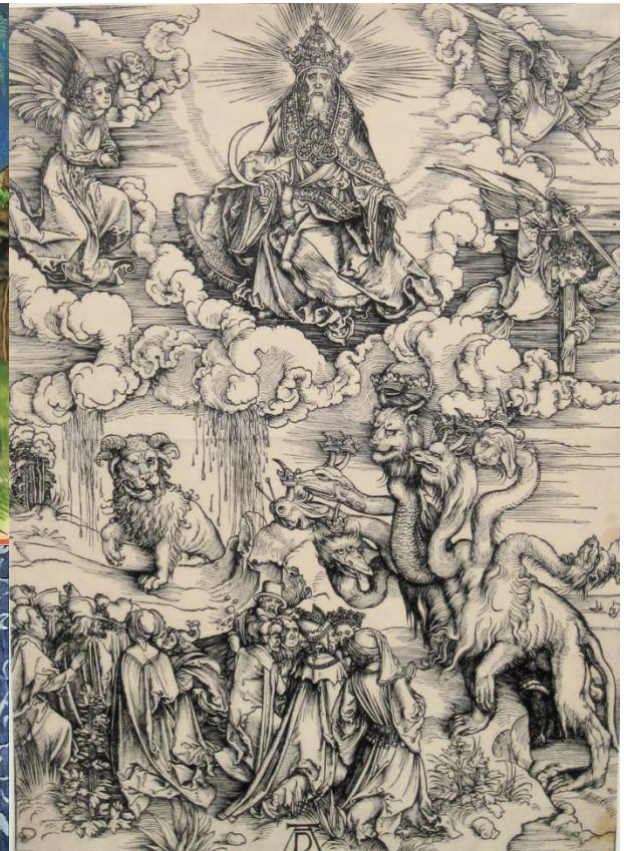
# REVELATION

## SESSION SIX

### The Dragon & The Beasts

Revelation 12:1-14:5

**Revelation 12:10-12 (CEB):** “Now the salvation and power and kingdom of our God, and the authority of his Christ have come. The accuser of our brothers and sisters, who accuses them day and night before our God, has been thrown down. <sup>11</sup> They gained the victory over him on account of the blood of the Lamb and the word of their witness. Love for their own lives didn’t make them afraid to die. <sup>12</sup> Therefore, rejoice, you heavens and you who dwell in them. But oh! The horror for the earth and sea! The devil has come down to you with great rage, for he knows that he only has a short time.”



# Tuesday Night Bible Study

# REVELATION

## Cast of Characters (Revelation 12 & 13):

- **The Woman (Rev 12:1):** Symbolizes Israel, or the faithful covenant people of God, often depicted as the lineage bringing forth the Messiah.
- **The Child (Rev 12:5):** Refers to Jesus Christ, who is to rule all nations with a rod of iron and is caught up to God.
- **The Dragon (Rev 12:3):** Identified as Satan, the devil, and the ancient serpent who seeks to destroy the woman and her offspring.
- **Michael (Rev 12:7):** The archangel who leads holy angels in war against the dragon, casting him out of heaven.
- **The Beast from the Sea (Rev 13:1):** This Beast is an evil parody of Christ, viewed as the Roman Empire.
- **The Beast from the Earth (Rev 13:11):** The False Prophet, a beast disguised as a lamb.

*“The sea beast is a patchwork job, assembled from left-over parts of leopard, bear, and lion. The land beast is a fake lamb, a clumsy counterfeit to the magnificent true Lamb. St. John allows for their capacity to strike terror still, but he also shows them as considerably shopworn. The old beasts have been around too long and are starting to lose their stuffing.” – Eugene Peterson*

## Discussion Questions

1. Where do you most clearly sense the tension between good and evil in our world right now?
2. If the woman represents not only Mary but the people of God, what does it mean that she is both glorious (clothed with the sun) and vulnerable (in labor, pursued)?
3. John describes the beasts as counterfeits — imitations of the real thing. What are some “counterfeit” voices or powers today that try to claim your loyalty?
4. The faithful bear the name of the Lamb instead of the mark of the beast. If someone could see what “marks” your life, what would they notice most clearly?