



Most Outstanding Higher Education Project

Utah Tech University Science, Engineering & Technology Building

This massive five-story, 163,000-SF building at Utah Tech University (formerly Dixie State) will help students blaze a new trail of innovation and discovery.

The 100-ft tall structure casts a towering campus presence and includes labs and classroom spaces for a wide swath of STEM studies, including physics, chemistry, biology, geo sciences, mechanical engineering, computer engineering, coding, mechatronics, anatomy, astronomy, and more. It also includes computer labs, faculty offices, and various support spaces. This project included the demolition of the Performing Arts Building and the demolition and repaving of the Education Building.

Its design includes cutting-edge and flexible laboratory learning environments that are specific in their layouts. The

building is extremely efficient with a compact floor plan of double-loaded corridors. Some classrooms and labs include expansive windows that can be darkened and converted into A/V display screens. Several of the critical labs in the building (including Chemistry and Gross Anatomy labs) are two distinct labs that are able connect by pulling back a moveable glass wall. This flexibility allows the lab section to be taught together as a larger class by a single faculty member, or two smaller sections separately.

The East Stair—considered a “Grand Stair”—is a required exit stair that would be enclosed in an emergency situation with a drop-down fire curtain and fire door assembly. It is located to access levels 2–5 and is completely open and inviting, offering dynamic views of the valley to the east.

Owner: DFCM

Architect: VCBO Architecture

General Contractor: Jacobsen Construction

Civil Engineer: Alpha Engineering

Electrical Engineer: Spectrum Engineers

Mechanical Engineer: Colvin Engineering

Structural Engineer: BHB Structural

Geotech: Alpha Engineering

Interior Design: VCBO Architecture

Furniture: Hendrickson Butler

Landscape Architect: VCBO Architecture,

Dixie State University; G Brown Design

Plumbing Subcontractor: Tom’s Mechanical

HVAC Subcontractor: Ace Mechanical

Electrical Subcontractor: Marshall & Evans Electric

Steel Fabrication: Lundahl Ironworks

Steel Erection: Unlimited Steel

Glass/Curtain Wall: Flynn-Noorda BEC

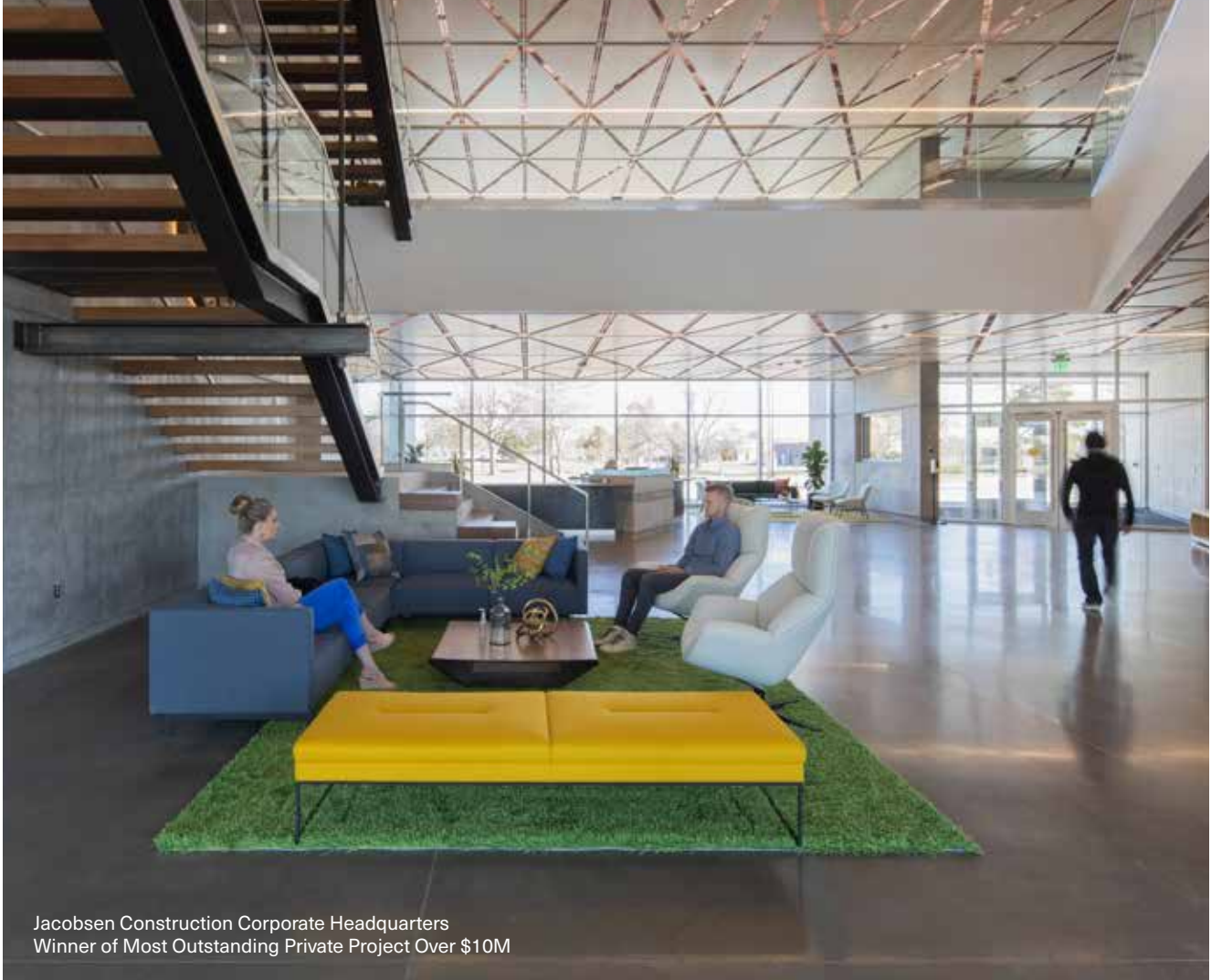
Masonry Subcontractor: Allen’s Masonry Company

Roofing: Flynn-Noorda BEC

Tile/Stone: Hendrickson Butler

Other Specialty Contractors: Mountain States Concrete, B&S Drywall Inc., RP Painting & Decorating, Spectra Contract Flooring, Sunroc, Waterproofing West, TID Demolition, Unlimited Design, Hansen’s Landscape Services Inc., Geopier Northwest, Granite Mill, ISEC, RP Painting & Decorating, Stone Touch, TKE Elevators, USI, Utah New Vision, Utah Yamas





We don't just build. We build for life.

At Jacobsen, we never lose sight of the life to be lived inside of what we build. It's why we take pride in crafting each detail to perfection.

We do it for those who will call your building "home."

Built for Life



JACOBSEN
CONSTRUCTION



