

Utah Construction & Design



December 2018

High Court

Provo 4th District Courthouse Named
'Most Outstanding Project' of 2018.

» YOUR MACHINES ARE ONLY
AS **PRODUCTIVE** AS THE **PEOPLE**
WHO STAND BEHIND THEM.



OUR SALES PITCH...

- | | | |
|---|--|---|
| 1. Your Business Partner Since 1951 | 19. Specialized Shops and Tooling | 34. Parts & Component Exchange |
| 2. 10 Convenient Locations | 20. Cat Certified Rebuilds | 35. Reman Parts & Components |
| 3. 90+ Field Service Trucks | 21. Complete Hydraulic Repair Service | 36. Cat Product Line Consisting of more than 300 Machine Models |
| 4. 4+ Certified Lube Service Trucks | 22. Monitor Equipment Health | 37. Machine Appraisals & Inspections |
| 5. 250+ Qualified Technicians | 23. Customizable Customer Support Agreements | 38. Work Tool Attachments for Maximized Machine Versatility |
| 6. Customer Technical Assistance Representative | 24. Equipment Transport Service | 39. Equipment Investment Analysis |
| 7. Over 150,000 Square Feet of Shop Space | 25. Total Maintenance & Repair | 40. Trench Safety Products |
| 8. Caterpillar 5-Star Contamination Control Rating | 26. My.Cat.com Consolidates All Your Equipment Data in One Place | 41. Earthmoving Fundamentals / Production Analysis |
| 9. 100+ Repair Bays – More than All Other Utah Competitors Combined | 27. Equipment Repair Status Updates via Text or E-mail | 42. Largest Rental Fleet in Utah |
| 10. Caterpillar Certified Technicians | 28. Telematics – Data Analysis & Recommendation | 43. Flexible Rental Terms & Competitive Rates |
| 11. Mobile Window Repair and Replacement | 29. Cat® Connection Monitoring Services through Product Link | 44. Rent-to-Purchase Options |
| 12. State-of-the-Art Fluids Analysis Lab | 30. Daily Parts Delivery from Cat Depots | 45. Cat Certified & Dealer Certified Used Equipment |
| 13. Sandblasting & Paint Services | 31. Daily Parts Delivers to Branch Stores and 50+ Drop Boxes | 46. Flexible Financing Programs |
| 14. Planned Maintenance Services | 32. Online Parts Ordering through Parts.Cat.com | 47. Consignment Sales |
| 15. Custom Track Services | 33. Emergency Parts Service – 24 Hours a Day / 7 Days a Week | 48. Technician Training |
| 16. Welding & Machining Services | | 49. Equipment Operator Training |
| 17. Dynamometer Capable of Testing both Diesel and Natural Gas Engines up to 5,000 hp | | 50. Contractor College |
| 18. Hydraulic Test Benches | | |

THEIRS... initial price.



Get to know us at:
specials.wheelercat.com/servicevideos

thank you for 100 years of great
partnerships in the community

 **OKLAND**
1918 | 2018 | 100

wheelercat.com | 800-662-8650 | 10 Convenient Locations |   

Wheeler 

© 2018 Caterpillar. All Rights Reserved. CAT, CATERPILLAR, BUILT FOR IT, their respective logos, "Caterpillar Yellow," the "Power Edge" trade dress, as well as corporate and product identity used herein, are trademarks of Caterpillar and may not be used without permission.

Winter Rental Rates Available



Winter is just around the corner! Honnen Equipment has the John Deere machines and attachments to keep you going all season long. We offer low hour winter rates for most machine rentals! Just need occasional use? **Ask about our really low hour rates** on select backhoes, loaders and skid steers for even more savings. Don't forget to be sure you have all your snow implements like plows, brooms and wings for easy snow removal. We understand there is no time for downtime when the snow hits so count on us to provide the parts, availability, and service responsiveness that you demand **24 hours a day, 7 days a week.**

Contact us today!

1-800-646-6636
www.honnen.com



PIONEERING NEW HEIGHTS



The construction industry is full of visionaries who take risks and try new ideas to complete jobs on time and under budget. Our team of attorneys has served as a guide for people just like you for decades. Whether your challenge is construction, financing, permitting, engineering, procurement contracts, or solving disputes through litigation mediation, or arbitration, our construction lawyers are here to help you move your project forward.

Contact: Carl Barton
801.799.5831 | cbarton@hollandhart.com
222 South Main Street, Suite 2200
Salt Lake City, UT 84101

HOLLAND & HART 
www.hollandhart.com



what's more american than a level playing field?

America has always been about opportunity. And nowhere is that truer than in the construction industry, where a job well done can be the ticket to success.

A fair and level playing field is essential to our American system of free enterprise. Every day, Associated Builders and Contractors (ABC) embraces policies that reward merit—hard work done well—at both the state and federal levels. We spread the word about fulfilling careers in the construction industry that are built on pride and accomplishment. We believe that doing your best should give you the best shot at success.

After all, what's more American than that?



Utah Chapter

wake up to the american dream

Visit abcutah.org, and learn how ABC members are winning more work, developing more people, and making construction more ethical, safe, and profitable.



what's more american than free enterprise?

Free enterprise important? We fought a revolution over it. Private business competing without undue government regulation pretty much defines the American Dream. And nowhere is this truer than in the construction industry, where competition drives quality ever higher.

Representing the interests of construction companies large and small, Associated Builders and Contractors (ABC) fights everyday for policies that strengthen and protect our cherished free enterprise system. We advocate for careers in the industry built on pride and accomplishment. Together with our members, we work toward an America where doing your best gives you the best shot at success.

After all, what's more American than that?



Utah Chapter

wake up to the american dream

Visit abcutah.org, and learn how ABC members are winning more work, developing more people, and making construction more ethical, safe, and profitable.

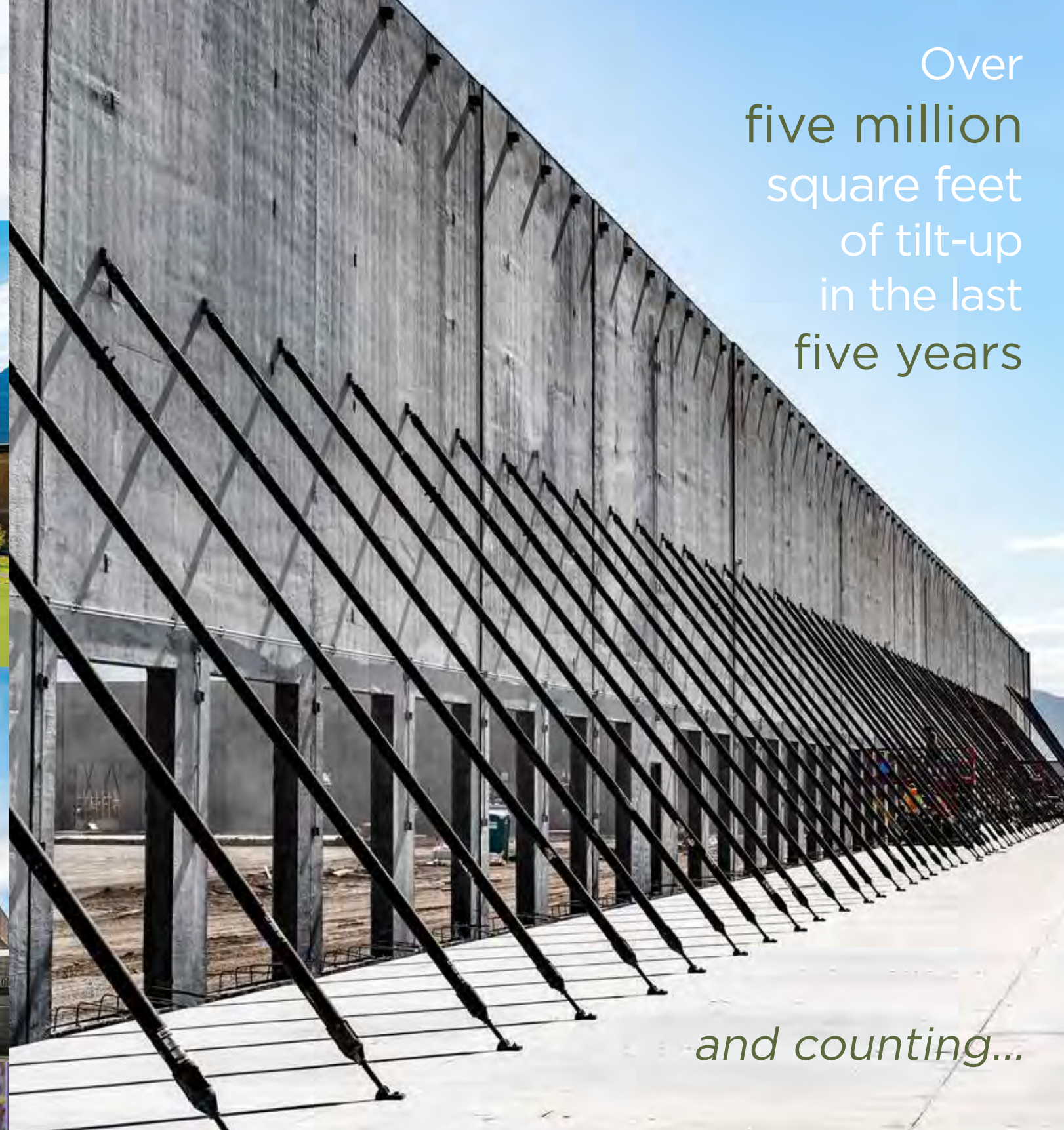


Over
five million
square feet
of tilt-up
in the last
five years

ETHICAL + RELIABLE + RESPECTED



Celebrating 25 Years of
Quality Projects and
Satisfied Clients



and counting...

Pentalon Construction
4376 S 700 E
Salt Lake City, UT 84107

Office 801.619.1900
www.pentalonconstruction.com



380 West 800 South, Suite 100
Salt Lake City, Utah 84101
(801) 575-8877
www.dunn-se.com



DUNN ASSOCIATES, INC
Consulting Structural Engineers

2018 Associated General Contractors of Utah Consultant/Engineer of the Year

Enabling Great Design™

RAMPED UP RESULTS

To Complete Four Interchanges on Bangerter Highway,
The W.W. Clyde Joint-Venture Pulled Out All the Stops.



TOUGH PROJECTS...*Innovative Solutions*

4 Interchanges. 19 Months. 1 Project. W.W. Clyde & Co. with Joint-Venture Partner Ralph L. Wadsworth delivered on this ambitious project designed to improve flow and reduce accidents along Bangerter Highway by converting 4 intersections with stoplights into full interchanges. The W.W. Clyde JV Team team worked 24/7 for the last year to hit every milestone, including completing a full bridge in 6 months. Now because of this award-winning project, motorists can travel on a safer and more efficient highway with less stop and go traffic.

**INFRASTRUCTURE | TRANSPORTATION | ENERGY
WATER | MINING & RECLAMATION | ALTERNATIVE DELIVERY**

SERVING THE INTERMOUNTAIN WEST & HAWAII SINCE 1926 • (801) 802-6800 • www.wwclyde.net

12 Publisher's Message

Most Outstanding Projects of 2018

- 16 Introduction/Jury/List of Projects
- 18 Provo 4th District Courthouse
- 22 Intermountain Gardner Transformation Center
- 26 Mountain View Village
- 28 Summit County Services Center and Kamas Branch Library
- 30 New Union High School
- 32 Jordan River Pedestrian Bridge and Trail
- 35 Inovar
- 36 Four Interchanges on Bangerter Highway
- 38 Salt Lake City Fire Station No. 14
- 40 Intermountain Healthcare Alta View Hospital Campus Reconfiguration
- 43 Wasatch Mental Health
- 44 SLCC Westpointe Workforce Training & Education Center
- 46 Cleone Peterson Eccles Alumni House
- 48 I-15, Brigham Road to Dixie Drive
- 50 SR-270, 9th South Connector Bridge Rehabilitation
- 52 One Empire Pass
- 55 UPS Regional Operations Facility
- 56 Farmington High School
- 60 The Zeller Apartments
- 62 Salt Lake City Fire Station No. 3
- 65 Roosevelt City State Street & Maintenance Project
- 66 Mountain America Credit Union Office Building
- 68 Rock Loft
- 70 Salt Lake County District Attorney Office Building
- 72 Battle Creek and Grove Creek Debris Basin Rehabilitation
- 75 Sorensen Legacy Foundation Center for Clinical Excellence
- 76 Weber County Library
- 78 Ken Garff Volkswagen
- 80 Campos Coffee Roastery & Kitchen
- 82 UPS Regional Operations Facility
- 84 Ira A. Fulton College of Engineering Building
- 86 Carolyn and Kem Gardner Commons
- 88 Zions Bank Real Academy
- 90 Podium
- 92 500 South Diversion, Phase I Pipeline Project

On the cover: At 183 feet tall, the Provo 4th District Courthouse is the tallest building in Provo, Utah's third-largest city, and will serve a vital role in the judicial community for the next half century and beyond. (photo by Dana Sohm, Sohm Photogrfx)

Table of Contents



← Publisher's Message

Most Outstanding Project Awards Illustrate Tremendous Community Impact of A/E/C Industry

Another year in the books, and wow, what a year it was! Utah's design and construction industry capped another season of notable projects during *UC&D's* **Most Outstanding Projects of the Year** event December 11 at Little America Hotel in Salt Lake City.

It was a privilege to host another fabulous event attended by more than 400 people tied to the A/E/C industry, including some influential owners along with other respected professionals. We appreciate the firms who help sponsor the awards presentation, where we handed out 35 well-deserved awards to 34 world-class projects – and I mean 'world class' in all sincerity.

The individuals who make these projects happen are dedicated, smart, hard-working, and willing to push the envelope to achieve end results that are nothing short of excellent. You need owners with a vision – and financing – long before talented architects and engineers can transfer that vision to a set of finely detailed plans. From there, it's up to myriad contractors – smart and disciplined general contractors (many who self-perform their own framing and concrete work), diligent subcontractors committed to high levels of detail, and suppliers, manufacturers and vendors delivering top-shelf materials.

I've been working in this industry for more than 20 years, and honestly, I still feel like I don't know enough people, given how vast it is, and how many talented companies it encompasses statewide.

Kudos to all those who had a hand in one of our 34 MOP award-winning projects. The positive impact made to the various communities that dot the Beehive State is simply staggering – it's hard to think of another industry contributing more good to our society and quality of life than this one!

Our 2018 'Project of the Year' went to the Provo 4th District Courthouse, an eight-story marvel that is the tallest building in Utah's third-largest city at 183 feet. It also will be one of the most important buildings to the legal community in Utah County for the next 50 years. In fact, pretty much all new buildings are being designed for 50-year minimum lifespans, so it's interesting to consider that for some of us, these buildings will potentially serve our grandchildren and great-grandchildren as this century chugs into its second half.

A lot of other projects stood out to me for their community impact:

- Union High School in Roosevelt, a building that will have a hugely positive effect on the residents of Duchesne County, was a mammoth undertaking over a two-year period and earned 'Outstanding Community Impact' honors.
- Two Salt Lake City fire stations – No. 14 and No. 3 – both earned awards (Outstanding Green Sustainable and Outstanding Municipal projects, respectively), partially fueled by the fact that they are two of the first three fire stations in the nation built to NetZero (NZE) standards. They're pretty dang cool buildings, in addition to being designed to generate more power – on-site – than they use.
- The Four Interchanges on Bangerter Highway project is one of those projects that just won't get the credit it deserves by the general public in terms of the impact it will have on future traffic flow on the west side of the Salt Lake Valley. Taking four stop-and-go intersections and transforming them into modern interchanges – in a little over a year-and-a-half – is Herculean on so many levels.
- The Zions Bank Real Academy (Outstanding Sports/Recreation) in Herriman is the latest project in Dell Loy Hansen's soccer empire, and this one is definitely world-class all the way around, a \$75 million investment with its own school, apartments, a 5,200-seat outdoor stadium and an indoor training facility with two full-size fields under its roof – column-free, given the world's largest pre-engineered free-span building in North America.

There are so many other amazing projects I could highlight in this space – just read the magazine! As always, I'm grateful for another year reporting on this great industry, and for the support we get from so many firms in terms of display advertising and editorial content. We appreciate your faith in us, and we aim to produce a better product in 2019. Get involved!

Happy New Year to everyone!



Brad Fullmer
Publisher/Managing Editor



UC&D

Utah Construction & Design Magazine
2607 S Decker Lake Blvd. Suite 100
Salt Lake City, UT 84119
O: (801) 747-9202
M: (801) 433-7541
www.utahcdmag.com

Bradley H. Fullmer
Publisher/Managing Editor
bfullmer@utahcdmag.com

Ladd J. Marshall
Advertising Sales Director
lmarshall@utahcdmag.com

Jay Hartwell
Art Director
jhartwell@utahcdmag.com



Utah Construction & Design is published eight (8) times a year. Postage paid in Salt Lake City, UT. All rights reserved. Reproduction in whole or in part without written permission is prohibited. Subscriptions: \$64.00 per year. Subscribers: If Postal Service alerts us that magazine is undeliverable to present address, we need to receive corrected address. Postmaster: Send address changes to 2607 S Decker Lake Blvd. Suite 100 Salt Lake City, UT 84119. To subscribe or contribute editorial content, or for reprints, please call (801) 433-7541 or email bfullmer@utahcdmag.com. For Advertising rates/Media Kit, please call (801) 872-3531 or lmarshall@utahcdmag.com.

Vol. 6 No. 8

Coming in the February issue of *UC&D*:
2019 Economic Outlook
AGC of Utah Convention Recap
Resort/Hospitality Market

UC&D

Utah Construction & Design 2018 AWARDS SPONSORS

Special Thanks to our Sponsors

Platinum Sponsors



Gold Sponsors



Silver Sponsors



UTAH CONSTRUCTION & DESIGN MAGAZINE

CONNECT

PEOPLE

POWER

HEAVY INDUSTRIAL • COMMERCIAL ELECTRICAL
SIGNAL & UTILITY • LINE & SUBSTATION
TECHNOLOGY & CLOUD SOLUTIONS
AVTEC PHYSICAL SECURITY • DAS
TELEDATA • MULTIMEDIA • SERVICE



CACHE VALLEY ELECTRIC
A TRADITION OF EXCELLENCE SINCE 1915

LEARN MORE: WWW.CVE.COM | 888-558-0600

SERVICE NATIONWIDE WITH OFFICES IN: UTAH | OREGON | TEXAS | ARKANSAS | HAWAII



2018 UC&D Most Outstanding Small Healthcare Project
2018 ENR Best Healthcare Project Award



Building Your Community
Embracing Wellness

Wasatch Mental Health Facility ascentconstruction.com

UC&D OUTSTANDING PROJECTS OF 2018

High Court

The Provo 4th District Courthouse earns coveted **Project of the Year** honors for 2018.

Putting a tidy bow on another incredible year of construction activity, *Utah Construction & Design* magazine honored its **2018 Most Outstanding Projects of the Year** with its 6th annual awards breakfast December 11 at Little America Hotel in downtown Salt Lake City.

For the second time in six years, a Courthouse was named 'Project of the Year' by a panel of A/E/C professionals from Utah's A/E/C industry, this one the

impactful eight-story, 210,000 SF Provo 4th District Courthouse in Utah County. In all, UC&D handed out 35 awards on 34 projects (from a record 105 submissions!), a testament to the amazing projects being designed and built in the state.

The community impact of each of these projects in the Beehive State is invaluable on so many levels, with vibrant new public and private projects dotting the landscape of cities and towns.

Cumulatively, billions of dollars are spent on these projects annually, and 2018 was certainly on par with the kind of activity that has been occurring the past half dozen years, the last recession nothing more than a difficult past lesson at this juncture.

We salute the many talented people and firms who worked together on the creation of these great projects, and appreciate the widespread interest level in our annual awards competition. Salute!

2018 Judging Panel

Not Pictured: Eli Priest – Newmark Grubb ACRES



Sarah Boll – Utah DFCM



Kris Cooper – ABC Utah



Keith Diaz Moore – AIA Utah



Michael Smith – ACEC Utah



Rich Thorn – AGC of Utah



Jim Webb – UDOT

CATEGORY	PROJECT	SUBMITTING FIRM(S)
Project of the Year	Provo 4th District Courthouse	Okland Construction
Commercial/Office	Intermountain Gardner Transformation Center	Jacobsen Construction
Commercial/Retail	Mountain View Village	Layton Construction
Community/Cultural	Summit County Services Center & Kamas Branch Library	method studio
Community Impact	New Union High School	Westland Construction / KMA Architects
Concrete/Structures	Jordan River Pedestrian Bridge and Trail	Stanley Consultants / Gerber Construction
Concrete/Tilt-Up	Inovar	AE Urbia
Design-Build	Four Interchanges on Bangerter Highway	RLW/Clyde, A Joint Venture
Green/Sustainable	SLC Fire Station No. 14	Zwick Construction
Healthcare – Large	Intermountain Healthcare Alta View Hospital Campus Reconfiguration	Okland Construction
Healthcare – Small	Wasatch Mental Health	Ascent Construction
Higher Education – Large	Salt Lake Community College Westpointe Workforce Training & Education Center	Big-D Construction
Higher Education – Small	Cleone Peterson Eccles Alumni House	Zwick Construction
Highway Over \$10 M	I-15; Brigham Road to Dixie Drive	Horrocks Engineers
Highway Under \$10 M	SR-270; 9th South Connector Bridge Rehab	Gerber Construction
Hospitality/Resort	One Empire Pass	Jacobsen Construction
Industrial	UPS Regional Operations Facility	Layton Construction
K-12	Farmington High School	Hogan & Associates Construction
Multi-Family	The Zeller Apartments	Jacobsen Construction
Municipal	SLC Fire Station No. 3	Wadman Corporation
Municipal/Utility	Roosevelt City State Street & Maintenance Project	CIVCO Engineering, Inc. / Burdick Materials
Private Over \$10 M	Mountain America Credit Union Office Building	Okland Construction
Private Under \$10 M	Rock Loft	Ascent Construction
Public Over \$10 M	Salt Lake County District Attorney Office Building	Jacobsen Construction
Public Under \$10 M	Battle Creek & Grove Creek Debris Basin Rehabilitation Project	Gerber Construction
Publisher's Pick	Sorensen Legacy Foundation Center for Clinical Excellence	R&O Construction
Renovation Over \$10 M	Weber County Library - Main Branch	Wadman Corporation
Renovation Under \$10 M	Ken Garff Volkswagen	Curtis Miner Architecture
Restaurant	Campos Coffee Roastery and Kitchen	Lloyd Architects
Specialty Contracting – Electrical	UPS Regional Operations Facility	Hunt Electric
Specialty Contracting – Masonry	Ira A. Fulton College of Engineering & Technology Building	IMS Masonry
Specialty Contracting – Mechanical	Carolyn and Kem Gardner Commons	Archer Mechanical
Sports/Recreation	Zions Bank Real Academy	Forterra Structural Precast / Sunroc Corporation
Tenant Improvement	Podium	Beecher Walker / Okland Construction
Water/Wastewater	500 South Diversion; Phase I Pipeline Project	Whitaker Construction

Project of the Year

Provo 4th District Courthouse

What a dramatic addition to Utah's third-largest city – an eight-story, 210,000 SF courthouse that is Provo's tallest building, and will stand as a distinguished, monumental structure for the next century and beyond.

The exterior is highlighted with two-tone, GFRC concrete panels, an eye-popping glass and curtain wall system, and striking black marble podium accents. Architects used traditional materials in a modern vernacular to evoke the City's rich history, while firmly looking forward to the future.

The building includes 16 highly functional, state-of-the-art courtrooms and attractive ancillary areas. Each courtroom features custom blue print matched Mozambique wood veneer paneling, accented with solid wood trim. Courtroom lobbies have custom tile floor designs and

stylish three-dimensional wall tiles, with lighter accent finishes. One unique feature is glass windows in each courtroom, providing daylighting into even the innermost spaces of the building.

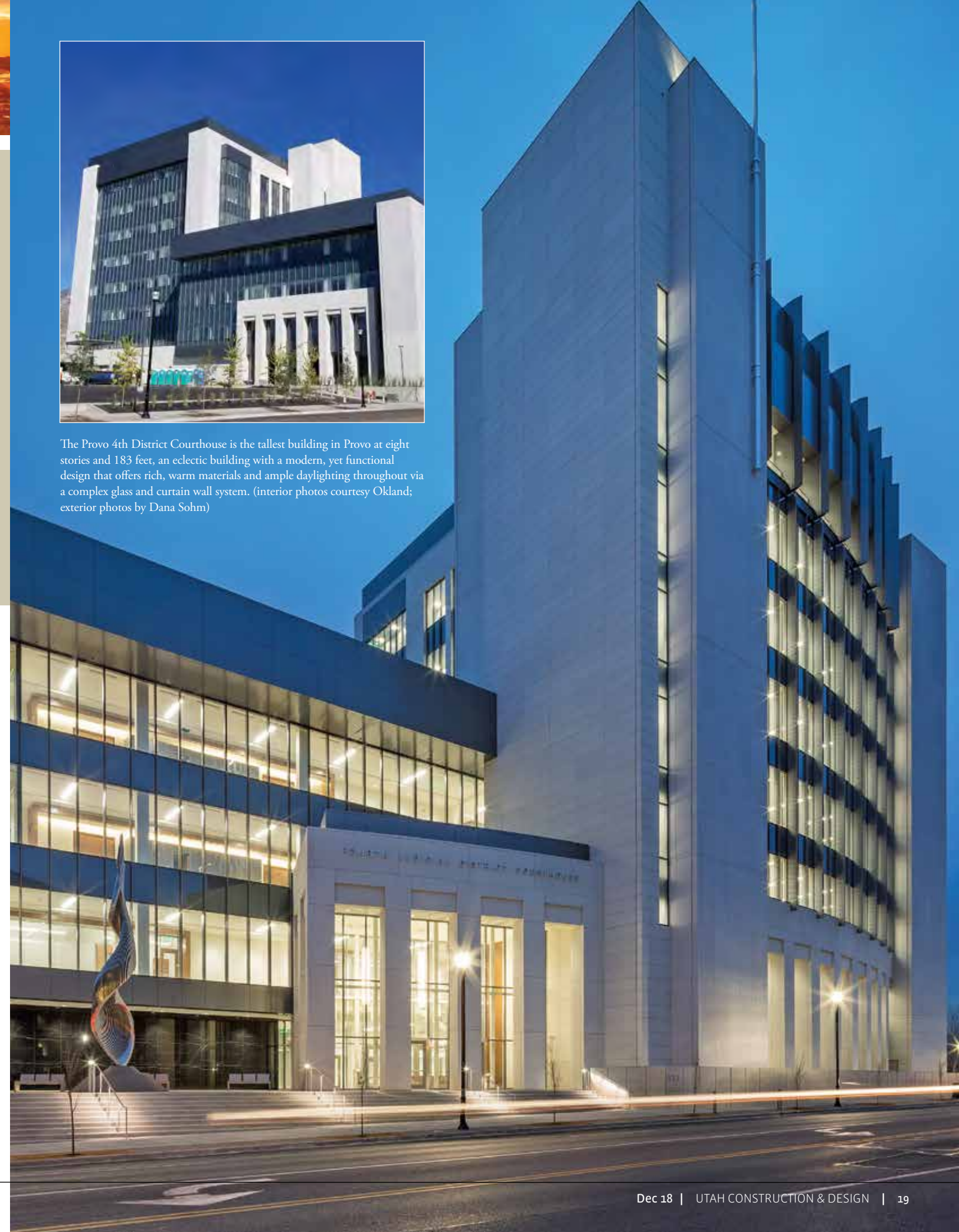
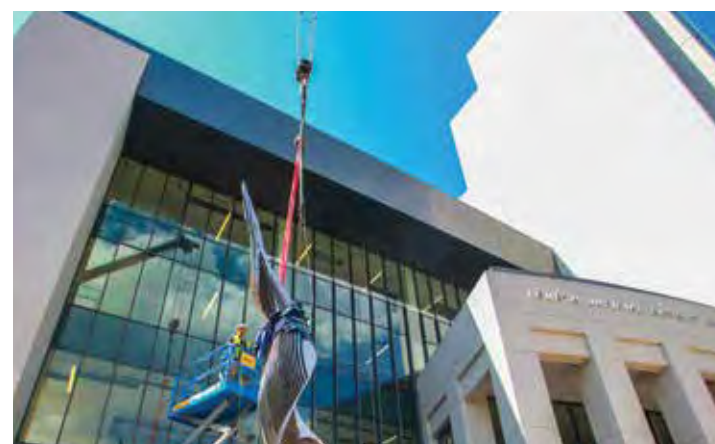
An innovative technique was utilized on the installation of the GFRC panels, with crews embedding steel support frames directly into the GFRC, essentially reducing a 3-foot to 6-foot steel subframe to one-foot integrated frames, which made the system light enough to attach directly to the light gauge insulation z-gurts of the exterior walls, rather than a separate sub frame system and saving \$800,000 in the process.

A two-story modern colonnade faces east towards the aptly named 'Freedom Boulevard' and serves to help provide a more prototypical courtroom feel, despite being a one-hundred and eighty-foot-tall building.

Owner/Developer: State of Utah - DFCM
Architect: VCBO Architecture
General Contractor: Okland Construction
Electrical Engineer: Spectrum Engineers
Mechanical Engineer: Colvin Engineering Associates
Structural Engineer: Reaveley Engineers + Associates
Civil Engineer: Talisman Civil Consultants
Electrical Subcontractor: Wilkinson Electric
Mechanical Subcontractor: A&B Mechanical
Earthwork & Utilities: Sunroc Corporation
Millwork: Boswell Wasatch
Tile & Stone Pavers: Millcreek Tile & Stone
Exterior Curtain Wall & Interior Glass: Steel Encounters
Exterior GFRC & Detention CMU: IMS Masonry
Studs, Drywall and Ceiling: Ceiling Systems Inc. (CSI),



The Provo 4th District Courthouse is the tallest building in Provo at eight stories and 183 feet, an eclectic building with a modern, yet functional design that offers rich, warm materials and ample daylighting throughout via a complex glass and curtain wall system. (interior photos courtesy Okland; exterior photos by Dana Sohm)





This \$85 million project is a definite landmark building for all of Utah County, and was designed to serve the community for the next 50-plus years.



Most Outstanding Commercial/Office Project Intermountain Gardner Transformation Center

Located near the Intermountain Medical Campus in Murray, this \$50 million dollar, 120,000 square foot facility is designed specifically for the training of current and future health care professionals. The LEED Gold facility features trendy central gathering spaces on each floor to spark collaboration among workplace and educational wings, with inspiring views of the Wasatch and Oquirrh Mountain ranges.

The glass and curtain wall system is a unique, curved masterpiece that provides excellent daylighting throughout the building. Materials are representative of Utah's natural beauty, with the combination of red-brown terra cotta cladding and painted metal skin representative of Southern Utah's striking landscapes.

Owner: Intermountain Healthcare
Architect: NBBJ Architects
General Contractor: Jacobsen Construction
Electrical Engineer: Electrical, AV & Acoustics
Mechanical Engineer: Van Boerum & Frank Associates
Structural Engineer: Reaveley Engineers + Associates
Electrical Subcontractor: Wasatch Electric
Mechanical Subcontractor: Alternative Mechanical Contractors
Other Specialty Contractors: Steel Encounters, Superior Tile & Marble, Mitchell Acoustics, Boswell Wasatch Mill



This innovative \$50 million project stands out for both its unique, curved exterior and curtain wall system, and for its role in training future health care professionals for Utah and the Intermountain Region. (photos courtesy Jacobsen Construction)





Warm, vibrant colors are present inside and out on this 120,000 SF building in Murray, adjacent to the Intermountain Healthcare Campus.



CURED-IN-PLACE-PIPE?

YEP, WE DO THAT

whitaker
construction co.

435-723-2921 / 44 S 1050 W Brigham City, UT 84302 / www.whitcon.com

Most Outstanding Commercial/Retail Project Mountain View Village

Mountain View Village is the newest hot retail development in Riverton, a 3-phase, 85-acre mixed-use project that aims to serve as a community hub in the South Salt Lake Valley, with an emphasis on hip public gathering spaces. The completed Phase I project spans 38 acres, with nearly 380,000 square feet of retail space, including big box

stores, quaint shops and restaurants, a hotel, luxury theater, and Class A office space.

Social areas include tactile, contemporary seating areas, outdoor fire and water features, and a majestic 20-foot tall bronze eagle statue. Phase I was enhanced with 600 mature trees and fully developed landscaping.

Owner: CenterCal Properties
Architect: AO Architects
General Contractor: Layton Construction
Electrical Engineer: Hunt Electric
Mechanical Engineer: CCI Mechanical
Structural Engineer: Dunn Associates, Inc.
Civil Engineer: Psomas
Electrical Subcontractor: Hunt Electric
Mechanical Subcontractor: CCI Mechanical
Other Specialty Contractors:
Intermountain Planning

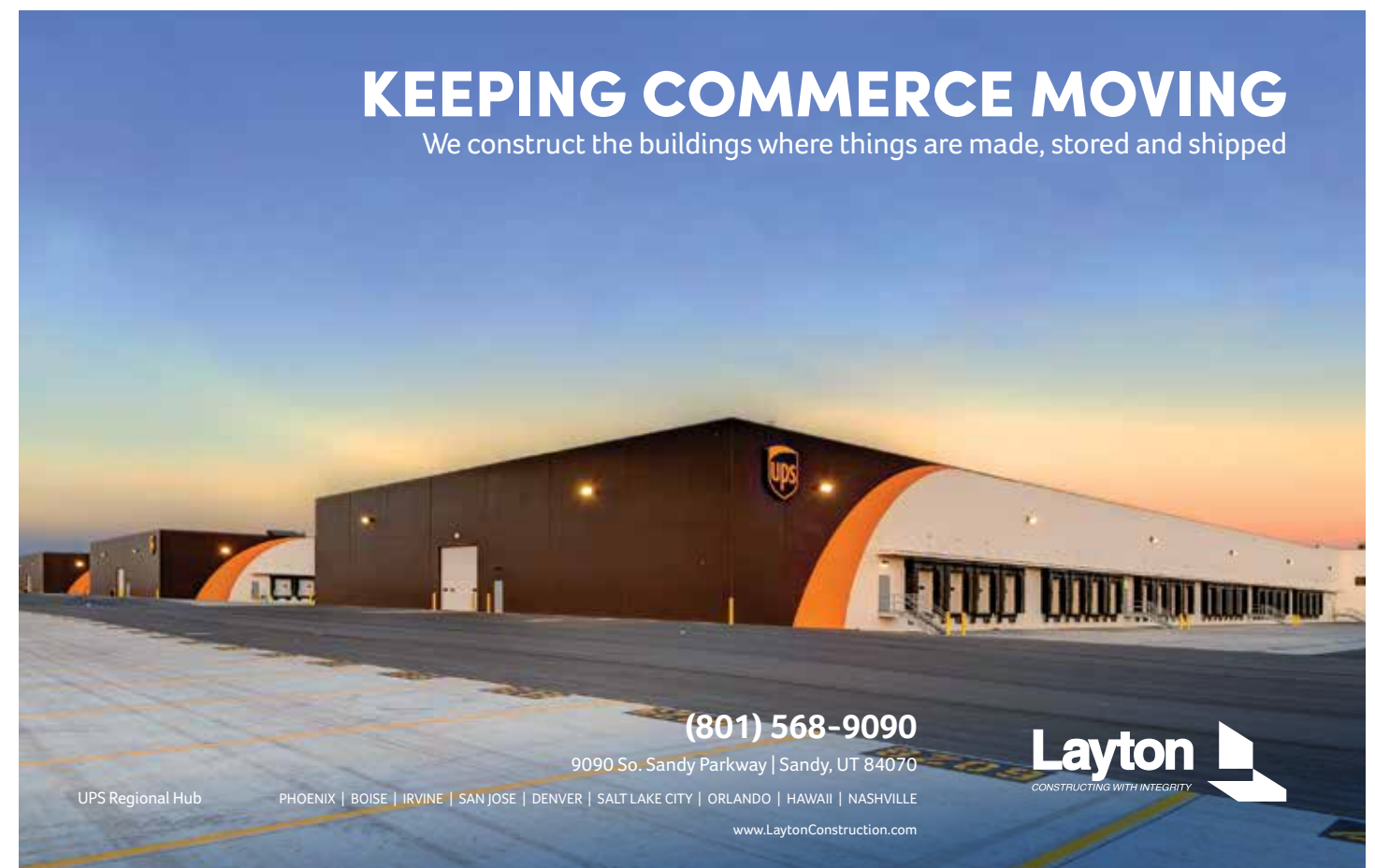


The sprawling Mountain View Village commercial/retail development is a much-needed addition to this 85-acre section of the Riverton community in South Salt Lake County. (photos courtesy Layton Construction)



KEEPING COMMERCE MOVING

We construct the buildings where things are made, stored and shipped



(801) 568-9090

9090 So. Sandy Parkway | Sandy, UT 84070

UPS Regional Hub

PHOENIX | BOISE | IRVINE | SAN JOSE | DENVER | SALT LAKE CITY | ORLANDO | HAWAII | NASHVILLE

www.LaytonConstruction.com

Layton
CONSTRUCTING WITH INTEGRITY

Most Outstanding Community/Cultural Project Summit County Services Center and Kamas Branch Library

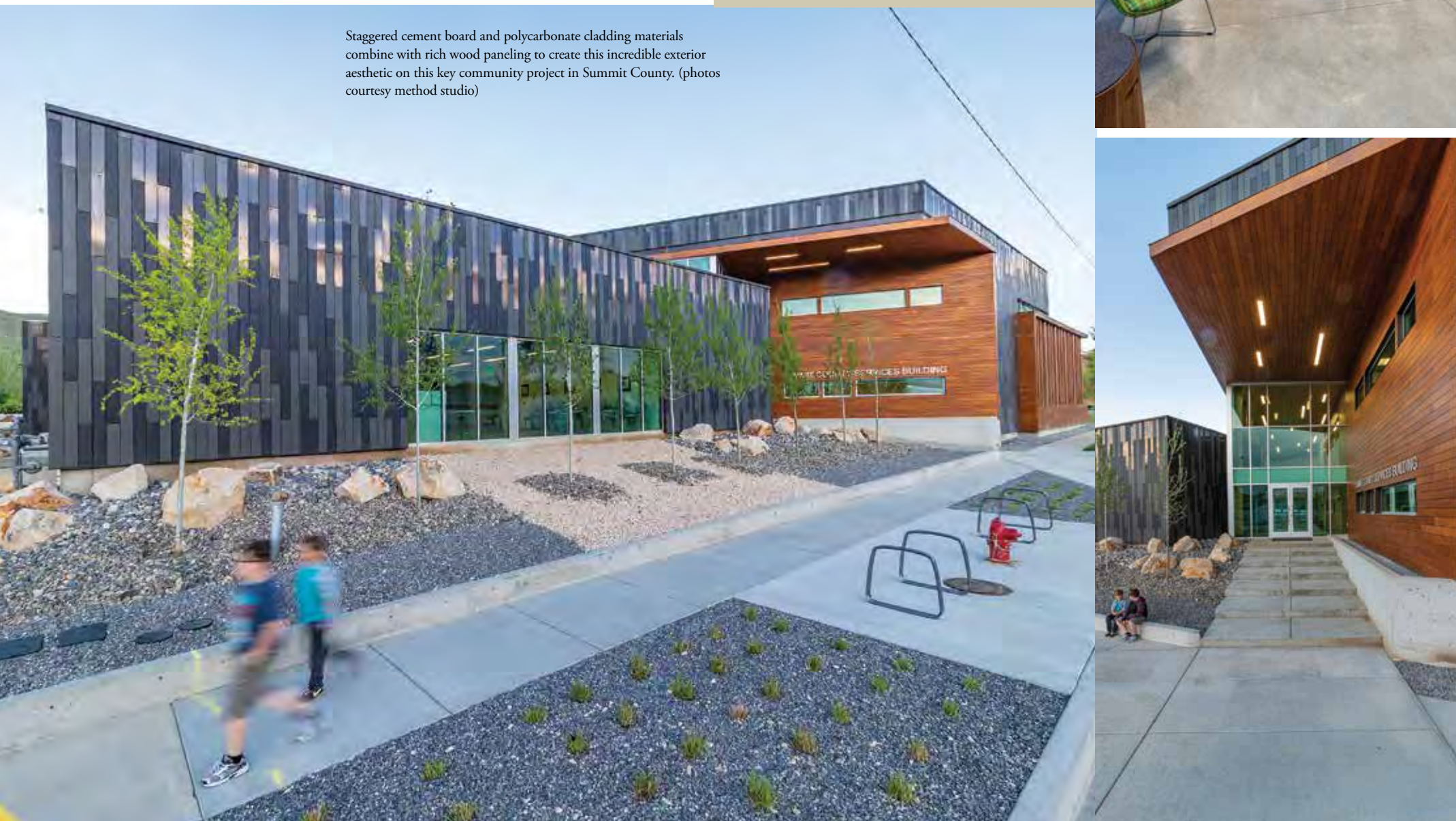
This \$5 million dollar, two-story building captures the spirit of the community as a gateway to the Uintas. The design and color palette aims to emulate the gradual climb from the valley floor to the peaks of these stunning mountains. Sustainable features of the 18,000 square foot space include LED lighting, a solar array, high-efficiency HVAC equipment, and daylight harvesting.

Staggered cement board and

polycarbonate cladding offer a unique contrast to the natural environment, accented with warm, natural-colored wood. Innovative construction approaches were used on several features, including a slatted interior wall element that spans across a large window opening. Composite cladding was pre-fabricated as an independent outer sleeve, mitigating curling at joints and edges.

Owner: Summit County
Architect: method studio
General Contractor: Spindler
Electrical Engineer: BNA Consulting
Mechanical Engineer: Van Boerum & Frank Associates
Structural Engineer: BHB Structural Engineers
Civil Engineer: Forsgren Associates, Inc.
Electrical Subcontractor: JP Electrical
Mechanical Subcontractor: HMI Heating & Air (HVAC), Commercial Mechanical Systems & Service (Plumbing)

Staggered cement board and polycarbonate cladding materials combine with rich wood paneling to create this incredible exterior aesthetic on this key community project in Summit County. (photos courtesy method studio)



STAKER PARSON
MATERIALS & CONSTRUCTION
A CRH COMPANY

THE PREFERRED SOURCE



SAND, ROCK & LANDSCAPE PRODUCTS



READY-MIXED CONCRETE



ASPHALT & PAVING



CONSTRUCTION SERVICES



BURDICK
MATERIALS
A CRH COMPANY



HALES
SAND & GRAVEL
A CRH COMPANY



IDAHO MATERIALS
& CONSTRUCTION
A CRH COMPANY



JACK B. PARSON
READY MIX CONCRETE
A CRH COMPANY



NIELSON
CONSTRUCTION & MATERIALS
A CRH COMPANY



REYNOLDS EXCAVATION
DEMOLITION & UTILITIES
A CRH COMPANY



STAKER PARSON
MATERIALS & CONSTRUCTION
A CRH COMPANY



STAKER PARSON
LANDSCAPE CENTERS
A CRH COMPANY



WESTERN ROCK
PRODUCTS
A CRH COMPANY

STAKERPARSON.COM | 888-90-ROCKS

Most Outstanding Community Impact Project New Union High School

The \$80 million dollar, 320,000 square foot replacement of Union High School is the largest construction project in Roosevelt in recent memory, and stands to be the most impactful building in the community for the next 50-plus years.

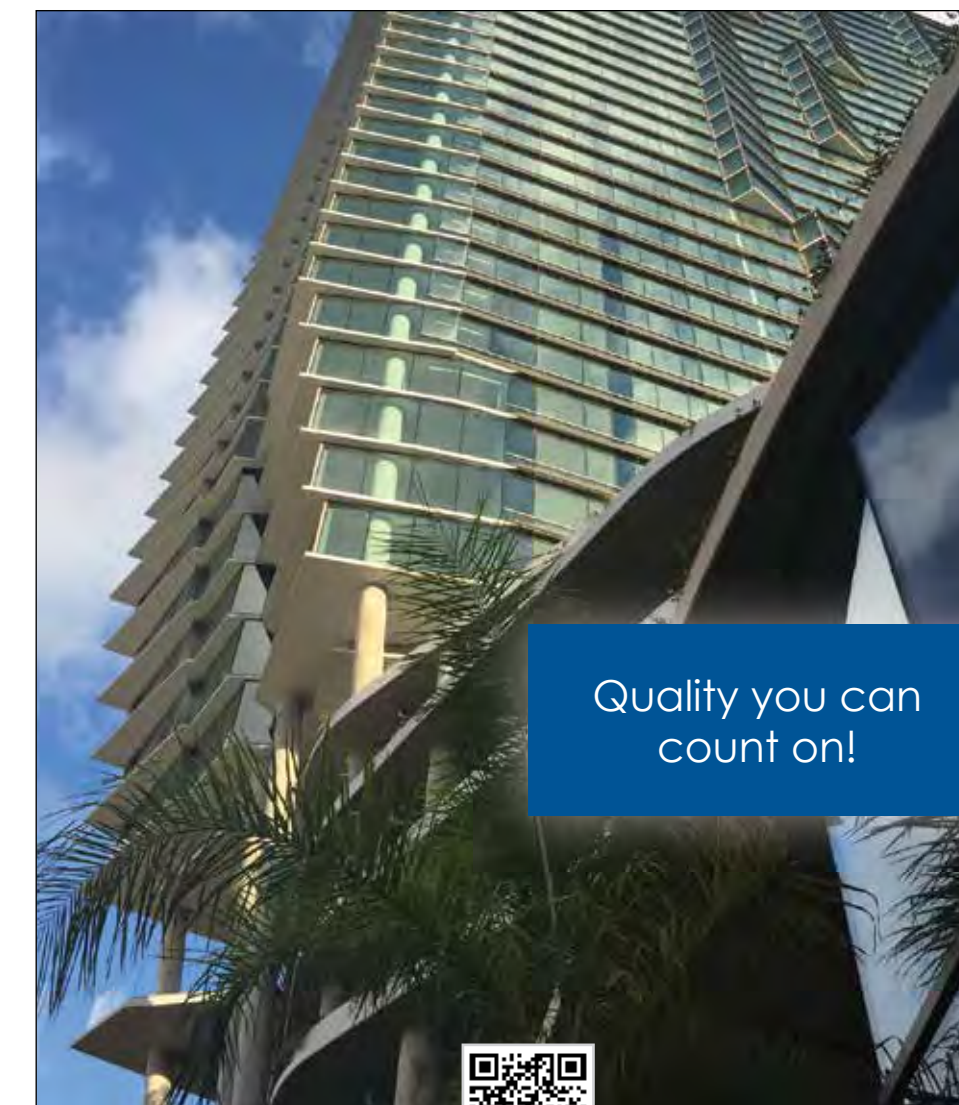
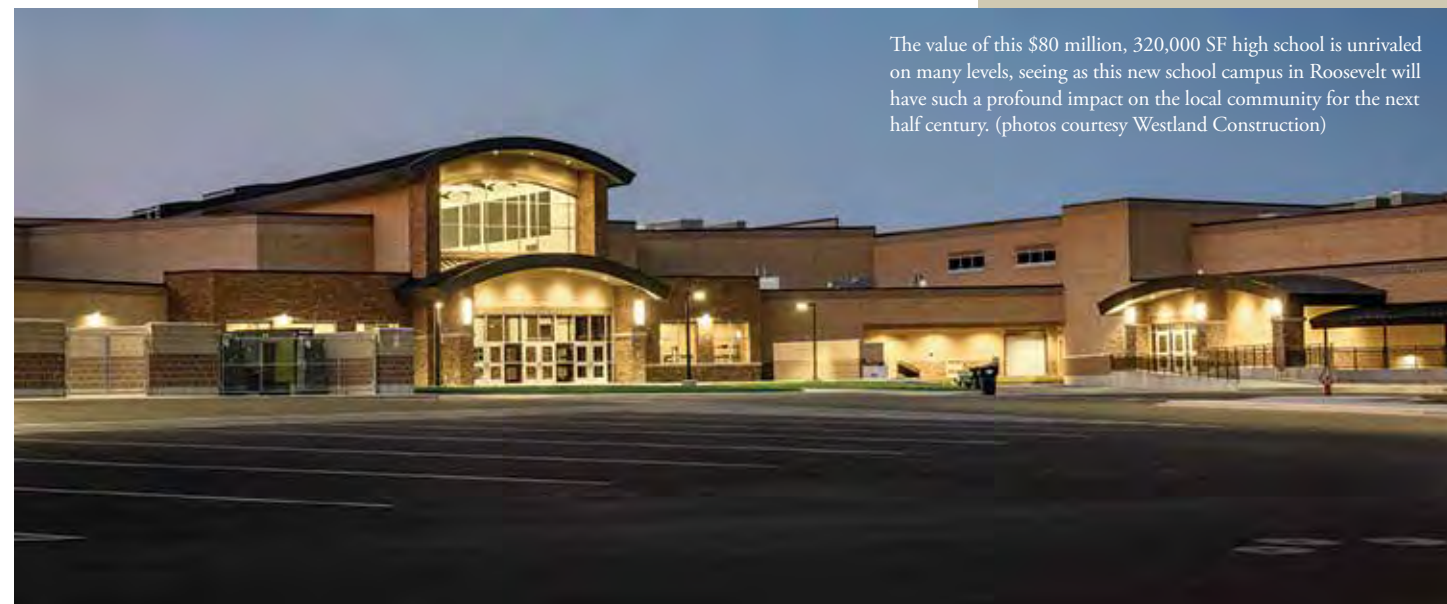
Rich, earthy beige and brown colors feature prominently on the masonry exterior. Large windows and rooftop skylights allow daylighting to reach

interior spaces, which are highlighted with rock columns and ornamental metal and glass railings in the lobby.

A 1,600-seat auditorium includes extensive lighting and rigging systems, a new sound system, and a black box theater. The school's sports complex features modern synthetic turf for all fields, high-end locker facilities, tennis courts and other practice fields.

Owner: Duchesne County School District
Architect: KMA Architects
General Contractor: Westland Construction
Electrical Engineer: Royal Engineering
Mechanical Engineer: Olsen & Peterson Engineering
Structural Engineer: Dynamic Structures
Civil Engineer: Great Basin Engineering
Electrical Subcontractor: Tri-Phase Electric
Mechanical Subcontractor: Western States Mechanical
Other Specialty Contractors: Buxton Masonry, Steel Encounters

The value of this \$80 million, 320,000 SF high school is unrivaled on many levels, seeing as this new school campus in Roosevelt will have such a profound impact on the local community for the next half century. (photos courtesy Westland Construction)



Quality you can
count on!



STEELENCOUNTERS

PREMIER BUILDING ENVELOPE CONTRACTOR

525 East Broadway | SLC, UT 84102
STEELENCOUNTERS.COM

Most Outstanding Concrete/Structures

Jordan River Pedestrian Bridge and Trail

This key infrastructure project is the final connecting piece of the Jordan River Parkway; a 45-mile, multi-use trail system that parallels the Jordan River through Utah and Salt Lake counties, marking one of the longest urban trail systems in the nation. The 280-foot, single-span, prefabricated bridge structure comprises

11 column and bent cap structures on pile cap foundations. It also includes 22 steel girders ranging from 37 to 105 feet in length, and more than one thousand feet of 16-foot wide elevated concrete path. The bridge was erected over three active rail lines, which added to its complexity.

Owner: Salt Lake City Corporation
Lead Design Firm: Stanley Consultants
General Contractor: Gerber Construction
Electrical & Civil Engineer: Stanley Consultants
Structural Engineer: Stanley Consultants and Contech Engineered Solutions
Geotechnical: Gerhart Cole
Electrical Subcontractor: High West Contractors
Asphalt Installation: Staker Parson Companies
Other Key Specialty Contractors: Desert Deep Foundations, Contech Engineered Solutions, Oracle Group, Wagstaff Crane

Crews were challenged by the close proximity to working over three active rail lines on this impressive structural project, a key infrastructure piece to the Jordan River Parkway trail. (photos courtesy Gerber Construction)



MOUNTAIN STATES FENCE

SALT LAKE CITY, UTAH

801-261-4224





AE URBIA - AE stands for architecture and engineering. URBIA is a state of belonging to; a group, a company or community which is rich in experience, facilitated through design. AE URBIA is a group of architects and engineers devoted to creating and improving companies, communities and cities by creating “great spaces” which provide rich experiences.

With rising development costs, Tilt-up Concrete can provide resilient, sustainable-class “A” office buildings while saving owners 20% over conventional construction.

Let AE URBIA assist you with your next building project, regardless of size or location.

aeurbia
architects and engineers
J.M. Williams and Associates
909 west south jordan parkway
south jordan, utah 84095
phone: 801.746.0456 - fax: 801.575.6456
webpage: a e u r b i a . c o m

UC&D

Outstanding Projects of 2018

Most Outstanding Concrete/Tilt-Up Project Inovar

This 120,000 square foot tilt-up concrete building serves as an office and manufacturing facility for Inovar, a 20-year-old Logan-based firm that manufactures specialty electronic components. The new building is constructed of simple geometric shapes and clean straight lines – a composition of squares and rectangles formed by window mullions and complimentary reveals in the

concrete panels.

The entry vestibule was constructed using a rectangular portal. As you pass through it, you transition from a small box into a larger box, which houses dynamic lobby and reception spaces. The main lobby is highlighted with floor to ceiling glazing and a simple, yet stylish black, white and gray color palette.

Owner: Johnny 5 LLC
Architect: AE Urbia
General Contractor: Tom Stuart Construction
Electrical Engineer: Fellex Engineering
Mechanical Engineer: DB Mechanical / JTB Engineering
Structural Engineer: AE Urbia
Civil Engineer: CIR Engineering
Electrical Subcontractor: Salmon Electric
Mechanical Subcontractors: DB Mechanical (HVAC), MKB Mechanical Inc. (Plumbing)
Other Specialty Contractors: Design West Acoustics, Redd Roofing Co.



Most Outstanding Design-Build Project Four Interchanges on Bangerter Highway

It's easy to see the importance of this \$145 million dollar project, one that moves an average of 60,000 daily commuters on this bustling west side highway in the Salt Lake Valley. Four brand new state-of-the-art interchanges were constructed during a blistering 19-month schedule, another brilliant example of UDOT's 'Keeping People Moving' philosophy.

Crews placed an enormous amount of material, including 400,000 square yards of concrete paving and 430,000 square yards of asphalt paving, 16 miles of concrete barrier, two-and-a-half miles of noise wall, 10 miles of drainage pipe, 280,000 square feet of MSE walls, and more than seven million pounds combined of structural and reinforcing steel.



Owner: Utah Department of Transportation Region 2

Lead Design Firm: Michael Baker International, with H.W. Lochner as a subconsultant

General Contractor: RLW/Clyde, A Joint Venture (Ralph L. Wadsworth Construction Company and W.W. Clyde & Co.)

Structural & Civil Engineer: Michael Baker International, with H.W. Lochner as a subconsultant

Concrete Cutting & PCCP Saw and Seal: A-Core

Other Specialty Contractors: RC Hunt, Brinkerhof Excavation, Ralph Smith, DDF Inc., Geneva Rock Products, Harper Precast, Wheeler Machinery, Mammoth, AAA Barricade, Peck Striping, CMT, The Reinforced Earth Company, Ferguson Waterworks, Pacific Bridge & Steel, Antigo, Boulderscape, Gateway, RBI, Hark Drilling, Wagstaff Crane

BIG-D
CONSTRUCTION

HEART, SOUL, MUSCLE, & MIND

Guess it's no longer a secret. But then, any Big-D customer could have recited that recipe. You see, we wear it on our rolled-up sleeves. It's tattooed to our frontal lobe. And stamped on our psyche.

It means we deliver a job well done, with a gusto that guarantees your expectations will be exceeded

And then some.

CALL 800.748.4481 OR VISIT WWW.BIG-D.COM



BEST OF STATE
UTAH 2018

Most Outstanding Green/Sustainable Project Salt Lake City Fire Station No. 14

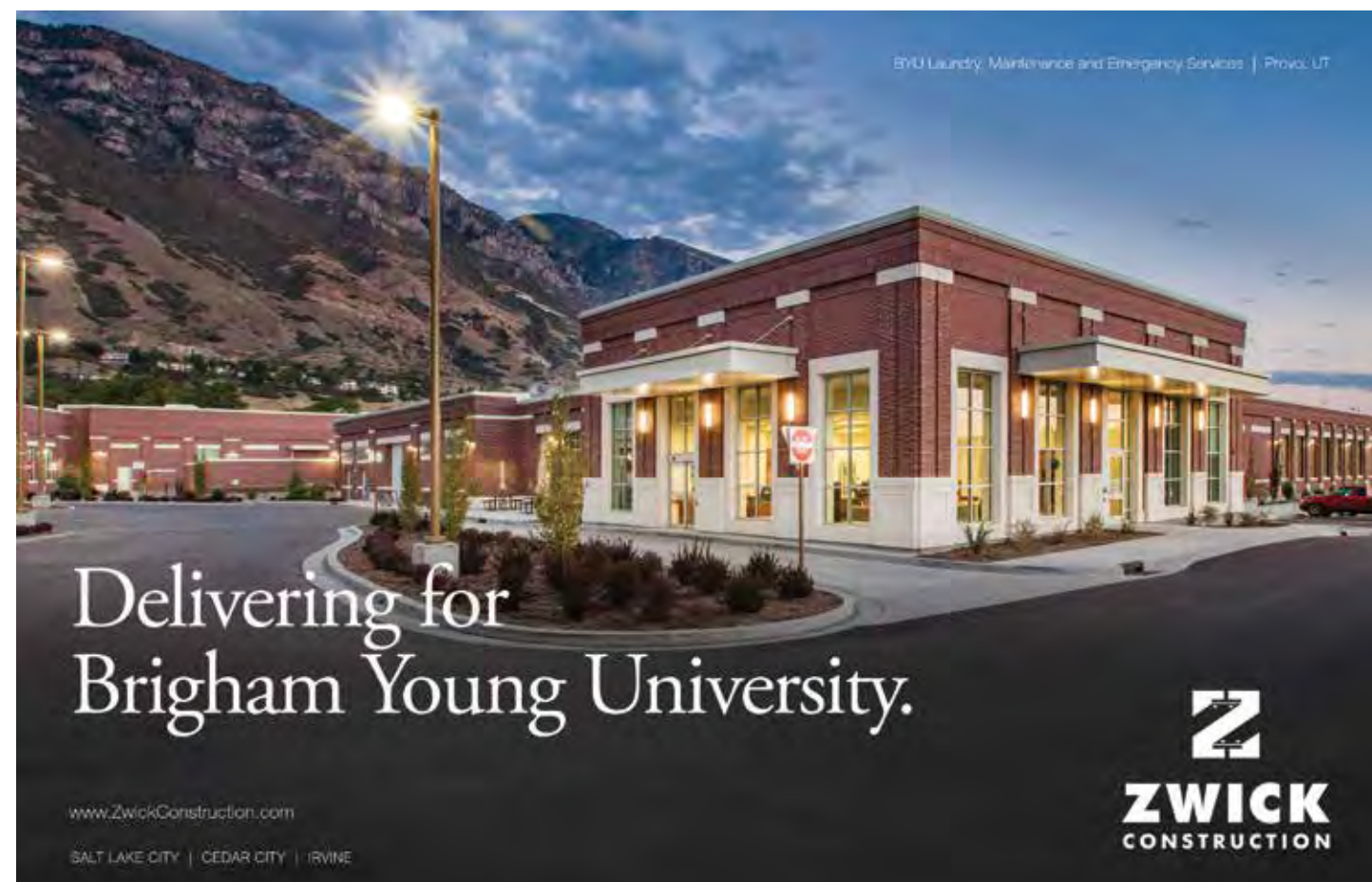
This two-story, 17,000 square foot multi-company facility was designed as the first of two Net Zero Energy fire stations in the country built by Salt Lake City, with a host of sustainable features to go along with unmatched aesthetics and top-shelf amenities that can accommodate up to 12 EMT/fire fighters.

Innovative features include a geothermal heating and cooling system, a rooftop solar array with highly efficient

360-watt panels, R42 roof and R34 wall insulation values, triple-paned glazing with ceramic frit, and passive shading and ventilation strategies.

Durable exterior cladding materials include oko skin, high-performance concrete, and zinc panels. Designed as a 50-year facility, it stands as a civil beacon in the community, and had net positive energy after its first five months of operation – producing more energy than it consumes.

Owner: Salt Lake Fire Department
Architect: Blalock and Partners
General Contractor: Zwick Construction
Electrical Engineer: Spectrum Engineers
Mechanical Engineer: Van Boerum & Frank Associates
Structural Engineer: BHB Structural Engineers
Civil Engineer: Andersen Wahlen & Associates
Electrical Subcontractor: Cutler Electric
Mechanical Subcontractor: Budd Rich Plumbing
Other Specialty Contractors: TCA Architecture, G Brown Design, Inc., Ponds Plumbing



Most Outstanding Large Healthcare Project Intermountain Healthcare Alta View Hospital Campus Reconfiguration

This project was built using a complex seven-phase construction plan that mitigated impact and ensured safety to the staff and public. Two new buildings were added to the long, narrow site: a 120,000 square foot clinic, and a 160,000 square foot hospital. The project included a new 36-bed patient wing, a seven operating room surgical suite, a new emergency department,

a renovation of the Women's Center, and various campus infrastructure upgrades.

Architecturally, the massing of the new 'bookend buildings' are positioned to maintain pristine mountain views. Structurally, this project is among the first in the U.S. to use bolted SidePlate connections, which reduced overall cost and schedule time.

Owner: Intermountain Healthcare
Architect: Perkins + Will / VCBO Architecture
General Contractor: Okland Construction
Electrical Engineer: Spectrum Engineers
Mechanical Engineer: Archer Mechanical
Structural Engineer: Reaveley Engineers + Associates
Civil Engineer: Great Basin Engineering
Electrical Subcontractor: Taylor Electric
Mechanical Subcontractor: Archer Mechanical
Other Specialty Contractors: Schuff Steel, LCG Facades, Daw Construction Group



FLOOR COVERINGS
OFFICE FURNITURE
INTERIOR DESIGN
WINDOW COVERINGS
ARCHITECTURAL PRODUCTS
DOORS & DOOR HARDWARE
STOREFRONT & INTERIOR GLASS
SPECIALTY & RESTROOM PRODUCTS

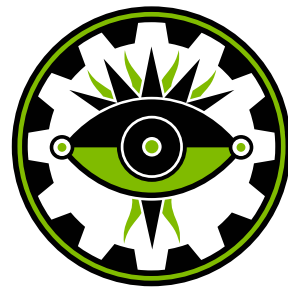


Midwest
D-VISION SOLUTIONS



BOUNTIFUL
GLASS

801.377.4355 | www.d-visionsolutions.com



VISION GRAPHICS

THE INTERMOUNTAIN WEST'S LARGEST PROVIDER OF ENVIRONMENTAL GRAPHICS.



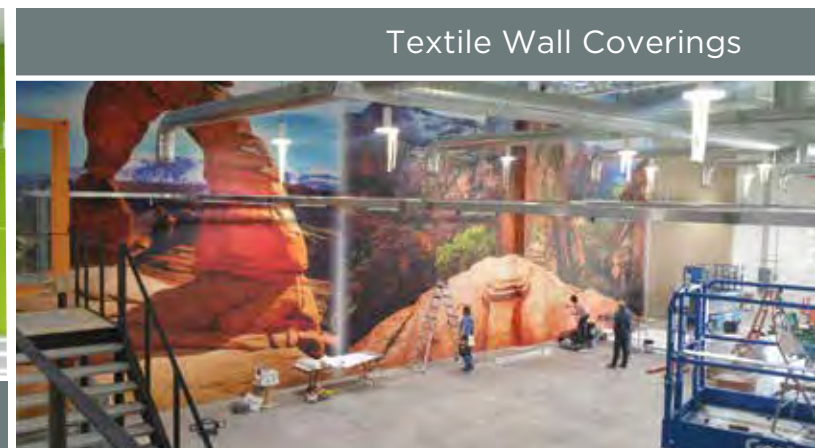
Window Graphics



ADD SBR/VISION GRAPHICS TO ALL OF YOUR BID LISTS!



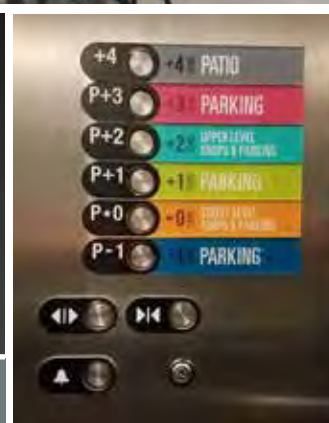
Solid and Cut Vinyl Wall Graphics



Textile Wall Coverings



Dimensional Letters



Wayfinding and
Other Signage



UC&D

Outstanding Projects of 2018



Most Outstanding Small Healthcare Project **Wasatch Mental Health**

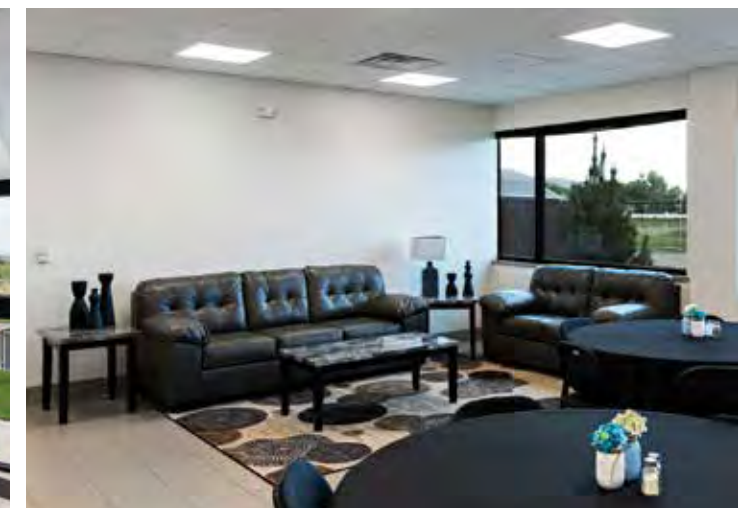
This three-story, 25,000 square foot building is a boon for the greater Payson community, providing space for Wasatch Mental Health, and other programs geared to helping women and children.

The design of this three-story, 25,000 square foot building is modern and vibrant, with warm brown masonry complimented with bright red metal wall panels and sleek

black lines in the mullions of the glazing and curtain wall system.

The valley of the butterfly roof is positioned directly above the main entrance, facilitating wayfinding from afar as a distinct reference point. Wall spaces in many of the corridors are utilized as small galleries for patient artwork as part of the therapy process.

Owner: Wasatch Mental Health
Architect: RVA Architects, Inc.
General Contractor: Ascent Construction
Electrical & Mechanical Engineer: Royal Engineering
Structural Engineer: Dynamic Structures
Civil Engineer: Excel Engineering
Electrical Subcontractor: Canyon Electric
Mechanical Subcontractor: Cofran Climate Systems
Landscape Architect: Stratton & Bratt Concrete
Other Specialty Contractors: United Structural Concrete, Lifetime Roofing, Royal



Most Outstanding Large Higher Education Project Salt Lake Community College Westpointe Workforce Training & Education Center

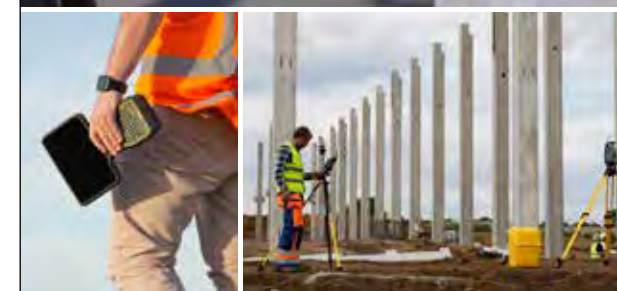
Increasing demands for labors in trade markets like construction, manufacturing and diesel mechanics make this \$43 million dollar, 121,000 square foot building an excellent investment in the state's future workforce.

The state's High Performance Building Standards were instituted on this 600 foot long building, which challenged the design team in breaking up its mass with form

and materials in a pleasing manner. This was achieved with varying exterior types, including a north clad metal wall panel system with alternating perforated and solid wall finishes.

Interior spaces, while rugged and built for industrial training, are noted by the presence of steel, glass and an abundance of natural daylighting.

Owner/Developer: Salt Lake Community College - DFCM
Architect: ajc Architects
General Contractor: Big-D Construction
Electrical Engineer: Spectrum Engineers
Mechanical Engineer: Colvin Engineering Associates
Structural Engineer: Reaveley Engineers + Associates
Civil Engineer: Meridian Engineering
Electrical Subcontractor: Wasatch Electric
Mechanical Subcontractor: Harris Mechanical



Big Screen. Giant Potential.

- Windows 10
- New Trimble Access Software
- Advanced 7-inch Touchscreen
- Rugged All-Condition Build
- Interchangeable Modules
- Exceptional Ergonomics
- Rear & Front-Facing Camera

Introducing the Trimble TSC7

Born from a 20-year legacy of industry expertise and paired with new Trimble Access software, this class-leading device delivers complete field-to-office connectivity. It's rugged. It's reliable. And it puts the entire Trimble ecosystem in the palm of your hand. *With the TSC7, you don't just see the big picture. You control it.*

Contact us today! Call: 800-821-0672



Most Outstanding Small Higher Education Project Cleone Peterson Eccles Alumni House

This prestigious University of Utah project was a complex renovation of the two-story Alumni House, a building that signifies the achievements of past students, and serves as a place where graduates can stay connected with the University. A primary goal of this renovation was creating more gathering spaces for social events.

A key design component is the locally sourced stone from Heber Valley, an ideal fit for the high desert environment, and used extensively on the exterior, in addition to select interior spaces. Rich wood veneer paneling adds a nice touch to lobby and meeting room areas, while daylighting is prominent on both levels thanks to an elegant glass curtain wall system.

Owner/Developer: University of Utah - DFCM
Architect: EDA Architects
General Contractor: Zwick Construction
Electrical Engineer: Envision Engineering
Mechanical Engineer: Colvin Engineering Associates
Structural Engineer: BHB Structural Engineers
Civil Engineer: PSOMAS
Electrical Subcontractor: Taylor Electric
Mechanical Subcontractor: K.O.H. Mechanical Contractors
Other Specialty Contractors: ArcSitio

Zwick Construction built the original Alumni House in the 70s, so it came full circle on the completion of this impressive remodel on the University of Utah campus. (photos courtesy Zwick Construction)



SEARCHING FOR PROPANE OPTIONS?

It's time you received the service you deserve.



385-499-4114

EarleLindell@Ferrellgas.com



Choose Ferrellgas and enjoy:

- **FULL** service setup
- Competitive pricing
- Temporary heat
- Superior service



Most Outstanding Highway Project Over \$10 Million

I-15; Brigham Road to Dixie Drive

This key \$25 million infrastructure project widened I-15 over the Virgin River, adding auxiliary lanes and an additional future general purpose lane in each direction, with the replacement of bridge structures, among other structural improvements. 11,000 feet of four-foot diameter jet-grouted columns were placed beneath the surface of the bridge

structures, creating a curtain for added seismic stability. A polyester concrete overlay was used to smooth the transition onto the bridges.

Aesthetics are prominent, with a split slate texture on retaining walls, along with painted wingwalls, girders, abutments and parapets; and painted, modular block walls along Pioneer Road.

Owner: Utah Department of Transportation
Lead Design Firm: Horrocks Engineers
General Contractor: Meadow Valley Contractors
Structural Engineer:
Geomorphology: JE Fuller
Geotechnical: IGES



This aerial view shows the magnitude of this \$25 million bridge/road widening project and associated challenges crews faced working over the Virgin River. (photos courtesy Horrocks Engineers)



“Mechanically Inclined”

www.kkmechanical.net

MHTN
ARCHITECTS

GARDNER COMMONS
UNIVERSITY OF UTAH

INNOVATIVE DESIGN FOR UTAH'S ACADEMIC CAMPUS
vision made **real** Higher Ed • Health Care • Commercial • K-12 • Interiors • Civic • Mixed Use • Landscape • Planning

www.mhtn.com

Most Outstanding Highway Project Under \$10 M SR-270; 9th South Connector Bridge Rehabilitation

This \$4.1 million bridge rehab included demolition of existing structure, with a new deck constructed on existing steel girders with 95 precast concrete panels that were post-tensioned and grouted together after being set to grade. Crews also performed extensive structural concrete repairs and carbon fiber

wrapping of 20 columns and 10 bent caps, lengthening the structure's lifespan. Crews used a custom lifting tool for setting the precast deck panels to proper grade, allowing the entire deck to be placed in two days. Remarkably, the demo and reconstruction occurred in only 40 days.

Owner: Utah Department of Transportation
Lead Design Firm: Utah Department of Transportation
General Contractor: Gerber Construction
Structural & Civil Engineer: Utah Department of Transportation
Electrical Subcontractor: Skyline Electric
Other Specialty Contractors: Gateway, Jacobsen Excavation, Staker Parson Companies, Wagstaff Crane



Most Outstanding Hospitality/Resort Project One Empire Pass

Amenities at this luxurious \$41 million dollar ski-in/ski-out condominium complex at Deer Valley are off-the-hook, as the 29 private three- and four-bedroom residences offer spacious balconies, floor-to-ceiling glass in each space, unparalleled views from the outdoor spa deck, a modern fitness facility, a sun lounge, and a stunning

grand lobby in the main complex.

The exterior was complex and detailed, with a mix of elements including stone veneer, cedar siding, rugged timber and state-of-the-art fiberglass glazing systems. Interior finishes are warm and inviting, with exotic wood paneling and flooring consistent with five-star resort properties.

Owner: East West Partners
Architect: IBI Group
General Contractor: Jacobsen Construction
Electrical Engineer: Envision Engineering
Mechanical Engineer: CCI Mechanical
Structural Engineer: Dunn Associates, Inc.
Civil Engineer: Alliance Engineering Inc.
Electrical Subcontractor: Hunt Electric
Mechanical Subcontractor: Archer Mechanical
Other Specialty Contractors: RJ Masonry, UTR Roofing, Boswell Wasatch, Grow Painting



Magnificent views are ubiquitous in this posh Deer Valley resort project that includes 29 luxurious ski-in/ ski-out condominiums with top shelf amenities and finishes throughout. (photos courtesy Jacobsen Construction)

WHERE WE STAND OUT VS ALL OTHERS... IN THE FIELD !



TALENTED • CREATIVE • RESPONSIBLE

Salt Lake City | St. George

Utah's Premier Design-Build Mechanical Since 1961

UPS WESTERN REGIONAL HUB

AWARDED 2018

'MOST OUTSTANDING
SPECIALTY CONTRACTOR:
ELECTRICAL'

by Utah Construction & Design



Hunt Electric
Deployed 7 of 8
In-House Divisions



UC&D

Outstanding Projects of 2018

Most Outstanding Industrial Project UPS Regional Operations Facility

The superlatives of this ginormous 840,000 square foot facility on a 160-acre site in Salt Lake's northwest quadrant are many, and deservedly so. With a construction cost of \$80 million, and a whopping overall price of \$275 million, this is U-P-S's largest hub in the Northwest U.S., and the first of what should be many future projects in the much-hyped Inland Port development.

Crews performed yeoman-like work in erecting 25-foot tall tilt-up concrete panels

at an average clip of 40 panels per day, on a building perimeter that measures a staggering 1.3 miles.

The facility's central core parcel building is connected to five outbound distribution hubs – which are supported by a network of 32 independent office spaces within the larger hub. The facility can process a mind-boggling 69,000 packages per hour!

Owner: United Parcel Service, Atlanta GA
Architect: Babcock Design
General Contractor: Layton Construction
Electrical Engineer: Hunt Electric
Mechanical Engineer: David L. Jensen & Associates
Structural Engineer: Dunn Associates, Inc.
Civil Engineer: Dominion Engineering Associates
Electrical Subcontractor: Hunt Electric
Mechanical Subcontractor: DB Mechanical
Masonry Contractor: IMS Masonry
Other Specialty Contractors: Architectural Building Supply, Fire Engineering Company, Geneva Rock Products, Morgan Asphalt, Newman Construction, Robinson Brothers Construction, Standard Drywall, Superior Roofing, Universal Painting

UPS Western Regional Hub - Salt Lake City, UT
Capable of processing 600+ million packages annually!

160-Acre Site
840,000 Sq. Ft.

On Site Truck Wash,
Maintenance Facility & Auto Shop

12MW
Substation

Providing powerful solutions for 30+ years!

HUNT ELECTRIC, INC.
UTAH & COLORADO

HuntElectric.com

CONNECT WITH US!



Most Outstanding K-12 Project Farmington High School

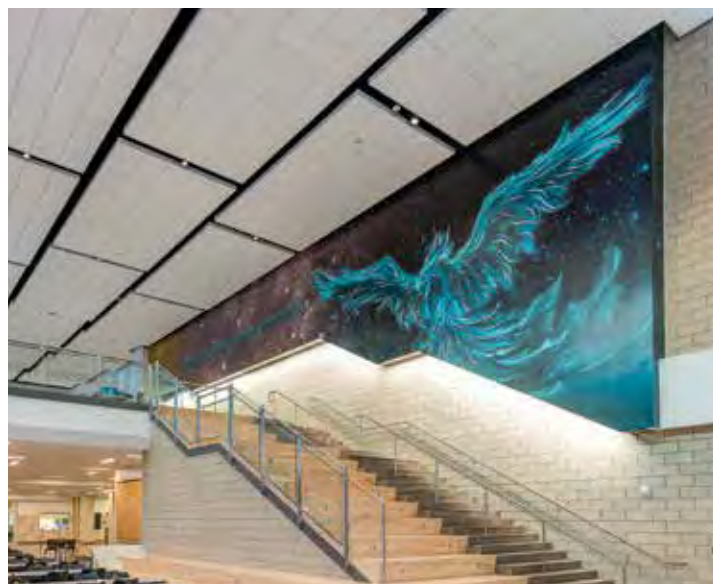
This \$75 million dollar, state-of-the-art high school combines innovative design elements with an emphasis on 21st Century functionality associated with 'future learning environments'. These flexible spaces can be adapted into varying classroom sizes, part of today's modern teaching styles.

Large bright yellow panels and a dramatic glass curtain wall highlight the

main lobby of this impressive 405,000 square foot building. The exterior features playful checkerboard patterns and a unique stepped down massing on the west side.

Solar panels were placed atop new bus canopies rather than the roof, and will generate the bulk of the school's power, one key aspect of the school's overall sustainability.

Owner: Davis School District
Architect: VCBO Architecture
General Contractor: Hogan & Associates Construction
Electrical Engineer: Envision Engineering
Mechanical Engineer: Van Boerum & Frank Associates
Structural Engineer: Calder Richards Consulting Engineers
Civil Engineer: Caldwell Richards Sorensen
Electrical Subcontractor: Taylor Electric
Mechanical Subcontractor: O&M Plumbing & Heating
Landscape Architect: ArcSitio
Other Specialty Contractors: AK Masonry, Steel Encounters, JT Steel



THE ANSWER

TO ALL OF YOUR CONSTRUCTION NEEDS



» ASPHALT » SAND & GRAVEL » EXCAVATION & UNDERGROUND » READY MIX

KILGORE

COMPANIES



» EDUCATE » TRAIN » PLAN » ENGAGE » EXECUTE



o. 801 250 0132 | www.kilgorecompanies.com | f. 801 250 0671





Vibrant colors and natural daylight bring an open, airy ambience to Farmington High School, a \$75 million project for Davis School District that fits the District's recent model of building NetZero Emission K-12 schools. (photos courtesy Hogan & Associates Construction)



KNOWLEDGE EXPERIENCE COMMON SENSE

Craig Coburn* Jack Reed Lincoln Harris Brian Bolinder Samantha Wilcox

SERVING UTAH'S DESIGN PROFESSIONALS AND CONSTRUCTION INDUSTRY SINCE 1983

**RICHARDS
BRANDT
MILLER
NELSON**
A Professional Law Corporation

Professional & Business Risk Management
Contracts Review/Drafting/Enforcement
Design/Construction Defects & Disputes
Mechanics Liens; Bonds
Government Procurement
Mediation/Arbitration/Litigation/Appeals
Business Organization & Continuation
Mergers & Acquisitions

Employment/Labor; ERISA
Immigration
Criminal Defense
Estate/Tax Planning; Trusts
Family Law
Real Estate; Leases
Land Use & Development
Personal Injury

299 So. Main Street | 15th Floor | Salt Lake City, Utah 84111
801.531.2000 | www.rbmnl.com

*Hon. AIA Utah, General Counsel AIA Utah and Special Counsel ACEC Utah Since 1985

We are, by design,
regenerating our world.

ARCH | NEXUS

Most Outstanding Multi-Family Project The Zeller Apartments

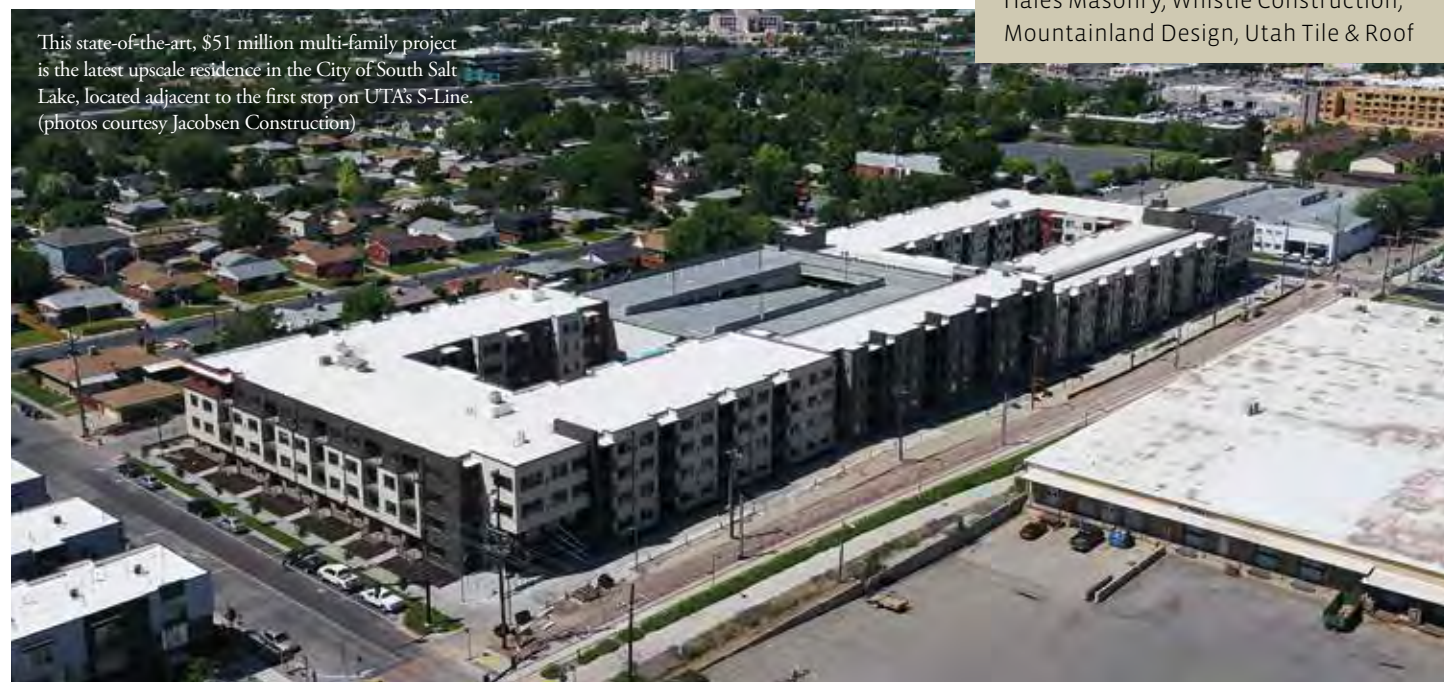
This \$51 million dollar, 293-unit transit-oriented development is part of the transformation of South Salt Lake into a city with a centralized, hip downtown area within walking distance of TRAX. This high-density housing project includes top-shelf amenities, including a spacious courtyard pool and patio, rooftop lounge, fitness

center, communal rec spaces, a business center and much more.

Color palettes are dominated with warm, rich earth tones; the main two-story lobby has a comfortable, modern feel. Exterior finishes are dominated by brown, beige and rust-colored paneling.

Owner: Zellerbach Owner LLC
Architect: Architectural Nexus
General Contractor: Jacobsen Construction
Electrical Engineer: Hunt Electric
Mechanical Engineer: KHI Mechanical
Structural Engineer: Petra Engineering
Civil Engineer: PSOMAS
Electrical Subcontractor: Hunt Electric
Mechanical Subcontractor: KHI Mechanical
Other Specialty Contractors: Zitting Brothers Construction, Morgan Asphalt, Nicholson Construction, Troy Hales Masonry, Whistle Construction, Mountainland Design, Utah Tile & Roof

This state-of-the-art, \$51 million multi-family project is the latest upscale residence in the City of South Salt Lake, located adjacent to the first stop on UTA's S-Line. (photos courtesy Jacobsen Construction)



Forterra is the leader in advanced precast solutions.

When you're a pioneer in the concrete precast industry, you learn a few things. Like how to innovate customized architectural solutions backed by years of experience and advanced engineering support. We provide a range of products, from sports stadiums and parking structures to bridges and malls. We combine strength, design flexibility and rapid construction to offer a greater return on investment. At Forterra, we have the knowledge to get it right and the strength to make it last.



forterrabp.com
T: 801.966.1060

Most Outstanding Municipal Project Salt Lake City Fire Station No. 3

Station No. 3 is the second Net Zero Energy fire station completed this year for owner Salt Lake City, opening in October to rave reviews from fire fighters and the general public. The nearly \$9 million dollar, 18,000 square foot project has many similar design and sustainability features as its sister station No. 14 – including a 108-kilowatt rooftop solar

array, a super-insulated building envelope, high-performance windows, and modern-looking bright red doors for the fire bays.

High-performance G-F-R-C concrete paneling and patinated zinc metal cladding will age gracefully over time, grounding the building to its Sugar House location adjacent to Forest Dale golf course.

Owner: Salt Lake City Corporation
Architect: Blalock and Partners
General Contractor: Wadman Corporation
Electrical Engineer: Spectrum Engineers
Mechanical Engineer: Van Boerum & Frank Associates
Structural Engineer: G Brown Design, Inc.
Civil Engineer: Andersen Wahlen & Associates
Electrical Subcontractor: Neuwave Electric
Mechanical Subcontractor: KR Plumbing



Salt Lake City's second NZE fire station is a graceful addition to the City's Sugar House neighborhood, and features a community gathering area to foster interaction between EMT/fire fighters and the local public. (photos courtesy Wadman Corporation)



PROUD TO HAVE CONTRIBUTED OUR NET ZERO EXPERTISE
to several of this year's Most Outstanding Projects

Salt Lake City Fire Station 14
"Most Outstanding Green/Sustainable Project"

VAN BOERUM & FRANK ASSOCIATES, INC.
CONSULTING ENGINEERS

SALT LAKE CITY | LOGAN | PHOENIX | ST. GEORGE
VBF.COM | (801) 530-3148

Fueling Facility, Maui, HI

Neff Meter Station, CO

Worldport Fuel Facility, KY

Above Ground Piping and Linear Replacement, NM

Combined Heat and Power Plant, CA

THE BETTER WAY TO BUILD

Solutions to the oil, gas, technology, power, and mining industries.

BODELL
construction

www.bodellconstruction.com

Mountain Plains Division
1929 Skyview Drive
Casper, WY 82601
Tel: 307.237.3380

Corporate Office
586 Fine Drive
Salt Lake City, UT 84115
Tel: 801.261.4343

Hawaii Division
550 Paiea St., Suite 228
Honolulu, HI 96819
Tel: 808.537.1826

In business since 1972

THE STRENGTH BEHIND YOUR VISION

While much of our work may be hidden from view, the approach Reaveley takes to structural engineering can't be missed. We emphasize project objectives, anticipate needs, and put our energy behind innovative ways to achieve your goals.

Visit our new website at Reaveley.com

REAVELEY
Engineers

North Sixth, Salt Lake City, UT

imagine innovate inspire

4th West, Salt Lake City, UT

Startup Crossing, Provo, UT

4th West, Salt Lake City, UT

Concept Rendering

Architecture
Belgique, Inc.
www.archbelgique.com

Outstanding Projects of 2018

Most Outstanding Municipal/Utility Project

Roosevelt City State Street & Maintenance Project

This \$2.7 million dollar project wrapped up in September, providing much-needed relief from previous flooding issues on the corner of Meadowbrook and State Street in Roosevelt, including a 100-year flood event in 2016.

In order to increase stormwater capacity, crews installed a new 48-inch culvert, and also built new curb, gutter and sidewalk over a nearly one-mile stretch of State Street. Warm mix asphalt was utilized for the pavement, which achieved excellent degrees of smoothness and flatness.

Owner: Roosevelt City
Lead Design Firm: CIVCO Engineering, Inc.
General Contractor: Burdick Materials
Civil Engineer: CIVCO Engineering, Inc.
Other Specialty Contractors: BHI

Most Outstanding Private Project Over \$10 M

Mountain America Credit Union Office Building

Downtown Sandy City has a prominent new addition to its burgeoning skyline – this visually stunning, 11-story office tower that serves as Mountain America’s headquarters.

The most obvious attraction of this 327,000 square foot building is its unitized curtain wall system – featuring high-performance glass manufactured locally by Viracon’s St. George plant.

The glass was upsized from six to eight

millimeters and offers high reflectivity, insulation and sound attenuation values. The 12-inch vertical aluminum fin layout is an attractive visual element, with fins that are dense at the base, and more widely spaced at the top.

Interior spaces are rich and vibrant, offering a modern, eclectic feel with sharp, clean lines and prominent daylighting throughout.

Owner/Developer: Mountain America Credit Union / Developed by Gardner Company

Architect: WRNS (Core and Shell, Parking, and Site), Method Studio (Tenant Improvement)

General Contractor: Okland Construction

Electrical Engineer: Spectrum Engineers

Mechanical Engineer: PVE

Structural Engineer: BHB Structural Engineers

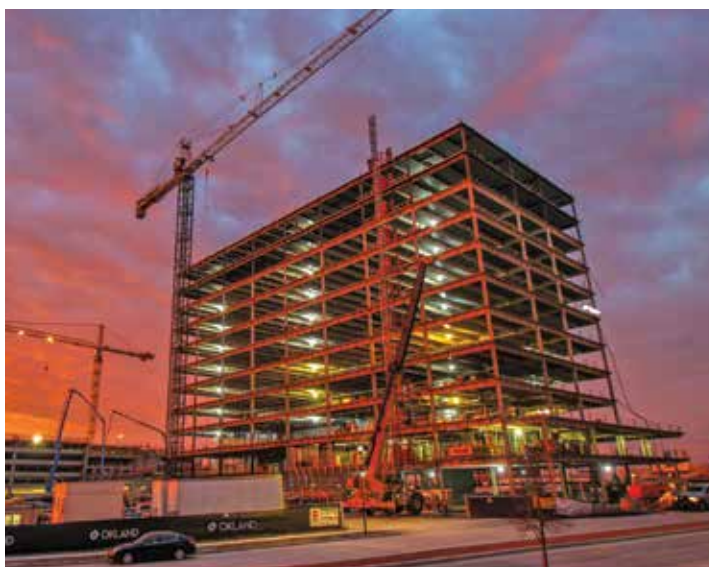
Civil Engineer: Ensign Engineering

Electrical Subcontractor: Rydalch Electric

Mechanical Subcontractor: Shamrock

Other Specialty Contractors: Ceiling Systems, Steel Encounters, Atlas Sheet Metal, Sure Steel, GEM

The superlatives are many on this impressive 11-story commercial office building, the tallest structure in Sandy City. The glass/curtain wall system is one of the more intricate and flat-out impressive exteriors to grace the south end of the Salt Lake Valley. (photos courtesy Okland Construction)



Most Outstanding Private Project Under \$10 M Rock Loft

This center portion of this quaint \$1.7 million dollar building in Fruit Heights was originally built in 1944 by the Jost family and used for decades to support a large cherry harvesting operation. The building was renovated into a multi-use lease space for office and retail businesses, including the successful start-up Mountain Ops. The 10,000 square foot space was revamped with efficient new mechanical

and electrical systems, and rustic finishes with natural finishes and an appealing rustic charm. Weathered barnwood, hardwood floors, glass office fronts with large windows, and a rock fireplace are prominent features.

The rugged stone exterior is a perfect match next to the mountainside to the east and offers long-term durability.

Owner: Burt & Tim Matthews
Architect: Design West Architects
General Contractor: Ascent Construction
Electrical Engineer: Rocky Mountain Consulting Engineers
Mechanical Engineer: Van Boerum & Frank Associates
Structural Engineer: BHB Structural Engineers
Civil Engineer: Forsgren Associates
Electrical Subcontractor: CR Lighting & Electric Inc.
Mechanical Subcontractor: CFM Heating and Air
Other Specialty Contractors: North Face, Rocky Mountain, MC Green and Sons



Most Outstanding Public Project Over \$10 M Salt Lake County District Attorney Office Building

This combined \$64 million dollar project was 30 years in the making and featured two office buildings for the D.A.'s office, a 28,000 square foot building in West Jordan, and the flagship 113,000 square foot headquarters in Salt Lake City which is highlighted with a one-of-a-kind art glass feature entitled 'Words We Live By'.

The glass curtain wall system is lively and entertaining, with prominent reflective colors of blue, green and purple. Transparency was a critical design element in the floorplan, with offices laid out in an open, collaborative environment, and daylighting a primary consideration for even the most core interior spaces.

Owner: Salt Lake County District Attorney's Office

Architect: MHTN Architects

General Contractor: Jacobsen Construction

Electrical Engineer: Spectrum Engineers

Mechanical Engineer: Van Boerum & Frank Associates

Structural Engineer: Reaveley Engineers + Associates

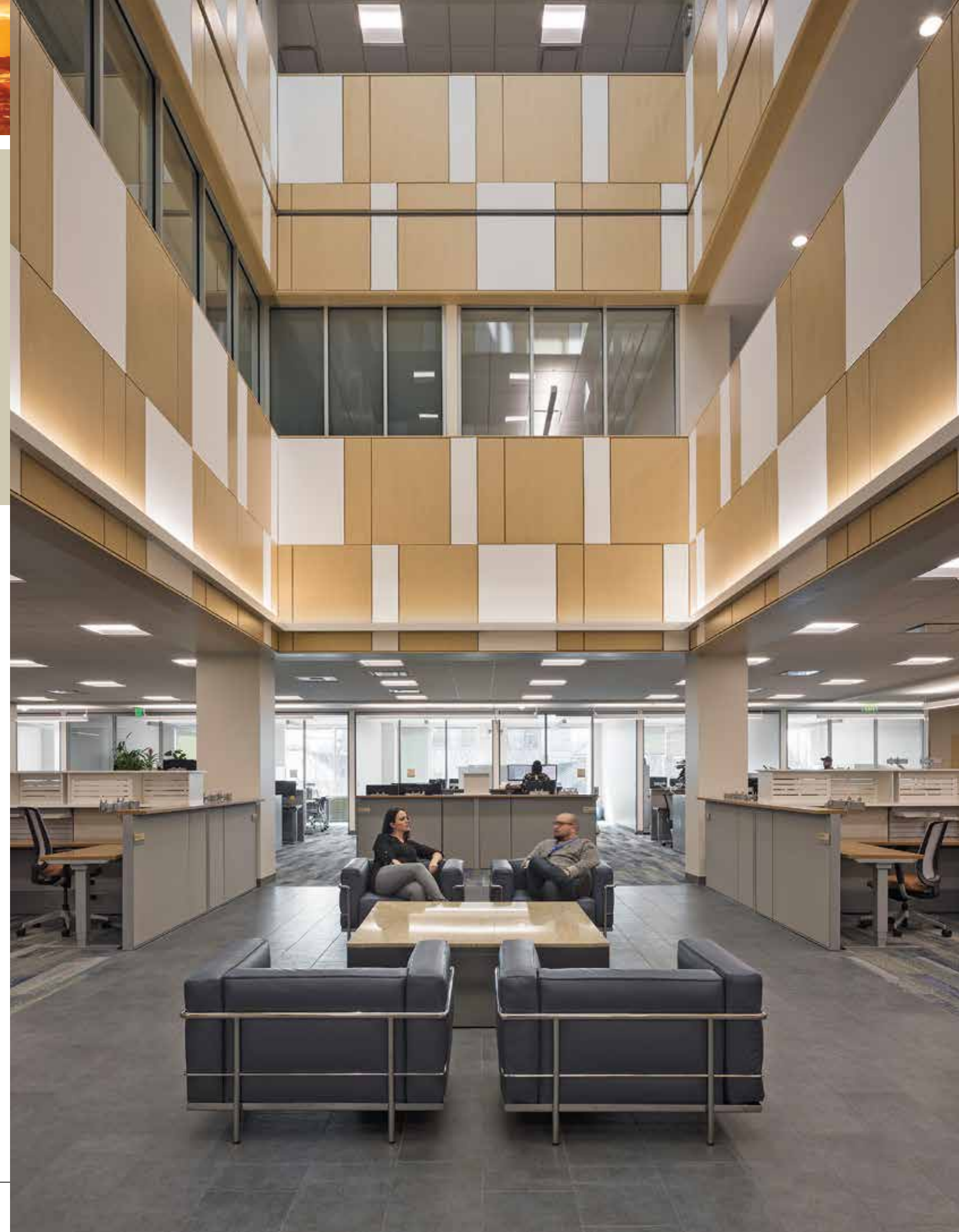
Civil Engineer: PEPG Consulting

Electrical Subcontractor: Rydalch Electric

Mechanical Subcontractor: Alternative Mechanical

Masonry Subcontractor: Troy Hale Masonry

Other Specialty Contractors: Cives Steel, KEPCO, Engineered Wall Systems, Alpine Drywall, Noorda



Most Outstanding Public Project Under \$10 M

Battle Creek and Grove Creek Debris Basin Rehabilitation

This \$3.7 million dollar project for North Utah County Water Conservancy District included the installation of new 12-inch H-D-P-E drainage pipelines, new reinforced concrete spillway structures, embankment construction, and placement of geosynthetic clay liners at these debris basins in Pleasant Grove.

The design of the labyrinth weir wall will allow each basin to be filled to max capacity without potential danger to the dam itself. Screed rails were set in floor sections 50 feet wide and 30 to 40 feet long, with a Bunyan rolling screed used to level concrete on the 2 to 1 slope.

Owner: North Utah County Water Conservancy District
Lead Design Firm: RB&G Engineering, Inc.
General Contractor: Gerber Construction
Structural & Civil Engineer: RB&G Engineering, Inc.
Geotech: Bedke Geotechnical Field Services
Other Specialty Contractors: Mt. States Fence, Harris Rebar/Iron Mountain




Customized solutions that
Impact your business.

Does your agent make you a better risk?

What tools does your agent bring to improve your company's risk management process? Contractors have a lot of responsibilities throughout every project. The CSDZ Contractors Program focuses on the exposures of contractors of all sizes and types.

Call us. We're local. We'll help you get protection that fits you best, with more resources to support your needs.

5 Triad Center, Suite 340, Salt Lake City, UT 84180
 Phone: 801-537-7467 Website: csdz.com



cobb strecker dunphy & zimmermann

Contributing to Our Partners Success

CONSTRUCTION IS OUR BUSINESS, BUT WE MAKE IT PERSONAL



R&O CONSTRUCTION

When we look to the future, we don't aim to be the biggest general contractor. We aim to be the general contractor that is big enough to handle the needs of any project. The secret to our success is that we do not differentiate between large and small. We believe every client and every project deserves the same level of service and attention to detail. Every project we undertake is critical to our clients and our commitment is to treat them that way. Your project is *big enough* for us to treat it like it is our most important project.

801.627.1403

Big Enough

randoco.com

UC&D

Outstanding Projects of 2018

Publisher's Pick

Sorensen Legacy Foundation Center for Clinical Excellence

This visually-dynamic, \$29 million dollar facility at Utah State University is the first center of its kind in the Mountain West that provides comprehensive clinical services across the human lifespan. The integration of academic, research and clinical service space is key for USU faculty doing this important research.

The building's unique envelope includes an array of contrasting materials like

masonry and colorful paneling blue-green paneling. The 'Healing Gardens' area serves as a reference point between the center's two primary wings, providing a soothing, contemplative environment. The two wings are angled apart from one another, with a design intent of breaking down the scale of the building through the vertical separation of levels.

Owner: Utah State University - DFCM
Architect: Jacoby Architects
General Contractor: R&O Construction
Electrical Engineer: Envision Engineering
Mechanical Engineer: WHW Engineering
Structural Engineer: Reaveley Engineers + Associates
Civil Engineer: Cache Landmark Engineering
Electrical Subcontractor: Cache Valley Electric
Mechanical Subcontractor: CCI Mechanical
Masonry Subcontractor: Shane Demler Masonry
Food Service Consultant: Jedrzejewski Designs
Other Specialty Contractors: Millcreek Tile and Stone, Mollerup Glass Company, Rocky Mountain Steel Services



Most Outstanding Renovation/Restoration Project Over \$10 M

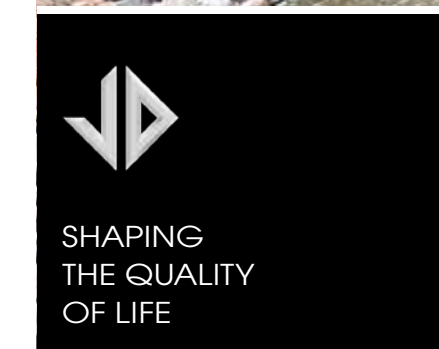
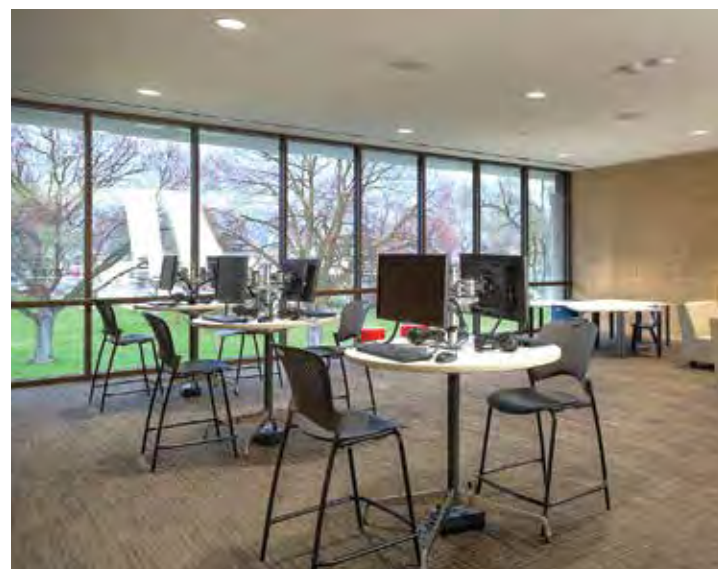
Weber County Library - Main Branch

This \$12.4 million project renovated the 55,000 square foot main branch, recognized as one of Utah's finest example of mid-century modern architecture, built in 1968. Crews preserved the original character of the building, while reinventing its interior spaces with modern systems, seismic upgrades, an improved thermal envelope, better air quality and

acoustic performance, and universal ADA accessibility.

Fiber reinforced polymer tied the precast concrete floor and roof tees together to create a diaphragm, then tied it to the walls of the building. An underground addition was built to house MEP systems.

Owner: Weber County Library
Architect: EDA Architects
General Contractor: Wadman Corporation
Electrical Engineer: Spectrum Engineers
Mechanical Engineer: Colvin Engineering Associates
Structural Engineer: ARW Engineers
Civil Engineer: Great Basin Engineering
Electrical Subcontractor: MCL Electric Inc.
Mechanical Subcontractor: KR Plumbing & Mechanical



SHAPING
THE QUALITY
OF LIFE



Most Outstanding Renovation/Restoration Project Under \$10 M

Ken Garff Volkswagen

This \$2.9 million dollar renovation puts a fresh new face on this long-time Orem dealership, with a crisp, clean exterior look along the University Parkway corridor, highlighted by an energy-efficient glazing and curtain wall assembly accented by backlit, white aluminum composite panels. The exterior features aluminum metal composite panels accented with masonry, stucco and glazing.

The interior showroom is modern and contemporary, illustrating clean lines and a simple white, gray and wood color palette, while offering customers comfortable, modern seating areas with many amenities. Energy efficient upgrades include L-E-D light fixtures, high-efficiency evaporative coolers, and the envelope's improved thermal properties.

Owner: Ken Garff Automotive Group
Architect: VW Das Auto + Eview360 + Curtis Miner Architecture (local Architect)
General Contractor: United Contractors
Electrical Engineer: Spectrum Engineers
Mechanical Engineer: Van Boerum & Frank Associates
Structural Engineer: Dynamic Structures
Civil Engineer: Benchmark Engineering & Land Surveying, LLC.
Electrical Subcontractor: GSL Electric
Mechanical Subcontractor: Lone Wolf Mechanical
Other Specialty Contractors: Sobotec Inc., Wall2Wall Flooring, CBRE



CRSA

Jeff Adams Rachael Bangerter
 Catherine Bhaskar Steve Beesley
 Jeff Cramer Cali Centurion Wally Cooper
 Melissa Fryer Scott Gilberg Robert Holman
 Mindy Luthi Harold Martinez-Morales Todd McBride
 Paul Norsworthy
 Lindsey Pate Susie Petheram Penny Phillips
 Brandon Pullin Laura Reid
 Trenton Saxton Carlos Set
 Laura Smith Sara S
 David T

A Leader Among Equals

Ben Rogers | President, CRSA

CRSA Architecture | Planning | Landscape Architecture | Interiors | www.crsa-us.com

Most Outstanding Restaurant Project Campos Coffee Roastery & Kitchen

This hip, \$1.5 million dollar renovation project on Edison Street between 2nd and 3rd South in downtown Salt Lake City is the first U.S. café and roastery for the Australian-based coffee company, which has seven locations in three major Aussie cities.

It was determined the existing 1900's historic brick service building was salvageable. It was done with the

addition of sawtooth clerestory windows, expressive Glu-Lam wood framing, corrugated metal siding and stucco, and an operable 'airplane hangar' folding window system.

The design celebrates the textures of the historic space – including brick and concrete block, an exposed wood ceiling, and steel hangar windows.

Owner: Campos Coffee
Architect: Lloyd Architects
General Contractor: Hansen & Spoor Construction
Electrical & Mechanical Engineer: Royal Engineering
Structural Engineer: Matt Jackson Structural Engineers
Civil Engineer: Dominion Engineering
Electrical Subcontractor: Kupferschmidt
Mechanical Subcontractor: Select Comfort
Other Specialty Contractors: Project Sunday (millwork/furniture), Root'd (interior design)



ARCHER MECHANICAL YOUR PARTNER IN THE MECHANICAL INDUSTRY

Providing the contracting team and owners; collaborative efforts, firm commitments, intuitive solutions and consistent results.



ARCHER

EXCELLENCE
QUALITY
INNOVATIVE
INTEGRITY



P : 801 250 4080
F : 801 250 3983

2745 WEST CALIFORNIA AVE
SALT LAKE CITY, UT 84104

ARCHERMECH.COM

Most Outstanding Specialty Contracting – Electrical UPS Regional Operations Facility

The electrical contract for this massive project topped \$12.5 million dollars and required a herculean effort to complete the majority of in less than eight months. Six of eight divisions by the contractor were utilized on this facility. The team designed and built a 12 Megawatt substation with two 10 MVA transformers, in addition to

the public safety infrastructure to ensure connectivity to first responder radio systems.

Crews wired over one-thousand fiber optic terminations, a high-tech wi-fi system throughout the 840,000 square foot building, and a complex CCTV camera system for all in-house security.

Owner: United Parcel Service, Atlanta GA
Architect: Babcock Design
General Contractor: Layton Construction
Electrical Engineer: Hunt Electric
Mechanical Engineer: David L. Jensen & Associates
Structural Engineer: Dunn Associates, Inc.
Civil Engineer: Dominion Engineering Associates
Electrical Subcontractor: Hunt Electric
Mechanical Subcontractor: DB Mechanical



WE BUILD SOLUTIONS

Serving the construction industry's legal needs with over 200 years combined experience





BABCOCK SCOTT & BABCOCK, P.C.
ATTORNEYS & COUNSELORS AT LAW | WE BUILD SOLUTIONS

370 East South Temple, 4th Floor
Salt Lake City, UT 84111
801-531-7000
www.babcockscott.com

Most Outstanding Specialty Contracting – Masonry

Ira A. Fulton College of Engineering Building

The masonry on this south campus project that renovated the original Clyde Engineering building is something special, with a unique combination of varying materials, including brick, ACM panels, curtain walls systems, punch windows, and precast.

The 200,000 square foot, five-story building at Brigham Young University includes longer, slender brick draws on

horizontal lines, with low life cycle costs and solid durability. Cordova stone was used, offering the look and feel of a more costly natural limestone. Precast bands, sills and wall caps provide additional details that emphasize color hues and detail sculptural characteristics, illustrating the true masonry craftsmanship on this project.

Owner: Brigham Young University
Architect: VCBO Architecture
General Contractor: Jacobsen Construction / Span Construction - Joint Venture
Electrical Engineer: Envision Engineering
Mechanical Engineer: Colvin Engineering Associates
Structural Engineer: Dunn Associates, Inc.
Civil Engineer: Meridian Engineering
Earthwork & Utilities: Sunroc Corporation
Masonry Subcontractor: IMS Masonry



Intermountain Kem C. Gardner Transformation Center



Those who **lead**, innovate.



JACOBSEN

Making life better.

jacobsenconstruction.com | 801.973.0500

Most Outstanding Specialty Contracting - Mechanical

Carolyn and Kem Gardner Commons

Located in the heart of the University of Utah campus, this magnificent 209,000 square foot project replaces the former Orson Spencer Hall, one of the oldest campus buildings, and will serve as the primary home to the College of Social and Behavioral Science. It includes a new welcome center, 33 classrooms, two auditoriums, collaborative lab facilities and student study spaces.

This \$6.5 million mechanical contract utilizes geothermal heating, with central campus cooling, which provides a more energy-efficient solution as the building aims for LEED certification. The water-cooled VRF system is the first of its kind on the campus, and required careful coordination during installation.

Owner/Developer: University of Utah - DFCM
Architect: MHTN Architecture
General Contractor: Okland Construction
Electrical Engineer: Envision Engineering
Mechanical Engineer: Colvin Engineering Associates
Structural Engineer: BHB Structural Engineers
Civil Engineer: PSOMAS
Electrical Subcontractor: Cache Valley Electric
Mechanical Subcontractor: Archer Mechanical
Other Specialty Contractors: ISCE (lab work)



THE RIGHT CHOICE

FOR CONNECTION CONSTRUCTION



Over 35-Years of industry leading, award winning projects

Education - Medical - Commercial - Municipal - Transportation - Telecom

IN THE GROUND:

- Directional Drilling
- Microtrenching
- Plowing
- Hydro Excavation
- Fast Fusion
- Utility Construction

IN THE BUILDING:

- Structured Cabling
- Distributed Antenna (DAS)
- Security Systems
- Data Centers
- Systems Design
- Wireless Technology

“The Right Choice for Utility and I.T. Construction”

Americom™
 The Right Choice

801-892-0500
americomtech.com
sales@americomtech.com

Most Outstanding Sports/Recreation Project Zions Bank Real Academy

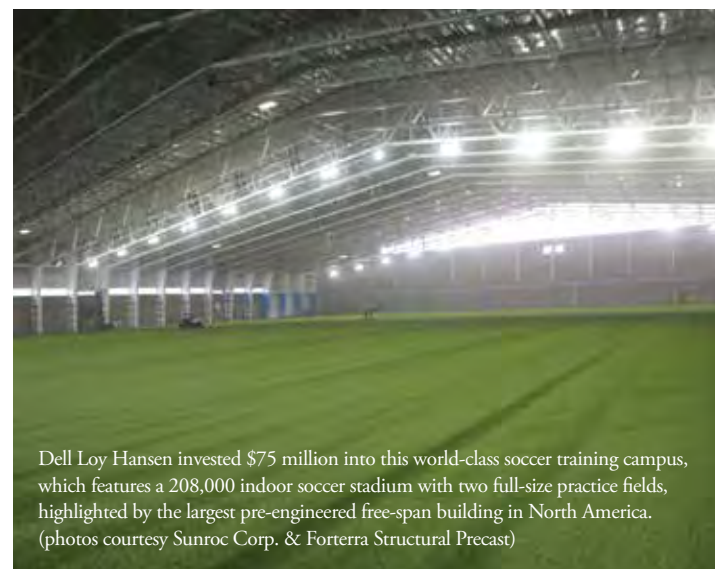
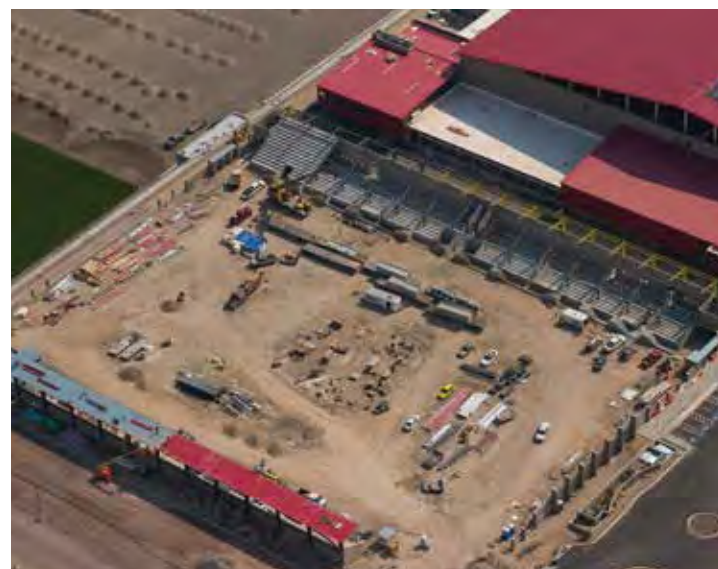
Few structures are as impressive as Dell Loy Hansen's latest addition to his burgeoning Utah soccer empire – a world-class, \$75 million dollar training academy and school in Herriman that by all accounts the crème de la crème of such facilities in the U.S.

The 47-acre campus includes a 300-student, 77,000 square foot high school and five professional-size outdoor soccer fields for Real Salt Lake's academy and professional teams. The crown jewel

is the 208,000 square foot indoor soccer training center, which features two full-size fields with unobstructed, column-free views, courtesy of the world's largest pre-engineered free-span building in North America.

The main 5,000-seat outdoor stadium includes locally manufactured precast bleachers, steps and ADA platforms, with precast erection happening in just four weeks.

Owner/Developer: Dell Loy Hansen / Real Salt Lake Soccer Club
Architect: EDA Architects
General Contractor: Wasatch Commercial Builders
Electrical Engineer & Subcontractor: Hunt Electric
Mechanical Engineer: Colvin Engineering Associates
Structural Engineer: ARW Engineers; Nucor Corp.
Civil Engineer: Infinity Consultants
Mechanical Subcontractor: Precision HVAC
Earthwork & Utilities: Sunroc Corporation
Precast Concrete Subcontractor: Forterra Structural Precast, Other Specialty
Contractors: Shamrock Plumbing, Front Line Concrete, Captial Glass, Advanced Steel Erectors, Anchor Retaining Walls



Dell Loy Hansen invested \$75 million into this world-class soccer training campus, which features a 208,000 indoor soccer stadium with two full-size practice fields, highlighted by the largest pre-engineered free-span building in North America. (photos courtesy Sunroc Corp. & Forterra Structural Precast)



Building Strong Partnerships

The Jones Waldo Construction Law Practice Group counsels clients through the entire construction process. We have experience in everything from project planning to design to litigation of claims – and we're ranked the best in the region.

JONES WALDO
Attorneys Est. 1875

JONESWALDO.COM
+801-521-3200

Salt Lake City
Park City
Provo
St. George
Chicago



Most Outstanding Tenant Improvement Project Podium

The design team created several unique, open spaces in the new Podium headquarters in the heart of Lehi's Silicon Slopes. The five-floor, 128,000 square foot building signals the arrival of this fast-growing software services firm, with a fun, trendy building offering a bevy of employee amenities. Polished concrete floors and natural wood design elements play off each other well. An innovative

bleacher staircase cuts through the first and second floor, connecting employees to other spaces of the office, and serving as stadium seating for large corporate meetings.

Areas to meet and eat were designed into each floor, along with a cross-fit gym, a bike shop, and dedicated space for the firm's legendary smash ball tournaments.

Owner: The Boyer Company
Architect: Beecher Walker
General Contractor: Okland Construction
Electrical Engineer: Hunt Electric
Mechanical Engineer: Harris Mechanical
Structural Engineer: Dunn Associates, Inc.
Civil Engineer: Ensign Engineering
Electrical Subcontractor: Hunt Electric
Mechanical Subcontractor: Harris Mechanical
Other Specialty Contractors: Cory Sistrunk (Concept Designer)



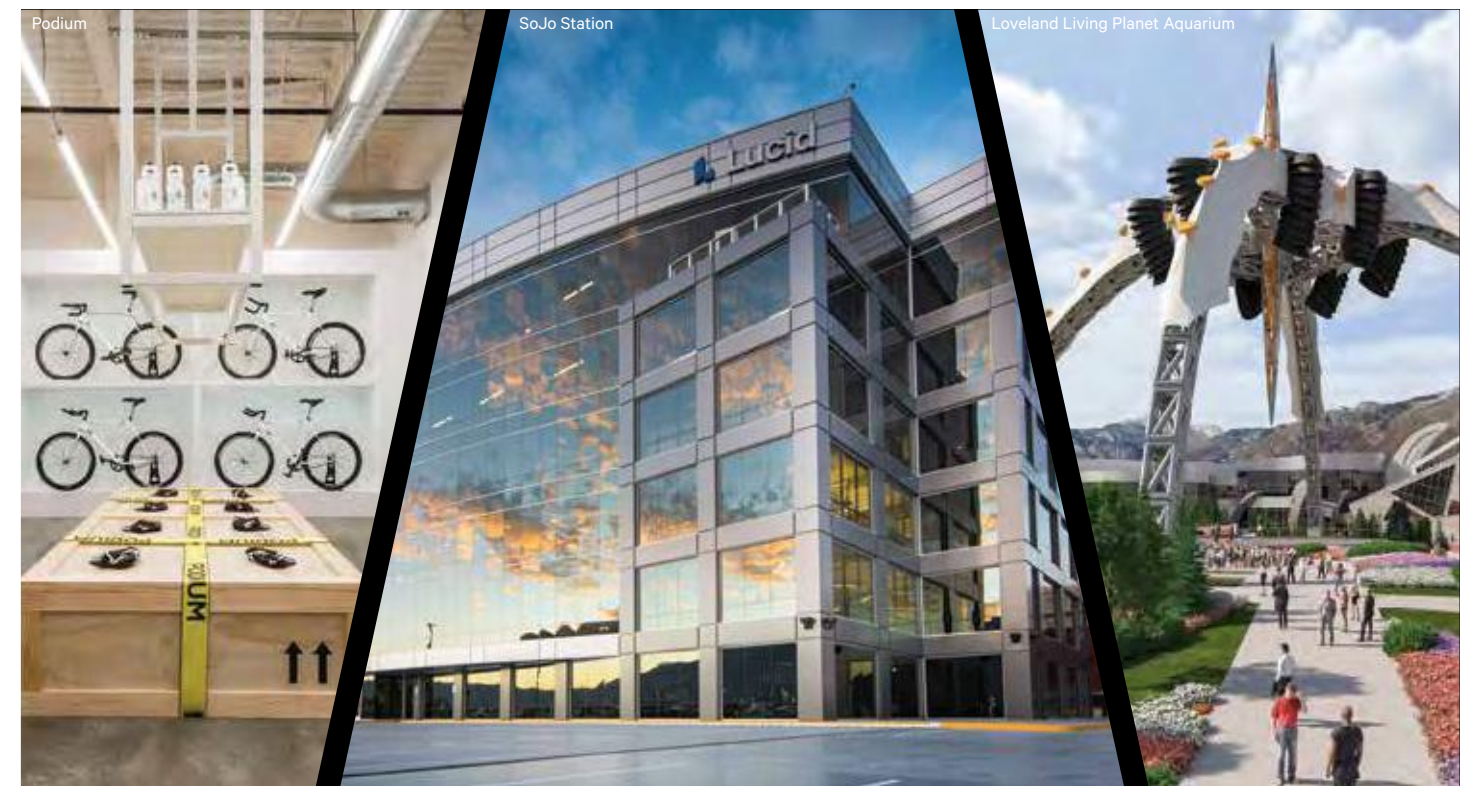
SIX GENERATIONS OF MASONRY EXCELLENCE

RED BUTTE GARDEN—WATER CONSERVATION GARDEN

UC&D 2017 MOST OUTSTANDING PROJECTS / UTAH MASONRY COUNCIL MERIT AWARD



www.childenterprises.com / 801.489.5022 / 1033 East 400 South, Springville, Utah 84663



20 years of creating imaginative spaces that truly work.
Now that's Real. Imagination.™



Beecher Walker

Architecture Interiors Planning

801.438.9500 www.beecherwalker.com

Most Outstanding Water/Wastewater Project 500 South Diversion, Phase 1 Pipeline Project

This key \$14.3 million dollar infrastructure upgrade to Salt Lake City's sewer system consisted of installing 15,000 feet of 22-inch H-D-P-E sewer force main, along with odor control and energy dissipation vaults. A 54-inch tunneled crossing of Jordan River with 25-foot shoring pits was also completed, along

with two directional drilled crossings of Redwood Road. 50-foot deep excavations for the river crossing were particularly challenging, requiring innovating construction solutions that ensured safety and timeline, while also reducing the overall budget by nearly \$1 million dollars.

Owner: Salt Lake City Corporation
Lead Design Firm: Water Works Engineers
General Contractor: Whitaker Construction
Other Specialty Contractors: HDD Wilco, Gerhart Cole Inc.




At Parr Brown, we take a hands-on approach to construction law. We're with you in the trenches and focused on getting results.

**PARR BROWN
GEE & LOVELESS**
ATTORNEYS AT LAW

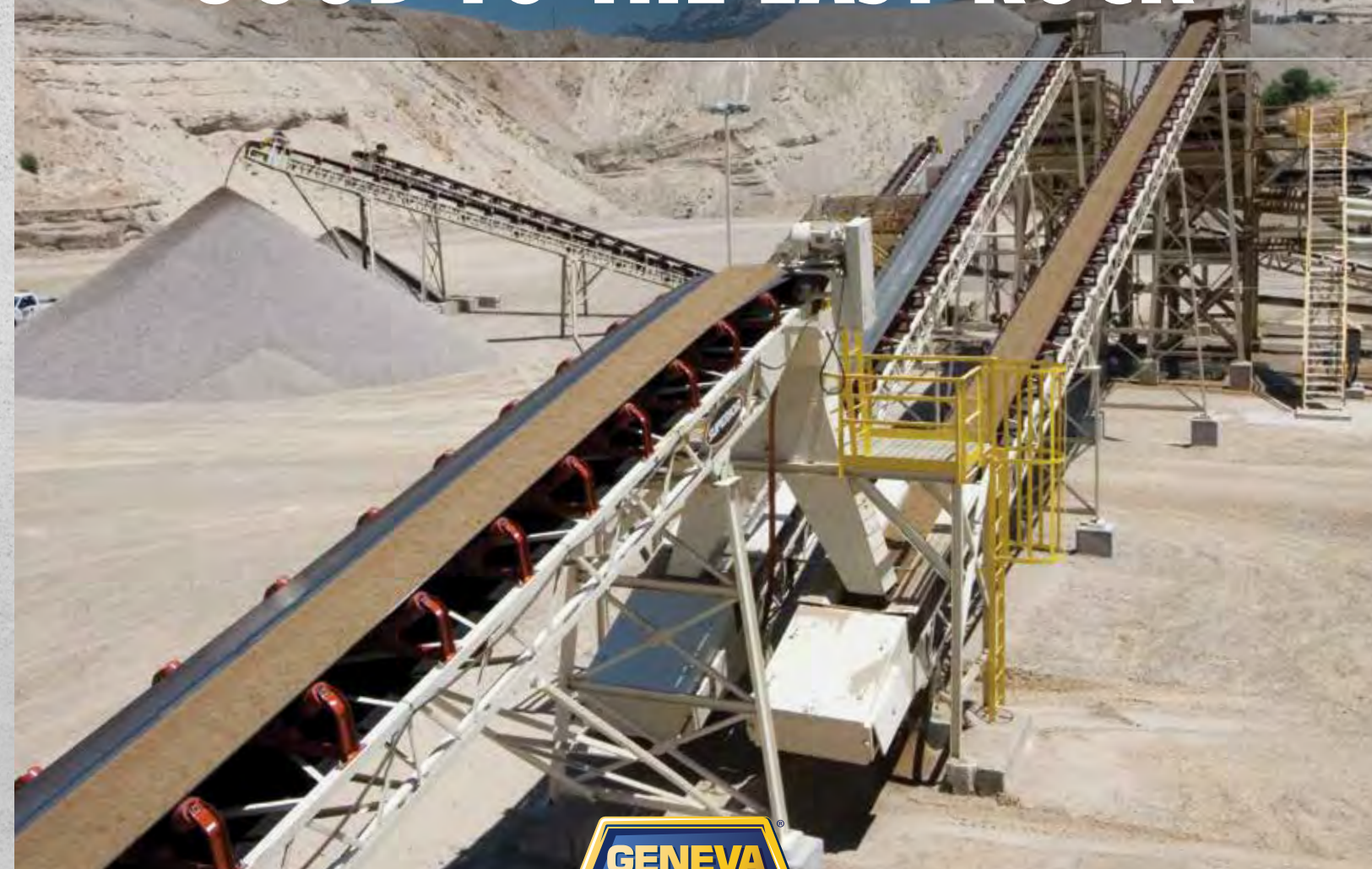
Learn more at parrbrown.com.

101 South 200 East, Suite 700
Salt Lake City, Utah 84111

WITH OUR TEAM ON SITE,
THE JOB IS DONE RIGHT.
SINCE 1973.



GOOD TO THE LAST ROCK



Geneva Rock Products Provides the Right Rock for the Right Job

By testing the materials in each of our quarries as many as 8 times a day, we ensure that our products provide reliable, high-quality results for every application. Our award-winning labs, located at each of our facilities, are AMRL and UDOT certified. At Geneva Rock Products, we test our materials to make sure that your first rock matches the same specifications as your last rock.



MORE LIFT POWER. JUST THE THING TO RAISE PRODUCTIVITY.

CASE N SERIES LOADER/BACKHOES

CASE N Series Loader/Backhoes, with our exclusive Power Lift technology, beat the competition with more capacity to lift, curl, crane and move. Our loader provides excellent breakout force and almost 1000 pounds greater lift capacity at full height than any other machine in its class. With factory-trained dealers to help increase productivity and raise expectations, the muscle to do your hard work is here. Visit your CASE dealer today.

CaseCE.com

CASE
CONSTRUCTION

Case is a trademark registered in the United States and many other countries, owned by or licensed to CNH Industrial N.V., its subsidiaries or affiliates.

CENTURY
EQUIPMENT COMPANY
(801) 262-5761

BUILD ROAD SAFETY INTO YOUR NEXT PROJECT

Together, we can reach Zero Fatalities.

No matter what your next big project is in the state of Utah, we hope you'll focus on creating a safe work environment. That means making Zero Fatalities a goal for everyone involved on your project. Together, we can make a difference.

zero
Fatalities

A Goal We Can All Live With

Visit ZeroFatalities.com and help us reach the goal.



UPS REGIONAL HUB
SALT LAKE CITY, UTAH




Babcock Design

MORE THAN 20 ACRES UNDER ROOF
PROCESSING OVER 69,000 PACKAGES PER HOUR
REDEFINING SHIPPING IN THE INTERMOUNTAIN WEST

SLC 801.531.1144 | Boise 208.424.7675 | babcockdesign.com

CELEBRATING



YEARS

of collaboration with remarkable construction experiences
for ourselves, subcontractors, suppliers, our industry and
especially our customers.

HUMBLE FOR OUR PAST
BUILDING FOR FUTURE GENERATIONS

50 YEARS

WATTS

CONSTRUCTION
1968-2018

435.673.9096 • WATTSCONST.COM

UC&D

Index of Advertisers

ABC Utah	6-7
AE Urbia	34
Americom	87
Archer Mechanical	81
Architectural Nexus	59
Architecture Belgique	64
Ascent Construction	15
Babcock Design	98
Babcock Scott & Babcock	83
Beecher Walker	91
Bodell Construction	63
Bowen Studios	69
Big-D Construction	37
Cache Valley Electric	14
Cameron Construction	94
Century Equipment	96
CCI Mechanical	53
Child Enterprises	91
CRSA	79
CSDZ	73
Dunn Associates	9
Ferrellgas	47
FFKR Architects	51
Forterra	61
Geneva Rock	95
Hogan & Associates	99
Honnen Equipment	4
Holland & Hart	5
Hunt Electric	54
Intermountain Bobcat	Back Cover
Jacobsen Construction	85
Jones & DeMille Engineering	77
Jones & Waldo	89
Kilgore Companies	57
KK Mechanical	49
Layton Construction	27
method studio	67
MHTN Architects	49
Midwest Division Solutions	41
Millcreek Tile & Stone	45
Monsen Engineering	45
Mountain States Fence	33
Okland Construction	2
Parr Brown Gee & Loveless	93
Pentalon Construction	8
R & O Construction	74
Reaveley Engineers	64
Richards Brandt Miller Nelson	59
SBR/Vision Graphics	42
Staker Parson Materials & Construction	29
Steel Encounters	31
UC&D MOP Awards Sponsors	13
UDOT/Zero Fatalities	97
Van Boerum & Frank Associates	63
W.W. Clyde & Co	10
Watts Construction	98
Wheeler Machinery	3
Whitaker Construction	25
Zwick Construction	39



MORE THAN JUST
HARD HATS AND
TOOL BELTS.

From exhaustive pre-construction planning, ongoing cost-saving and problem solving, to continuing service after completion — we can do a lot more than put hammers to nails at Hogan & Associates Construction.

Learn more about what we do.
hoganconstruction.com





THANK YOU TO ALL OUR VALUED CUSTOMERS FOR 50 GREAT YEARS!
SCOTT MACHINERY & INTERMOUNTAIN BOBCAT

Authorized Bobcat Dealer

Intermountain Bobcat

2129 South Technology Pkwy
Salt Lake City, UT 84119

801-262-0208 | www.imbobcat.com

