

LOVE FIRST

June 2026
NEWSLETTER



Congrats to our graduates!
Lily, Briana, Emily, and Marcus (not pictured).



THE
SERVICEBERRY
Abundance and Reciprocity
in the Natural World
ROBIN WALL KIMMERER
AUTHOR OF BRAIDING SWEETGRASS

We just finished the worship series “All Flourishing is Mutual,” and many of you read the book and expressed interest in discussing and living into the concepts. Here’s your chance!

Labyrinth Worship this summer will have passages from the book to reflect on, along with scripture: Tuesdays: June 9, July 14, August 11th at 7pm

ECO Camp Discussion Group: August 17-19 is ECO Camp!

There will be activities for all ages, including a book discussion on The Serviceberry - so you have tons of time to read it if you haven’t already!

A Gift Economy: There has been an interest expressed in having some way for our church community to create Gift Economies – with stuff we don’t need, or veggies that we have too many of this summer, or perhaps even tools that need to be borrowed for one-time projects. If you are interested in helping make this happen, or if you have a raspberry bush that will have too many berries for you to eat come August – please reach out to Pastor Leah so we can put some things in place to share what we have and practice reciprocity!



Slow Summer

Starting in June, we'll be handing out a devotional by SALT Productions called Slow Summer. There'll be electronic ones sent out too if you'd rather access it on your phone or on a kindle. And just to be clear, it's not meant to be a shaming document! We all know how busy summer can be. As the parent of a high school graduate, we're already at the races for all things! And yet... and yet I know that if I don't take time to actually "smell the roses" (or the petunias in my yard), I will be severely disappointed. Time marches on, of course. Activities are planned, expectations from family and friends abound, and vacation calls. And, in the midst of all of that, I'm going to do my best to slow down; bike to work; sit outside and eat my lunch in the sun; walk the labyrinth; watch the birds; read poetry on my deck. What are the ways you can slow down? In a season where it is a delight to breathe deep (it doesn't hurt like in January!) let us take this time to enjoy this beautiful creation God has made, to deepen the relationships in our lives, and to give thanks.

Pastor Leah

lrosso@fumcscr.org



**Amanda Hodge and Janet Satern
will be joining Pastor Leah and Pastor Susie
at Minnesota Annual Conference 2026
on June 16, 17 and 18.**



SAVE THE DATE!

FOR LOVE FIRST'S

ECO CAMP

FOR EXPLORERS OF ALL AGES!

EVENINGS of Aug 17, 18 & 19



From your Justice and Mercy Team:



Rise and Repair Alliance is a political advocacy group focusing on issues that affect our environment and our indigenous people.

Their website contains links to various bills and legislative efforts that affect the environment and our indigenous people in MN. They have links for education and links to help people contact their local political leaders to voice opinions and ideas on these issues. Current projects include protecting native wild rice growing areas and limiting unregulated building of data centers.

Link to Rise and Repair Alliance website: <https://riseandrepair.org/>

Examples of topics on their platform:

Increased Protections for Wild Rice - Psij kin yanka (Dakota), Ganawendan Manoomin (Ojibwe): Protect natural stands of Wild Rice (Minnesota’s State Grain) known as Manoomin to the Anishinaabe and Psij to the Dakota.

A Hyper-scale Data Center Moratorium & Regulatory Framework: Implement a moratorium on the construction of new hyper-scale data centers until a regulatory framework is established to protect our communities.

Just Transition & Energy Democracy: Adapt our Grid Away from the “Central Station Era” Health Impact Assessments [SF 5109 | HF 4612] : Require Health studies anytime environmental impact studies are required. When the environment is contaminated, so are our bodies. This is especially true of subsistence communities.



SENIOR PRIDE
Bingo & Brunch

Thursday, June 4th
 9:30 to 11:30 AM

Whitney Senior Center
 1527 Northway Drive, St. Cloud MN 56303

EVENT IS FREE WITH REGISTRATION

9:30 to 10:30 AM
 Social Hour: Breakfast, Welcome, and Community Singing

10:30 to 11:30 AM
 BINGO & Closing

All Seniors & Allies Welcome! Open to the public!

In Partnership with:
 The Arc Minnesota, P F U N D FOUNDATION, CentraCare, Planned Parenthood, Whitney Senior Center, st.cloudpride



Coming in August:
United Women in Faith will begin collecting new and gently used coats of all sizes warm enough for a MN winter and in good condition! Mittens, hats and gloves are also needed.
Check your closets!

Coming up in worship...



Sunday Worship at 9:30am and
livestream at www.Lovefirstumc.org

June 7: "Asking for What We Need"

Sacrament of Holy Communion
Genesis 12: 1-9; Matthew 9: 18-26
Pastor Leah Rosso preaching

June 14: "Knitting Our Souls"

Psalms 139: 1-18, Mark 1: 9-14
Rev. Bill Meier preaching

June 21: "The Spirit of Subversion"

Honoring Juneteenth
Genesis 21: 8-21; Galatians 3:
Pastor Leah Rosso preaching

June 28: "Going to Seed"

Matthew 13: 1-9, 18-23
Pastor Leah Rosso preaching



JUNE COMMUNION OFFERING:



**MISSIONARY PARTNER
LORRAINE CHARINDA**



We're Hiring

Youth Nursery Attendants!

Looking for a meaningful part-time job? Love First UMC is seeking **two Youth Nursery Attendants** (ages 16+) to join our team starting in **August 2026!** If you love working with kids and want to help create a safe, fun, and welcoming environment for our youngest members, we want to hear from you.

- **Hours:** 2-6 hours per pay period (Sundays 8:30-11:30 AM and/or Wednesdays 5:30-7:30 PM during the academic year, plus occasional special services).
- **Ages Served:** Infants through age 5 on Sundays; up to 2nd grade on Wednesdays.
- **Qualifications:** Reliable, punctual, and a team player. Background check required. CPR/First Aid certification is preferred, but the church will cover the training costs if you need it!

Interested? Please reach out to **SPRC or Amanda, Director of Children's and Youth Ministries** for more information or to submit your application!

Thank you to the 3rd Saturday Meal crew -

Dianna Fink, Melinda Dumais, Vicky Clausen, Jessica Newman and Ezra, Kelly Stueven, Deb, Gail Kuzel, and Mary Smith who served 54 guests inside and 50 take out meals of cheesy chicken and rice, salad, fruit and cookies for the May 3rd Saturday Meal on May 16th. We appreciate you taking time out of your weekend to join us in the fun, and lots of dishes!

Linda Caird & Barb Rosene, coordinators

Questions? kitchen@fumcscr.org



Signup QR



Donation QR

On the 3rd Saturday each month FUMC serves a free meal to anyone who stops by. **FUMC serves next on June 20th.**

Other Community Meal locations & times:

- Place of Hope (511 9th Ave N) serves 7:30am, 12:30pm and 5:30pm each day.
- Salvation Army (400 Hwy 10 S) serves Monday-Friday from 11:30am-12:45pm
- Salem Lutheran (90 Riverside Dr SE) serves the 1st Saturday each month from 11:30am-1pm
- Newman Center (396 1st Ave S) serves the 2nd Saturday each month from 11:30am-12:45pm
- Bethlehem Lutheran (4310 CR 137) serves the 4th & 5th Saturday each month from 11:30am-12:45pm
- St. Augustine's (443 2nd St SE) serves the 3rd Sunday each month from noon-1pm.
- St. Mary's Cathedral (823 1st S S) serves the last Sunday each month 4:30-5:30pm





The energy on our recent Children and Youth Sunday was nothing short of infectious! Our littlest participants stole the show, leading the entire congregation in two vibrant songs. The whole sanctuary was dancing, moving, and singing along to their joyful praise. We carried that celebratory spirit right onto the patio

afterward, wrapping up a fantastic school year with **bubbles, ice cream, and the pure delight of all generations** worshipping together.

While we won't be hosting formal, weekly children's events over the next few months, please remember that **our kids are *always* a vital part of our community.** Children are warmly welcome to participate in every aspect of church life all summer long—worship is always richer when they are in the room.



Email Kathy (children@fumcscr.com) or Amanda (ahodge@fumcscr.org) to learn more about being a part of the 2026-27 Children's Council – A group of caring adults dedicated to guiding the direction and planning of children's ministry events that enrich the faith and formation of the next generation.



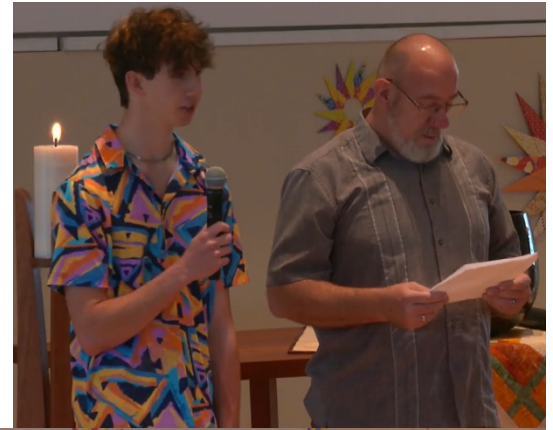
We wish your family a **restful, sun-drenched summer filled with wonder and play.** See you on the patio!

YOUTH GROUP

What a spectacular way to wrap up our programming year! This May, our young people absolutely shone during our **Children and Youth Sunday**, stepping into leadership with grace, authenticity, and joy. We officially closed out the season the best way we know how—with a high-energy **bowling party** filled with gutter balls, strikes/spares, and a lot of laughter. Thank you to every youth and volunteer who made this year so vibrant.

Now, as the school year ends, we are intentionally stepping into a **Slow Summer**. For our youth, this season is a beautiful, chaotic mix: traveling for camp, stepping into summer jobs, and playing hard. For our staff and leaders, it is a necessary season to recover, dream, and plan for the year ahead. We are collectively embracing a sort of sabbath—a time to soak in the sun, breathe a little deeper, and find joy and play wherever we can.

Please know that while our weekly schedule slows down, our relationships don't end. We will still have **intentional touch-points** throughout the summer months to stay connected. To keep things flexible, **all summer youth event details will be communicated directly to families via email**, so keep an eye on your inbox. May you all find rest, rhythm, and restoration in the months ahead!



LOVE FIRST

This summer Pastor Leah, Administrative Council Chair Lance Thielen, and Janet Satern will be recruiting people to lead parts of our strategic plan.

While the plan is always in process, the table below shows the outcomes we are working towards, along with some broad strategies we think will help get us there.

If you are interested in leading any of these things, or being on a team leading them, please reach out to Pastor Leah, Lance, or Janet! There's a lot more information, but this is a peak into the work that you will see happening, and we pray that you will be a part of, into the future!

Love First Strategy Map				
Objectives	Objective 1: We strengthen spiritual growth practices and our identity	Objective 2: We stand with our neighbors	Objective 3: We build sustainable systems for ministry	Objective 4: In kinship, we administer our shared spaces and resources
Strategies	Spiritual Growth- Develop spiritual growth pathways that equip us to center our Methodist identity and values, in our ministries and practices.	External Partnership- Work towards becoming better neighbors, through increased public offerings and partnership with local organizations.	Communication & Belonging- Make it easy for people to find their next step toward belonging, growing, and serving. Volunteer & Leadership Development- Create a Volunteer management team that will be a shared doorway for members who want to serve any ministries. Grow a healthy "bench" of leaders through discernment, mentoring, training.	Facilities/Land- Complete facilities/land condition assessment, and develop ideas/projects proposals that improve sustainability, safety, accessibility, care, and use of facilities/land. Finances- Create a long-term system of giving that includes telling the story of generosity as spiritual growth to inspire giving

The Well
will take a break from their Monday schedule and attend summer events like:

ST. CLOUD ROTARY'S
SUMMERTIME by GEORGE!

Contact Linda at thewell@fumcscr.org if you would like to join the group in summer fun!

Parent Child Retreat
EXPLORING IDENTITY
SUNDAY, AUG 2 FROM 4-7 PM
for
PARENTS & THEIR KIDS
AGES 12-19

- DINNER PROVIDED
- MIX OF LARGE GROUP, PARENT/KID ACTIVITIES, AND AGE GROUP ACTIVITIES
- PRIZE GIVEAWAYS

RSVP to fumc@fumcscr.org

Small Groups at Love First

Weekly & Monthly Groups

More details at

lovefirstumc.org/adult-ministry

Caregivers Support Group
1st & 3rd Wednesdays each month
at 7pm via Zoom

New participants must pre-register at:

caregivers@fumcscr.org

Prayer Shawls - will return in fall

1st & 3rd Wednesdays

each month at 5pm in church library

Contact Sandra scholarships@fumcscr.org

The Well

Summer events like

Summertime by George

Contact Linda at thewell@fumcscr.org

Conversations on Grief

2nd Sunday each month

after worship in Ed Wing

Contact Monica dinner@fumcscr.org

Bible 365

Fridays at 10am via Zoom

The Book of God, W. Wangerin Jr.
Contact Linda at lagre@fumcscr.org
for reading schedule and Zoom link.

UM Men's Group

2nd Tuesdays at 6pm in fellowship hall

Questions with Guy at: umm@fumcscr.org

Will meet next in August to begin
planning for Pancake Supper.

Play Date Meet Ups

2nd Saturdays at 10am

Fellowship Hall at Love First

Questions? Ask Caitlin playdate@fumcscr.org

Dinner Groups

Contact Monica to join: dinner@fumcscr.org



Fellowship Footsteps Walking Club

Next Walk - June 13th at 5pm

Watch the announcements or email for the next location.

Locations will vary every other Saturday.

Questions? Email Joshua at walking@fumcscr.org

Big Questions, No Answers

2nd Mondays at 10am in church library

Contact Pastor Susie at sputzke@fumcscr.org

Do you find yourself grappling with deep questions
about faith, theology, and the nature of God?

You're not alone. Join a monthly gathering of
seekers and thinkers as we explore where the

Spirit is present, especially in the questioning. This
month, we're asking: *What is abundance?*

Fellowship at Drakes

3rd Wednesday of the month at 11:30am

Meets at Drake's Restaurant, 520 1st St. NE, Sartell
Reservations required by noon the Tuesday prior by
contacting Kathy at rsvp@fumcscr.org

Young at Heart (YAH!) - will return in fall

2nd Fridays at 10am in fellowship hall

Questions? Ask Kathy at rsvp@fumcscr.org

This is a meeting for anyone who is young at heart,
usually 55 plus. We meet at 10 for morning
beverages and treats provided by members, a time
of humor with jokes or readings, participate in a
program with questions for the presenter and then
go to lunch at the restaurant of choice, if you so
desire.



June Communion Offering will be received by Global Ministry Partner, Lorraine Charinda

Lorraine is a missionary with the United Methodist General Board of Global Ministries serving as a YAI (Yambasu Agriculture Initiative) Regional Specialist in the Mid-Africa Regional Conference Area, based in Lubumbashi. She was commissioned in October 2017.

The Mid-Africa Regional Conference forms one of the largest episcopal areas in The United Methodist Church and it is one of the poorest. Most of the people depend on small-scale farming to earn a living and the church is committed to maximizing agricultural productivity. Farming serves as a tool for both evangelism and economic development. Projects include several farms that grow a wide range of crops, plus projects in beekeeping, fishing, and moringa tree cultivation.

Lorraine is from Zimbabwe, but has recently lived in Windhoek, Namibia, where she studied, worked, and was involved in Celebration Church- Zimbabwe. She holds a Bachelor of Science degree in agriculture and natural resources from Africa University in Zimbabwe, and a Master of Science degree in agricultural economics from the University of Namibia. In Windhoek, Lorraine worked in industry and education.



Communion Offering QR: Use the drop-down menu to select "Communion"

SOLAR PROJECT GIVING



APRIL FINANCIALS			
	Actual as of 4/30/26	2026 Budget	% of Budget
Revenue	\$193,827.94	\$718,859.00	26.96%
Expense	\$222,483.55	\$726,531.55	30.62%
Difference	(\$28,655.61)	(\$7,678.81)	

MAY COMMUNION OFFERING

Love Offering
will receive our gifts of \$795

The QR code is available if you would like to donate to the on-going budget or communion offering.



Leading Campaign Summary			
Pledges to Capital Campaign	\$432,329	Capital Goals:	
Leading Campaign Balance after finishing Goal #1	\$134,983	✓ #1 Mortgage Paid	\$267,369
Leading Pledges Received	\$368,182	#2 LED Sanctuary Lighting	\$187,834
Leading Non-Pledges Received	\$43,742	#3 LED Wall	\$57,781
Total Gifts to Leading:	\$411,924		\$512,984
		✦ Bids have been updated to show current pricing	

Love First UMC Parking Lot Median Berms - Prairie Installation Project Update

As part of the Land Stewardship Committee's work on our FUMC lands, the parking lot median berms have been getting some extra attention over the past few years, due in part to a Builders East Grant we received from the Minnesota Annual Conference UMC. Following previous years of a controlled burn of the plant and weed growth and the tilling of the soil, last fall the two center island areas were seeded with a mix of native grasses and prairie plants.

This summer looks like it is setting up to be a challenging for the prairie grass and plant growth in the median berms. It may be a relatively dry summer, and we have already observed a widespread and dense growth of Bull Thistle and Birdsfoot Trefoil, two weeds that are considered invasive species in the prairie environment we are creating. The Birdsfoot Trefoil while considered invasive, is still a pollinator plant for bees. We do however want to eradicate the Bull Thistle as completely as possible. As the Bull Thistle grows and begins to form its flower buds, there is a certain time when it is best to cut the Bull Thistle to kill it off.

The Land Stewardship Committee will be putting out a call for help from our Love First Community when the time comes in mid to late June to cut the Bull Thistle. We will be asking for volunteers to come to help us stop the Bull Thistle from overtaking our native plants and grasses in the median berms. We will be holding a Weeding and Ice Cream Social Party, so watch for the announcements in June.



Bull thistle surrounded by birdsfoot trefoil



Oasis reading group meets for tea!





What is the church called to do, say, and be in the face of authoritarian breakthrough? As United Methodists we are called to love boldly, serve joyfully, and lead courageously at all times, but especially now. On **June 15, 2026, from 10 a.m.-4:30 p.m., at the River's Edge Convention Center in St. Cloud**, laity and clergy are invited to attend the pre-conference Day of Justice coordinated by members of the Wisdom Council and Appointive Cabinet.

It can be intimidating to try to speak up in the current sociopolitical climate because there is so much division. We must not shy away from discomfort or disagreement in our practice of faith. As the preamble of the "The Social Principles of the United Methodist Church" states, "... the church needs to embrace conflicts with courage and perseverance as we seek together to discern God's will. With that understanding and commitment, we pledge ourselves to acknowledge and to embrace with courage, trust, and hope those controversies that arise among us, accepting them as evidence that God is not yet finished in sculpting us to be God's people."

The morning introduction will explore the 2024 Social Principles, while breakout sessions for laity and clergy will explore tools while practicing using storytelling to intentionally connect the Gospel and the work of justice.

After lunch, participants will choose from breakout sessions that delved deeper into parts of the Political Community section of the Social Principles:

- Civil Disobedience
- Disability Rights (Accessibility audit: language, theology, physical space)
- Migrants, Immigrants, and Refugees
- Voting Rights and Civic Engagement

Registration for this, along with the \$30 cost to help offset lunch and other expenses, is an option within the [annual conference registration form](#) at minnesotaumc.org

Pastors Susie Putzke and Leah Rosso will be attending, among others from our church. Come be part of a Day of Justice!



The Importance of Love and Support - Submitted by Mark Bordewick on behalf of the TRC team

While I am writing on behalf of the Trauma Responsive Church team, as I have returned to the team as a co-leader after a two-year hiatus, I have re-written this first article at least three times in my head. Each time with a totally different message. To be clear, I am excited to share what our church and our team are doing to grow being trauma responsive. However, I am going first to tell how receiving trauma responsive care has mattered in my life and recovery.

Four years ago, I was given a diagnosis of pulmonary fibrosis, a disease of progressive scarring of the lungs that destroys them in several years. The only option to extend life is to receive a lung transplant, trading a terminal disease “for one that can be managed.” Two years ago, I received my double lung transplant at Mayo hospital. (I would not be here to share this story without it.) While I had a variety of complications following surgery resulting in spending more than a half year in a hospital bed (over nine re-hospitalizations), my level of suffering has been extraordinarily limited. The reason for this was the outpouring of love, prayers, and support from family, friends, and this amazing church community and the trauma responsive care I received at Mayo.

No matter how blessed of life we have, everyone will experience significant trauma at some point. Our DNA has evolved, so we have a high probability of surviving physical and emotional and spiritual trauma. God has always been there loving us, as the eternal and ultimate foundation of trauma responsiveness, for example read Psalm 23. Still, surviving significant trauma usually comes at a hidden price - some compromise affecting our emotional, mental, physical and/or spiritual life “to recover” from the trauma and “overcome it. Research demonstrates that extensive trauma not only immediately impacts us psychologically and physically but also results in a risk for a variety of complications over our live span.

The impact of trauma and harm reduction is mitigated by experiencing love and support (trauma responsiveness) while going through it and afterwards. There is no escaping pain from trauma, but I fully believe it is the suffering that causes the most lasting harm from trauma, even though we typically stop feeling that suffering. Suffering is greatly reduced, as was mine, when surrounded by a loving trauma responsive community. The power of prayer and support from this church community was palpable to me. I know that it mattered to my survival and healing and minimal suffering. It brought God more into my life than my individual prayers could have by themselves. I am forever grateful and appreciative for you, my spiritual community, for being there with me on my journey, which is still ongoing.

Now to update what evolution is occurring in our trauma responsive church. As a congregation, we clearly are now more organic in how we are learning about and responding to the injury and suffering of others in our lives and community. FUMC is recognized in our conference as a leader and pioneer in trauma responsiveness, with other churches reaching out to us to help in their development. Still, we have maintained a TRC team as responding to the needs of others will always benefit from ongoing growth and development. Over the last five years many changes have happened to the TRC team as goals have been accomplished, and our congregation has engaged in the process of being more trauma responsive. We have shifted to a new model in which our team is developing and spearheading projects of a limited nature that need the skills and gifts of those in our congregation to help bring fruition. In the next month or two, these initiatives are going to be announced detailing the needs and commitment of time required to accomplish the goals. “With many hands, we can do so much more than what only a few can alone.” No one needs to join another monthly committee to participate, even though our team will tell you we have a special time together. After all, we make every effort to put into practice what we stand for! Please pray about participating in one or more of the subgroups that will work on these important goals to our mission.

Operation Crane-Control

To help keep local Sandhill Cranes from defacing our playground and patio—and to keep them from attacking their own reflections in the glass—we are using several different measures this spring to encourage them to take their daily strolls a bit further from the building.

First, we placed moving, anti-bird reflective tape on the windows and doors of the Fellowship Hall and along the backside of the Education Wing. The reflective nature and motion of the tape disrupt the cranes from seeing their reflections, stopping them from mistaking the glass for a rival bird. We have also put out reflective pinwheels around the playground and sidewalks, to coax them to stay away. But the most interesting Sandhill Crane deterrent we have attempted this year has been: a coyote.

We have officially employed the services of one fake, realistic-looking, life-size, and posable coyote. The coyote is a natural Sandhill Crane nemesis; from eggs in a nest up to adulthood, cranes are fighting off coyotes their entire lives. Complete with a furry tail that wags in the wind, our life-like friend has been moved all around the Memorial Gardens, Labyrinth, playground, and patio over the past few months with the help of our dedicated staff. The idea is simply to make the cranes wary of wandering too close to the church building.

So far, the addition of the coyote has been a huge success! The Sandhill Cranes have stayed away from the doors and haven't made a mess of our sidewalks and patio.

However, our decoy has worked so well that it actually attracted two real, live coyotes, which were witnessed by Pastors Susie and Leah while out for a walk on the trails. So, if you are outside behind the church and you think you see a coyote, you probably do! You should definitely only consider petting the fake one—which is still missing one vital thing: it needs a name!



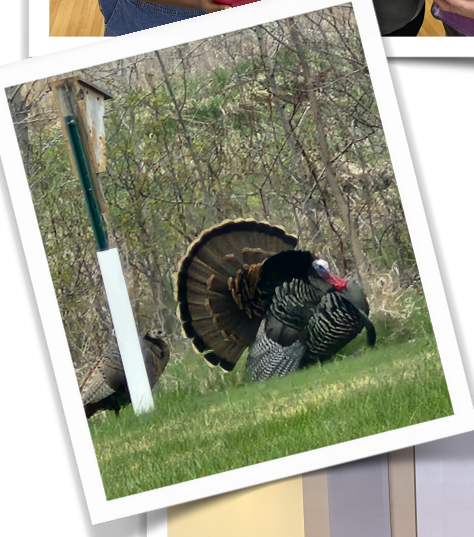
The Great Coyote Photo Challenge:

Your Mission, Should You Choose to Accept It: We are officially launching the **Coyote Picture Challenge!** We want you, your kids, your small groups, or your friends to sneak a photo with our silent protector. There are just a few ground rules for this top-secret operation:

- **Don't get caught!** Channel your inner secret agent. Snap your photo without being spotted by other people (or, of course, the cranes).
- **Keep him on his turf.** While our coyote *can* be moved around for the perfect shot, he must remain in the back open area of the church property so he can keep doing his job.
- **Show us your evidence.** Email your best, most creative photos to fumc@fumcscr.org so we can share the fun with the congregation.

We already have our very first official submission to get us started! Check out this incredible shot from Emily S., who managed to pull off the ultimate undercover mission: sneaking a photo with the coyote in her full prom dress!





May Memories:

Youth Group finished with bowling night, turkeys walk the prairie at FUMC, our 2026 confirmands with their mentors and Oasis reading group meet for tea.





First United Methodist Church
of the St. Cloud Region
1107 Pine Cone Road South
Sartell, MN 56377
lovefirstumc.org

NON-PROFIT
ORGANIZATION

U.S. POSTAGE
PAID

PERMIT NO. 337
ST. CLOUD, MN 56301

Address Service Requested



First United Methodist Church
of St. Cloud Region



@lovefirstumc.sartell



lovefirstumc.org

The church office is open Monday thru Friday: 8:30am - noon

Linda Agre,
Office Administrator
320.251.0804 ex. 102
lagre@fumcscr.org

Aaron Carpenter,
Music Ministry
320.251.0804 ex. 111
acarpenter@fumcscr.org

Ken Fruth,
Grounds & Maintenance
320.251.0804 ex. 110
custodian@fumcscr.org

Amanda Hodge,
Family & Youth Ministry
320.251.0804 ex. 107
ahodge@fumcscr.org

Todd Rosso,
Tech & IT Coordinator
trosso@fumcscr.org

Rev. Susie Putzke,
Connectional Pastor
320.251.0804 ex. 105
sputzke@fumcscr.org

Rev. Leah Rosso,
Lead Pastor
320.251.0804 ex. 104
lrosso@fumcscr.org

Korynn Ruch,
Financial Administrator
320.251.0804 ex. 103
kruch@fumcscr.org

Alan Srock,
Handbell Director
asrock@fumcscr.org