

DSK

ANGUS AND CHAROLAIS
30TH ANNUAL BULL SALE



55 ANGUS BULLS

Borah Station Yards
1^{pm} 21st July 2023



Take your time when you select your next bull. This is not just an expense to pay for this season but an investment into the future of your herd and therefore the future profitability of your business.



The sire you select today has a direct input on your beef production program for 10 years and beyond.

All sale bulls have been:

- ★ Veterinary inspected by Ced Wise BVSc, semen tested (including morphology) and palpated.
- ★ Fully vaccinated with 7in1, Vibrovax, Pestigard, 3 Day (BEF), Tick Fever and Longrange (Botulism). Backlined with Cydectin Platinum.
- ★ No foot trimming of any kind.
- ★ Never lot fed.
- ★ Raised to Graze.
- ★ Transport is free up to 300km of Borah Station, or for bulk buyers of 3 or more bull lots.



Grateful to have survived these years and thankful for the strong, efficient cows that are helping us rebuild.



Feeling sorry for ourselves now that it looks like we are heading back.



Joyful to have seen some green grass & wonderful seasons for a couple of years.

DSK

Angus & Charolais
30th Annual Bull Sale



Nutrien
Livestock™

AuctionsPlus

Selling Agents; Nutrien Livestock Gunnedah Ph: (02) 6742 3899

Scott Cooper: 0427 674 411 or Email: scott.cooper@nutrien.com.au

Auctioneer; Peter Godbolt, Nutrien Stud Stock Ph: 0457 591 929 or Email: peter.godbolt@nutrien.com.au

Purtle Plevy Agencies Pty Ltd Patrick Purtle; 0428851704 or Samuel Plevy; 0427856223

Email: samuel.plevy@purtleplevey.com.au Email: patrick.purtle@purtleplevey.com.au

AuctionsPlus Interfaced: Log on for live sale audio and see video footage of all lots.

Vendors: Chris Knox & Helen Alexander

Mobile Chris: 0427 600 278

Mobile Helen: 0438 600 278

E : dskangusandcharolais@westnet.com.au

or E: info@dskangusandcharolais.com.au

www.dskangusandcharolais@westnet.com.au

"Borah Station", 1220 Borah Creek Rd,
ROCKY GLEN via COONABARABRAN NSW 2357



What's a bull worth?

Cowman Formula

Increase in pounds per calf from a top-performance bull

X No. of cows bred to him per year

X No. of years to keep the bull

X Expected selling price of calves

= Additional dollars you can pay for a better bull

Example: A bull who will add 30 lbs. to the weaning weight of each of his calves mated to 25 cows per year for 4 years and you sell the calves for \$1.50 per pound.

$$30 \times 25 = 750 \times 4 = 3000 \times 1.50 = \$4,500$$

This bull is worth \$4,500 more than the average bull who will keep your weaning weights the same. Take this formula and put your own figures in and see what you can afford to pay. This equation does not consider the increase in value due to calving-ease, higher quality replacement heifers, yearling growth, feedlot gain and improved carcass quality.

Courtesy of facebook author unknown (thankyou social media)

This may have been written by a North American cattle breeder but it is still relevant to us in Australia.



**DSK J106 Reserve Champion Heavyweight Carcase
Sydney Royal 2015
2nd highest point score and Gold Medal
Sired by Kansas Upward G198 and
from the DSK Mittagong cow family**

At the recent Gundagai annual weaner and store sale, the top-price for true weaner steers of \$1440 was for 24 Angus steers, 373kg, from Sutton O'Brien Partnership, Gilmore. *This price represented a \$100 clear advantage to all the other age ranged Angus steers offered on the day.*

Congratulations:

to the Sutton O'Brien Partnership. These steers were sired by DSK Q102, a Texas Earnan L612 son out of DSK CBR Isobyx H94 who is maternal granddam to Lot 10 in this sale.

Congratulations:

Long time clients, David Kidd & family from Currabubula who recently sold steer and heifer calves straight off the cow with fantastic weights after a hard summer with steers ave 400kg & \$1450 and heifers ave 380kg.

Off grass. Off the cow.

Great to hear these fantastic results.

We are proud and pleased to present our 2023 draft of Angus industry focused sires.

The past twelve months has been a difficult time for the Australian beef industry. The markets took a huge nosedive on the back of world market constraints and domestic processing and marketing difficulties as well as the dry summer/autumn for most of the north of NSW and south QLD. The current drought predictor is not helping for market enthusiasm either. The current market place strongly backs our long term breeding objectives of larger framed cattle with high performance, while keeping the fertility in females and with progeny getting to required weights & fat specifications, quicker, and therefore more profitably and without surrendering meat quality. Efficiency of feed intake to finished muscle & conditioning is a must for us.

For the producer who keeps track of \$\$ per head return averages, they would see that this is showing that the small premium for high marbling, slower growing cattle, does not cut it against the extra weight in high performing, well muscled calves for return of \$\$ per head to the producer.

A good friend said to us "WEIGHT OVER RATE", and how true is that one phrase.

Our program lets us grow or finish our animals to suit our current grazing situation or indeed the current market or feed input pricing's at any given time. If that is straight off the cow or grown out to a heavier yearling weight, we know that our cattle can suit that program at any stage.

We pride ourselves on the longevity of our bulls. Sensible preparation is a must and this year's bulls were weaned onto an oats crop and as the summer rainfall was one of the lowest seen by us here at Borah, there was no summer pasture or oats for them to grown and finish their preparation on. We started the bulls on home grown oats silage in early January and then opened our corn silage pit in late March. The bulls have been trough fed daily, with a balanced mix of 20% cereal straw, 20% barley grain & 5% protein supplements (minerals etc) and 55% corn silage.

The quality of the line up this year has impressed us and everyone that has visited the bulls so far. We have a line up of strong, powerful bulls that are sound and ready to work. The comment on the semen testing was (all excellent with top quality semen samples across the draft). The bulls are quiet and easy to handle in their groups with good temperament being a must for us in our golden years as we are still working on our own and do a lot with the cattle on foot.

No bulls have been foot trimmed in any way or have had any special treatment. The performers in the draft have got there on their own genetic merit.

We have been consistent in our breeding program since the studs inception in 1988 and we could not be more proud of the herd of cows that we have after enduring so many harsh drought years. The cows that remained were the absolute cream and the daughters that have since come into the breeding herd are showing that excellence.

Consistency of type is no easy measure to maintain. Especially when we are outliers to many in the Angus world with the genetics and type that we aim to breed. We have travelled and we have looked and we have found what we are looking for and not afraid to go back and use bulls from the past to bring a particular strength back in to play.

Our bulls are strong, and square but so are the cows they came from. Our calving problems are negligible. They mostly stem from unseen disease or malpresentation. Our breeding cows are built right though and that is our objective. Be basic and build the right base. Sometimes getting back to basics is what we all need.

We welcome you to inspect the bulls either on sale day or prior at our Open Day on the 5th of July or by appointment. Give us a call and we can show you around.

We wish you well in your endeavours and safe travels. Here's to another great year.

Sincerely, Chris and Helen



Are your cattle Efficient?! with Byergo Angus, Savannah, Missouri, USA

At Byergo Angus we don't just talk the talk we back it up with hard facts. Efficiency is the single most important trait to your profitability.

Byergo Angus was established in 1950 with the purchase of one cow (Elia of South Oaks) and her two daughters. Today the Byergo Angus network spans over 1,000 cows with approximately 85% of those females descending back to the world-famous Elia's. Efficiency is where we lay our hat and the Elia cow family has proven to be just that.

What is efficiency. There are 3 main areas to look at while improving efficiency in your herd. Cow Herd Efficiency, Backgrounding savings, and Feedlot savings.



COWHERD EFFICIENCY. This is primary target for most producers. Byergo Angus has experienced using less hay during the winter and increased stocking rates during the summer.

"On the same acres that we used to run 800 cows 20 years ago we now run 1000 cows."
Drew Byergo.

By using feed efficiency tested sires Byergo Angus has saved up to 10% in cowherd feed costs in one generation and up to 20% feed cost savings in 3 generations.

"Often times the rancher gets confused with efficiency and fleshing ability. The key is to combine both together, get an easy fleshing cow that eats less, it is possible and we are doing just that at Byergo Angus. We have to break down the miss assumptions that just since a cow is fleshy she is efficient. This is not efficiency, she might be eating twice as much, this is really costing the industry and destroying profit margins. We must measure it!" Bryson Byergo

BACKGROUNDING CALVES.

"It is common practice to wean calves 45-60 days to receive an increased premium when selling your calves. "There can be big savings in cattle that convert feed into pounds in these 60 days. It is very possible to see \$1 a day savings in Sire A versus Sire B's calves. This is \$60 savings per calf. On a sire that sires 30 calves, this is \$1,800 savings in a sire in 1 year." Marc Byergo.



FEEDLOT SAVINGS.

Talk to any feedlot and you will quickly find out that one of the most important traits to profit is COST OF GAIN.

"If you can put weight on for .90 cents per pound and sell them for a \$1.40 you are making money. Now think if you could drive that cost of gain down to .70 cents per pound? .20 cents per pound when putting on 500 pounds is \$100 per head. This is very possible on the average when buying feed efficient bulls. When individually testing animals, we see some of them eat twice as much as their counterparts." Drew Byergo

Improve your bottom line! Cheers

Byergo Angus



(Bryson & Drew Byergo & families pictured)

DSK Angus are excited to announce the purchase earlier this year of Byergo Mach One 02K2.

A yearling son of Ankonian One (Who is the sire of Cupcake 8900) X Cupcake 7400. Cupcake 7400 made herself known as the dam of Byergo Maverick 8400, but she didn't stop there, where at 15 years old she has proven to be one of the most efficient cows of the entire breed.

In May 2022 I, (Helen) was fortunate enough to visit Byergo Angus and viewed a portion of the cow herd and saw this great dam in person along with her son, Maverick. I also attended the 2022 May production sale (they hold 3 sales per year) and toured the efficiency testing centre.

To say that this operation is ahead of the game is an understatement. It is impressive and realistic. Not afraid to be different or to use tried and tested older genetics, the team at Byergo have the bottom line of their clients in the forefront aiming to keep their genetics aligned to commercial reality.

The Byergo breeding program and direction is one that we can understand and agree with so we are more than excited to be adding these genetics to our own, proven program here at DSK.

Performance with efficiency is all profit!

THROW BACK DOMINANCE	
87	Byergo Mach One 02K2
Bred Date: 0-14-2020	
Ankonian One	#Rito 3W3 of 0J2 Rito 9FB3 Ankony Flora W6820
*Byergo Miss Cupcake 7400	#Woodlawn Charge On 14 +Byergo Miss Cupcake 3600



BYERGO ONE 02K2 - LOT 87

Mach One is currently in centre for testing and collection and we are excited to await the first batch of semen for us to bring in to Australia.

The Roche Group and DSK.

21 years and counting.

Richard and Katherine Braham, have been at the helm of the rural division of the Roche Group for more than 25 years.

They are in control of the growth and improvement of an amalgamation of rural holdings on the eastern side of Armidale. The total area is 19,500 Ha of improved country with a carrying capacity of 9,000 breeders. Most of the progeny is finished on the farm-based, accredited feedlot on Jeogla Station. The adjoining country to Jeogla and Wallamumbi Stations are the breeding properties that provide the progeny to be grown out on pastures and finished in the feedlot

on Jeogla. These properties include Fairburn, Achill West, Waimoa North, Highdowns, and Maralinga.

The feedlot, situated on Jeogla Station, is the finishing hub of the enterprise and has taken over from the historic V1V & V2V on property production sales that the Wright family began in the early 1980's. The Roche Group continued these production sales until the latter part of the last decade, selling young cattle into many grower and feedlot operations over the eastern states.



Richard & Katherine
(Photo courtesy of
Katherine Braham)



DSK bred steers offered at the Jeogla
V1V & V2V production sale in 2016



The next step forward was the construction of the on property feedlot where all Roche Group young cattle were then finished.

All young cattle are brought to Jeogla after weaning for grouping into similar average weight groups of up to 340 head per group (separated by sex), which then rotate around improved pastures under center pivot's. The rotation then continues to feedlot entry at approx 350kg liveweight and begin a starter ration for 10 days at around 12 months and then moving on to finishing ration for 60 to 80 days. The feedlot rations are mixed on site.

The company contract to Woolworths and currently supply 210 head every 2 weeks. The aim is to average a liveweight of 590kg. They are returning an average MSA grade score of 63 and an MSA compliance of 99.7%. All young cattle are finished and processed before they are 18 months of age.

The breeding program is majority spring calving but a large autumn calving group is run also and helps create the continuity of animals entering the feedlot. Roughly 1000 heifers are calved down each year with a similar amount of CFA females leaving each year. The mature cow herd ranges in ages up to 12 years of age which is a great testament to the breeding and management of the cow herd to last that long in a rigorous and demanding program.

The cow herd consists of an ongoing cross breeding program of Angus and Shorthorn with the majority being Angus. The Angus bulls are joined to Shorthorn cross cows and Shorthorn bulls over black cows, to keep the consistency of type that has been bred by

Richard since moving on from the original Beefmaker herd.

2001 was the first purchase of DSK Angus bulls that began the long and productive history between the Roche Group and DSK. Since that time, a number, well in excess of 150 DSK bulls have entered the working mature cow herd with the Roche Group being the bulk buyer of DSK bulls every year since 2001.

As a bull breeder we can have nothing but immense pride that our bulls have proven themselves in such a target driven workplace and from the number of bulls and the number of years that the cooperation between us has existed. I am certain that not all bulls have been a success, but it must be worth noting that not one credit or problem has arisen from bull breakdowns in all these years.

This is the culmination of our breeding aims and direction of over 35 years in action, working on such a large scale and with such success. The management structure of Richard and Katherine and their staff, have a huge part in the success of the Roche Group rural division and obviously make it work, but we hold a bright light of pride knowing that so much of our DSK genetics are running through the majority of animals grazing on the high country East of Armidale and heading to your supermarket chillers each week.

We thank Richard and Katherine for such a long and successful collaboration with us and look forward to many more years ahead.

Photo courtesy of Katherine Braham - Jeogla feedlot



Looking After Your New Bull & How Hard Should He Work?

An important understanding of bull management and looking after your genetic investment!

Your DSK bull is fully checked, vaccinated and ready to go to work for you. But do you know just how much work he should be able to handle?

It is always important to maintain good nutrition with all bulls even after maturity is reached. At purchase, he will have come from a mob that is well fed with a complete nutritional balance & even on good grass, a working & growing bull may require more nutrition than may be available. Your bulls will continue to develop to maturity & as such require a diet to suit. Normally good pasture is more than adequate but at times pastures may be lacking in key minerals & vitamins.

Maintaining his dietary needs is important for keeping his strength, fertility & growth at adequate levels. If you let your bull crash too far he is in danger of serious & long lasting damage to his internal organs and semen production.

Caring for your new bull after purchase should be viewed as caring for your future genetic & financial investment. How you care for your bull in his first season can affect the long term contribution that your new genetic package will make to your herd.

The sperm cycle of a bull is 60 days so if your bull has received a major stress (injury, illness or nutrition), before or during joining, this will affect his ability to settle his joining females in the allocated time frame.

Take your bull home & settle him in for a few days with a few quiet pregnant cows or steers. It is a good idea to introduce ***all of your sires into a new paddock when introducing new bulls to the group***. If you put him into a group of older bulls, he will be at the very bottom of the pecking order & be in danger of serious injury before you have even used him. Make sure that this paddock is large enough that bulls can retire to their own corners when they feel like they have had enough fighting. It is worth noting that a bull fight is enough of a stress trigger to affect short term semen quality.

It is very important to make sure that your new bull in his first season is not overworked & underfed. This will not only affect his ability to serve cows & produce live semen, but it will have a major impact on his growth pattern to maturity which can cost you big bucks when you go to trade that bull in at the end of his working life & sell him by the kilo.

At DSK we recommend single sire mating as a means of reducing injury to your bulls & also a great way of sire identifying your calves.

It is important that you keep mobs in an area that a bull can cover, ie, he can see, smell or hear what is happening in his paddock so he doesn't miss cycling cows in small groups.

Keeping an eye on your bulls when mating helps to pick up injury or other problems quickly so they can be rectified. Make sure that your females are healthy & in a condition good enough to be able to fall pregnant while lactating. Check your bull regularly for any lameness or swelling around the sheath or testicles & it is a good idea to try & catch your bull mating a cow to check for penis damage or abnormal serving problems.

The Australian Association of Cattle Veterinarians defines a normal, fertile, mature aged bull, (a mature bull is 3yrs and over), as "expected to get 90% of 50 normal, cycling, disease free females pregnant within 9 weeks, and 60% of these should become pregnant in the first three weeks of joining."

For yearling or immature bulls, mating loads of 25 - 30 females with a frame score that the bull can easily mount are recommended & in a smaller paddock with good feed & water. Give them 6 - 8 weeks & pull them out into a good nutrition paddock, or hand feed them if necessary, to allow them to recover body condition & maintain strong growth.

The condition of younger bulls is critical for their sperm production (both short & long term), & it is recommended that they not be allowed to drop in condition during service.

We recommend that you have a backup bull in case of injury. You may even find that lessening your joining mobs in a few cases allows you to have that extra bull out working each season but doesn't overwork them so that you can use one or more of these as a backup bull if you find you need to.

Injury & illness can strike a bull at any time & while most times this can be managed quickly & with complete recovery it is important that whatever is holding your bull back from maximum workload be dealt with straight away. Not only can it be the difference between recovery & total loss but it is also a factor in how quickly your bull gets his mob in calf & that affects your bottom line.

Sale Information

- Sale Location:** Borah Station Yards. Property Address is 1220 Borah Creek Rd, Rocky Glen NSW 2357
- Directions:** 32km West of Mullaley or 34km NE of Coonabarabran on the Oxley Hwy to Rocky Glen.
North onto Borah Creek Road for 12km to the front ramp. (rough road & mind the ramps)
Continue through Borah front ramp a further 1km to see sale yards on the hill above the hayshed on right.
- Sale start:** 1pm, Fri. 21st Jul. Please bring this catalogue with you to the sale to be sure of having one.
- Refreshments:** Light refreshments & lunch will be provided by the vendor.
- Video Auction & AuctionsPlus:** Video auction in conjunction with **AuctionsPlus**. Live lots will be on site for physical inspection. Supplementary information will be available.
- Inspections:** All bulls will be penned at the Borah Yards by 10am sale day. Private inspections are welcomed & can be arranged prior to sale day at Borah Station, by calling either the vendors or the sale agents.
- Supplementary Sheets:** Current weights, scans & scrotal measures will be available on sale day along with any catalogue alterations or withdrawals & DNA results & morphology results. Be sure to get one when you arrive or look for the supplementary information if you are using AuctionsPlus.
- Health:** Borah Station is Beef Only J Bas 6. All bulls have been veterinary inspected by Dr. Ced M Wise – BVSc, MSc, Dip ACT, MACVSc, semen tested (including morphology) & palpated. In late June, bulls have been fully vaccinated with 7in1, Vibrovax, Pestigard, 3 Day (BEF), Tick Fever & Longrange (Botulism). Backlined with Cydectin Platinum. A health dec will be available on request.
- Transfers:** All NLIS transfers are the responsibility of the purchaser. All STUD transfers please make your request via email to us with your Angus Society membership details & lots purchased.
- Transport:** As in previous years the vendor's & their agents will endeavour to assist with your transport needs. DSK will try to deliver your bulls where possible. Transport is free up to 300km of Borah Station, or for bulk buyers of 3 or more bull lots.
- Please make clear instructions with the agents when settling as to contact details for delivery.**
- Insurance:** Purchaser to arrange insurance cover when required. A representative will be available on sale day to take care of your livestock insurance needs or the selling agents can arrange this for you.
- Rebate:** A 2% rebate will be payable to outside agents on condition that they either attend the sale & introduce themselves to the selling agents, or who nominate potential purchasers in writing prior to 5pm on Thu 20th July with the selling agents. Agent rebate is conditional upon full settlement of account within 7 days of sale & will be strictly adhered to.

DSK Guarantee: All DSK bulls offered for sale on the day have been through a thorough testing regime for soundness and fertility. All bulls have been deemed structurally fit and physically healthy and ready for work to the best of our knowledge. If a bull is proven to be infertile or structurally breaks down due to reasons other than injury, misadventure or insufficient nutritional needs, at any stage over the 12 months following purchase, DSK will; provide you with a satisfactory replacement if available, or issue you with a credit of the purchase price less a suitable salvage value of the bull in question. This credit is available to be used at the following 2 DSK bull sales and deemed forfeited if not used in that time. All claims are to be accompanied by a full Veterinary certificate from a registered professional Veterinarian. All associated veterinary and other costs are the responsibility of the purchaser. We deem our bulls to be in the best condition we can possibly have them at the time of sale. It is the purchaser's responsibility to ensure the health and welfare of the bull after sale to keep them in suitable condition to be able to join appropriate numbers of females. Please read the article on how to care for your genetic investment on the previous page.

Disclaimer: While every care is taken to ensure the safety of all persons & property the vendors & their agents are not liable for any damage or injury caused or contributed to by us or by any other person whether caused or contributed to or by negligence, deliberate act or unlawful conduct. This applies to the owners, agents & their employees of the business activities of HD Alexander & CR Knox. Persons enter the sale pens at their own risk. Absolutely no children to enter the pens. For your safety only able bodied persons allowed into the pens. Bulls are unpredictable large animals & all care must be taken when handling or viewing any livestock at close proximity. Information supplied in this catalogue is correct at the time of compilation & the vendor & or agents take no responsibility for unintentional mistakes or interpretations of information supplied.

1

DSK WP SPECIALIST S58 SV**HBR****Group: 1****Herd Ident: NKS21S58** Genetic Conditions: AMFU,CAFU,DDFU,NHFU**DOB: 15/08/2021 Age (Mths): 23**

BALDRIDGE XPAND X743 #

YOUNG DALE KNOCKOUT 134U #

BALDRIDGE COLONEL C251 #

YOUNG DALE XCALIBER 32X PV

BALDRIDGE ISABEL Y69 #

BROOKMORE TIBBIE 222T #

Sire: WOODHILL PATENT PV**Dam: DSK YXC FLOWER P111 #**

EF COMPLEMENT 8088 PV

DSK TCF C84PV

WOODHILL EVERGREEN Y10-C62 #

DSK C84 FLOWER F113 #

WOODHILL EVERGREEN W269-Y10 #

DSK V6 FLOWER Y30#

TACE

TransTasman Angus Cattle Evaluation

July 2023**TransTasman Angus
Cattle Evaluation**

	CED	CEM	GL	BW	200	400	600	MCW	MILK	SS	DC	CWT	EMA	RIB	RUMP	RBY	IMF	NFI-F
EBV	0.1	5.9	-2.7	4.7	54	99	122	105	13	1.7	-4	65	2.5	-3.3	-4.9	0.9	0.8	-0.31
Acc	54%	42%	77%	70%	71%	69%	72%	65%	59%	72%	30%	60%	58%	59%	58%	52%	62%	45%

Traits Observed: GL,CE,200WT,400WT,600WT,SC,Scan(EMA,Rib,Rump,IMF),Genomics

A good style of bull to start the sale.

S58 is a moderate frame, big volume, bull with commercial focus. We are continuing to use W.Patent in our heifer joining's with some standouts in the weaners. Strong maternal side of this lot with Grand dam, F113 being the dam of DSK N71 who was our EKKA Interbreed Champion bull in 2019 and she has some standout ET calves coming through for next year along with some great AI progeny of her son, N71.

Heifer joining suitable sire.

Purchaser:.....

Price \$:.....

**Lot 1**

2

DSK GI SATISFY S111 SV**HBR****Group: 1****Herd Ident: NKS21S111** Genetic Conditions: AMFU,CAFU,DDFU,NHFU**DOB: 15/09/2021 Age (Mths): 22**

G A R PROGRESS SV

YOUNG DALE KNOCKOUT 134U #

G A R MOMENTUM PV

YOUNG DALE XCALIBER 32X PV

G A R BIG EYE 1770 SV

BROOKMORE TIBBIE 222T #

Sire: G A R INERTIA PV**Dam: DSK YXC MITTAGONG M83 #**

G A R PROPHET SV

S CHISUM 6175PV

G A R PROPHET 2984 #

DSK CHSM MITTAGONG J16 SV

G A R DAYBREAK 1521 #

DSK RR MITTAGONG G19#

TACE

TransTasman Angus Cattle Evaluation

July 2023**TransTasman Angus
Cattle Evaluation**

	CED	CEM	GL	BW	200	400	600	MCW	MILK	SS	DC	CWT	EMA	RIB	RUMP	RBY	IMF	NFI-F
EBV	2.1	7	-7.7	3	56	90	122	92	15	0	-1.5	73	6.5	-2.1	-2.8	0.6	1	0.41
Acc	60%	50%	83%	72%	73%	72%	74%	70%	65%	75%	38%	63%	63%	64%	64%	59%	66%	51%

Traits Observed: GL,CE,200WT,400WT,600WT,SC,Scan(EMA,Rib,Rump,IMF),Genomics

**Lot 2**

S111 is an allrounder type of bull to suit a wide range of markets.

Dam M83 is from our strong Mittagong family and was the dam of DSK R67 who sold for \$30,000 at last year's bull sale.

Granddam, J16, was dam of our other \$30k top price last year.

Heifer joining suitable sire.

Purchaser:.....

Price \$:.....

3

DSK MQB SUMMED UP S35 SV

HBR

Group: 1

Herd Ident: NKS21S35 Genetic Conditions: AMFU,CAFU,DDFU,NHFU

DOB: 23/07/2021 Age (Mths): 24

G A R MOMENTUM PV
LAWSONS MOMENTOUS M518 PV
LAWSONS AFRICA H229 PV

Sire: MURDEDUKE QUARTERBACK Q011 PV

CARABAR DOCKLANDS D62 PV
MURDEDUKE BARUNAH N026 PV
MURDEDUKE K304 SV

Dam: DSK SPP ISOBYX Q24 #

TEHAMA REVERE #
S POWERPOINT WS 5503 PV
S QUEEN ESSA 248 #
DSK RR KONG K7SV
DSK K7 ISOBYX M103 #
DSK CBR E76 ISOBYX H94#

TACE

TransTasman Angus Cattle Evaluation

July 2023

TransTasman Angus
Cattle Evaluation

	CED	CEM	GL	BW	200	400	600	MCW	MILK	SS	DC	CWT	EMA	RIB	RUMP	RBY	IMF	NFI-F
EBV	1.7	2.3	-5.6	4.5	55	101	139	127	16	3.7	-4	77	9.6	0.3	-0.3	0.2	2.6	0.61
Acc	57%	44%	83%	70%	72%	70%	71%	66%	58%	72%	35%	59%	60%	61%	61%	55%	63%	49%

Traits Observed: GL,CE,200WT,400WT,600WT,SC,Scan(EMA,Rib,Rump,IMF),Genomics

A heifer's first calf born unassisted.

Good style of sire and the only one sired by the popular Quarterback sire. S35 takes your eye in the paddock with his smooth make up and skin and hair type. Strong maternal side with Powerpoint and Rachis going back to the great matron H94 who is also in the pedigree of the impressive Lot 10 in this sale. H94 is now a working matron for Donna and Ian and the boys in their JSRL Angus stud and one of her sons, DSK TEL Quantified Q102, commercial calves topped the annual 2023 Gundagai store sale by a whopping \$100 a head above other true weaners.

Heifer joining suitable sire.

Purchaser:.....

Price \$:.....



Lot 3

4

DSK TEL SAMBUCCA S63 SV

HBR

Group: 1

Herd Ident: NKS21S63 Genetic Conditions: AMFU,CAFU,DDFU,NHFU

DOB: 18/08/2021 Age (Mths): 23

CONNEALY CONSENSUS #
CONNEALY EARNAN 076E PV
BRAZILA OF CONANGA 3991 839A #

Sire: TEXAS EARNAN L612 PV

TE MANIA BERKLEY B1 PV
TEXAS UNDINE H638 PV
TEXAS UNDINE Z183 PV

Dam: DSK RR TENTURA P25 #

REMITALL NIGHTHAWK 37N #
REMITALL H RACHIS 21R #
HENDERSON MISSIE 32'02 #
DEER VALLEY ALL INSV
DSK DVAI TENTURA L128 #
DSK LG TENTURA J44#

TACE

TransTasman Angus Cattle Evaluation

July 2023

TransTasman Angus
Cattle Evaluation

	CED	CEM	GL	BW	200	400	600	MCW	MILK	SS	DC	CWT	EMA	RIB	RUMP	RBY	IMF	NFI-F
EBV	-10.7	0.8	-0.7	7.1	71	121	164	148	13	1.7	-3.9	98	10.3	-1.9	-3.5	1.1	2	-0.08
Acc	56%	47%	83%	70%	71%	70%	73%	67%	62%	73%	37%	60%	60%	61%	61%	55%	63%	50%

Traits Observed: GL,CE,200WT,400WT,600WT,SC,Scan(EMA,Rib,Rump,IMF),Genomics



Lot 4

S63 has impressed and stood out from the crowd all the way through from a calf with his extra capacity and mass. Great skin and hair type as we expect from "Big Tex" progeny.

S63 was the equal 2nd highest IMF% raw data score in early March 2023 at 6.3%. With such a huge actual EMA and even fat's, S63 is a real quality meat machine.

Dam, P25, joined our donor pen this year with another standout weaner bull for sale next year. P25 is a moderate, well made female with plenty of milk. If you're looking for extra weight at an early age in your calves while maintaining strong, maternal traits, S63 is the sire to do that.

Purchaser:.....

Price \$:.....

CONNEALY EARNAN 076PV
Sire: TEXAS EARNAN L612PV
TEXAS UNDINE H638PV

DBRL 03M TITAN 4T#
Dam: DSK TTN LADY HEATHER K40#
COLDSTREAM LADY HEATHER 92S#

Simply amazing is how you could describe the Pep P48 draft of sons in this year's sale. Pep is an absolute powerhouse of a sire. Long as a train and so wide he could barely fit up a race when he went last year after a joining injury. This is the 2nd year of sons we have offered and we have another group in the weaning pen and the overall theme is "BIG, STRONG, WIDE, MUSCLE ON AMAZING BONE". A true performance sire in the real life sense and all of them you could say are replica's of their dad.

His first daughters have calved and even though they are having an extremely tough season, they are showing good maternal traits and all calved down unassisted. We selected Pep to use for his correct structure, strong muscle and great skin and hair type and most importantly, from an excellent full Canadian outcross dam. His dam, K40, has a strong spine, deep side and tremendous length and neck extension with an excellent udder and a very feminine outlook. Our Canadian cows are just tremendous.



July 2023

TransTasman Angus
Cattle Evaluation

	CED	CEM	GL	BW	200	400	600	MCW	MILK	SS	DC	CWT	EMA	RIB	RUMP	RBV	IMF	NFI-F
EBV	-26	-10.0	-0.2	+8.5	+64	+117	+143	+144	+6	+3.3	-3.8	+90	+6.8	-3.8	-4.8	+1.7	+0.8	+0.10
Acc	64%	50%	72%	83%	86%	87%	87%	79%	65%	87%	42%	69%	71%	73%	72%	67%	72%	53%

Traits Observed: Genomics

Statistics: Number of Herds: 1, Prog Analysed: 67, Genomic Prog: 18

Right: DSK TTN Lady Heather K40
A fully Canadian bred imported embryo.
Dam of our Sire; DSK TEL PEP P48
Unfortunately we don't have a photo of Pep P48
but you can see how great his dam is!!



K40

Herd Ident: DXTL612

Born: 30/08/2015

Genetic Conditions: AMFU,CAFU,DDFU,NHFU

HBR

TEXAS EARNAN L612

(BIG TEX)

DSK STUD SIRE

PURCHASED FOR \$56,000 in 2017

We searched for a long time for a complete sire to use over our outcross Canadian genetics. We found him, researched him (viewed his dam, and grand dam) and his pedigree information, then backed ourselves and paid the top price of \$56K. Next we gave him time to prove our diligence.

When you invest in a sire the job is not proven until you see daughters in production and sons breeding well. L612 has done all that and more. This sale shows "Big Tex" has influence with direct sons - paternal grandsons with the use of DSK TEL Pep P48 - and many maternal grandsons with his daughters now in full production.

He puts correct structure, muscle, high performance and a beautiful slick coat with fine skin and hair.

In 2020 he sired a marble score 8 steer at just under 12 months of age and 100 day feed. We have sold yearling daughter's to \$27,000 and sons to \$30,000.

TACE may show a large BW but we have joined him to many heifers over the years with no problems. With his structure and the structural width of our females, his calves are born with ease and his daughters are calving just as easily.



July 2023

TransTasman Angus
Cattle Evaluation

	CED	CEM	GL	BW	200	400	600	MCW	MILK	SS	DC	CWT	EMA	RIB	RUMP	RBV	IMF	NFI-F
EBV	-25.5	-9	-5.7	+8.7	+71	+127	+164	+159	+6	+1.5	-4.6	+98	+7.0	-1.7	-4.2	+0.7	+1.8	-0.10
Acc	79%	68%	95%	92%	92%	92%	92%	87%	85%	92%	57%	82%	80%	81%	81%	77%	80%	65%

Traits Observed: GL,BWT,200WT,400WT,600WT,SC,Scan(EMA,Rib,Rump,IMF),Genomics

Statistics: Number of Herds: 7, Prog Analysed: 160, Genomic Prog: 66



REX

DSK TEL Rex R5 was equal top priced bull (\$30,000) at our 2022 bull sale with strong bidding competition seeing him going to Hewitt Cattle Australia genetics manager, Warren Miller.



DSK PEP Rambo R67. Equal top price (2022) of \$30,000 sold to Yaccamundah Investment QLD
Maternal brother to Lot 2 in this sale. Son of DSK TEL Pep P48 (a Big Tex son).

5

DSK TEL STANDUP S114 SV

HBR

Group: 1

Herd Ident: NKS21S114 Genetic Conditions: AMFU,CAFU,DDFU,NHFU

DOB: 17/09/2021 Age (Mths): 22

CONNEALY CONSENSUS #

REMITALL NIGHTHAWK 37N #

CONNEALY EARNAN 076E PV

REMITALL H RACHIS 21R #

BRAZILA OF CONANGA 3991 839A #

HENDERSON MISSIE 32'02 #

Sire: TEXAS EARNAN L612 PV

Dam: DSK RR BLACKBIRD L61 #

TE MANIA BERKLEY B1 PV

DBRL 03M TITAN 4T#

TEXAS UNDINE H638 PV

COLDSTREAM BLACKBIRD 73Y #

TEXAS UNDINE Z183 PV

COLDSTREAM BLACKBIRD 53G#

TACE

TransTasman Angus Cattle Evaluation

July 2023

TransTasman Angus
Cattle Evaluation

	CED	CEM	GL	BW	200	400	600	MCW	MILK	SS	DC	CWT	EMA	RIB	RUMP	RBY	IMF	NFI-F
EBV	-10.6	-3.6	-4.3	6.3	51	100	130	132	10	2.3	-2.8	72	8	-3.5	-5.4	1.9	0.6	0.03
Acc	56%	47%	82%	71%	72%	71%	73%	67%	63%	74%	37%	61%	60%	61%	61%	56%	63%	49%

Traits Observed: GL,CE,200WT,400WT,600WT,SC,Scan(EMA,Rib,Rump,IMF),Genomics

Like the previous lot, S114 is a "Big Tex" and Rachis cross that has produced a top sire prospect. S114 is a long bodied, wide topped, stylish sire with a great skin. Dam L61 is a valued full Canadian female who produces the goods every year. S114 is a full pedigree sibling to standout herd sire JSRL Quick Fix Q29 at the kid's stud (Donna and Ian, Jack and Sam Robson) JSRL at Adelong.



Lot 5

Purchaser:.....

Price \$:.....

6

DSK TEL STATESMAN S121 SV

HBR

Group: 1

Herd Ident: NKS21S121 Genetic Conditions: AMFU,CAFU,DDFU,NHFU

DOB: 21/09/2021 Age (Mths): 22

CONNEALY CONSENSUS #

SITZ UPWARD 307R SV

CONNEALY EARNAN 076E PV

KANSAS UPWARD G198 SV

BRAZILA OF CONANGA 3991 839A #

KANSAS ANNIE Y656 SV

Sire: TEXAS EARNAN L612 PV

Dam: DSK KG DUTCHESS M94 #

TE MANIA BERKLEY B1 PV

REMITALL H RACHIS 21R#

TEXAS UNDINE H638 PV

DSK RR DUTCHESS K2 #

TEXAS UNDINE Z183 PV

MONTEREY DUTCHESS U3#

TACE

TransTasman Angus Cattle Evaluation

July 2023

TransTasman Angus
Cattle Evaluation

	CED	CEM	GL	BW	200	400	600	MCW	MILK	SS	DC	CWT	EMA	RIB	RUMP	RBY	IMF	NFI-F
EBV	-24.1	-8.9	-3	9.5	72	121	154	155	10	2.6	-4.5	92	6.4	-4.1	-6.8	1.4	1.3	-0.39
Acc	56%	46%	82%	70%	71%	70%	73%	66%	62%	74%	37%	60%	59%	61%	61%	55%	63%	49%

Traits Observed: GL,CE,200WT,400WT,600WT,SC,Scan(EMA,Rib,Rump,IMF),Genomics



Lot 6

Another big volume "Big Tex" son displaying characteristics we expect in his progeny. Muscle, strength, skin and hair type to mention a few. The maternal pedigree of S121 being a cross of Upward and Rachis with top producing old matron, U3 in there as well, should make S121 a good and consistent breeder with strong maternal traits.

Purchaser:.....

Price \$:.....

7

DSK PEP STELLAR S108 SV**HBR****Group: 1****Herd Ident: NKS21S108** Genetic Conditions: AMFU,CAFU,DDFU,NHFU**DOB: 11/09/2021 Age (Mths): 22**

CONNEALY EARNAN 076E PV

BRAVEHEART OF STERN SV

TEXAS EARNAN L612 PV

ATAHUA FREEDOM 609-10 #

TEXAS UNDINE H638 PV

ATAHUA ALICE 285-05 #

Sire: DSK TEL PEP P48 SV**Dam: DSK AF BENHILDA P29 #**

DBRL 03M TITAN 4T #

COBBADAH CREEK Y19 P.FRED D149SV

DSK TTN LADY HEATHER K40 #

DSK CCD BENHILDA G111 #

COLDSTREAM LADY HEATHER 92S #

DSK B.NEB BENHILDA D40#

TACE

TransTasman Angus Cattle Evaluation

July 2023

TransTasman Angus
Cattle Evaluation

	CED	CEM	GL	BW	200	400	600	MCW	MILK	SS	DC	CWT	EMA	RIB	RUMP	RBV	IMF	NFI-F
EBV	-16.8	-6.5	-5	10.4	62	106	145	145	5	1.3	-1.6	89	8.1	-4	-5.7	2.1	-0.1	-0.18
Acc	52%	40%	67%	67%	69%	69%	72%	64%	56%	72%	32%	57%	55%	57%	57%	51%	59%	45%

Traits Observed: CE,200WT,400WT,600WT,SC,Scan(EMA,Rib,Rump,IMF),Genomics

S108 is a stylish, well made sire who say's "look at me" in the paddock due to his overall balance and correctness. His sire, Pep P48 put loads of length, width, muscle and strength into all his progeny along with great slick skins and soft hides. Granddam, G111 was a large frame cow with tremendous volume and capacity, with great length, depth of side and spring of rib. Maternal grandsire, Freedom, had limited use in Australia with sons selling to \$85,000 into stud use.

**Lot 7**

Purchaser:.....

Price \$:.....

8

DSK PEP STEWIE S107 SV**HBR****Group: 1****Herd Ident: NKS21S107** Genetic Conditions: AMFU,CAF,DDFU,NHFU**DOB: 11/09/2021 Age (Mths): 22**

CONNEALY EARNAN 076E PV

SITZ UPWARD 307R SV

TEXAS EARNAN L612 PV

DSK SUP KRACKER K21 SV

TEXAS UNDINE H638 PV

DSK HU PANDA W9 #

Sire: DSK TEL PEP P48 SV**Dam: DSK K21 PANDA N128 #**

DBRL 03M TITAN 4T #

COBBADAH CREEK Y19 P.FRED D149SV

DSK TTN LADY HEATHER K40 #

DSK CCD PANDA G109 #

COLDSTREAM LADY HEATHER 92S #

DSK X1 PANDA C160#

TACE

TransTasman Angus Cattle Evaluation

July 2023

TransTasman Angus
Cattle Evaluation

	CED	CEM	GL	BW	200	400	600	MCW	MILK	SS	DC	CWT	EMA	RIB	RUMP	RBV	IMF	NFI-F
EBV	-7.4	0.5	-2.1	6.1	49	91	106	108	9	3.1	-3	63	3.6	-4.8	-5.7	1.6	0.3	-0.28
Acc	50%	39%	65%	66%	69%	68%	71%	63%	55%	72%	30%	56%	54%	56%	56%	50%	58%	43%

Traits Observed: CE,200WT,400WT,600WT,SC,Scan(EMA,Rib,Rump,IMF),Genomics

**Lot 8**

S107 is a sire that will add performance and frame to his progeny. A young sire with extra capacity, depth and bone. Maternal side a double cross of our valued Panda line.

Purchaser:.....

Price \$:.....

Reference

Sire

YOUNG DALE XCALIBER 32X PV

Herd Ident: CAN1564938

Born: 08/02/2010

Genetic Conditions: AMF,CAF,DDF,NHF,DWF,MAF,MHF,OHF,OSF,RGF

HBR

LAGRAND MAF ANTIDOTE 5775#

S A V DENSITY 4336SV

Sire: YOUNG DALE KNOCKOUT 134U#

Dam: BROOKMORE TIBBIE 222T#

YOUNG DALE ERICA 26N#

BROOKMORE TIBBIE 35N#

We chose to use this sire after visiting Young Dale in person and viewing Xcaliber and his dam, we thought he was the perfect bull to compliment and cover the Remitall H Rachis daughters and that cross has proven to be one of the best moves we have made. Xcaliber is power personified. His real performance though has been in the consistency of top draft progeny in each and every year and with that continuance onto the progeny of his sons and daughters. You can see how well his genetics have proven themselves in the lineup catalogued in this sale. Most of the top end of the sale are either sired by him or his son, M63, or the many daughters that we have in production here at DSK. His calves are born so easy that we would consider him a heifer bull and have used him over first calvers with no worries in the past. The trick with them is that they GROW!! Huge muscularity and so much length.

His daughters milk well too - no matter what TACE says.

TACE

TransTasman Angus Cattle Evaluation

July 2023

TransTasman Angus
Cattle Evaluation

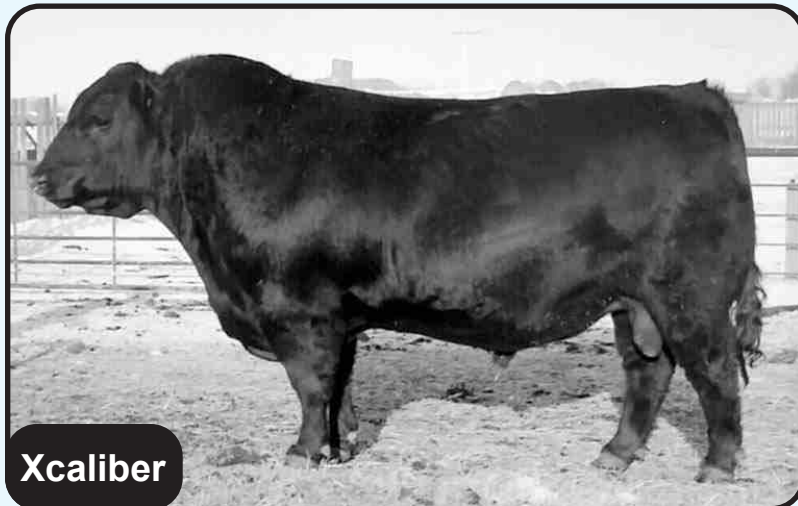
	CED	CEM	GL	BW	200	400	600	MCW	MILK	SS	DC	CWT	EMA	RIB	RUMP	RBV	IMF	NFI-F
EBV	-2.7	+0.0	-5.3	+6.9	+61	+111	+137	+145	+3	+2	-2.8	+80	+7	-4.8	-7.7	+2.1	-0.6	-0.16
Acc	76%	63%	72%	95%	94%	93%	94%	89%	91%	91%	48%	86%	85%	85%	83%	79%	84%	59%

Traits Observed: Genomics

Statistics: Number of Herds: 20, Prog Analysed: 269, Genomic Prog: 38



DSK YXC Lady Heather R78
daughter of L67 (Rachis X 92S) & Xcaliber



Xcaliber

Reference

Sire

WOODHILL PATENT PV

Herd Ident: USA19199070

Born: 02/02/2018

Genetic Conditions: AMF,CAF,DDF,NHF,DWF,MAF,MHF,OHF,OSF,RGF

HBR

BALDRIDGE XPAND X743 #

EF COMPLEMENT 8088 PV

Sire: BALDRIDGE COLONEL C251 #

Dam: WOODHILL EVERGREEN Y10-C62 #

BALDRIDGE ISABEL Y69 #

WOODHILL EVERGREEN W269-Y10 #

Woodhill Patent has proven to be an exceptional sire for the use that we wanted him for. A heifer joining sire. all his calves are born small and fast. The beauty of Patent is that unlike a lot of other heifer suitable sires, he is adding thickness of carcase and keeping our nice wide structure. He does moderate in frame but his depth and length are compensating to keep his progeny in the average weight range of each calf drop as they mature. He has a great slick skin and lovely soft hides on his calves and they have scanned pretty consistently well for fats and IMF%. Good structural soundness in all of his progeny and his daughters milking ability looks as though they are coming along nicely as the first of them nears calving.

We will continue to use Patent as a go to heifer sire in the future.

TACE

TransTasman Angus Cattle Evaluation

July 2023

TransTasman Angus
Cattle Evaluation

	CED	CEM	GL	BW	200	400	600	MCW	MILK	SS	DC	CWT	EMA	RIB	RUMP	RBV	IMF	NFI-F
EBV	+9.6	+10.4	-7.5	+2.4	+65	+122	+155	+128	+19	+2.7	-4.9	+82	+4.4	-1.8	-2.5	+0.2	+1.6	-0.29
Acc	65%	48%	94%	94%	89%	86%	84%	80%	75%	81%	40%	79%	75%	72%	68%	65%	77%	53%

Traits Observed: Genomics

Statistics: Number of Herds: 19, Genomic Prog: 60, Prog Analysed: 144



DSK WP Dandaloo S129
sired by Patent & out of an Xcaliber daughter



Patent

9

DSK WP STERLO S92 SV**HBR****Group: 1****Herd Ident: NKS21S92** Genetic Conditions: AMFU,CAFU,DDFU,NHFU**DOB: 31/08/2021 Age (Mths): 23**

BALDRIDGE XPAND X743 #

REMITALL NIGHTHAWK 37N #

BALDRIDGE COLONEL C251 #

REMITALL H RACHIS 21R #

BALDRIDGE ISABEL Y69 #

HENDERSON MISSIE 32'02 #

Sire: WOODHILL PATENT PV**Dam: DSK RR LADY HEATHER L49 #**

EF COMPLEMENT 8088 PV

COLDSTREAM PARADOX 73N#

WOODHILL EVERGREEN Y10-C62 #

COLDSTREAM LADY HEATHER 92S #

WOODHILL EVERGREEN W269-Y10 #

COLDSTREAM HEATHER WHYTE 42K#

TACE

TransTasman Angus Cattle Evaluation

July 2023

TransTasman Angus

Cattle Evaluation

	CED	CEM	GL	BW	200	400	600	MCW	MILK	SS	DC	CWT	EMA	RIB	RUMP	RBV	IMF	NFI-F
EBV	3.2	5.9	-4.3	5	66	119	161	149	18	2.1	-3.2	96	2.8	-4.2	-5.4	0.5	1.5	-0.27
Acc	54%	42%	83%	72%	72%	69%	69%	67%	62%	73%	32%	61%	60%	60%	59%	54%	64%	47%

Traits Observed: GL,CE,200WT,400WT,SC,Scan(EMA,Rib,Rump,IMF),Genomics

A sire that will impress for his length and combination of thickness. A very good bull by the Patent bull who we will continue to use. Dam is a full Canadian import who has bred well for us and adds frame.

**Lot 9**

Purchaser:.....

Price \$:.....

10

DSK YXC SPLIT S90 SV**HBR****Group: 1****Herd Ident: NKS21S90** Genetic Conditions: AMFU,CAFU,DDFU,NHFU**DOB: 30/08/2021 Age (Mths): 23**

LAGRAND MAF ANTIDOTE 5775 #

REMITALL H RACHIS 21R #

YOUNG DALE KNOCKOUT 134U #

DSK RR KONG K7 SV

YOUNG DALE ERICA 26N #

MONTEREY SERENE V19 #

Sire: YOUNG DALE XCALIBER 32X PV**Dam: DSK K7 ISOBYX M103 #**

S A V 004 DENSITY 4336 SV

CARABAR 1407 B49 E76PV

BROOKMORE TIBBIE 222T #

DSK CBR E76 ISOBYX H94 #

BROOKMORE TIBBIE 35N #

DSK PNP ISOBYX D153#

TACE

TransTasman Angus Cattle Evaluation

July 2023

TransTasman Angus

Cattle Evaluation

	CED	CEM	GL	BW	200	400	600	MCW	MILK	SS	DC	CWT	EMA	RIB	RUMP	RBV	IMF	NFI-F
EBV	-0.2	2.9	-5.1	6.5	56	100	139	139	15	1	-2.4	81	13.2	-4.4	-7.1	2.4	-0.1	-0.1
Acc	53%	41%	70%	69%	71%	69%	69%	66%	61%	65%	32%	60%	59%	61%	61%	55%	62%	45%

Traits Observed: 200WT,400WT,600WT,SC,Scan(EMA,Rib,Rump,IMF),Genomics

**Lot 10**

Here he is. The power bull in the catalogue with a powerful maternal pedigree backing him as well. S90 displays outstanding presence with extra frame and thickness with a very correct and square stance and structure. An outstanding maternal pedigree with the great old cow H94 (see comments on Lot 3) backed by V19, both of these old matrons are outstanding breeders. A top class sire, not to be missed.

Purchaser:.....

Price \$:.....

Reference

DSK YXC MANHATTAN M63 PV

Herd Ident: NKSM63

Born: 06/07/2016

Sire

Genetic Conditions: AMFU,CAFU,DDFU,NHFU
 YOUNG DALE KNOCKOUT 134U #
 Sire: YOUNG DALE XCALIBER 32X PV
 BROOKMORE TIBBIE 222T #

HBR
 GILMANDYKE DARBY D0107 SV
 Dam: DSK GDK FLOWER G124 SV
 DSK A21 FLOWER C18 #

M63 was Reserve Senior Champion at Sydney in 2018 and sold as our top priced lot in our sale later that year. Manhattan M63 with limited AI use is proving to be an influential member of our sire battery. We base our program on using sons of outstanding females and his dam, G124 (Pods) was a standout. 4 sons in the sale including the lead yearling, T31 (Lot 27). An outstanding weaned spring heifer is in the show team for EKKA in August along with an ET daughter and son of Pods, such is the strength and consistency of that old cow.



July 2023

Trans Tasman Angus
Cattle Evaluation

	CED	CEM	GL	BW	200	400	600	MCW	MILK	SS	DC	CWT	EMA	RIB	RUMP	RBY	IMF	NFI-F
EBV	-5.4	-8.7	-4.4	+8.4	+68	+119	+165	+159	+12	+2.9	-0.2	+99	+6.2	-4.6	-6.3	+1.5	-0.9	-0.28
Acc	58%	45%	82%	76%	77%	77%	77%	73%	63%	77%	37%	67%	65%	67%	66%	61%	67%	49%

Traits Observed: BWT,600WT,SC,Scan(EMA,Rib,Rump,IMF)

Statistics: Number of Herds: 2, Genomic Prog: 1, Prog Analysed: 11



DSK GDK Flower G124 (PODS)
dam of Manhattan M63



Manhattan M63

Reference

GLENMORGAN ENHANCE MAN Q367 SV

Herd Ident: ABWQ367

Born: 18/08/2019

Sire

Genetic Conditions: AMFU,CAFU,DDFU,NHFU
 SYDGEN EXCEED 3223PV
 Sire: SYDGEN ENHANCE SV
 SYDGEN RITA 2618#

HBR
 AYRVALE BARTEL E7 PV
 Dam: GLENMORGAN BARTEL LADY L111#
 GLENMORGAN BERKLEY LADY J147#

Enhance Man Q367 was selected at the Glenmorgan 2020 bull sale as a spring yearling at just 13 months. We were looking for a heifer joining sire with Enhance breeding. Used for 2 seasons with only 1 assist in 22 calves born. A long upstanding sire, clean made, good head and correctly made with very clean skin and hide.



July 2023

Trans Tasman Angus
Cattle Evaluation

	CED	CEM	GL	BW	200	400	600	MCW	MILK	SS	DC	CWT	EMA	RIB	RUMP	RBY	IMF	NFI-F
EBV	+2.7	+3.9	-1.6	+4.1	+54	+97	+132	+115	+17	+4.2	-5.5	+63	+2.8	-0.9	+0.1	-0.2	+3.0	-0.29
Acc	66%	57%	83%	77%	81%	81%	83%	78%	75%	78%	45%	72%	69%	71%	71%	66%	71%	57%

Traits Observed: GL,BWT,200WT,Genomics

Statistics: Number of Herds: 1, Prog Analysed: 15



DSK PEP Martina R77
Great depth & softness with scale.
a Pep daughter that calved last March
now owned by Diamond Angus



Enhance Man Q367

11

DSK M63 SHOW OFF S62 SV**HBR****Group: 1****Herd Ident: NKS21S62** Genetic Conditions: AMFU,CAFU,DDFU,NHFU**DOB: 18/08/2021 Age (Mths): 23**

YOUNG DALE KNOCKOUT 134U #

SITZ UPWARD 307R SV

YOUNG DALE XCALIBER 32X PV

DSK SUP KRACKER K21 SV

BROOKMORE TIBBIE 222T #

DSK HU PANDA W9 #

Sire: DSK YXC MANHATTAN M63 PV**Dam: DSK K21 POWER N114 #**

GILMANDYKE DARBY D0107 SV

GILMANDYKE DARBY D0107SV

DSK GDK FLOWER G124 SV

DSK GDK POWER G56 #

DSK A21 FLOWER C18 #

DSK B.NEB POWER D50#

**July 2023****TransTasman Angus
Cattle Evaluation**

	CED	CEM	GL	BW	200	400	600	MCW	MILK	SS	DC	CWT	EMA	RIB	RUMP	RBV	IMF	NFI-F
EBV	-9.2	-10.5	0.1	10.3	71	127	169	166	11	1.3	0.5	106	4.4	-5.6	-6.6	1.5	-0.4	-0.82
Acc	50%	39%	82%	67%	69%	66%	67%	64%	56%	72%	31%	56%	55%	57%	57%	51%	60%	45%

Traits Observed: GL,CE,200WT,400WT,SC,Scan(EMA,Rib,Rump,IMF),Genomics

S62 is another impressive sire that has extra power, muscle and frame. These bulls have the ability to really add kilos to their progeny with their length and width. A maternal pedigree packed with female breeders with Upward and Darby. These larger framed bulls that combine extra performance with fertility and good maternal traits will increase profitability in your program.

**Lot 11**

Purchaser:.....

Price \$:.....

12

DSK PEP STONER S28 SV**HBR****Group: 1****Herd Ident: NKS21S28** Genetic Conditions: AMFU,CAF,DDFU,NHFU**DOB: 10/06/2021 Age (Mths): 25**

CONNEALY EARNAN 076E PV

CARENDA STOCKMAN D34 SV

TEXAS EARNAN L612 PV

MONTEREY LUCKY L150 #

TEXAS UNDINE H638 PV

MONTEREY SERENE D128 #

Sire: DSK TEL PEP P48 SV**Dam: DSK L150 WILCOOLA P145 #**

DBRL 03M TITAN 4T #

COBBADAH CREEK Y19 P.FRED D149SV

DSK TTN LADY HEATHER K40 #

DSK CCD WILCOOLA G73 #

COLDSTREAM LADY HEATHER 92S #

DSK HR WILCOOLA D42#

**July 2023****TransTasman Angus
Cattle Evaluation**

	CED	CEM	GL	BW	200	400	600	MCW	MILK	SS	DC	CWT	EMA	RIB	RUMP	RBV	IMF	NFI-F
EBV	-30.1	-5.9	0.1	9.6	61	111	144	167	12	2.2	-2	92	3.8	-6	-7.3	1.7	0.8	-0.29
Acc	49%	38%	64%	66%	69%	67%	71%	64%	54%	70%	29%	56%	55%	57%	57%	50%	59%	43%

Traits Observed: 200WT,400WT,600WT,SC,Scan(EMA,Rib,Rump,IMF),Genomics

**Lot 12**

If you're looking to put extra scale and performance into your program this could be him. Oldest bull in the draft and probably the heaviest. Maternal pedigree goes back to Hi Road who was a great cow maker for us in his day.

Purchaser:.....

Price \$:.....

What a great breeding bull this Canadian sire has turned out to be. In 2009, after seeing him live in Canada with fantastic progeny out of similar type cows to ours, we decided to import the semen in this sire and he has consistently proven himself at the highest levels for 13 yrs now. His females have been held in high regard in any herd they grace as outstanding breeders and matrons. No semen remaining in this standout sire who has really left a legacy of top producing females. We continue to see his daughters leaving us top draft progeny year in year out as you can see for yourself in this lot of sale bulls. So many of our females are either Rachis daughters or maternal granddaughters. His legacy is huge and we cannot think more highly of this grand old sire for his contribution to our herd.



TACE
TransTasman Angus Cattle Evaluation

Mid July 2023

TransTasman Angus
Cattle Evaluation

	CED	CEM	GL	BW	200	400	600	MCW	MILK	SS	DC	CWT	EMA	RIB	RUMP	RBY	IMF	NFI-F
EBV	-8.2	-5.8	-0.2	+6.6	+57	+106	+132	+129	+20	+2.1	-3.7	+85	+0.2	-1.6	-1.9	+0.7	-0.4	-0.02
Acc	82%	70%	95%	95%	93%	93%	93%	90%	92%	93%	56%	89%	87%	87%	86%	83%	87%	69%

Traits Observed: Genomics

Statistics: Number of Herds: 16, Genomic Prog: 38, Prog Analysed: 208



**DSK Formula One F6 Sired by Rachis and
Grand Champion Canberra Royal 2012**



DSK RR Lady Heather R49
sired by Rachis & out of a full ET sister to K40
(DSK TTN Lady Heather K40 see page 14)

DSK RR POLLY K27
a Rachis daughter showing off the
maternal traits Rachis is best known for



DSK RR Lady Heather L67
One of our first fully Canadian bred and
imported embryo's!
Also one of our favourite females.
Sired by Rachis out of Lady Heather 92S



13

DSK YXC STRONG MAN S38 PV**HBR****Group: 1****Herd Ident: NKS21S38** Genetic Conditions: AMFU,CAFU,DDFU,NHFU**DOB: 30/07/2021 Age (Mths): 24**LAGRAND MAF ANTIDOTE 5775 #
YOUNG DALE KNOCKOUT 134U #
YOUNG DALE ERICA 26N #**Sire: YOUNG DALE XCALIBER 32X PV**S A V 004 DENSITY 4336 SV
BROOKMORE TIBBIE 222T #
BROOKMORE TIBBIE 35N #**Dam: YOUNG DALE POLLYANNA 22P #**YOUNG DALE MONARCH 35G #
YOUNG DALE CASINO 67M #
DOUBLE J BLACKBIRD 53H #
YOUNG DALE REAL DEAL 18K#
YOUNG DALE POLLYANNA 18M #
DOUBLE J POLLYANNA 253G#**TACE**
TransTasman Angus Cattle Evaluation

July 2023

TransTasman Angus
Cattle Evaluation

	CED	CEM	GL	BW	200	400	600	MCW	MILK	SS	DC	CWT	EMA	RIB	RUMP	RBY	IMF	NFI-F
EBV	-4.6	-1.1	-1.3	6.6	53	95	121	123	10	1.4	-2.3	71	4.3	-4.3	-5.1	1.7	-0.7	-0.27
Acc	50%	39%	64%	67%	70%	71%	72%	66%	63%	71%	30%	63%	59%	59%	57%	53%	60%	41%

Traits Observed: 200WT,400WT,600WT,SC,Scan(EMA,Rib,Rump,IMF)

Full Canadian blood bull here and haven't these Xcaliber bulls been breeding well. Dam, 22P is an excellent type of deep bodied and highly maternal Angus female. S38 is a soft, easy doing type with good depth and capacity

**Lot 13**

Purchaser:.....

Price \$:.....

14

DSK RACHIS SENSATION S43 PV**HBR****Group: 1****Herd Ident: NKS21S43** Genetic Conditions: AMFU,CAFU,DDFU,NHFU**DOB: 3/08/2021 Age (Mths): 23**VERMILION DATELINE 7078 #
REMITALL NIGHTHAWK 37N #
DIAMOND D EVERA 073G #**Sire: REMITALL H RACHIS 21R #**O G L BATTLE CRY 427 128 #
HENDERSON MISSIE 32'02 #
HENDERSON MISIE 2'97 #**Dam: DSK GDK POLLY G33 SV**TE MANIA MODEST Z793 SV
GILMANDYKE DARBY D0107 SV
NARRANGULLEN EMILLESQUE A294 SV
MERRIDALE PACK-N-POWER A46PV
DSK PNP POLLY E153 #
DSK FB POLLY U22#**TACE**
TransTasman Angus Cattle Evaluation

July 2023

TransTasman Angus
Cattle Evaluation

	CED	CEM	GL	BW	200	400	600	MCW	MILK	SS	DC	CWT	EMA	RIB	RUMP	RBY	IMF	NFI-F
EBV	-8.3	-5.4	0.3	6.3	52	96	126	122	18	2.8	-3.3	74	-2.5	-0.7	-0.5	-0.2	1.6	0.25
Acc	58%	48%	72%	72%	73%	71%	72%	69%	66%	72%	38%	64%	63%	64%	64%	59%	66%	51%

Traits Observed: 200WT,400WT,600WT,SC,Scan(EMA,Rib,Rump,IMF),Genomics

**Lot 14**

The only Rachis son in the sale this year and when you go through the catalogue, you can see the impact Rachis has had in our program. Maternal strength in his donor dam, G33 (sired by Darby). A moderate framed, well muscled young sire with excellent softness and balance with great skin and hair. A maternal brother to Lot 25.

Purchaser:.....

Price \$:.....

15

DSK P106 SANDSTONE S99 SV**HBR****Group: 1****Herd Ident: NKS21S99** Genetic Conditions: AMFU,CAFU,DDFU,NHFU**DOB: 4/09/2021 Age (Mths): 22**

CONNEALY ONWARD #

SITZ UPWARD 307R SV

SITZ UPWARD 307R SV

DSK SUP KRACKER K21 SV

SITZ HENRIETTA PRIDE 81M #

DSK HU PANDA W9 #

Sire: DSK PINE DRIVE P106 SV**Dam: DSK K21 HI BALL N100 #**

GILMANDYKE DARBY D0107 SV

V D A R NEW TREND 315#

DSK GDK POLLY G33 SV

DSK 315 HI BALL K5 #

DSK PNP POLLY E153 #

MONTEREY HI-BALL A2#

**July 2023**TransTasman Angus
Cattle Evaluation

	CED	CEM	GL	BW	200	400	600	MCW	MILK	SS	DC	CWT	EMA	RIB	RUMP	RBY	IMF	NFI-F
EBV	-0.9	0	-1.8	4	40	75	89	58	18	3.1	-4.5	53	10.1	0.5	0.1	1	0.7	0.45
Acc	52%	43%	68%	67%	70%	68%	71%	65%	58%	72%	36%	58%	56%	59%	59%	52%	61%	48%

Traits Observed: CE,200WT,400WT,600WT,SC,Scan(EMA,Rib,Rump,IMF),Genomics

A stylish, strong spined and long bodied bull.
Sired by our heifer calving specialist in P106. S99
will breed well above his figures being pulled back
due to old 315 in his pedigree.

Heifer joining suitable sire.**Lot 15**

Purchaser:.....

Price \$:.....

16

DSK GEM SANDMAN S48 SV**HBR****Group: 1****Herd Ident: NKS21S48** Genetic Conditions: AMFU,CAFU,DDFU,NHFU**DOB: 7/08/2021 Age (Mths): 23**

SYDGEN EXCEED 3223 PV

YOUNG DALE KNOCKOUT 134U #

SYDGEN ENHANCE SV

YOUNG DALE XCALIBER 32X PV

SYDGEN RITA 2618 PV

BROOKMORE TIBBIE 222T #

Sire: GLENMORGAN ENHANCE MAN Q367 SV**Dam: DSK YXC POLLY Q87 #**

AYRVALE BARTEL E7 PV

REMITALL H RACHIS 21R#

GLENMORGAN BARTEL LADY L111 #

DSK RR POLLY M39 #

GLENMORGAN BERKLEY LADY J147 #

DSK GDK POLLY G15SV

**July 2023**TransTasman Angus
Cattle Evaluation

	CED	CEM	GL	BW	200	400	600	MCW	MILK	SS	DC	CWT	EMA	RIB	RUMP	RBY	IMF	NFI-F
EBV	2.2	2.2	-2.9	4.2	49	85	113	108	15	2.1	-3.2	54	5	-1.8	-2.6	1.2	-0.1	-0.36
Acc	53%	43%	68%	67%	69%	67%	70%	65%	57%	70%	32%	57%	56%	58%	58%	52%	61%	46%

Traits Observed: CE,200WT,400WT,600WT,SC,Scan(EMA,Rib,Rump,IMF),Genomics

**Lot 16****A heifer's first calf born unassisted.**

A lot to like about this very complete young sire.
Son of Enhance Man who was used on heifers for 2
yrs with no calves assisted. A heifers first calf from
a very well bred young female with Xcaliber and
Rachis close in her pedigree.

Heifer joining suitable sire.

Purchaser:.....

Price \$:.....

17

DSK JBOYS JB SOLO S104 SV**HBR****Group:****Herd Ident: NKS21S104** Genetic Conditions: AMFU, CAFU, DDFU, NHFU**DOB: 6/09/2021 Age (Mths):**

CONNEALY CONSENSUS 7229 SV
 CONNEALY BLACK GRANITE #
 EURA ELGA OF CONANGA 9109 SV
Sire: BAR R JET BLACK 5063 PV
 SITZ UPWARD 307R SV
 BAR R IRIS ANITA 0113 #
 BAR R ANITA 7081 #

DMM AMBUSH 03M #
 DBRL 03M TITAN 4T #
 DBRL BLACKBIRD 2N #
Dam: DSK TTN LADY HEATHER L66 #
 COLDSTREAM PARADOX 73N#
 COLDSTREAM LADY HEATHER 92S #
 COLDSTREAM HEATHER WHYTE 42K#

TACE
TransTasman Angus Cattle Evaluation**July 2023**TransTasman Angus
Cattle Evaluation

	CED	CEM	GL	BW	200	400	600	MCW	MILK	SS	DC	CWT	EMA	RIB	RUMP	RBY	IMF	NFI-F
EBV	-1.1	-1.6	-0.2	3.9	56	99	125	114	17	0.4	-3.1	82	5	-3.5	-3.7	1.4	0	-0.51
Acc	52%	42%	82%	70%	70%	69%	72%	66%	61%	73%	31%	61%	59%	60%	59%	53%	63%	46%

Traits Observed: GL,CE,200WT,400WT,600WT,SC,Scan(EMA,Rib,Rump,IMF),Genomics

An attractive, well made sire with a good skin and hair type. His dam has been a consistent breeder as we expect from these Titan X 92S cross full Canadian females (as is the dam of our home sire Pep). We did not use a lot of Jet Black semen in this drop but have had some quality sons and daughters come out of it.

**Lot 17**

Purchaser:.....

Price \$:.....

18

DSK SANTIAGO S115 SV**HBR****Group:****Herd Ident: NKS21S115** Genetic Conditions: AMFU, CAFU, DDFU, NHFU**DOB: 17/09/2021 Age (Mths):**

SYDGEN EXCEED 3223 PV
 SYDGEN ENHANCE SV
 SYDGEN RITA 2618 PV
Sire: GLENMORGAN ENHANCE MAN Q367 SV
 AYRVALE BARTEL E7 PV
 GLENMORGAN BARTEL LADY L111 #
 GLENMORGAN BERKLEY LADY J147 #

CONNEALY EARNAN 076E PV
 TEXAS EARNAN L612 PV
 TEXAS UNDINE H638 PV
Dam: DSK TEL ANITA Q27 #
 S V F HI ROAD#
 DSK HR ANITA M87 #
 SYDGEN ANITA 9647#

TACE
TransTasman Angus Cattle Evaluation**July 2023**TransTasman Angus
Cattle Evaluation

	CED	CEM	GL	BW	200	400	600	MCW	MILK	SS	DC	CWT	EMA	RIB	RUMP	RBY	IMF	NFI-F
EBV	-27.1	-10.4	-2.1	7.6	61	112	140	135	9	1.9	-4.4	88	6.8	-3	-4.4	1.3	1.4	0.03
Acc	48%	38%	62%	61%	68%	70%	73%	64%	50%	74%	33%	59%	54%	57%	57%	52%	54%	41%

Traits Observed: CE,200WT,400WT,600WT,SC,Scan(EMA,Rib,Rump,IMF)



A hieffers first calf and what a good one. Dam Q27 is a good type of "Big Tex" daughter with plenty of width and loads of milk. S115 shows a lot of the "Big Tex" characteristics. A real look at me type style and balance with plenty of length, strength and muscle.

Purchaser:.....

Price \$:.....

Lot 18

19

DSK JMH STELLAR S91 SV**HBR****Group: 1****Herd Ident: NKS21S91** Genetic Conditions: AMFU,CAFU,DDFU,NHFU**DOB: 30/08/2021 Age (Mths): 23**

HOFF INVESTOR S C 929 #

HOFF BLOCKBUSTER SC 929 1612 #

HOFF CHRISTINE S C 7195 929 #

Sire: JINDRA MEGAHIT PV

HOFF HEARTLAND S C 456 #

HOFF SWEETHEART S C 216 #

HOFF LADY ACE S C 884 #

YOUNG DALE KNOCKOUT 134U #

YOUNG DALE XCALIBER 32X PV

BROOKMORE TIBBIE 222T #

Dam: DSK YXC DANDALOO N16 #

DSK V6 YARDARM Y27PV

DSK YA DANDALOO B73 #

DSK DR DANDLOO Z88#

TACE

TransTasman Angus Cattle Evaluation

July 2023TransTasman Angus
Cattle Evaluation

	CED	CEM	GL	BW	200	400	600	MCW	MILK	SS	DC	CWT	EMA	RIB	RUMP	RBY	IMF	NFI-F
EBV	-10.3	4.8	-3.4	5.8	48	82	107	121	1	1	-1.4	61	7.3	-5.5	-6.8	2	0.7	0.08
Acc	52%	38%	82%	70%	71%	70%	73%	66%	60%	73%	31%	60%	59%	60%	59%	53%	63%	45%

Traits Observed: GL,CE,200WT,400WT,600WT,SC,Scan(EMA,Rib,Rump,IMF),Genomics

Plenty of growth and stretch in S91. The only Megahit son in the sale.

S91 should put extra kilos in his calves with a strong maternal pedigree going back to the powerful donor cow, B73.



Purchaser:.....

Price \$:.....

20

DSK PEP STRIKER S100 SV**HBR****Group: 1****Herd Ident: NKS21S100** Genetic Conditions: AMFU,CAFU,DDFU,NHFU**DOB: 4/09/2021 Age (Mths): 22**

CONNEALY EARNAN 076E PV

TEXAS EARNAN L612 PV

TEXAS UNDINE H638 PV

Sire: DSK TEL PEP P48 SV

DBRL 03M TITAN 4T #

DSK TTN LADY HEATHER K40 #

COLDSTREAM LADY HEATHER 92S #

YOUNG DALE KNOCKOUT 134U #

YOUNG DALE XCALIBER 32X PV

BROOKMORE TIBBIE 222T #

Dam: DSK YXC SERENE N64 #

MONTEREY COLOSSUS C44SV

DSK MONTY SERENE J8 E

MONTEREY SERENE V19#

TACE

TransTasman Angus Cattle Evaluation

July 2023TransTasman Angus
Cattle Evaluation

	CED	CEM	GL	BW	200	400	600	MCW	MILK	SS	DC	CWT	EMA	RIB	RUMP	RBY	IMF	NFI-F
EBV	-21.3	-9.9	-3.3	8.2	53	96	114	109	8	2.4	-5.1	78	3.3	-2.9	-4.4	1.3	0.1	0.41
Acc	51%	40%	68%	67%	70%	69%	71%	64%	56%	72%	30%	57%	56%	58%	58%	51%	61%	45%

Traits Observed: CE,200WT,400WT,600WT,SC,Scan(EMA,Rib,Rump,IMF),Genomics



S100 is a powerful and deep sided sire from one of our top young cows, N64 who is a granddaughter of great Serene V19 who was a tank of a cow with great length and capacity.

Purchaser:.....

Price \$:.....

21

DSK STONES SIMON S76 SV

HBR

Group: 1

Herd Id: NKS21S76 Genetic Conditions: AMFU,CAFU,DDFU,NHFU

DOB: 24/08/2021 Age (Mths): 23

BALDRIDGE XPAND X743 #

DMM AMBUSH 03M #

BALDRIDGE COLONEL C251 #

DBRL 03M TITAN 4T #

BALDRIDGE ISABEL Y69 #

DBRL BLACKBIRD 2N #

Sire: WOODHILL PATENT PV

Dam: DSK LACEY HEATHER N9 #

EF COMPLEMENT 8088 PV

COLDSTREAM PARADOX 73N#

WOODHILL EVERGREEN Y10-C62 #

COLDSTREAM LADY HEATHER 92S #

WOODHILL EVERGREEN W269-Y10 #

COLDSTREAM HEATHER WHYTE 42K#



July 2023

TransTasman Angus
Cattle Evaluation

	CED	CEM	GL	BW	200	400	600	MCW	MILK	SS	DC	CWT	EMA	RIB	RUMP	RBY	IMF	NFI-F
EBV	-4.5	-1.9	3.3	4	47	94	112	100	15	2.4	-4.4	58	2.9	-2	-0.9	0.2	2.4	-0.36
Acc	52%	39%	82%	70%	71%	69%	72%	66%	60%	72%	30%	60%	58%	59%	58%	52%	62%	45%

Traits Observed: GL,CE,200WT,400WT,600WT,SC,Scan(EMA,Rib,Rump,IMF),Genomics

A heifer's first calf born unassisted.

S76 is a stylish son of Patent who we continue to use as a heifer joining sire.

N9 has been another consistent Titan X 92S female with a son selling for \$16,000 last year.

Very proudly owned and bred by Lonnie's kids, Lacey, Hooper and Jett Stone.

Heifer joining suitable sire.

Lot 21

Purchaser:.....

Price \$:.....

22

DSK WP SPECIALTY S52 SV

HBR

Group: 1

Herd Id: NKS21S52 Genetic Conditions: AMFU,CAFU,DDFU,NHFU

DOB: 11/08/2021 Age (Mths): 23

BALDRIDGE XPAND X743 #

HOFF HI SPADE S C 491 #

BALDRIDGE COLONEL C251 #

S V F HI ROAD #

BALDRIDGE ISABEL Y69 #

LADY BLACKBIRD 111 G D A R #

Sire: WOODHILL PATENT PV

Dam: DSK HR ANITA P7 #

EF COMPLEMENT 8088 PV

SYDGEN BULLET#

WOODHILL EVERGREEN Y10-C62 #

SYDGEN ANITA 9647 #

WOODHILL EVERGREEN W269-Y10 #

THREE TREES ANITA 5133#



July 2023

TransTasman Angus
Cattle Evaluation

	CED	CEM	GL	BW	200	400	600	MCW	MILK	SS	DC	CWT	EMA	RIB	RUMP	RBY	IMF	NFI-F
EBV	7.7	6.1	-5.5	2	52	97	123	91	18	2	-5.9	70	0.1	0.4	0	-0.9	4	0.08
Acc	54%	42%	76%	70%	71%	70%	72%	66%	60%	72%	35%	60%	59%	60%	59%	53%	63%	47%

Traits Observed: GL,CE,200WT,400WT,600WT,SC,Scan(EMA,Rib,Rump,IMF),Genomics



Lot 22

Another Patent son showing the length and good muscle pattern we are consistently seeing in Patent sons.

Worth noting that S52 was the highest IMF% of all the sale bulls at a raw data score of 6.4% measured in early March 2023.

Dam, P7 is a fully imported female from the renowned Sydgen herd in the US.

Heifer joining suitable sire.

Purchaser:.....

Price \$:.....

23

DSK GI SYNERGY S36 SV**HBR****Group: 1****Herd Ident: NKS21S36** Genetic Conditions: AMFU,CAFU,DDFU,NHFU**DOB: 24/07/2021 Age (Mths): 24**G A R PROGRESS SV
G A R MOMENTUM PV
G A R BIG EYE 1770 SV**Sire: G A R INERTIA PV**G A R PROPHET SV
G A R PROPHET 2984 #
G A R DAYBREAK 1521 #TEHAMA REVERE #
S POWERPOINT WS 5503 PV
S QUEEN ESSA 248 #
Dam: DSK SPP KERRY Q39 #
DSK SUP KRACKER K21SV
DSK K21 KERRY N127 #
DSK RR KERRY H24#July 2023
TransTasman Angus
Cattle Evaluation

	CED	CEM	GL	BW	200	400	600	MCW	MILK	SS	DC	CWT	EMA	RIB	RUMP	RBY	IMF	NFI-F
EBV	-2.6	5	-5.1	5	64	106	126	105	13	-0.2	-2.9	78	9.1	-1.6	-2.8	0.8	1.3	-0.05
Acc	60%	50%	83%	71%	72%	70%	72%	69%	64%	73%	37%	62%	62%	63%	62%	57%	64%	50%

Traits Observed: GL,CE,200WT,400WT,600WT,SC,Scan(EMA,Rib,Rump,IMF),Genomics

A heifer's first calf born unassisted.

Loads of muscle on a moderate frame.
Slick coated with great skin and hair type.
His yearling maternal sister by our sire M63 is in our show team this year for exhibition at EKKA in Aug.
She shows great style, depth of side and muscle pattern on a very feminine and easy doing body.
Just goes to show the great maternal power backing this young bull.

**Lot 23**

Purchaser:.....

Price \$:.....

24

DSK PEP SILVERADO S134 SV**HBR****Group: 1****Herd Ident: NKS21S134** Genetic Conditions: AMFU,CAFU,DDFU,NHFU**DOB: 4/10/2021 Age (Mths): 21**CONNEALY EARNAN 076E PV
TEXAS EARNAN L612 PV
TEXAS UNDINE H638 PV**Sire: DSK TEL PEP P48 SV**DBRL 03M TITAN 4T #
DSK TTN LADY HEATHER K40 #
COLDSTREAM LADY HEATHER 92S #SITZ UPWARD 307R SV
DSK SUP KRACKER K21 SV
DSK HU PANDA W9 #
Dam: DSK K21 MITTAGONG P110 #
S CHISUM 6175PV
DSK CHSM MITTAGONG J16 SV
DSK RR MITTAGONG G19#July 2023
TransTasman Angus
Cattle Evaluation

	CED	CEM	GL	BW	200	400	600	MCW	MILK	SS	DC	CWT	EMA	RIB	RUMP	RBY	IMF	NFI-F
EBV	-21.5	-10.4	0.3	8.6	58	99	132	138	14	0.3	-1.5	86	0.1	-4.4	-5.8	1	0.4	-0.11
Acc	52%	40%	68%	67%	70%	69%	72%	65%	56%	73%	32%	58%	56%	58%	58%	52%	61%	46%

Traits Observed: CE,200WT,400WT,600WT,SC,Scan(EMA,Rib,Rump,IMF),Genomics

**Lot 24**

Another upstanding Pep son with tremendous muscularity and bone standing on a solid frame and going back to our great donor dam, J16 on the maternal side (see comments on Lot 2).
S134 was born unassisted but recommended over mature cows only.

Purchaser:.....

Price \$:.....

25

DSK PEP TIP TOP T49 PV

HBR

Group: 2

Herd Ident: NKS22T49 Genetic Conditions: AMFU,CAFU,DDFU,NHFU

DOB: 24/04/2022 Age (Mths): 15

CONNEALY EARNAN 076E PV

TE MANIA MODEST Z793 SV

TEXAS EARNAN L612 PV

GILMANDYKE DARBY D0107 SV

TEXAS UNDINE H638 PV

NARRANGULLEN EMILLESQUE A294 SV

Sire: DSK TEL PEP P48 SV

Dam: DSK GDK POLLY G33 SV

DBRL 03M TITAN 4T #

MERRIDALE PACK-N-POWER A46PV

DSK TTN LADY HEATHER K40 #

DSK PNP POLLY E153 #

COLDSTREAM LADY HEATHER 92S #

DSK FB POLLY U22#



July 2023

TransTasman Angus
Cattle Evaluation

	CED	CEM	GL	BW	200	400	600	MCW	MILK	SS	DC	CWT	EMA	RIB	RUMP	RBY	IMF	NFI-F
EBV	-10.5	-5.1	-2.3	7.4	65	119	157	146	16	3.9	-3	91	6.9	-4.1	-4.5	1.4	1	-0.1
Acc	53%	41%	68%	70%	71%	69%	70%	66%	58%	74%	33%	59%	58%	60%	60%	54%	62%	46%

Traits Observed: 200WT,400WT,SC,Scan(EMA,Rib,Rump,IMF),Genomics

LONG YEARLING BULL

The start of the long yearling bulls here and we lead off with a great one. Balance, softness, loads of muscle and width with sires strength. Polly G33 has been a great donor dam for us and is the dam of our in house sire, P106. Maternal brother to Lot 14.

Purchaser:.....

Price \$:.....



Lot 25

26

DSK M63 TOP DOG T31 SV

HBR

Group: 2

Herd Ident: NKS22T31 Genetic Conditions: AMFU,CAFU,DDFU,NHFU

DOB: 10/03/2022 Age (Mths): 16

YOUNG DALE KNOCKOUT 134U #

REMITALL NIGHTHAWK 37N #

YOUNG DALE XCALIBER 32X PV

REMITALL H RACHIS 21R #

BROOKMORE TIBBIE 222T #

HENDERSON MISSIE 32'02 #

Sire: DSK YXC MANHATTAN M63 PV

Dam: DSK RR LADY HEATHER L53 #

GILMANDYKE DARBY D0107 SV

COLDSTREAM PARADOX 73N#

DSK GDK FLOWER G124 SV

COLDSTREAM LADY HEATHER 92S #

DSK A21 FLOWER C18 #

COLDSTREAM HEATHER WHYTE 42K#



July 2023

TransTasman Angus
Cattle Evaluation

	CED	CEM	GL	BW	200	400	600	MCW	MILK	SS	DC	CWT	EMA	RIB	RUMP	RBY	IMF	NFI-F
EBV	-12.6	-8.8	-0.2	7.9	61	109	145	135	16	3.8	-1.4	88	7.6	-2.2	-2.1	1.6	-1.9	-0.12
Acc	51%	41%	79%	68%	69%	67%	67%	65%	58%	71%	31%	58%	57%	59%	59%	53%	61%	45%

Traits Observed: GL,200WT,400WT,SC,Scan(EMA,Rib,Rump,IMF),Genomics



Lot 26

LONG YEARLING BULL

A class act here with an outstanding temperament. He has been a mate since birth and from an exceptional dam who always has one of our top calves each year. These Rachis X 92S fully Canadian bred lady Heather females have had an impact where-ever they have gone in many different studs.

T31 is a young sire hard to fault with correctness, capacity, muscle, super easy fleshing, slick skin and soft hide, with a great outlook. Aptly named, "Top Dog".

Purchaser:.....

Price \$:.....

27

DSK M63 TOLEDO T43 SV

HBR

Group: 2

Herd Idnt: NKS22T43 Genetic Conditions: AMFU,CAFU,DDFU,NHFU

DOB: 4/04/2022 Age (Mths): 15

YOUNG DALE KNOCKOUT 134U #

REMITALL NIGHTHAWK 37N #

YOUNG DALE XCALIBER 32X PV

REMITALL H RACHIS 21R #

BROOKMORE TIBBIE 222T #

HENDERSON MISSIE 32'02 #

Sire: DSK YXC MANHATTAN M63 PV

Dam: DSK RR RUBY P127 #

GILMANDYKE DARBY D0107 SV

KBJ ROGUE II 203H#

DSK GDK FLOWER G124 SV

KBJ RUBY 305W #

DSK A21 FLOWER C18 #

KBJ RUBY 389R#

TACE

TransTasman Angus Cattle Evaluation

July 2023

TransTasman Angus
Cattle Evaluation

	CED	CEM	GL	BW	200	400	600	MCW	MILK	SS	DC	CWT	EMA	RIB	RUMP	RBY	IMF	NFI-F
EBV	-10	-13.1	-1.5	8.1	67	115	156	142	19	3	-0.9	99	5.7	-4.9	-6.4	1.6	-1.3	-0.18
Acc	50%	39%	79%	66%	68%	66%	67%	64%	56%	70%	29%	57%	55%	58%	57%	51%	59%	44%

Traits Observed: GL,200WT,400WT,SC,Scan(EMA,Rib,Rump,IMF),Genomics

LONG YEARLING BULL

When you think they can't get much better, then here comes T43. A 3/4 brother to the previous lot with the dam's being another of our Canadian imported Rachis daughters. A very stylish, eye appealing young sire and very correct on his legs and feet with the same characteristics as Lot 26 only in a slightly larger frame.

We continue to use Manhattan M63 as he hasn't had a bad one for us yet.

Purchaser:.....

Price \$:.....



Lot 27

28

DSK M63 TITAN T42 SV

HBR

Group: 2

Herd Idnt: NKS22T42 Genetic Conditions: AMFU,CAFU,DDFU,NHFU

DOB: 3/04/2022 Age (Mths): 15

YOUNG DALE KNOCKOUT 134U #

REMITALL NIGHTHAWK 37N #

YOUNG DALE XCALIBER 32X PV

REMITALL H RACHIS 21R #

BROOKMORE TIBBIE 222T #

HENDERSON MISSIE 32'02 #

Sire: DSK YXC MANHATTAN M63 PV

Dam: DSK RR LADY HEATHER N90 #

GILMANDYKE DARBY D0107 SV

COLDSTREAM PARADOX 73N#

DSK GDK FLOWER G124 SV

COLDSTREAM LADY HEATHER 92S #

DSK A21 FLOWER C18 #

COLDSTREAM HEATHER WHYTE 42K#

TACE

TransTasman Angus Cattle Evaluation

July 2023

TransTasman Angus
Cattle Evaluation

	CED	CEM	GL	BW	200	400	600	MCW	MILK	SS	DC	CWT	EMA	RIB	RUMP	RBY	IMF	NFI-F
EBV	-11.9	-10.6	-2.4	8.8	68	121	171	164	15	1.7	-2	109	4	-3.4	-3.9	1	-0.5	-0.1
Acc	50%	39%	79%	66%	68%	65%	66%	63%	57%	71%	30%	56%	55%	57%	56%	50%	59%	44%

Traits Observed: GL,200WT,400WT,SC,Scan(EMA,Rib,Rump,IMF),Genomics



Lot 28

LONG YEARLING BULL

The last of the young trio of great M63 sons and a full pedigree brother to Lot 26 with the 2 dam's being full ET sisters. Showing extra frame and length but still with that correctness and soft muscling.

T42 once again proving the maternal value of our Rachis females.

T42 is a young sire that will add frame and weight to his progeny and should leave some wonderful replacement females.

Purchaser:.....

Price \$:.....

29

DSK PEP TRUE TO TYPE T35 SV

HBR

Group: 2

Herd Ident: NKS22T35 Genetic Conditions: AMFU,CAFU,DDFU,NHFU

DOB: 28/03/2022 Age (Mths): 16

CONNEALY EARNAN 076E PV

TC FOREMAN 016 #

TEXAS EARNAN L612 PV

DSK TCF C84 PV

TEXAS UNDINE H638 PV

ALEX HR MARTINA V5 #

Sire: DSK TEL PEP P48 SV

Dam: DSK C84 FLOWER F113 #

DBRL 03M TITAN 4T #

EDI ANGUS RITO V6#

DSK TTN LADY HEATHER K40 #

DSK V6 FLOWER Y30 #

COLDSTREAM LADY HEATHER 92S #

PALES HR FLOWER V21#



July 2023

TransTasman Angus
Cattle Evaluation

	CED	CEM	GL	BW	200	400	600	MCW	MILK	SS	DC	CWT	EMA	RIB	RUMP	RBY	IMF	NFI-F
EBV	-11.1	1.7	-0.4	5.4	47	88	112	112	13	2.6	-4	64	1.5	-0.5	-0.7	0.4	0.3	0.25
Acc	52%	40%	67%	69%	71%	68%	70%	66%	58%	73%	32%	58%	57%	59%	59%	53%	61%	45%

Traits Observed: 200WT,400WT,SC,Scan(EMA,Rib,Rump,IMF),Genomics

LONG YEARLING BULL

An impressive pedigree on this outstanding young sire. A pedigree stacked with maternal excellence with Lady Heather 92S, Flower F113, Martina V5 and Flower V21. T35's dam, Flower F113 was the dam of our impressive Brisbane Royal Interbreed Champion DSK YXC New Age N71 in 2019 and was our top priced bull for that year. T35 is a young sire that will add a lot of good to anyone's program. F113 is still one of our fattest and easiest doing females in the herd and at almost 13 yrs of age is still sound as a bell.

Purchaser:.....

Price \$:.....



Lot 29

30

DSK MQ69 TRAVELLER T54 PV

HBR

Group: 2

Herd Ident: NKS22T54 Genetic Conditions: AMFU,CAFU,DDFU,NHFU

DOB: 13/05/2022 Age (Mths): 14

THOMAS UP RIVER 1614 PV

S ALLIANCE 3313 #

PRIME UP RIVER N40 SV

S CHISUM 6175 PV

PRIME ROCKLYN K94 PV

S GLORIA 464 #

Sire: MONTEREY QUARTERDECK Q69 SV

Dam: DSK CHSM MITTAGONG J16 SV

DEER VALLEY ALL IN SV

REMITALL H RACHIS 21R#

MONTEREY DUTCHESS M62 #

DSK RR MITTAGONG G19 #

MONTEREY DUTCHESS K177 #

DSK BRG MITTAGONG D68#



July 2023

TransTasman Angus
Cattle Evaluation

	CED	CEM	GL	BW	200	400	600	MCW	MILK	SS	DC	CWT	EMA	RIB	RUMP	RBY	IMF	NFI-F
EBV	8.9	9.3	-5.7	0.8	42	80	97	49	27	2	-3.8	61	2.3	1.9	3	-0.7	3.6	0.48
Acc	52%	42%	69%	68%	70%	67%	68%	65%	58%	65%	35%	58%	57%	59%	59%	52%	62%	48%

Traits Observed: 200WT,400WT,Genomics



LONG YEARLING BULL

The youngest sire in the draft this year and a maternal brother to the \$30k equal top priced bull last year, selling to Hewitt Cattle Australia for their seedstock bull breeding unit. J16 has been an awesome breeder and T54 is no exception, showing style, correctness, muscle and plenty of volume. J16 was a successful donor for us and has many progeny coming through and daughters already in production including the dam of Lot 2 (see comments).

Suitable for safe use on all types of heifers.

Purchaser:.....

Price \$:.....

Lot 30

31

DSK STAYED LATE S169 SV

HBR

Group: 2

Herd Ident: NKS21S169 Genetic Conditions: AMFU,CAFU,DDFU,NHFU

DOB: 28/12/2021 Age (Mths): 19

CONNEALY EARNAN 076E PV
TEXAS EARNAN L612 PV
TEXAS UNDINE H638 PV

REMITALL NIGHTHAWK 37N #
REMITALL H RACHIS 21R #
HENDERSON MISSIE 32'02 #

Sire: DSK TEL PEP P48 SV

Dam: DSK RR SHADY LADY K20 #

DBRL 03M TITAN 4T #
DSK TTN LADY HEATHER K40 #
COLDSTREAM LADY HEATHER 92S #

DSK HLE ATOMIC BIG EARS A99PV
DSK ABE SHADY LADY D1 PV
DSK HR SHADY LADY W62#



July 2023

TransTasman Angus
Cattle Evaluation

	CED	CEM	GL	BW	200	400	600	MCW	MILK	SS	DC	CWT	EMA	RIB	RUMP	RBV	IMF	NFI-F
EBV	-2.1	-1.7	0.5	3.6	44	82	91	74	16	0.6	-4	67	0.4	0.3	1	0.1	1.7	-0.21
Acc	53%	44%	68%	68%	69%	67%	68%	64%	57%	68%	34%	57%	56%	58%	58%	52%	60%	46%

Traits Observed: 400WT(x2),SC,Scan(EMA,Rib,Rump,IMF),Genomics

Stylish and eye catching younger bull with a lot of commercial focus. Good skin, plenty of muscle and correct on his legs and feet. Very good maternal pedigree backing him with Rachis and Big Ears as sires and our top breeding female W62 who was the dam of our 2007 Sydney Interbreed Champion bull DSK Ahead of the Pack and sold for \$27,000 to long time clients the Groth family of Barraba.



Lot 31

Purchaser:.....

Price \$:.....

32

DSK PEP SILVER S168 SV

HBR

Group: 2

Herd Ident: NKS21S168 Genetic Conditions: AMFU,CAFU,DDFU,NHFU

DOB: 20/12/2021 Age (Mths): 19

CONNEALY EARNAN 076E PV
TEXAS EARNAN L612 PV
TEXAS UNDINE H638 PV

YOUNG DALE KNOCKOUT 134U #
YOUNG DALE XCALIBER 32X PV
BROOKMORE TIBBIE 222T #

Sire: DSK TEL PEP P48 SV

Dam: DSK YXC FANFARE L117 #

DBRL 03M TITAN 4T #
DSK TTN LADY HEATHER K40 #
COLDSTREAM LADY HEATHER 92S #

MONTEREY VIRTUOSO V200#
MONTEREY FANFARE X69 #
MONTEREY FANFARE U35#



July 2023

TransTasman Angus
Cattle Evaluation

	CED	CEM	GL	BW	200	400	600	MCW	MILK	SS	DC	CWT	EMA	RIB	RUMP	RBV	IMF	NFI-F
EBV	2.6	0.1	-3.5	3	35	72	76	70	7	1.3	-6.2	45	6.6	1.2	0.5	0.9	2.1	0.56
Acc	51%	40%	65%	68%	70%	68%	69%	65%	56%	70%	31%	57%	56%	59%	58%	52%	60%	45%

Traits Observed: 400WT(x2),SC,Scan(EMA,Rib,Rump,IMF),Genomics



Lot 32

Another good style of sire here in this younger group. A very complete type of sire with structural soundness and commercial focus. The maternal side of the pedigree goes back to X69 who was a donor who had very good flush of calves sired by Rachis with 5 full ET brothers all selling well as yearlings

Purchaser:.....

Price \$:.....

33

DSK PEP SCOTTY S166 SV

HBR

Group: 2

Herd Idnt: NKS21S166 Genetic Conditions: AMFU,CAFU,DDFU,NHFU

DOB: 11/12/2021 Age (Mths): 19

CONNEALY EARNAN 076E PV
TEXAS EARNAN L612 PV
TEXAS UNDINE H638 PV

YOUNG DALE KNOCKOUT 134U #
YOUNG DALE XCALIBER 32X PV
BROOKMORE TIBBIE 222T #

Sire: DSK TEL PEP P48 SV

Dam: DSK YXC BENHILDA L132 #

DBRL 03M TITAN 4T #
DSK TTN LADY HEATHER K40 #
COLDSTREAM LADY HEATHER 92S #

REMITALL H RACHIS 21R#
DSK RR BENHILDA H61 #
DSK PNP BENHILDA F100#



July 2023

TransTasman Angus
Cattle Evaluation

	CED	CEM	GL	BW	200	400	600	MCW	MILK	SS	DC	CWT	EMA	RIB	RUMP	RBY	IMF	NFI-F
EBV	-18.2	0.1	-1.2	8.1	63	116	143	152	4	3	-3.2	85	5.7	-6.3	-8.8	2.1	0.2	0.08
Acc	51%	40%	68%	69%	70%	69%	70%	66%	57%	69%	31%	58%	57%	60%	59%	53%	61%	45%

Traits Observed: 400WT(x2),SC,Scan(EMA,Rib,Rump,IMF),Genomics

Don't overlook this sound, long bodied young sire who is only 19 months of age at sale time. This bull displays good length with great neck extension. Dam, L132 is a big volume cow who is a cross of our 2 Canadian sires, Rachis and Xcaliber which is proving it's worth in any of our females.



Lot 33

Purchaser:.....

Price \$:.....

34

DSK PEP SERENITY S165 SV

HBR

Group: 1

Herd Idnt: NKS21S165 Genetic Conditions: AMFU,CAFU,DDFU,NHFU

DOB: 24/11/2021 Age (Mths): 20

CONNEALY EARNAN 076E PV
TEXAS EARNAN L612 PV
TEXAS UNDINE H638 PV

YOUNG DALE KNOCKOUT 134U #
YOUNG DALE XCALIBER 32X PV
BROOKMORE TIBBIE 222T #

Sire: DSK TEL PEP P48 SV

Dam: DSK YXC DANDALOO N51 #

DBRL 03M TITAN 4T #
DSK TTN LADY HEATHER K40 #
COLDSTREAM LADY HEATHER 92S #

DSK PNP D150SV
DSK D150 DANDALOO G52 #
DSK X1 DANDALOO D101 D104#



July 2023

TransTasman Angus
Cattle Evaluation

	CED	CEM	GL	BW	200	400	600	MCW	MILK	SS	DC	CWT	EMA	RIB	RUMP	RBY	IMF	NFI-F
EBV	-11.1	-6.1	0.3	7.4	60	110	137	144	7	3.2	-3.8	82	2.3	-2	-3.4	0.8	1	-0.09
Acc	51%	40%	68%	68%	70%	69%	72%	65%	56%	72%	30%	58%	56%	59%	59%	52%	60%	44%

Traits Observed: CE,200WT,400WT,600WT,SC,Scan(EMA,Rib,Rump,IMF),Genomics



Another good Pep son here from a good Xcaliber female who was shown and won her class at the Angus Roundup as a heifer and has become a good solid breeding cow for us.

Purchaser:.....

Price \$:.....

Lot 34

35

DSK PEP STAR POWER S163 SV

HBR

Group: 1

Herd Idnt: NKS21S163 Genetic Conditions: AMFU,CAFU,DDFU,NHFU

DOB: 11/11/2021 Age (Mths): 20

CONNEALY EARNAN 076E PV
TEXAS EARNAN L612 PV
TEXAS UNDINE H638 PV

YOUNG DALE KNOCKOUT 134U #
YOUNG DALE XCALIBER 32X PV
BROOKMORE TIBBIE 222T #

Sire: DSK TEL PEP P48 SV

Dam: DSK YXC LADY HEATHER M9 #

DBRL 03M TITAN 4T #
DSK TTN LADY HEATHER K40 #
COLDSTREAM LADY HEATHER 92S #

COLDSTREAM PARADOX 73N#
COLDSTREAM LADY HEATHER 92S #
COLDSTREAM HEATHER WHYTE 42K#

TACE
TransTasman Angus Cattle Evaluation

July 2023

TransTasman Angus
Cattle Evaluation

	CED	CEM	GL	BW	200	400	600	MCW	MILK	SS	DC	CWT	EMA	RIB	RUMP	RBY	IMF	NFI-F
EBV	-21.2	-10.8	-1	8.7	61	108	130	138	11	2	-4.1	76	3.1	-3.3	-4.4	1.4	0	-0.01
Acc	53%	41%	68%	70%	72%	71%	74%	67%	59%	74%	32%	60%	59%	61%	61%	55%	63%	47%

Traits Observed: CE,200WT,400WT,600WT,SC,Scan(EMA,Rib,Rump,IMF),Genomics

Only a November drop here and what a prospect. His dam, M9 is also the dam of Lady Heather R73 who sold at Auction last year for \$27,000 and went on to win a strong class at Sydney Royal 2022. With a maternal pedigree like this, S163 will make an impact on your program.



Lady Heather R73

Purchaser:.....

Price \$:.....

36

DSK GEM STEVO S64 SV

HBR

Group: 1

Herd Idnt: NKS21S64 Genetic Conditions: AMFU,CAFU,DDFU,NHFU

DOB: 19/08/2021 Age (Mths): 23

SYDGEN EXCEED 3223 PV
SYDGEN ENHANCE SV
SYDGEN RITA 2618 PV

TEHAMA REVERE #
S POWERPOINT WS 5503 PV
S QUEEN ESSA 248 #

Sire: GLENMORGAN ENHANCE MAN Q367 SV

Dam: DSK SPP LADY HEATHER Q68 #

AYRVALE BARTEL E7 PV
GLENMORGAN BARTEL LADY L111 #
GLENMORGAN BERKLEY LADY J147 #

S A V REVERE 1180#
DSK SRV LADY HEATHER L79 #
COLDSTREAM LADY HEATHER 92S#

TACE
TransTasman Angus Cattle Evaluation

July 2023

TransTasman Angus
Cattle Evaluation

	CED	CEM	GL	BW	200	400	600	MCW	MILK	SS	DC	CWT	EMA	RIB	RUMP	RBY	IMF	NFI-F
EBV	-2.7	7.6	-1.2	5.4	62	112	150	134	19	2	-3.7	84	6.4	-2.7	-2.2	0.7	1.5	-0.33
Acc	53%	42%	70%	66%	69%	67%	70%	64%	58%	71%	31%	57%	56%	58%	58%	51%	61%	46%

Traits Observed: CE,200WT,400WT,600WT,SC,Scan(EMA,Rib,Rump,IMF),Genomics



Lot 36

A heifer's first calf born unassisted.

A large volume bull on good feet and legs with a lot of depth of rib and flank. Out of another one of our good producing Lady Heather cow lines by the easy heifer calving sire, Enhance Man.

S64 should be suitable for use on larger framed heifers.

Purchaser:.....

Price \$:.....

37

DSK PEP STEELER S122 SV**HBR****Group: 1****Herd Idnt:** NKS21S122 Genetic Conditions: AMFU,CAFU,DDFU,NHFU**DOB:** 21/09/2021 **Age (Mths):** 22

CONNEALY EARNAN 076E PV
 TEXAS EARNAN L612 PV
 TEXAS UNDINE H638 PV

REMITALL NIGHTHAWK 37N #
 REMITALL H RACHIS 21R #
 HENDERSON MISSIE 32'02 #

Sire: DSK TEL PEP P48 SV**Dam:** DSK RR DANDALOO N1 #

DBRL 03M TITAN 4T #
 DSK TTN LADY HEATHER K40 #
 COLDSTREAM LADY HEATHER 92S #

DSK PNP D150SV
 DSK D150 DANDALOO H89 SV
 DSK YA DANDALOO B73#



July 2023

TransTasman Angus
Cattle Evaluation

	CED	CEM	GL	BW	200	400	600	MCW	MILK	SS	DC	CWT	EMA	RIB	RUMP	RBY	IMF	NFI-F
EBV	-8.8	-2.3	-2.3	4.6	41	83	101	86	15	2.6	-6	56	2.6	1.9	2.9	-0.1	2.4	0.54
Acc	52%	40%	66%	68%	70%	69%	72%	65%	57%	73%	31%	58%	56%	58%	58%	52%	60%	45%

Traits Observed: CE,200WT,400WT,600WT,SC,Scan(EMA,Rib,Rump,IMF),Genomics

S122 is a real eye catcher. Long and smooth with great skin but has tremendous width of frame with loads of muscle on great feet and legs. The maternal side of S122 is one of our best with Rachis and H89 and the Lady Heather side of sire, Pep. A very good bull for someone looking for performance and improving maternal lines of replacement females.

**Lot 37**

Purchaser:.....

Price \$:.....

38

DSK PEP STREAKER S124 PV**HBR****Group: 1****Herd Idnt:** NKS21S124 Genetic Conditions: AMFU,CAFU,DDFU,NHFU**DOB:** 23/09/2021 **Age (Mths):** 22

CONNEALY EARNAN 076E PV
 TEXAS EARNAN L612 PV
 TEXAS UNDINE H638 PV

YOUNG DALE KNOCKOUT 134U #
 YOUNG DALE XCALIBER 32X PV
 BROOKMORE TIBBIE 222T #

Sire: DSK TEL PEP P48 SV**Dam:** DSK YXC PANDA N P021 SV

DBRL 03M TITAN 4T #
 DSK TTN LADY HEATHER K40 #
 COLDSTREAM LADY HEATHER 92S #

J R JUICE Z005#
 ALEX Z005 PANDA B120 #
 ALEX PD PANDA V2#



July 2023

TransTasman Angus
Cattle Evaluation

	CED	CEM	GL	BW	200	400	600	MCW	MILK	SS	DC	CWT	EMA	RIB	RUMP	RBY	IMF	NFI-F
EBV	-14.8	-9.3	-1.7	8.4	62	105	127	136	6	3	-3.2	71	5.2	-4.4	-5.5	1.2	0.8	0
Acc	52%	40%	66%	68%	70%	70%	72%	65%	57%	73%	32%	58%	57%	59%	59%	52%	61%	46%

Traits Observed: CE,200WT,400WT,600WT,SC,Scan(EMA,Rib,Rump,IMF),Genomics



A larger framed Pep son again with loads of strength of spine and bone and carries a great muscle pattern into a good deep side. Pep sons are very correctly made on good square frames. S124 is out of another very good and consistent Xcaliber x Panda daughter.

Purchaser:.....

Price \$:.....

Lot 38

39

DSK SILVER DOLLAR S148 SV**HBR****Group: 1****Herd Idnt: NKS21S148** Genetic Conditions: AMFU,CAFU,DDFU,NHFU**DOB: 24/10/2021 Age (Mths): 21**CONNEALY EARNAN 076E PV
TEXAS EARNAN L612 PV
TEXAS UNDINE H638 PVG A R RETAIL PRODUCT #
CONNEALY MENTOR 7374 SV
EXECUTA OF CONANGA 939 #**Sire: DSK TEL PEP P48 SV****Dam: DSK CMT LADY HEATHER N47 #**DBRL 03M TITAN 4T #
DSK TTN LADY HEATHER K40 #
COLDSTREAM LADY HEATHER 92S #REMITALL H RACHIS 21R#
DSK RR LADY HEATHER L67 #
COLDSTREAM LADY HEATHER 92S#**TACE**
TransTasman Angus Cattle Evaluation**July 2023**TransTasman Angus
Cattle Evaluation

		CED	CEM	GL	BW	200	400	600	MCW	MILK	SS	DC	CWT	EMA	RIB	RUMP	RBV	IMF	NFI-F
EBV		-11.6	-9.2	1	7.3	56	107	128	121	11	2.3	-4.2	85	5.3	-1.5	-0.7	1	0.6	0.08
Acc		53%	42%	69%	68%	71%	69%	72%	66%	58%	73%	33%	59%	58%	60%	59%	53%	62%	46%

Traits Observed: CE,200WT,400WT,600WT,SC,Scan(EMA,Rib,Rump,IMF),Genomics

A smooth and slick skinned son of Pep out of one of our favourite Lady Heather cow lines. Loads of length and muscle on good bone with a great outlook.

**Lot 39**

Purchaser:.....

Price \$:.....

40

DSK YXC STALLONE S84 SV**HBR****Group: 1****Herd Idnt: NKS21S84** Genetic Conditions: AMFU,CAFU,DDFU,NHFU**DOB: 28/08/2021 Age (Mths): 23**LAGRAND MAF ANTIDOTE 5775 #
YOUNG DALE KNOCKOUT 134U #
YOUNG DALE ERICA 26N #REMITALL NIGHTHAWK 37N #
REMITALL H RACHIS 21R #
HENDERSON MISSIE 32'02 #**Sire: YOUNG DALE XCALIBER 32X PV****Dam: DSK RR FANFARE K13 #**S A V 004 DENSITY 4336 SV
BROOKMORE TIBBIE 222T #
BROOKMORE TIBBIE 35N #MONTEREY VIRTUOSO V200#
MONTEREY FANFARE X69 #
MONTEREY FANFARE U35#**TACE**
TransTasman Angus Cattle Evaluation**July 2023**TransTasman Angus
Cattle Evaluation

		CED	CEM	GL	BW	200	400	600	MCW	MILK	SS	DC	CWT	EMA	RIB	RUMP	RBV	IMF	NFI-F
EBV		-5.6	-2.1	-4.9	7.3	53	100	127	136	10	1.4	-2.5	76	6.6	-2.6	-4.5	1.7	-0.1	-0.2
Acc		55%	44%	83%	70%	71%	71%	73%	67%	64%	74%	34%	62%	60%	62%	61%	56%	63%	46%

Traits Observed: GL,CE,200WT,400WT,600WT,SC,Scan(EMA,Rib,Rump,IMF),Genomics

**Lot 40**

An Xcaliber son out of one of our more moderate Rachis daughters that we flushed last year. This is the cross we envisaged when we bought Xcaliber in to use over the Rachis daughters. S84 is keeping the strength and muscularity of the Xcaliber's but has the softness and correctness with the great maternal backing of the Rachis daughters. Very sound, very correct and smoothly made.

Purchaser:.....

Price \$:.....

41

DSK JB SHERMAN S95 SV**HBR****Group: 1****Herd Id:** NKS21S95 Genetic Conditions: AMFU,CAFU,DDFU,NHFU**DOB: 2/09/2021 Age (Mths): 22**

CONNEALY CONSENSUS 7229 SV
 CONNEALY BLACK GRANITE #
 EURA ELGA OF CONANGA 9109 SV
Sire: BAR R JET BLACK 5063 PV
 SITZ UPWARD 307R SV
 BAR R IRIS ANITA 0113 #
 BAR R ANITA 7081 #

DMM AMBUSH 03M #
 DBRL 03M TITAN 4T #
 DBRL BLACKBIRD 2N #
Dam: DSK TTN LADY HEATHER L65 #
 COLDSTREAM PARADOX 73N#
 COLDSTREAM LADY HEATHER 92S #
 COLDSTREAM HEATHER WHYTE 42K#

TACE

TransTasman Angus Cattle Evaluation

July 2023TransTasman Angus
Cattle Evaluation

	CED	CEM	GL	BW	200	400	600	MCW	MILK	SS	DC	CWT	EMA	RIB	RUMP	RBY	IMF	NFI-F
EBV	-1.9	-0.8	-1.5	5.1	52	89	112	115	9	0.7	-2.6	66	3.4	-2.1	-3.1	0.8	1.4	-0.21
Acc	52%	40%	82%	70%	70%	69%	71%	65%	61%	72%	31%	60%	59%	59%	58%	53%	63%	46%

Traits Observed: GL,CE,200WT,400WT,600WT,SC,Scan(EMA,Rib,Rump,IMF),Genomics

A good young Jet Black son, solid and correct, out of yet another one of our great producing, full Canadian blood, Titan X 92S daughters. These females have produced in the top end of the draft since their first calf showing strength and consistency of type throughout.

**Lot 41**

Purchaser:.....

Price \$:.....

42

DSK GJB SUPER S128 PV**HBR****Group: 1****Herd Id:** NKS21S128 Genetic Conditions: AMFU,CAFU,DDFU,NHFU**DOB: 23/09/2021 Age (Mths): 22**

REMITALL H RACHIS 21R #
 DSK RR JIMBOB J21 SV
 DSK GDK MILDRED G36 #
Sire: GLENISA JIMBOB P203 SV
 DULVERTON CRACKER C056 CV
 GLENISA C56 JANIE E173 #
 GLENISA Z40 JANIE B114 #

YOUNG DALE KNOCKOUT 134U #
 YOUNG DALE XCALIBER 32X PV
 BROOKMORE TIBBIE 222T #
Dam: DSK YXC PANDA L84 SV
 HOFF ULTRA S C 108#
 DSK HU PANDA W9 #
 DSK PM PANDA R3+96#

TACE

TransTasman Angus Cattle Evaluation

July 2023TransTasman Angus
Cattle Evaluation

	CED	CEM	GL	BW	200	400	600	MCW	MILK	SS	DC	CWT	EMA	RIB	RUMP	RBY	IMF	NFI-F
EBV	-2.3	-3.8	-4	6.9	59	106	142	142	10	0.8	-0.4	90	2.2	-4.5	-5.2	1	0.3	-0.34
Acc	50%	39%	65%	68%	69%	68%	72%	64%	57%	72%	31%	57%	56%	58%	58%	51%	60%	45%

Traits Observed: CE,200WT,400WT,600WT,SC,Scan(EMA,Rib,Rump,IMF),Genomics

**Lot 42**

A very sound and balanced young sire from one of our favourite Panda x Xcaliber daughters.

Purchaser:.....

Price \$:.....

43

DSK YXC SPARKY S40 PV

HBR

Group: 1

Herd Idnt: NKS21S40 Genetic Conditions: AMFU,CAFU,DDFU,NHFU

DOB: 31/07/2021 Age (Mths): 24

LAGRAND MAF ANTIDOTE 5775 #
 YOUNG DALE KNOCKOUT 134U #
 YOUNG DALE ERICA 26N #

Sire: YOUNG DALE XCALIBER 32X PV

S A V 004 DENSITY 4336 SV
 BROOKMORE TIBBIE 222T #
 BROOKMORE TIBBIE 35N #

Dam: YOUNG DALE POLLYANNA 22P #

YOUNG DALE REAL DEAL 18K#
 YOUNG DALE POLLYANNA 18M #
 DOUBLE J POLLYANNA 253G#

TACE

TransTasman Angus Cattle Evaluation

July 2023

TransTasman Angus
Cattle Evaluation

	CED	CEM	GL	BW	200	400	600	MCW	MILK	SS	DC	CWT	EMA	RIB	RUMP	RBY	IMF	NFI-F
EBV	-4.6	-1.1	-1.4	6.2	51	89	115	116	9	1.1	-2.3	67	4.5	-3.8	-4.4	1.8	-0.8	-0.26
Acc	50%	39%	64%	67%	70%	71%	72%	66%	63%	71%	30%	63%	59%	59%	57%	53%	60%	41%

Traits Observed: 200WT,400WT,600WT,SC,Scan(EMA,Rib,Rump,IMF)

A full ET brother to Lot 13.
 Strong bone with great length and muscle.
 The Xcaliber progeny are producing very strongly
 and consistently as you can see throughout this
 catalogue with use of a son, M63 and many of his
 daughters being some of our top end productive
 females.



Young Dale Pollyanna 22P

Purchaser:.....

Price \$:.....

44

DSK GI SUMMIT S37 PV

HBR

Group: 1

Herd Idnt: NKS21S37 Genetic Conditions: AMFU,CAFU,DDFU,NHFU

DOB: 26/07/2021 Age (Mths): 24

G A R PROGRESS SV
 G A R MOMENTUM PV
 G A R BIG EYE 1770 SV

Sire: G A R INERTIA PV

G A R PROPHET SV
 G A R PROPHET 2984 #
 G A R DAYBREAK 1521 #

Dam: DSK SPP PANDA Q26 PV

YOUNG DALE XCALIBER 32XPV
 DSK YXC PANDA N P022 SV
 ALEX Z005 PANDA B120#

TACE

TransTasman Angus Cattle Evaluation

July 2023

TransTasman Angus
Cattle Evaluation

	CED	CEM	GL	BW	200	400	600	MCW	MILK	SS	DC	CWT	EMA	RIB	RUMP	RBY	IMF	NFI-F
EBV	1.2	4.1	-4.2	4.2	54	97	120	98	17	2	-4.4	59	4.9	0	0.1	-0.6	3.3	0.43
Acc	61%	50%	82%	72%	73%	71%	73%	70%	65%	74%	38%	63%	63%	64%	64%	58%	66%	51%

Traits Observed: GL,CE,200WT,400WT,600WT,SC,Scan(EMA,Rib,Rump,IMF),Genomics

**A heifer's first calf born unassisted.**

The last of the Inertia sons.

A moderate, well made bull out of a great Panda
 female line again with Xcaliber and Powerpoint in
 the maternal line.

Suitable for use on heifers.

Purchaser:.....

Price \$:.....

Lot 44

45

DSK GEM SHADOW S56 SV

HBR

Group: 1

Herd Ident: NKS21S56 Genetic Conditions: AMFU,CAFU,DDFU,NHFU

DOB: 14/08/2021 Age (Mths): 23

SYDGEN EXCEED 3223 PV

CONNEALY EARNAN 076E PV

SYDGEN ENHANCE SV

TEXAS EARNAN L612 PV

SYDGEN RITA 2618 PV

TEXAS UNDINE H638 PV

Sire: GLENMORGAN ENHANCE MAN Q367 SV

Dam: DSK TEL ISOBYX Q72 #

AYRVALE BARTEL E7 PV

MERRIDALE PACK-N-POWER A46PV

GLENMORGAN BARTEL LADY L111 #

DSK PNP ISOBYX G175 #

GLENMORGAN BERKLEY LADY J147 #

DSK HR ISOBYX V31#



July 2023

TransTasman Angus
Cattle Evaluation

	CED	CEM	GL	BW	200	400	600	MCW	MILK	SS	DC	CWT	EMA	RIB	RUMP	RBY	IMF	NFI-F
EBV	2.1	1.4	-2.7	3.7	56	107	142	125	20	1.3	-5.1	79	4.8	-0.9	-0.7	0	2	-0.35
Acc	53%	43%	67%	66%	68%	67%	70%	64%	57%	71%	33%	56%	56%	58%	58%	51%	61%	46%

Traits Observed: CE,200WT,400WT,600WT,SC,Scan(EMA,Rib,Rump,IMF),Genomics

A heifer's first calf born unassisted.

A smooth made son of Enhance Man and out of a very long and refined female and he was easy born out of a first calf heifer.

Maternal granddam, G175 is still producing in the main herd as a 12 yr old matron.

Suitable for use on heifers.



Lot 45

Purchaser:.....

Price \$:.....

46

DSK JB SHADOW BOXER S136 SV

HBR

Group: 1

Herd Ident: NKS21S136 Genetic Conditions: AMFU,CAFU,DDFU,NHFU

DOB: 5/10/2021 Age (Mths): 21

REMITALL H RACHIS 21R #

YOUNG DALE KNOCKOUT 134U #

DSK RR JIMBOB J21 SV

YOUNG DALE XCALIBER 32X PV

DSK GDK MILDRED G36 #

BROOKMORE TIBBIE 222T #

Sire: GLENISA JIMBOB P203 SV

Dam: DSK YXC LADY HEATHER L74 #

DULVERTON CRACKER C056 SV

COLDSTREAM PARADOX 73N#

GLENISA C56 JANIE E173 #

COLDSTREAM LADY HEATHER 92S #

GLENISA Z40 JANIE B114 #

COLDSTREAM HEATHER WHYTE 42K#



July 2023

TransTasman Angus
Cattle Evaluation

	CED	CEM	GL	BW	200	400	600	MCW	MILK	SS	DC	CWT	EMA	RIB	RUMP	RBY	IMF	NFI-F
EBV	0.4	1.5	-3.2	4	57	97	118	131	6	2.3	-3.4	75	3.4	-2.9	-3.3	1.5	-0.6	-0.33
Acc	50%	39%	65%	67%	68%	68%	71%	63%	57%	72%	29%	57%	54%	56%	56%	49%	59%	43%

Traits Observed: CE,200WT,400WT,600WT,SC,Scan(EMA,Rib,Rump,IMF),Genomics



Coldstream Lady Heather 92S

Long with great skin and hair on this young bull. One of the larger framed Jimbob sons out of what is probably our largest framed female.

The Lady Heather 92S females have been our best find of all the imported female genetics that we have sourced. 92S continued to breed commercially in Canada until she was 17yrs of age. Sound and reliable.

Purchaser:.....

Price \$:.....

47

DSK PEP SALTBUSS S105 SV

HBR

Group: 1

Herd Ident: NKS21S105 Genetic Conditions: AMFU,CAFU,DDFU,NHFU

DOB: 8/09/2021 Age (Mths): 22

CONNEALY EARNAN 076E PV

TEXAS EARNAN L612 PV

TEXAS UNDINE H638 PV

Sire: DSK TEL PEP P48 SV

DBRL 03M TITAN 4T #

DSK TTN LADY HEATHER K40 #

COLDSTREAM LADY HEATHER 92S #

SITZ UPWARD 307R SV

DSK SUP KRACKER K21 SV

DSK HU PANDA W9 #

Dam: DSK K21 KERRY N127 #

REMITALL H RACHIS 21R#

DSK RR KERRY H24 #

DSK GHM KERRY C88#



July 2023

TransTasman Angus
Cattle Evaluation

	CED	CEM	GL	BW	200	400	600	MCW	MILK	SS	DC	CWT	EMA	RIB	RUMP	RBY	IMF	NFI-F
EBV	-16.3	-3.4	-1.4	6.9	48	86	97	91	7	1.3	-4.6	67	7.5	-3.2	-3.5	2.1	-0.6	0
Acc	51%	40%	66%	67%	70%	68%	71%	64%	56%	72%	31%	57%	55%	57%	57%	51%	60%	45%

Traits Observed: CE,200WT,400WT,600WT,SC,Scan(EMA,Rib,Rump,IMF),Genomics

A Pep son showing strong muscle pattern and loads of length with great spine strength. Large framed animals throughout this pedigree but very sound and reliably fertile with Kracker K21 daughters being some of our most prized females.



Lot 47

Purchaser:.....

Price \$:.....

48

DSK MQ69 TRACTION T47 SV

HBR

Group: 2

Herd Ident: NKS22T47 Genetic Conditions: AMFU,CAFU,DDFU,NHFU

DOB: 22/04/2022 Age (Mths): 15

THOMAS UP RIVER 1614 PV

PRIME UP RIVER N40 SV

PRIME ROCKLYN K94 PV

Sire: MONTEREY QUARTERDECK Q69 SV

DEER VALLEY ALL IN SV

MONTEREY DUTCHESS M62 #

MONTEREY DUTCHESS K177 #

S A V NET WORTH 4200 #

YOUNG DALE PANARAMA 66T #

YOUNG DALE POLLYANNA 22P #

Dam: DSK 66T 20W BONNIE P60 #

JL FINAL ANSWER 07030#

FLEURY BONNIE 20W #

FLEURY BONNIE 6T#



July 2023

TransTasman Angus
Cattle Evaluation

	CED	CEM	GL	BW	200	400	600	MCW	MILK	SS	DC	CWT	EMA	RIB	RUMP	RBY	IMF	NFI-F
EBV	6.5	6.6	-8	3.5	36	66	82	60	20	0.9	-3.5	41	6.6	2.1	2.6	0.2	2.3	0.44
Acc	48%	37%	65%	65%	68%	65%	66%	63%	56%	69%	29%	55%	54%	56%	56%	49%	59%	44%

Traits Observed: 200WT,400WT,SC,Scan(EMA,Rib,Rump,IMF),Genomics



Lot 48

LONG YEARLING BULL

One of the younger bulls in the draft. Out of one of our more moderate matings from a fully Canadian female.

Calf by the Monterey bull we purchased for use on heifers. All born unassisted.

This young calf is very safe and **suitable for use on all types of heifers.**

Purchaser:.....

Price \$:.....

49

DSK MQ69 TROOPER T46 SV

HBR

Group: 2

Herd Ident: NKS22T46 Genetic Conditions: AMFU,CAFU,DDFU,NHFU

DOB: 18/04/2022 Age (Mths): 15

THOMAS UP RIVER 1614 PV
PRIME UP RIVER N40 SV
PRIME ROCKLYN K94 PV

Sire: MONTEREY QUARTERDECK Q69 SV

DEER VALLEY ALL IN SV
MONTEREY DUTCHESS M62 #
MONTEREY DUTCHESS K177 #

SITZ UPWARD 307R SV
DSK SUP KRACKER K21 SV
DSK HU PANDA W9 #

Dam: DSK K21 HI BALL P124 #

V D A R NEW TREND 315#
DSK 315 HI BALL K5 #
MONTEREY HI-BALL A2#

TACE

TransTasman Angus Cattle Evaluation

July 2023

TransTasman Angus
Cattle Evaluation

	CED	CEM	GL	BW	200	400	600	MCW	MILK	SS	DC	CWT	EMA	RIB	RUMP	RBV	IMF	NFI-F
EBV	3	7	-3.5	4.3	37	60	77	48	18	1.5	-4.8	34	4.6	2	2.3	-0.3	2.9	0.07
Acc	50%	41%	68%	66%	68%	66%	67%	64%	56%	69%	31%	56%	55%	57%	57%	50%	60%	45%

Traits Observed: 200WT,400WT,SC,Scan(EMA,Rib,Rump,IMF),Genomics

LONG YEARLING BULL

A young bull by the safe calving sire Quarterdeck.
This young sire will develop into a good framed
mature animal with Kracker and 315 in his maternal
pedigree.

Well made though and should be
suitable for use on heifers.

Purchaser:.....

Price \$:.....



Lot 49

50

DSK MQ69 TURN AROUND T52 SV

HBR

Group: 2

Herd Ident: NKS22T52 Genetic Conditions: AMFU,CAFU,DDFU,NHFU

DOB: 29/04/2022 Age (Mths): 15

THOMAS UP RIVER 1614 PV
PRIME UP RIVER N40 SV
PRIME ROCKLYN K94 PV

Sire: MONTEREY QUARTERDECK Q69 SV

DEER VALLEY ALL IN SV
MONTEREY DUTCHESS M62 #
MONTEREY DUTCHESS K177 #

S A V NET WORTH 4200 #
YOUNG DALE PANARAMA 66T #
YOUNG DALE POLLYANNA 22P #

Dam: DSK 66T 1U BLACKCAP P45 #

DOUBLE AA BLACKMAN 414'06#
FLEURY BLACKCAP 1U #
VALLEYHILLS BLACKCAP 20K#

TACE

TransTasman Angus Cattle Evaluation

July 2023

TransTasman Angus
Cattle Evaluation

	CED	CEM	GL	BW	200	400	600	MCW	MILK	SS	DC	CWT	EMA	RIB	RUMP	RBV	IMF	NFI-F
EBV	-6.2	-1.9	2.7	6.4	51	88	112	93	18	1.8	-4.6	66	4.8	-0.2	0.6	0.6	0.4	-0.03
Acc	47%	37%	63%	65%	67%	64%	65%	62%	55%	68%	28%	55%	52%	54%	54%	47%	58%	43%

Traits Observed: 200WT,400WT,SC,Scan(EMA,Rib,Rump,IMF),Genomics



LONG YEARLING BULL

The second youngest bull in the draft.
Out of another of our moderate framed matings
from a fully Canadian female.
By the Monterey bull we purchased for use on
heifers.
All born unassisted.
This young calf is
suitable for use on heifers.

Purchaser:.....

Price \$:.....

Lot 50

51

DSK YXC TOMALLA T39 SV

HBR

Group: 2

Herd Ident: NKS22T39 Genetic Conditions: AMFU,CAF,DDFU,NHFU

DOB: 31/03/2022 Age (Mths): 17

LAGRAND MAF ANTIDOTE 5775 #

CARENDA STOCKMAN D34 SV

YOUNG DALE KNOCKOUT 134U #

MONTEREY LUCKY L150 #

YOUNG DALE ERICA 26N #

MONTEREY SERENE D128 #

Sire: YOUNG DALE XCALIBER 32X PV

Dam: DSK L150 GISELLE P119 #

S A V 004 DENSITY 4336 SV

REMITALL H RACHIS 21R#

BROOKMORE TIBBIE 222T #

DSK RR GISELLE F35 #

BROOKMORE TIBBIE 35N #

PALES HU GISELLE X37SV



July 2023

TransTasman Angus
Cattle Evaluation

	CED	CEM	GL	BW	200	400	600	MCW	MILK	SS	DC	CWT	EMA	RIB	RUMP	RBY	IMF	NFI-F
EBV	-3.2	-0.3	-6.1	5.3	52	95	119	126	6	2.1	-4	67	3.9	-1.3	-2.2	0.8	-0.2	0.33
Acc	53%	43%	79%	69%	71%	70%	71%	67%	62%	72%	33%	61%	60%	62%	61%	56%	63%	45%

Traits Observed: GL,200WT,400WT,SC,Scan(EMA,Rib,Rump,IMF),Genomics

LONG YEARLING BULL

The youngest Xcaliber son in the draft.
Shows a great muscle pattern on a very easy
fleshing, square frame.
Injured a shoulder in May and will only be offered
for sale if completely recovered.

Purchaser:.....

Price \$:.....



Lot 51

52

DSK MQ69 TRADIE T48 SV

HBR

Group: 2

Herd Ident: NKS22T48 Genetic Conditions: AMFU,CAFU,DDFU,NHFU

DOB: 22/04/2022 Age (Mths): 15

THOMAS UP RIVER 1614 PV

YOUNG DALE KNOCKOUT 134U #

PRIME UP RIVER N40 SV

YOUNG DALE XCALIBER 32X PV

PRIME ROCKLYN K94 PV

BROOKMORE TIBBIE 222T #

Sire: MONTEREY QUARTERDECK Q69 SV

Dam: DSK YXC POLLYANNA P125 #

DEER VALLEY ALL IN SV

YOUNG DALE CASINO 67M#

MONTEREY DUTCHESS M62 #

YOUNG DALE POLLYANNA 22P #

MONTEREY DUTCHESS K177 #

YOUNG DALE POLLYANNA 18M#



July 2023

TransTasman Angus
Cattle Evaluation

	CED	CEM	GL	BW	200	400	600	MCW	MILK	SS	DC	CWT	EMA	RIB	RUMP	RBY	IMF	NFI-F
EBV	-1.7	3.4	-4	6.6	57	109	144	151	14	1.1	-2.1	81	4.5	-3.7	-3.9	1.2	0.3	-0.52
Acc	49%	38%	65%	65%	68%	65%	66%	63%	56%	69%	28%	55%	54%	56%	56%	49%	59%	44%

Traits Observed: 200WT,400WT,SC,Scan(EMA,Rib,Rump,IMF),Genomics



LONG YEARLING BULL

The last of the long yearling sons.
Big capacity son of the heifer calving sire,
Quarterdeck out of a full ET sister to Lot 13 and 43.

Purchaser:.....

Price \$:.....

Lot 52

53

DSK GE SENATOR S30 SV

HBR

Group: 1

Herd Ident: NKS21S30 Genetic Conditions: AMFU,CAFU,DDFU,NHFU

DOB: 17/07/2021 Age (Mths): 24

SYDGEN EXCEED 3223 PV
 SYDGEN ENHANCE SV
 SYDGEN RITA 2618 PV

CONNEALY EARNAN 076E PV
 TEXAS EARNAN L612 PV
 TEXAS UNDINE H638 PV

Sire: GLENMORGAN ENHANCE MAN Q367 SV

Dam: DSK TEL MILDRED Q4 #

AYRVALE BARTEL E7 PV
 GLENMORGAN BARTEL LADY L111 #
 GLENMORGAN BERKLEY LADY J147 #

GILMANDYKE DARBY D0107SV
 DSK GDK MILDRED G36 #
 DSK P.N.P. MILDRED E41#



July 2023

TransTasman Angus
Cattle Evaluation

	CED	CEM	GL	BW	200	400	600	MCW	MILK	SS	DC	CWT	EMA	RIB	RUMP	RBY	IMF	NFI-F
EBV	-0.6	1	-5.3	5.7	62	114	151	142	15	6.5	-5.1	79	4.9	-1.8	-2.8	0.3	2.5	0.2
Acc	53%	43%	67%	67%	69%	67%	69%	65%	57%	69%	32%	57%	56%	58%	58%	51%	61%	47%

Traits Observed: CE,200WT,400WT,600WT,SC,Scan(EMA,Rib,Rump,IMF),Genomics

A heifer's first calf born unassisted.

A larger framed Enhance Man son from a sound and productive female line with loads of maternal strength.

Purchaser:.....

Price \$:.....



Lot 54

54

DSK GJB SURE FIRE S145 PV

HBR

Group: 1

Herd Ident: NKS21S145 Genetic Conditions: AMFU,CAFU,DDFU,NHFU

DOB: 21/10/2021 Age (Mths): 21

REMITALL H RACHIS 21R #
 DSK RR JIMBOB J21 SV
 DSK GDK MILDRED G36 #

MERRIDALE PACK-N-POWER A46 PV
 DSK PNP D150 SV
 PALES U72 ERINETTE X52 #

Sire: GLENISA JIMBOB P203 SV

Dam: DSK D150 DANDALOO H89 SV

DULVERTON CRACKER C056 SV
 GLENISA C56 JANIE E173 #
 GLENISA Z40 JANIE B114 #

DSK V6 YARDARM Y27PV
 DSK YA DANDALOO B73 #
 DSK DR DANDLOO Z88#



July 2023

TransTasman Angus
Cattle Evaluation

	CED	CEM	GL	BW	200	400	600	MCW	MILK	SS	DC	CWT	EMA	RIB	RUMP	RBY	IMF	NFI-F
EBV	-10.3	-6.6	0.9	5.8	48	95	128	115	18	1.3	-2.8	80	1.4	0.4	1.2	-0.2	1.7	0.21
Acc	49%	38%	66%	68%	69%	68%	71%	63%	57%	71%	29%	56%	54%	57%	57%	50%	59%	44%

Traits Observed: CE,200WT,400WT,600WT,SC,Scan(EMA,Rib,Rump,IMF),Genomics

A son of one of our older matrons who is still in production. A large and long frame in the dam is showing through in this young bull who is by the moderator sire, Jimbob.

Purchaser:.....

Price \$:.....

55

DSK PEP SOLO S142 SV

HBR

Group: 1

Herd Ident: NKS21S142 Genetic Conditions: AMFU,CAFU,DDFU,NHFU

DOB: 18/10/2021 Age (Mths): 21

CONNEALY EARNAN 076E PV
 TEXAS EARNAN L612 PV
 TEXAS UNDINE H638 PV

MERRIDALE PACK-N-POWER A46 PV
 DSK BN GEORGE G2 SV
 DSK HU PANDA W9 #

Sire: DSK TEL PEP P48 SV

Dam: DSK G2 DANDALOO J64 #

DBRL 03M TITAN 4T #
 DSK TTN LADY HEATHER K40 #
 COLDSTREAM LADY HEATHER 92S #

GARDENS HIGHMARK#
 DSK GHM DANDALOO C78 #
 DSK HR DANDLOO V67#



July 2023

TransTasman Angus
Cattle Evaluation

	CED	CEM	GL	BW	200	400	600	MCW	MILK	SS	DC	CWT	EMA	RIB	RUMP	RBY	IMF	NFI-F
EBV	-12.3	-6.2	0.8	6.9	49	93	119	124	11	3.2	-2.9	69	4.4	-3.8	-3.5	1	1.3	0.12
Acc	51%	39%	65%	68%	70%	69%	71%	64%	57%	72%	32%	57%	56%	58%	58%	51%	60%	45%

Traits Observed: CE,200WT,400WT,600WT,SC,Scan(EMA,Rib,Rump,IMF),Genomics

Similar to the last lot, this young bull is out of one of our larger framed females, by the big strong sire, Pep. S142 will continue to stretch out and grow as he matures. Good clean made young bull with great skin and hair.

Purchaser:.....

Price \$:.....



**JSRL Quick Fix Q29. Stud sire at
JSRL and Flemington Angus Studs
Full pedigree sibling to Lot 5**



**Coldstream Blackbird 73Y
One of our first Canadian Donor Dams**



**G A R Inertia
Sire of Lot's 2,23 & 44**



**DSK TEL Lady Heather R73
Sold for \$27k and sister to Lot 35**



**DSK Pine Drive P106
Sire of Lot 15**



**LLB Rosebud Lass 87W
Fully Canadian bred donor at DSK.**



**Glenisa Jimbob P203
Sire of Lot's 42,46 & 54**



**Fleury Bonnie 20W
Fully Canadian bred donor cow at DSK**

UNDERSTANDING THE TRANSTASMAN ANGUS CATTLE EVALUATION (TACE)



What is the TransTasman Angus Cattle Evaluation?

The TransTasman Angus Cattle Evaluation is the genetic evaluation program adopted by Angus Australia for Angus and Angus influenced beef cattle. The TransTasman Angus Cattle Evaluation uses Best Linear Unbiased Prediction (BLUP) technology to produce Estimated Breeding Values (EBVs) of recorded cattle for a range of important production traits (e.g. weight, carcase, fertility).

The TransTasman Angus Cattle Evaluation is an international genetic evaluation and includes pedigree, performance and genomic information from the Angus Australia and Angus New Zealand databases, along with selected information from the American and Canadian Angus Associations.

The TransTasman Angus Cattle Evaluation utilises a range of genetic evaluation software, including the internationally recognised BLUPF90 family of programs, and BREEDPLAN® beef genetic evaluation analytical software, as developed by the Animal Genetics and Breeding Unit (AGBU), a joint institute of NSW Agriculture and the University of New England, and Meat and Livestock Australia Limited (MLA).

What is an EBV?

An animal's breeding value can be defined as its genetic merit for each trait. While it is not possible to determine an animal's true breeding value, it is possible to estimate it. These estimates of an animal's true breeding value are called EBVs (Estimated Breeding Values).

EBVs are expressed as the difference between an individual animal's genetics and a historical genetic level (i.e. group of animals) within the TACE genetic evaluation, and are reported in the units in which the measurements are taken.

Using EBVs to Compare the Genetics of Two Animals

TACE EBVs can be used to estimate the expected difference in the genetics of two animals, with the expected difference equating to half the difference in the EBVs of the animals, all other things being equal (e.g. they are joined to the same animal/s).

For example, a bull with a 200 Day Growth EBV of +60 would be expected to produce progeny that are, on average, 10 kg heavier at 200 days of age than a bull with a 200 Day Growth EBV of +40 kg (i.e. 20 kg difference between the sire's EBVs, then halved as the sire only contributes half the genetics).

Or similarly, a bull with an IMF EBV of +3.0 would be expected to produce progeny with on average, 1% more intramuscular fat in a 400 kg carcase than a bull with a IMF EBV of +1.0 (i.e. 2% difference between the sire's EBVs, then halved as the sire only contributes half the genetics).

Using EBVs to Benchmark an Animal's Genetics with the Breed

EBVs can also be used to benchmark an animal's genetics relative to the genetics of other Angus or Angus infused animals recorded with Angus Australia.

To benchmark an animal's genetics relative to other Angus animals, an animal's EBV can be compared to the EBV reference tables, which provide:

- the breed average EBV
- the percentile bands table

The current breed average EBV is listed on the bottom of each page in this publication, while the current EBV reference tables are included at the end of these introductory notes. For easy reference, the percentile band in which an animal's EBV ranks is also published in association with the EBV.

Considering Accuracy

An accuracy value is published with each EBV, and is usually displayed as a percentage value immediately below the EBV.

The accuracy value provides an indication of the reliability of the EBV in estimating the animal's genetics (or true breeding value), and is an indication of the amount of information that has been used in the calculation of the EBV.

EBVs with accuracy values below 50% should be considered as preliminary or of low accuracy, 50-74% as of medium accuracy, 75-90% of medium to high accuracy, and 90% or greater as high accuracy.

Description of TACE EBVs

EBVs are calculated for a range of traits within TACE, covering calving ease, growth, fertility, maternal performance, carcase merit, feed efficiency and structural soundness. A description of each EBV included in this publication is provided on the following page.

TransTasman Angus Cattle Evaluation - July 2023 Reference Tables

BREED AVERAGE EBVs

Calving Ease CEDir CEDtrs	Birth		Growth				Fertility			Carcass			Other			Structure			Selection Indexes					
	GL	BW	200	400	600	MCW	Milk	SS	DTC	CWT	EMA	RIB	P8	RBV	IMF	NFI-F	DOC	Claw	Angle	Leg	\$A	\$A-L		
Brd Avg	+2.2	+2.6	-4.8	+4.1	+50	+90	+117	+100	+17	+2.1	-4.6	+66	+6.3	+0.0	-0.3	+0.5	+2.2	+0.19	+20	+0.84	+0.97	+1.03	+197	+339

* Breed average represents the average EBV of all 2021 drop Australian Angus and Angus-influenced seedstock animals analysed in the July 2023 TransTasman Angus Cattle Evaluation .

PERCENTILE BANDS TABLE

% Band	Calving Ease		Birth		Growth				Fertility			Carcass			Other			Structure				Selection Indexes	
	Less Diffculty	More Diffculty	Less Diffculty	Longer Calving	Lighter Live Weight	Lighter Live Weight	Lighter Live Weight	Lighter Live Weight	Lighter Live Weight	Lighter Live Weight	Lighter Live Weight	Lighter Live Weight	Lighter Live Weight	Lighter Live Weight	Lighter Live Weight	Lighter Live Weight	Lighter Live Weight	Lighter Live Weight	Lighter Live Weight	Lighter Live Weight	Lighter Live Weight	Lighter Live Weight	Lighter Live Weight
1%	+10.9	+9.9	-10.7	-0.4	+70	+123	+162	+160	+28	+4.8	-8.0	+98	+4.2	+5.0	+2.0	+5.8	-0.53	+44	+0.42	+0.60	+0.74	+273	+449
5%	+9.1	+8.3	-8.8	+1.0	+64	+112	+148	+140	+25	+3.9	-7.0	+88	+2.8	+3.3	+1.5	+4.6	-0.32	+36	+0.54	+0.70	+0.84	+253	+419
10%	+7.9	+7.3	-7.9	+1.7	+60	+107	+140	+130	+23	+3.5	-6.5	+83	+2.2	+2.5	+1.3	+4.0	-0.20	+32	+0.60	+0.76	+0.88	+241	+403
15%	+7.0	+6.5	-7.2	+2.2	+58	+104	+136	+124	+22	+3.2	-6.2	+79	+1.7	+1.9	+1.1	+3.6	-0.17	+29	+0.66	+0.80	+0.90	+234	+392
20%	+6.3	+5.9	-6.8	+2.6	+57	+101	+132	+119	+21	+3.0	-5.9	+77	+1.3	+1.5	+1.0	+3.3	-0.07	+27	+0.68	+0.84	+0.94	+228	+383
25%	+5.7	+5.4	-6.4	+2.9	+55	+99	+129	+115	+20	+2.8	-5.6	+75	+1.1	+1.1	+0.9	+3.1	-0.02	+25	+0.72	+0.86	+0.94	+222	+376
30%	+5.1	+4.9	-6.0	+3.1	+54	+97	+126	+112	+19	+2.6	-5.4	+73	+0.8	+0.8	+0.8	+2.9	+0.03	+24	+0.74	+0.88	+0.96	+218	+369
35%	+4.5	+4.4	-5.7	+3.4	+53	+95	+124	+108	+19	+2.5	-5.2	+71	+0.6	+0.5	+0.7	+2.6	+0.07	+23	+0.76	+0.90	+0.98	+213	+363
40%	+4.0	+4.0	-5.4	+3.6	+52	+94	+121	+105	+18	+2.3	-5.0	+69	+0.3	+0.2	+0.6	+2.5	+0.11	+22	+0.80	+0.92	+1.00	+209	+357
45%	+3.4	+3.5	-5.1	+3.8	+51	+92	+119	+102	+18	+2.2	-4.9	+68	+0.1	+0.0	+0.6	+2.3	+0.14	+20	+0.82	+0.94	+1.02	+204	+350
50%	+2.8	+3.0	-4.8	+4.0	+50	+90	+117	+100	+17	+2.1	-4.7	+66	-0.1	-0.3	+0.5	+2.1	+0.18	+19	+0.84	+0.96	+1.02	+200	+344
55%	+2.3	+2.6	-4.5	+4.3	+49	+89	+115	+97	+16	+2.0	-4.5	+64	-0.3	-0.6	+0.4	+1.9	+0.22	+19	+0.86	+0.98	+1.04	+196	+338
60%	+1.6	+2.1	-4.2	+4.5	+48	+87	+112	+94	+16	+1.8	-4.3	+63	-0.5	-0.8	+0.3	+1.8	+0.25	+18	+0.88	+1.00	+1.06	+191	+332
65%	+1.0	+1.5	-3.9	+4.7	+47	+85	+110	+91	+15	+1.7	-4.2	+61	-0.7	-1.1	+0.3	+1.6	+0.29	+17	+0.90	+1.02	+1.08	+186	+324
70%	+0.3	+1.0	-3.5	+4.9	+46	+83	+107	+88	+15	+1.6	-4.0	+59	-0.9	-1.4	+0.2	+1.4	+0.34	+16	+0.94	+1.04	+1.08	+181	+317
75%	-0.6	+0.4	-3.2	+5.2	+44	+81	+105	+84	+14	+1.4	-3.8	+57	-1.2	-1.7	+0.1	+1.2	+0.38	+15	+0.96	+1.08	+1.10	+175	+308
80%	-1.5	-0.4	-2.8	+5.5	+43	+79	+102	+80	+13	+1.3	-3.5	+55	-1.4	-2.1	+0.0	+1.0	+0.44	+14	+1.00	+1.10	+1.12	+168	+298
85%	-2.7	-1.3	-2.3	+5.9	+41	+76	+98	+76	+12	+1.1	-3.2	+53	-1.8	-2.5	-0.2	+0.8	+0.50	+12	+1.04	+1.14	+1.16	+159	+285
90%	-4.3	-2.5	-1.6	+6.3	+39	+73	+93	+70	+11	+0.8	-2.8	+49	-2.2	-3.1	-0.3	+0.5	+0.58	+10	+1.08	+1.18	+1.18	+147	+267
95%	-6.9	-4.4	-0.7	+7.0	+36	+68	+86	+60	+10	+0.5	-2.0	+44	-2.8	-3.9	-0.6	+0.0	+0.71	+7	+1.16	+1.24	+1.24	+129	+239
99%	-12.7	-8.4	+1.3	+8.5	+29	+57	+71	+41	+6	-0.4	-0.2	+34	-4.2	-5.6	-1.1	-0.8	+0.96	+0	+1.30	+1.38	+1.34	+95	+186
	More Diffculty	Less Diffculty	Longer Calving	Heavier Birth	Lighter Live Weight	Lighter Live Weight	Lighter Live Weight	Lighter Live Weight	Lighter Live Weight	Smaller Scrotal Size	Longer Time to Calving	Lighter Carcass Weight	Less Fat	Less Fat	Lower Yield	Less IMF	Lower Feed Efficiency	Less Docile	Higher Score	Higher Score	Higher Score	Lower Profitability	Lower Profitability

* The percentile bands represent the distribution of EBVs across the 2021 drop Australian Angus and Angus-influenced seedstock animals analysed in the July 2023 TransTasman Angus Cattle Evaluation .

UNDERSTANDING ESTIMATED BREEDING VALUES (EBVS)

Calving Ease	CEDir	%	Genetic differences in the ability of a sire's calves to be born unassisted from 2 year old heifers.	Higher EBVs indicate fewer calving difficulties in 2 year old heifers.
	CEDtrs	%	Genetic differences in the ability of a sire's daughters to calve unassisted at 2 years of age.	Higher EBVs indicate fewer calving difficulties in 2 year old heifers.
	GL	days	Genetic differences between animals in the length of time from the date of conception to the birth of the calf.	Lower EBVs indicate shorter gestation length.
	BW	kg	Genetic differences between animals in calf weight at birth.	Lower EBVs indicate lighter birth weight.
Growth	200 Day	kg	Genetic differences between animals in live weight at 200 days of age due to genetics for growth.	Higher EBVs indicate heavier live weight.
	400 Day	kg	Genetic differences between animals in live weight at 400 days of age.	Higher EBVs indicate heavier live weight.
	600 Day	kg	Genetic differences between animals in live weight at 600 days of age.	Higher EBVs indicate heavier live weight.
	MCW	kg	Genetic differences between animals in live weight of cows at 5 years of age.	Higher EBVs indicate heavier mature weight.
	Milk	kg	Genetic differences between animals in live weight at 200 days of age due to the maternal contribution of its dam.	Higher EBVs indicate heavier live weight.
Fertility	DtC	days	Genetic differences between animals in the time from the start of the joining period (i.e. when the female is introduced to a bull) until subsequent calving.	Lower EBVs indicate shorter time to calving.
	SS	cm	Genetic differences between animals in scrotal circumference at 400 days of age.	Higher EBVs indicate larger scrotal circumference.
Carcase	CWT	kg	Genetic differences between animals in hot standard carcase weight at 750 days of age.	Higher EBVs indicate heavier carcase weight.
	EMA	cm ²	Genetic differences between animals in eye muscle area at the 12/13th rib site in a 400 kg carcase.	Higher EBVs indicate larger eye muscle area.
	Rib Fat	mm	Genetic differences between animals in fat depth at the 12/13th rib site in a 400 kg carcase.	Higher EBVs indicate more fat.
	P8 Fat	mm	Genetic differences between animals in fat depth at the P8 rump site in a 400 kg carcase.	Higher EBVs indicate more fat.
	RBY	%	Genetic differences between animals in boned out saleable meat from a 400 kg carcase.	Higher EBVs indicate higher yield.
	IMF	%	Genetic differences between animals in intramuscular fat (marbling) at the 12/13th rib site in a 400 kg carcase.	Higher EBVs indicate more intramuscular fat.
Feed/Temp.	NFI-F	kg/day	Genetic differences between animals in feed intake at a standard weight and rate of weight gain when animals are in a feedlot finishing phase.	Lower EBVs indicate more feed efficiency.
	Doc	%	Genetic differences between animals in temperament.	Higher EBVs indicate better temperament.

DISCLAIMER AND PRIVACY INFORMATION



Attention Buyer

Animal details included in this catalogue, including but not limited to pedigree, DNA information, Estimated Breeding Values (EBVs) and Index values, are based on information provided by the breeder or owner of the animal. Whilst all reasonable care has been taken to ensure that the information provided in this catalogue was correct at the time of publication, Angus Australia will assume no responsibility for the accuracy or completeness of the information, nor for the outcome (including consequential loss) of any action taken based on this information.

Parent Verification Suffixes

The animals listed within this catalogue including its pedigree, are displaying a Parent Verification Suffix which indicates the DNA parent verification status that has been conducted on the animal. The Parent Verification Suffixes that will appear at the end of each animal's name.

The suffix displayed at the end of each animal's name indicates the DNA parentage verification that has been conducted by Angus Australia.

PV : both parents have been verified by DNA.

SV : the sire has been verified by DNA.

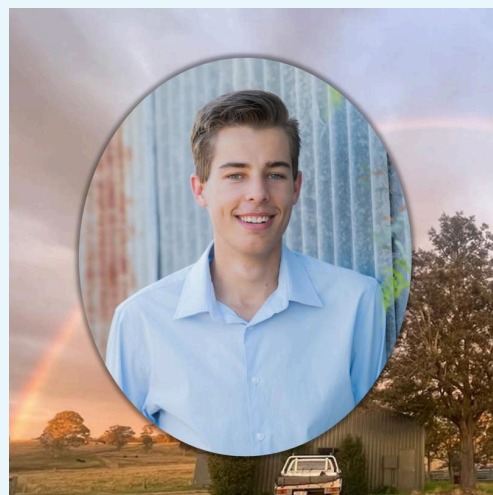
DV : the dam has been verified by DNA.

: DNA verification has not been conducted.

E : DNA verification has identified that the sire and/or dam may possibly be incorrect, but this cannot be confirmed conclusively.



George Robert Alexander
left us peacefully on
10th Aug 2022 at the age of 24 yrs.
Your battle with Cystic Fibrosis was
insurmountable but you never gave
up. The man you became is someone
that everyone should look to be. Kind,
caring, gentle. A truly beautiful human.
The cheeky kid on the left is how I will
always remember you though.
Grateful to have had you as a nephew.
Bless your soul.



Words fail me.
This past 12 months has
been a hard one to handle.
Mum.
Love you forever.
Passed away
27th April '23.
A very full and
love filled 91 yrs.
Keep on gardening.



Sid Dart
(forefront on the right).
Lost to us 6 years ago.
Still miss you.
A fixture on the sale BBQ
almost every year. Pictured
here with long time great
friend Geoff Gasior.
You have some very precious
souls to have a yarn to now.
Look after them please.



Lola Robson. 76 years young
Passed away 24th June 2023
Loved mother, mother-in-law
and grandmother to
Ian, Donna, Jack and Sam Robson



Our old 120+ year old homestead finally met it's match with a vicious storm in December 2022. It
has since been patched up temporarily but it's future is in doubt. Now it just needs to hold out until
we move up the very loooong waiting list for a replacement home.



The working boys (a very loose term here) 😊



Dear, dear Canadian friends (family) that we miss so much.



The 2023 boys have seen it all. Corn silage pitted, Jan 2020. Unearthed March 2023.



Notes:

Angus Lots:

Bulls Sold:

Top Price:

Sale Average:

Chris and Helen would like to extend a sincere thanks to all our valued return clients,
new buyers and underbidders for your support.

We wish you well with your purchase.

Please feel free to contact us for advice or any problem you may have with your bulls.

You never know, we may actually be able to solve a problem 😊🐮



DSK WP Panda S82

Woodhill Patent daughter out of a Sitz Upward cow (DSK SUP Panda K17).
Top priced female at the Flemington sale 2023 at \$10,000. March 2023.

DSK PEP Martina S137

DSK TEL Pep P48 daughter.
Sold to JSRL. March 2023
Class winner at Sydney Royal 2023



DSK TEL Hot Stuff S116

“Big Tex” daughter out of
an Xcaliber female.
Sold to JSRL for \$9,000. March 2023
& was Res. Junior Champion Angus
at Sydney Royal 2023

Extra Kg's on the Rail = More \$\$ for you!!



**Breeding Award winning steers and carcasses in all major Carcase Competitions,
Feedlot and Grass Fed Trials across all mainland Australian Eastern States.**

Gold, Silver and Bronze awards with purebred carcasses many years running



BIG TEX STEER OUT OF DSK K42

MARBLE SCORE 8

**AT 11 MTHS AGE AT THE 2020
EKKA CARCASE COMPETITION.
CHAMPION QUALITY &
TASTE CARCASE**

Proven Quality and High Yielding Beef Production

Choose DSK bulls to breed efficiency and profitability into your herd.

DSK Angus and Charolais:

Chris Knox and Helen Alexander

Borah Station, 1220 Borah Creek Road

Rocky Glen NSW 2357

Chris: 0427 600 278 or Helen: 0438 600 278

E: dskangusandcharolais@westnet.com.au

www.dskangusandcharolais.com.au

30th Annual DSK Bull Sale

1pm 21st July 2023

Borah Station Yards

32km West of Mullaley or 34km NE of Coonabarabran
off the Oxley Hwy at Rocky Glen

13km N on Borah Creek Road to Borah Station Yards