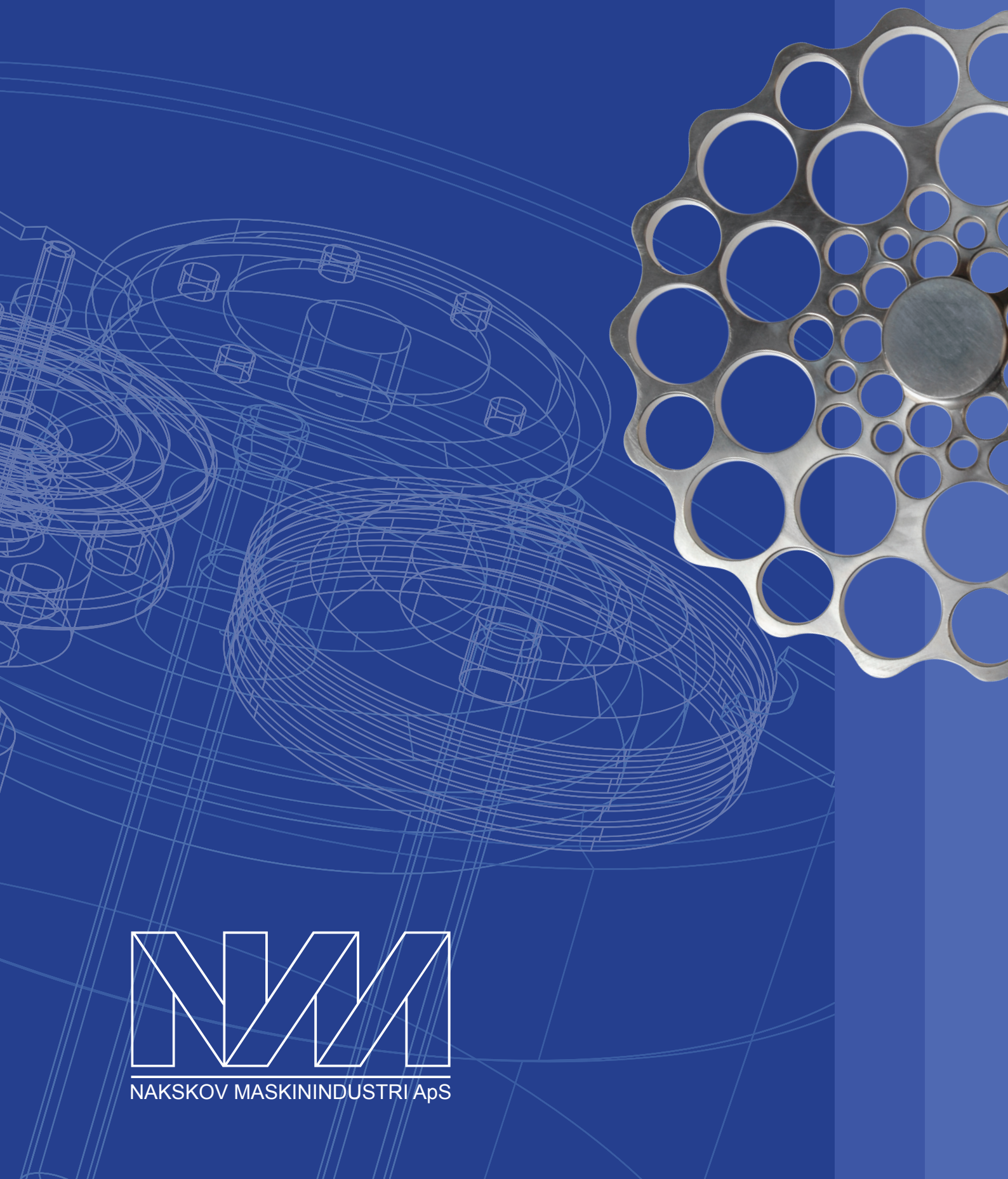


# Nakskov Maskinindustri



NAKSKOV MASKININDUSTRI ApS



## A bit about us

Welcome to Nakskov Maskinindustri. We are a modern company enjoying stability and positive development. We have traditions and values that my father, Tom Poulsen, has nurtured since he established the company in 1985, and as his successor, I intend to continue these.

Our values include day-to-day dialogue with our customers and mutual mentoring between staff members, which feels like a partnership, contributing positively to continuous development of cooperation with our customers.

Our staff of many years' standing have played a prominent role in the history of the company. We have always taken the view that a healthy company is created by its staff. They are the people who have helped to create the company and develop it into

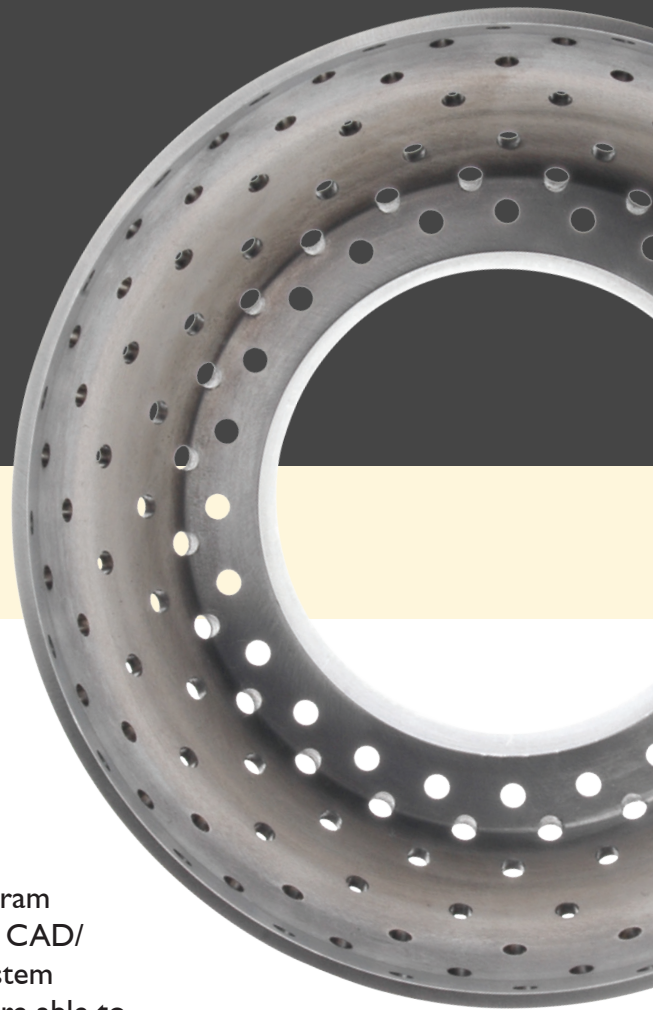
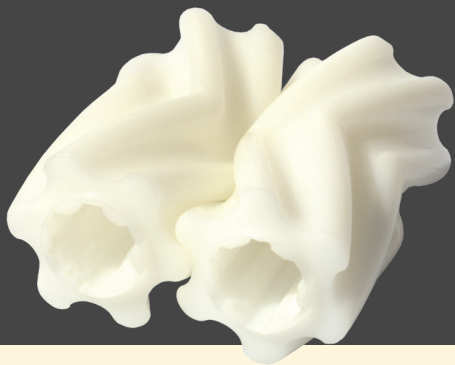
what it is today, with the quality of our completed projects and our reliability in delivering being the hallmarks of Nakskov Maskinindustri.

Heidi Nysted Poulsen, General Manager





# Readiness and flexibility Knowledge High quality Competitiveness



## Our company

Nakskov Maskinindustri places high value on readiness, flexibility, knowledge, quality and competitiveness. That applies equally as a manufacturer, supplier and subcontractor.

We specialise in working with cutting tools, manufacturing individual products and small series – turning, milling and finishing.

Our work involves machining stainless steel, iron, aluminium, plastic, synthetics, copper, brass and other specialist materials.

Nakskov Maskinindustri is registered with the Danish Veterinary and Food Administration and has obtained the statutory registration here, so going forward we are therefore able to supply products destined for contact with foodstuffs.

We program our own CAD/CAM system and we are able to re-stamping materials for TÜV.

The company works in compliance with the guidelines of ISO 9001 and ISO 14001.

We are a turnkey supplier; we undertake project management and a number of fitting tasks. Our products can be delivered direct to the customer as a finished product.

We usually manufacture to order.



## Our customer base

- The foodstuffs and food processing industry
- The pharmaceutical industry
- Medtech
- The wind turbine industry
- Alternative energy and environmental productions
- The construction and civil engineering industry
- The shipping and marine industry
- The automotive industry
- Agribusiness
- Machine manufacturers
- Offshore

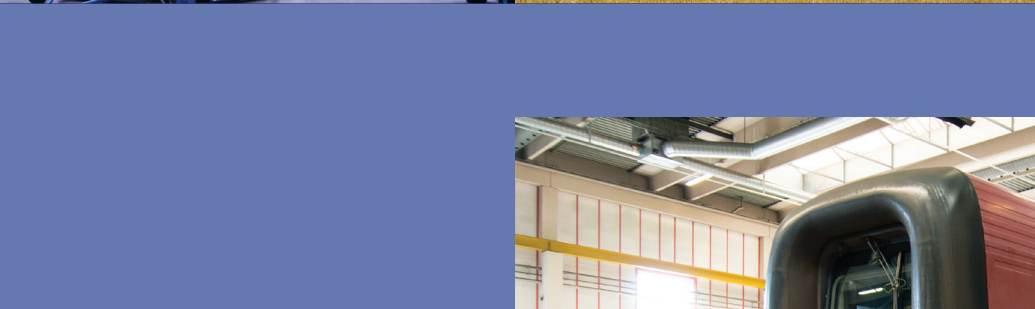




# Developing and cooperating

Nakskov Maskinindustri often develops and cooperates with companies, universities and other research institutions in relation to inventions and prototype models. We are an active business partner to many of our product development customers.

We help to develop the workpieces the customer wants to have designed, manufactured, modified or optimised. We do not want to be just suppliers to our customers – we want to be your business partner – our goal is to create added value for our customers by offering them innovative solutions.





# Our state-of-the-art machinery

Our state-of-the-art machinery is one of the key parameters of our competitiveness. We constantly invest in the most up-to-date and effective machining centres and machinery.

We have gained special expertise in being able to work with individual workpieces with a very high level of precision and know-how. We know how much each individual workpiece is worth to our customer, and how much it means to obtain a good end result. That is why we want to get it right the first time. You can find information about our machinery at [nm-industri.dk](http://nm-industri.dk).









# Our values

## DIALOGUE

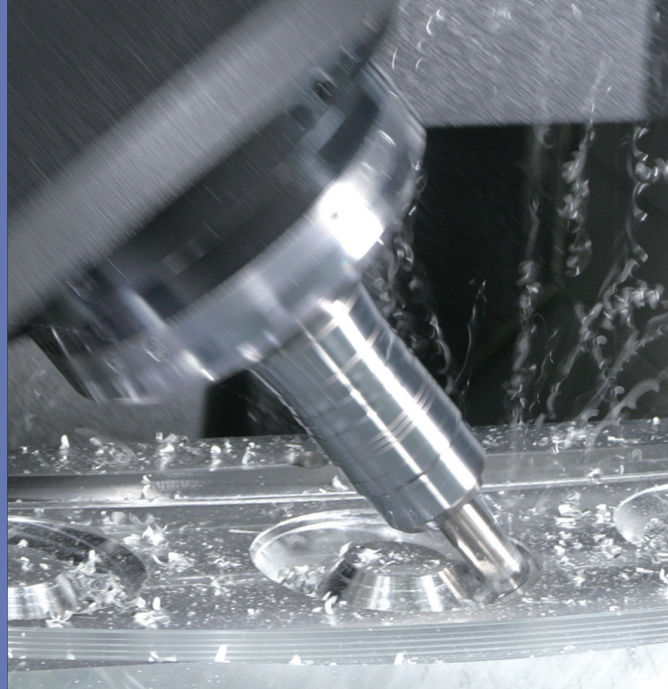
We believe in open, respectful, down-to-earth dialogue in our workplace. We believe good communication is based on the ability to listen, speak and cooperate. We have introduced a high level of employee involvement in our company. This means our employees experience richer content to their everyday working life and feel a greater sense of responsibility with regard to production. This ensures that we deliver to the customer what we have agreed, at the agreed time.

## RELIABILITY

We always show trust and loyalty. Our reliability is based on our ability to listen to what our customers and business partners want.

## DESIGN

Developing and cooperating in close dialogue with the customer. Many years of development in the manufacture of workpieces using various steel and plastic materials has produced extensive knowledge of products, design development of tools and workpieces.





## PROCESS

A significant part of the process involves designing prototypes, manufacturing our own tools, analysing, and adjusting subsequent production, often in close dialogue with the customer.

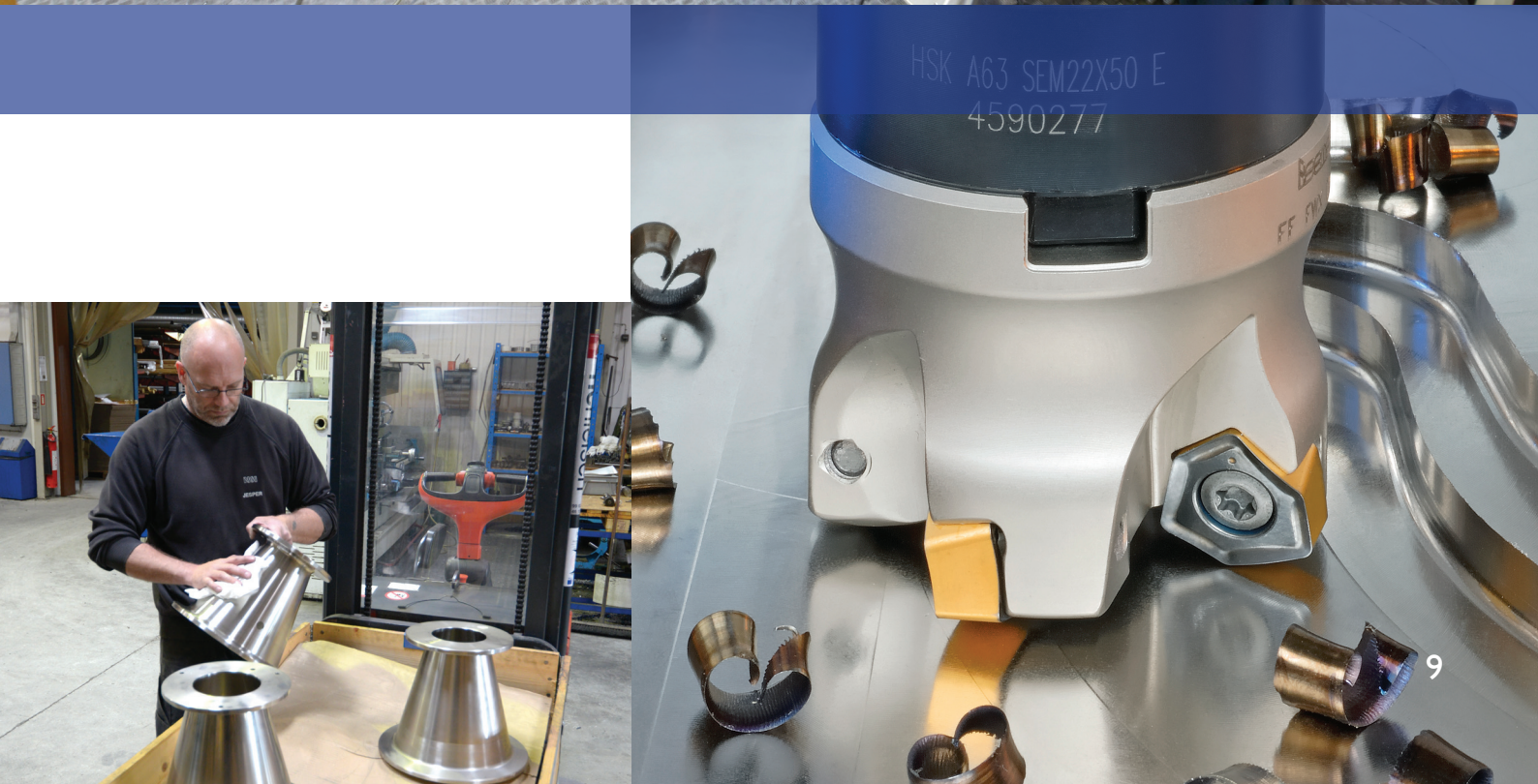
## PRODUCTION

Production methods and quality standards are subject to our internal requirements in order to meet our customers' expectations. Our requirements are also reflected in safety and environmental considerations.

In manufacturing, we work sustainably, focusing on optimisation and improvements with a view to helping ourselves and our customers to be more competitive. We use the latest technologies to ensure the best quality – taking due account of finances and production time.

## CAPACITY

Our know-how is not only centralised – it is also found in our individual employees/operatives who, working independently and using their own expertise and experience, help to determine how best to machine each workpiece to maximise the quality of the end result.







## Turnkey supplier

We often serve as a turnkey supplier, with experience in different types of machining, finishing, grinding, polishing, welding, engraving, marking, surface grinding and machining knots.

We also undertake a number of fitting tasks so that our products can be delivered direct to the customer's assembly lines or as a finished product.

As a supplier or a contractor, we are often involved in mentoring as early as the product development phase; this ensures the best possible outcome.





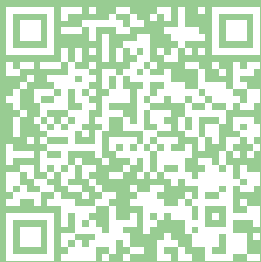
# Our environmental profile

Nakskov Maskinindustri has an environmental policy. Our company is located in a rural area, in a country zone close to fields and woodland. Naturally, we exercise great consideration towards our surroundings and nearest neighbours.

We abide by applicable rules in relation to the environment. We invest constantly in order to minimise negative impact on the environment.

We believe sustainability is a good, long-term growth business. It is based on ongoing dialogue, striking a balance that takes account of budgets, the environment and responsibility while at the same time we manufacture at competitive prices.

## Further details



Profile film





**NMI**  
NAKSKOV MASKININDUSTRI ApS

Ullerslevvej 26  
DK-4900 Nakskov  
Tel. +45 5493 9250 • Fax +45 5493 9647  
[www.nm-industri.dk](http://www.nm-industri.dk) • [info@nm-industri.dk](mailto:info@nm-industri.dk)