

BOYD

NORTH SQUARE AT UPTOWN CELINA

2,252 SQ. FT | 3 BEDROOM | 2.5 BATH | 2-CAR GARAGE



BOYD

ELEVATION A



BOYD

ELEVATION B



FEATURES

- Huge Walk-In Closets
- Generous Storage & Cabinetry
- Upstairs Loft
- Covered Patio
- Bedrooms on the same floor

G35A EFF 6.27.25



469.746.3244

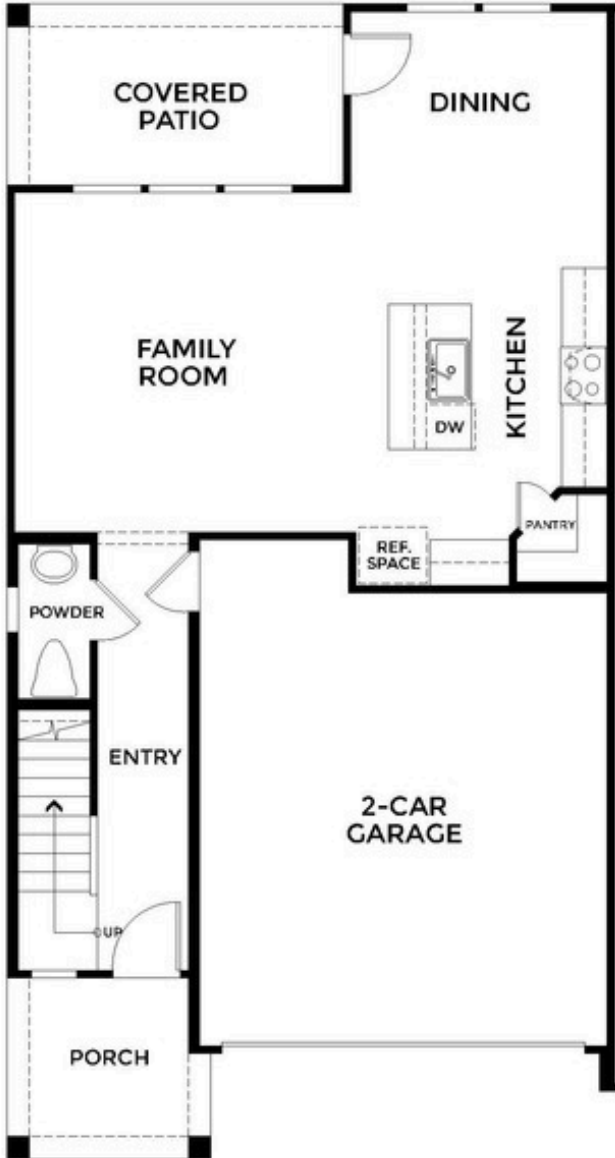
NorthSquare@OliviaClarkeHomes.com



BOYD

NORTH SQUARE AT UPTOWN CELINA

2,252 SQ. FT | 3 BEDROOM | 2.5 BATH | 2-CAR GARAGE



Disclaimer: Prices, plans, specifications, square footage, and availability subject to change without notice or prior obligation. Dimensions and square footage are approximate and may vary upon elevations and/or options selected. Elevation materials may vary per subdivision requirement. Please see your Sales Manager for more information.



469.746.3244

NorthSquare@OliviaClarkeHomes.com

