

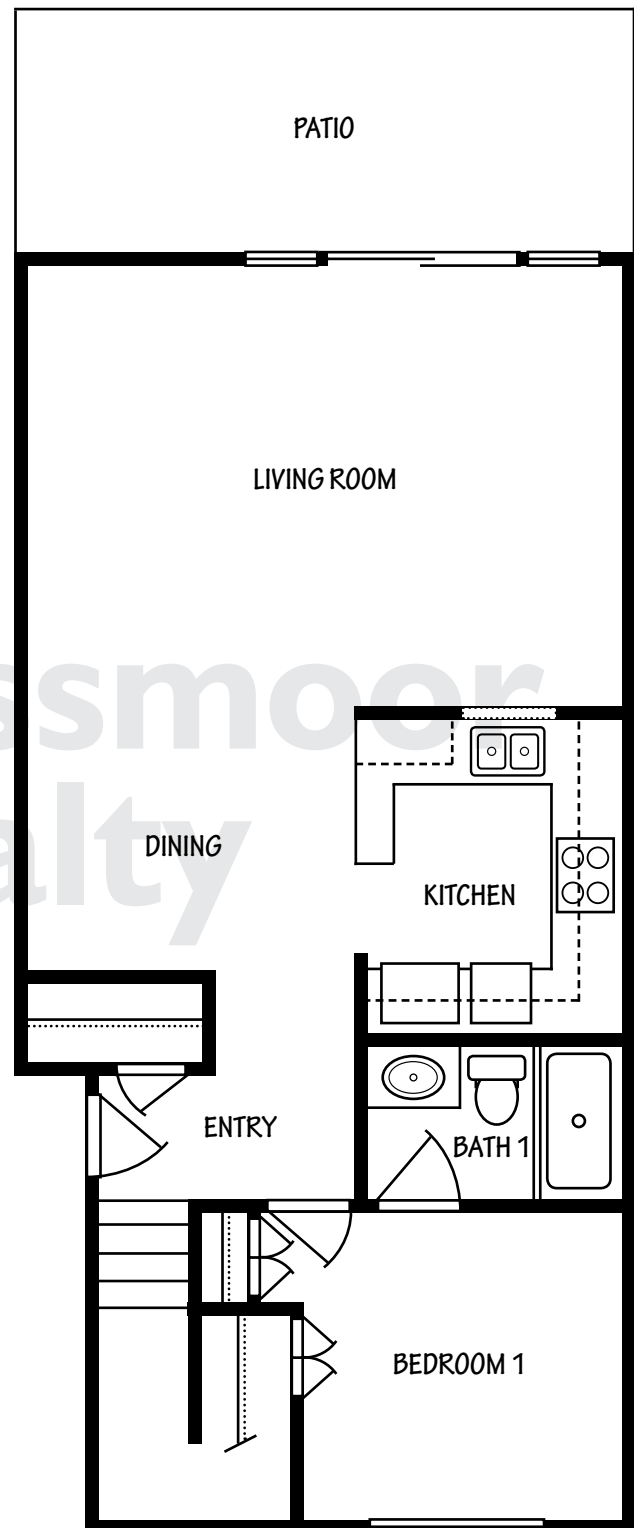
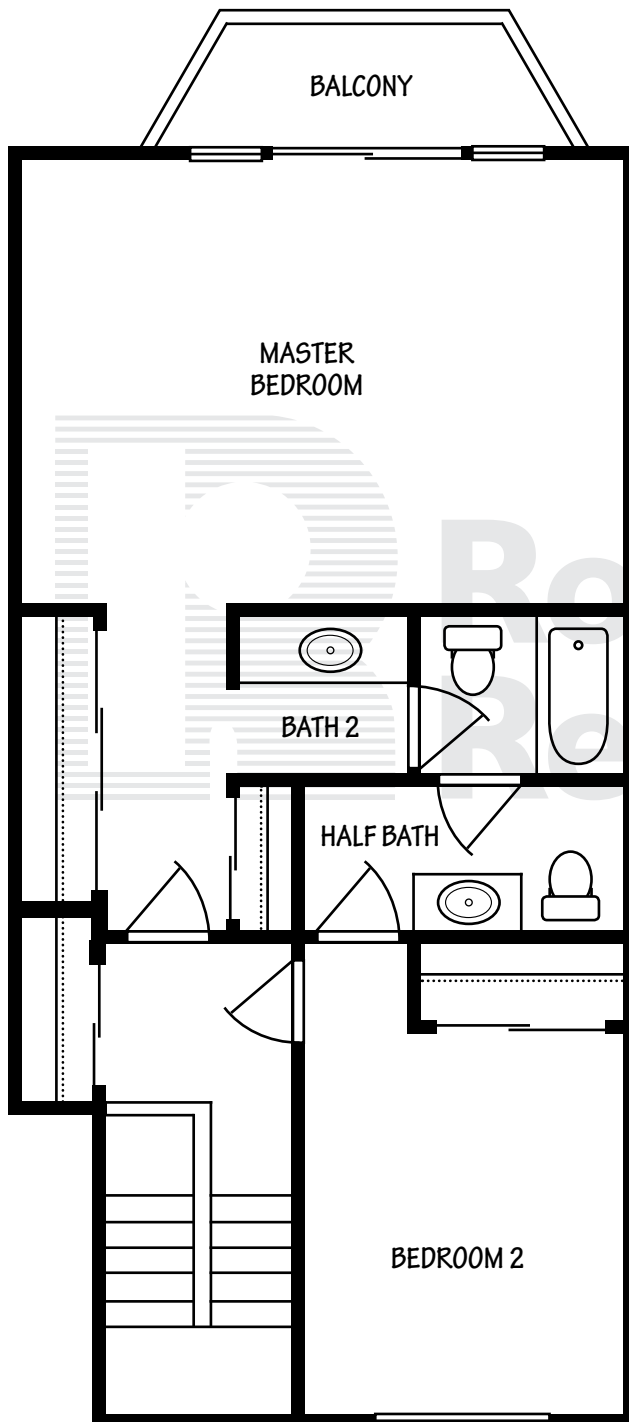
# PIEDMONT TOWNHOUSE

3 BEDROOMS, 2.5 BATHROOMS COOPERATIVE OR CONDOMINIUM

*Approximately 1,673 sq.ft.*

LOWER FLOOR PLAN

UPPER FLOOR PLAN



**Important Disclaimer:** The floor plan shown is for information purposes only, is not to scale and is not intended to be an exact representation of this model. Alterations may have been made by a prior owner.