

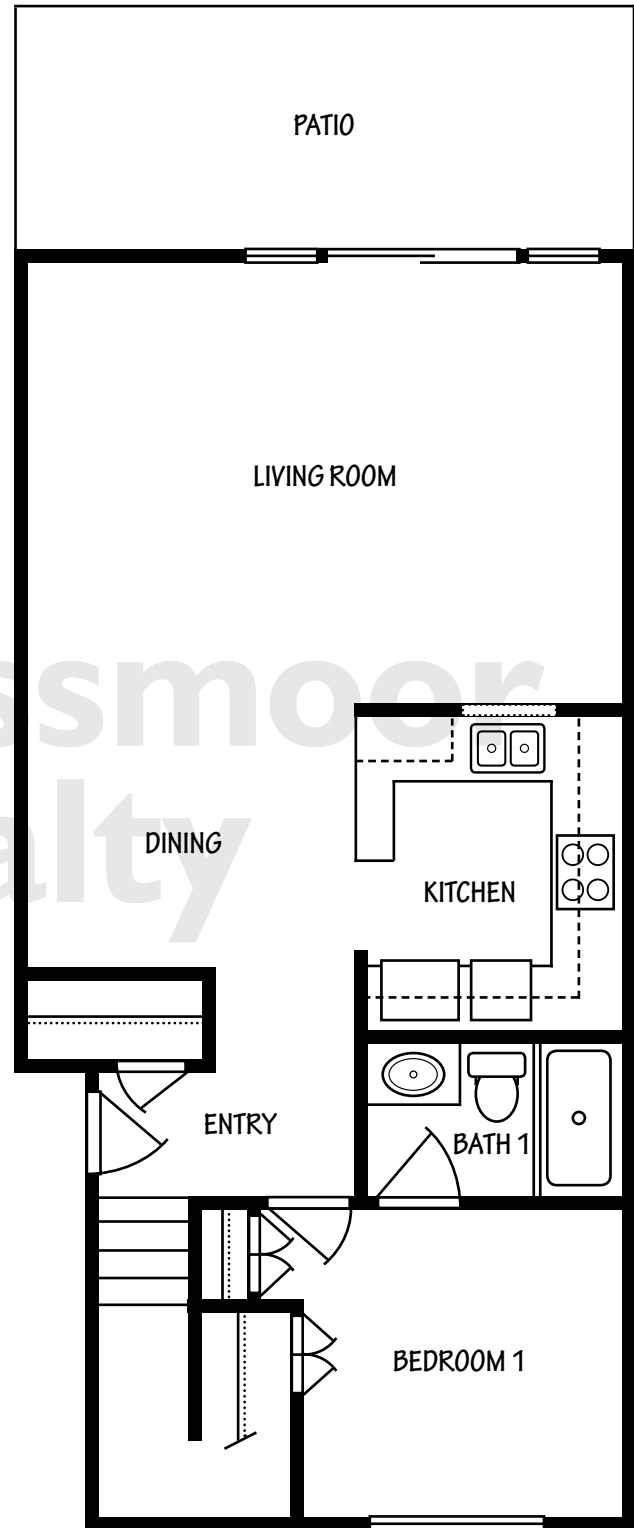
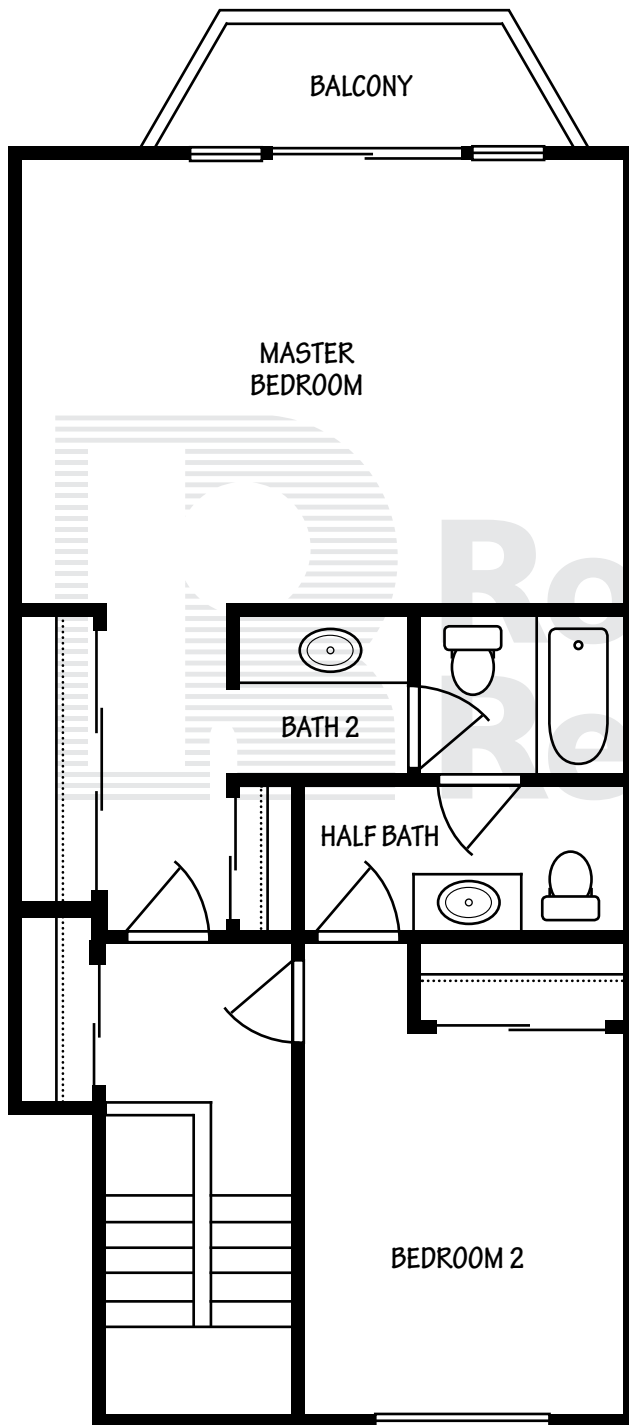
PIEDMONT TOWNHOUSE

3 BEDROOMS, 2.5 BATHROOMS CONDOMINIUM OR COOPERATIVE

Approximately 1,673 sq.ft.

LOWER FLOOR PLAN

UPPER FLOOR PLAN



Important Disclaimer: The floor plan shown is for information purposes only, is not to scale and is not intended to be an exact representation of this model. Alterations may have been made by a prior owner.