

A modern, bright bathroom with a white sink, toilet, and glass shower enclosure. The walls are covered in light-colored marble tiles, and the floor is made of large, light-colored square tiles. The ceiling has recessed lighting. A small potted plant sits on the vanity, and a white towel hangs on a rack in the shower area.

STAY BEAUTIFULLY: A GUIDE TO AGING-IN-PLACE RENOVATIONS

Safe. Stylish. Built to last.

SCHEMPP
Homes

A photograph of a modern living room with a vaulted wooden ceiling. A large, light-colored sofa is in the foreground. In the background, there is a fireplace with a fire, a television mounted on the wall, and a staircase with a wooden railing. The room is bright and airy, with large windows letting in natural light.

SCHEMPH HOMES

AGING IN PLACE IS THE NEW SMART LUXURY

**Home is more than where we live. It is
where we feel most ourselves.**

Aging in place means choosing to grow older with grace, comfort, and dignity in a space filled with your memories. It is not just about avoiding stairs or adding grab bars. It is about shaping a home that continues to reflect your lifestyle in a way that is both beautiful and safe. At Schempp Homes, we believe your forever home should support you and grow with you.

SCHEMPP HOMES

DESIGN PRINCIPLES



BARRIER-FREE FLOW

A well-designed home should feel easy to move through, regardless of age or mobility. By widening doorways, smoothing out floor transitions, and eliminating steps or thresholds, we create spaces that are not only safer but more open and inviting. These subtle changes support accessibility without changing the character of the home — they simply make it more comfortable to live in, now and for years to come.



LAYERED, SMART LIGHTING

Great lighting is foundational to both comfort and design. By layering ambient, task, and accent lighting, we create spaces that feel warm, balanced, and easy to navigate. Smart controls — from dimmers to motion sensors — add flexibility and convenience without disrupting the aesthetic. It's a detail that quietly elevates the entire home.



ACCESSIBLE, EFFORTLESS TOUCHPOINTS

The elements we use every day should be both functional and beautifully integrated. Lever-style handles, soft-close drawers, and pull-out organizers at waist height reduce strain while keeping essentials within easy reach. Thoughtfully designed cabinetry with full-extension drawers or open shelving adds accessibility without compromising the aesthetic. These subtle details enhance everyday living in ways that feel natural and intuitive.

DESIGN-FORWARD SOLUTIONS THAT SUPPORT YOU FOR LIFE

These thoughtful upgrades are designed to improve comfort, accessibility, and safety without sacrificing design. Each one offers long-term value while maintaining the clean, elevated look of a modern home.

CURBLESS WALK-IN SHOWER

\$6,700 - \$14,000+

A sleek, barrier-free shower not only eliminates tripping hazards but also brings a modern, spa-like feel to the bathroom. It's one of the most impactful upgrades for long-term accessibility and everyday comfort.

EFFICIENT KITCHEN

\$55,000 - \$100,000+

Pull-out shelves and drawers in lower cabinets make everyday items easier to access without bending or reaching, blending convenience with custom design.

SMART HOME CONTROLS

\$5,000 - \$25,000+

Voice-activated lighting, hands-free faucets, and automated blinds add convenience while reducing the need for physical effort. These systems blend seamlessly into the home and can be customized to suit your daily routines.

WIDER DOORWAYS

\$500 - \$5,000+

Expanding door openings to 34–36 inches allows for easier movement throughout the home, whether using a walker, wheelchair, or just carrying groceries. It improves accessibility without changing the overall layout or character of the space.

INTEGRATED SEATING AND NICHES

\$750 - \$2,500+

Built-in benches and recessed niches add comfort and convenience without disrupting the design. Whether in a shower or along a hallway, these features offer subtle support while enhancing the home's overall flow and functionality.

OUR RENOVATION PROCESS

01 DISCOVERY CONSULTATION

We start by getting to know you, your home, and your goals. Whether you're looking to future-proof a space or solve a current accessibility challenge, this first conversation helps us understand how to tailor the design to your lifestyle. We'll walk through your needs, inspiration, and priorities, and lay the groundwork for a plan that's both functional and beautiful.

DESIGN + PLANNING

Once we understand your goals, we move into thoughtful planning. This includes layout refinements, product selections, and reviewing accessibility needs. We provide a detailed estimate and a complimentary 3D rendering so you can visualize the space before construction begins. Every element is considered — from tile textures to drawer placement — to ensure the finished space works beautifully for you now and into the future.

02



OUR RENOVATION PROCESS

03 BUILD PHASE

With plans finalized and materials selected, our in-house team gets to work. We take care to protect your home throughout the process, using dust control measures and keeping a clean, organized site. Our project manager ensures every detail is executed to the highest standard while keeping you informed along the way. The result is a smooth experience with craftsmanship you can count on.

FINAL WALKTROUGH 04

Before we consider the project complete, we'll take time to walk through the space with you in detail. We'll review the work, demonstrate how everything functions, and address any last finishing touches. This is also our chance to make sure you're fully comfortable and satisfied with every element of the renovation. Once you're happy, we leave the space spotless and ready to enjoy — exactly as it should be.



SCHEMPP HOMES

SEE THE DIFFERENCE

CURBLESS SHOWERS

"Barrier-free, not beauty-free"



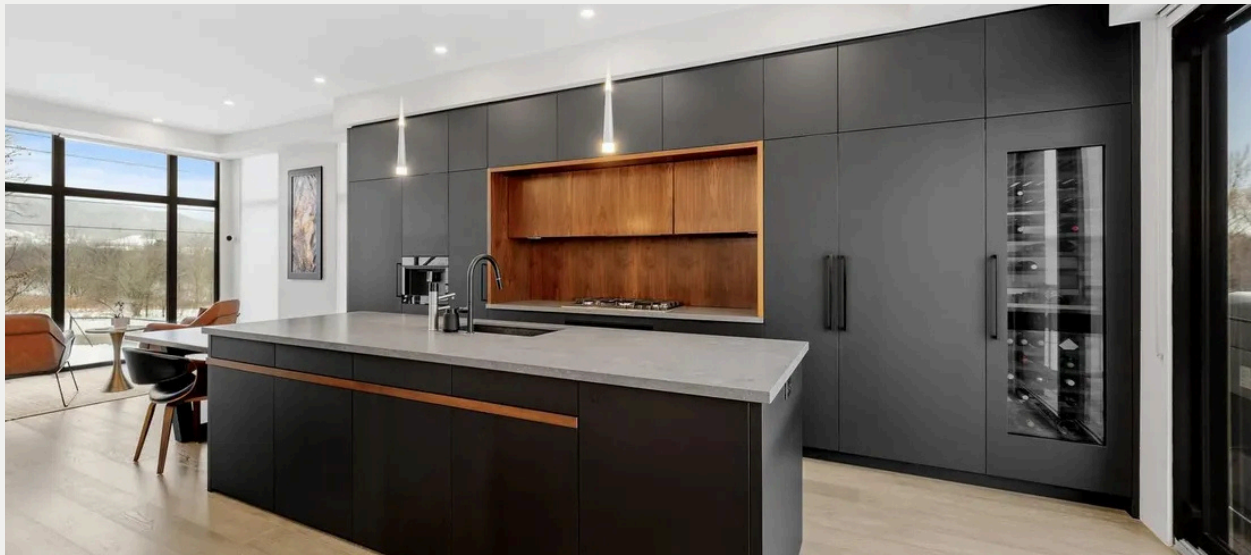


SCHEMPP HOMES

SEE THE DIFFERENCE

EFFICIENT KITCHENS

"Clean lines. Smart storage. Effortless flow."

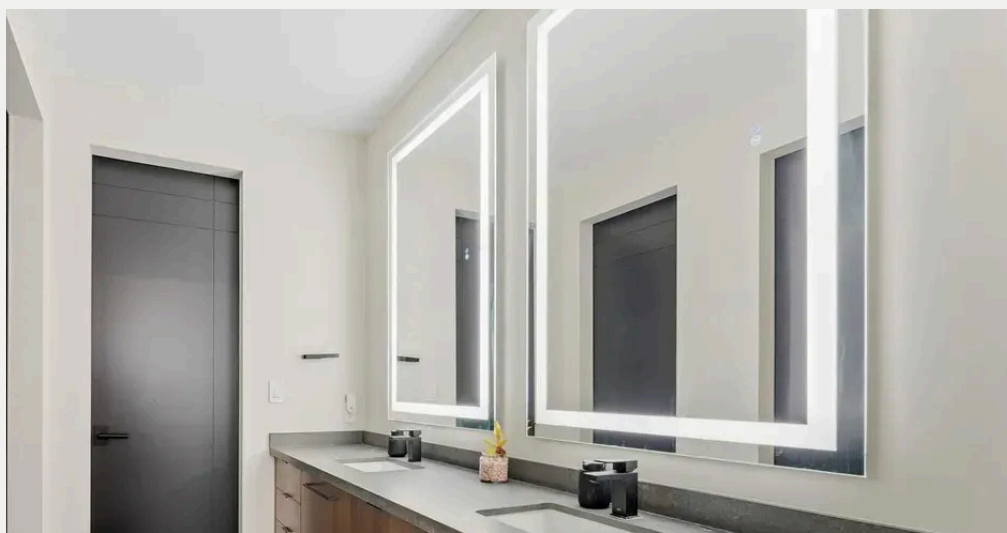


SCHEMPP HOMES

SEE THE DIFFERENCE

THOUGHTFUL LIGHTING +
WIDER OPENINGS

"Every opening intentional. Every light
exactly where it should be."





READY TO CREATE A SAFER, MORE BEAUTIFUL HOME?

We'd love to hear more about your space, your goals, and how we can help. Whether you're planning ahead or ready to renovate, our team is here to guide you through a process that's clear, respectful, and design-driven.

We offer free consultations and are happy to provide referrals, past project photos, or advice based on your needs. There's no pressure — just a conversation to see if we're the right fit.

-Erik Schempp

LET'S TALK



**Thank You for Reading
Whether you're thinking
about the future or facing a
need today, we hope this
guide helped you imagine
what's possible.**

**At Schempp Homes, we
believe your home should
grow with you — beautifully,
safely, and without
compromise. We'd be
honoured to be part of that
journey.**

**If you have any questions,
we're always here to talk.**

— *Erik Schempp,*
Owner, Schempp Homes