

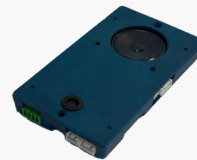
## Emergency Communication System

### Integrated Battery and Low Power Bus

#### Product Datasheet



Digital  
Communication  
Platform (DCP)



COP Unit



Triphony Unit



PIT Unit

#### Decrease your installation time by installing the new emergency communication system from Avire.

The new system includes Digital Audio Units (DAUs) for mounting in multiple locations around the lift shaft and are connected to the machine-room mounted Digital Communication Platform (DCP) using only 2-wires through the travelling cable.

The majority of lift emergency communication installations typically require the use of multiple wires through the travelling cable. These systems are often time consuming to install and can be frustrating if the spare wires are not available. DAU have an integrated battery back-up which means that there is no need to wire to the DCP for power, making it a true 2-wire installation.

The new Digital Audio Units simplify the installation and ensure that the engineer's time on site is kept to a minimum. In addition, the audio unit and accessories located on the lift car connect using a low power bus (LPBus). The connection allows for improved communication with the triphony units using digital rather than analogue communication. Connection between all units on the LPBus is a simple 'plug and play' RJ45 connector. The LPBus also allows the addition of other products easily.

To ensure AS 1735.19:2019 (EN81-28:2018) compliance, the DAU units need to be connected via MK CANBus to the DCP unit in the machine room. The DCP acts as an information gateway between connected products in the lift shaft and our cloud-based monitoring platform; the Avire Hub.

Please refer to our website for more information on Smart Elevators and the Avire Ecosystem.



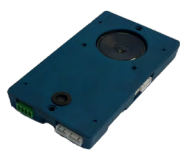
### Key Features

- + AS 1735.19:2019 (EN81-28:2018) compliant
- + Quick to install using only 2-wires in the travelling cable
- + Integrated battery back-up in all units
- + High digital audio quality over 400m cables
- + CAN & LPBus connections
- + Supported by Digital Communications Platform (DCP)
- + Optional inductive loop and triphony units
- + Configure and monitor all connected devices using the Avire Hub

# System Architecture



Digital Communication Platform (DCP)



COP Digital Audio Unit (DAU)



Triphony Unit



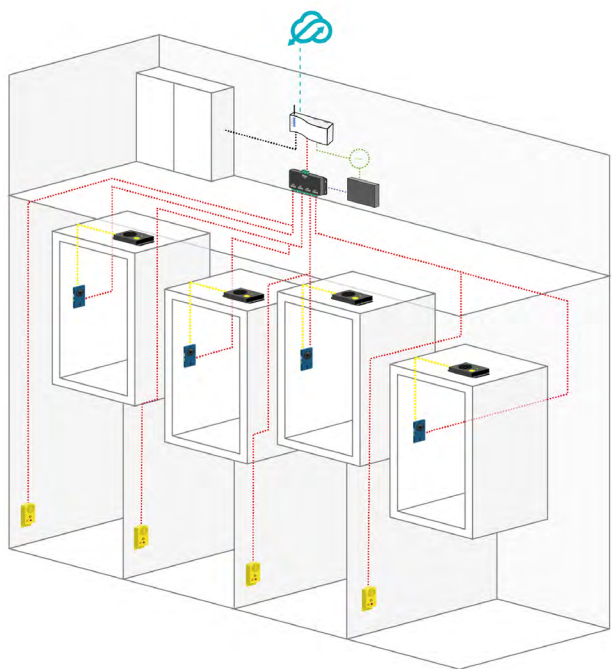
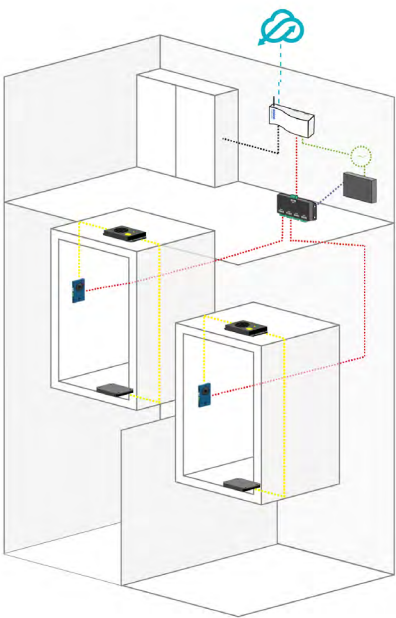
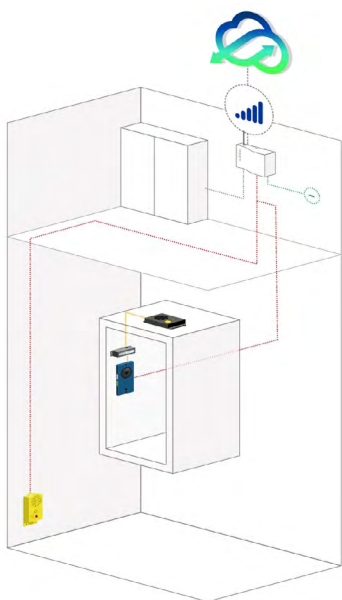
PIT Digital Audio Unit (DAU)



Universal Power Supply



CAN Bus Splitter



# Technical Specification

Digital Audio Units	AC-DAB10-110-F-OL-000	AC-DAP11-110-F-00-000	AC-AET08-100-0-OL-000
Mounting location	Behind COP	Pit	Top of car
Colour casing	Blue	Yellow	Black
Alarm button (for maintenance)	No	Yes	Yes
External pictograms	Yes	No	No
External microphone	Yes	No	No
External speaker	Yes	No	No
Internal microphone	Yes	Yes	Yes
Internal speaker	Yes	Yes	Yes
Battery	Integrated	Integrated	No
Battery fault indicator	Yes	No	No
Phone fault indicator	Yes	No	No
Power Supply	8-28 VDC	8-28 VDC	5VDC
Consumption	43mA - 190mA	43mA - 190mA	20mA-220mA
Connections	CAN & LPBus	CAN Only	LPBUS
Op. Temp.	-10 to +65°C	-10 to +65°C	-10 to +65 °C
Dimensions (WxHxD)(mm)	71mm x 150mm x 23mm	71mm x 173mm x 43mm	84x17409x9.5

## Ordering Information

Part	Description
AC-3CM10-620-F-20-000	3G Digital Communication Platform - GSM/ GPRS/2G/RS-232
AC-4CM10-620-F-20-000	4G Single Sim Digital Communication Platform - GSM/GPRS/2G/RS-232
AC-4CM10-820-F-20-000	4G Dual Sim Digital Communication Platform - GSM/GPRS/2G/RS-232
AC-DAB10-120-F-OL-000	CAN COP Digital Audio Unit
AC-DAP11-110-F-00-000	CAN PIT Digital Audio Unit
AC-AET08-100-0-OL-000	Triphony Unit
AC-ALB02-100-0-OL-000	Inductive Loop
AC-ASM00-100-F-00-000	CAN Bus Splitter
AC-ABV10-100-0-00-000	Universal Power Supply

As a result of our policy of continual improvement, the information in this document is subject to change without notice and it is intended only as general guidance on product performance and suitability. This information shall not form part of any contract.

Comms System LPBus +IB (AUS) V01\_EP 22/04/2020

# AVIRE

**Avire Global Pte Ltd**

Unit 39, 110-116 Bourke Road  
Alexandria  
NSW 2015  
Australia

T: 02 9669 1102  
E: [sales.au@avire-global.com](mailto:sales.au@avire-global.com)  
W: [www.avire-global.com](http://www.avire-global.com)

