

# Equity Advisory Group Meeting: Equity in Place-Based Planning

June 15, 2026



# Welcome and Introductions

Ishmael Nuñez, Uncommon Bridges

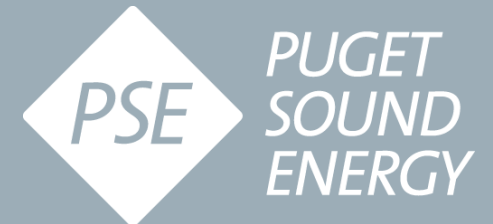
Facilitator



# Safety Moment

Em Piro, Puget Sound Energy

Energy Equity Program Manager - Community Partnerships



# Community Energy Resiliency

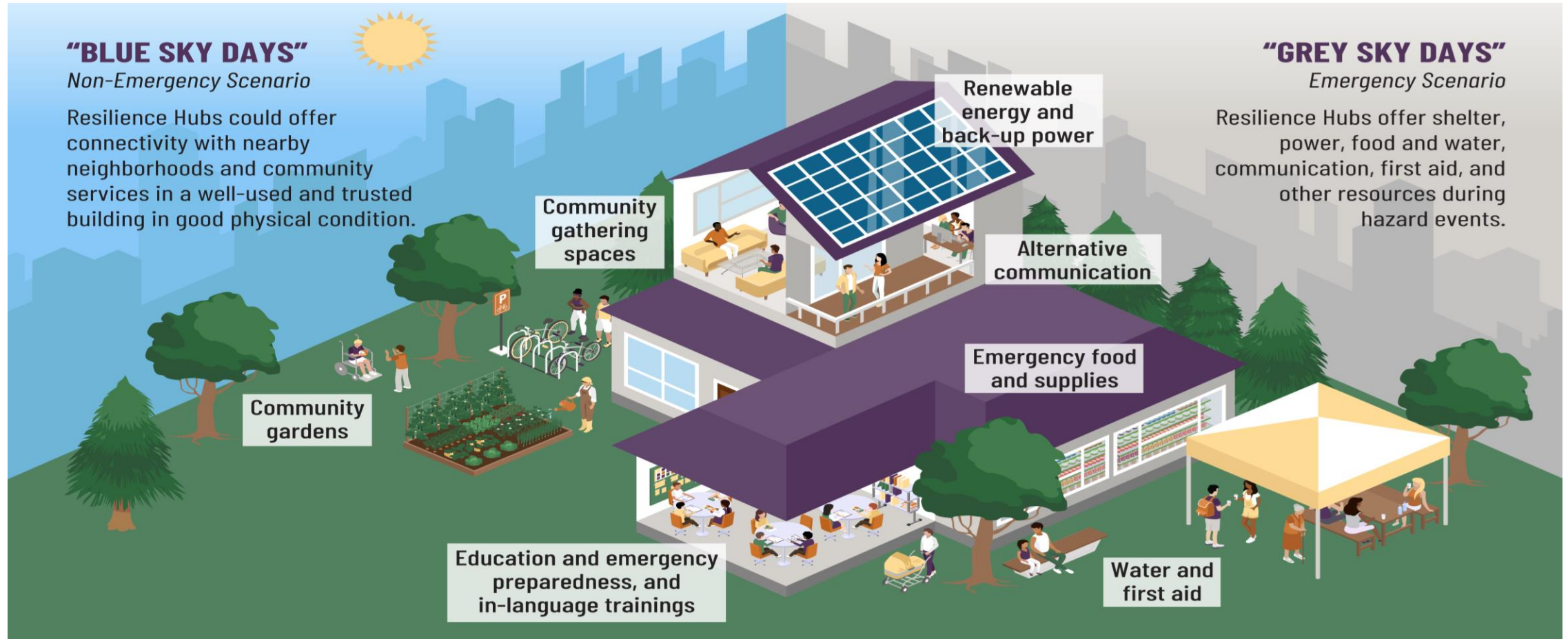


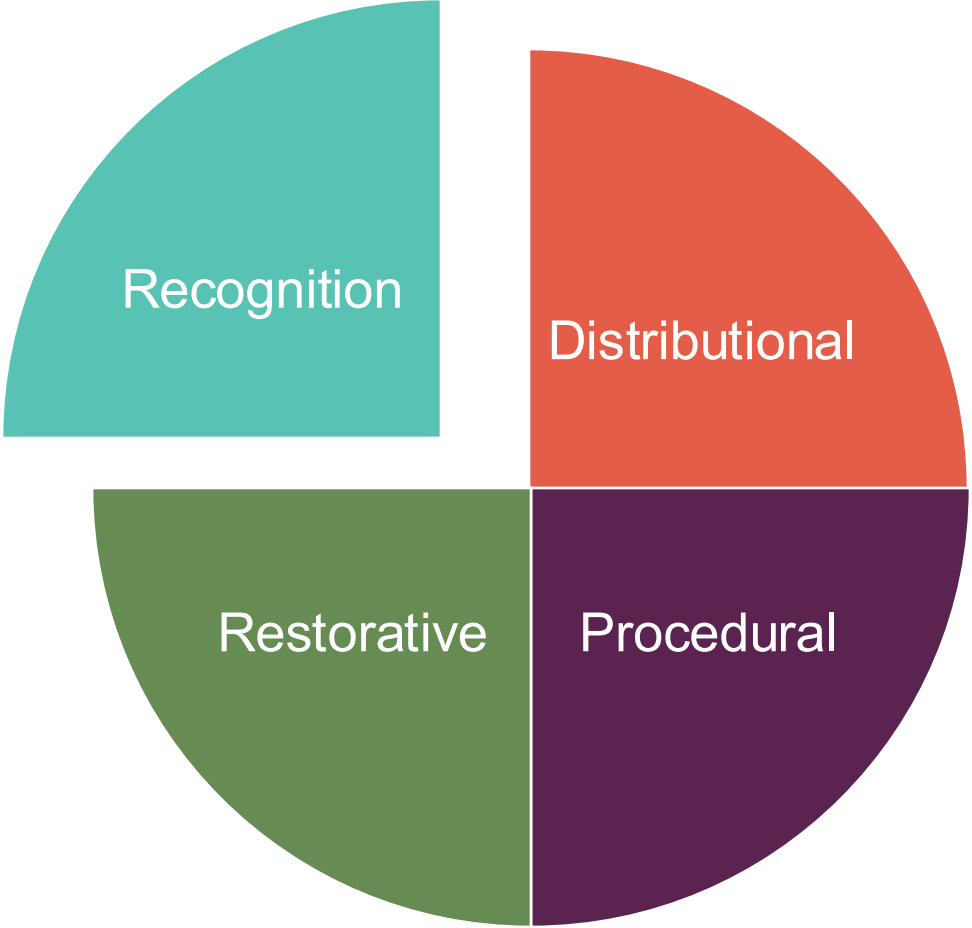
Image: Puget Sound Resilience Hubs

# Equity Moment

Monica Guevara, Equity Advisory Group



# Tonight's equity focus



# Community Engagement

---

Storytime

---

Community priorities

---

Holistic view of  
community engagement



My Why

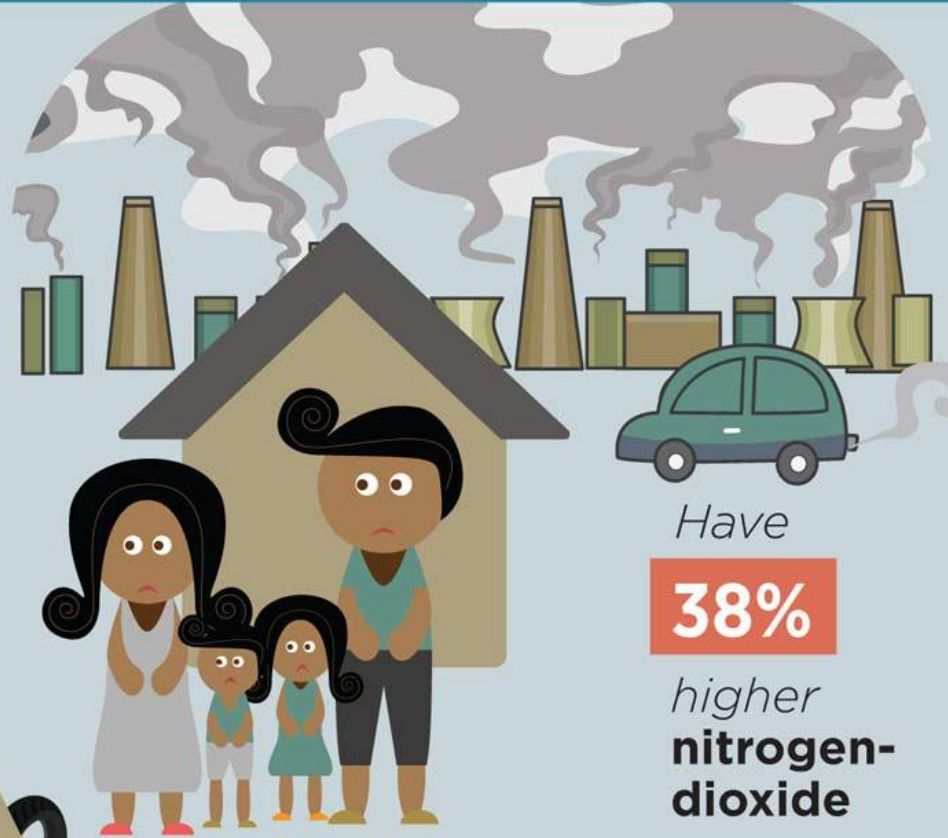


# Environmental Racism Is Nothing New

Race is the most significant predictor of a person living near contaminated air, water, or soil.

**56%**

*of the population near **toxic waste** sites are people of color.*



*People of color:*

*Have seen*

**95%**

*of their claims against polluters **denied by the EPA.***

*Have*

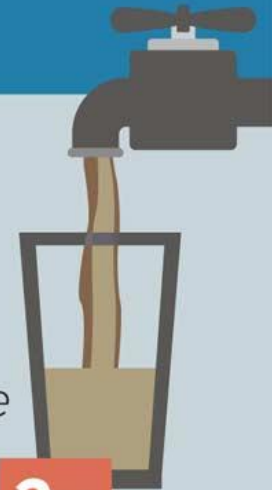
**38%**

*higher **nitrogen-dioxide** exposure.*

*Are*

**2x**

*more likely to live without **potable water** and **modern sanitation.***



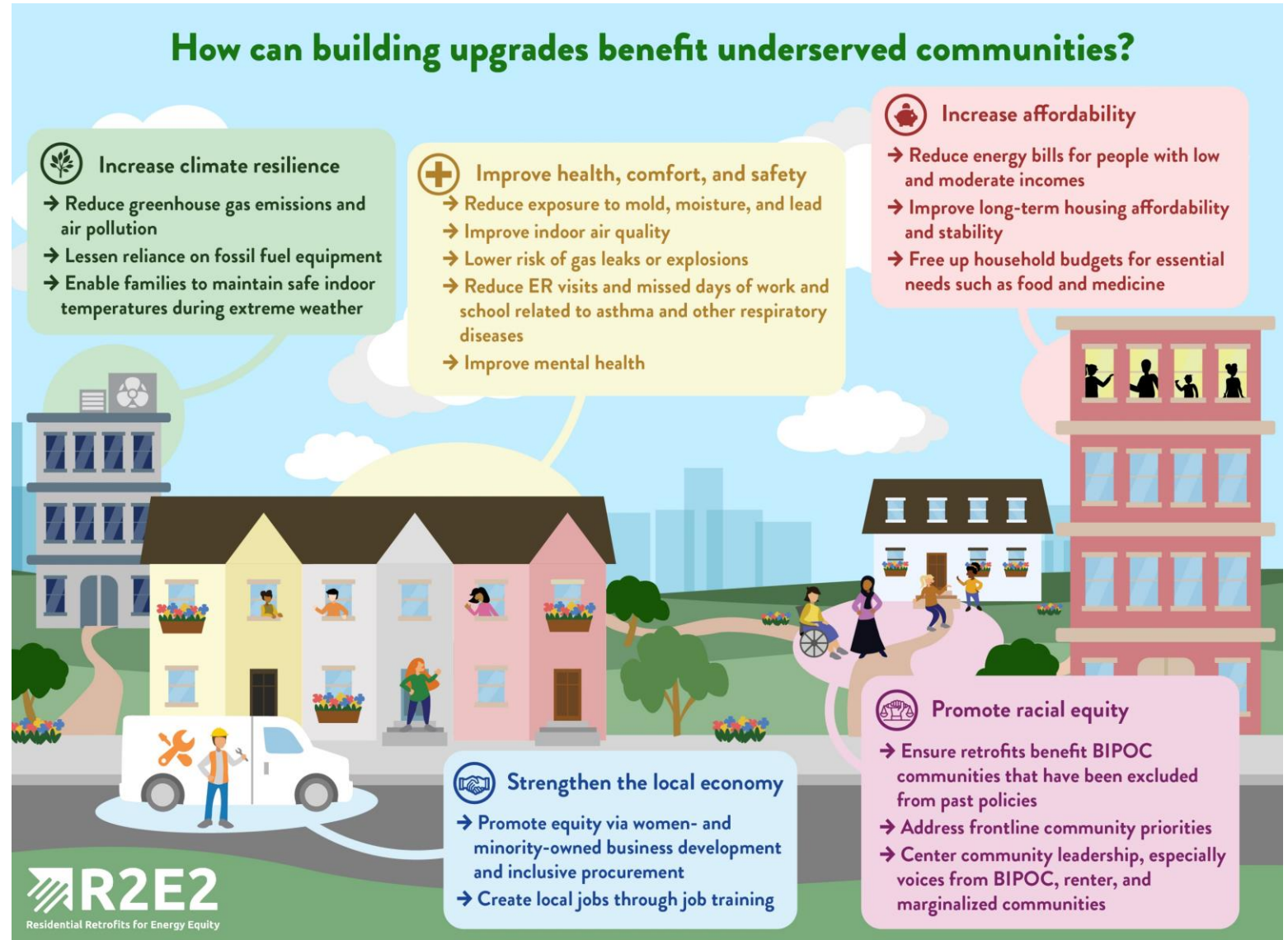


From Finance Bro to Tree Hugger

---

# Community Impacts

- Health
- Living Wage Income
- Wealth Building Opportunities



# Suggestions



Involve community early



Think about holistic impacts and all potential benefits



Two-way communication and feedback



Support community priorities

Other?

# Agenda

- ◆ **5:00 p.m.** Welcome, Safety Moment & Equity Moment
- ◆ **5:20 p.m.** News Briefs
- ◆ **5:35 p.m.** Equity in Place-Based Planning: *Utility-scale infrastructure, neighborhood-scale clean energy, and public participation practices*
- ◆ **6:05 p.m.** BREAK
- ◆ **6:15 p.m.** Discussion: Equity in Place-Based Planning
- ◆ **6:50 p.m.** Public Comment
- ◆ **6:55 p.m.** Next steps

# Let's work together for a successful meeting.

## Participants, please:

- Listen to and appreciate the diversity of views and opinions
- Actively participate in the group
- Behave constructively and courteously towards all participants
- Respect the role of the facilitator to guide the group process

## Observers, please:

- Respect the Equity Advisory Group's time to discuss meeting topics
- In the chat ... describe what lens you are representing today?

# Let's work together for a successful meeting.

## Public Comment

- The public comment period will start at 6:50 p.m.
- Instructions to join will be presented during break.
- **Please do not join the meeting until then.** The first 5 individuals will have 2 minutes each to speak.

## Livestream

- Observers can watch the meeting through the YouTube livestream link.
- A facilitator is monitoring the YouTube chat. You may ask questions or make comments throughout the meeting.

# PSE Energy Equity News

Ariam Ford, AICP, Uncommon Bridges



# PSE Energy Equity News



## Today's Top Stories

# PSE Energy Equity News

**Integrated System  
Plan (ISP) Rounds  
Corner on Initial  
Reference Case**

**Energy Equity Team  
to Launch System-  
Wide Equity  
Assessment**

# PSE Energy Equity News

## Integrated System Plan (ISP) Rounds Corner on Initial Reference Case

- ISP Team collaborating with EAG since 2024
- The reference case is a key step in the analysis based on one potential future scenario – its a starting point for all modeling and analysis, not a final decision
- **Initial results show the need for significant new energy resources and infrastructure to meet customer needs and clean energy requirements**
- **Initial rate impact analysis reinforces concerns about the potential costs to customers**

# PSE Energy Equity News

- 1st System-Wide Equity Assessment at PSE
- Evaluates the integration of equity utility-wide
- Use to create tailored and responsive approaches
- Suzanne Tedrow, Energy Equity Manager named SWEA Lead
- EAG to be part of the process
- Exploring potential on-site event in Fall 2026



**Energy Equity Team  
to Launch System-  
Wide Equity  
Assessment**

# Equity in Place-Based Planning:

## Utility-Scale Planning

Corey Corbett, Manager, Operations & Rate Plan Performance

## Neighborhood-Scale Clean Energy

Heather Mulligan, Manager, Customer Clean Energy Solutions

## Public Participation Practices

Shelby Naten, Supervisor, Communications



# This meeting introduces EAG collaboration on equity in place-based energy planning

PSE

## We will discuss equity considerations around....

- Deciding where to invest in our grid and tailoring our approach in named communities
- Using infrastructure investments as a pathway to strengthening community
- Co-locating community benefits in balance with utility operational needs and regulatory permitting requirements
- Naming elements of energy sovereignty frameworks (Tribal) that fit within our named community engagement strategy (non-Tribal)

At this meeting the EAG will set the foundation for a long-term **collaboration**\* with PSE in order to:

- Better understand what opportunities and potential outcomes exist to provide resilience and develop energy infrastructure
- Identify criteria (beyond technical factors) that achieve need-based goals for named communities in addition to reliability and load growth

## Why are we discussing this topic?

- 💡 This topic is not a regulatory requirement, but may inform regulatory proceedings, and
- 🤝 This topic supports PSE's strategic energy equity goals.

*\*See Appendix for descriptions of IAP2 engagement types.*

# 2026 PSE EAG Priority Action Plan Worksheet

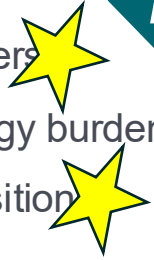
EAG Priority	Goal Statement	System Level Impact	2026 EAG Actions	EAG Audience
Accessibility	Everyone can access PSE's programs and services with relative ease. No one faces unfair obstacles; operations are culturally responsive and respect the diverse experiences of all communities.	Greater leverage of the existing connection PSE has with named communities and deepest-need customers in PSE investments.	<ul style="list-style-type: none"> <li>Advocate for and advise on expanding systems that ease enrollment access</li> <li>Provide guidance on systemic obstacles to program participation for customers with diverse needs and circumstances</li> </ul>	PSE Staff, Community-Based Organizations and Other Agencies
Affordability	All customers, especially those in named communities, view energy affordability as standard. The cost of energy is no longer a barrier to accessing essential services. By using data and community input to guide decisions, investments, and results are fair and equitable for everyone in all communities.	Elimination of high energy burden.	<ul style="list-style-type: none"> <li>Advocate for a more equitable rate structure</li> <li>★ Advocate and provide perspective on finding "hidden" customers who need access but are missed by current identification methods</li> </ul>	The UTC, PSE Staff
Accountability	PSE is a reliable partner that demonstrates how commitment to equity can enhance the well-being of customers. Its accountability systems help lessen burdens and give more power to the voices of the community.	Quantitative and qualitative results reflect the experiential results of distributional equity efforts.	<ul style="list-style-type: none"> <li>★ Support and advise PSE to build trust and stronger accountability measures</li> <li>★ Guide and provide perspective on accountability mechanisms that demonstrate how equity commitments translate into community benefits, reflected by community experience</li> </ul>	PSE Staff
Advocacy	Through strong partnerships and community involvement, PSE and the EAG work together to create lasting change. They advocate for fair energy policies and make sure that solutions led by the community help shape a clean and equitable energy future.	Policy and practice change in the areas of energy affordability, reliability, sufficiency, and abundance.	<ul style="list-style-type: none"> <li>Leverage collaboration and influence to affect rules, laws, and business practices governing energy utilities</li> </ul>	PSE, Tribes, the UTC, and other regulators, legislatures, business communities, and Named Communities



# Themes in GRC 2026 Equity Testimony



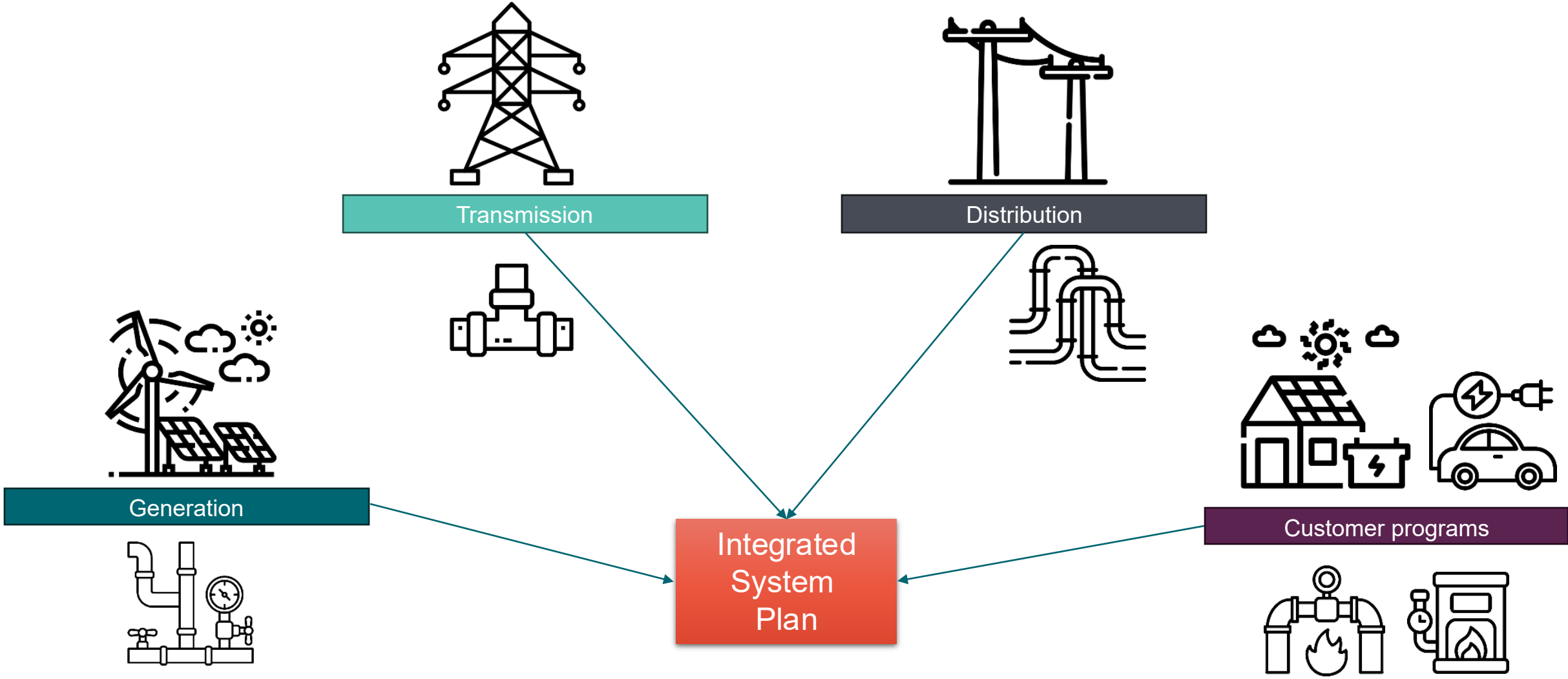
- Focus on efforts that **deliver meaningful outcomes & impact** to customers
- Focus on **affordability** and **reduce energy burden** to low income & energy burdened customers
- **Simplify process for customers to participate** in the clean energy transition



Themes	Deliver meaningful outcomes		Affordability, Accessibility		
Approaches	Relationship-based approach to procedural justice	Energy assistance programs	Time-of-Use service		
	System-Wide Equity Assessment	Streamlined energy assistance application process	Utility-led investments benefiting named communities		
Proposals	Remove DEA on 80MW DER Portfolio	Reduce energy burden through rate design	Prioritize energy assistance to low income & energy burdened customers		



# Integrated system planning includes infrastructure components



## Delivery System Planning:

A strategic, integrated, and equitable approach to planning and developing electric and natural gas infrastructure to provide safe, reliable, and resilient energy services for our customers.

**Corey Corbett**

**Manager, Operations and Rate Plan Performance**

# Four years of collaboration with the EAG has helped integrate Equity into system planning

## Previous discussions with EAG on Delivery System Planning:

- November 14, 2022 – Overview & understanding of Delivery System Planning for EAG members.
- March 20, 2023 – EAG collaboration and input on how to incorporate equity into Delivery System Planning.
- November 13, 2023 – Recap of how EAG input is used for infrastructure portfolio investment decisions.



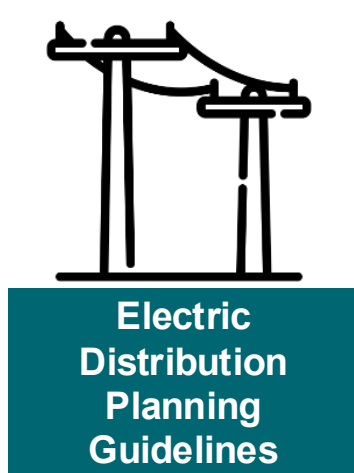
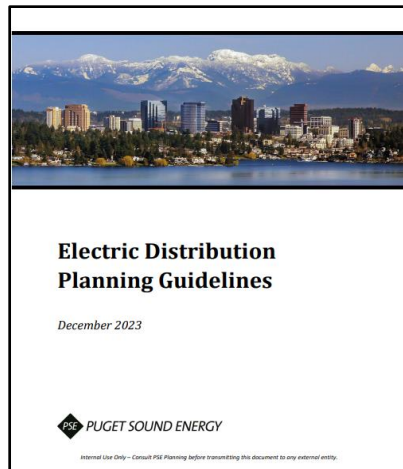
**Incorporating Equity into Delivery System Planning Benefit Cost Analysis (iDOT)\***

# Delivering customers safe and reliable energy through electric and natural gas delivery system planning



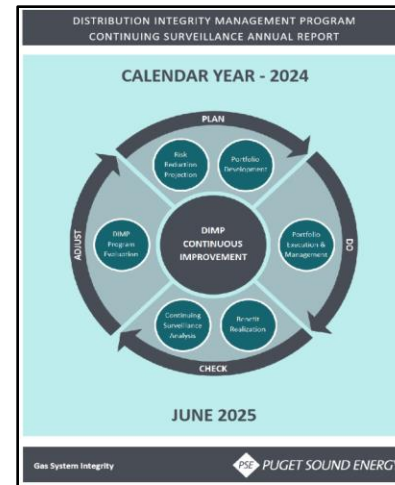
## Electric Delivery System

- Safety
- Capacity
- Reliability



## Natural Gas Delivery System

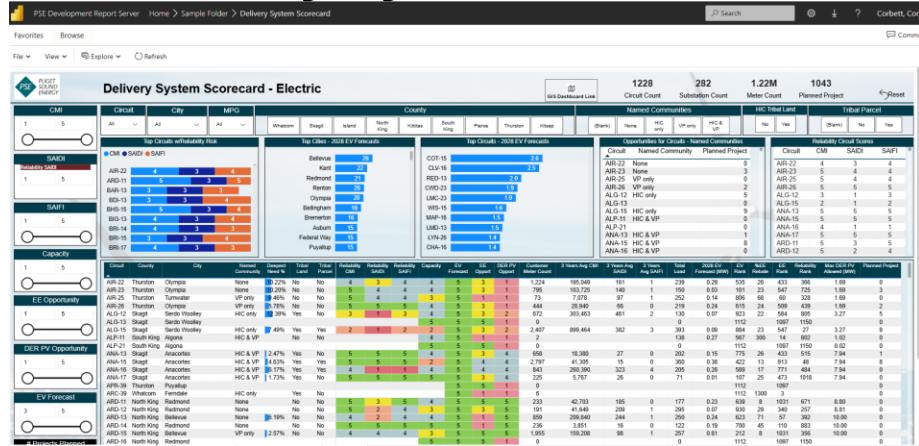
- Integrity Management (Safety)
- System Reliability



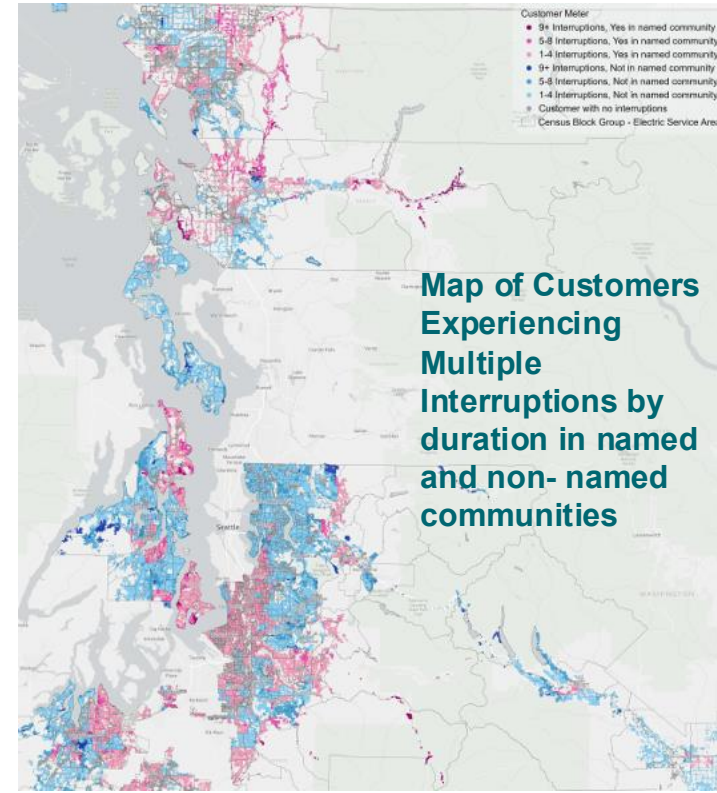
Our evaluation tools support equity integration by evaluating costs, benefits, locations of named communities, and performance data across our service area



## Delivery System Scorecard



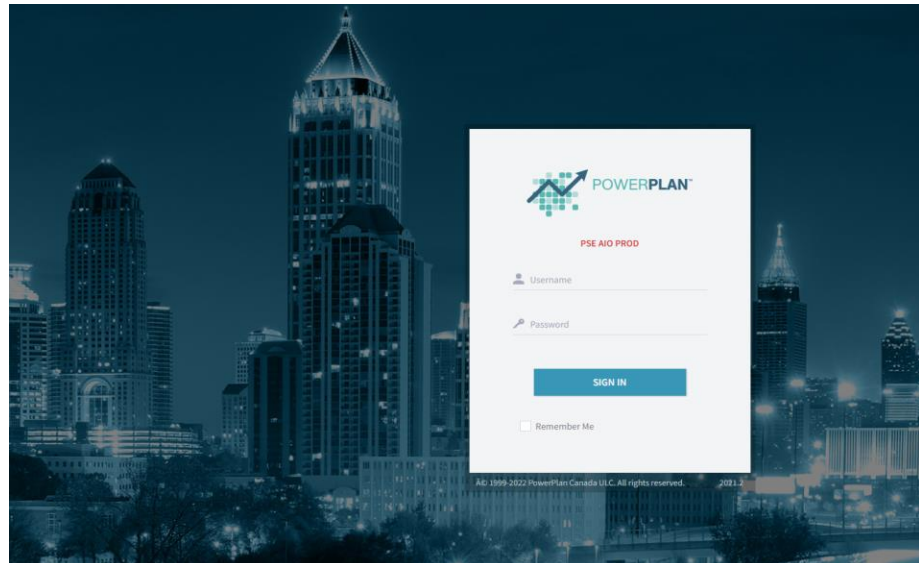
## Performance Based Regulation UTC Docket U-210590



Map of Customers Experiencing Multiple Interruptions by duration in named and non-named communities

Note: CY2025 Performance Based Regulation Metrics Reported in Docket UE-260334

iDONT



2025 Results	Without Major Event Days		With Major Event Days	
	Average Duration	Median Duration	Average Duration	Median Duration
Non-named community	167	102	390	137
Named community	173	88	339	125

# Our Puyallup Underground Conversion leverages available grant funding to provide equitable and reliable energy services for our named community customers



## Grant Program:

Grant award (contingent) from Department of Energy

## Project Description:

Grid hardening effort to underground 1.1 miles of overhead feeder and distribution lines, reducing tree-related outages/storm-related damage to improve customer reliability and resiliency.

## Customers Benefitting:

Over 1,600 high VP customers in a Puyallup neighborhood.

## Key Partners:

- City of Puyallup
- Forever Green Trails



# GRACE redefines planning by moving from utility-led decisions to community-powered collaboration

The Grid Resiliency and Clean Energy (GRACE) program is a focused partnership between PSE and Named Communities, delivering a coordinated set of energy solutions aligned with community needs and PSE's grid resiliency goals.

## GRACE Objectives:

- **Engagement:** Understand community needs, goals, values, governance structure, and engagement approach
- **Co-Development:** Collaborate on aligned customer and grid solutions
- **Agreement:** Define a joint partnership and clear scope of work

## Iterative Engagement Process:



# Advancing equity requires intentional and timely engagement from the delivery system planning process through project delivery

PSE



**Distributed Energy Resources:**  
Energy isn't only built in utility-scale power infrastructure; it's also grown in neighborhoods where people live.

**Heather Mulligan**  
**Manager, Customer Clean Energy Solutions**

# What are Distributed Energy Resources or "DERs"?



- **A key part** of the clean energy transformation
- **Smaller-scale resources** connected to local distribution system
  - Ex: Solar panels for single- and multi-occupant housing or local businesses, residential batteries, demand response
- **Located where people live and work** - on someone's property, at community facilities, in neighborhoods
- **Closer to energy users** than traditional large "utility scale" power plants
- **Community-based clean energy products** that residents can see and benefit from directly



Bonney Lake Community Solar

# The EAG has directly shaped PSE's DER program offerings.



*Just a few examples...*

## Green Power Solar Grants

EAG participation for five years and ongoing  
Improvements made to application process, outreach, partnership with grantees

## Net Energy Metering

- EAG input on current NEM design and what is needed to increase equitable access.
- Input is included in filings as "NEM 2.0" is developed

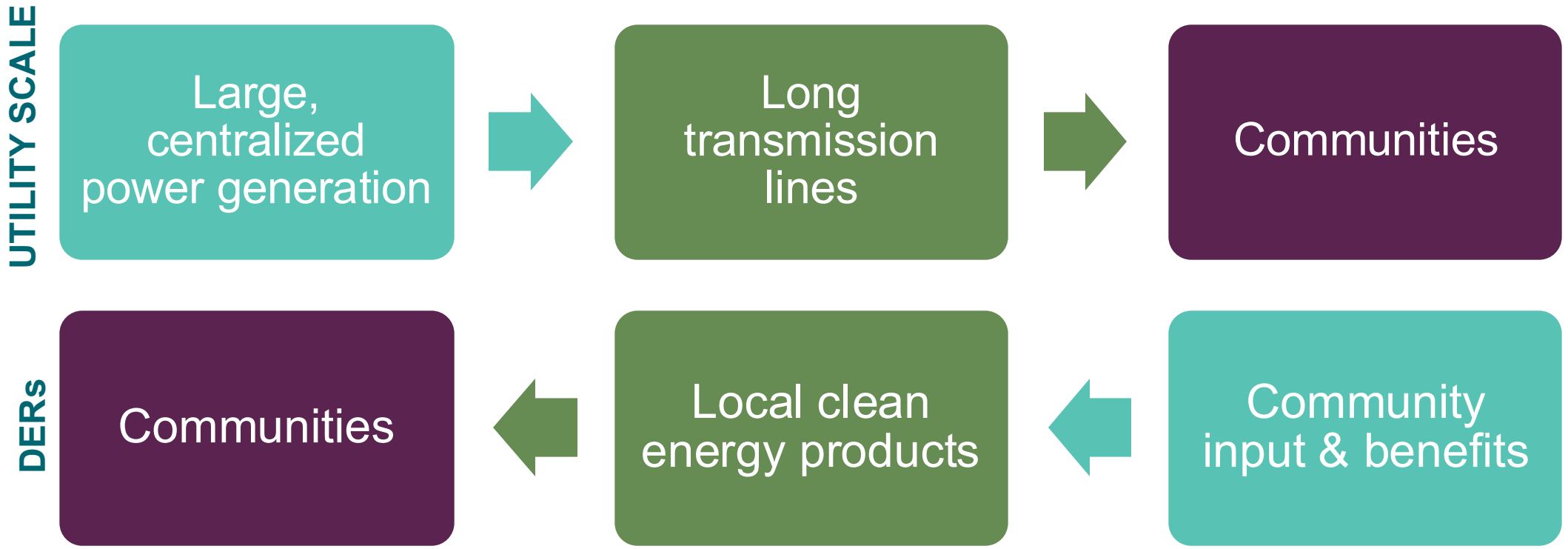
## Community Solar Program

- EAG feedback led to allowing low-income customers to double their subscription to up to two shares, increasing the financial impact of being in the program

## Enhanced Incentives, Residential Batteries, Demand Response and other DER topics

- EAG advised on persistent barriers and supported team in strategizing program improvements overall





# Utility-scale resources send power to communities. DERs localize power solutions alongside communities.



- Brings clean energy transition directly to neighborhoods
- Potential to create local economic and resilience benefits
- Empowers community members to actively shape their energy future

# Pairing technology solutions unlock more value such as clean energy AND Resilience



Technology →  ↓Types of benefits	<b>Solar</b> 	<b>Battery</b> 	<b>Demand</b> 	<b>Solar + Battery + Demand Response</b> 
Clean Energy	✓	✗	✗	✓
Backup Power	✗	✓	✗	✓
Grid Support	✗	✗	✓	✓
Bill Savings	✓	✗	✗	✓

*Community resilience + clean energy benefits*

# From a single household to entire neighborhood, clean energy solutions scale with community vision and direction



Residential  
Swinomish Tribe



Organizational Scale  
Good Cheer Food Bank

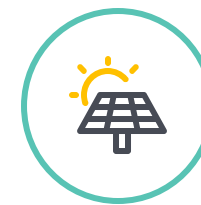


Community Scale  
Serving multiple households &  
orgs within a community

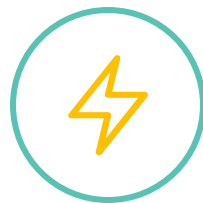
# Energy Orchestration is the path forward.



**Customer-Forward Experiences**



**Grid Resilience**



**Grid Flexibility**



**Economic Uplift**



**Affordability & Value**



# Today's individual efforts may become tomorrow's coordinated community infrastructure – planned by, with, and for neighbors



## **Residential**

Individual programs,  
primarily Net Energy Metering & Flex Batteries

## **Organization**

Solar + Battery at single sites

## **Community Scale**

Ad-hoc



## **Community-scale systems**

serving multiple households and organizations

## **Coordinated Benefits**

clean energy + resilience + economic benefits

## **Community leadership**

in planning and decision-making

*How do we coordinate clean energy investments in named communities in ways that create multiple benefits and position communities to lead?*

## Public Participation:

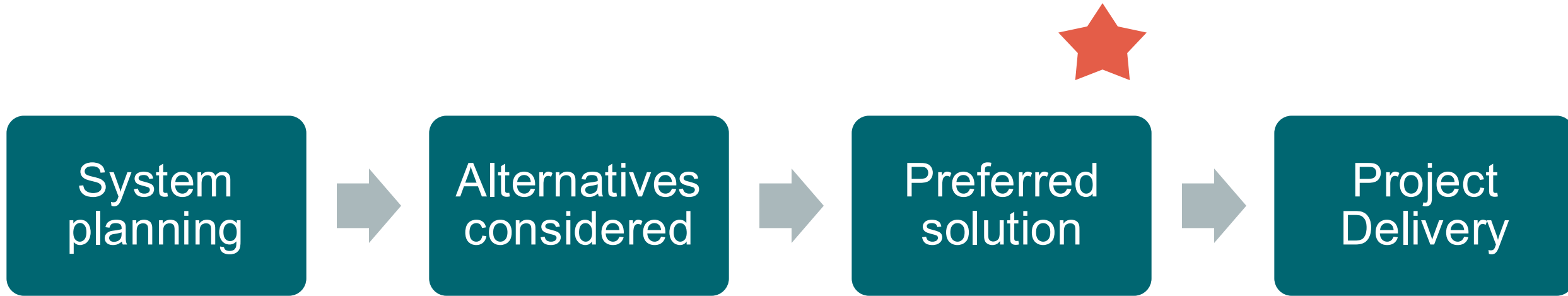
The best grids are both technically sound, and are built in continuous conversation with the people they serve.

**Shelby Naten**

**Supervisor, Project Communications**

# Solution to delivery, engagement as a means of fine-tuning

PSE



# On-the-ground presence

PSE



## Educate and inform

- Project need, solutions, and benefits
- Variety of tools and tactics, tailored to the audience



## Consult and involve on siting

- Route and site new infrastructure within project bounds, in some cases



## Continuous communication

- Information flow to and from the project team
- Questions, maps, graphics
- Project launch to construction wrap up, typically years in duration

## PSE Partners

- Community Affairs
- Local Government Affairs
- Customer Outreach
- Permitting
- Municipal Liasons
- Project Delivery

# Partnering with communities, reaching customers



**Alaskan Way Viaduct**  
High Pressure Natural Gas Main Relocation



**Pierce 230 kV**  
New 230kV transmission  
(*Central Pierce*)



**Sammamish Juanita**  
New and upgraded  
transmission  
(*Kirkland, King*)

**COMMUNITY MEETING ON PSE ELECTRIC SYSTEM  
UPGRADE IN BELLEVUE'S LAKE HILLS NEIGHBORHOOD**

Puget Sound Energy invites you to a community meeting to discuss PSE's plans to increase electric reliability for the Lake Hills, Phantom Lake, Robinswood and Crossroads neighborhoods in Bellevue by building a new transmission line connecting our Phantom Lake and Lake Hills substations.

Refreshments and information provided  
Tuesday, Nov 13, 2007  
5:30-7:30 p.m.  
Lake Hills Club House  
15200 Lake Hills Blvd  
Bellevue, WA

For PSE project information, contact:  
Jim Hutchinson  
Government & Community Relations Manager  
Puget Sound Energy  
425-462-3769  
jim.hutchinson@pse.com



**Lake Hills Phantom Lake**  
New 115kV transmission  
(*Bellevue, King*)



**Energize Eastside**  
115kv to 230kv rebuild  
(*Bellevue, King*)



**Murden – Winslow 115kV**  
New 115kV transmission  
(*Bainbridge, Kitsap*)



**Microgrids**  
(*Glacier, Samish, Tenino*)

## Break

The public comment period will start at 6:50 p.m.

**Please do not join the meeting until then.** The first 5 individuals will have 2 minutes each to speak.

Join the Zoom meeting:

- a) Visit <https://zoom.us/join>
- b) Insert Meeting ID: **880 4612 8281**
- c) Call in to the meeting:
  - a) Call number: +1 253 215 8782 US
  - a) Insert Meeting ID: **880 4612 8281**



*"Elements of Power" by Angie Hinojos, a PSE "ARTility" Collaboration*

# What are your reactions to equity practices and opportunities in place-based energy planning?



<https://www.menti.com/al45g6k6xdtc>

- Can you give an **example of an infrastructure project** that created co-benefits, like the presenters described? What made it work well?
- How will we know if a **place-based investment could create positive outcomes** for community? What are the signs?
- When balancing community benefit, utility operations needs, and regulatory requirements, what **equity principles** should be front of mind?
- What is the **next evolution of engagement** around place-based investments in named communities?
- After this discussion, **what EAG priorities and actions** are we more prepared to push toward?

# Appendix

# IAP2 Feedback Levels

Inform - To provide the public with balanced and objective information to assist them in understanding the problem, alternatives, opportunities and/or solutions.

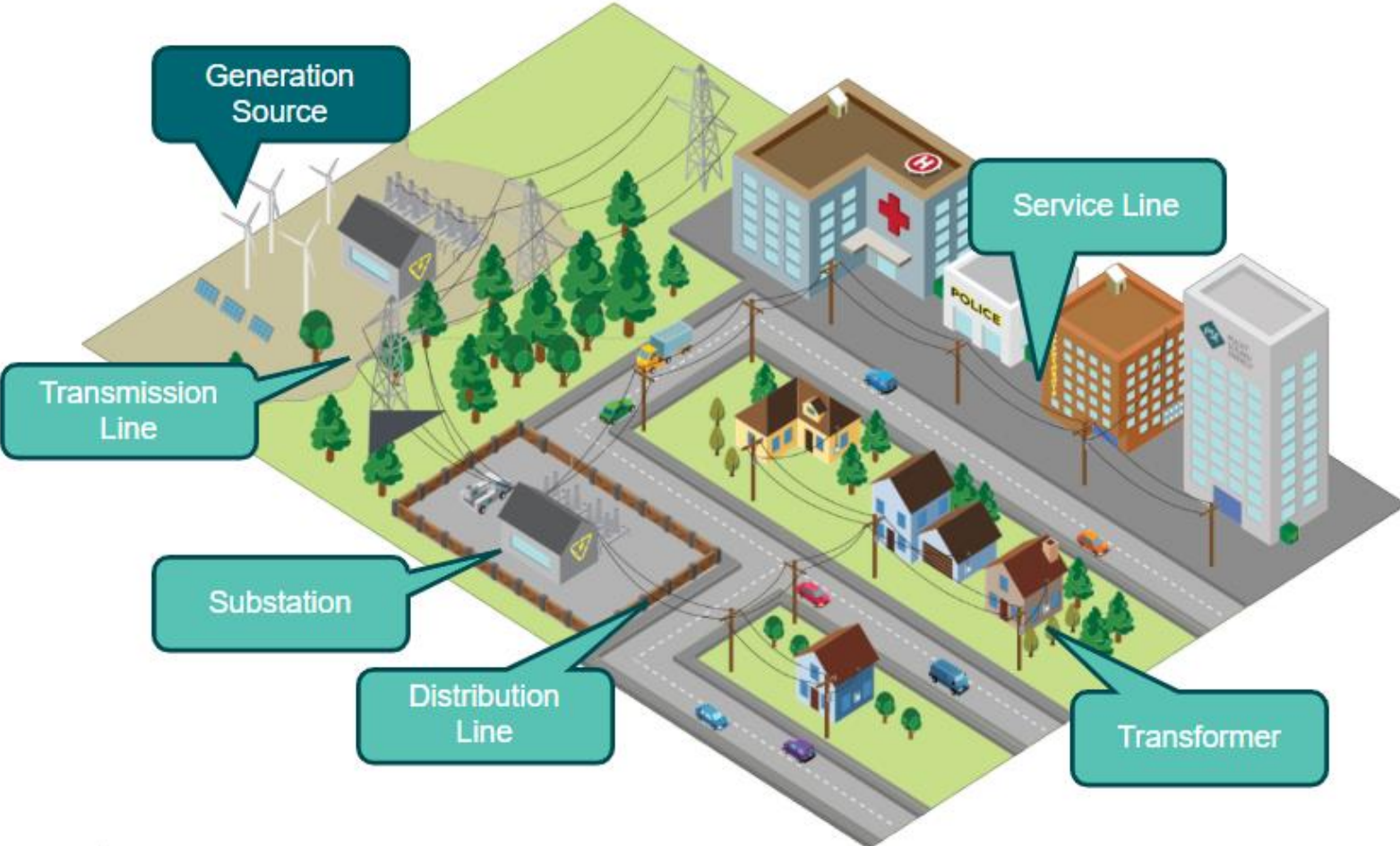
Consult - To obtain public feedback on analysis, alternatives and/or decisions.

Involve - To work directly with the public throughout the process to ensure that public concerns and aspirations are consistently understood and considered.

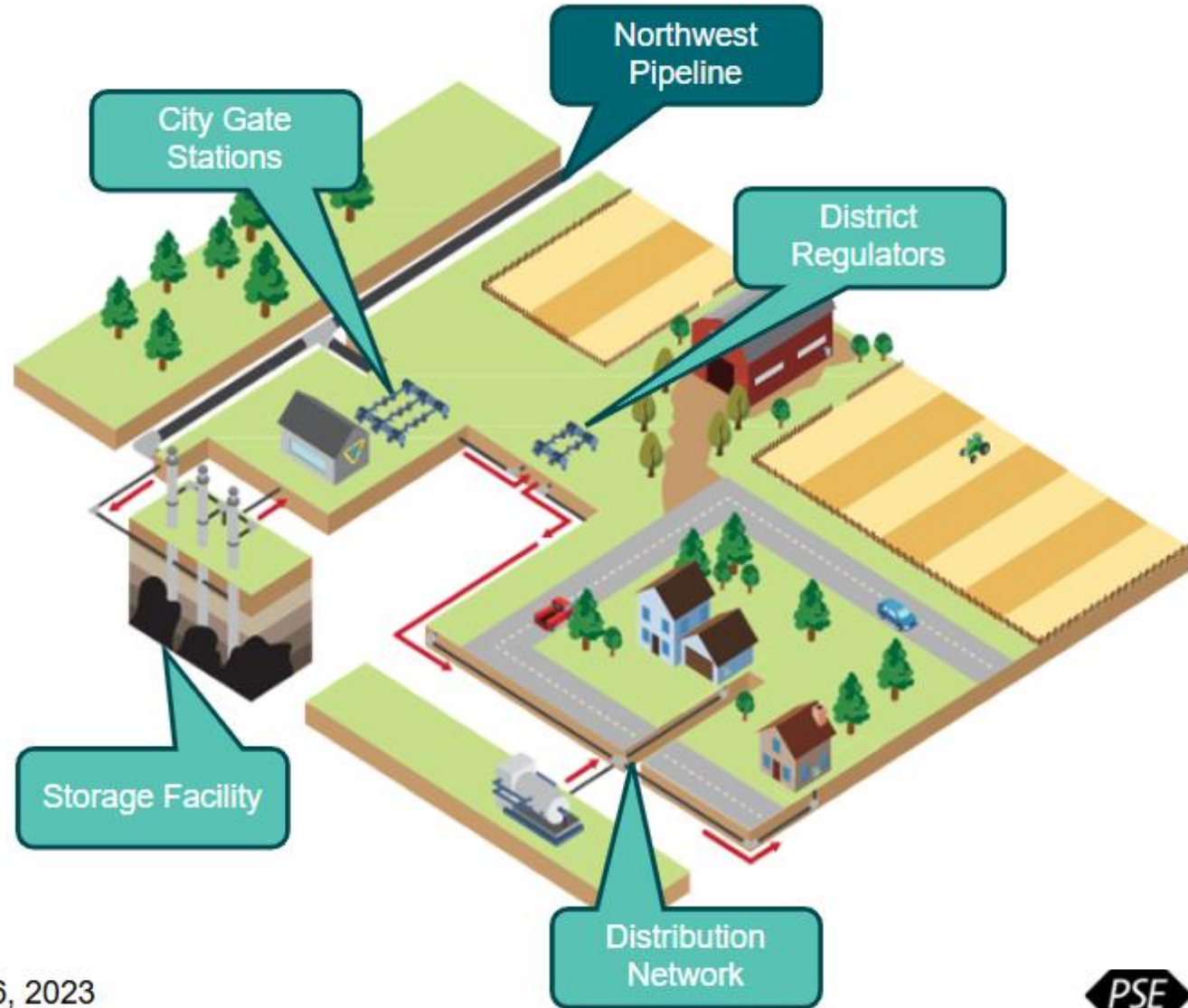
Collaborate - To partner with the public in each aspect of the decision including the development of alternatives and the identification of the preferred solution.

Empower - To place final decision making in the hands of the public.

# Electric Delivery System



# Delivery System - Gas



November 6, 2023

