

PSE's first Clean Energy Implementation Plan

Join us on the path to 100 percent clean electricity

The 2021 Clean Energy Implementation Plan (CEIP) is a four-year roadmap that will guide PSE's future clean electricity investments. It is the first of many plans to get us to our goal of 100 percent clean electricity by 2045 and help ensure all customers benefit from the clean electricity transition.

The CEIP is a four-year roadmap that:



Moves PSE forward to over 60% clean electricity by the end of 2025 – well on the way to meeting our clean energy goals for 2030 and 2045.



Removes coal as a source of electricity from our grid by the end of 2025.



Ramps up our clean electricity resources - like large-scale wind and solar generation, as well as local rooftop and ground solar energy projects that partner with homes and businesses.



Provides customers with more opportunities to save energy and reduce their costs through improving their energy efficiency.



Sets a new direction for local rooftop and ground solar and battery storage programs, as well as incentives to reduce energy use during peak periods.



Ensures the benefits of the clean energy transition are distributed equitably and sets us on the path to building a more inclusive, carbon-free future.

Background

The CEIP is an important piece of our long-term energy planning efforts to eliminate carbon emissions from our region's electricity supply and meet the goals of Washington's Clean Energy Transformation Act, a new law that enables PSE to move further and faster on delivering clean electricity.

The electricity that powers your home or business comes from a variety of sources. Today, more than 35 percent of PSE's electric energy supply comes from clean sources like wind and hydropower that don't emit greenhouse gas emissions. Our shared goal is to reach 100 percent clean electricity by 2045.

Clean electricity milestones



2025
Coal-free electricity

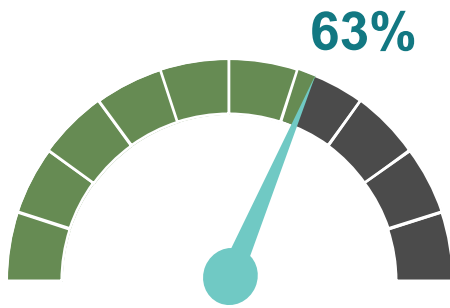


2030
Carbon-neutral electric system



2045
100% clean electricity

One of PSE's goals in the CEIP is to increase our mix of clean electricity from 35 percent to 63 percent



PSE clean electricity portfolio
forecast by **end of 2025***

**measured as a % of net retail load*



Energy efficiency programs that lower the amount of energy we use:

Programs like rebates for energy efficient appliances, grants for retrofits, upgrades in energy-intensive buildings and income-based weatherization.



Demand response programs that reduce demand for energy during peak periods:

Programs that modify the way customers use energy during busy times of day through voluntary actions or smart thermostat devices.



Renewable energy programs:

Electricity generated through large-scale wind turbines and other resources, as well as rooftop and ground solar panels spread throughout a community.



Battery storage programs:

Batteries can store excess renewable energy and discharge it later when the energy is needed, as well as provide back-up power.

We're working to ensure all customers benefit from the transition to clean electricity

As we work to create a new clean energy future and address the urgent need to limit climate change, we must do so in a way that ensures all of our customers, especially vulnerable and highly impacted communities that shoulder an outsized share of climate change burdens, are included in the transition to clean electricity.

Ways to stay engaged:

- Visit our website to learn more: cleanenergyplan.pse.com
- Submit a comment or question via email: ceip@pse.com
- Leave a voice message by calling: 425-818-2051

