

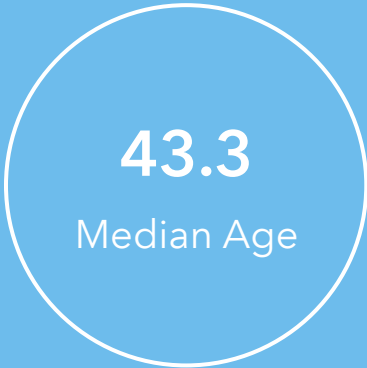
# TARGET MARKET SUMMARY

8565 Five Parks Dr, Arvada, Colorado, 80005

Ring: 1 mile radius

Created for prospective tenants by SFinvest Real Estate

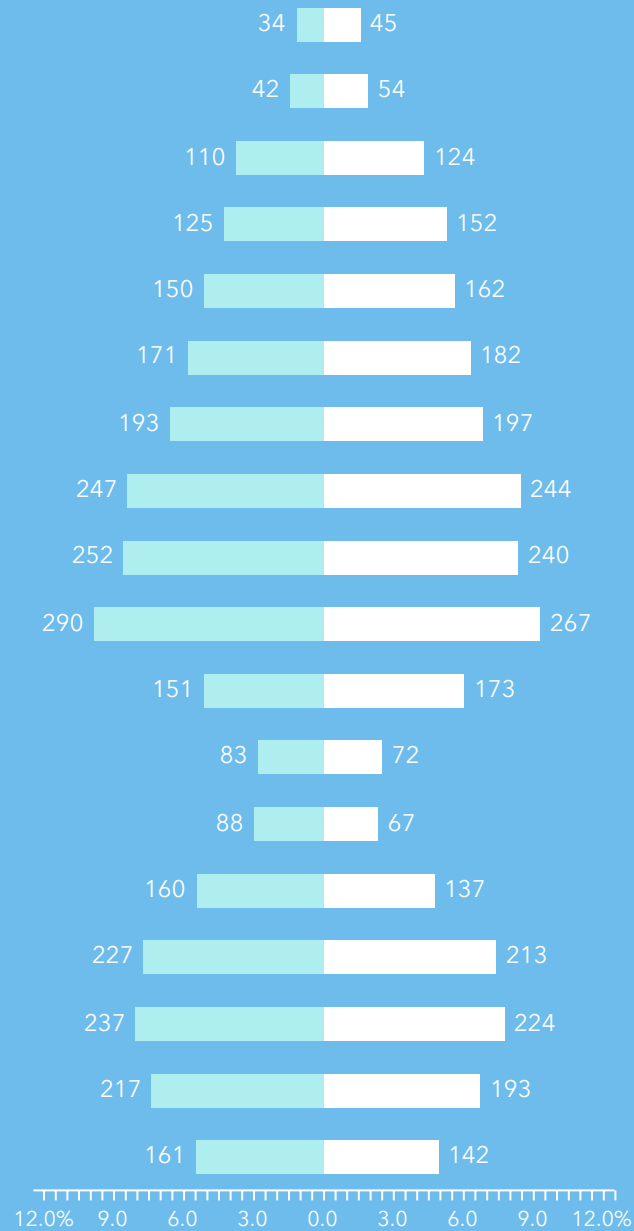
## Key Facts



Source: This infographic contains data provided by Esri (2024, 2029), Esri-U.S. BLS (2024), Esri-MRI-Simmons (2024).

© 2025 Esri

## Age Pyramid



The largest group:  
2024 Males Age 40-44

The smallest group:  
2024 Males Age 85+

## Annual Lifestyle Spending



\$6,838

Travel



\$176

Theatre/Operas/Concerts



\$135

Movies/Museums/ Parks



\$183

Sports Events



\$17

Online Games



\$295

Audio

## Tapestry segments



1D

Savvy Suburbanites  
881 households

43.5%  
of Households



1C

Boomburbs  
587 households

29.0%  
of Households



1B

Professional Pride  
462 households

22.8%  
of Households



# TARGET MARKET SUMMARY

8565 Five Parks Dr, Arvada, Colorado, 80005

Ring: 3 mile radius

Created for prospective tenants by SFinvest Real Estate

## Key Facts

52,785

Population

42.9

Median Age

2.7

Average Household Size

\$145,010

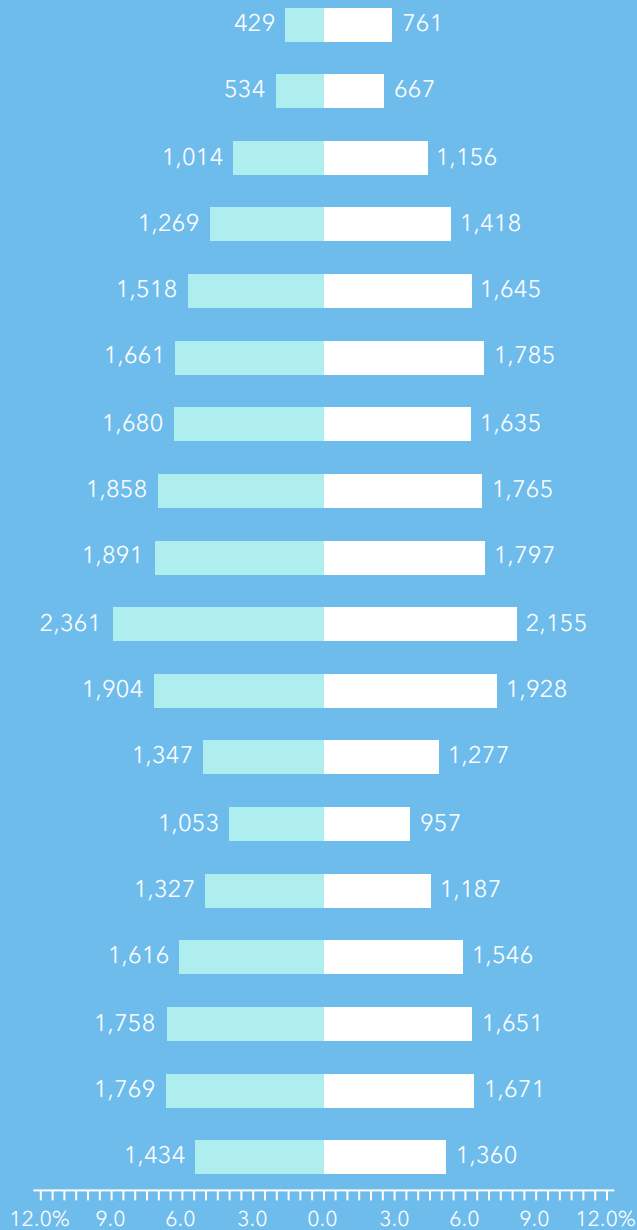
Median Household Income



Source: This infographic contains data provided by Esri (2024, 2029), Esri-U.S. BLS (2024), Esri-MRI-Simmons (2024).

© 2025 Esri

## Age Pyramid



The largest group:  
2024 Males Age 40-44

The smallest group:  
2024 Males Age 85+

## Annual Lifestyle Spending



\$5,292

Travel



\$140

Theatre/Operas/Concerts



\$105

Movies/Museums/ Parks



\$142

Sports Events



\$14

Online Games



\$233

Audio

## Tapestry segments



1D

Savvy Suburbanites  
5,881 households

30.0%  
of Households



1B

Professional Pride  
3,254 households

16.6%  
of Households



6A

Green Acres  
1,923 households

9.8%  
of Households



# TARGET MARKET SUMMARY

8565 Five Parks Dr, Arvada, Colorado, 80005

Ring: 5 mile radius

Created for prospective tenants by SFinvest Real Estate

## Key Facts

153,011
Population

40.9
Median Age

2.5
Average Household Size

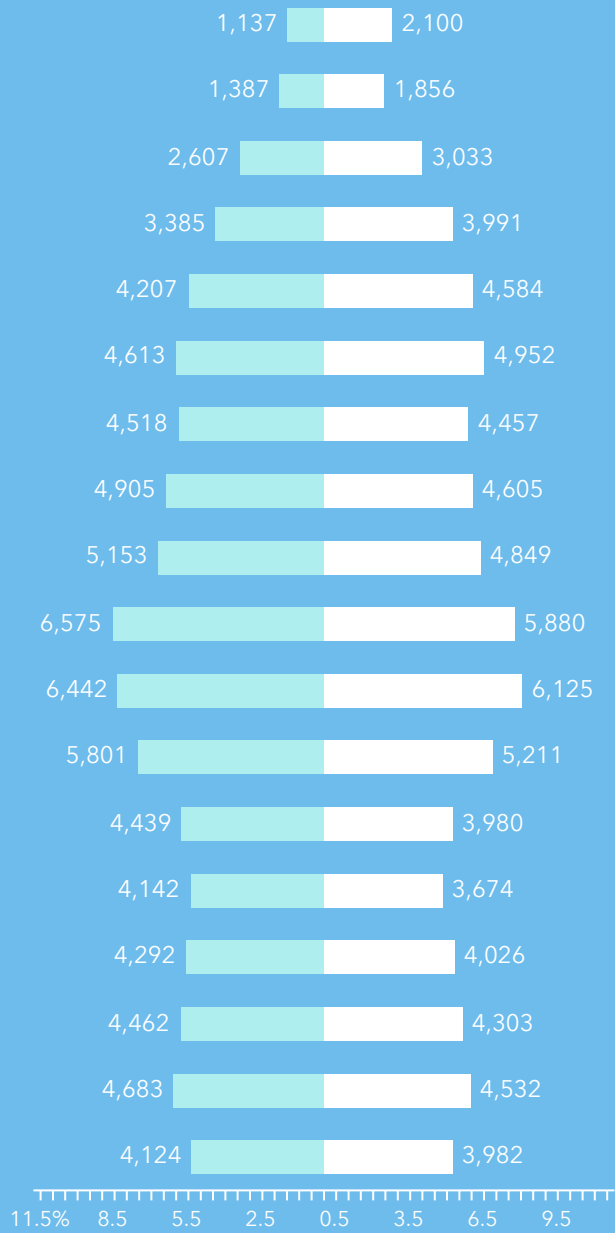
\$118,247
Median Household Income



Source: This infographic contains data provided by Esri (2024, 2029), Esri-U.S. BLS (2024), Esri-MRI-Simmons (2024).

© 2025 Esri

## Age Pyramid



The largest group: 2024 Males Age 40-44
The smallest group: 2024 Males Age 85+

## Annual Lifestyle Spending



## Tapestry segments

