

2025 TO 2026

SALFORDS  
AND  
SIDLOW  
PARISH  
COUNCIL

# Annual Report Overview

An in-depth review of our achievements



PREPARED BY

CLERK

Claire Baller



1. Introduction
2. Councillor Information
3. Councillor Attendance at meetings
4. Community Projects
5. Community Engagement
6. Salfords village hall
7. Planning/ Consultations
8. Planning Enforcement
9. Aviation
10. Neighbourhood Plan
11. Local Government Reorganisation
12. Community Governance Review
13. Civility and Respect Pledge
14. Finance Information
15. S&SPC end of year accounts
16. Salfords village hall end of year accounts
17. Summary Review



As we enter the final year of our four-year term, the Parish Council reflects on what we have delivered for the community over the past year.

We organised successful litter picks in Salfords and Sidlow, collecting over 50 bags of rubbish, and continue to support residents and Duke of Edinburgh students who volunteer independently. To support the environment, we planted additional daffodil bulbs to aid early pollination.

We have pushed for improved pavements and were pleased to see the footpath to the train station cleared, benefiting commuters and residents. We continue to support and maintain the station planters and were delighted to launch a book swap, creating a free community library.

Community engagement continues to grow, with over 50 residents attending monthly coffee mornings, well-attended wellbeing walks, and a thriving parent/carer toddler group. Our summer community garden remains a valued asset, providing fresh produce for residents. Thanks go to residents Elaine B, Carol H, Hazel W, Mary V, Keith V and Alison E, and train station manager Karen, for their ongoing contributions with these projects.

We hosted a range of popular events, including the Easter treasure hunt, VE Day celebrations, summer community event, Diwali celebrations, marathon refreshment stations, Sidlow fireworks, and Christmas lights switch-on. We also marked Village Hall Week with a community tabletop sale in partnership with Infinity Space to Grow.

Key projects this year included further village hall improvements, speed checks on Ironsbottom, installed bollards on West Avenue, and promoting a potential school street scheme. We contributed to consultations such as the proposed A23 bus corridor, the Community Governance Review, and Gatwick Airport's Route 4 plans.

We continue to review planning applications weekly and are engaging with developers proposing significant housing developments to the east and west of Salfords.

Our finances remain strong, with a 5% precept increase for 2026/27 supporting future projects, including the development of a Neighbourhood Plan. We also continue to apply for grants for local initiatives.

Councillors have signed the Civility and Respect Pledge, supporting a positive culture within local government.

We hope you find this annual report a helpful overview of our work and achievements during 2025/26.

# Councillor Information



Cllr Wayne Clark (Chair)  
Salfords Councillor  
CAGNE Parish Council Forum  
CPRE - R&B branch and Surrey Aviation Group  
Redhill Aerodrome Consultative Committee  
Salfords Village Hall Management Committee



Cllr Karen Dukes (Vice Chair)  
Salfords Councillor  
Association of Parish Council Aviation Group  
CAGNE Parish Council Forum  
Gatwick Area Conservation Campaign  
Plane Justice  
Salfords Village Hall Management Committee



Cllr Bob Barnes  
Sidlow Councillor  
GATCOM  
Norwood Hill Residents Association  
Plane Justice  
Sidlow Churchyard Committee  
Salfords Village Hall Management Committee



Cllr Jim Blackmore  
Salfords Councillor  
Redhill Aerodrome Consultative Committee  
Surrey Association of Local Councils  
Salfords Village Hall Management Committee



Cllr Caroline Clarke  
Salfords Councillor  
Community Rail Network  
Salfords Club Field Management Committee  
Salfords Train Station  
Salfords Village Hall Management Committee  
Woodhatch and Whitebushes Partnership



Cllr Paul Edwards  
Salfords Councillor  
Community Rail Network  
Salfords Club Field Management Committee  
Salfords Train Station Adoption Scheme  
Salfords Village Hall Management Committee



Cllr Mark Lodge  
Salfords Councillor  
Borough Council Standards Committee  
Surrey Association of Local Councils (Deputy)  
Salfords Village Hall Management Committee



Cllr Stephen Rolph  
Copsleigh/ West Avenue Councillor  
Association of Parish Council Aviation Group  
GATCOM  
Surrey Association of Local Councils  
SCC's Bus Forum Group  
Salfords Village Hall Management Committee

# Councillor Attendance



Councillors attendance at the Parish Council meetings for 2025/26 year are shown below: -

NAME	A	M	J	J	A	S	O	N	D	J	F	M
Cllr B Barnes	Present	Present	Present	Present	Present	Present	Present	Present	Present	Present	Present	Present
Cllr J Blackmore	Present	Apologies accepted	Present	Present	Present	Present	Present	Present	Present	Present	Present	Present
Cllr W Clark	Present	Present	Present	Present	Present	Present	Present	Present	Present	Present	Present	Present
Cllr C Clarke	Present	Present	Present	Present	Present	Apologies accepted	Present	Present	Present	Present	Present	Present
Cllr K Dukes	Present	Apologies accepted	Present	Present	Present	Apologies accepted	Present	Present	Present	Apologies accepted	Apologies accepted	Present
Cllr P Edwards	Present	Present	Present	Present	Present	Present	Present	Present	Present	Apologies accepted	Present	Present
Cllr M Lodge	Present	Present	Present	Present	Present	Apologies accepted	Present	Present	Present	Apologies accepted	Apologies accepted	Present
Cllr S Rolph	Present	Present	Present	Present	Present	Present	Present	Apologies accepted	Apologies accepted	Present	Present	Present

Present
Apologies accepted

The Parish Council meets on the second Monday of every month (except August).  
Councillor surgery/ planning forum is held the first Monday of the month.

The Parish Council has delivered several projects in the last year

- Arranging installation of the replacement bench at Maple Road (just outside the parish).
- Ensuring Picketts Lane is on SCC project list for 2026/27 for re-surfacing
- Introducing timed parking at Salfords shopping parade
- Funding SCC speed checks for the A217 by Ironsbottom and on Ironsbottom, Sidlow
- Funding installation of Bollards on West Avenue at the rear entrance of Salfords Primary school to provide safer crossing
- Providing information and influence on new SCC A23 bus corridor
- Submitted the request to install double yellow lines on the junction of Park View Road with Lodge Lane for the next Reigate and Banstead Parking review.
- Promoting Surrey Connect bus service which has arrived in Reigate and Banstead.
- Pressing for removal of the commercial vehicles on the road leading to Perrywood/ Monotype Social Club.
- Requesting proposal for consultation of having a school street around Salfords Primary School
- Funding, building and providing a Book swap at Salfords train station
- Funding and planting 2500 daffodil bulbs in Salfords and Sidlow
- Funding a trolley to enable residents help water some newly planted trees on the Petridgewood Common.
- Arranging two litter pick events in Salfords and promoting Sidlow litter pick.
- Provide floral displays with hanging baskets at the village hall, maintaining the planters at the train station and having plants on central reservation and by Salfords shops
- Offering free winter warmer essentials and fuel vouchers
- Donation station for the foodbanks at St Matthews church and Loveworks
- Support Sidlow Community Association plans to build a community hub and funding their planning application fee of £1,176



## Commercial Vehicles

The Parish Council continues to press for the removal of the commercial vehicles which have been stationed/ 'dumped' on the Byway Open to All Traffic (BOAT) leading to Perrywood/ Monotype Social Club. This is a complex issue regarding legal requirements for the type of road it is, whose jurisdiction it falls to and whether the benefits of removing the vehicles outweighs the costs (which are thousands of pounds).



## Speedchecks



Councillors met with the SCC Officer to make crossing the A217 by Ironsbottom safer. He advised that the road was not wide enough to have a crossing with a centre island which means any crossing would need to have traffic lights and cost circa £300,000.

The Parish council spent £500, from Community Infrastructure Levy (CIL) funds, for Surrey County Council to carry out speed monitoring surveys along Ironsbottom and on the A217 close to the junction. These checks were carried out in January/ February 2026 and the data shows that on average cars are travelling below the speed limit. Councillors have agreed to pursue to introduce a 30MPH speed limit on Ironsbottom, where the majority of the road has higher density of residential houses. Council supported the A217 road crossing petition created by a Sidlow resident. Her debate was heard at a SCC meeting in December 2025. Although no action or decision was made it was important that this topic was raised with cabinet members.

## New book swap store

Our new book swap store, built by Cllr Edwards with input from Cllr Clark, for the train station was launched in April and is a great asset for our community. Thank you to resident Elaine for keeping the books in order. We are now in the process of building another to be housed at the village hall.



## West Avenue Bollards

Councillors agreed to fund installing two bollards on the east side of West Avenue to prevent vehicles parking at a cost of - £2,250 using CIL funds. These were installed in February 2026

## Parking restrictions

Councillors have supported introducing timed parking at Salfords shopping parade to assist residents being able to park at the shops and use the parade to benefit the community facilities. We have also requested for double yellow lines to be introduced as part of the 2025/26 parking review, at the junction of Park View Road with Lodge Lane.





## Financial support

We offer free winter warmer essentials such as electric blankets, flasks, hats and scarfs together with fuel vouchers, which have all been provided by Surrey County Council, to any resident who may be struggling to keep warm or pay fuel bills.

## Improving our environment

The Council continues to provide floral displays with hanging baskets at the village hall, maintaining the planters at the train station and having plants on central reservation and by Salfords shops - this being funded by Reigate and Banstead

Our environment and consideration for biodiversity is important for the villages and we support the Blue Hearts scheme.



### Litter Picks in Salfords and Sidlow

We hold two litter pick events in Salfords each year – one in the Spring and one in the Autumn – these are always well attended with many residents of all ages helping to clear up.

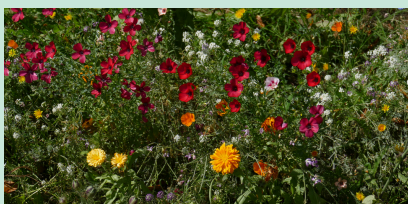
Sidlow residents carry out their annual litter pick in November, at the same time as they plant daffodil bulbs, and collect many bags of rubbish from the verges.

We thank all our residents who pick up litter on a regular basis. We are able to provide high vis jackets, litter grabbers and refuse bags if anyone wants to get involved.



### Daffodil planting

As part of our ongoing commitment to supporting biodiversity and the environment we planted 2500 daffodil bulbs (1000 in Salfords by Miller and Carter and 1500 on Ironsbottom in Sidlow at a cost of £316.



### Watering trees

Thank you to residents John and Danielle for agreeing to help to water some newly planted trees on the Petridgewood Common. Council purchased a trolley for £37.49 to enable them to carry the water to the site.

## A23 Bus corridor

The Parish Council was joined by Cllr Andy Lynch when we met SCC Officers from Transport Passenger Group and Highways to discuss the next stage of the consultation to introduce a new bus lane (24/7) from Honeycrock Lane to the Salbrook Road entrance. Councillors recognised the improvements with the scheme, having taken on feedback from our initial meeting and the public consultation. Councillors suggested hatching of areas for ease of cars crossing the A23 as this could be of benefit to aid traffic flow in rush hour/ busy times at Salbrook Road and Honeycrock Lane.

SCC are still reviewing and considering options going further south. A design scheme has been confirmed for the Chequers roundabout in Horley.

We now await dates for any future consultation and then implementation.



## Surrey Connect Bus Service

The Parish Council promotes Surrey Connect bus service which is finally available in Reigate and Banstead and will only cover areas which are currently not served by an existing bus service. Further info can be obtained here - [Surrey-connect](#) This is great service for our residents in rural areas such as Axes/ Picketts/ New House/ Lodge and Meath Green/ Lonesome Lane and for Sidlow roads off the A217.

## Sidlow Community Association

The Parish Council is fully supportive of Sidlow Community Association plans to build a community hub on Ironsbottom in Sidlow. Cllr Barnes meet with the association on a regular basis and there is ongoing dialogue between full council and the association with development of the neighbourhood plan and planning application for the hub.

The Parish Council provided grant funding to cover the full planning application costs for the Sidlow community hub of £1,176.



The Parish Council recognises that community cohesion is important for all our residents so we ensure we try to offer various monthly sessions to cater for everyone. We provide monthly wellbeing walks, coffee mornings and parent/ carer baby and toddler sessions and in the summer/ autumn the weekly community garden sessions.

Throughout the year we also celebrate many occasions and in 2025/26 offered the following: -

- Easter Extravaganza at Emmanuel church, Sidlow offering craft making, a treasure hunt and refreshments
- VE Day events in Salfords and Sidlow providing a cooked meal or BBQ and live entertainment
- Annual Community Fun Day at Salfords Social Club
- Reigate Marathon spectator station at Emmanuel Church
- Diwali celebration at Salfords village hall
- Spectator station at junction of Honeycrook Lane/ A23 to observe the Veteran Car Rally
- Sponsoring the Sidlow fireworks managed by Sidlow Community Association
- Christmas celebration including Salfords village light switch on
- Baby and Toddler table top sale



Plans for our annual community fun day at Salfords Social Club is underway and we are making other plans for the year including not forgetting Remembrance Sunday. Sidlow will also be holding a summer fair. We have also agreed to provide assistance to launch a new Men In Sheds in South Earlswood.

## Sidlow events



### Easter celebration

We held an Easter craft and treasure hunt event in the Emmanuel Church grounds in April 25. The event was attended by local care home and a few families costing the parish council £46.98 for refreshments and craft making equipment. We also held a spectator station from the church for Reigate marathon in September. This was appreciated by the marathon wardens and emergency services. A great spot to see all the runners pass by closely on two occasions.

### Spectator station for Reigate Marathon

Reigate Marathon spectator station  
In September the Parish Council offered free refreshments spectator station from Emmanuel Church, Sidlow to race marshals, spectators and ambulance crew for the Reigate marathon



## VE Day

Salfords VE Day celebration had over 50 people attend who were all served a fish and chip lunch followed by afternoon cream teas. There was live entertainment from Kelly and Salfords primary school attended to read poems and get involved. The event cost £385.95. £90 was also collected for the Royal British Legion.

250 residents attended the Sidlow event which was an outstanding success. The Redstone Community band, who were excellent, played longer than hoped. Salfords Pathfinder scouts helped with the games and the 17<sup>th</sup> Scout group assisted with the BBQ. The Parish Council contributed £325 for the event which was able to raise over £2,500 which will be put towards the new Sidlow community hub fund raising.

Most of our borough and county Councillors including the Mayor Elect were able to attend one if not both events.



## Salfords community fun day

Our annual community day at Salfords social club was a great success with many craft stalls and lots of entertainment for all the family. The event, including advertising, cost £420.47.



## Veteran car rally

In November, over thirty residents enjoyed free refreshments provided and served by the Parish Council while watching the veteran car rally at the corner of Honeycrook Lane. £11 was collected for our local charity.

## Diwali

In October we held a Diwali celebration at Salfords village hall. This was supported by the Asian Social Group who provided the decorations. We provided free refreshments and asian food for our residents to try. The event cost £151.30 which included a grant of £85 to Asian Social Group.



## Sidlow Fireworks

The Parish Council sponsored the Sidlow Community Association Sidlow pyromusical firework event by providing costs to cover advertising, TENs licence and toilet hire. Hundreds of residents enjoyed the evening watching fireworks to music whilst enjoying refreshments from the bar and BBQ. Parish Council costs were £333.50.

## Celebrating Christmas

The Christmas event, including switching on the Christmas lights, was great fun and thanks to AtoZ flute choir for entertaining the community with Christmas cheer. The event itself cost £47.33 so including installation of the lights at the hall and church it cost £832.33.



## Regular events

We held many community events for our residents including our regular weekly community garden sessions and monthly wellbeing walks, coffee mornings and parent/carer baby and toddler sessions

Refreshments for our regular monthly coffee mornings, play group and community garden have cost £261.40. We receive an annual grant of £250 from Surrey County Council Warm Hub scheme to assist with these.





Salfords village hall is a community building open to all residents who would like to use it for various occasions and events. We hire it out to local groups, care homes, individuals and charities who benefit from using the space for a variety of activities including badminton, martial arts, mental health meetings, Paracise, Zumba, ballroom dancing, afternoon tea dances, Indian dance, baby sing and sign and so much more.



The Parish Council also hosts our council surgeries and meetings, regular wellbeing walks leaving from the hall, coffee mornings, baby and toddler play group and community garden sessions from this venue. Many of our community events are also enjoyed in the building.

The aim of the Parish Council is to fund the hall through rental to cover cleaning, general maintenance such as gas, electric and fire checks, small repairs and utility bills and to obtaining grant funding for larger refurbishment works.

The Parish Council was successful in securing Reigate and Banstead Borough Council (R&BBC) strategic CIL funding of £48,454 to enable us to make further enhancements to the village hall. The improvements include:

- repairs to roof at left hand side - when viewed from the front – now complete
- Replacing the flat roof at the main entrance of the hall – now complete
- Improvements to main hall floor - now complete
- Wrapping all fascia and soffits to provide longevity and improve appearance
- To change the forecourt to provide on-site parking including provision of dropped kerb and disabled parking

## Hall floor

The main hall floor was repaired and refurbished in Summer 2025. Areas which were suffering from damp ingress were sealed, blocks removed and replaced to level the floor and the whole floor was then sanded, re-lined and re-sealed. The final costs were £9,149 which included securing spare blocks for a future repair, if required. We received £8,609 strategic CIL from R&BBC towards these costs.



## Roof repairs

The left-hand side vertical roof has been renovated and replaced to prevent ongoing water ingress at a cost of £3,475. At the same time the flat roof at the entrance was replaced for £2,900. The strategic CIL received from R&BBC covered these costs.

Emergency repair works to a leak in the main hall roof were carried out at a cost of £150 + VAT. There has been subsequent leaks in heavy rain fall so we have asked the roofing contractor to carry out a full inspection of the roof and provide detail for localised repairs, longevity of the roof and a solution for replacement/ covering to make thermally efficient whilst watertight.



## Forecourt changes

Councillors are reviewing tenders to select a Contractor to carry out works to renovate the front forecourt at Salfords village hall. This will include lifting all pavements, removing the wall and flower beds and laying the area to tarmac with clear demarcation for pathways. The proposal is to have one disabled space and two further car parking spaces with a dropped kerb to allow easy access to the site. We have selected the Contractor and will now make the full planning application submission to RBBC. We will also need to make the application to SCC for the dropped kerb.

## High level windows

The high level windows in the main hall were serviced and had Jackloc window restrictors installed. The service and repair costs were £1,428.89 paid for from Community Infrastructure Levy funds.

## Re-decoration works

We undertook a tidy up of paintwork in both halls at a cost for labour and materials of £980 paid for from Community Infrastructure Levy funds.

## Training

It is imperative that the council remains compliant when running the hall so the Clerk and Councillors attend various training as and when required. Over the last year the following has been undertaken: -

- Water Compliance and Legionella Control
- Hygiene level 2
- Health and safety awareness



## Communication Accessible

The village hall has been accredited as being Communication Accessible. The Clerk and Cllr Caroline Clarke have completed training on Communication Access which means they have the capability in supporting people with communication difficulties more effectively.

By committing to these standards to become communication Accessible, it enables people with communication difficulties to use our services with greater confidence.

## Emergency Planning

The Parish Council has agreed work with Surrey Local Resilience Forum (LRF) and National Consortium for Societal Resilience (NCSR) to be part of a pilot to use Salfords village hall as the development of a Community Emergency Information Hub (CEIH).

The proposal is that after initial guidance and discussion with the LRF, the community sets up and manages the hub with its own resources, as a place where the community can come together safely to coordinate activity and share information during the response to an incident or disruption. Involvement from official responders would be minimal, although the hub can be a useful contact point between the official and community side. The emergency hubs are distinct from emergency assistance centres and official rest centres, etc.

### Objectives and Roles

SCC/RBBC and emergency services aren't the only ones who respond to a disruption. Communities will very often self-organise quickly during an incident, drawing on local networks, skills and experience. A CEIH can provide a way to coordinate this activity in an organised and safe way, while acting as a contact point between the community and official responders.

Surrey is building on the idea that neighbours often support one another first, especially in the early stages of an incident — and that having a coordinated, welcoming space makes that support more effective. The CEIH has the objectives to: -

- Provide information and advice to the community.
- Focus the community response on using what is available to give the most help.
- Match peoples' needs with offers of help.
- Provide a safe and supportive gathering place.
- Connect the community with the local council and emergency services.

Official involvement in the hub is minimal. The location will be Salfords village hall and community members (does not have to be parish councillors) assume the roles needed to help the hub function. Individuals are not tasked to do anything by the local authority or other official responders. Official communications can help promote and share information on what the community is doing and where, and individuals will make up their own minds on whether to get involved or not.

The Hub consists essentially of a place and a container. The container will have community maps, stationery, a radio, a user guide and safety briefing (drafted by NCSR), and lanyards for Community Emergency Hub roles which should be worn when on duty.

Various key roles have been identified such as Hub Coordinator, Communications, Needs and Offers and Meet and greet. The roles can be filled by anyone who feels comfortable and competent – the individuals present will decide between themselves, and the role can be switched between individuals as the incident progresses. Assuming a role does not confer any legal powers onto the individual.

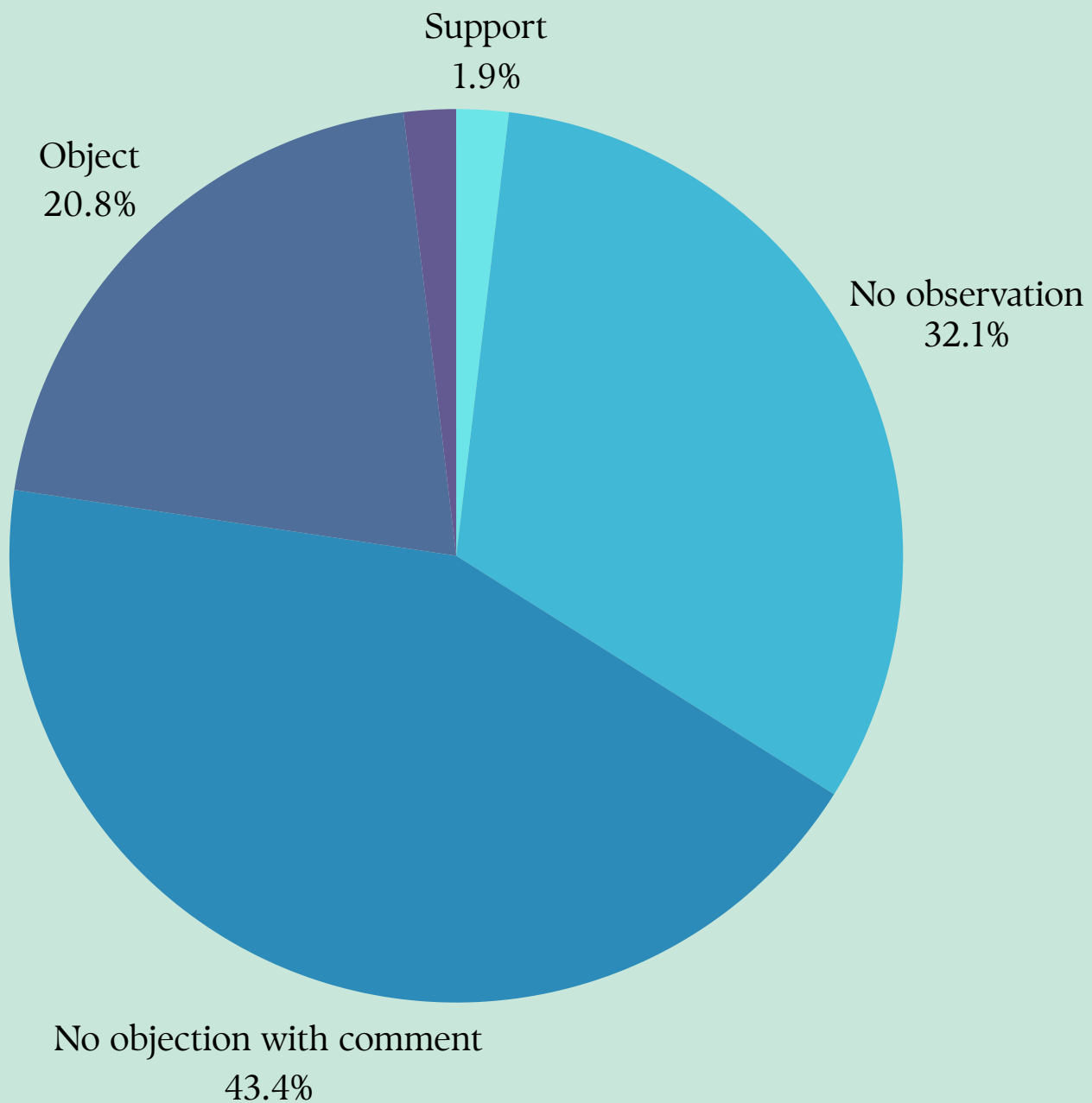
We will roll this out with our community through 2026.



## Planning

The Parish Council has responded to 53 planning applications in 2025/26

- Support - 1
- No observation - 17
- No objection with comment - 23
- Object - 11
- No comment - 1



## Consultations

The Parish Council has responded to the following consultations which have a direct impact on our residents: -

- Surrey Local Government Reorganisation
- R&BBC Greenspace strategy
- London Gatwick Airport Development Consent Order June 25 consultation
- A23 bus corridors
- Supported petition for A217 crossing
- Reigate and Banstead Community Governance Review – two phases
- 20mph speed limit around Salfords primary school
- Gatwick Airport Route 4 - closes 28/4/26



## Police station on Honeycrook Lane



Surrey Police has confirmed their intentions to have a new police station, with a front counter for residents, on the Perrywood Business Park on Honeycrook Lane. They advise the site will require some small revisions to ensure it is fit for purpose and hope to be open in Summer 2026

The Parish Council see this as a positive that the area will have a dedicated policing presence but have concerns: -

Impact on Honeycrook Lane and the surrounding roads.

How will the increase in police vehicles, staff cars, detainee transport, deliveries, and visitor traffic affect an already busy road?

Should residents expect frequent sirens and lights?

For those relying on public transport or walking, access may be difficult, as Honeycrook Lane's footpaths are uneven in places and not very pedestrian-friendly, limiting the ability of some residents to reach in-person police services.

Will any road improvements or traffic-calming measures be implemented to help mitigate these issues and improve safety for pedestrians and drivers?

## Grundon Waste site by Salfords train station

Councillors reviewed the large planning application for Development of waste transfer station and associated workshop, depot, wash bay, weighbridge, site offices, hardstanding, car and HGV parking, skip and container storage, drainage, landscaping, acoustic barrier fence and boundary treatment. We had no objection provided the operations do not have an unreasonable negative impact on the nearby houses and requested Grundon Waste ensure there is an acoustic fence barrier around the full site



## Crosswinds, Sidlow

Crosswinds continues to be monitored closely by the Parish Council to ensure the site is cleared for benefit of our residents and the countryside. In July 2025 we escalated the matter to Leader of SCC, Tim Oliver, expressing frustration at lack of action and re-course on the activity on this site. Soon after, in late July, there was a court hearing where the Judge granted an interim injunction order which would remain in effect until the matter progresses towards a final judgement, which in turn could be followed by the Court granting a final order. The Parish Council submitted representation for the final court hearing. This was held on 29 September 2025 where the Circuit Judge granted the injunction.

The order prohibits the importation, deposit and disposal of waste materials, and the operation of plant, machinery and vehicles associated with this unlawful use on the site and mandates the removal of the deposited waste materials and restoration of the land to agricultural use within 180 days of the Order. Should any of the defendants in these proceedings breach the terms of the permanent injunction, they may be found to be in contempt of court. This is a serious matter which attracts a fine, seizure of assets, and/or a term of imprisonment.

SCC officers continue to liaise with those named within the Order to ensure that its requirements, particularly those requiring the clearance/restoration of the site, are adhered to. Since the court hearing there has been additional fly tipping and SCC state they are engaged with the landowner for clearance of the whole site.



## Picketts Lane

The two plots on Picketts Lane are also closely monitored by the Parish Council. Residents are leading on this and have ongoing discussions directly with Reigate and Banstead Borough Council. They have engaged local MP Chris Coghlan, who with the Parish Council, is pressing for changes in the law on how Travellers legislation is considered in planning matters.

Picketts Lane Plot 2 was heard in the High Court in October 2025. The Judicial Review (JR) is made against the Council's decision to 'decline to determine' the recent application, made in May, to stay on the site.

R&BBC took the decision not to determine the application, and the applicants were seeking judicial review of this, on the basis that they should be allowed another hearing on the basis of changes in traveller legislation, policy etc.

There needs to be a written order by a judge to determine whether or not there is a case to be heard but as of going to print no date has been set. If permission is declined, the Order 'bites', and the travellers need to move off the site. If permission is granted, then it proceeds to a full public hearing at the high court between the barristers in front of the judge. It is understood refusal of the JR is the simplest and quickest route to securing compliance with the enforcement notices.



## New House Lane access track

The Parish Council was pleased to see an offender referred to as Mr Lewis, referred to as 'The Junk Guy' summoned to court in May 2025. This was for breaching an injunction for creating a track and dumping hard core on Green Belt fields on New House Lane. He entered into a consent order to clear all the rubble off the land and pay £500 to the Council. Counsel advised that is as good an outcome as could be hoped for.

The owner of the land leading from New House Lane arranged for turf originally scraped to the sides to be re-dragged over the land to reinstate the land. However the landowner could not do all the lane as further down it goes into other persons ownership. It was also expected that one part further into the land had toxic substances dumped on it. Unfortunately, the Environment Agency has not responded to R&BBC requests so until they advise what they want to do about it this area cannot be reinstated



## Various enforcement cases

Residents often raise concern about activity on a site or at a property which does not have appropriate planning. All these individual requests are sent to R&BBC as the Local Planning Authority (LPA) planning enforcement team, who subsequently investigate each case.

LPAs do not have a statutory duty to undertake enforcement. They are not required to take action for every breach, but should investigate.

Did you know that as of 25 April 2024, a universal 10-year time limit applies to most operational development, changes of use, and breaches of condition? There are some exceptions:

- deliberate concealment
- where action can be taken within 6 months of discovery
- Listed buildings have no time limit.

LPA will review each case on it's merit and consider: -

- Expediency: Enforcement is based on whether the breach causes significant planning harm, not merely that a breach occurred.
- Proportionality: Action must be proportionate to the breach; authorities are advised to negotiate before serving formal notices.

We request that residents continue to make us aware of activity which they believe does not have appropriate planning and we will work with you and R&BBC for action to be taken, if appropriate.

## Gatwick airport expansion

The decision on the Gatwick Airport Development Consent Order was authorised to enable Gatwick Airport's expansion plans for realignment and use of the existing standby runway.

The decision on the Gatwick Airport Development Consent Order was authorised to enable Gatwick Airport's expansion plans for realignment and use of the existing standby runway.

The development works would include north and south terminal redesign, new hotels; 55% more car parking, works to principal access road network serving Gatwick including road widening and roundabout updates between north and south terminals. There is no intention to change flight paths, but this is subject to airspace modernisation. It is proposed the core works would be developed and built between 2026-2031 with follow up construction works to 2039/40.

These developments would enable passenger numbers to increase to 80m p.a. (currently 46m p.a.), aircraft movements would increase from 265,000p.a. to 385,000 p.a. (35% increase). There will be an impact with carbon emissions, noise and transport congestion on roads and the Brighton train line. The Parish Council also has concern about water - sewage capacity, flood impact and water supply.

The Only option remaining to challenge this decision was a legal challenge through a Judicial Review (JR). GACC and Communities Against Gatwick Noise Emissions (CAGNE) both submitted their formal legal challenge to the Secretary of State (SOS) claiming that the SOS has acted unlawfully in granting the DCO in that she has failed to properly assess the full climate change impacts of Gatwick's expansion. Expansion will jeopardise climate change targets, while inflicting harm on local communities. GACC and CAGNE tackled different aspects of this climate challenge at the Judicial Review, which was held in January.

The Parish Council agreed to make a donation of £2,500 to both GACC and CAGNE recognising the development and expansion of Gatwick airport would have a huge impact on the parish in respect of Route 4, traffic, infrastructure, climate impact and noise. Councillors also agreed that if in the future further funding is required, the Parish Council will consider this if we have the funds and we were obtaining value for money.



## RACC

Gareth Owen was appointed as Chair of RACC after a long recruitment process



## Route 4

Gatwick Airports public consultation on Route 4 was launched in January 2026 with a closing date of April 2026. The Parish Council attended public consultation sessions and meetings with local aviation groups and parish councils to determine our response which would be the most beneficial long term to our residents. A final copy will be available on our website

## Parish Council approach

In June 2025 Councillors embarked on the start of the parish journey to create a neighborhood plan. Councillors received specialist training from Planning Consultant Steve Tilbury, who provided guidance and support on how to approach the development of the plan, understanding costs, hurdles and benefits of the process.



## Policy only plan

Although the government has withdrawn funding to produce a plan which could cost up to £10,000, Councillors agreed to pursue the creation of a principle/ policy only plan (not recommending allocation of sites for development) ensuring the plan is cohesive, stringent and will help shape future development for the villages.

Councillors have met with Reigate and Banstead Borough Council (R&BBC) who support us on the process and are important and integral to this to be a success. Government targets for housing mean Reigate and Banstead Borough Council has to build 1285 houses per annum. That is development size of 13 Westvale Parks in 15 years.

We know our villages will be targeted for development, having already received two scoping documents for land east and west of Salfords. Meanwhile, R&BBC are currently undertaking a Green Belt review as requested by central government. R&BBC confirmed there are also strategic flood assessments/ SCC transport assessments underway. The Development Management Plan (DMP) includes where growth areas for work are.

The Parish Council wants to protect Salfords and Sidlow to ensure that any development in our community ensures it enhances it as best we can and the accompanying infrastructure and improvements are provided.

## Public consultation

In October the Parish Council held various consultation sessions to obtain resident feedback. These were well attended with over 200 residents completing questionnaires. Councillors have reviewed the resident feedback and are writing a set of policies concentrating on: -

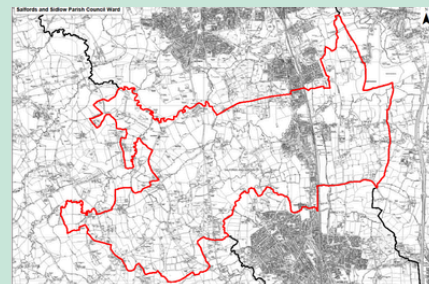
- Wildlife corridors
- Character of Sidlow
- Community -
- Urban/ rural density
- Play provision
- Industrial sites
- Showman sites
- Transport

We will also be recruiting an external specialist to write a design code for the parish.

Once completed we will work with R&BBC and our Planning Advisor to finalise the draft plan before we hold another 6-week consultation with our residents.

## Designated area

The first official step which is submission and approval for the designated area of the plan (whole of the Salfords and Sidlow parish) is complete.



# Local Government Reorganisation



The government confirmed plans for Surrey to have two Strategic Authorities — led by an elected Mayor. This means that from April 2027 there will be two new unitary councils – East Surrey and West Surrey when at this time Surrey County Council and all the Borough/ District Councils no longer exist. To do this, Surrey must first reorganise into unitary councils, which combine county and existing district and borough (12 councils) services into a single level of government.



## West Surrey

Guildford Borough Council  
Runnymede Borough Council  
Spelthorne Borough Council  
Surrey Heath Borough Council  
Waverley Borough Council  
Woking Borough Council

## East Surrey

Elmbridge Borough Council  
Epsom and Ewell Borough Council  
Mole Valley District Council  
Reigate and Banstead Borough Council  
Tandridge District Council

## What this means

This means the current two-tier system – where county, and district and borough councils share responsibilities – will be replaced by a simpler and more efficient structure. In a unitary model, one council is responsible for all services in an area. Government believes that simplifying local government also ensures a strong foundation for devolution.

## The new structure

From April 2027, Surrey County Council and the 11 District and Borough Councils in Surrey will be dissolved. To support the transition:

- Elections to the new shadow authorities will take place in May 2026.
- These elected members will help set up the new councils and operate in a “shadow” capacity until vesting day (April 2027).
- On 31 March 2027, the 12 existing councils will be dissolved.
- From 1 April 2027 (vesting day), the new unitary councils will officially take over.

There should be no immediate changes to how residents access services. Council offices and community spaces will remain open, and services will continue as usual.

Currently there are 81 Surrey County Councillors and 45 councillors for just Reigate and Banstead Borough Council (R&BBC) with R&BBC divided into 15 wards, with each ward electing three councillors.

# Local Government Reorganisation



Government has said that this is a once in a generation reform which will see stronger local councils in charge of all local services, equipped to drive economic growth, improve local public services, and lead and empower their communities – ultimately it will help improve living standards.

Currently there are 81 Surrey County Councillors and 45 councillors for just Reigate and Banstead Borough Council (R&BBC) with R&BBC divided into 15 wards, with each ward electing three councillors.

The new East and West Surrey unitary authorities will each have 20 councillors, resulting in a total of 40 councillors for the entirety of Surrey. This will see a huge reduction in local representation for residents.

As part of this process R&BBC has launched a Community Governance Review exploring the option giving residents in the borough to consider becoming parished as Salfords and Sidlow and Horley already are.



Reigate & Banstead Borough Council (R&BBC) consulted on recommendations which could see all households in the borough become part of a parish or town council. The recommendations come from suggestions received earlier in 2025 when R&BBC first asked local organisations and residents for their views on removing or making changes to existing parish or town councils in the borough or creating new ones.

Currently, there are just two areas in Reigate & Banstead with this most localised tier of government – Horley Town Council and Salfords & Sidlow Parish Council.



In our first submission response we made it clear it was imperative to understand that before the Parish Council could commit to any amendments to our existing parish boundary, we would need to fully understand the views of our existing residents, and those of the residents in this extended community, associated risks including financial / asset transfers. The recommendations in the second consultation proposed the expansion of Salfords & Sidlow Parish Council to include South Earlswood and Whitebushes which would mean having an electorate figure of 6593 (from 3014) and increasing from 8 to 14 councillors. Councillors were especially concerned that the new proposals reduced the number of six Councillors to four to represent the Salfords ward.

Parish Council objected to the consultation urging R&BBC to retain the existing parish boundary. Reasons cited include considering:

- the failure to engage with the Parish Council's initial submission,
- the lack of consultation with current or proposed-new residents,
- the absence of transparent financial, governance and representation analysis,
- the proposed reduction in councillor numbers contrary to NALC guidance,
- the heightened risk of rural marginalisation, and
- the many unanswered questions around impacts and risks,

Councillors were pleased that the final recommendations included to keep Salfords and Sidlow Parish as it is.

There were recommendations for ward changes for Horley Town Council and creation of new Town Councils for Banstead and the villages, Redhill (including Whitebushes and South Earlswood) and Reigate.

The responsibility for implementation will fall with jurisdiction of the new unitary authority with plans for elections in May 2027.



## Councillors sign up to the Civility and Respect Pledge

The Society of Local Clerks ( SLCC), National Association of Local Councils (NALC), and One Voice Wales (OVW) believe now is the time to put civility and respect at the top of the agenda and start a culture change for the local council sector.



Councillors have signed the Pledge, agreeing that it will treat councillors, clerks, employees, members of the public, and representatives of partner organisations and volunteers with civility and respect in their roles, and that it:

- has put in place a training programme for councillors and staff

We

- have signed up to the Code of Conduct for councillors – We have
- have good governance arrangements in place including staff contracts and a Dignity at Work policy – we have
- will seek professional help at early stages should civility and respect issues arise – we would
- will commit to calling out bullying and harassment if and when it happens - we would
- will continue to learn from best practice in the sector and aspire to being a role model / champion council e.g., via Local Council Award Scheme – we have and are used as a role model
- supports the continued lobbying for change in legislation to support the civility and respect, including sanctions for elected members where appropriate

## Setting the precept

In November 2025 Salfords and Sidlow Parish Council reviewed the budget for the 2026/27 financial year and in December Councillors agreed to increase the precept for 2026/27 by 5% to £51,447.06 to cover all the costs for running the Parish Council which have increased.

This means a Band D average household pays £34.83 per annum.

Reasons being: -

- This would cover all the costs for running the Parish Council and provide a small amount of additional funding for reserves, assuming the hall continues to maintain a one third contribution for the Clerks salary
- It is a financial increase on Band D equivalent of £1.77 per annum = 15p per month
- Plans for Local Government Review and Community Governance Review are unknown so there are many uncertainties
- Our existing reserves are allocated for specific purposes including provision of a neighbourhood plan.
- The figure continues to be well below the National Average figure for Town and Parish Councils.



## Budget control

Sensible management of our budgets over recent years has ensured that the Council has contributed to our current sound financial position. However, inflation impacts Council costs, and the financial environment remains challenging. With the new unitary authority development and as we are closest to the community, we recognise the importance of always seeking best value on behalf of residents. We are continuing to build up our general reserves and earmarked funds to allow us to make consistent progress towards achieving the objectives in our village plan, in addition to ensuring the future maintenance of and investment in Salfords village hall and services to support the local community and promote well-being and social cohesion.



## Strategic Grant

We have been successful in securing grant funding to help us achieve some of our projects including receiving £48,454 from R&BBC Strategic CIL to make renovations to Salfords village hall consisting of repairs to the side and flat roofs, wrapping of fascia and soffits, renovation of wooden floor, and provision of an on-site disabled parking on the forecourt with provision of a dropped kerb.

## Grant support

### Emmanuel Church

The Parish Council continues to support Emmanuel Church and has made provision for a grant sum of £2,000, towards its grounds' maintenance budget for 2026/27.



### Gatwick Airport DCO Judicial Review

Donation of £2,500 were made to both GACC and CAGNE to support them taking their Judicial Reviews against the Gatwick Airport Development Consent Order (DCO) decision. Councillors recognise the development and expansion of Gatwick airport will have a huge impact on the parish in respect of Route 4, traffic, infrastructure, climate impact and noise. The court hearing took place in January and we now await the judge's decision.

## Local grants

We also offer grant funding opportunities to community groups (subject to eligibility) through our Council Grants Scheme. In 2025/26 we donated

- £85 to Surrey Asian Group for supporting our Diwali event
- £250 to AEF
- £250 to GACC
- £1,176 – Sidlow Community Association for planning application fee for new community event
- £500 to Sidlow Community Association for assistance with purchase of commercial BBQ

## Community Infrastructure Levy (CIL) Funding

The Parish Council received £5,831.81 CIL funding in 2025/26, spent £5,650.89 leaving a carry forward balance to 2026/27 of £16,457.94.

29/10/2025	New tables x 6 for Salfords village hall	£492.00
18/11/2025	Speed surveys on Ironsbottom, Sidlow	£500.00
25/11/2025	Main hall high level window repairs and new catches	£1,428.89
01/12/2025	New bollards for West Avenue	£2,250.00
24/03/2025	Re-decoration works to main and rear hall	£980.00
	<b>Total amount of CIL spending the end of the reported year</b>	<b>£5,650.89</b>

## Members Allowance Scheme 2025/26

The Members' Allowances Scheme provides a payment of a Basic Allowance of £200 to every Councillor for the year. In financial year 2025/26 Cllr S Rolph received the allowance of £200.

# S&SPC End of Year Accounts



## Salfords and Sidlow Parish Council

To effectively manage the council and village hall we run to sets of accounts which are combined for financial year end. Below are the accounts for the Parish Council



### SALFORDS & SIDLOW PARISH COUNCIL Accounts to 31 March 2026

RECEIPTS	April 25 to March 2026			FULL YEAR
	Actual	Budget	YTD %	2024/25
	48,997.20	48,997.20	100%	
Precept	48,704.00	48,700.00	100%	46,664.00
Grants	9,680.08	6,005.28	161%	26,180.00
CIL Grant	536.00	750.00	71%	15,473.77
Advertising in newsletter	11,088.01	12,000.00	92%	536.00
TV from SVH for Clerks % of salary, tax & NI	43.00	50.00	86%	11,767.84
General	40,000.00	40,000.00	100%	229.17
CCLA Transfer	7,730.42	8,000.00	97%	-
VAT Refund				8,553.53
<b>Total Income</b>	<b>166,778.71</b>	<b>164,502.48</b>	<b>101%</b>	<b>109,404.31</b>
<b>PAYMENTS</b>				
<b>General Administration</b>				
Administration	3,927.25	4,000.00	98%	3,423.28
Postage	0.00	50.00	0%	17.85
Broadband and telephone	671.51	550.00	122%	408.39
Travel	79.80	100.00	80%	32.85
Members Allowances	200.00	200.00	100%	200.00
S142 - Newsletter	5,562.59	8,000.00	70%	7,544.94
T raining	220.00	400.00	55%	242.68
<b>Total General Administration</b>	<b>10,661.15</b>	<b>13,300.00</b>	<b>80%</b>	<b>11,869.99</b>
<b>Salary Payments</b>				
Salary	20,256.46	23,000.00	88%	21,864.71
Pension contributions	1,514.01	2,000.00	76%	1,819.60
Inland Revenue	11,934.74	12,000.00	99%	10,670.21
<b>Total Salaries</b>	<b>33,705.21</b>	<b>37,000.00</b>	<b>91%</b>	<b>34,354.52</b>
<b>Other</b>				
Professional Services	670.00	850.00	79%	770.00
Rents/ Meetings	3,740.00	3,790.00	99%	3,790.00
Refund VAT to Salfords village hall	5,928.09	6,000.00	99%	6,717.91
S214 Emmanuel church	1,750.00	1,750.00	100%	1,500.00
Grants / Wellbeing	1,785.97	2,000.00	89%	1,883.35
S143 Payments Grants	1,556.46	1,550.00	100%	1,408.36
Community Grant & Crisis Scheme (Ringfenced £5,000)	1,471.01	2,000.00	74%	1,656.22
Election Costs - Ringfenced £3,000	0.00	0.00	0%	-
Planning/ Aviation Dev. - Ringfenced £20,000	6,821.00	7,000.00	97%	750.00
Salfords Village Hall	15,000.00	15,000.00	100%	26,003.32
Parish Council office - Ringfenced £9,000	1,521.41	2,500.00	61%	1,093.13
Parish Council Centre - Ringfenced £10,000	0.00	0.00	0%	-
Community Recreation - Ringfenced £5,000	870.00	2,000.00	44%	1,901.51
Keeping Parish Tidy - Ringfenced £2,000	0.00	1,000.00	0%	1,017.01
Environmental Enhancements- Ringfenced £2,000	459.07	3,000.00	15%	2,913.26
Train Station Adoption (£928.65)	209.79	500.00	42%	25.00
CIL Payments-(R/F £20,306.21)	5,650.89	5,000.00	113%	-
CCLA bank transfer	80,000.00	80,000.00	100%	35,000.00
VAT Paid out	1,439.98	2,000.00	72%	2,281.19
	<u>128,873.67</u>	<u>135,940.00</u>		
<b>Total Payments</b>	<b>173,240.03</b>	<b>186,240.00</b>	93%	134,964.76
<b>Receipts less payments</b>	<b>-6,461.32</b>	<b>-21,737.52</b>		<b>-25,530.45</b>
<b>Balances B/F</b>				
General Account	13,938.69			20,400.01
Ringfenced Funds (£57,066.79)				
CCLA Reserves	106,500.23			63,185.27
<b>BALANCE</b>	<b>120,438.92</b>			<b>83,585.28</b>

# SVH End of Year Accounts



## Salfords Village Hall

The accounts for the village hall are shown below. A third of the Clerks time is funded from the village hall covering day to day bookings, management and ongoing maintenance.



### SALFORDS VILLAGE HALL

#### Receipts and Payments For the month ending 31 March 2026

Receipts	2025/26	Budget	YTD %	2024/25	Payments	2025/26	Budget	YTD%	2024/25
Badminton	52.00	7,000.00	1%	7,173.00	30% Clerk salary	-	12,000.00	0%	11,737.84
Church	-	50.00	0%	289.00	<b>Total Gen. Exp. &amp; Maint.</b>				
Keep fit	-	2,100.00	0%	2,088.50	Cleaning	-	4,500.00	0%	4022.82
Baby Group	-	3,500.00	0%	3,509.25	External Maint	-	2,000.00	0%	1,709.48
Martial Arts	-	1,300.00	0%	1,320.00	Internal Maint	-	2,000.00	0%	31,770.62
Dance practice	-	3,500.00	0%	3,648.00	Electrical maintenance	-	1,500.00	0%	2,459.64
Rear Hall	-	2,500.00	0%	2,227.70	General expenditure	-	5 00.00	0%	427.81
Rear Hall Parties	-	500.00	0%	291.00	<b>Total Gen. Exp. &amp; Maint.</b>	-	10,500.00	0%	40,390.37
Main Hall Parties	-	5,000.00	0%	7,333.40	Admin. expenses	-	1 00.00	0%	
General/ Grant/ TV	-	17,000.00	0%	24,380.00	Gas	-	9,000.00	0%	8,687.67
					Electric	-	4,000.00	0%	3,567.69
					Water Rates	-	2 00.00	0%	112.00
					Total Utilities	-	13,200.00	0%	12,367.36
<b>Total Receipts</b>	<b>52.00</b>	<b>42,450.00</b>	<b>0%</b>	<b>52,259.85</b>	Total hall running costs	-	35,700.00	0%	64,525.57
					Refunds (£550)	-	-		200.00
VAT refund		9,000.00	0%	6,717.91	VAT paid	-	9,000.00	0%	8,798.63
Bank Interest				-					
Gas refund				0					
<b>Total Income</b>	<b>52.00</b>	<b>51,450.00</b>	<b>0%</b>	<b>58,977.76</b>	<b>Total expenditure</b>	<b>-</b>	<b>44,700.00</b>	<b>0%</b>	<b>75,324.20</b>
					<b>Balances</b>				
					Net to bank account	<b>52.00</b>			
					Cash				
					Premier A/C	6.35			6.19
					Current A/C	4,168.36			18,208.02
Balance b/f	22,092.86			16,435.63	Balance C/F	<b>4,174.71</b>			18,214.21



2025/26 was a productive year with many of our projects delivered and others started or identified to be delivered in this council term. We are excited as we enter our last year, with the eight councillors who are elected, to serve the residents of Salfords and Sidlow.

As we reflect on achievements in the council year 2025/26, Councillors recognise there will be tremendous upheaval over the coming months with the creation of new unitary authorities and disbandment of Reigate and Banstead Borough Council and Surrey County Council planned for April 2027.

Over the next 12 months we plan to hold community family events in both Salfords and Sidlow, with summer parties, celebrating Diwali, reflection on Remembrance Sunday and expressing joy at Christmas. We will continue to organise and run our free monthly community coffee morning, walks and paper/ baby toddler groups and weekly summer garden sessions.

With changes in the National Planning Policy Framework (NPPF) being expected to be finalised in Summer 2026, and as we continue to meet with developers who propose to build housing on land east and west of Salfords, the progression on our Neighbourhood Plan is more important than ever. We will robustly engage with planning experts to guide us and have regular discussion with Reigate and Banstead Borough Council (R&BBC) to ensure the policies we write are in line with theirs to ensure they would be authorised by a Planning Inspector, when we reach that stage.

Significant improvements to the village hall will progress to ensure we maintain this important community asset for everyone.

We will be entering a transition period but we will do our utmost to ensure that we will still be able to represent our residents in a coherent and timely manner and will work with Surrey Association of Local Councils (SALC), who is working hard, to ensure local voices will be heard.

Parish Council elections will be held in May 2027 so we will do our very best over the next 12 months to continue to develop our plans to make Salfords and Sidlow the villages we want to live, work and enjoy.

If you would like to get involved in any project we work on or are interested in becoming a Councillor at the May 2027 elections, please let us know.

Clerk and Responsible Finance Officer  
Claire Baller  
Clerk@salfordsandsidlowpc.org.uk  
01737 780339  
www.salfordsandsidlowpc.org.uk

2025 TO 2026

SALFORDS  
AND  
SIDLOW  
PARISH  
COUNCIL

# Annual Report Back Page



## CONTACT DETAILS

Clerk and Responsible Finance Officer

Claire Baller

[Clerk@salfordsandsidlowpc.org.uk](mailto:Clerk@salfordsandsidlowpc.org.uk)

01737 780339

[www.salfordsandsidlowpc.org.uk](http://www.salfordsandsidlowpc.org.uk)