



EXCELLENCE IN
TEMPERATURE
SENSING

CAPABILITIES

CORE PRODUCTS



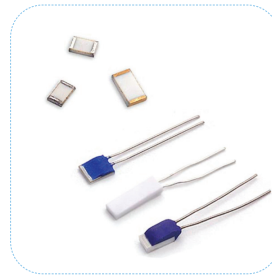
**Custom
Temperature Sensing
Probe Assemblies**



**High Precision
Thermistors**



**High Temperature
Sensing Elements**



**Resistance
Temperature
Detectors**



SMT and Thru Hole

PROBE ASSEMBLY MATERIAL

(partial list)

Wire and Cable

Two Conductor

Jacketed (shielded and unshielded)

Single Conductor

Ribbon

Twisted Pair

Housings

Stainless Steel

Copper

Aluminum

Brass

Plastic/Vinyl

Terminals and Connectors

TE

Molex

Aptiv/Delphi

JST

Conec

PRODUCT TEMPERATURE RANGES

Thermistors: -70°C to +300°C

RTDs: -200°C to +1000°C

Probe Assemblies: Dependent upon design



1440 S. State College Boulevard, Suite 2E, Anaheim, CA 92806 USA
(714) 860-4121 | sales@ei-sensor.com | www.ei-sensor.com



EXCELLENCE IN
TEMPERATURE
SENSING

CAPABILITIES

DESIGN

MANUFACTURING

LOGISTICS

Flexible Solutions Approach	Part Number Breadth & Depth	Special Bar Coding
Hands on Project Management	Process Control	Special Labeling
Range of Solutions	Quality Control	Safety Stock Program
Moisture Resistant Designs	Traveler System	Product/Inventory Staging
Prototyping	Manufactures to ISO Procedures	Dedicated Inventory
Custom RT Curves	Small and large lot sizes	Design Tracking

INDUSTRIES



HVAC/Building Automation



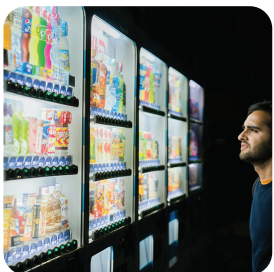
Pool & Spa



Medical Electronics



Industrial Controls



Refrigeration



Consumer/White Goods



Food Handling/Processing



Energy
Renewable/Non-Renewable



1440 S. State College Boulevard, Suite 2E, Anaheim, CA 92806 USA
(714) 860-4121 | sales@ei-sensor.com | www.ei-sensor.com