



Newsletter

Barkingside

Monthly Newsletter

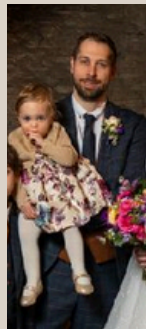
January 2026



Staff of the month is...

Massive appreciation towards all of our staff here at **Barkingside!** You all put so much work in this month and **have completed your annual first aid. Well done to each & every one of you!**

Parent of the month is...



A huge thank you to **James**, who was our Santa on our Christmas performance night!

Term Dates 2026

TERM - Monday 5th January

HALF TERM: Monday 16th February - Friday 20th February

EASTER BREAK: Monday 30th March - Friday 10th April

INSET DAY: Thursday 7th May 2026

Nursery reopens for all children on Monday 5th January

Parent Partnership

At New Birth Day Nursery, we warmly invite parents to be active partners in their children's learning journey. We encourage families to visit and share a story, teach a special skill, or help us celebrate important cultural events. Your experiences, talents, and traditions greatly add to what we offer and help the children learn about the world in a fun and real way.

A big thank you to all the parents who came to our Christmas nativity performance!

If you're interested in joining future sessions or sharing something with the children, please reach out to the manager, we would love to have you involved. Also, feel free to leave any feedback or suggestions on Baby's Days.

Parent Partnership

Dates for your diary

Reminders

Payment of fees are due on the **1st of each month**, if you are paying your nursery fee through childcare vouchers or tax-free childcare this must be processed by the 24th of each month in order to hit the nursery account by or on the 1st of each month. Please note that any payments paid after the **1st of each month** will result in a **£20 daily charge**.

Monday 5th January

We trust that everyone enjoyed a delightful Christmas and New Year! We hope your little ones are prepared to return to Nursery.

Considering they have had a break, we suggest gradually reintroducing them to their routines. This approach can help ease tantrums, irritability, and undesirable behaviour.

Weaning your baby Webinar

Every month, Early Start hosts a webinar for parents who are eager to learn how to wean their baby. It's a 45-minute session where you'll learn a variety of helpful tips and guidance. Don't worry if you can't make it this month, the webinars are held regularly every month.

- **[Click Here!](#)**



What Are We Learning About This Month?

LITTLE ANGELS

This month, the little ones will embark on an exploration of nursery rhymes through different textures, sensations, appearances, and more! Here are some ways you can get involved at home:

- Watch short clips that bring nursery rhymes to life
- Participate in cooking activities inspired by nursery themes
- Read books that incorporate popular nursery rhymes

BUSY ANGELS

This month, our toddlers will explore the world of Arctic animals, embarking on an exciting journey to learn about polar bears, seals, and other creatures that inhabit this icy realm! Here are some fun ways you can participate at home:

- Watch short clips about Arctic wildlife
- Take your little ones on nature walks to observe animals in your area
- Read books that feature Arctic animals and their habitats

BRIGHT ANGELS

This month, our pre-schoolers will explore Arctic animals, the cold weather they experience, and the frozen habitats they live in. They'll learn all about polar bears, seals, and other creatures that thrive in icy places! Here are some fun ways you can participate at home:

- Watch short videos about Arctic life and cold habitats
- Take nature walks to spot animals nearby
- Read stories that feature Arctic animals and their snowy homes



Important Information

HARVEST

Friendly Reminder: Harvest Item Collection

We kindly want to remind everyone that we are still gathering our harvest items until early January.

- A list of desired items has been uploaded to Baby's Days.

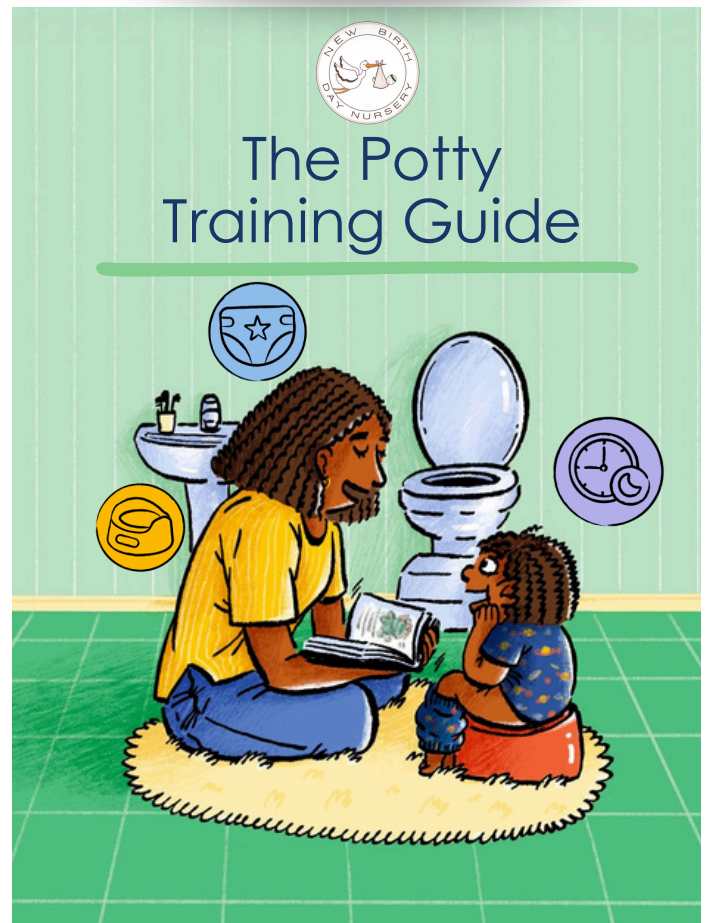
If you have any further questions, please don't hesitate to reach out to the manager. Thank you!



POTTY TRAINING GUIDE

For parents navigating the journey of potty training their toddlers, we have uploaded a comprehensive guide on Baby's Days. - alternatively, please **click here!**

This resource is filled with essential facts and helpful tips to support you and your little one as you embark on this important milestone.



Please be aware: All essential information shared in the newsletter will also be posted on Baby's Day's. Keep an eye out, as you won't want to miss any important dates/ information



Parent Referral Programme

Love our nursery? Shout about it!

When you refer a family and they join, **YOU** earn **£50 credit** towards your nursery fees.

But it doesn't stop there...

1 Family = £50 credit

3 Families = Extra £50 bonus (that's £200 total!)

There's no limit — the more you share, the more you save.
Just ask your friend to mention your name when they sign up.

Let's grow our nursery family together!

Rewards are added once the referred child has been enrolled for 3 months.

Applies to new families only (not siblings).

One reward per new family referred.

Credits are non-refundable and applied to nursery fees only.

DM us or speak to your nursery manager for more info



New Birth Day Nursery Finances

FINANCE EMAIL

Please direct all financial enquires, emergency childcare requests, term-dates, 9months+, 2 or 3-year-old funding requests, student finance top-up payments, invoice queries, tax-free codes and much more to newbirth_finance@yahoo.com

UNIVERSAL 15HRS FUNDING

15 Hours Funded Universal Childcare for 3- and 4-Year Olds is available to all 3-year-olds a term after their 3rd birthday, there is no need to apply!

<https://www.gov.uk/help-with-childcare-costs/free-childcare-and-education-for-3-to-4-year-olds>

FUNDING IF YOU ARE WORKING

Check if you're entitled to childcare funding if you are working

<https://www.gov.uk/check-eligible-free-childcare-if-youre-working>

EMERGENCY CHILDCARE HOURS

We adhere to legal staff-to-children ratios and book in agency staff to fill the ratios if we won't have enough cover for the day. Therefore, we kindly request that you provide as much notice as possible if emergency childcare is required. Emergency childcare is any day/s outside of your child's contracted days and can be pre-booked by emailing the finance team and paying the emergency rate of £100 via cash or bank transfer. This amount is non-refundable should you change your mind.

In the event of a same day emergency, please contact the nursery as early as possible and ask to speak with the nursery manager or directors who will confirm if your request can be accommodated. Payment is needed before using our services.



New Birth Day Nursery Finances

RECONFIRM YOUR FUNDING ELIGIBILITY EVERY 3 MONTHS

Parents will have been alerted by HMRC to reconfirm their eligibility by logging into their childcare account. The following outlines the timeline of reconfirmation

REMINDERS THAT PARENTS RECEIVE

4 weeks (28 days) before validity end date

Parent receives an email reminding them to reconfirm.

2 weeks before validity end date

Parent receives an email reminding them to reconfirm (if they haven't reconfirmed yet)

DAY AFTER VALIDITY END DATE

Parents received an email telling them that their eligibility has lapsed, and they are no longer eligible for 30 hours. However, they will keep with childcare place until the grace period expires (the end of term)

HM Government | **Childcare Choices**

HELP PAYING FOR CHILDCARE

MONEY TOWARDS CHILDCARE

Any **one** of the following schemes...

Age 0-11 <small>Or 16 if disabled</small>	Age 0-16	Age 0-15 <small>Or 16 if disabled</small>
Get up to £2000 per child For working families	Claim back up to 85% of costs For working families	Claim back up to 70% of costs For working families
TAX-FREE CHILDCARE	UNIVERSAL CREDIT	TAX CREDITS

... can be used with

FREE HOURS OF CHILDCARE

Age 2	Age 3&4	Age 3&4
For families getting certain government support	For all families	For working families
15 HOURS FREE CHILDCARE	15 HOURS FREE CHILDCARE	30 HOURS FREE CHILDCARE

AVAILABLE IN UK

Important Notices

FEEDBACK

We truly value your thoughts and feedback, as it helps us continue improving the care and experiences we provide for your children.

You can share your comments, suggestions, or feedback in either of the following ways:

- 1) Complete our online feedback form:
[Click Here!](#)
- 2) Email the setting directly with anything you would like to share.
Your voice matters, and we appreciate every contribution.

PARACETAMOL

If your child has been given Calpol/paracetamol at home or on the way to nursery, please inform us at drop-off and let us know the exact time it was administered.

At the nursery, we only give Calpol to children who have a raised temperature, and we will always seek permission from parents before administering any dose. Your cooperation helps us keep all children safe and ensures we can monitor their health appropriately throughout the day.

REVIEW US:

Thank you for choosing New Birth as your childcare provider! We hope you and your child have had a pleasant experience. Please take a moment to review our nursery to help us promote our services to other families:



IMPORTANT PARENT NOTICE

Breakfast starts at 8:00am to 8.30 if you wish for your child to have breakfast please arrive before 8.20am. Do not request breakfast after 8.30am as it gets packed away and all staff go into ratio with the children. Children should arrive by 9.30am to avoid disruption to the routine if children continue to attend nursery late, they will be refused at the door. Please contact the nursery by 9.15am to inform us of any absences.



To help us plan effectively we are asking parents to let us know of any wow moments!

Personal Details Update Form:

Personal Details Updates: We now have a USEFUL FORMS page on our website for parents to make any changes to their personal details.

<https://www.newbirthnursery.com/useful-forms>

Important Notices

BREAKFAST MENU

As you may be aware we have now made changes to our breakfast menu.

We have been introducing the children to different selections over the past weeks with some children really enjoying it.

HYGGE ACCREDITED SETTING



SCRUFF THE EVERYWHERE BEAR

Thank you to the children caring for our nursery bear, Scruff. We look forward to the pictures of activities and outings with him. If you haven't taken Scruff home yet but would like to, please talk to our staff.

Additionally, Scruff the bear can be taken home on weekends to encourage children to capture and share their experiences in our book.

SHOW AND TELL

We would also like to return to 'show and tell' every Wednesdays. Children will be allowed to bring one toy or object in and will be encouraged to discuss and show their peers. This will be to encourage children's communication, confidence, and use of vocabulary.

DESIGNATED CHILD PROTECTION LEAD

Primary – Shalamar Ward
Secondary – Megan Game
Tertiary- Miranda Watson

Designated SENCO (Special Educational Needs Co-ordinator)-
Michaela Howard

FOREST PLAY

At New Birth we are starting to introduce forest school into the nursery. Long-term outdoor education process that is holistic and learner led.

It allows children to develop themselves through healthy engagement with risk, problem-solving and self-discovery, all within a natural environment in a hands-on and thoughtful manner.

Our forest school leader is Miss Shalamar