



(51) International Patent Classification:

C08J 3/22 (2006.01)

C08K 5/00 (2006.01)

(21) International Application Number:

PCT/EP2014/068419

(22) International Filing Date:

29 August 2014 (29.08.2014)

(25) Filing Language:

English

(26) Publication Language:

English

(30) Priority Data:

13182482.3

30 August 2013 (30.08.2013)

EP

(71) Applicant: INNOSOLIDS B.V. [NL/NL]; Kampstraat 30, NL-6163 HG Geleen (NL).

(72) Inventor: VAN KESSEL, Theo; Kampstraat 30, NL-6163 HG Geleen (NL).

(74) Agent: RENKEMA, Jaap; P.O. Box 593, NL-6160 AN Geleen (NL).

AO, AT, AU, AZ, BA, BB, BG, BH, BN, BR, BW, BY, BZ, CA, CH, CL, CN, CO, CR, CU, CZ, DE, DK, DM, DO, DZ, EC, EE, EG, ES, FI, GB, GD, GE, GH, GM, GT, HN, HR, HU, ID, IL, IN, IR, IS, JP, KE, KG, KN, KP, KR, KZ, LA, LC, LK, LR, LS, LT, LU, LY, MA, MD, ME, MG, MK, MN, MW, MX, MY, MZ, NA, NG, NI, NO, NZ, OM, PA, PE, PG, PH, PL, PT, QA, RO, RS, RU, RW, SA, SC, SD, SE, SG, SK, SL, SM, ST, SV, SY, TH, TJ, TM, TN, TR, TT, TZ, UA, UG, US, UZ, VC, VN, ZA, ZM, ZW.

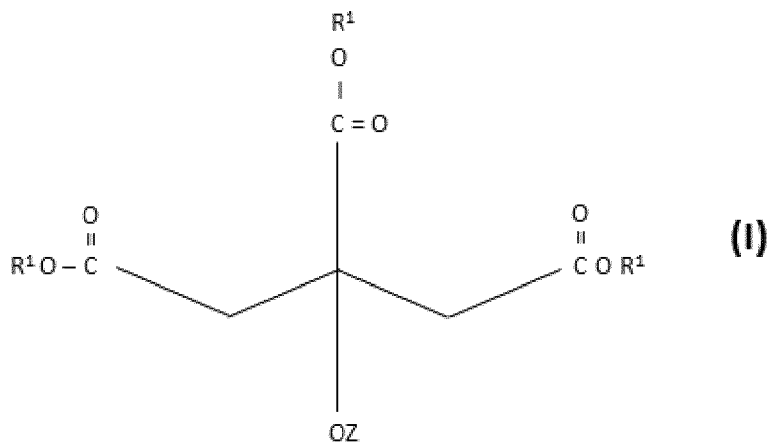
(84) Designated States (unless otherwise indicated, for every kind of regional protection available): ARIPO (BW, GH, GM, KE, LR, LS, MW, MZ, NA, RW, SD, SL, ST, SZ, TZ, UG, ZM, ZW), Eurasian (AM, AZ, BY, KG, KZ, RU, TJ, TM), European (AL, AT, BE, BG, CH, CY, CZ, DE, DK, EE, ES, FI, FR, GB, GR, HR, HU, IE, IS, IT, LT, LU, LV, MC, MK, MT, NL, NO, PL, PT, RO, RS, SE, SI, SK, SM, TR), OAPI (BF, BJ, CF, CG, CI, CM, GA, GN, GQ, GW, KM, ML, MR, NE, SN, TD, TG).

Published:

— with international search report (Art. 21(3))

(81) Designated States (unless otherwise indicated, for every kind of national protection available): AE, AG, AL, AM,

(54) Title: PIGMENT MASTERBATCH



(57) Abstract: The invention is directed to a pigment masterbatch, comprising a. 30-95 wt% of at least one pigment, b. 2-30 wt% of a compound A according to formula I, c. 1.0-10 wt% of a compound B according to formula $C_2H_4(NHC(O)R^3)_2$, and d. 1.5-20 wt% of a compound C, which contains at least one polyethyleneglycol moiety and at least one fatty acid moiety coupled to the polyethyleneglycol moiety, e. 0-50 wt% of a polymeric compound D wherein R^1 is an alkyl group comprising 1-20 carbon atoms and Z is hydrogen or a group according to the formula $C(O)R^2$, wherein R^2 is an alkyl group comprising 1-20 carbon atoms, and wherein R^3 is a fatty acid moiety comprising 10-30 carbon atoms, and wherein the wt% are relative to the total weight of the pigment masterbatch.

PIGMENT MASTERBATCH

The invention relates to a pigment masterbatch, to a process for the preparation of a pigment masterbatch, to the use of a pigment masterbatch, to a process for the
5 preparation of a polymer composition and to the polymer composition.

A pigment masterbatch is a solid or liquid additive that is used for coloring a polymer composition. The masterbatch is a highly concentrated mixture of pigments and other components. The masterbatch is added to a polymer composition before and/or during
10 extrusion of the polymer composition to obtain a colored polymer composition.

Masterbatches are described in, for example WO2012/084865 and WO2009/010673. WO2012/084865 describes a masterbatch consisting of pigment and a mold release agent. The mold release agent is selected from the group consisting of low-molecular
15 weight polyolefin oils, low-molecular weight polyolefin waxes, montan waxes and aliphatic or aromatic carboxylic acid esters of fatty acids and/or fatty alcohols. WO2009/010673 describes a process for the manufacturing of a masterbatch comprising the production of a mixture comprising at least one binder, at least one additive and/or at least one pigment and the pelletizing of said mixture. The binder can be chosen from
20 several commercial waxes comprising alcohols or amides. Ethylene bis stearamide waxes are mentioned as an example.

In the prior art two types of pigment masterbatches are known. So called dry (or solid) masterbatches, which are in the form of powders or pellets, and so called liquid masterbatches, which are in the form of liquids. Dosing the dry masterbatches with a
25 polymer composition to an extruder is relatively easy. However dosing a liquid masterbatch to a polymer composition in an extruder is cumbersome, gives rise to fouling of the working area and screw slip may occur, especially at higher loadings of liquid masterbatches. Furthermore liquid masterbatches tend to form agglomerates with flakes and/or powder resulting in clogging of the process equipment.

30 The pigment masterbatches of the prior art have a number of further disadvantages. In practice, for coloring different polymer compositions different pigment masterbatches must be prepared. Also coloring with pigment masterbatches can give the problem of non-uniform color distribution in the extrudate. Another problem is the change from one

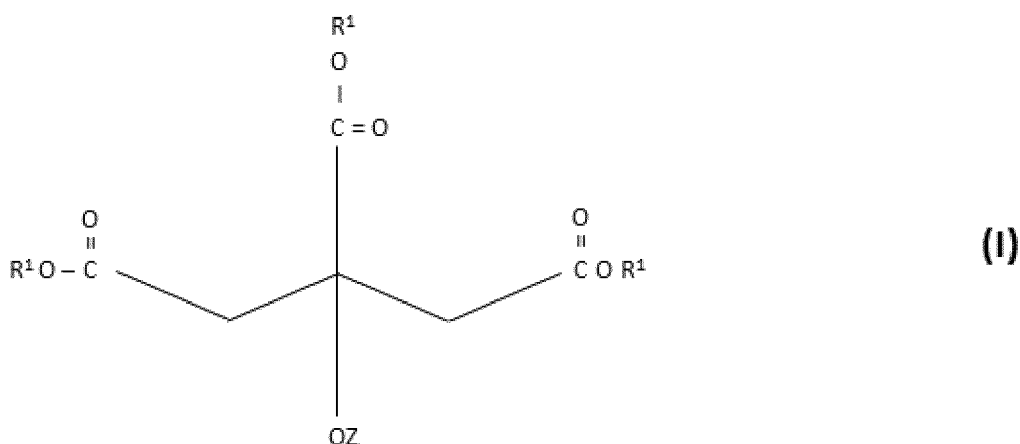
-2-

masterbatch to a different masterbatch on processing equipment. During this change cleaning of the equipment is necessary and cleaning of the equipment tends to take hours of time while making a lot of waste product .

- 5 It is an object of the present invention to prepare a universal masterbatch that can be applied in different types of polymer compositions.

This object is achieved by a pigment masterbatch, comprising

- a. 30-95 wt% of at least one pigment,
 10 b. 2-30 wt% of a compound A according to formula I,



- c. 1.0-10 wt% of a compound B according to formula $C_2H_4(NHC(O)R^3)_2$, and
 d. 1.5-20 wt% of a compound C, which contains at least one polyethyleneglycol moiety and at least one fatty acid moiety coupled to the polyethyleneglycol moiety,
 15 e. 0-50 wt% of a polymeric compound D

wherein R^1 is an alkyl group comprising 1-20 carbon atoms and Z is hydrogen or a group according to the formula $C(O)R^2$, wherein R^2 is an alkyl group comprising 1-20 carbon atoms, and wherein R^3 is a fatty acid moiety comprising 10-30 carbon atoms, preferably 16 to 22 carbon atoms.

- 20 The wt% are relative to the total weight of the pigment masterbatch.

It has surprisingly been found that by using the pigment masterbatch comprising the ingredients according to the invention the pigment masterbatch can be dosed easily to

processing equipment like for example an extruder or an injection molding machine and is dispersed easy and fast in a polymer composition during processing.

Furthermore the pigment masterbatch shows the advantage that an excellent color distribution in a colored polymer composition is obtained.

- 5 Another advantage is that processing equipment can be easily cleaned, during a short cleaning time. During cleaning a low amount of waste product is produced.

The masterbatch according to the invention acts like a dry-liquid colorant. For adding the masterbatch to the extruder or the injection molding machine, the masterbatch will be a solid, and can be easily handled. Once the masterbatch is in the processing equipment,
10 the masterbatch will function like a liquid colorant and give excellent uniform coloring of the polymer composition to which the masterbatch is added.

The pigment masterbatch according to the invention comprises at least one pigment. In principle any pigment (either rorganic, inorganic or dyestuff) can be applied in the present
15 invention. In general, pigments can have a biological, natural or chemical source.

Examples of pigments from a biological source are alizarin, alizarin crimson, gamboge, cochineal red, rose madder, indigo and Indian yellow.

Pigments from a natural or chemical source can be organic or inorganic. A lot of the inorganic pigments are metal complexes.

- 20 Mixtures of more than one pigment can be used in the pigment masterbatch.

Examples of organic pigments are Tyrian purple, magenta, phthalo green, phthalo blue and pigment red 170.

Examples of inorganic pigments are:

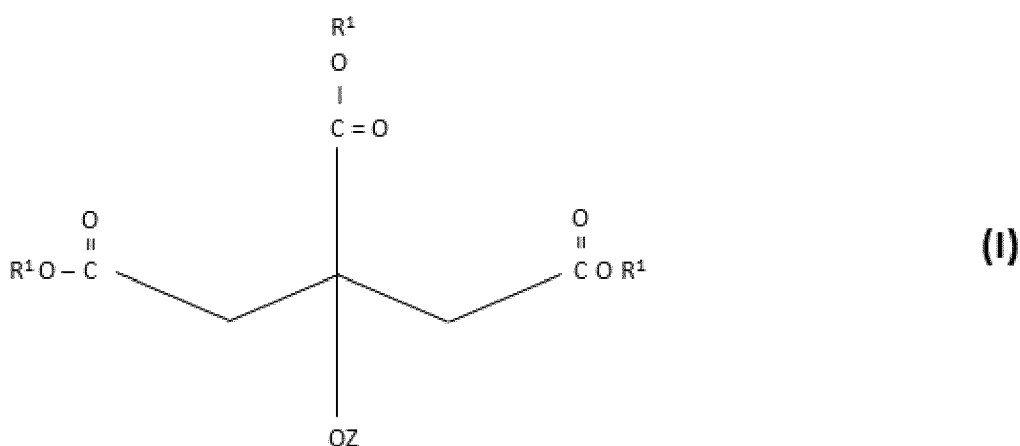
- Cadmium pigments: cadmium yellow, cadmium red, cadmium green, cadmium orange
- 25 • Carbon pigments: carbon black (including vine black, lamp black), ivory black (bone char)
- Chromium pigments: chrome yellow and chrome green
- Cobalt pigments: cobalt violet, cobalt blue, cerulean blue, aureolin (cobalt yellow)
- Copper pigments: Azurite, Han purple, Han blue, Egyptian blue, Malachite, Paris
30 green, Phthalocyanine Blue BN, Phthalocyanine Green G, verdigris, viridian
- Iron oxide pigments: sanguine, caput mortuum, oxide red, red ochre, Venetian red, Prussian blue
- Clay earth pigments (iron oxides): yellow ochre, raw sienna, burnt sienna, raw umber, burnt umber.

-4-

- Lead pigments: lead white, cremnitz white, Naples yellow, red lead
 - Mercury pigments: vermillion
 - Titanium pigments: titanium yellow, titanium beige, titanium white, titanium black
 - Ultramarine pigments: ultramarine, ultramarine green shade
- 5 • Zinc pigments: zinc white, zinc ferrite

The pigment is present in the masterbatch in an amount of 30-95 wt%. Preferably the amount of pigment is 40-90 wt%, more preferably 60-80 wt%.

10 The pigment masterbatch according to the invention comprises a compound A according to formula I,



wherein R^1 is an alkyl group comprising 1-20 carbon atoms and Z is hydrogen or a group according to the formula $-C(O)R^2$, wherein R^2 is an alkyl group comprising 1-20 carbon atoms. R^1 can be the same or different and is an alkyl group comprising 1-20 carbon atoms, preferably 1-15 carbon atoms, more preferably 1-10 carbon atoms. R^2 is an alkyl group comprising 1-20 carbon atoms, preferably 1-10 carbon atoms, more preferably 1-5 carbon atoms.

Examples of compounds A are triethylcitrate, tributylcitrate, trihexylcitrate, acetyltributylcitrate, propanoyltributylcitrate, acetyltrihexylcitrate and butanoyltriethylcitrate.

20 Preferably the compound A is chosen from tributylcitrate and acetyltributylcitrate.

Compound A is present in the pigment masterbatch in an amount of 2-30 wt%, wherein the wt% are relative to the total weight of the masterbatch, preferably the amount of compound A in the masterbatch is 4-20 wt%, more preferably 5-15 wt%.

The pigment masterbatch according to the invention comprises a compound B according to formula $C_2H_4(NHC(O)R^3)_2$, wherein R^3 is a fatty acid moiety comprising 10-30 carbon atoms, preferably 16 to 22 carbon atoms. The fatty acid moieties can be saturated or unsaturated. Examples of these fatty acid moieties are oleate, laureate, stearate and palmitate. Examples of compound B are ethylenebisstearamide, ethylenebislaureamide and ethylenebisoleamide.

Compound B is present in the pigment masterbatch in an amount of 1-10 wt%, preferably the amount of compound B in the masterbatch is 1.5-6 wt%, more preferably 2-5 wt%.

When the amount of compound B in the pigment masterbatch is too low the processing of the pigment masterbatch may be difficult and dispersion of the pigment in a polymer composition may not be optimal. When the amount of compound B in the pigment masterbatch is too high the pigmented polymer composition may show blooming.

The pigment masterbatch according to the invention comprises a compound C, which contains at least one polyethyleneglycol moiety and at least one fatty acid moiety coupled to the polyethyleneglycol moiety. The polyethyleneglycol moiety contains between 5 to 25 ethyleneglycol repeating units, preferably 8 to 24 ethylene glycol repeating units. The fatty acid moieties can be saturated or unsaturated and can contain 10 to 30 carbon atoms, preferably 16 to 22 carbon atoms. Examples of these fatty acid moieties are oleate, laureate, stearate, palmitate and ricinoleate. Examples of compound C include PEG 300 mono-oleate, PEG 300 di-oleate, PEG 300-monostearate, PEG 300-distearate, PEG 400 dioleate, PEG 400 distearate, PEG 400monolaurate, PEG 400 monooleate, PEG 400 monoricinoleate, PEG 400 monostearate.

A specific preferred example of compound C is an ethoxylated sorbitan ester. The ethoxylated sorbitan ester comprises a sorbitan group which is substituted by four polyethylene glycol substituents. The ethoxylated sorbitan ester can preferably comprise 14 to 26 ethylene glycol repeating units, preferably 16 to 24 ethylene glycol repeating units, more preferably between 18 and 22 repeating units. At least one of the ethylene glycol substituents in the ethoxylated sorbitan ester is connected via an ester bond to a fatty acid moiety. Preferably, at least two of the ethylene glycol substituents in the ethoxylated sorbitan ester are connected via an ester bond to a fatty acid moiety; more preferably at least three of the ethylene glycol substituents are connected via an ester bond to a fatty acid moiety. The fatty acid moieties can be saturated or unsaturated and can contain 10 to 30 carbon atoms, preferably 16 to 22 carbon atoms. Examples of these

fatty acid moieties are oleate, laurate, stearate and palmitate. Most preferred are ethoxylated sorbitan esters comprising four polyethylene glycol substituents and wherein wherein the ester comprises between 18 and 22 ethylene glycol repeating units and wherein three of the ethylene glycol substituents are connected to oleate, laurate or stearate groups. Examples of ethoxylated sorbitan esters are polyoxyethylene (20) sorbitane monolaurate, polyoxyethylene (20) sorbitane dilaurate, polyoxyethylene (20) sorbitane trilaurate, polyoxyethylene (20) sorbitane mono-oleate, polyoxyethylene (20) sorbitane di-oleate, polyoxyethylene (20) sorbitane tri-oleate, polyoxyethylene (20) sorbitane monostearate, polyoxyethylene (20) sorbitane distearate and polyoxyethylene (20) sorbitane tristearate.

The compound C is present in the pigment masterbatch in an amount of 1.5-20 wt%, wherein the wt% are relative to the total weight of the masterbatch, preferably the amount of ethoxylated sorbitan ester in the masterbatch is 2-10 wt%, more preferably 2.5-6 wt%.

The pigment masterbatch according to the invention can comprise a polymeric compound D. Examples of polymeric compounds are polyolefins, for example polyethylene, polypropylene and polyethylene waxes; elastomers; silicone rubbers; polyurethanes; polyamides, such as polyamide 6, polyamide 66, or polyamide 46; polyesters, such as polyethylene terephthalate and polybutylene terephthalate; polycarbonates; polyphenylene sulphide; ethylene vinyl acetate (EVA), ethylene methyl acrylate (EMA), and polyvinylbutyral (PVB) including blends and copolymers thereof. Polyethylene waxes are homo or copolymers of ethylene defined by a density range of 0.880–0.915 g/cm³. The amount of polymeric compound D in the pigment masterbatch preferably is 0-50 wt% based on the total weight of the pigment masterbatch. More preferably, the amount of polymeric compound D is 1-45 wt%; most preferably 2-40 wt%.

The pigment masterbatch can also comprise other ingredients. Examples of these ingredients are dispersing agents, fillers and polymeric compounds. The function of a dispersing agent is to significantly reduce the viscosity of a dispersion. The amount of dispersing agent in the pigment masterbatch preferably is 0-5 wt% based on the total weight of the pigment masterbatch. More preferably, the amount of dispersing agent is 2-4 wt%.

A filler can be used to raise the amount of solids in the pigment masterbatch. The fillers may be of natural or synthetic, mineral or non-mineral origin. Examples of fillers include

clays, nanoclays, wood flour silica, glass, metals, inorganic oxides, oxides of metals, hydroxides of aluminum or ammonium or magnesium, carbonates of alkali and alkaline earth metals antimony trioxide, calcium silicate, diatomaceous earth, fuller earth, kieselguhr, mica, talc, slate flour, volcanic ash, cotton flock, asbestos, kaolin, alkali and

5 alkaline earth metal sulfates (such as sulfates of barium and calcium sulfate, titanium, zeolites, wollastonite, titanium boride, zinc borate, tungsten carbide, ferrites, molybdenum disulfide, asbestos, cristobalite, aluminosilicates and combinations comprising at least one of the foregoing fillers. Preferably, talc is used as a filler. Talc is a relatively abundant, inexpensive, highly hydrophobic and generally unreactive mineral. It can be categorized as

10 a hydrated magnesium silicate and its main components can be represented by, inter alia, one or more of the formulas $(\text{Si}_2\text{O}_5)_2\text{Mg}_3(\text{OH})_2$, $\text{Si}_8\text{Mg}_6\text{O}_{20}(\text{OH})_4$ or $\text{Mg}_{12}\text{Si}_{16}\text{O}_{40}(\text{OH})_8$. As used in the pigment masterbatch according to the invention, 'talc' refers to both natural and synthetic talc.

Talc is available in several particle sizes, for example the particle sizes of talc are

15 classified as 'ultrafine' (average particle size of lower than $1\mu\text{m}$, for example an average particle size in the range of 0.3 to $0.9\mu\text{m}$) and 'fine' (average particle size of at least $1\mu\text{m}$, for example an average particle size of $1\mu\text{m}$ to $5\mu\text{m}$). Preferably, fine or ultrafine talc is used in the process of the present invention.

The amount of filler in the pigment masterbatch is 0-20 wt% based on the total weight of

20 the pigment masterbatch. Preferably, the amount of filler is 2-18 wt%; more preferably 5-15 wt%.

According to one preferred embodiment of the invention the pigment masterbatch comprises

- 25 a) 40-80 wt% of at least one pigment;
- b) 5-15 wt% of compound A, wherein compound A is chosen from triethylcitrate, tributylcitrate, trihexylcitrate, acetyltriethylcitrate, propanoyltributylcitrate, acetyltriethylcitrate or butanoyltriethylcitrate;
- c) 2-5 wt% of compound B, wherein compound B is chosen from
- 30 ethylenebisstearamide, ethylenebislaureamide or ethylenebisoleamide;
- d) 2.5-6 wt% of an ethoxylated sorbitan ester wherein the ester is substituted with four polyethylene glycol substituents, wherein the ester comprises between 18 and 22 ethylene glycol repeating units and wherein three of the ethylene glycol substituents are connected to oleate, stearate or laurate groups; and

- e) 1-40 wt% of a polymeric compound D.

The invention is further directed a process for the preparation of a pigment masterbatch by mixing the at least one pigment, compound A, compound B, the ethoxylated sorbitan ester and optionally polymeric compound D. Mixing of the filler with the other ingredients can be performed in commonly used mixing devices to provide a homogeneous pigment masterbatch. Commonly used mixing devices are blenders, for example V blender, ribbon blender or a cone blender; mixers, for example a jet mixer, a planetary mixer or a Banbury mixer; or extruders.

- 10 The temperature during mixing can be between 100 and 250 °C.

The invention is also directed to the use of the pigment masterbatch for coloring a polymer composition. The advantage of the pigment masterbatch according to the invention is that a very homogeneous polymer composition can be obtained in high yield. Also with a single masterbatch, different types of polymer compositions (for example polyolefins, PVC and polyesters) can be colored. This can have many advantages. For example, when articles comprise more than one type of polymer in the polymer composition, the coloring of the article can be performed with a single pigment masterbatch. This is more efficient, gives more stable and simple production processes and uniform colored articles can be obtained.

To obtain a colored polymer composition any amount (like for example 0,001-10 wt%) of the masterbatch according to the invention can be added to a polymer composition. The polymer composition preferably is thermoplastic. Examples of thermoplastic polymers compositions are polymethylacrylate, polymethylmethacrylate, polyamide, polyolefins (polyethylenes, polypropylene, polybutylene), polystyrene, polyvinylchloride, polytetrafluoroethylene, thermoplastic vulcanizates (TPV), polyesters, polyurethane, and thermoplastic polyimides. Preferably, an amount of between 0.01wt% and 10 wt% of the masterbatch is added to the polymer composition.

- 30 The invention is also directed to a process for the preparation of a colored polymer composition comprising mixing polymer composition and the pigment masterbatch in processing equipment . These procedures are known to the skilled man.

The invention also relates to a colored polymer composition comprising between 0,001 wt% and 10 wt% of the pigment masterbatch according to the invention.

Although the invention has been described in detail for purposes of illustration, it is understood that such detail is solely for that purpose and variations can be made therein by those skilled in the art without departing from the spirit and scope of the invention as defined in the claims.

It is further noted that the invention relates to all possible combinations of features described herein, preferred in particular are those combinations of features that are present in the claims.

It is noted that the term 'comprising' does not exclude the presence of other elements. However, it is also to be understood that a description on a product comprising certain components also discloses a product consisting of these components. Similarly, it is also to be understood that a description on a process comprising certain steps also discloses a process consisting of these steps.

The invention will now be elucidated by way of the following examples without however being limited thereto.

EXAMPLES

A test procedure has been set up to prepare masterbatches, and to prepare a test piece. A pigment masterbatch is prepared containing pigment, additives and a polypropylene copolymer (INEOS). This pigment masterbatch is diluted in a first step by providing 10 weight % of the pigment masterbatch with 90 weight% of the target polymer, using a ZSK extruder (L/D 40) to make a pigment blend.

After this first dilution step, 2 wt% of the pigment blend is added to 98 wt% of target polymer to prepare a test piece through injection molding. The test piece (3 x 3 cm) has a thickness of 1 mm. The dispersion of pigment in the test piece can be visually determined by looking through the thin test piece against a light background.

The test results are rated as follows:

Table 1.0

<u>Rating</u>	<u>Interpretation</u>	<u>Flow lines</u>
0	Excellent	None; homogeneous
1	Reasonable	Few lines
2	Bad	Clearly visible flow lines
3	Very bad	Heterogeneous test piece

Experiment 1:

A pigment masterbatch is prepared using 80 wt% of Red pigment 48:2, 20 wt% of polypropylene copolymer (INEOS) and varying amount of additives.

5

The additives that are used are:

acetyltributylcitrate (ATBC),

ethylenebislauramide (EBL) and

sorbitane polyoxyethylene (20) trioleate (SPT).

10

After making the pigment masterbatch in a compounder, the pigment masterbatch is diluted with polypropylene copolymer (INEOS) (10:90 wt ratio) to make the pigment blend. This pigment blend is injection moulded with the polypropylene copolymer (PP) (2:98 wt ratio) to make a test piece. Testpieces are inspected for the presence of flow lines.

15 Pigment masterbatch compositions and test results of the test pieces are shown in table 1.1.

Table 1.1

Red 48:2 (wt%)	PP (wt%)	ATBC (wt%)	EBC (wt%)	SPT (wt%)	Rating
80	20	-	-	-	3
80	20	5	-	-	2
80	20	-	5	-	3
80	20	-	-	5	3
80	20	5	5	5	0

20 The experiment shows that addition of a single additive has no or a minimal effect on the improvement of flow lines in the test piece. Surprisingly, the combination of 3 additives

gives a strong improvement on creating a homogeneous dispersion of the pigment in the test piece.

Experiment 2

- 5 A pigment masterbatch having an olive green color is prepared with a pigment which is a combination of 32% PW 6 (white), 1.3 % PBK 7 (black), 52 % PY 155 (yellow) and 1.25 % PG 7 (green).

Further the pigment masterbatch contains 20 wt% polypropylene copolymer (INEOS), and varying amounts of additives (tributylcitrate, ethylenebislauramide, sorbitan

- 10 polyoxyethylene (20) trioleate).

The pigment masterbatch is diluted into a pigment blend using either polypropylene (PP), PVC or PET. Test pieces are prepared with further dilution with PP, PVC and PET (respectively) and visually inspected.

The results are summarized in tables 2.1, 2.2 and 2.3.

15

Table 2.1 Polymer PP

Pigment (wt%)	PP (wt%)	TBC (wt%)	EBL (wt%)	SPT (wt%)	Rating
80	20	5	2.5	6	0
80	20	5	-	6	1
80	20	-	2.5	6	2
80	20	5	2.5	-	1
80	20	-	2.5	-	2
80	20	-	-	-	2

Table 2.2 Polymer PVC

Pigment (wt%)	PVC (wt%)	TBC (wt%)	EBL (wt%)	SPT (wt%)	Rating
80	20	5	2	5	0
80	20	-	2	5	3
80	20	5	-	-	2
80	20	5	2	-	2

-12-

80	20	-	-	-	3
----	----	---	---	---	---

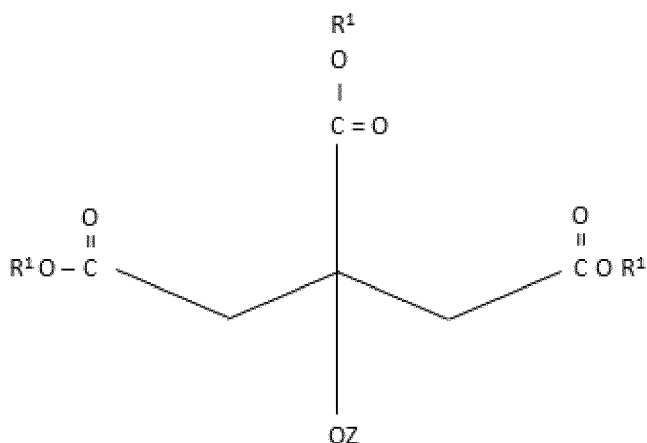
Table 2.3 Polymer PET

Pigment (wt%)	PET (wt%)	TBC (wt%)	EBL (wt%)	SPT (wt%)	Rating
80	20	5	2	4	0
80	20	5	-	-	2
80	20	5	2	-	1
80	20	-	2	4	2

- 5 The experiments in tables 2.1, 2.2 and 2.3 also show that addition of a single additive has no or a minimal effect on the improvement of flow lines in the test pieces. Surprisingly, the combination of 3 additives gives a strong improvement on creating a homogeneous dispersion of the pigment in the test pieces comprising three different types of target polymer compositions.
- 10 Also different polymers compositions can be blended with one single masterbatch to obtain excellent colored polymer compositions.

CLAIMS

1. A pigment masterbatch, comprising
 - a. 30-95 wt% of at least one pigment,
 - b. 2-30 wt% of a compound A according to formula I,



(I)

5

- c. 1.0-10 wt% of a compound B according to formula $\text{C}_2\text{H}_4(\text{NHC}(\text{O})\text{R}^3)_2$, and
- d. 1.5-20 wt% of a compound C, which contains at least one polyethyleneglycol moiety and at least one fatty acid moiety coupled to the polyethyleneglycol moiety,
- e. 0-50 wt% of a polymeric compound D

10

wherein R^1 is an alkyl group comprising 1-20 carbon atoms and Z is hydrogen or a group according to the formula $\text{C}(\text{O})\text{R}^2$, wherein R^2 is an alkyl group comprising 1-20 carbon atoms, and wherein R^3 is a fatty acid moiety comprising 10-30 carbon atoms, and wherein the wt% are relative to the total weight of the pigment masterbatch.

15

2. The pigment masterbatch according to claim 1, wherein compounds A are chosen from the group consisting of triethylcitrate, tributylcitrate, trihexylcitrate, acetyltributylcitrate, propanoyltributylcitrate, acetyltriethylcitrate and butanoyltriethylcitrate.
3. The pigment masterbatch according to claim 1 or 2, wherein R^3 is a fatty acid moiety chosen from the group consisting of oleate, laurate, stearate and palmitate

20

4. The pigment masterbatch according to claim 1 or 2, wherein compound B is chosen from the group consisting of ethylenebisstearamide, ethylenebislaureamide and ethylenebisoleamide.
5. The pigment masterbatch according to anyone of claims 1-4, wherein compound C comprises between 5 and 25 ethyleneglycol repeating units and the fatty acid moiety comprises 10-30 carbon atoms.
6. The pigment masterbatch according to claim 5, wherein the fatty acids are chosen from the group consisting of oleate, laureate, stearate, palmitate and ricinoleate.
7. The pigment masterbatch according to anyone of claims 1-4, wherein compound C is an ethoxylated sorbitan ester.
8. The pigment masterbatch according to claim 7 wherein the ethoxylated sorbitan ester comprises between 14 and 26 ethylene glycol repeating units, preferably 16 to 24 ethylene glycol repeating units, more preferably 18 to 22 ethylene glycol repeating units.
9. The pigment masterbatch according to anyone of claim 7 or 8, wherein at least two of the ethylene glycol substituents in the ethoxylated sorbitan ester are connected via an ester bond to a fatty acid moiety.
10. The pigment masterbatch according to claim 9, wherein the fatty acid moieties are chosen from the group consisting of oleate, laureate, stearate and palmitate.
11. The pigment masterbatch according to anyone of claim 1-10, wherein the amount of polymeric compound D is 1-45 wt%; most preferably 2-40 wt%.
12. The pigment masterbatch according to claim 1 comprising
 - a. 40-80 wt% of at least one pigment;
 - b. 5-15 wt% of compound A, wherein compound A is chosen from triethylcitrate, tributylcitrate, trihexylcitrate, acetyltriethylcitrate, propanoyltributylcitrate, acetyltriethylcitrate or butanoyltriethylcitrate;
 - c. 2-5 wt% of compound B, wherein compound B is chosen from ethylenebisstearamide, ethylenebislaureamide or ethylenebisoleamide;
 - d. 2.5-6 wt% of an ethoxylated sorbitan ester wherein the ester is substituted with four polyethyleneglycol substituents, wherein the ester comprises between 18 and 22 ethylene glycol repeating units and wherein three of the ethylene glycol substituents are connected to oleate, stearate or laurate groups; and
 - e. 1-40 wt% of a polymeric compound D.

13. Use of the pigment masterbatch according to anyone of claims 1-12 for coloring a polymer composition.
14. Colored polymer composition comprising a polymer composition and between 0,001 wt% and 10 wt% of the pigment masterbatch according to anyone of claims 1-10.

INTERNATIONAL SEARCH REPORT

International application No

PCT/EP2014/068419

A. CLASSIFICATION OF SUBJECT MATTER
 INV. C08J3/22 C08K5/00
 ADD.

According to International Patent Classification (IPC) or to both national classification and IPC

B. FIELDS SEARCHED

Minimum documentation searched (classification system followed by classification symbols)
 C08J C08K

Documentation searched other than minimum documentation to the extent that such documents are included in the fields searched

Electronic data base consulted during the international search (name of data base and, where practicable, search terms used)

EPO-Internal, WPI Data

C. DOCUMENTS CONSIDERED TO BE RELEVANT

Category*	Citation of document, with indication, where appropriate, of the relevant passages	Relevant to claim No.
A	US 2013/018137 A1 (SEIDEL ANDREAS [DE] ET AL) 17 January 2013 (2013-01-17) cited in the application claims 1-6 -----	1-14
A	US 4 057 672 A (CREEKMORE MARK D ET AL) 8 November 1977 (1977-11-08) example 1; tables 1,2 -----	1-14
A	US 4 072 790 A (CREEKMORE MARK D ET AL) 7 February 1978 (1978-02-07) example 1; table 1 -----	1-14



Further documents are listed in the continuation of Box C.



See patent family annex.

* Special categories of cited documents :

"A" document defining the general state of the art which is not considered to be of particular relevance

"E" earlier application or patent but published on or after the international filing date

"L" document which may throw doubts on priority claim(s) or which is cited to establish the publication date of another citation or other special reason (as specified)

"O" document referring to an oral disclosure, use, exhibition or other means

"P" document published prior to the international filing date but later than the priority date claimed

"T" later document published after the international filing date or priority date and not in conflict with the application but cited to understand the principle or theory underlying the invention

"X" document of particular relevance; the claimed invention cannot be considered novel or cannot be considered to involve an inventive step when the document is taken alone

"Y" document of particular relevance; the claimed invention cannot be considered to involve an inventive step when the document is combined with one or more other such documents, such combination being obvious to a person skilled in the art

"&" document member of the same patent family

Date of the actual completion of the international search

12 November 2014

Date of mailing of the international search report

20/11/2014

Name and mailing address of the ISA/

European Patent Office, P.B. 5818 Patentlaan 2
 NL - 2280 HV Rijswijk
 Tel. (+31-70) 340-2040,
 Fax: (+31-70) 340-3016

Authorized officer

Russell, Graham

INTERNATIONAL SEARCH REPORT

Information on patent family members

International application No

PCT/EP2014/068419

Patent document cited in search report	Publication date	Patent family member(s)	Publication date
US 2013018137	A1	17-01-2013	CA 2822518 A1 28-06-2012
			CN 103443167 A 11-12-2013
			EP 2655486 A1 30-10-2013
			KR 20140017534 A 11-02-2014
			TW 201239011 A 01-10-2012
			US 2013018137 A1 17-01-2013
			WO 2012084865 A1 28-06-2012

US 4057672	A	08-11-1977	NONE

US 4072790	A	07-02-1978	NONE
