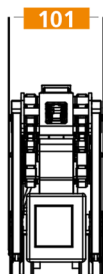
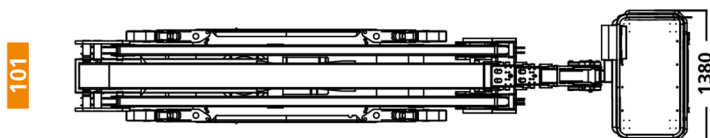
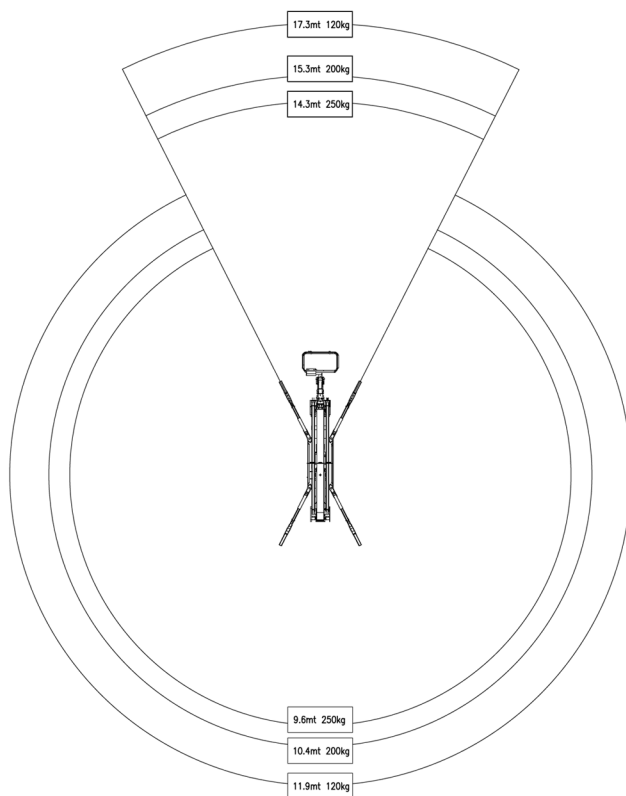


**5,75 m minimum overall length!**



**ONLY  
1 m minimal  
width!**



## Specifications

### TECHNICAL DATA:

max. working height:	31 m
lateral outreach:	17,3 m / 120 kg   15,3 m / 200 kg   14,3 m / 250 kg
Basket capacity:	250 kg
overall length:	max. 6,45 m   min. 5,75 m
width/height:	1,01 x 1,99 m
total weight:	4.700 kg
jacking width:	standard 4,6 x 4,89 m   small 3,0 x 6,29 m
ground pressure:	in working position 37,26 kN/m <sup>2</sup>   under crawlers 65,30kN/m <sup>2</sup> in travel position 5,14 kN/m <sup>2</sup>

### EQUIPMENT:

- Quickly removable aluminum basket
- Basket rotation
- Diesel engine
- i-Performing electric pump (patented) with auto Start/Stop system
- 230V power outlet in basket
- Radio remote control with interactive and multi-lingual display
- Track width adjusting system with independent axle
- Multi-area stabilizer setting (2 different set-up positions)
- Asymmetric stability area
- Moment limiting device
- Automatic center position of turret
- Self Stabilizing system
- Automatic START & STOP of engines and RPM control
- Proportional and simultaneous electro-hydraulic controls
- Proportional track drive with hydraulic breaking system
- Double drive speed system with safety control
- Driving Lateral slope alarm always with safety stop
- Driving possible with jib boom raised (with selector)
- Interblock outriggers/booms
- Emergency push-button with engine stop
- Simple Emergency lowering procedure
- Electric pump for the emergency lowering of platform
- Blue Hybrid pack\*
- No-marking crawlers
- Go-Home function

