

Qty. Description

1 NBG 65-40-250/245 AAE2CESBQQEPW1



Note! Product picture may differ from actual product

Product No.: [99811825](#)

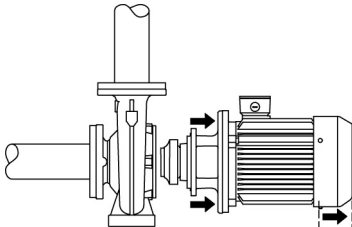
Non-self-priming, single-stage, centrifugal volute pump designed according to ISO 5199 with dimensions and rated performance according to ISO 2858 (16 bar). Flanges are PN 16 with dimensions according to AS2129 table E. The pump has an axial suction port, radial discharge port, horizontal shaft and a back pull-out design enabling removal of the motor, motor stool, cover and impeller without disturbing the pump housing or pipework.

The unbalanced rubber bellows seal is according to DIN EN 12756.

The pump is close-coupled to a fan-cooled asynchronous motor.

The product's minimum efficiency index (MEI) is greater or equal to 0.70. This is by the Commission Regulation (EU) considered as an indicative benchmark for best-performing water pump available on the market as from 1 January 2013.

The back pull-out design means that the pump can be serviced by a single person without disturbing the pump housing or pipes.



Cast-iron parts have an epoxy-based coating made in a cathodic electro-deposition (CED) process. CED is a high-quality dip-painting process where an electrical field around the products ensures deposition of paint particles as a thin, well-controlled layer on the surface.

Pump

The pump housing has both a priming and a drain hole closed by plugs. The impeller is a closed impeller with double-curved blades with smooth surfaces. The impeller is statically balanced according to ISO 1940-1 class G6.3 and hydraulically balanced to compensate for axial thrust.

Motor stool and pump cover are made of cast iron (EN-GJL-250). Coupling guards are fitted to the motor stool.

The pump is fitted with an unbalanced rubber bellows seal with torque transmission across the spring and around the bellows. Due to the bellows, the seal does not wear the shaft, and the axial movement is not prevented by deposits on the shaft.

Seal faces:

- Rotating seal ring material: silicon carbide (SiC)
- Stationary seat material: silicon carbide (SiC)

This material pairing is used where higher corrosion resistance is required. The high hardness of this material pairing offers good resistance against abrasive particles.

Secondary seal material: EPDM (ethylene-propylene rubber)

EPDM has excellent resistance to hot water. EPDM is not suitable for mineral oils.

The pump housing has feet.

The language on the pump nameplate is English.

Motor

Qty.	Description
1	<p>The motor is a totally enclosed, fan-cooled motor with principal dimensions to IEC and DIN standards. Electrical tolerances comply with IEC 60034.</p> <p>The motor efficiency is classified as IE3 in accordance with IEC 60034-30-1.</p> <p>The motor has thermistors (PTC sensors) in the windings in accordance with DIN 44081/DIN 44082. The protection reacts to both slow- and quick-rising temperatures, e.g. constant overload and stalled conditions.</p> <p>Thermal switches must be connected to an external control circuit in a way which ensures that the automatic reset cannot cause accidents. The motors must be connected to a motor-protective circuit breaker according to local regulations.</p> <p>The motor can be connected to a variable speed drive for adjustment of pump performance to any duty point. Grundfos CUE offers a range of variable speed drives. Please find more information in Grundfos Product Center.</p> <p>Further product details</p> <p>Cast-iron parts have an epoxy-based coating made in a cathodic electro-deposition (CED) process. CED is a high-quality dip-painting process where an electrical field around the products ensures deposition of paint particles as a thin, well-controlled layer on the surface.</p> <p>Technical data</p> <p>Controls:</p> <p>Frequency converter: None</p> <p>Pressure sensor: N</p> <p>Liquid:</p> <p>Pumped liquid: Water</p> <p>Liquid temperature range: -25 .. 120 °C</p> <p>Selected liquid temperature: 20 °C</p> <p>Density: 998.2 kg/m³</p> <p>Technical:</p> <p>Pump speed on which pump data are based: 2945 rpm</p> <p>Rated flow: 64.79 m³/h</p> <p>Rated head: 68.79 m</p> <p>Actual impeller diameter: 245 mm</p> <p>Nominal impeller diameter: 250</p> <p>Type of impeller: Standard</p> <p>Shaft seal arrangement: Single</p> <p>Primary shaft seal: BQQE</p> <p>Code for shaft seal: BQQE</p> <p>Curve tolerance: ISO9906:2012 3B</p> <p>Bearing design: Standard</p> <p>Materials:</p> <p>Type key, code for materials: C</p> <p>Type key, code for rubber components. E = EPDM, V=FKM: E</p> <p>Pump housing: Cast iron</p> <p> EN-GJL-250</p> <p> ASTM class 35</p> <p>Wear ring: Bronze</p>



Company name:

Created by:

Phone:

Date:

13/02/2026

Qty.	Description
1	<p>CuSn10-C</p> <p>Impeller: Cast iron EN-GJL-200 ASTM class 30</p> <p>Pump house, internal coating: CED</p> <p>Shaft: Stainless steel EN 1.4401 AISI 316</p> <p>Installation:</p> <p>Maximum ambient temperature: 40 °C</p> <p>Maximum operating pressure: 16 bar</p> <p>Pipe connection standard: AS2129 table E</p> <p>Size of inlet connection: DN 65</p> <p>Size of outlet connection: DN 40</p> <p>Pressure rating for connection: PN 16</p> <p>Bearing lubrication: Grease</p> <p>Pump housing with feet (Yes/No): Yes</p> <p>Support block (Yes/No): N</p> <p>Electrical data:</p> <p>Motor type: WEG</p> <p>Rated power - P2: 18.5 kW</p> <p>Mains frequency: 50 Hz</p> <p>Rated voltage: 3 x 380-415 V</p> <p>Rated current: 35.3-33.1 A</p> <p>Starting current: 900 %</p> <p>Cos phi - power factor: 0.86-0.84</p> <p>Rated speed: 2945 rpm</p> <p>IE efficiency: IE392.6%</p> <p>IE Efficiency class: IE3</p> <p>Motor efficiency at full load: 92.6 %</p> <p>Motor efficiency at 3/4 load: 92.6 %</p> <p>Number of poles: 2</p> <p>Enclosure class (IEC 34-5): IP55</p> <p>Insulation class (IEC 85): F</p> <p>Motor No: 99174341</p> <p>Others:</p> <p>Minimum efficiency index, MEI ≥: 0.70</p> <p>Net weight: 188 kg</p> <p>Gross weight: 213 kg</p> <p>Shipping volume: 0.707 m³</p> <p>Language on pump nameplate: GB</p>



Company name:

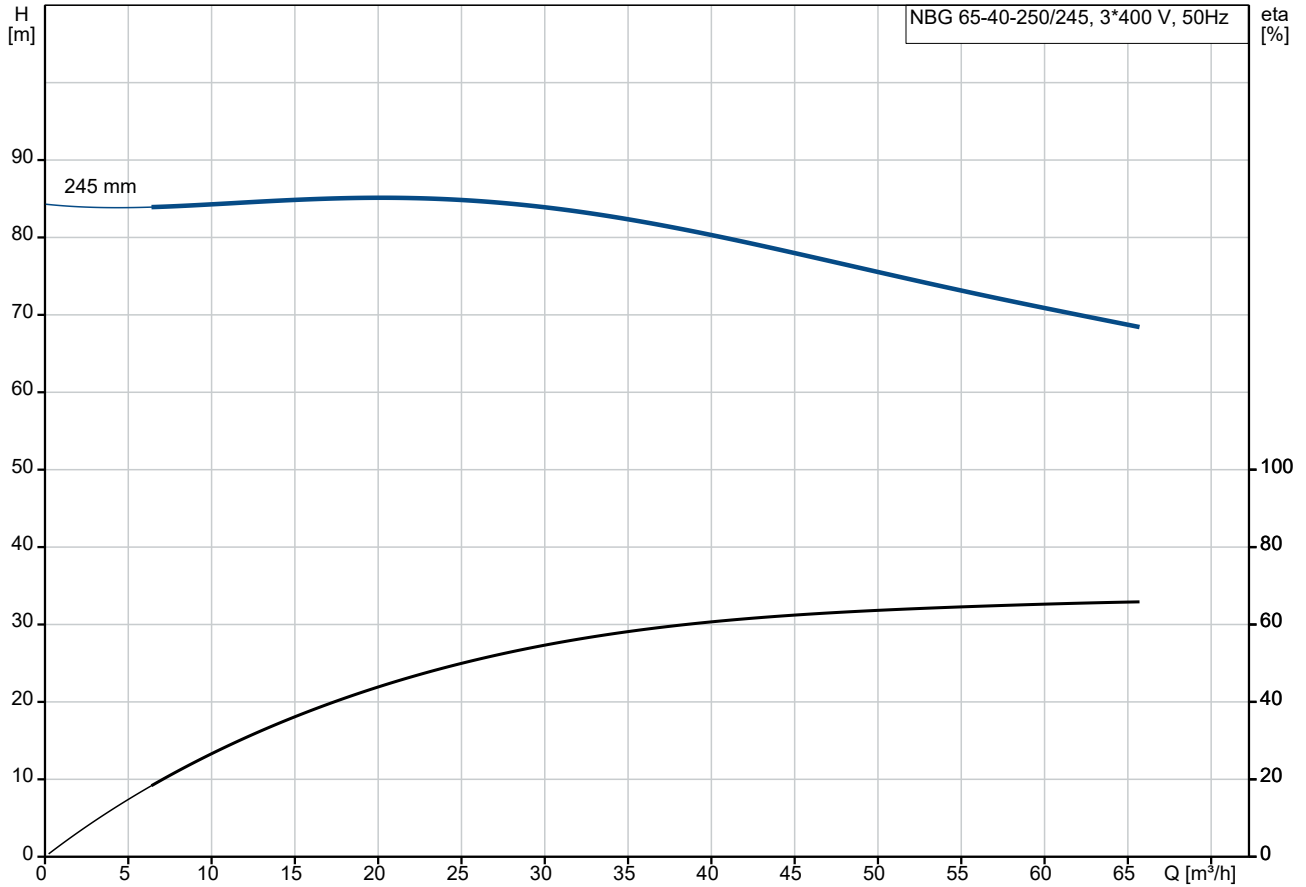
Created by:

Phone:

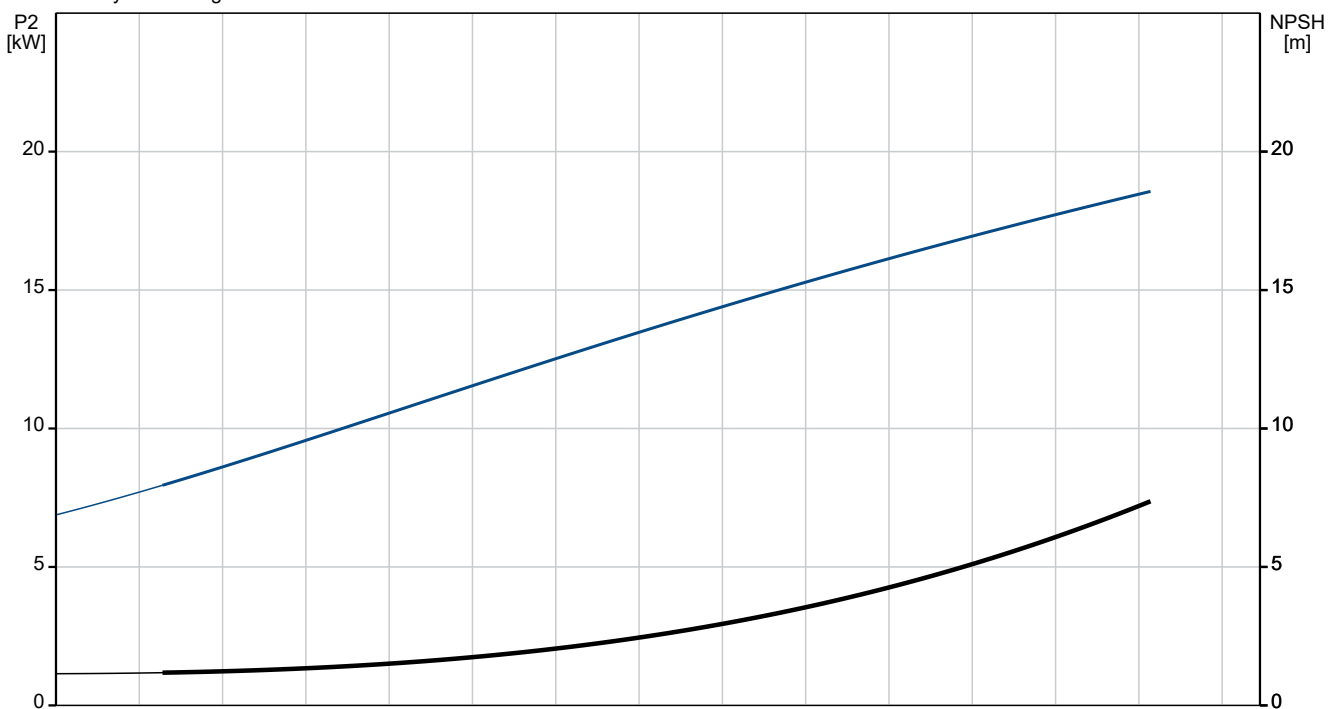
Date:

13/02/2026

99811825 NBG 65-40-250/245 AAE2CESBQQEPW1 50 Hz



Pumped liquid = Water
Liquid temperature during operation = 20 °C
Density = 998.2 kg/m³





Company name:

Created by:

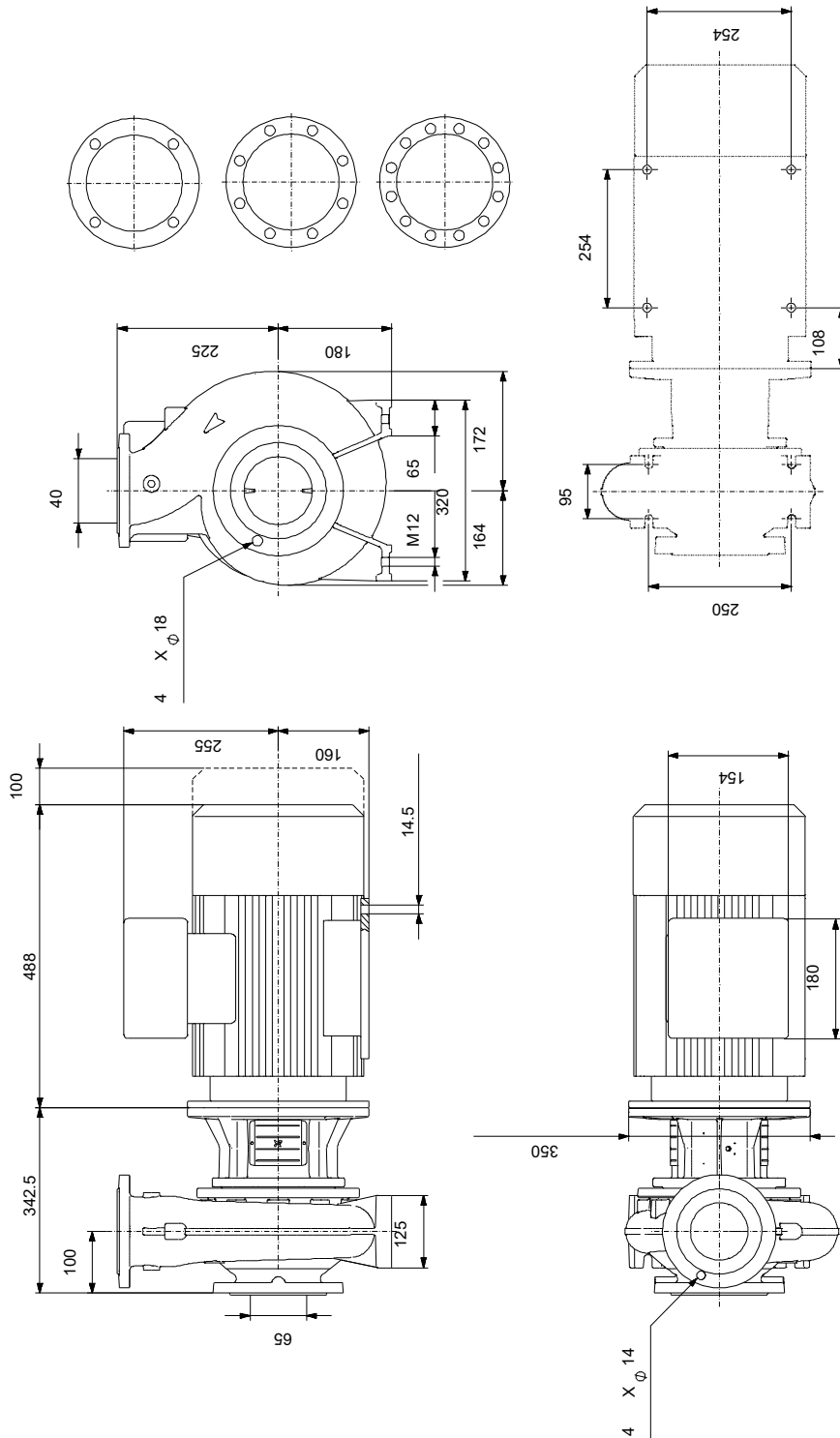
Phone:

Date:

13/02/2026

Description	Value
Electrical data:	
Motor type:	WEG
Rated power - P2:	18.5 kW
Mains frequency:	50 Hz
Rated voltage:	3 x 380-415 V
Rated current:	35.3-33.1 A
Starting current:	900 %
Cos phi - power factor:	0.86-0.84
Rated speed:	2945 rpm
IE efficiency:	IE392.6%
IE Efficiency class:	IE3
Motor efficiency at full load:	92.6 %
Motor efficiency at 3/4 load:	92.6 %
Number of poles:	2
Enclosure class (IEC 34-5):	IP55
Insulation class (IEC 85):	F
Built-in motor protection:	PTC
Motor No:	99174341
Mount. design. acc. IEC 34-7:	IM B35
Controls:	
Frequency converter:	None
Pressure sensor:	N
Others:	
Minimum efficiency index, MEI \geq :	0.70
Net weight:	188 kg
Gross weight:	213 kg
Shipping volume:	0.707 m ³
Language on pump nameplate:	GB

99811825 NBG 65-40-250/245 AAE2CESBQQEPW1 50 Hz



Note! All units are in [mm] unless others are stated.
 Disclaimer: This simplified dimensional drawing does not show all details.