

Qty. Description

1 NBG 125-100-200/211 AF2ASBAQE



Note! Product picture may differ from actual product

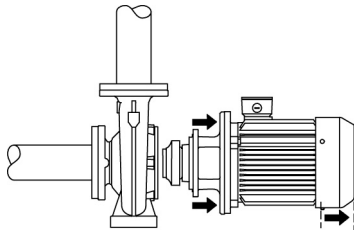
Product No.: [98084053](#)

Flanges are PN 16 with dimensions according to EN 1092-2. The pump has an axial suction port, radial discharge port, horizontal shaft and a back pull-out design enabling removal of the motor, motor stool, cover and impeller without disturbing the pump housing or pipework.

The unbalanced rubber bellows seal is according to DIN EN 12756.

The pump is close-coupled to a fan-cooled asynchronous motor.

The back pull-out design means that the pump can be serviced by a single person without disturbing the pump housing or pipes.



Pump

Motor stool and pump cover are made of cast iron (EN-GJL-250). Coupling guards are fitted to the motor stool.

The pump is fitted with an unbalanced rubber bellows seal with torque transmission across the spring and around the bellows. Due to the bellows, the seal does not wear the shaft, and the axial movement is not prevented by deposits on the shaft.

Seal faces:

- Rotating seal ring material: carbon graphite, metal-impregnated
- Stationary seat material: silicon carbide (SiC)

Due to the favourable lubricating properties of carbon graphite, the seal is suitable for use even under poor lubricating conditions, such as hot water.

However, under such conditions, wear on the carbon graphite face can be expected, and seal life will be reduced .

The material pairing is not recommended for liquids containing particles as this will result in wear on the SiC face.

Secondary seal material: EPDM (ethylene-propylene rubber)

EPDM has excellent resistance to hot water. EPDM is not suitable for mineral oils.

Motor

The motor is a totally enclosed, fan-cooled motor with principal dimensions to IEC and DIN standards. Electrical tolerances comply with IEC 60034.

The motor efficiency is classified as IE2 in accordance with IEC 60034-30.

The motor has thermistors (PTC sensors) in the windings in accordance with DIN 44081/DIN 44082. The protection reacts to both slow- and quick-rising temperatures, e.g. constant overload and stalled conditions.

Thermal switches must be connected to an external control circuit in a way which ensures that the automatic reset cannot cause accidents. The motors must be connected to a motor-protective circuit breaker according to local regulations.

Qty.	Description
1	<p>The motor can be connected to a variable speed drive for adjustment of pump performance to any duty point. Grundfos CUE offers a range of variable speed drives. Please find more information in Grundfos Product Center.</p>
	<p>Further product details</p>
	<p>Technical data</p>
	<p>Liquid: Pumped liquid: Water Liquid temperature range: 0 .. 120 °C Selected liquid temperature: 20 °C Density: 998.2 kg/m³</p>
	<p>Technical: Pump speed on which pump data are based: 1455 rpm Rated flow: 162.3 m³/h Rated head: 12.8 m Actual impeller diameter: 211 mm Shaft seal arrangement: Single Primary shaft seal: BAQE Code for shaft seal: BAQE Curve tolerance: ISO9906:2012 3B Bearing design: Standard</p>
	<p>Materials: Type key, code for materials: A Pump housing: Cast iron EN-GJL-250 ASTM A48-40B</p>
	<p>Wear ring: Bronze ASTM CuSn10</p>
	<p>Impeller: Cast iron EN-GJL-200 ASTM A48-30B</p>
	<p>Installation: Maximum ambient temperature: 40 °C Pipe connection standard: EN 1092-2 Size of inlet connection: DN 125 Size of outlet connection: DN 100 Pressure rating for connection: PN 16 Bearing lubrication: Grease Support block (Yes/No): No</p>
	<p>Electrical data: Motor type: SIEMENS</p>



Company name:

Created by:

Phone:

Date:

13/02/2026

Qty.	Description
1	<p>Rated power - P2: 7.5 kW Mains frequency: 50 Hz Rated voltage: 3 x 380-415D/660-690Y V Rated current: 14.4/8.30 A Starting current: 700 % Cos phi - power factor: 0.84 Rated speed: 1460 rpm IE Efficiency class: IE2 Number of poles: 4 Enclosure class (IEC 34-5): 55 (Protect. water jets/dust) Insulation class (IEC 85): F Motor No: 83B15222</p> <p>Others: Minimum efficiency index, MEI \geq: 0.65 Net weight: 140 kg Gross weight: 149 kg Shipping volume: 0.518 m³</p>



Company name:

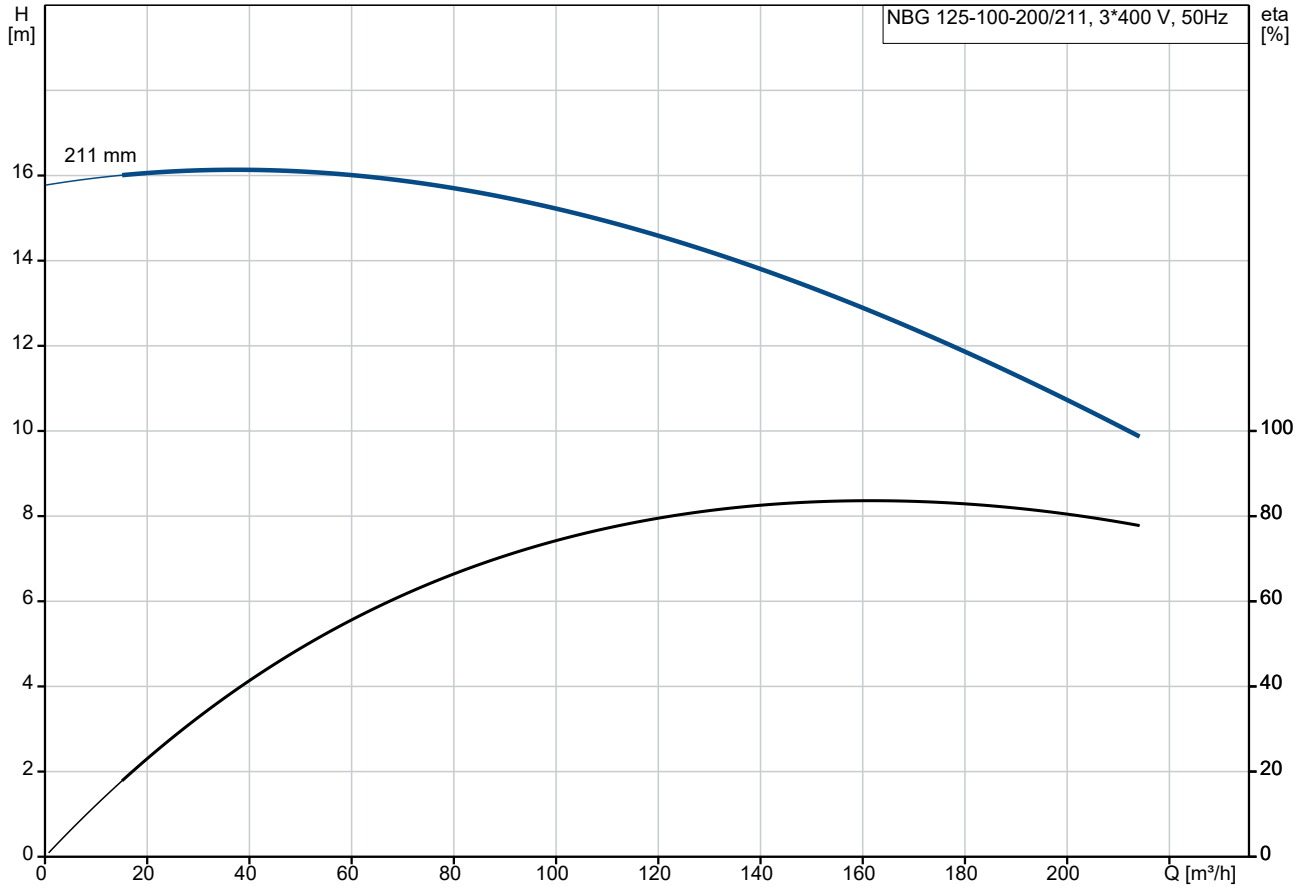
Created by:

Phone:

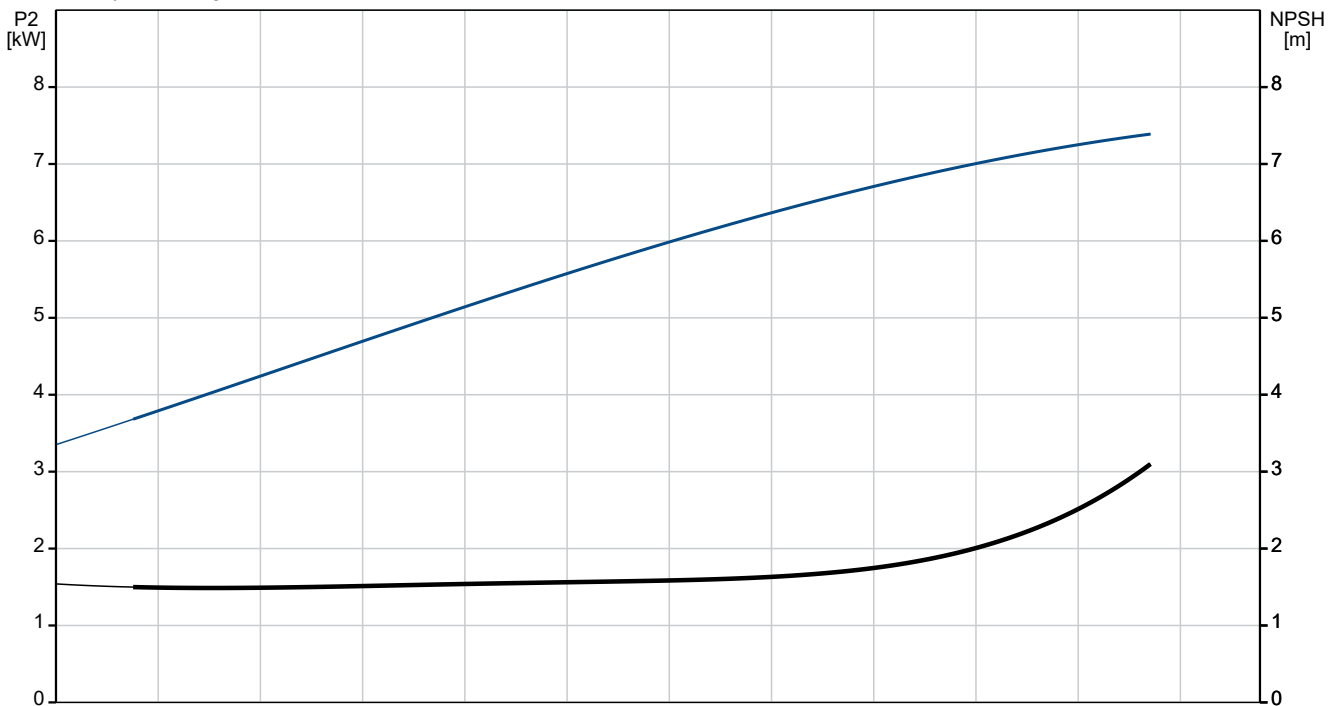
Date:

13/02/2026

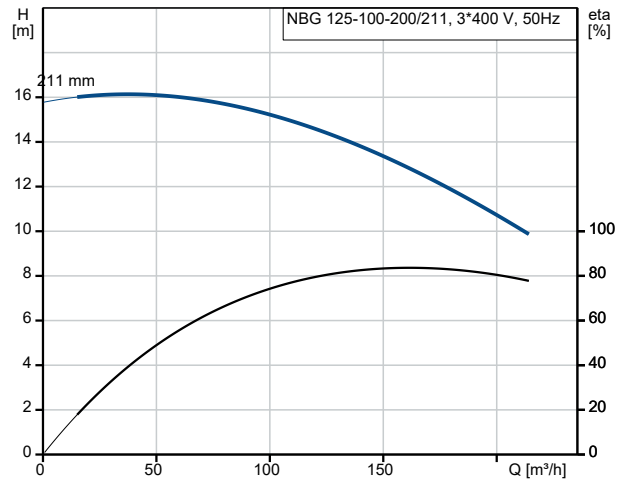
98084053 NBG 125-100-200/211 AF2ASBAQE 50 Hz



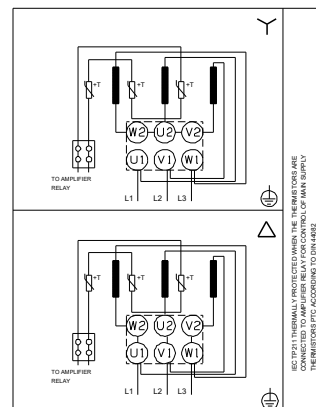
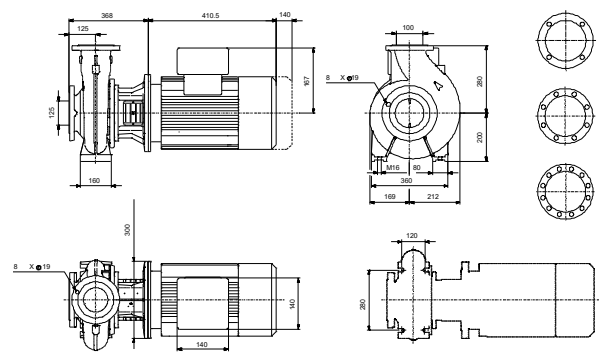
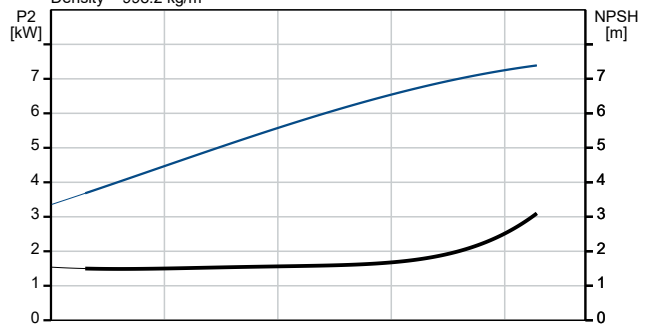
Pumped liquid = Water
Liquid temperature during operation = 20 °C
Density = 998.2 kg/m³



Description	Value
General information:	
Product name:	NBG 125-100-200/211 AF2ASBAQE
Product No:	98084053
Technical:	
Pump speed on which pump data are based:	1455 rpm
Rated flow:	162.3 m ³ /h
Rated head:	12.8 m
Actual impeller diameter:	211 mm
Shaft seal arrangement:	Single
Primary shaft seal:	BAQE
Shaft diameter:	32 mm
Code for shaft seal:	BAQE
Curve tolerance:	ISO9906:2012 3B
Pump version:	A
Bearing design:	Standard
Materials:	
Type key, code for materials:	A
Pump housing:	Cast iron EN-GJL-250 ASTM A48-40B
Wear ring:	Bronze ASTM CuSn10
Impeller:	Cast iron EN-GJL-200 ASTM A48-30B
Material code:	A
Installation:	
Maximum ambient temperature:	40 °C
Type key, code for pipework connection:	F2
Pipe connection standard:	EN 1092-2
Size of inlet connection:	DN 125
Size of outlet connection:	DN 100
Pressure rating for connection:	PN 16
Bearing lubrication:	Grease
Support block (Yes/No):	No
Connect code:	F2
Liquid:	
Pumped liquid:	Water
Liquid temperature range:	0 .. 120 °C
Selected liquid temperature:	20 °C
Density:	998.2 kg/m ³
Electrical data:	
Motor type:	SIEMENS
Rated power - P2:	7.5 kW
Mains frequency:	50 Hz
Rated voltage:	3 x 380-415D/660-690Y V
Rated current:	14.4/8.30 A
Starting current:	700 %
Cos phi - power factor:	0.84
Rated speed:	1460 rpm
IE Efficiency class:	IE2
Number of poles:	4
Enclosure class (IEC 34-5):	55 (Protect. water jets/dust)
Insulation class (IEC 85):	F



Pumped liquid = Water
Liquid temperature during operation = 20 °C
Density = 998.2 kg/m³





Company name:

Created by:

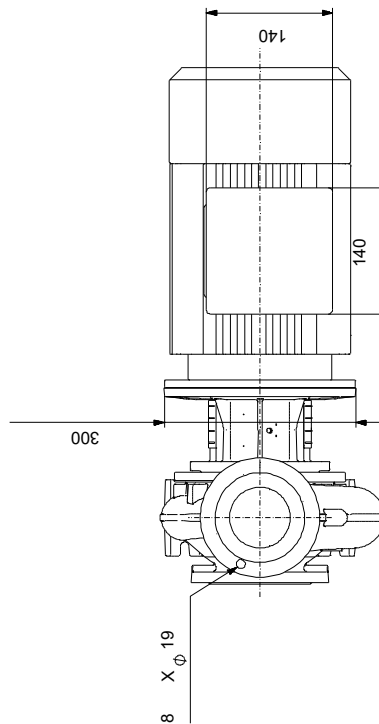
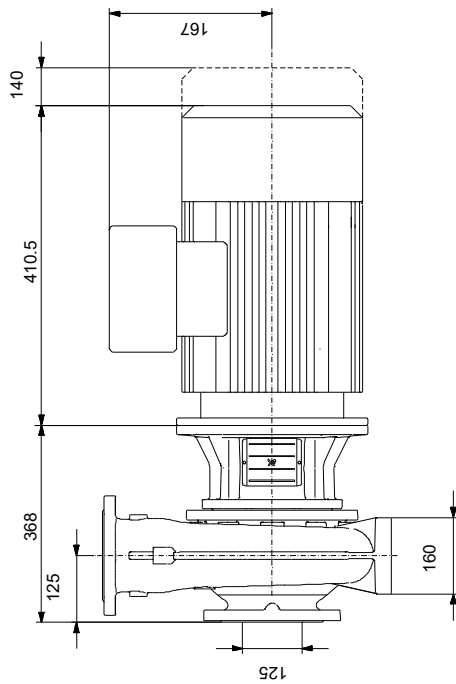
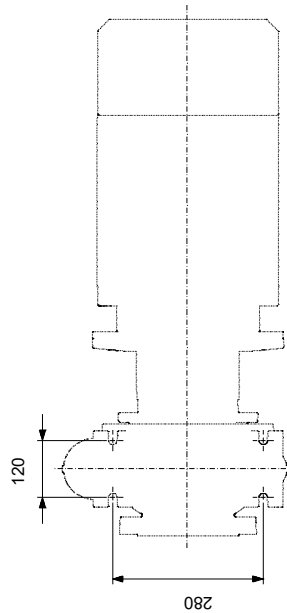
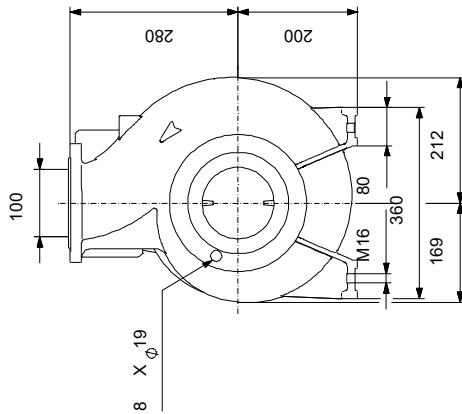
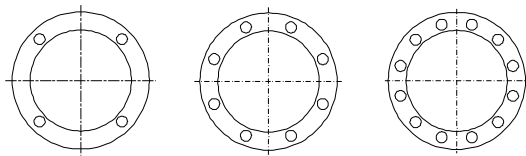
Phone:

Date:

13/02/2026

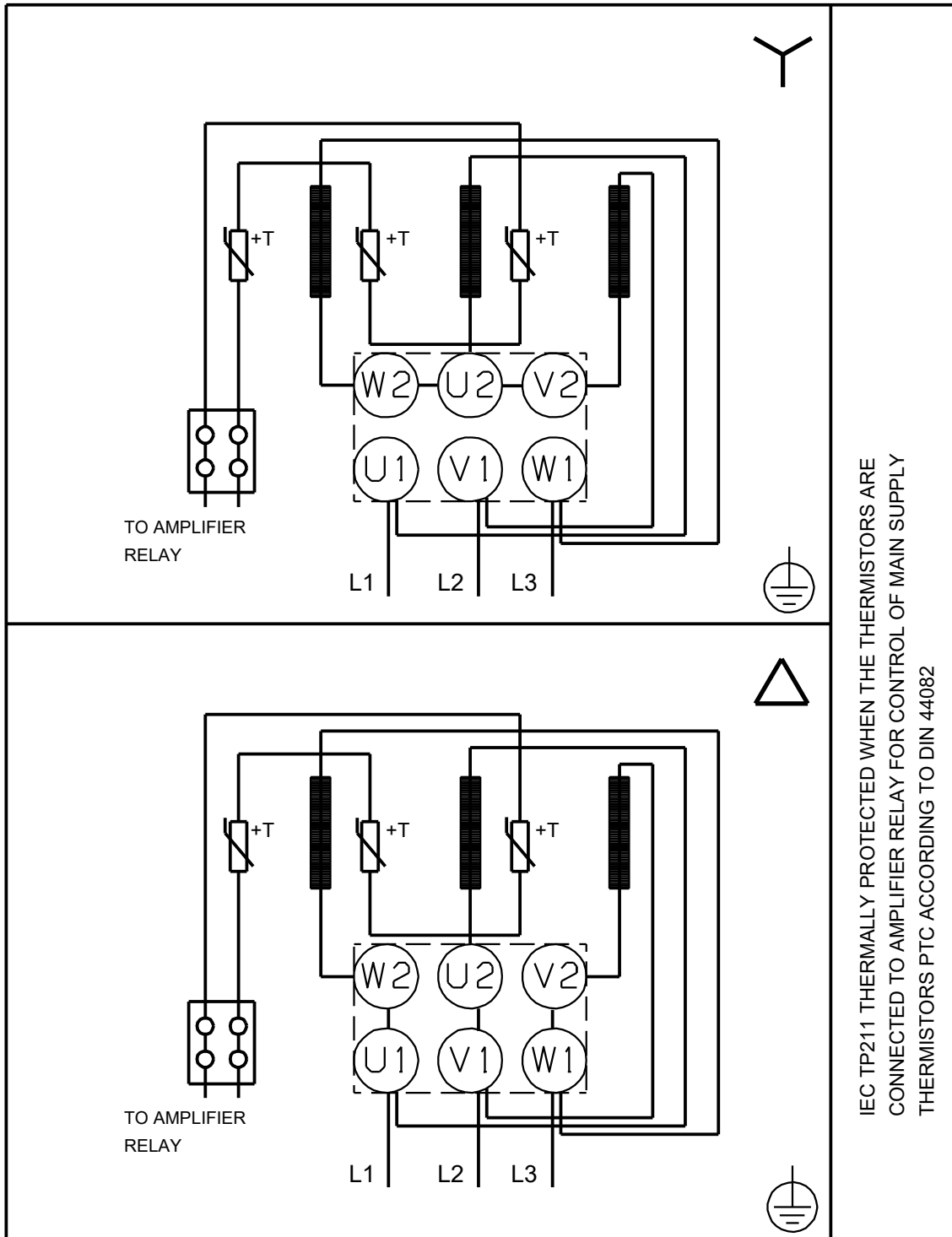
Description	Value
Built-in motor protection:	PTC
Motor No:	83B15222
Mount. design. acc. IEC 34-7:	IM V1/B5
Others:	
Minimum efficiency index, MEI ≥:	0.65
Net weight:	140 kg
Gross weight:	149 kg
Shipping volume:	0.518 m ³

98084053 NBG 125-100-200/211 AF2ASBAQE 50 Hz



Note! All units are in [mm] unless others are stated.
Disclaimer: This simplified dimensional drawing does not show all details.

98084053 NBG 125-100-200/211 AF2ASBAQE 50 Hz



Note! All units are in [mm] unless others are stated.