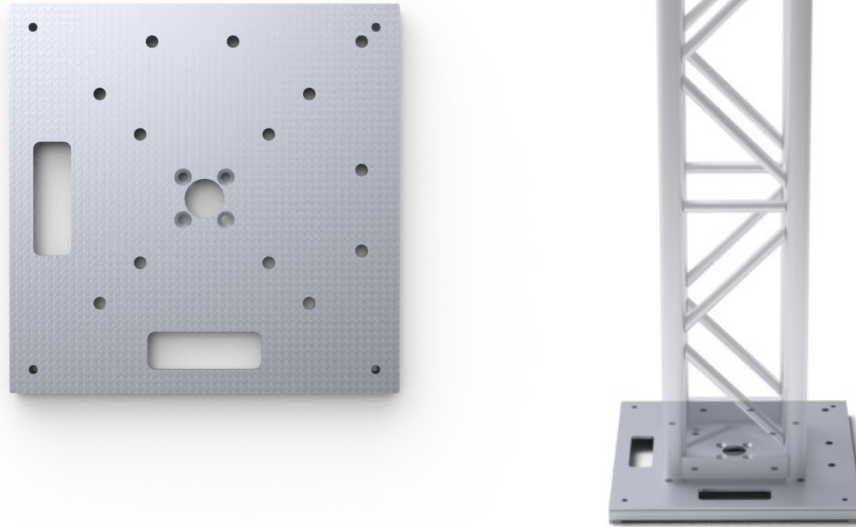
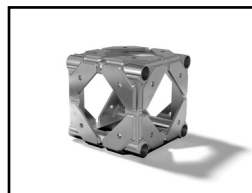


Truss Base

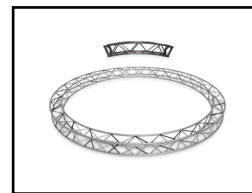


20" / 36" Truss Base

Since 1974, Smartstage has been setting the standard for stage, truss, and seating components through ongoing innovation and a commitment to the teams that make events come to life. Our 20" and 36" truss base plates provide a rugged, stable platform for vertical installs. Each plate provides a multitude of connection points, providing maximum versatility for creativity in design and layout / structure options.

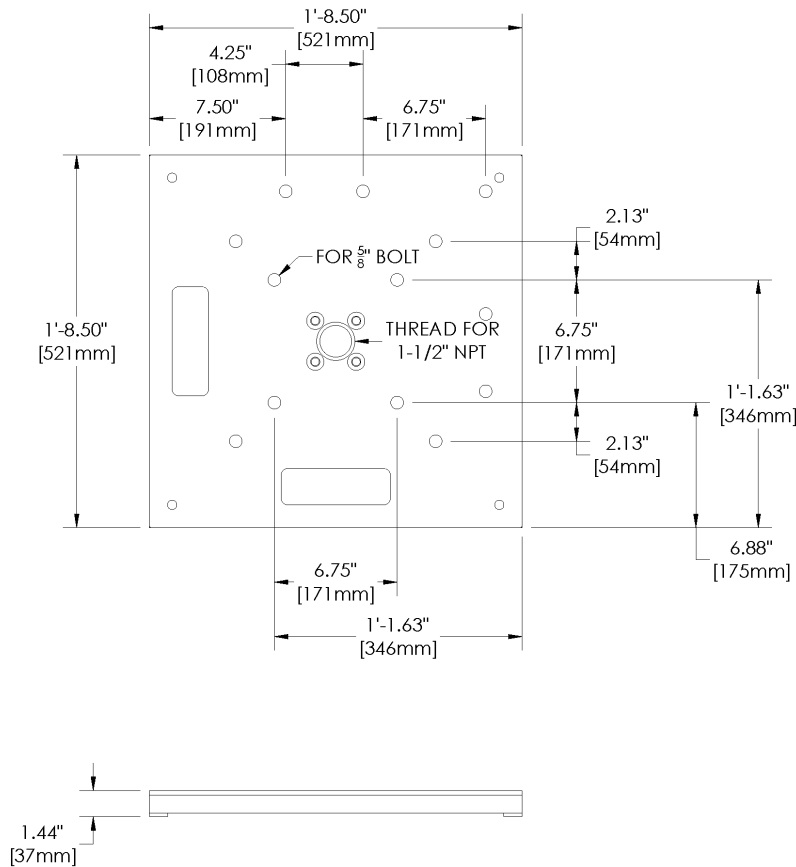


RELATED ITEM
12" CORNER BLOCK



RELATED ITEM
16" x 16" CIRCLE TRUSS

Truss Base



SPECIFICATIONS

- Size: 20.5" x 20.5" x 1.44" (521mm x 521mm x 37mm)
- Weight: 35lbs (15.88kg)
- Finish: Silver vein black powder coating
- Used for 12" and 16" truss
- 16" truss requires a faceplate adapter for connection
- Center can receive a 1.5" NPT threaded pipe
- 12" can be centered or offset to the corner.

DOCUMENTATION

