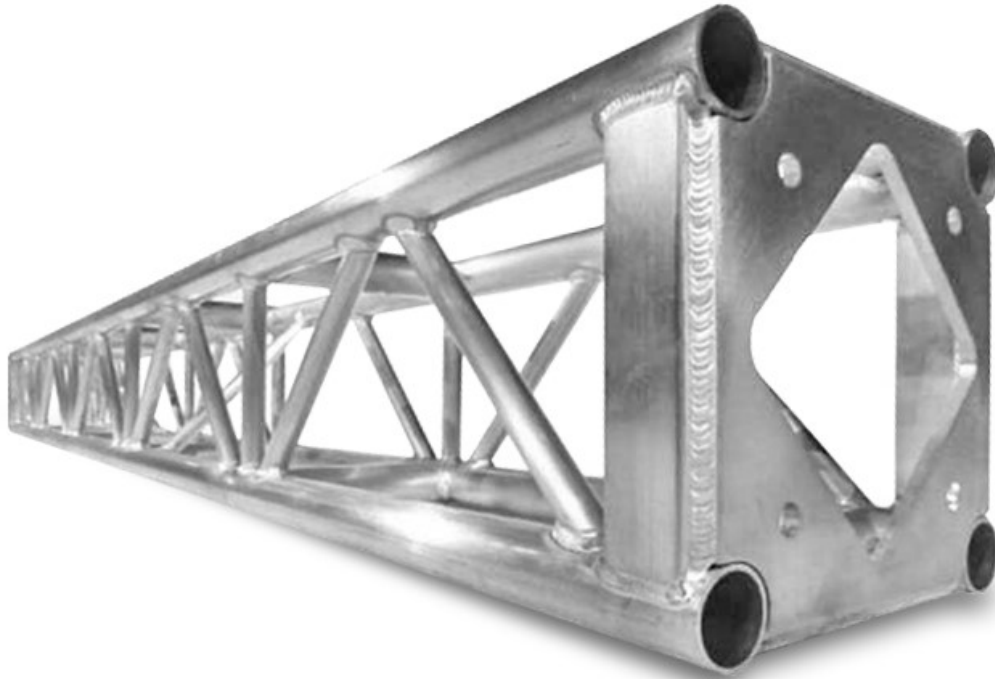
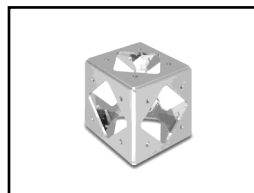


Lighting Truss



12" x 12" Lighting Truss

Smartstage truss bolt connections are designed and engineered with life-dependable welds to perform to the highest standards. They are TUV & SGS certified worldwide load tested and x-rayed for quality assurance. Our truss comes in multiple lengths (from 1' to 10'), has an easy-to-assemble bolt-style connection integrated into the design, and numerous accessories, wedges, hinges, and corner blocks ready to connect.

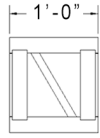
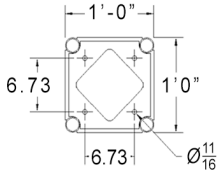
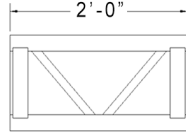
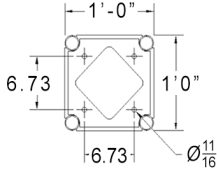
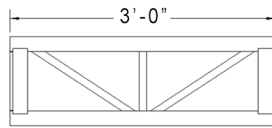
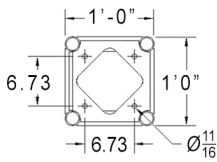
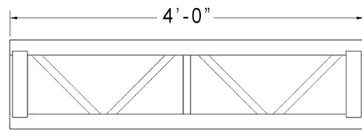
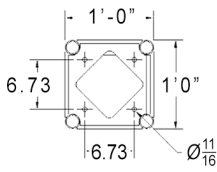
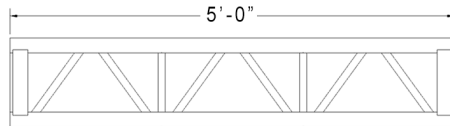
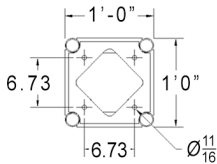
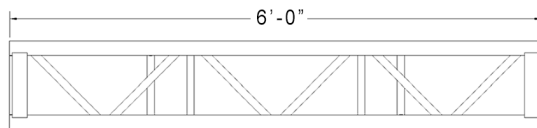
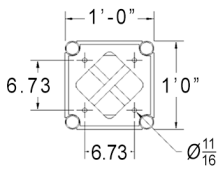
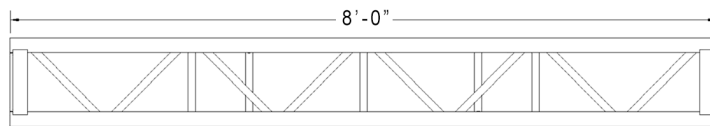
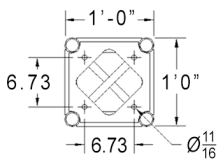
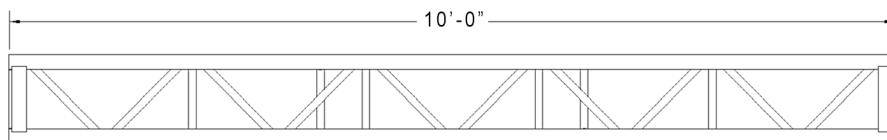
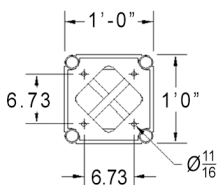


RELATED ITEM
12" CORNER BLOCK



RELATED ITEM
16" x 16" CIRCLE TRUSS


Lighting Truss



1 FOOT TRUSS (SKU#: TB1201)

2 FOOT TRUSS (SKU#: TB1202)

3 FOOT TRUSS (SKU#: TB1203)

4 FOOT TRUSS (SKU#: TB1204)

5 FOOT TRUSS (SKU#: TB1205)

6 FOOT TRUSS (SKU#: TB1206)

8 FOOT TRUSS (SKU#: TB1208)

10 FOOT TRUSS (SKU#: TB1210)


SPECIFICATIONS

- **Size:** 12" x 12" (30.48 cm x 30.48 cm)
- **Length:** 1' - 8', and 10' (30.48 cm - 304.8 cm)
- **Diagonal tube:** 1" x 0.125" (25 mm x 3.124 mm)
- **Weight:** 14 - 62 lbs (6.35 kg - 28.12 kg)
- **Box shape:** Four round tubes OD of 2" (50.8 mm)
- **Material:** Welded to TUV standards 6061-T6 alloy
- **Finish:** Natural aluminum
- **Coating:** (optional) powder coating
- **Cert:** TUV & SGS certified (load tested & inspected)
- **Compatibility:** Compatible with all other 12" truss
- **Components:** Truss bolts sets available

DOCUMENTATION



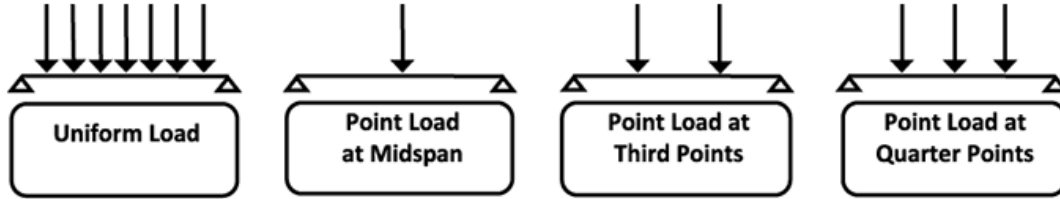

VIEW ONLINE


DOWNLOADS

Lighting Truss

ALLOWABLE LOAD DATA

12" TRUSS—STRAIGHT HORIZONTAL SPANS



No. of Sections	Span ^{1, 8} (ft)	Uniform Load ²			Maximum Allowable Point Loads ^{3, 4, 6}					
		Load (plf)	Total Load (lbs)	Deflection (in)	Center Point		Third Point		Quarter Point	
					Load (lbs)	Deflection (in)	Load (lbs)	Deflection (in)	Load (lbs)	Deflection (in)
1	8	420	3360	0.12	845 ⁵	0.04	2 x 500 ⁵	0.02	3 x 360 ⁵	0.07
2	16	105	1680	0.49	845	0.32	2 x 500	0.10	3 x 360	0.47
3	24	47	1128	0.60	560	0.56	2 x 420	0.54	3 x 240	0.59
4	32	25	800	0.72	420	0.70	2 x 300	0.70	3 x 180	0.67
5	40	12	480	0.80	250	0.90	2 x 250	0.86	3 x 100	0.85

- Span indicates distance between truss supports.
- Maximum uniformly distributed load that may be supported by a single horizontal 2" pipe is 270 plf.
- Uniform load shall be distributed equally to bottom chord and/or top chord members to the greatest extent possible.
- Maximum single concentrated point load that may be supported by a single horizontal 2" pipe is 500 lbs.
- Concentrated loads shall be hung from top chord members only. Each concentrated load shall have four truss support points equally distributed between both top chords.
- Allowable concentrated point loads for 8' span truss may be doubled provided the load is hung from 4 unique support points equally distributed over both bottom chords.
- For point loads at intervals not indicated use equivalent uniform load to determine capacity.
- Truss sections shall be spliced together using (4) 5/8" diameter grade 8 thru bolts or a Truss Corner
- Block with (8) 5/8" diameter grade 8 thru bolts. The 22.5-degree 30-degree and 45-degree truss corner blocks shall be located no more than 8'-0" from a support point on both sides.
- Truss lengths of 1', 2', 3', 4', 5', 6', 8', and 10' have a load rating equal to the 8' truss span and are subject to the uniform and concentrated loading restrictions of footnotes 2, 3, 4, and 5.