



RiT's CAT6A Shielded field termination plugs are cost-effective building blocks for your cabling system.

Phosphor bronze IDC contacts ensure excellent conductivity, durability, and outstanding resistance against wear or corrosion. With innovative Plug design, keeps pairs together to streamline the installation process. High quality connectors ensure system reliability and stability by press-fit assembly process.

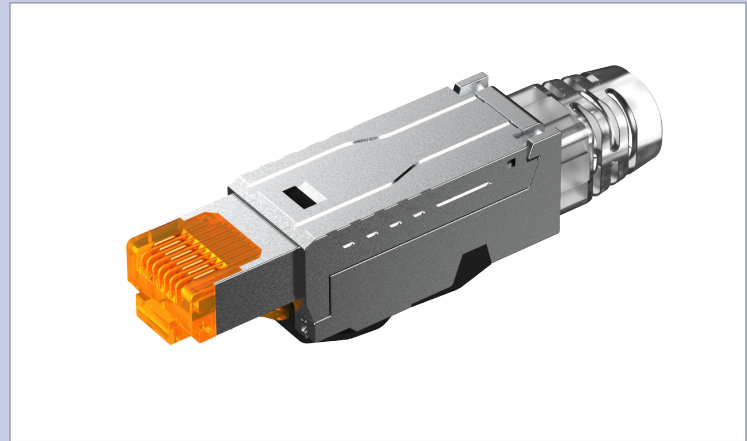
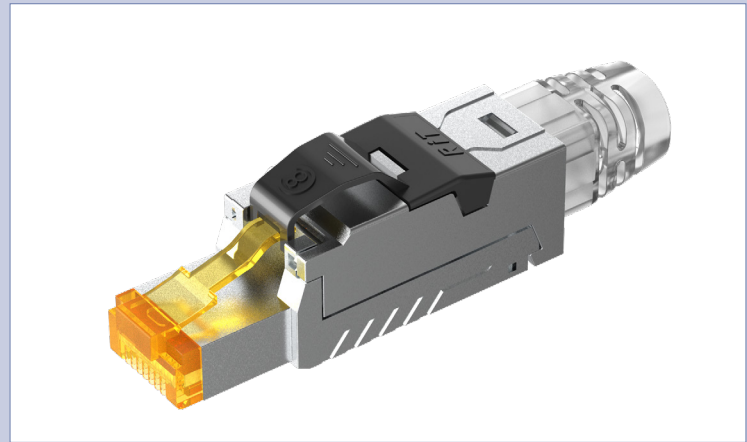
The product is designed as per the latest standard ANSI/TIA-568.2-E and performance is aligned with the modular plug terminated link standard mentioned.

## TECHNICAL SPECIFICATIONS

Cat.6A Performance to supports high-speed protocols: 10GBASE-T up to 100 Meters

Supports 22-24 AWG solid and stranded wires and up to  $\varnothing$  8.5mm O.D. cables

Product is designed to reduce the management of cords and the plugs can be used in cases where there is need to terminate a plug that is directly plugged into a device. This is generally done to service a security camera, Wireless equipment or devices which is not often moved or rearranged.



## PRODUCT FEATURES

- Complies to ANSI/TIA-568.2-E :2024
- Fully backward compatible with Category 6
- Easy to Read Wiring Label to Facilitate Installation
- Fully shielded metal housing provides immunity against EMI and alien crosstalk
- Gold-Plated Nickel Contacts Provide Corrosion Resistance and Signal Conductivity
- Meets IEC 60603-7 requirement



## ELECTRICAL SPECIFICATIONS

RJ45 Plug Metal covers	Zinc die-casting with nickel plated
RJ45 Plug plastic housing	PC, UL 94-V0, Color : Clear
RJ45 Plug contacts	Phosphor bronze with nickel plated
RJ45 Plug Contacts finish:	50 micro-inch gold plated on plug contact area
RJ45 Plug Boot	PC, UL 94-V0, Color : Clear
IDC Plastic housing:	PC, Color: White, UL 94V-0
IDC Metal Contacts:	Titanium Copper, Tin plated
Grounding spring contact:	Zinc die-casting with nickel plated
PCB:	FR4, UL94 V0
EMI Shielding:	Back adhesive Copper foil tape
Plastic Wire Organizer:	PC, Color: White, UL 94V-0
Dimensions (WxDxH)	13.8mm x63.0mm x18.4mm
RoHS	Yes
Wiring:	T568A & T568B
RJ45 Jack Dimensions:	According to IEC 60603-7-5
Rj45 Plug Insertion force:	3.1 Kg Max according to IEC 60603-7-81
Patch Cord retention strength:	7.7 Kg Max. according to IEC 60603-7-5
IDC Conductors:	Accepts 22-24 AWG solid and Stranded wires
Operating Temperature:	-10 °C to +60 °C per ISO/IEC 11801-9901 Class1
RJ45 Jack Durability:	≥750 Plug-Jack mating cycles per IEC 60603-7-81
IDC Durability:	22AWG ≥ 5 Termination cycles 23-24AWG ≥ 20 Termination cycles
Reference Standards:	RoHS Compliant ISO/IEC 11801; ANSI/TIA/EIA-568.2-D IEC 60512-99-002 PoE type III 60W and IV 100W IEC 60603-7

## ORDERING INFORMATION

P/N	DESCRIPTION
R3296001	CAT6A STP Field Termination Plug

4557650\_A1