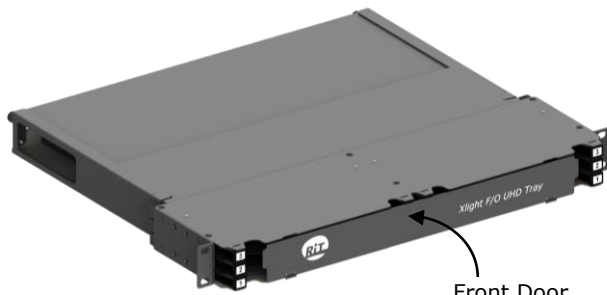




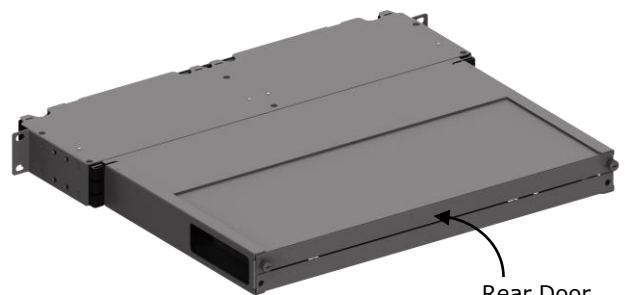
Xlight F/O UHD Cassette Trays

Description



Front View

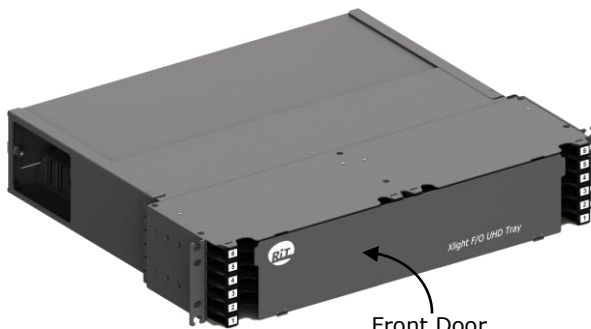
Front Door



Rear Door

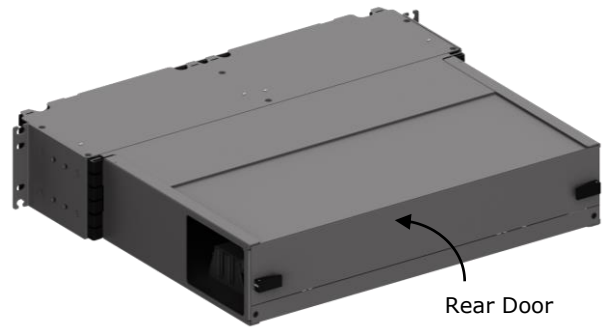
Rear View

Xlight F/O UHD Trays, 1U



Front View

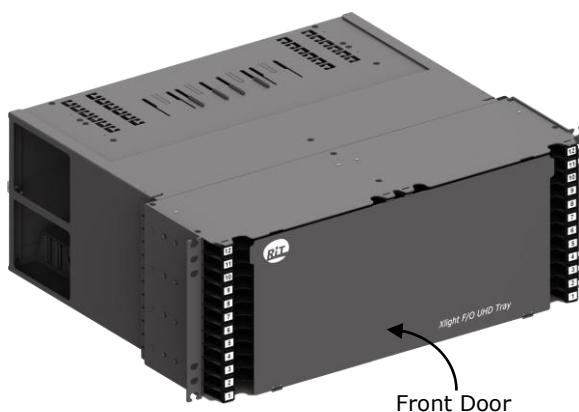
Front Door



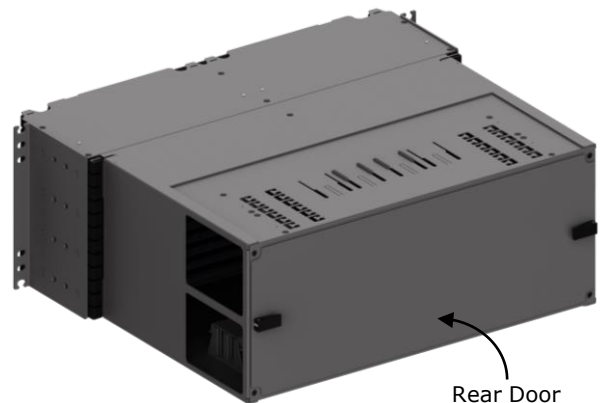
Rear Door

Rear View

Xlight F/O UHD Trays, 2U



Front Door

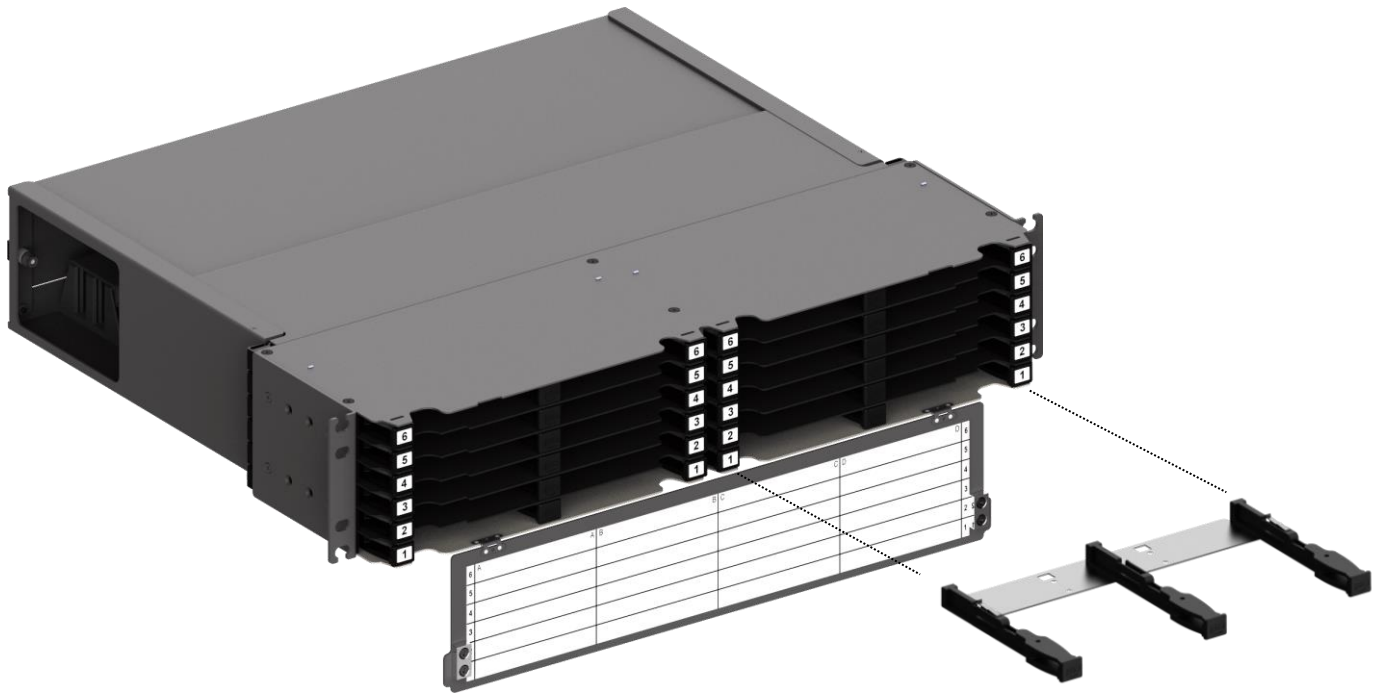


Rear Door

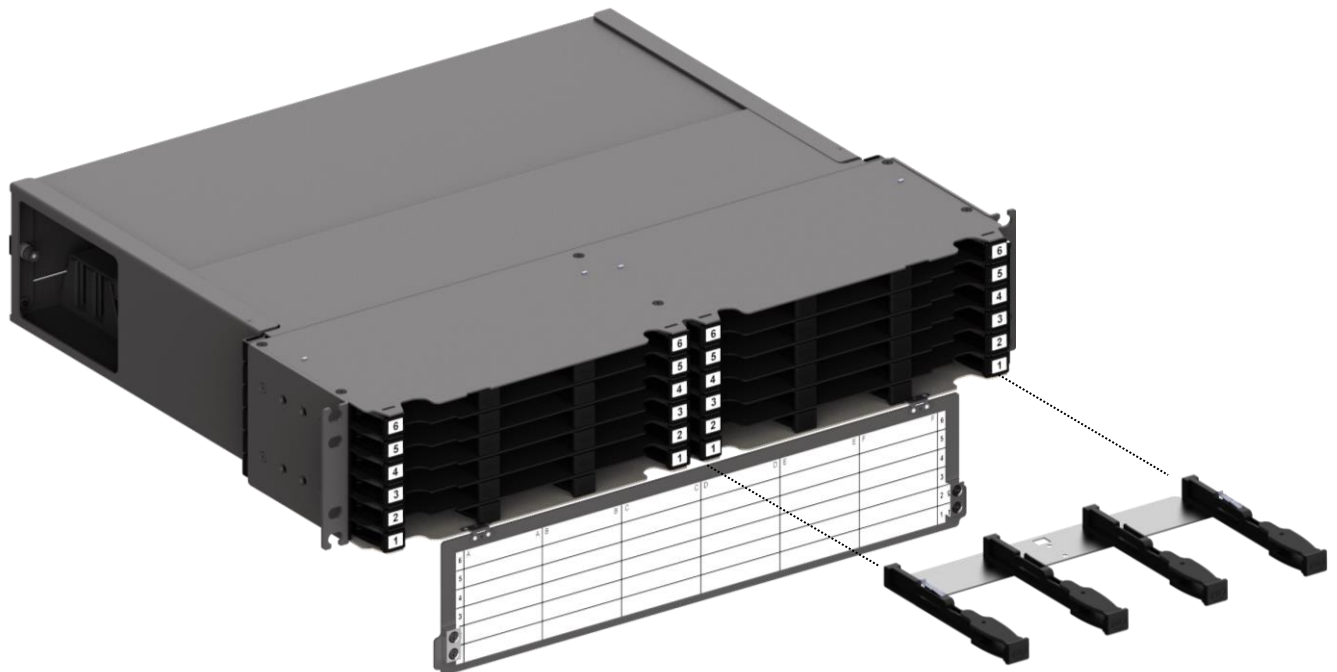
Xlight F/O UHD Trays, 4U



Xlight F/O UHD Cassette Trays



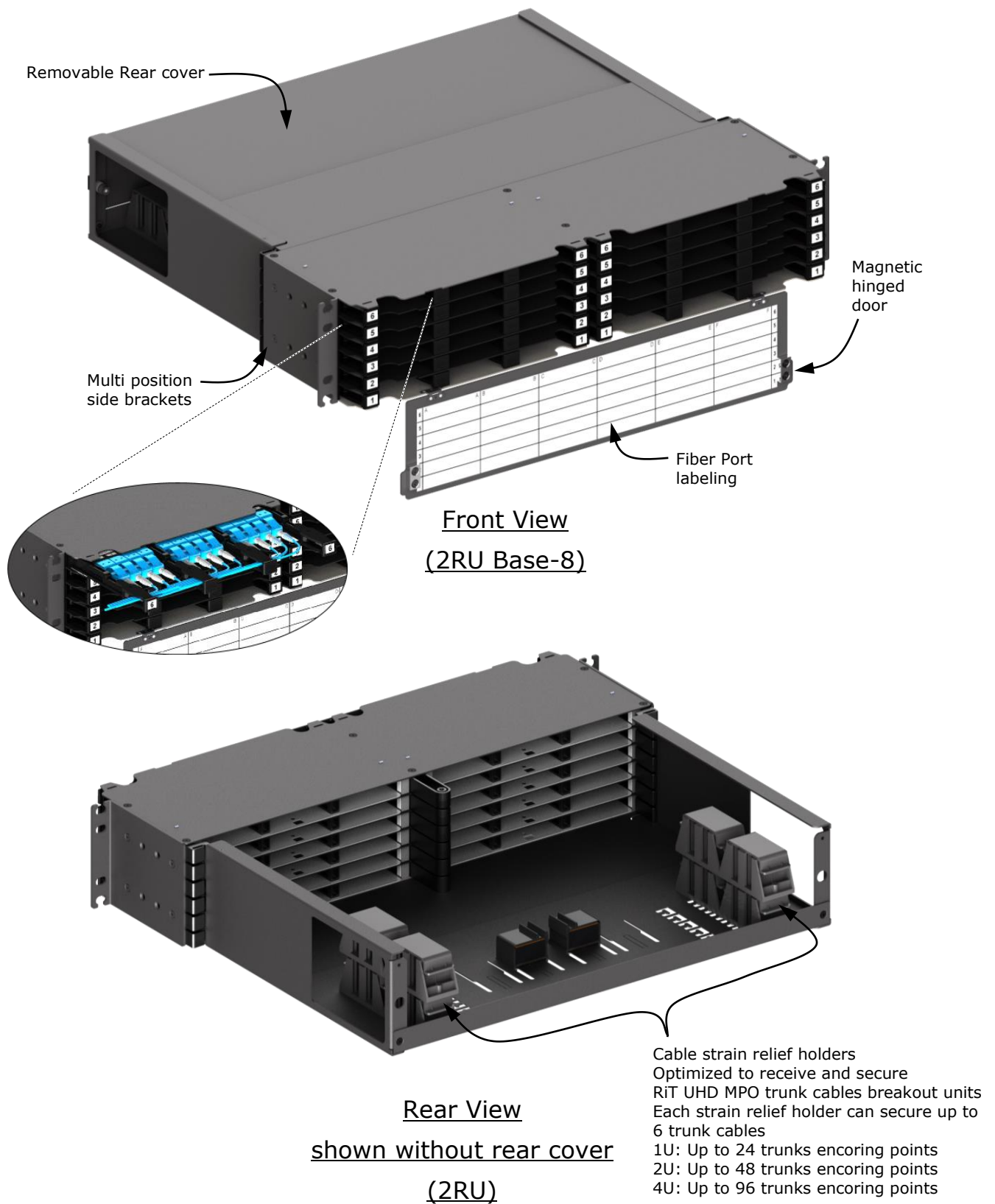
Xlight F/O UHD Tray, 2U, Base-12



Xlight F/O UHD Tray, 2U, Base-8



Xlight F/O UHD Cassette Trays

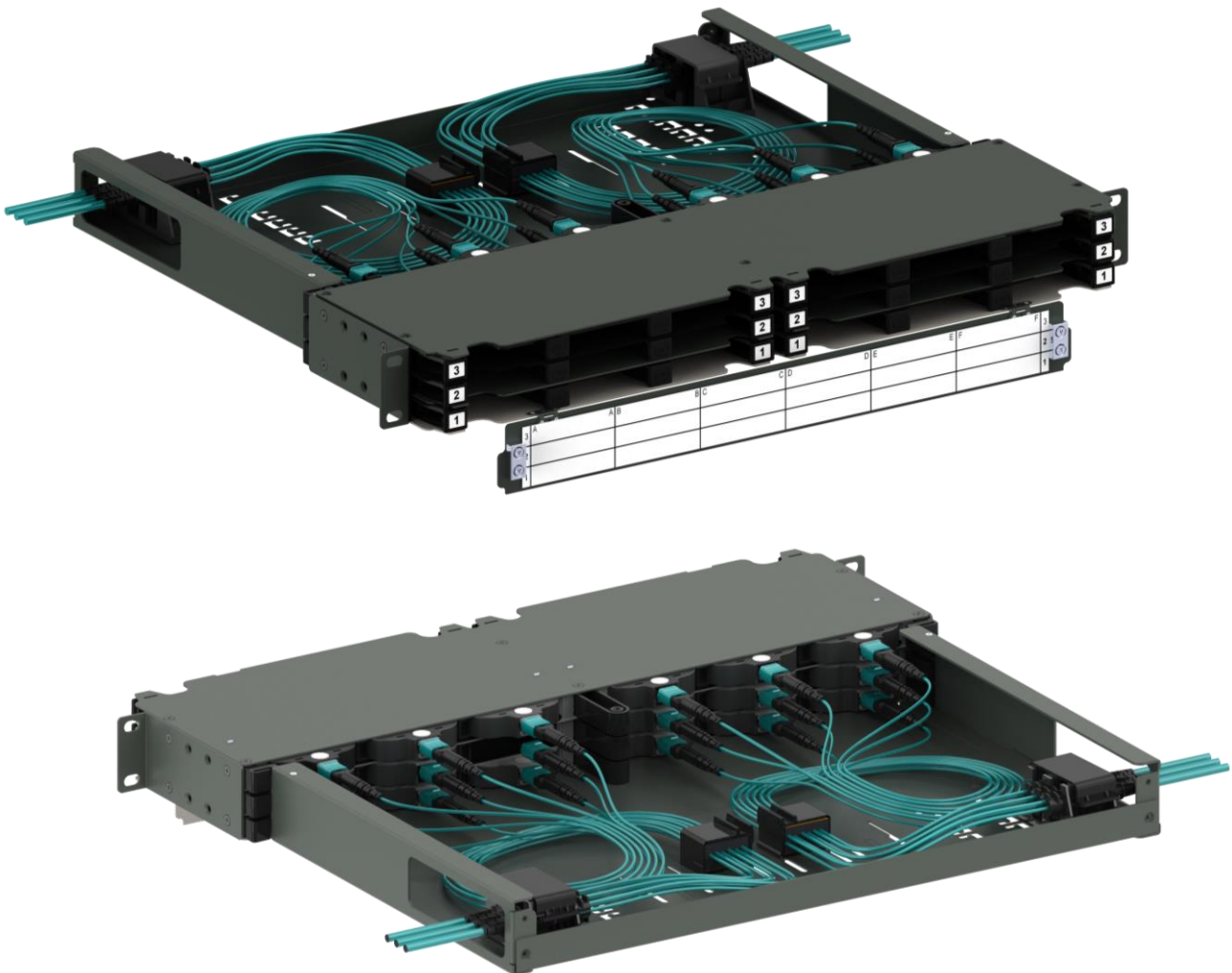




Xlight F/O UHD Cassette Trays

Features

- RiT F/O Ultra High-Density Cassette Trays are designed to offer high density in a limited space
144 LC fibers in 1RU, 288 LC fibers in 2RU and 576 LC fibers in 4RU
- Supports interconnect and cross connect applications for data centers.
- Smallest footprint available in the market supports limited space and improved airflow cooling inside the cabinet
- Cassettes can be inserted from the front or back sides of the tray.
- Built-In front patch cables organizers and rear strain relief clips enable efficient cable management and maintenance.



Front & Rear view of Xlight F/O UHD, 1U, Base-8 Tray Fully loaded with LC-MTP/MPO Base-8 Transition Cassettes and Trunk Cables



Xlight F/O UHD Cassette Trays

Features

- Easy access to trunk cable connectors from the front without the need to remove any patch cords.
- Removable rear cable management door allowing easy access for maintenance and installation.
- Excellent fiber management, protection, and maintenance
- Innovative sliding cassette trays with magnetic locking mechanism
- Unit is designed to support both $\varnothing 2.0$ mm Uniboot and $\varnothing 2 \times 4$ mm Mini-Zip LC patch cords.
- Multi position mounting side brackets.
- Compatible with all RiT's F/O UHD Cassettes, patch cords and trunk cables
- No need for special patch cords with pull tab mechanism

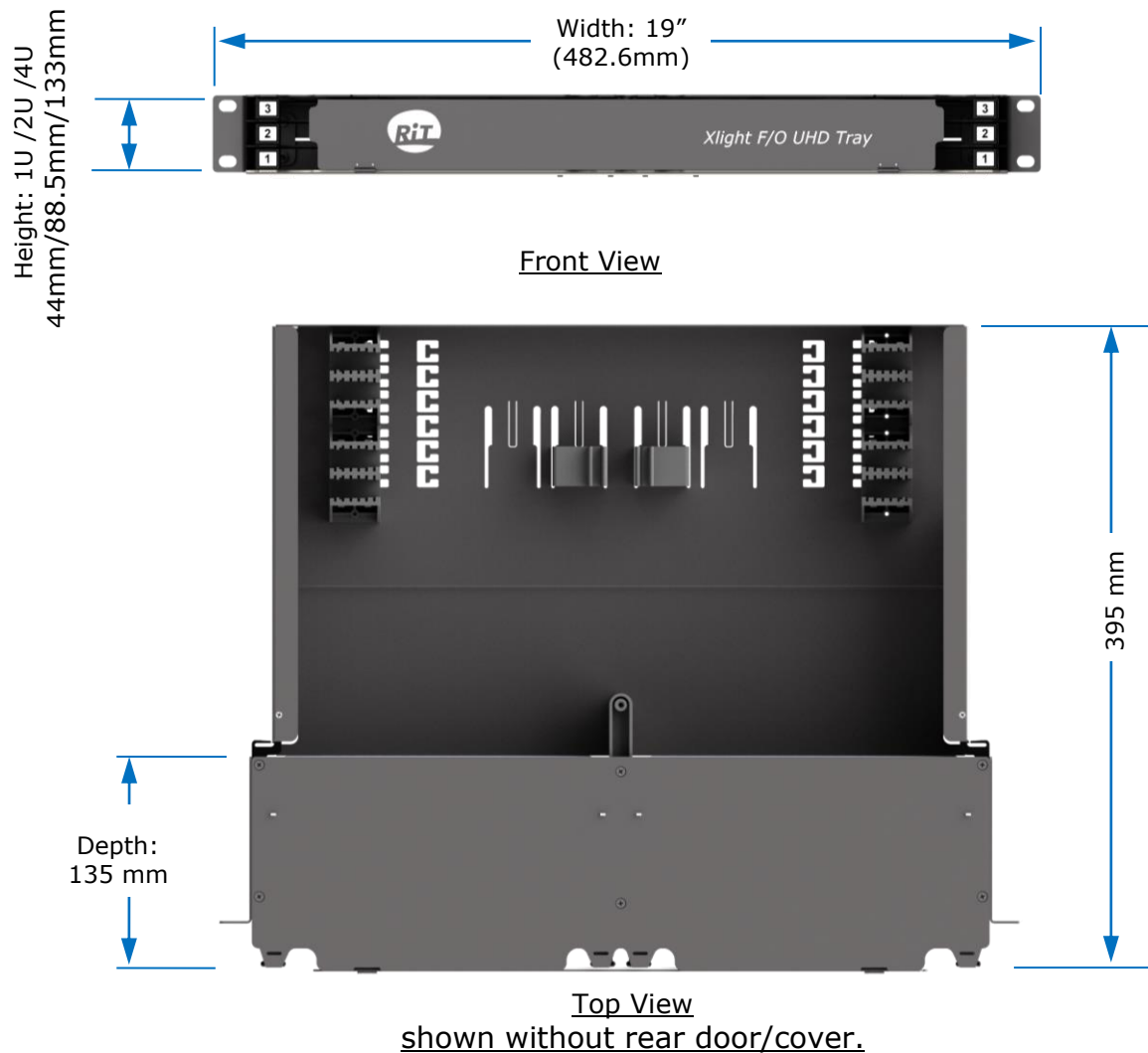
Specifications

| | |
|---------------------------------------|--|
| Trays Capacity | 1U Tray : 12 CASSETTES (BASE 12) / 18 CASSETTES (BASE 8) 2U Tray : 24 CASSETTES (BASE 12) / 36 CASSETTES (BASE 8) 4U Tray : 48 CASSETTES (BASE 12) / 72 CASSETTES (BASE 8) |
| Plastic Materials | PC/ABS Resin |
| Flammability Rate | Flame Retardant, UL94-V0 |
| Material of metal parts | Steel, Finish: Passivation |
| Paint finish | Electrostatic Epoxy paint |
| Color | Gray |
| Dimensions (HxWxD) | Height: 1U/2U/4U, Width: 19", Depth: 395mm |
| Minimum fibers bend controlled radius | 30 mm |
| Operating temperature | -20°to +60°C |
| Storage temperature | -25°to +70°C |
| Weight | 1U: 4.5 Kg, 2U: 7.5 Kg, 4U: 13.5 Kg |



Xlight F/O UHD Cassette Trays

Technical drawing



Ordering Information

| Number | Description |
|---------------|--|
| RFHDF-1U-12-R | Xlight F/O UHD Cassette Tray, 1U, Base-12, Regular |
| RFHDF-2U-12-R | Xlight F/O UHD Cassette Tray, 2U, Base-12, Regular |
| RFHDF-4U-12-R | Xlight F/O UHD Cassette Tray, 4U, Base-12, Regular |
| RFHDF-1U-8-R | Xlight F/O UHD Cassette Tray, 1U, Base-8, Regular |
| RFHDF-2U-8-R | Xlight F/O UHD Cassette Tray, 2U, Base-8, Regular |
| RFHDF-4U-8-R | Xlight F/O UHD Cassette Tray, 4U, Base-8, Regular |