

Vylon 75

*Setting a New Standard for
Large Diameter Sanitary Sewer Pipe*



Vylon[®] Pipe

Vylon® Pipe

For more than 25 years Vylon® has been the leading manufacturer of closed profile PVC pipe for large diameter sanitary sewer systems. However, in recognition of customer demand for a more rugged, higher stiffness product Vylon 75 was developed, meeting this demand unlike any other sanitary sewer pipe product.



The Design

Beginning in 1985, Vylon Pipe began to use and further develop the technology to manufacture a high capacity, closed profile PVC pipe for sanitary sewer systems. The pipe's smooth inner and outer walls, with an I-beam profile construction, allows for a more cost effective use of material in pipe available in diameters of 21" through 54" while still assuring superior performance. Manufactured with a pipe stiffness of 46 psi (PS 46), the first pipe was installed in 1987, with millions of feet installed since then.



Vylon 75

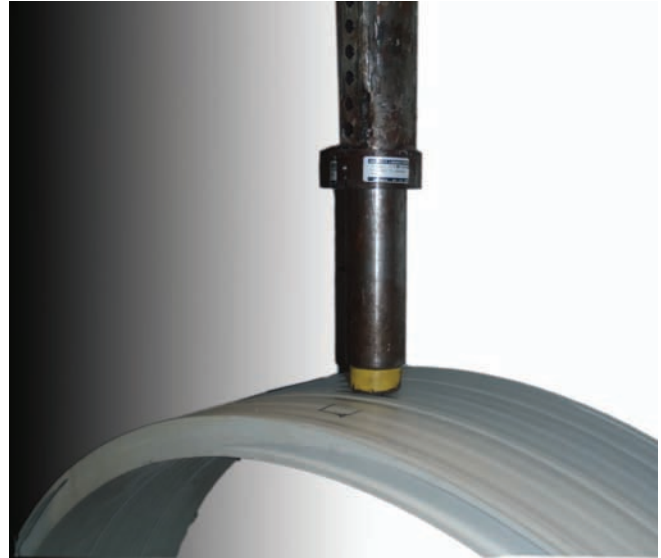
But now specifiers have a better choice with Vylon 75, a product with a pipe stiffness of 75 psi, or 63% higher than a PS 46 product. Through innovative product changes in the profile and state-of-the-art manufacturing processes, Vylon Pipe is able to bring you the most advanced sanitary sewer product available today: **Vylon 75!**



Vylon 75 Features

Higher Impact Resistance

Vylon 75 far exceeds the requirements of ASTM F1803 (Standard Specification for Poly Vinyl Chloride Closed Profile Gravity Pipe and Fittings Based on Controlled Inside Diameter). In addition to the higher pipe stiffness of 75 psi (ASTM F1803 requires 46 psi), Vylon 75 is a more rugged, robust product, with a much higher impact resistance than is required by ASTM F 1803 and other ASTM standards for sanitary sewer pipe.



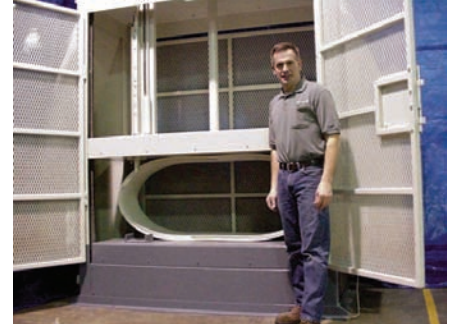
Ease of Installation

Vylon 75 should be installed in accordance with ASTM D 2321 (Standard Practice for Underground Installation of Thermoplastic Pipe for Sewers and Other Gravity-Flow Applications) and the Vylon Pipe Installation guide. Like any flexible pipe product, Vylon 75 deflects slightly under load to develop support from the surrounding backfill. Properly installed, deflection of Vylon 75 will be well under acceptable levels at typical interceptor sewer depths.



Uncompromising Quality

With Vylon 75 you can expect the same high level of quality that you have always obtained with Vylon Pipe. For example, even with the higher stiffness Vylon can meet the rigorous requirements of a pipe flattening test, requiring that a pipe must be able to carry load up to 30% deflection without buckling, providing a safety factor of at least 4 based on expected long term deflection levels.



Leak Free Gasket

Vylon 75 uses the same high performance joint design that has shown outstanding performance for more than 25 years. With Vylon's unique four-finned gasket permanently fixed to the bell you can be assured of leak free joints for a properly installed joint, and proper installation is easy with Vylon's two assembly marks clearly shown and the exterior gasket "J-leg" remaining clearly visible during assembly.

Superior Joint Design

Vylon 75 is manufactured to exceed the requirements of ASTM D 3212 (Standard Specification for Joints for Drain and Sewer Plastic Pipes Using Flexible Elastomeric Seals), which requires that the pipe pass a 10.8 psi hydrostatic test with zero leakage, even under conditions of a 5% point load deflection within one foot of the joint and with the pipe aligned at an angle to allow for curvature. Vylon 75 is tested under the same conditions but at 22 psi, assuring you of watertight performance even at deeper interceptor sewer depths.



High Flow Capacity and Corrosion Resistance

Vylon 75 has a Manning's "n" value of 0.009 assuring high capacity flow, and the possibility of using a smaller diameter pipe to meet your capacity requirements compared to other pipe materials. Made out of PVC, you can also be assured that Vylon 75 will not deteriorate when exposed to a typical sanitary sewer environment while providing the same high quality of flow for years to come.

Simply put, Vylon 75 is the best choice for today's sanitary sewers, given its superior performance, long life and cost effective design.