



**saxen.**  
COMMERCIAL INTERIOR SOLUTIONS

## who we are.

### **Saxen creates beautiful commercial interiors**

However you use your commercial space - for offices, hospitality, student accommodation, hotels, care homes, schools, universities, cinemas, e-sports arenas - we aim to make the full creative process seamless from concept to completion.



# saxen.



## what we do.

### **Saxen creates beautiful commercial interiors**

We provide space planning, move management, fit-out services and furniture solutions for offices, hospitality, healthcare and education sectors.

We also offer an extensive selection of UK and European furniture products and designer preloved furniture that has been refurbished to like new.

Our services can address your needs at any stage of project development:

- 
- | **Space planning.**
  - | **Sample & concept mood boards.**
  - | **Furniture selection & samples.**
  - | **Refurbished furniture.**
  - | **Sustainable solutions.**
  - | **Furniture installation.**
  - | **Logistics & storage.**
  - | **Move management.**
  - | **Furniture take back scheme.**
  - | **Reupholstery and refurb service.**

## **our philosophy.**

Influencing a better workspace through sustainable design, product knowledge, and understanding the needs of clients and their people.



# promoting wellbeing.

**In order to enhance employee wellbeing, we evaluate the level of support and comfort provided by your environment and seek opportunities for improvement.**

Creating an environment that promotes wellbeing and happiness within an organisation can result in enhanced productivity, superior performance, reduced staff turnover, and the ability to attract top-tier talent to the workplace.





## return on investment.

**By 2025, Millennials will make up the majority of the workforce.**

Different generations have different needs, and recent studies indicate that millennials prioritise their workplace comfort more than any other generation, even over salary. We create environments that draw the best and the brightest.

# agile working.

**We can help revitalise your organisation with agile design solutions to foster innovation and drive growth.**

By establishing different zones within the workplace, you can guarantee your employees' absolute autonomy and adaptability to work at their preferred location and time.





# human-centric design.

**We go beyond functional considerations and seek to create environments that promote positive experiences, social interaction, and a sense of connection to nature.**

Positive architecture puts human needs, experiences, and wellbeing at the centre of the design process. It considers factors such as comfort, accessibility, safety, and user satisfaction to create spaces that enhance the quality of life.

Saxen interiors incorporate:

- | **Human-centred design.**
- | **Biophilic design.**
- | **Wellbeing and health.**
- | **Social interaction and community.**
- | **Sustainability and resilience.**
- | **Adaptive and inclusive design.**
- | **Cultural identity and sense of place.**





# inclusive environments.

## Shaping spaces for all.

Increase productivity by creating an environment where employees feel valued, respected and included, ensuring everyone has equal opportunities and feel they can contribute fully.





## zoning.

**Inspiring work, meeting, collaborative and breakout zones to suit your organisation's needs.**

There has been an increase in the implementation of zoning techniques to maximise open spaces within the office. This is accomplished by incorporating versatile elements such as flooring, partitioning, and even biophilic design.

# who we work for.

From small start-ups to large corporations, Saxen has a wealth of experience helping clients create better spaces.

- | BAM Construction
- | Baker Hicks
- | Blyth & Blyth
- | University of Strathclyde
- | Abertay University
- | Mitie
- | AE Com
- | SDS
- | Grissan Group
- | Harper Collins
- | Ashurst LLP
- | SEC Glasgow



focus on  
sustainability.



**Sustainability at our heart.**

Saxen curates products from brands that champion environmental responsibility, sourcing innovative materials like recycled PET, agricultural waste, repurposed clothing, hospital plastics, and even sheep's wool.



**focus on  
sustainability.**



**Sustainability  
at our heart.**

We are committed to sustainable furniture solutions that align with our customers' values and the future of our planet.



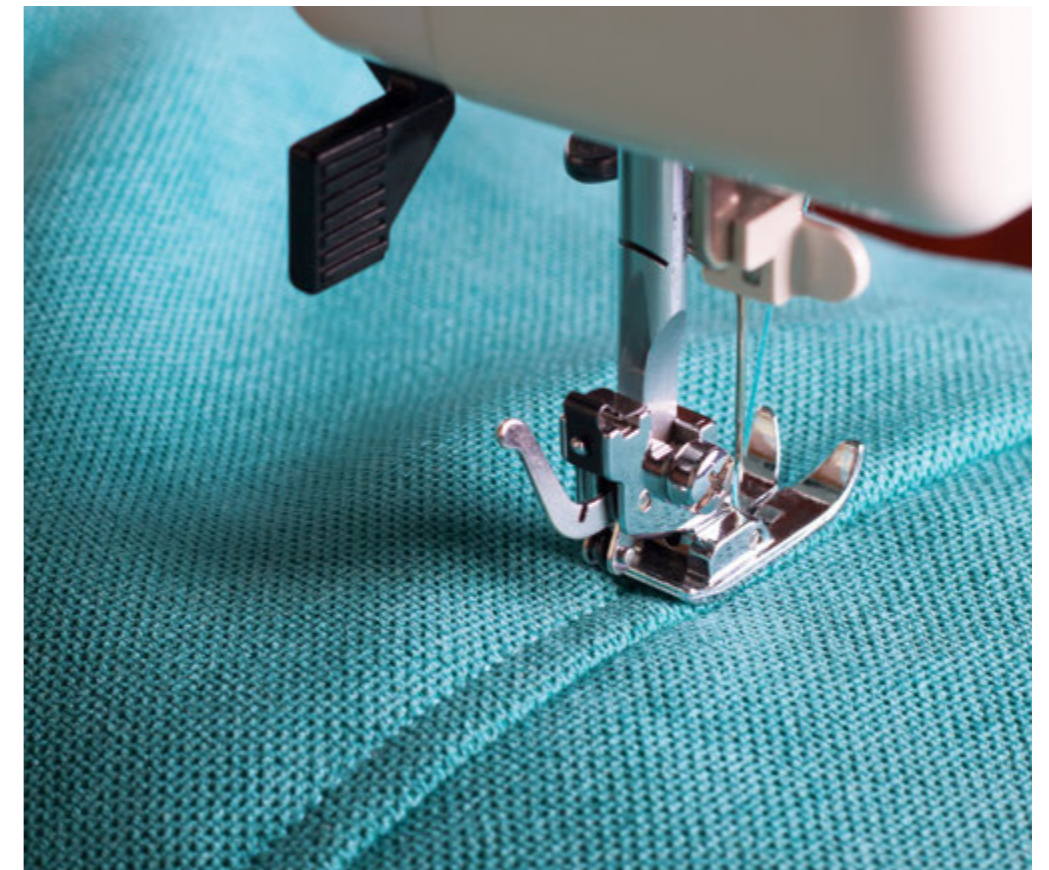
# focus on sustainability.

## **Regener8: Reuse, Rework, Recycle.**

Saxen's Regener8 initiative helps reduce your environmental footprint by providing services to collect end-of-life furniture. We divert products from going to landfill by finding a suitable place for a second life or by breaking down the products into their component parts to recycle the materials.

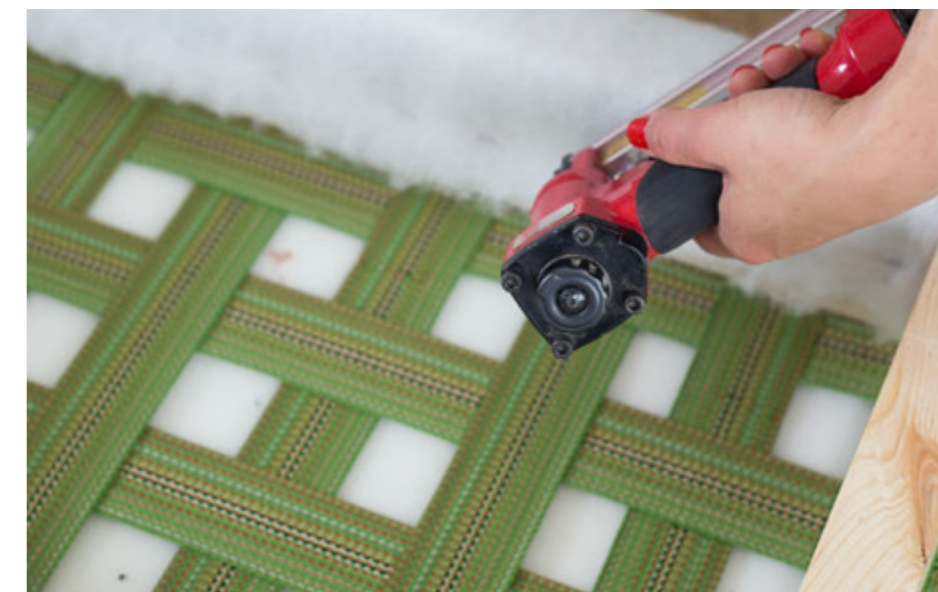


**focus on  
sustainability.**

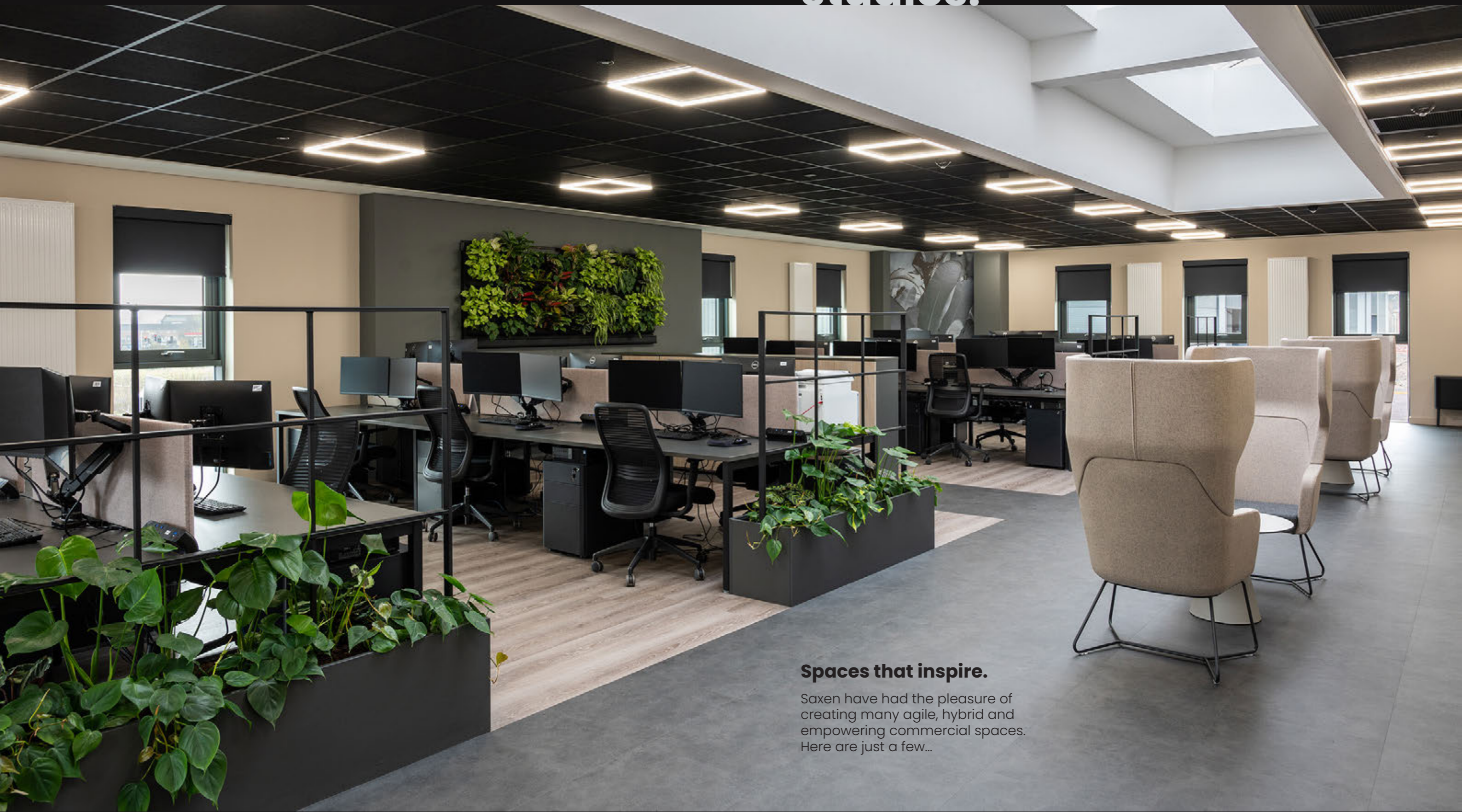


**Refurbish: giving office furniture a second life.**

Saxen believes in extending the life of office furniture through our sustainable refurbishment and repair service. Instead of replacing worn or damaged items, we offer expert restoration that not only revives the functionality and appearance of your furniture but also reduces waste and minimises environmental impact.



# case studies.



## **Spaces that inspire.**

Saxen have had the pleasure of creating many agile, hybrid and empowering commercial spaces. Here are just a few...



**Saxen was involved in the design and implementation of the interior solution for the impressive new Frontline Safety Glasgow Headquarters.**

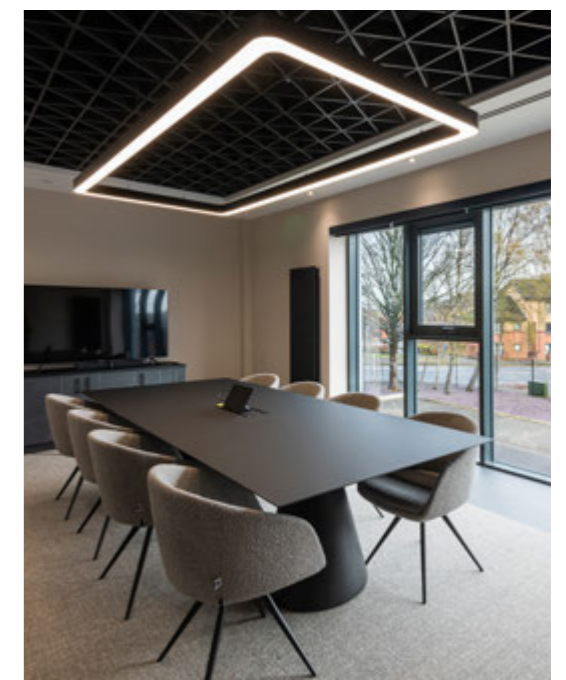


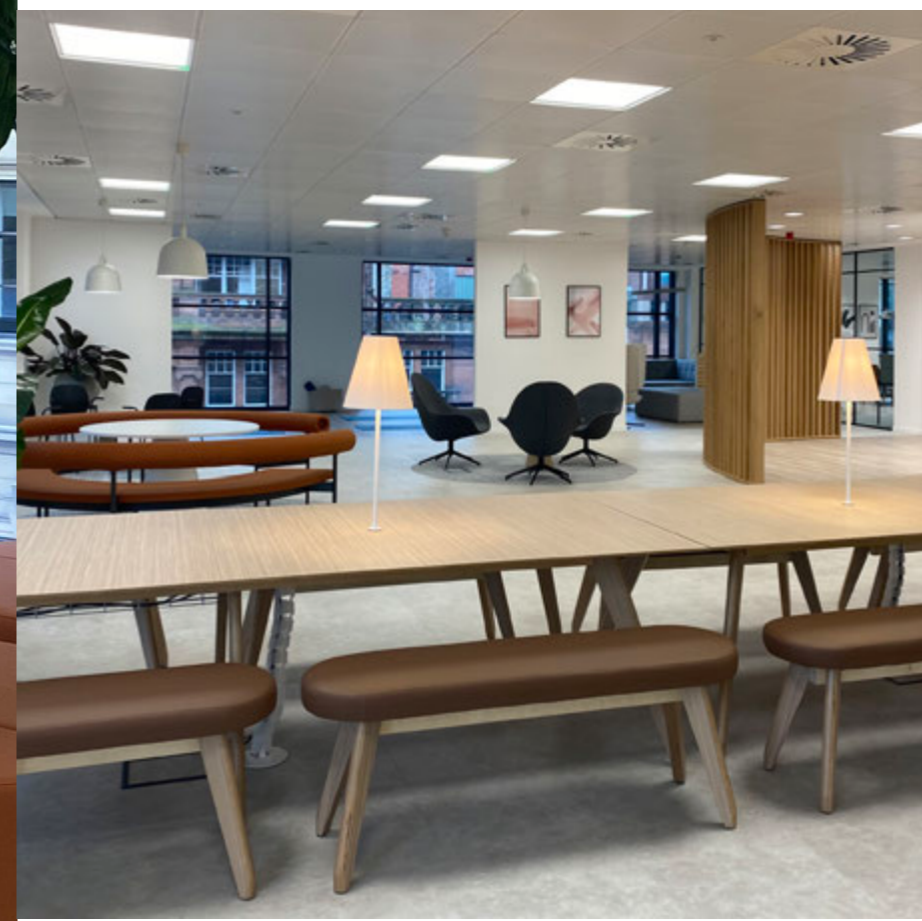
## Frontline.



### case study

Saxen integrated bespoke solutions from factories in Scotland's central belt to meet specific needs in different areas. This included tailor-made storage units for the Boardroom/Think Tank collaboration space, as well as a spacious kitchen island.





# Ashurst LLP.

## case study

Ashurst is a multi-national law firm whose core values centre around delivering through collaboration. They envisaged a working environment that would reflect their core values to create a truly integrated and collaborative workplace for all.





This project was nominated for the Mixology North Workplace Interiors Award, 30-70k sq. feet category, put forward by the architects Wellwood Leslie.



# Strathclyde University Lord Todd



Saxen redesigned an underutilised central space in Strathclyde University's Student Village to become a vibrant, flexible, and sustainable area.



### case study

We focused on zoning the large, open area to create a spaces for relaxation, dining, collaboration, and productivity. The new design includes a lounge, coffee shop, games area, theatre, and garden room.

Saxen incorporated sustainable furniture, acoustic solutions, and biophilic elements to align with the university's functional goals. The colour palette was chosen to bring warmth to a previously cold environment, while the finishes emphasise natural materials, inclusivity, and a calming, human-centered atmosphere.

Todds has become a vibrant, flexible, and sustainable space.



# working together.

## For you; with you.

Get in touch to find out how we can work together, and let us guide you through the whole process. Our showroom, offices, and refurbishment studio are located just south of Glasgow, and our team would love to welcome you and show you around.

Drop us an email at [enquiries@saxen.com](mailto:enquiries@saxen.com) or call 01560 329 916 to organise a meeting.

saxen.



