



SPI STRUCTURAL
PRESTRESSED
INDUSTRIES, INC.

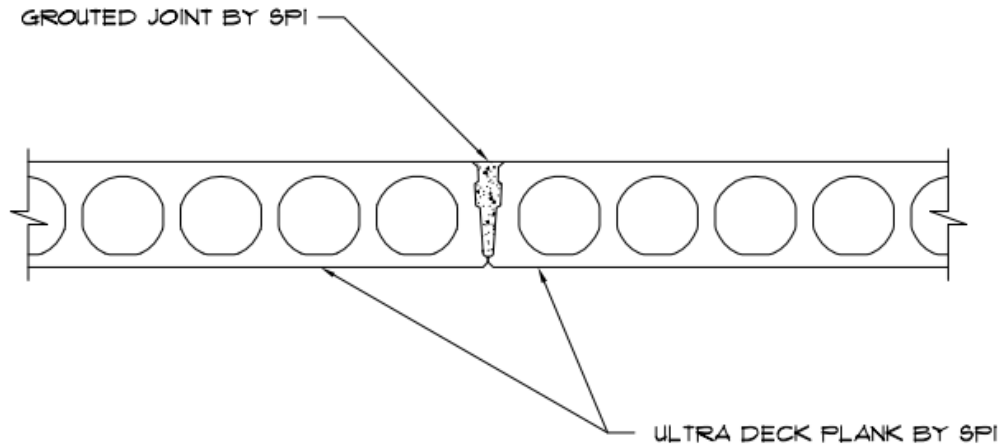


STANDARD ULTRA DECK HOLLOWCORE PLANK DETAIL

11405 N.W. 138th ST Medley, Florida 33178

Ph: (305) 556-6699 Fax: (305) 556-9696

www.spimiami.com



NOTE:

MIN. GROUT STRENGTH TO BE 4000 PSI
 IN 28 DAYS UNLESS NOTED OR SHOWN
 OTHERWISE. IT SHALL BE A MIXTURE OF
 NOT LESS THAN ONE PART PORTLAND
 CEMENT TO THREE PARTS FINE SAND.

**PLANK GROUTED JOINT CONNECTION
 STANDARD ULTRA DECK HOLLOWCORE PLANK DETAIL**

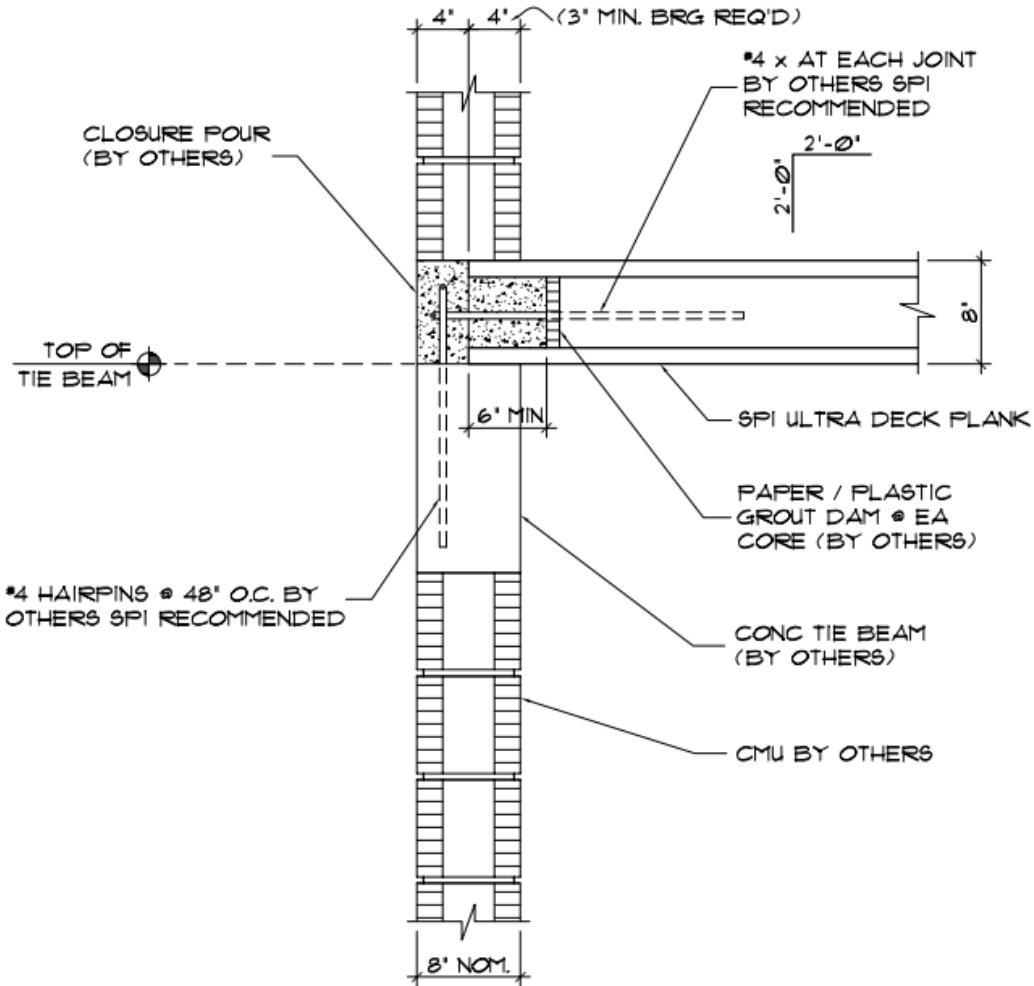


**JOB N':
 STANDARDS**

SHT. N':

2

ENGINEER OF RECORD
VERIFY IF ADEQUATE
FOR DIAPHRAGM



PLANK BEARING ON CIP TIE BEAM STANDARD ULTRA DECK HOLLOWCORE PLANK DETAIL



SPI STRUCTURAL
PRESTRESSED
INDUSTRIES, INC.

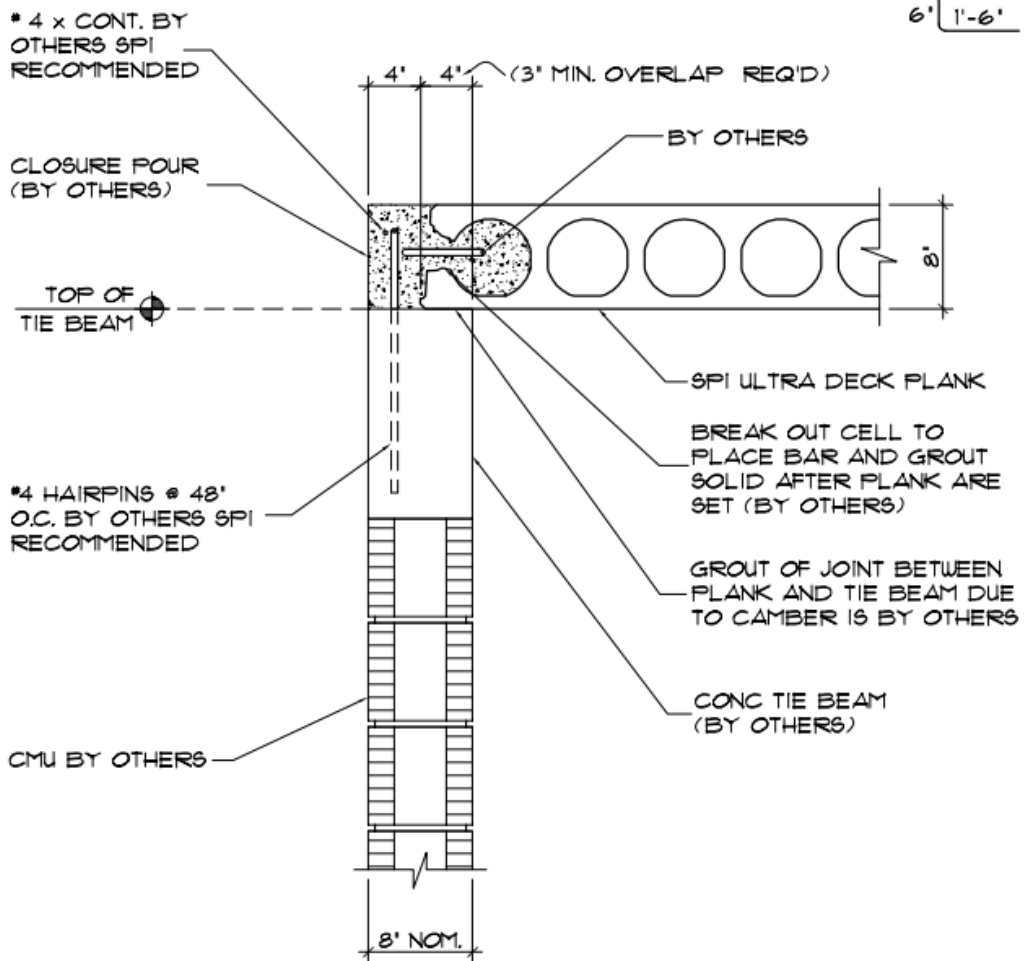
JOB N':
STANDARDS

SHT. N':

3

ENGINEER OF RECORD VERIFY
IF ADEQUATE FOR DIAPHRAGM

SPI RECOMMENDS #4 @
48" O.C. FOR STABILITY
2'-0"
6' 1'-6"



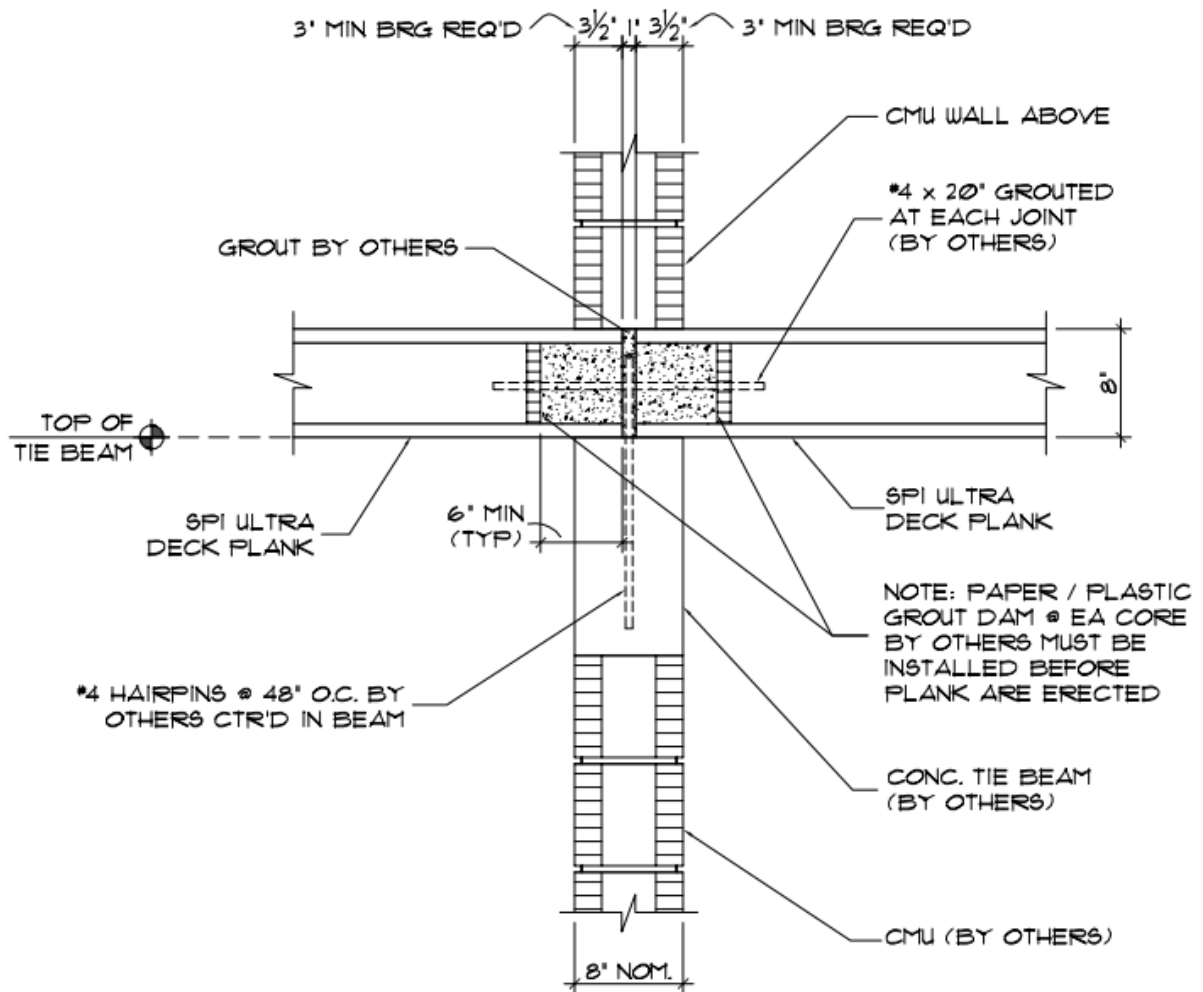
**PLANK PARALLEL TO CIP TIEM BEAM WITH REBAR ANCHORAGE
STANDARD ULTRA DECK HOLLOWCORE PLANK DETAIL**



JOB N':
STANDARDS

SHT. N':

4



PLANK BEARING EACH SIDE OF INTERIOR TIE BEAM STANDARD ULTRA DECK HOLLOWCORE PLANK DETAIL

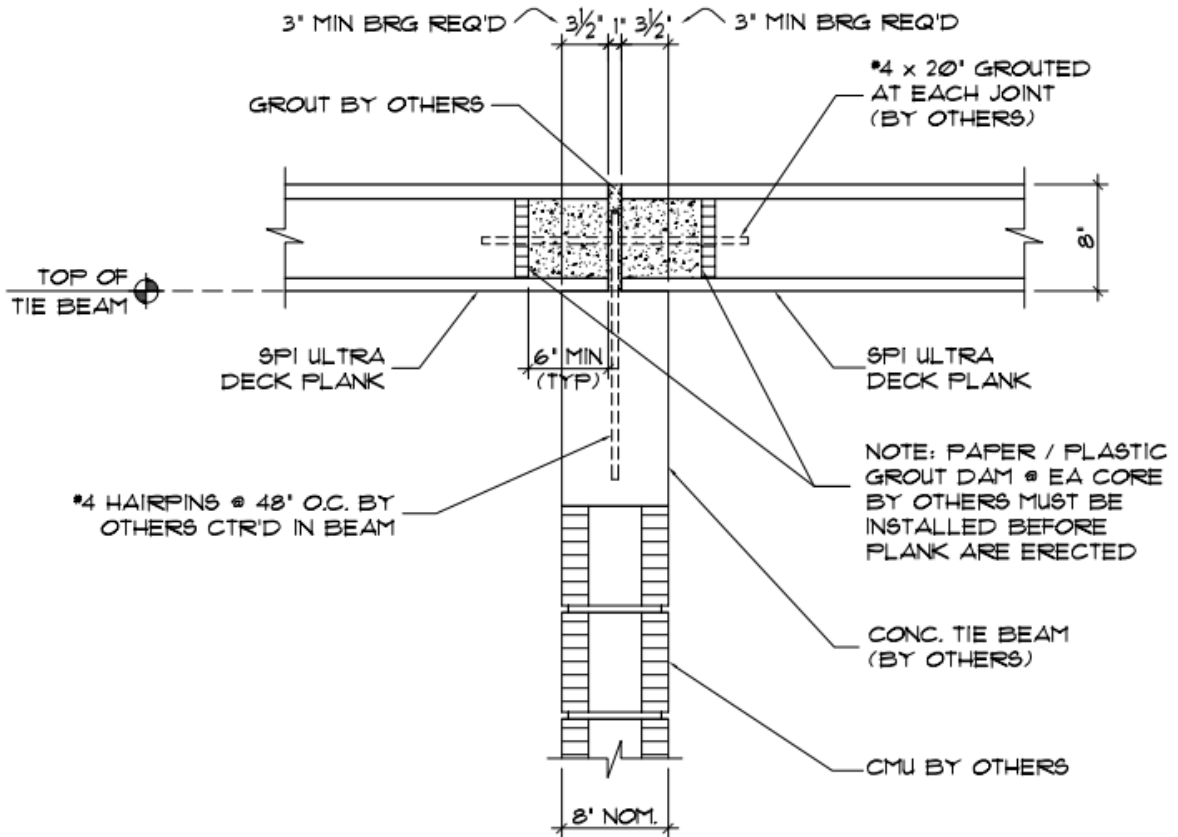


SPI STRUCTURAL
PRESTRESSED
INDUSTRIES, INC.

JOB N':
STANDARDS

SHT. N':

5



PLANK BEARING EACH SIDE OF INTERIOR TIE BEAM STANDARD ULTRA DECK HOLLOWCORE PLANK DETAIL

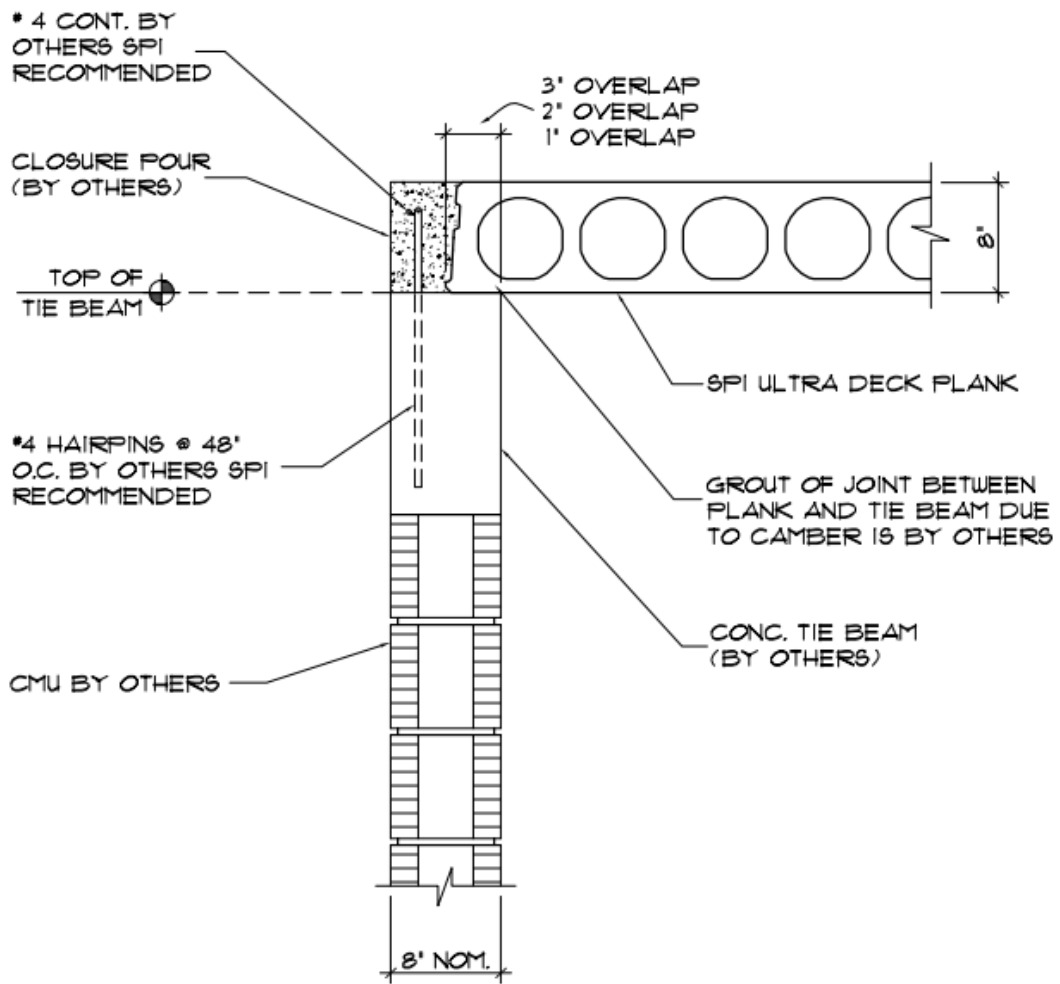


**JOB N':
STANDARDS**

SHT. N':

6

ENGINEER OF RECORD VERIFY
IF ADEQUATE FOR DIAPHRAGM



PLANK PARALLEL TO CIP TIE BEAM STANDARD ULTRA DECK HOLLOWCORE PLANK DETAIL

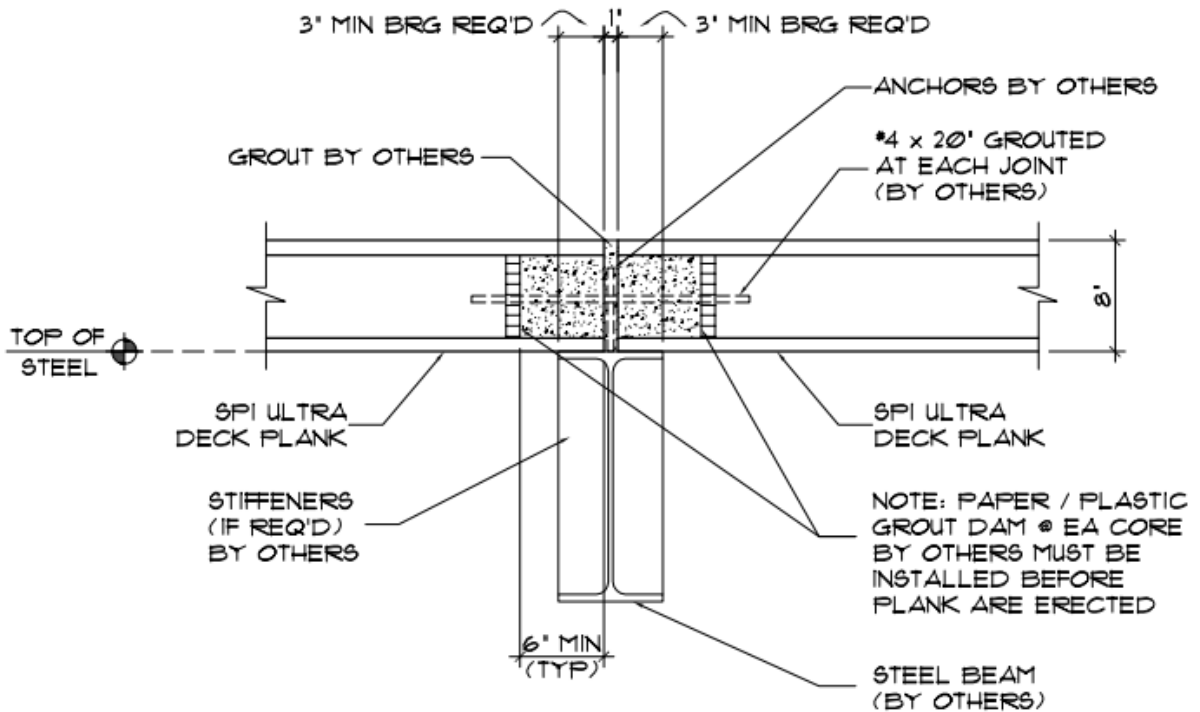


SPI STRUCTURAL
PRESTRESSED
INDUSTRIES, INC.

JOB N':
STANDARDS

SHT. N':

7

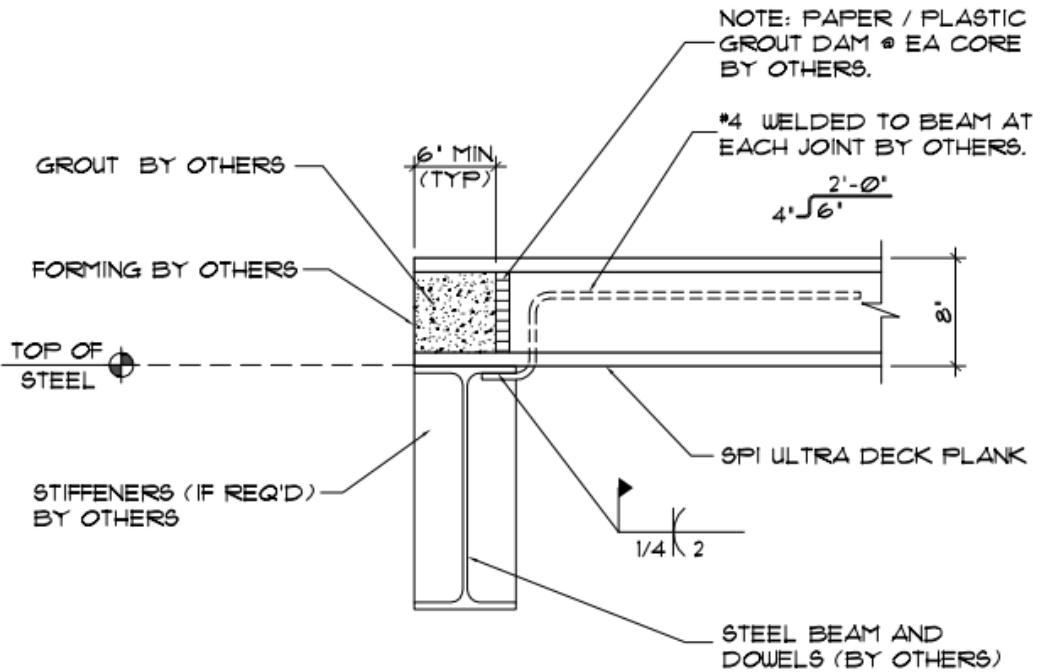


PLANK BEARING ESACH SIDE OF STEEL BEAM
STANDARD ULTRA DECK HOLLOWCORE PLANK DETAIL



JOB N':
STANDARDS

SHT. N':



PLANK BEARING ONE SIDE OF STEEL BEAM STANDARD ULTRA DECK HOLLOWCORE PLANK DETAIL

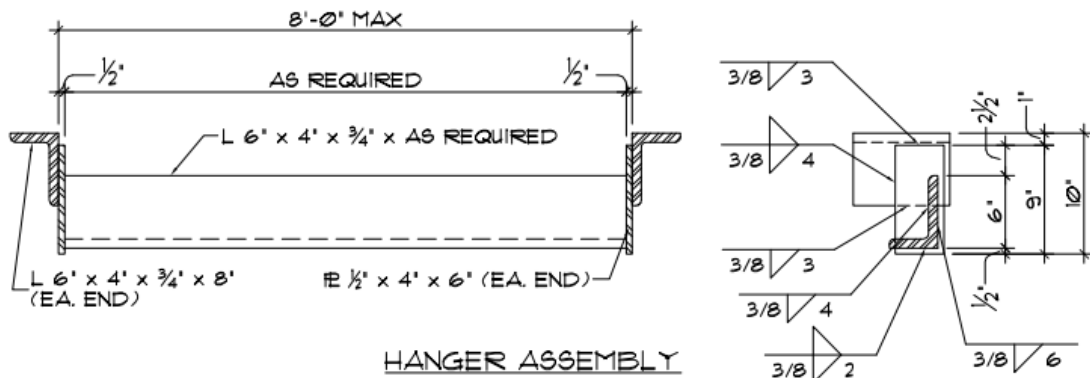
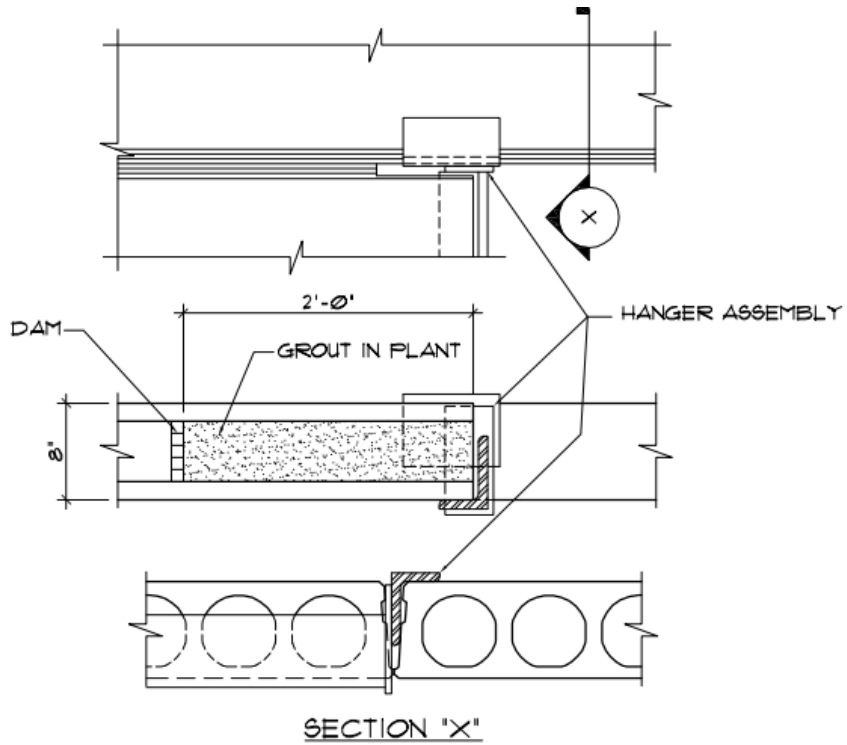


SPI STRUCTURAL
PRESTRESSED
INDUSTRIES, INC.

JOB N':
STANDARDS

SHT. N':

9



PLANK BEARING ON STEEL HANGER DETAIL STANDARD ULTRA DECK HOLLOWCORE PLANK DETAIL



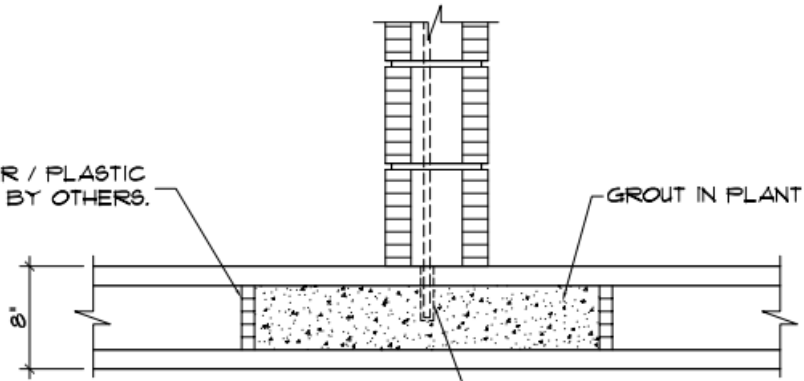
SPI STRUCTURAL
PRESTRESSED
INDUSTRIES, INC.

JOB N':
STANDARDS

SHT. N':

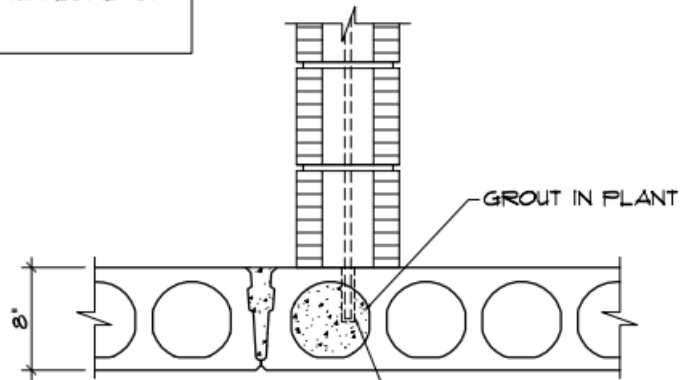
10

NOTE: PAPER / PLASTIC GROUT DAM BY OTHERS.



DRILL INTO SLABS MAX. OF 4' TO EPOXY REBAR SIZE AND SPACING AS REQUIRED. BARS PROVIDED AND PLACED BY OTHERS.

NOTE:
 CMU WALL ABOVE SLAB CAN ONLY BE NON-LOAD BEARING WALL WITH MAXIMUM LOAD OF 500 PLF.



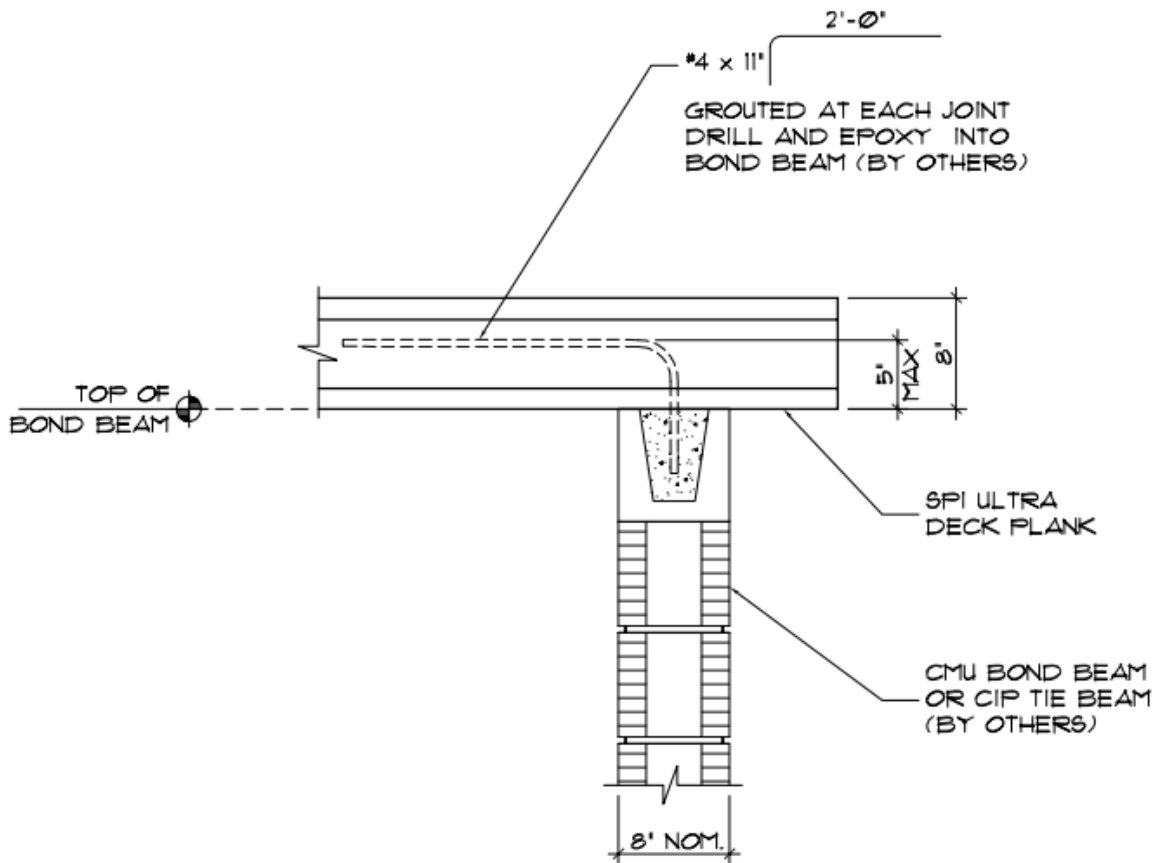
DRILL INTO SLABS MAX. OF 4' TO EPOXY REBAR SIZE AND SPACING AS REQUIRED. BARS PROVIDED AND PLACED BY OTHERS.

NON-LOAD BRG CMU ON PLANK WITH DRILLED DOWELS STANDARD ULTRA DECK HOLLOWCORE PLANK DETAIL



JOB N':
 STANDARDS

SHT. N':



PLANK CANTILEVER BEARING

STANDARD ULTRA DECK HOLLOWCORE PLANK DETAIL

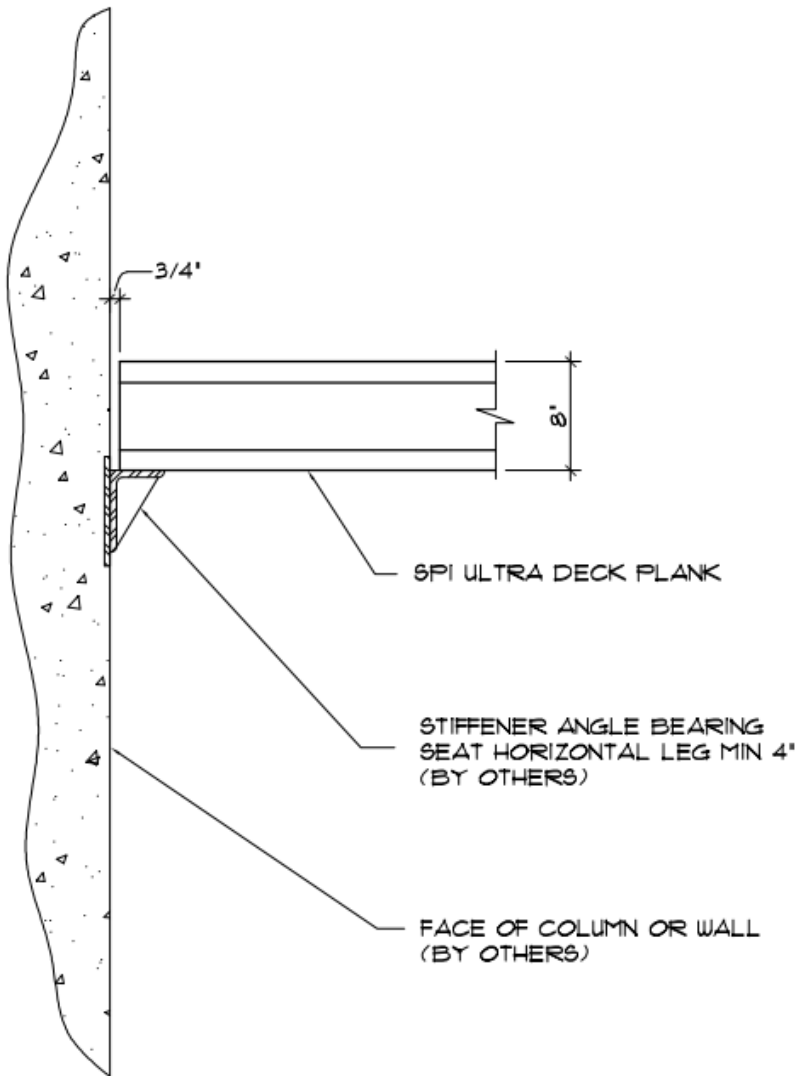


SPI STRUCTURAL
PRESTRESSED
INDUSTRIES, INC.

JOB N':
STANDARDS

SHT. N':

12



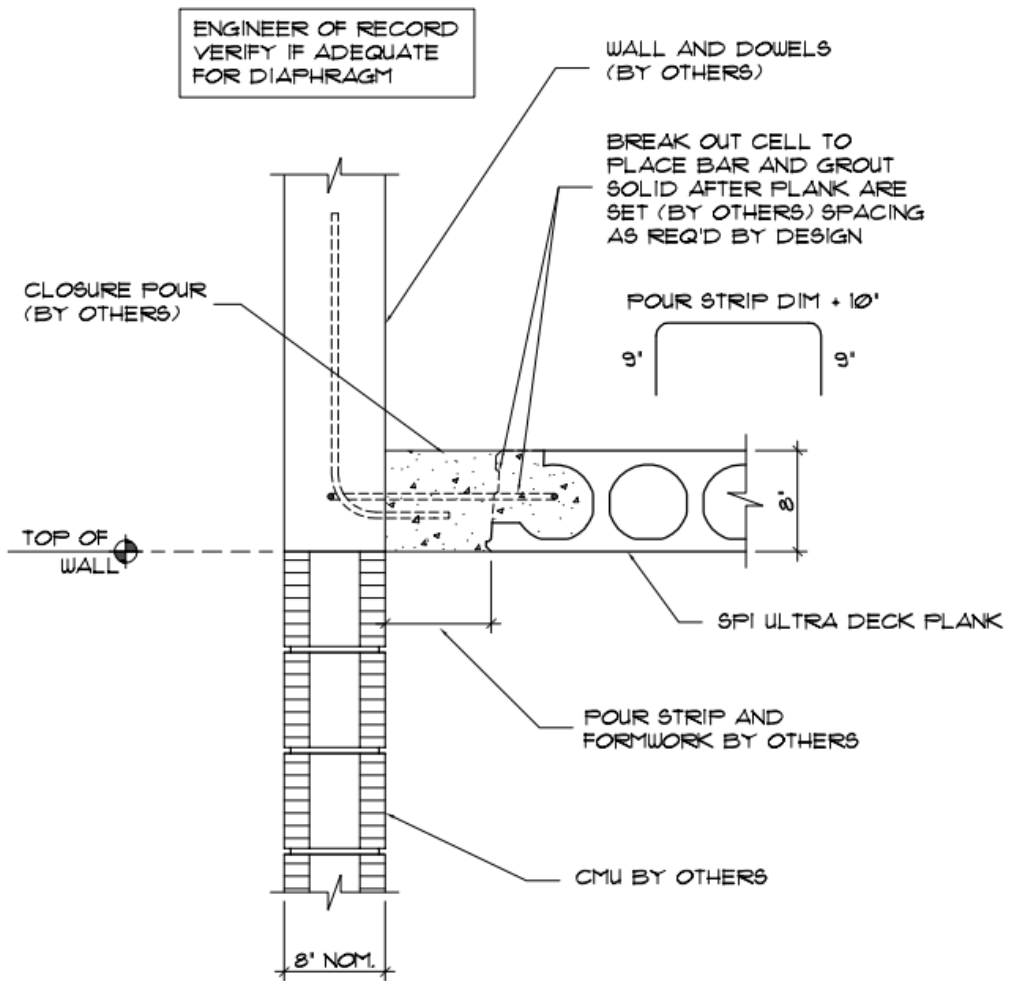
PLANK BEARING • ANGLE
STANDARD ULTRA DECK HOLLOWCORE PLANK DETAIL



**JOB N':
STANDARDS**

SHT. N':

13



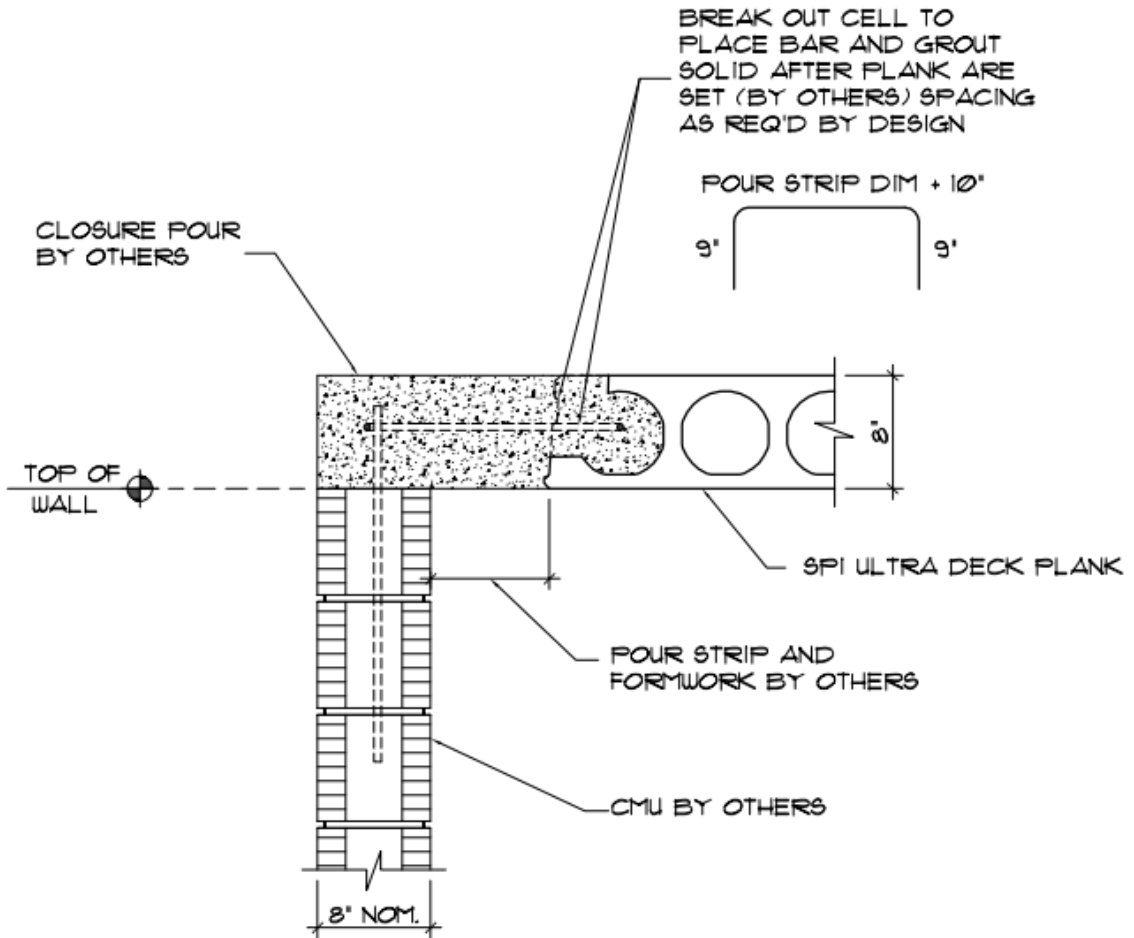
**PLANK • NON-BEARING WALL w/POUR STRIP
STANDARD ULTRA DECK HOLLOWCORE PLANK DETAIL**



**JOB N':
STANDARDS**

SHT. N':

ENGINEER OF RECORD
VERIFY IF ADEQUATE
FOR DIAPHRAGM



PLANK • NON-BEARING WALL w/POUR STRIP STANDARD ULTRA DECK HOLLOWCORE PLANK DETAIL

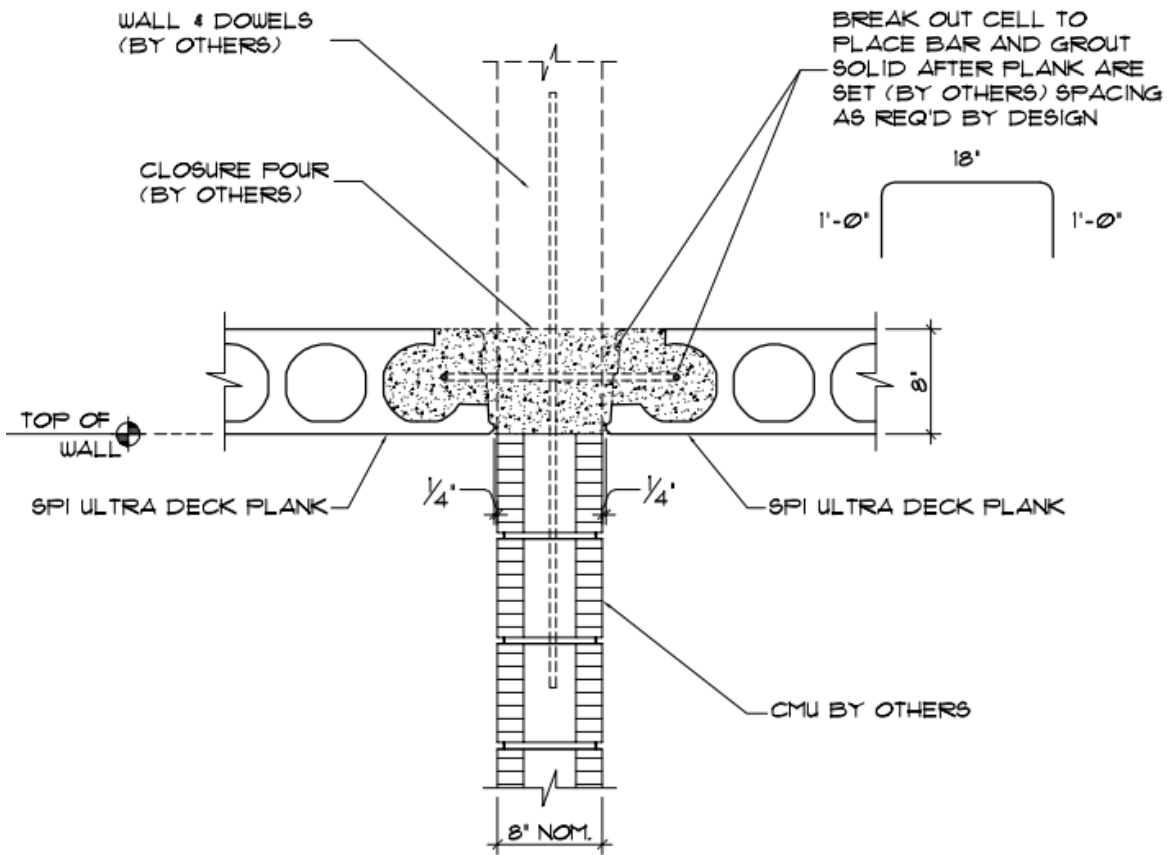


JOB N':
STANDARDS

SHT. N':

15

ENGINEER OF RECORD VERIFY
IF ADEQUATE FOR DIAPHRAGM



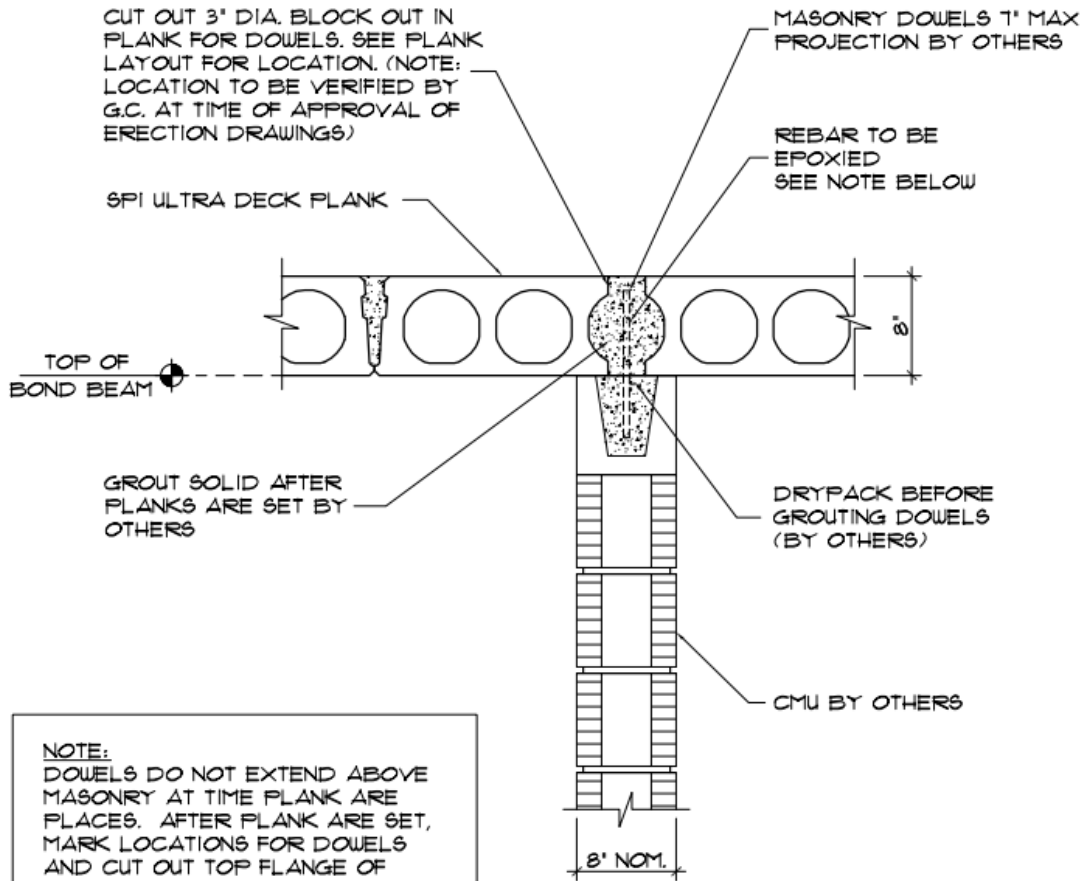
PLANK • NON-BEARING WALL w/POUR STRIP
STANDARD ULTRA DECK HOLLOWCORE PLANK DETAIL



JOB N':
STANDARDS

SHT. N':

16



NOTE:
 DOWELS DO NOT EXTEND ABOVE MASONRY AT TIME PLANK ARE PLACES. AFTER PLANK ARE SET, MARK LOCATIONS FOR DOWELS AND CUT OUT TOP FLANGE OF HOLLOWCORE DRILL THRU THE BOTTOM FLANGE A MIN. OF 6' INTO THE BOND BEAM. EPOXY DOWELS INTO BOND BEAM AND THEN GROUT AROUND DOWELS IN THE PLANK. THIS SYSTEM MUST BE APPROVED BY THE ENGINEER OF RECORD.

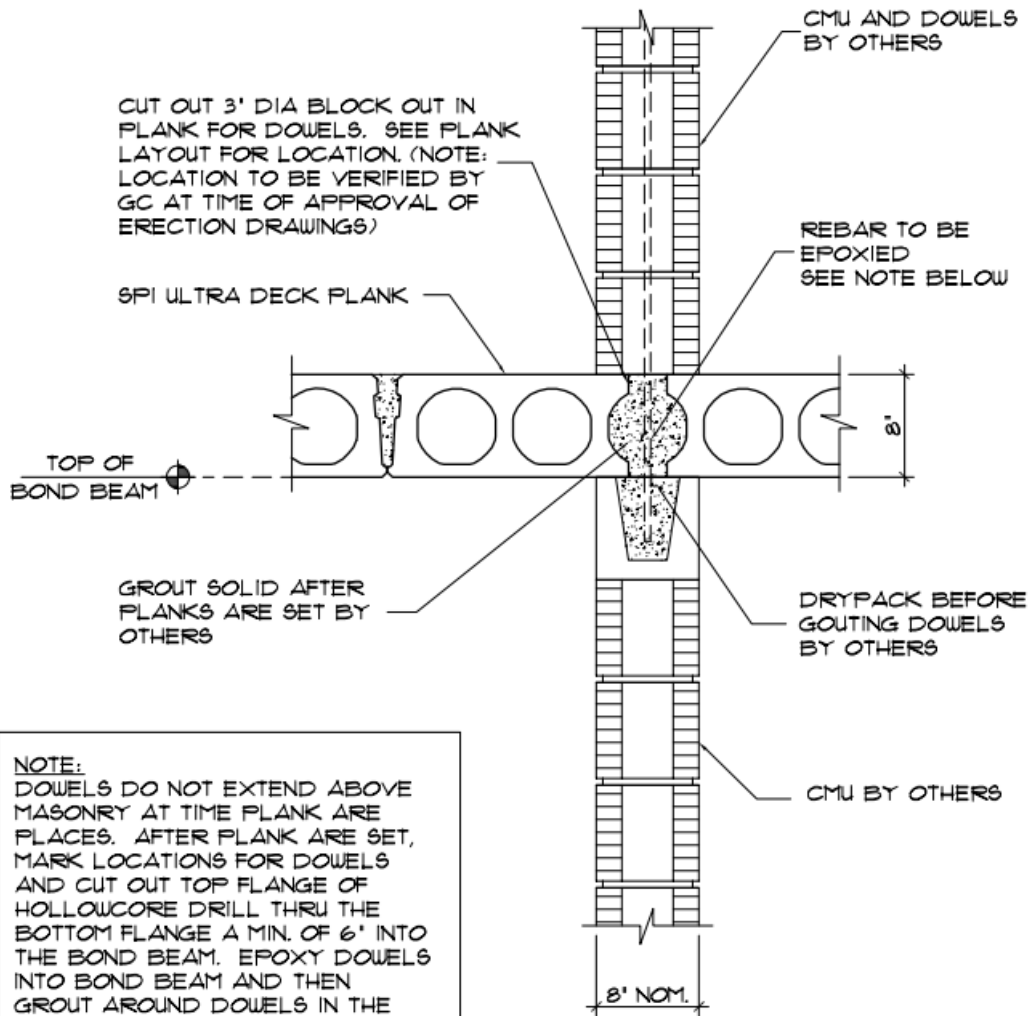
PLANK • NON-BEARING SHEARWALL STANDARD ULTRA DECK HOLLOWCORE PLANK DETAIL



**JOB N':
 STANDARDS**

SHT. N':

17



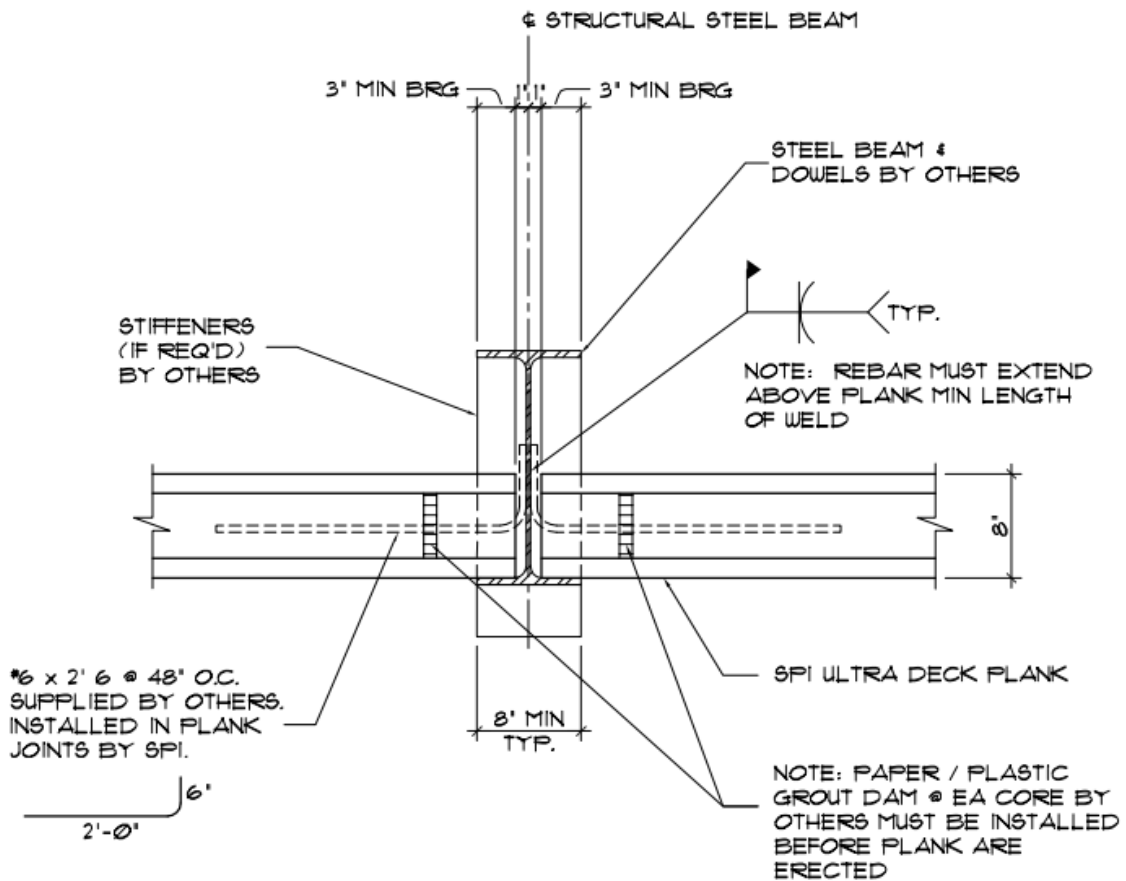
NOTE:
 DOWELS DO NOT EXTEND ABOVE MASONRY AT TIME PLANK ARE PLACES. AFTER PLANK ARE SET, MARK LOCATIONS FOR DOWELS AND CUT OUT TOP FLANGE OF HOLLOWCORE DRILL THRU THE BOTTOM FLANGE A MIN. OF 6' INTO THE BOND BEAM. EPOXY DOWELS INTO BOND BEAM AND THEN GROUT AROUND DOWELS IN THE PLANK. THIS SYSTEM MUST BE APPROVED BY THE ENGINEER OF RECORD.

PLANK • NON-BEARING SHEARWALL STANDARD ULTRA DECK HOLLOWCORE PLANK DETAIL



**JOB N':
 STANDARDS**

SHT. N':



NOTES:

MINIMUM BEARING WIDTH
 REQUIRED EACH SIDE = 3'

MINIMUM BEAM FLANGE WIDTH =
 8" UNLESS OTHERWISE
 APPROVED

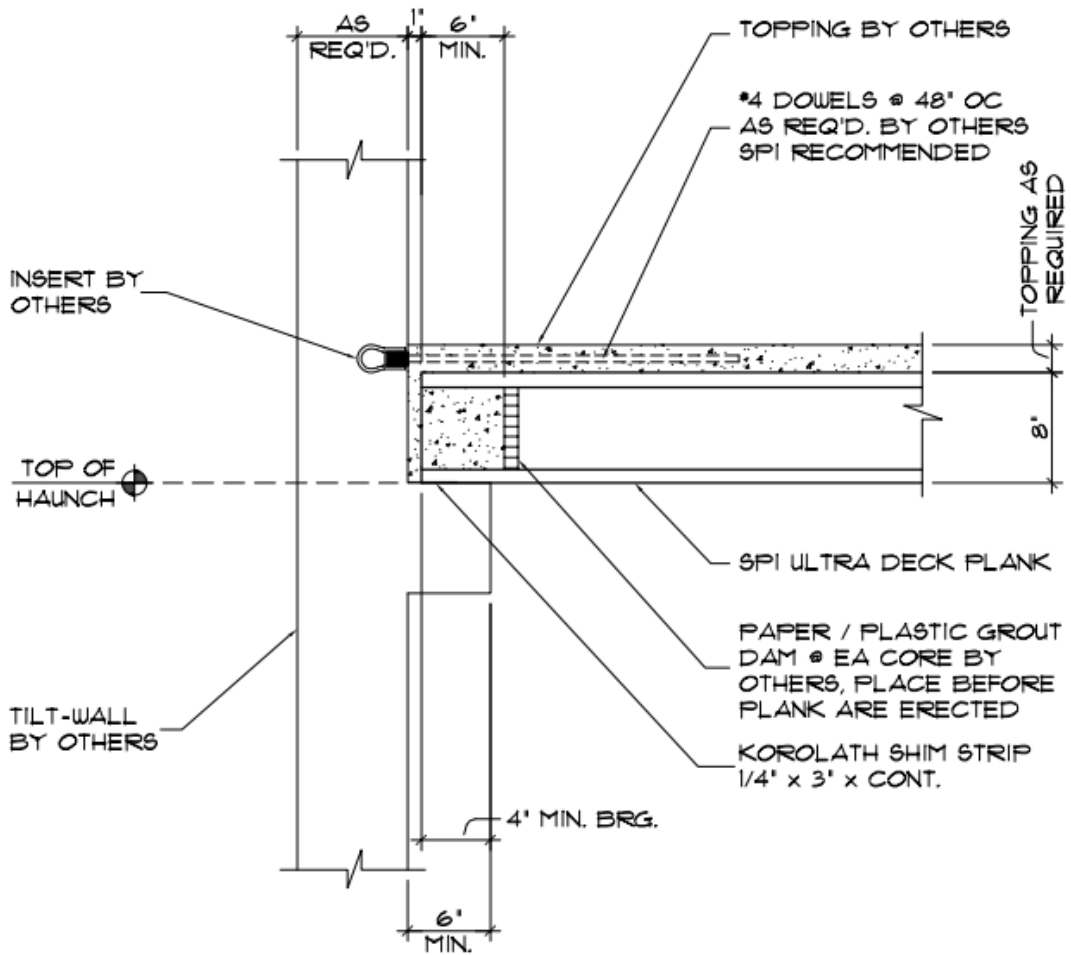
**PLANK BEARING EACH SIDE OF STEEL BEAM
 STANDARD ULTRA DECK HOLLOWCORE PLANK DETAIL**



**JOB N':
 STANDARDS**

SHT. N':

ENGINEER OF RECORD
VERIFY IF ADEQUATE FOR
DIAPHRAGM



PLANK BRG. ON TILT-WALL HAUNCH AT FLOOR STANDARD ULTRA DECK HOLLOWCORE PLANK DETAIL

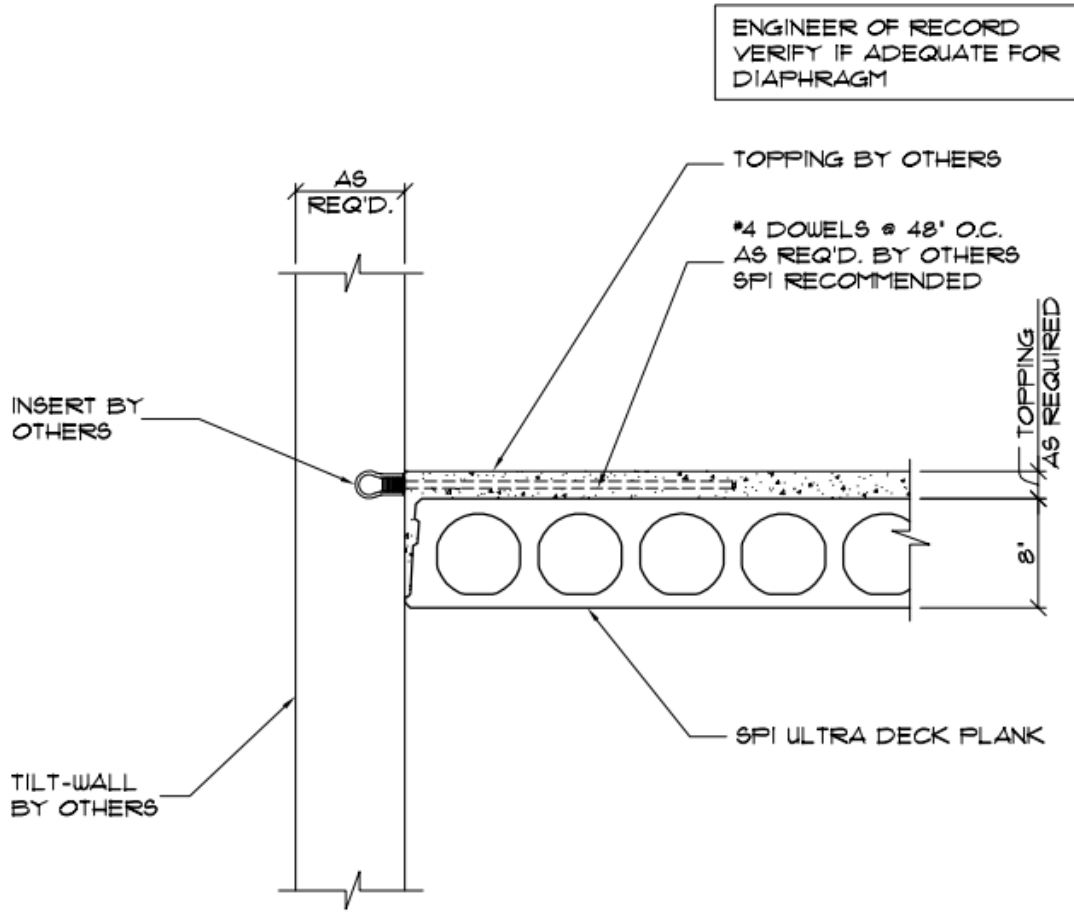


SPI STRUCTURAL
PRESTRESSED
INDUSTRIES, INC.

JOB N':
STANDARDS

SHT. N':

20



**PLANK CONNECTING TO TILT-WALL AT FLOOR
STANDARD ULTRA DECK HOLLOWCORE PLANK DETAIL**

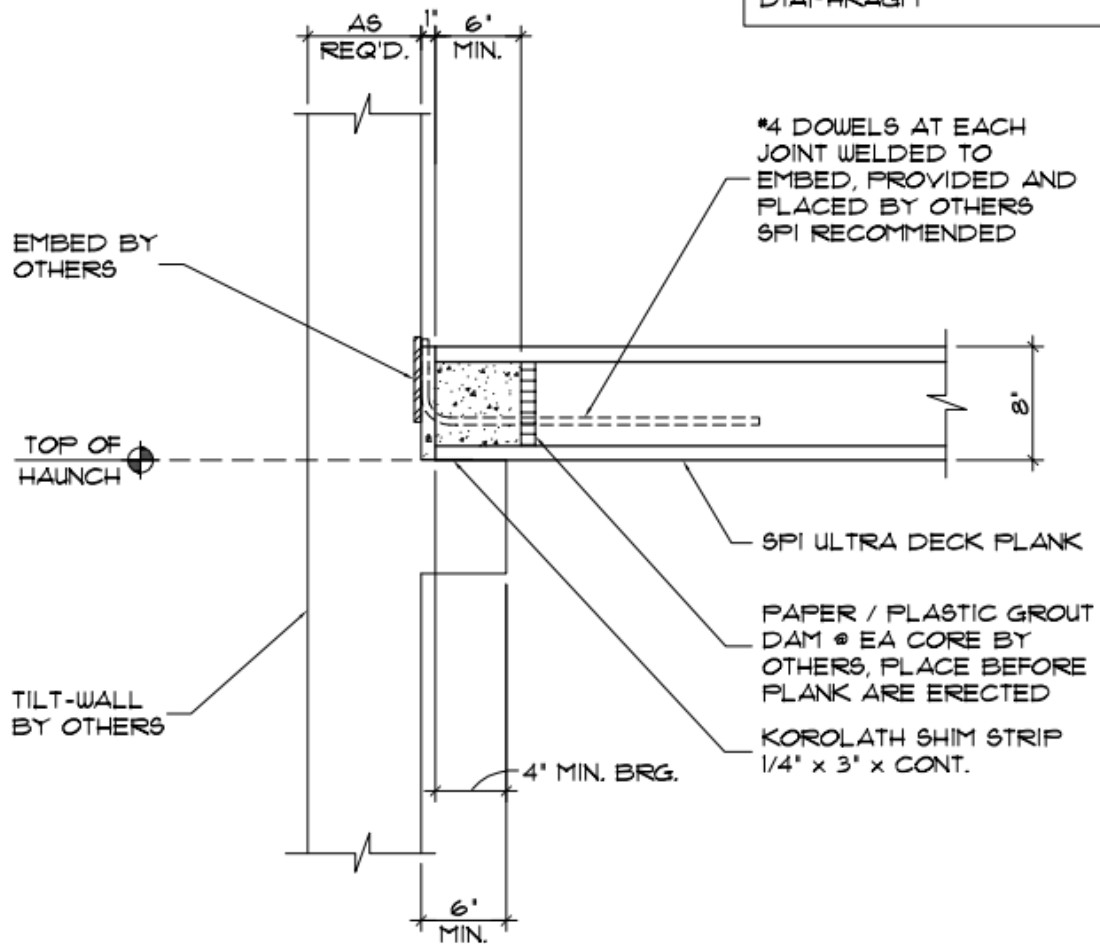


**JOB N':
STANDARDS**

SHT. N':

21

ENGINEER OF RECORD
VERIFY IF ADEQUATE FOR
DIAPHRAGM

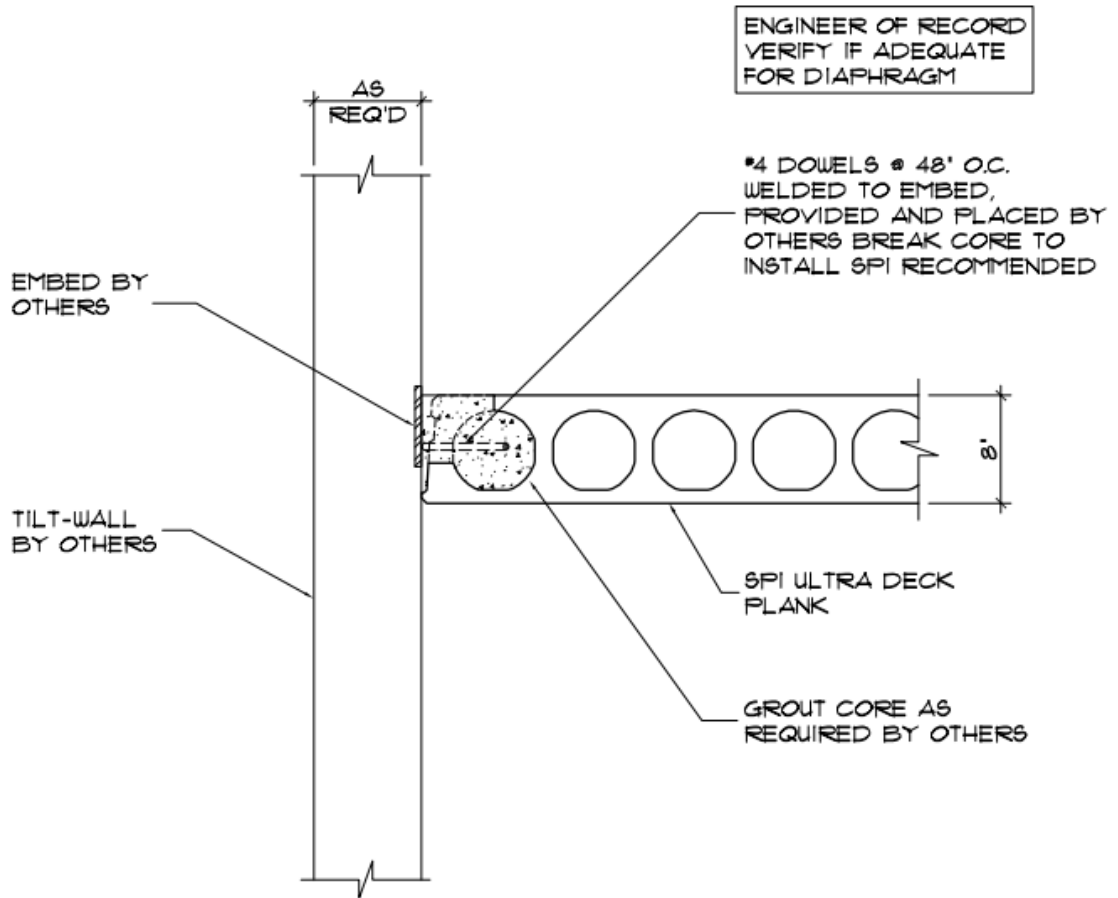


PLANK BRG ON TILT-WALL HAUNCH AT ROOF
STANDARD ULTRA DECK HOLLOWCORE PLANK DETAIL



JOB N':
STANDARDS

SHT. N':



PLANK AT P/C WALL AT ROOF
STANDARD ULTRA DECK HOLLOWCORE PLANK DETAIL



JOB N':
STANDARDS

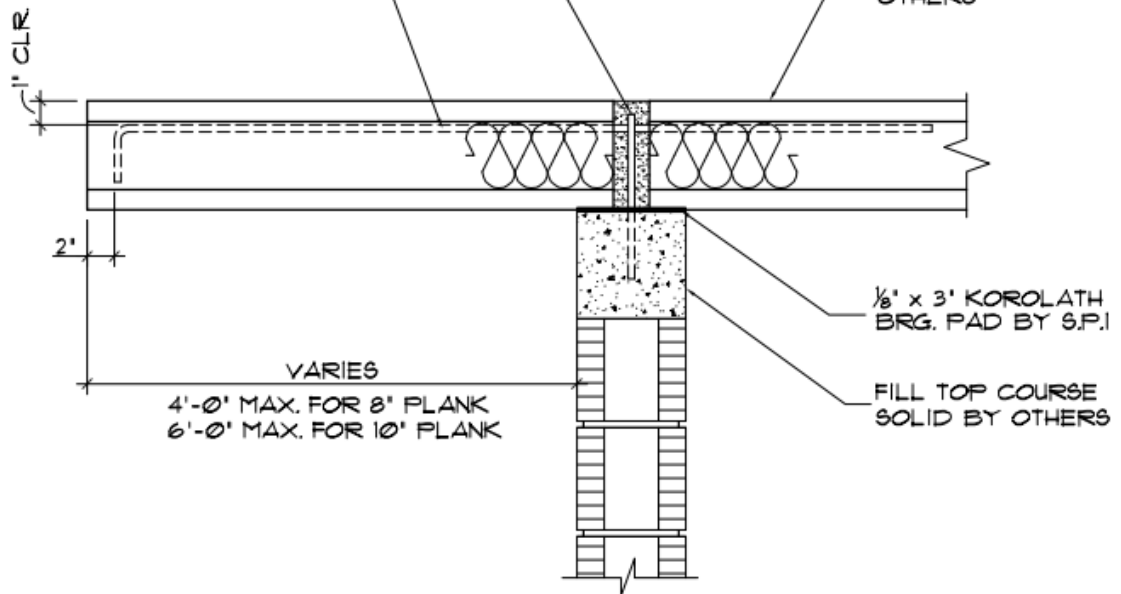
SHT. N':

23

*4 DOWEL DRILLED AND GROUTED
AFTER ERECTION BY OTHERS (IF
CONNECTION IS REQUIRED)

*4 CANT. REINF. AS REQ'D.
(FILL CORE SOLID)

CORES FILLED WITH
INSULATION OVER
EXTERIOR WALL BY
OTHERS



CANTILEVER (BALCONIES) STANDARD ULTRA DECK HOLLOWCORE PLANK DETAIL

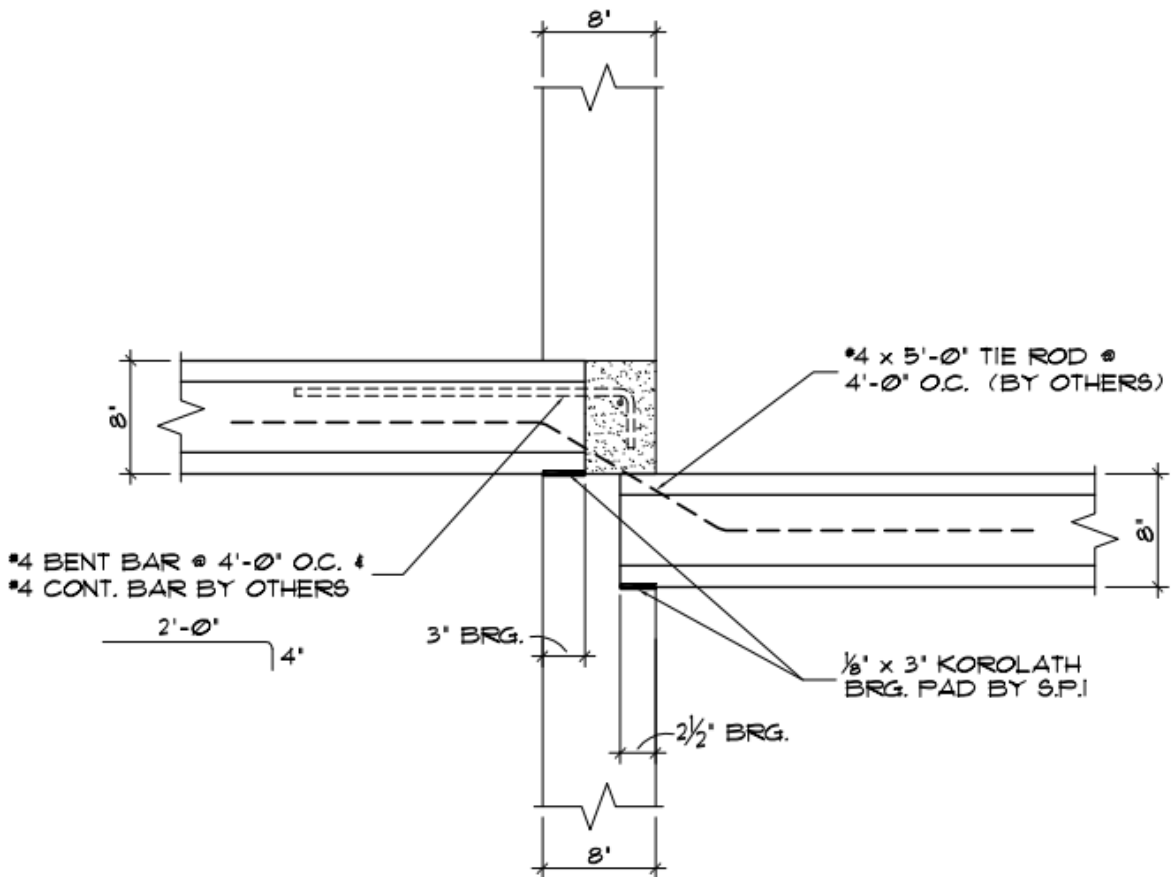


SPI STRUCTURAL
PRESTRESSED
INDUSTRIES, INC.

JOB N':
STANDARDS

SHT. N':

24



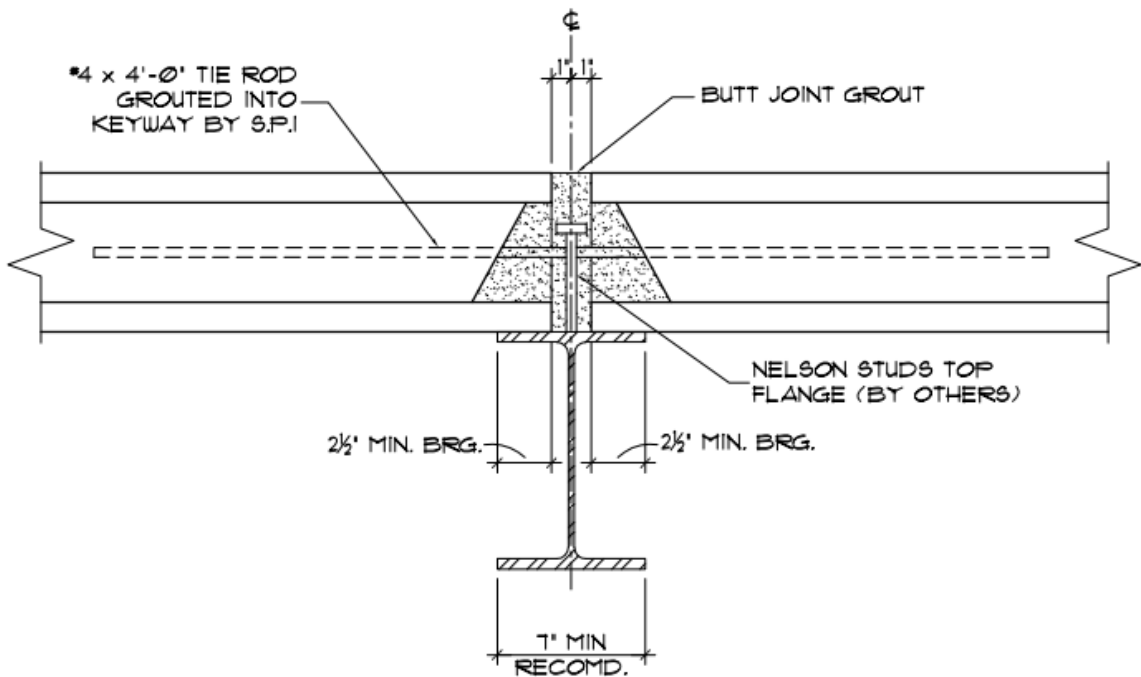
INT. BRG. WALL WITH 8 IN. STEP DOWN AT TYP FLR
STANDARD ULTRA DECK HOLLOWCORE PLANK DETAIL



JOB N':
 STANDARDS

SHT. N':

25



INTERIOR BEARING ON STEEL

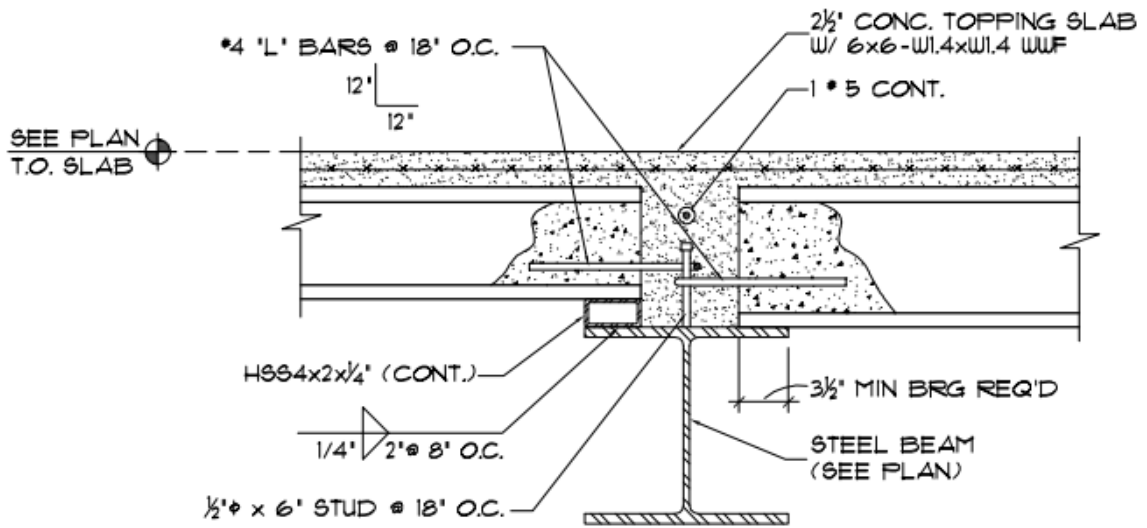
STANDARD ULTRA DECK HOLLOWCORE PLANK DETAIL



JOB N':
STANDARDS

SHT. N':

26



PLANK BEARING EACH SIDE OF STEEL BEAM
STANDARD ULTRA DECK HOLLOWCORE PLANK DETAIL



JOB N':
STANDARDS

SHT. N':

27