

Fundamentals of Equine-Assisted Learning (EAL) for Corporate™ (FOEALC™)

Accelerated Certification Training



An accelerated, in-person, two-day certification for EAL Corporate Workshop Instructors featuring hands-on learning, design, and facilitation, thereby preparing Instructors to design, develop and deliver EAL workshops for corporate individuals and groups. Additionally, an optional, preceding one-day certification for those responsible for selling EAL corporate workshops.

MAY 7-8, 2026: Fundamentals of EAL for Corporate™

SUMMARY: *Learn to design, develop, and deliver your own EAL Corporate Workshops*

PRIMARY AUDIENCE: Those responsible for developing and delivering workshops

MAY 6, 2026: Fundamentals of Selling EAL for Corporate™

SUMMARY: *Learn to find and attract local organizations & manage the sales process*

PRIMARY AUDIENCE: Those responsible for selling EAL Corporate Workshops

WHAT TO EXPECT FROM THIS TRAINING

- Learn from world class corporate instructors and training designers specializing in EAL instructional design, human-animal bond, EAL Corporate Workshop delivery and EAL Corporate Workshop sales
- Learn our proprietary, proven, and repeatable instructional design methodology to design and build your own EAL Corporate workshops, enabling you to build and deliver your own EAL classroom and arena/equine content
- Learn the trending leadership development and team building topics corporate groups are focused on, and how to link those to equine parallels and activities for meaningful experiential learning; 30 classroom & equine activities provided
- Learn a proven approach to selling EAL Corporate Workshops, including pricing, proposals, marketing, managing the sales process and mapping client needs to learning outcomes*
- Learn how to market, price and sell EAL Corporate Workshops to recoup your training & certification investment in less than one year*
- Experience hands-on practice to design, develop, deliver, and sell* EAL workshops for corporate individuals and groups
- Network with others providing EAL Corporate Workshops within the class and as a Member of our EAL Community of Practice (1 Year Membership included – applies to new Members only)
- Tap into your CliftonStrengths® to bring your most authentic self to EAL Corporate Workshop development, delivery, and sales
- Earn PATH Intl. CEUs and credit toward EALF-O Microcredential

- Experience the only EAL Instructor Training & Certification developed by Certified Corporate Coaches & Human-Animal Bond Researchers, approved by Global Human Resources accrediting organizations, and geared specifically toward EAL for Corporate individuals and groups
- Learn to apply our proprietary instructional design method to develop and deliver your own EAL Corporate Workshops
- Gain hands-on learning and practical experience in a small-group setting at an accelerated pace
- Explore example classroom and horse activities proven to help organizations with relevant teambuilding and leadership development topics
- Leverage the step-by-step processes, templates, materials & checklists that make it easy to develop, deliver & sell EAL workshops
- Learn to apply our proprietary Selling Process, proven to help you attract local organizations, manage the sales process, and convert prospects into clients*

For more information: 855.532.3454
info@myleadershipadventures.com

Click [HERE](#) to Pre-Enroll & hold your space - complete form & select training option(s). Hurry, class max = 15!

*covered in the Selling Course



REGISTRATION

- 2-day Fundamentals of EAL for Corporate (May 7-8, 2026)
 - Focus = Developing & Delivering EAL Corporate Workshops
 - \$3,500 USD per attendee
- 1-day Fundamentals of Selling EAL for Corporate (May 6, 2026)
 - Focus = Selling EAL Corporate Workshops
 - \$1,750 USD per attendee
- 3-day Fundamentals of EAL for Corporate + Selling EAL for Corporate (May 6-8, 2026)
 - \$4,725 USD per attendee (reflects 10% discount for same person attending all 3 days)
- Must complete prerequisites prior to the training

HOST LOCATION

Storm Harbor Equestrian Center

PATH Intl. Premier Accredited Center

245 Harmony Rd, Slippery Rock, PA 16057
(less than one hour drive from PIT Airport)



INSTRUCTORS

Jeff Arnold

855.532.3454 | jeffrey.arnold@myleadershipadventures.com

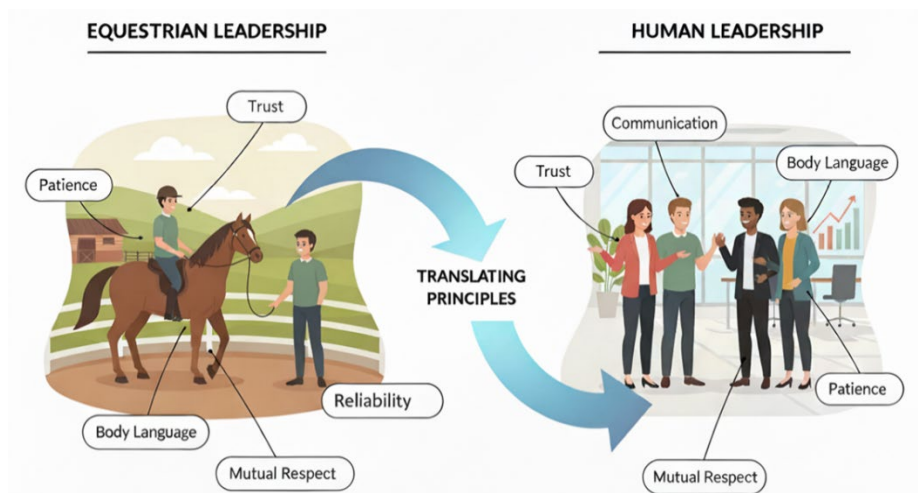
Kimberly Tumlin, PhD, MS, MPH

859.325.1599 | kimberly.tumlin@uky.edu

AIR TRAVEL

Pittsburgh International Airport (PIT)

See website for rental cars, under "Ground Transportation"





LODGING many hotels nearby, including:

Fairfield by Marriott Inn & Suites Slippery Rock

1000 University Parkway, Slippery Rock, PA 16057

1.5 miles from training location

(724) 406-0535

Applebutter Inn

666 Centreville Pike, Slippery Rock, PA 16057

1.9 miles from training location

(724) 794-1844

Hampton Inn & Suites Grove City

4 Holiday Blvd, Mercer, PA 16137

10 miles from training location

(724) 748-5744



SCHEDULE

8:30 a.m. – 4:30 p.m. daily

(evening arrival on the day prior to training required)

MEALS

Coffee, water, snacks and lunch provided during each training day



ENVIRONMENT

Plan for 50% classroom and 50% indoor arena (not heated); daily temperature ranges for Slippery Rock, PA in early May range from average highs of 65-73 degrees and average lows of 44-53 degrees (all Fahrenheit) – dress appropriately!

PREREQUISITES

- Become an EAL Community of Practice Member (included in Registration fee)
- Complete CliftonStrengths assessment 30 days prior to training (link/code provided with Registration for those who have not previously completed the assessment)

LOCAL ATTRACTIONS

Explore the local [Slippery Rock community attractions!](#)

