



ALKO SEWING CENTER

www.alkosewing.com

Find us on Facebook

<https://www.facebook.com/AlkoSewingCenter/>

440-951-3435

Welcome to

January

Sew It All Club!

New! From Dakota Collectables!



5X7 Hoop



I think these would be great for greeting cards! See how I make mine [HERE](#)







Fleece Wrap featured in [Wrapped in Embroidery](#)

Featured fabric is Polartec Classic 200: Double Velour

FREE Fleece Tip Sheet
[CLICK HERE](#)



Check out the “real” McCoy Polartec fleece yardage
available from Mill Yardage [HERE](#)

FUN with FLEECE!



**Yes! You can sew fleece on any sewing machine!
But . . . it helps to have some tricks up your sleeve**

Tips and techniques for fleece:

- I always begin by prewashing fabric according to manufacturer's directions. While fleece doesn't shrink, it's likely that it was stretched out a bit when rolled on the bolt. Washing brings it back to its original shape.
- Never allow an iron to touch fleece. Finger press seams open or to one side. Use lots of topstitching to tame seams, keep them flat, and add a sleek decorative touch at the same time.
- To find the right side of this fleece fabric, pull fabric along the selvedge edge. You'll see that it automatically rolls to the right side.
- Cut all pieces using a with nap layout. You can use straight or safety pins to mark top edge of each piece, placing pin on the right side.
- Before sewing, be sure to test stitches on your machine using remnants of fabric. Increase stitch length for all seams and hems. I like a length of 3.5 to 4.0. You can sew most seams with a standard presser foot. Switch to a walking foot if it helps you feed fabric layers more easily.

Watch the video for this Polar Fleece Jacket [HERE](#)

Want even more tips, tricks, & details???

Download coordinating instructions for the video on this page [HERE](#)

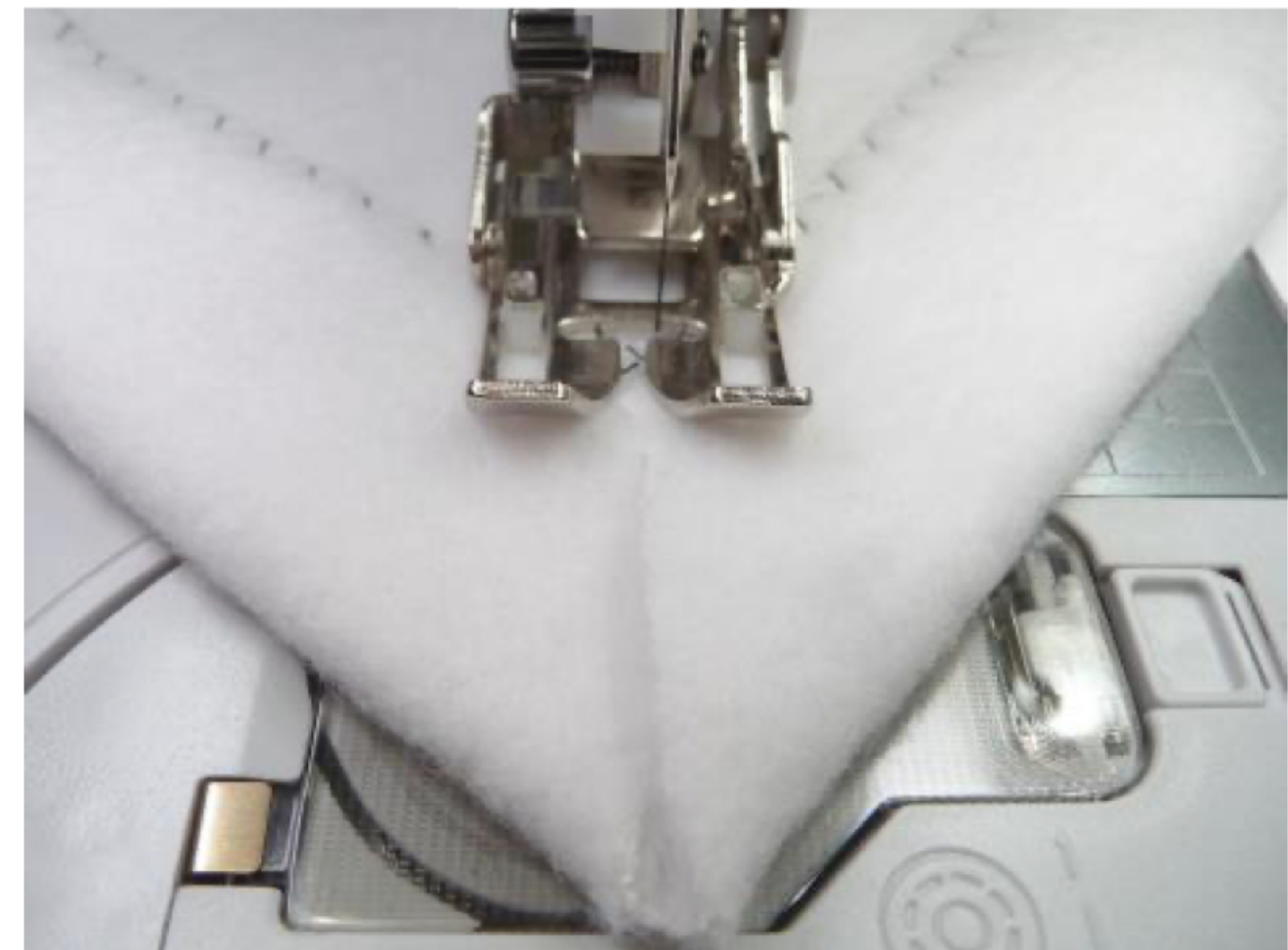
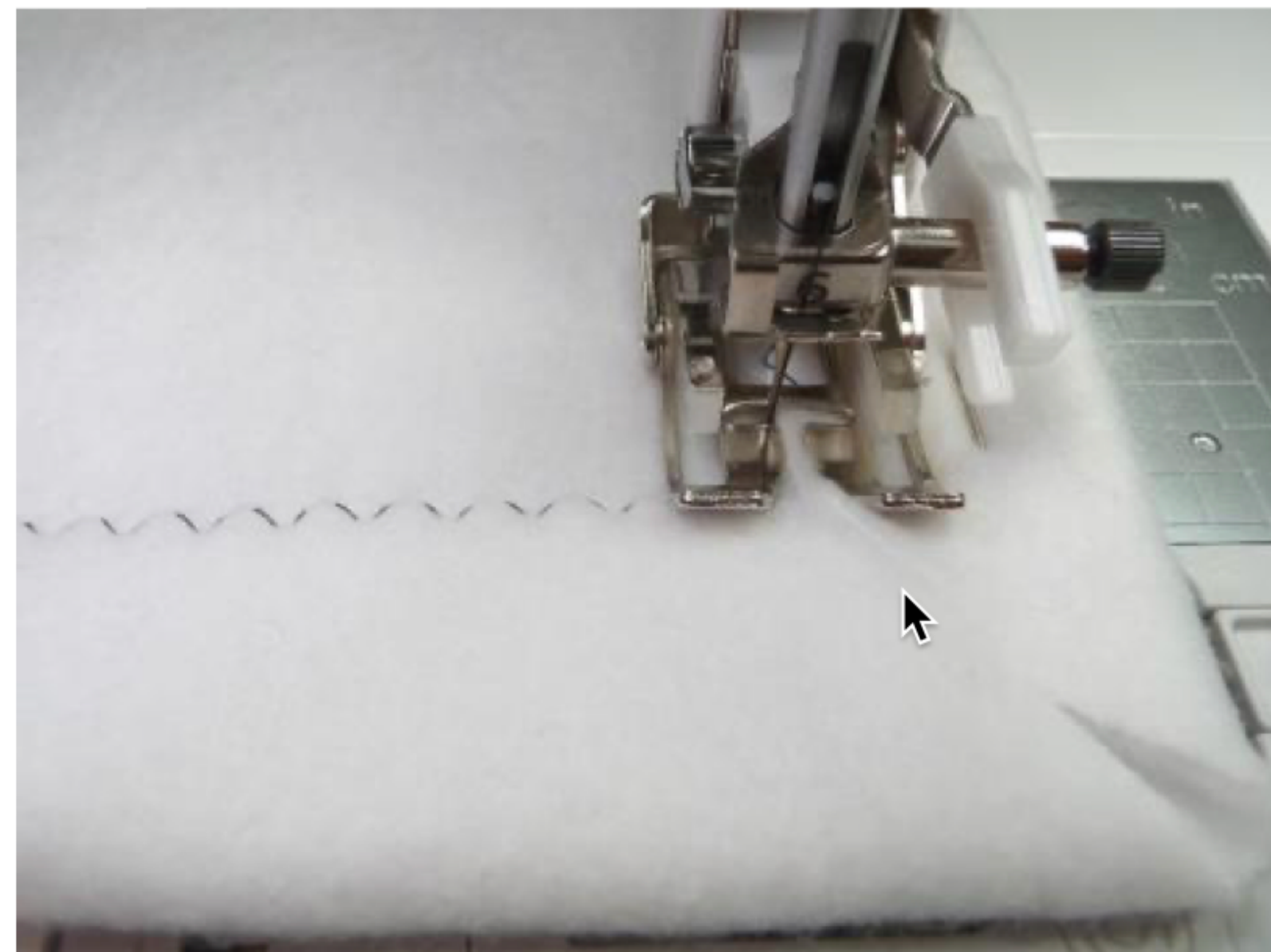
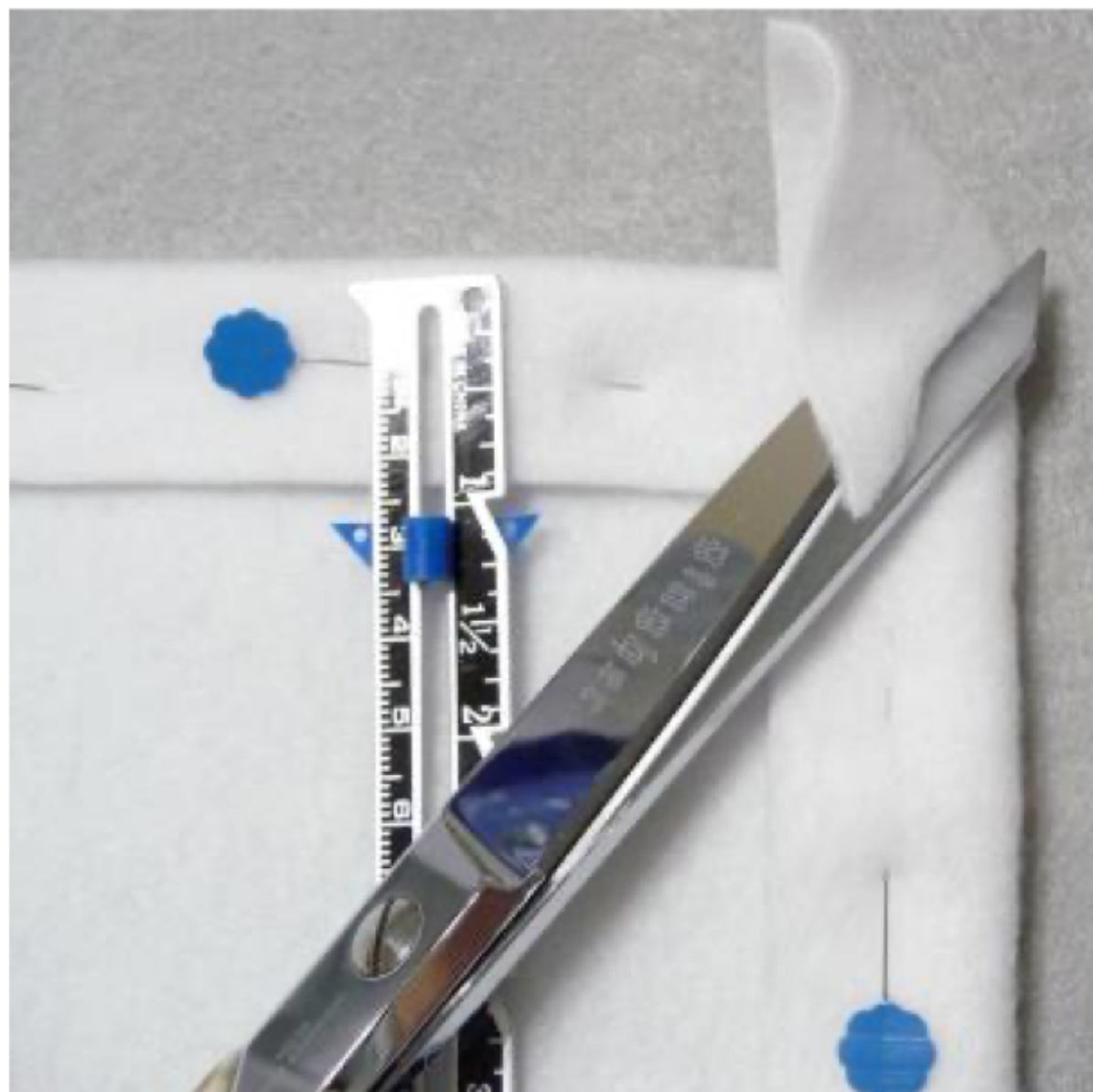


Note: Pattern is discontinued but may be found on some re-sale sites.

Featured fabric is Polartec Classic 200: Double Velour

- **Hemmed Edges:** Turn 1-inch of fleece to the wrong side and hem using a zigzag stitch with a width and length of 3.5. Miter the corners by trimming excess fleece and butting the raw edges together at the pointed end. Zigzag from end to end on each of the mitered corners to finish. For best results, stitch with the [closed toe walking foot](#) or a [digital dual feed foot](#). See steps below:

Note: Sample below was stitched with contrast thread used for better visibility.



Note: The blue hyperlinks on this page are not active.

Finishing Fleece Serger Style

Serge finished Edges: Set up your serger for a three-thread wide stitch. You can use standard serger thread or explore decorative thread options. Wooly poly or nylon is yet another possibility.

Lengthen the stitch slightly and test on scraps until you have a balanced stitch. Finish all edges by rounding off the corners and stitching continuously around the entire blanket, barely skimming the raw edge.

Overlap stitches slightly at the spot where they join, taking care that you don't cut threads that are already stitched.

Bury the thread tails and treat with a light dose of seam sealant if desired.



Video for this technique coming soon!



Let's Go Sew with Joanne Banko Resources:

Reach out to Joanne via her sewing and embroidery website: www.letsdosew.com

Email: joannebanko@letsdosew.com

Joanne Banko's blog: <https://www.letsdosew.com/joanne-bankos-blog>

Videos on my YouTube channel: <https://www.youtube.com/c/LetsGoSewWithJoanneBanko>

Free Let's Go Sew Tutorials & Tip Sheets [HERE](#)