



Quality Services

Laboratory accredited under ISO 17025 standard



Who we are

With more than a decade of experience in the sector, we specialize in inspection and non-destructive testing (NDT) in infrastructure, energy, and petrochemical projects. We take pride in being recognized for our highly qualified technical team, certified under international standards such as AWS, ASNT, and API.

In Mexico, as a Non-Destructive Testing laboratory, we hold ISO 17025 accreditation by the Mexican Accreditation Entity (EMA).ACCREDITED MM-1896-238/25



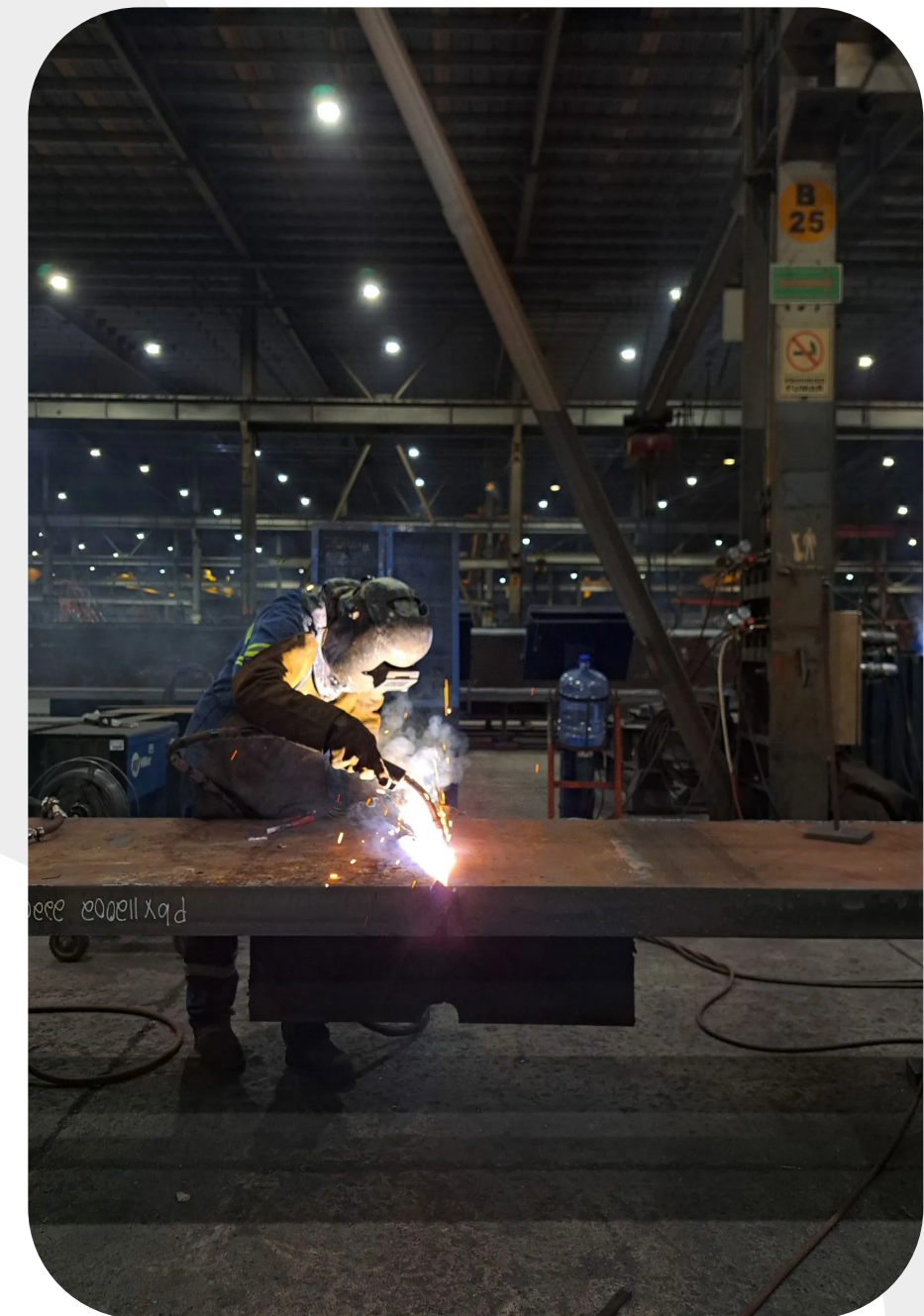
American
Petroleum
Institute

Mission

To provide the best inspection and welding supervision services throughout the different stages of construction projects, ensuring their quality and safety for the satisfaction of our clients.

Our philosophy

En SEND creemos que la calidad e integridad de nuestros profesionales son los pilares para el éxito de nuestros proyectos.



Our services

We offer a wide range of non-destructive testing (NDT) services designed to ensure the integrity and quality of materials used in construction, petrochemical, and energy projects. We have state-of-the-art equipment and a highly trained team, allowing us to provide services tailored to the specific needs of our clients.



PROCEDURE AND WELDER QUALIFICATION

Qualification of welding procedures WPS / PQR and welder qualification performed by personnel certified as SCWI / CWI under AWS, API, or ASME standards.



WELDER TRAINING

Practical/theoretical training for welders in GMAW, FCAW, GTAW, and SMAW processes, provided by experts and highly experienced welders in the field.



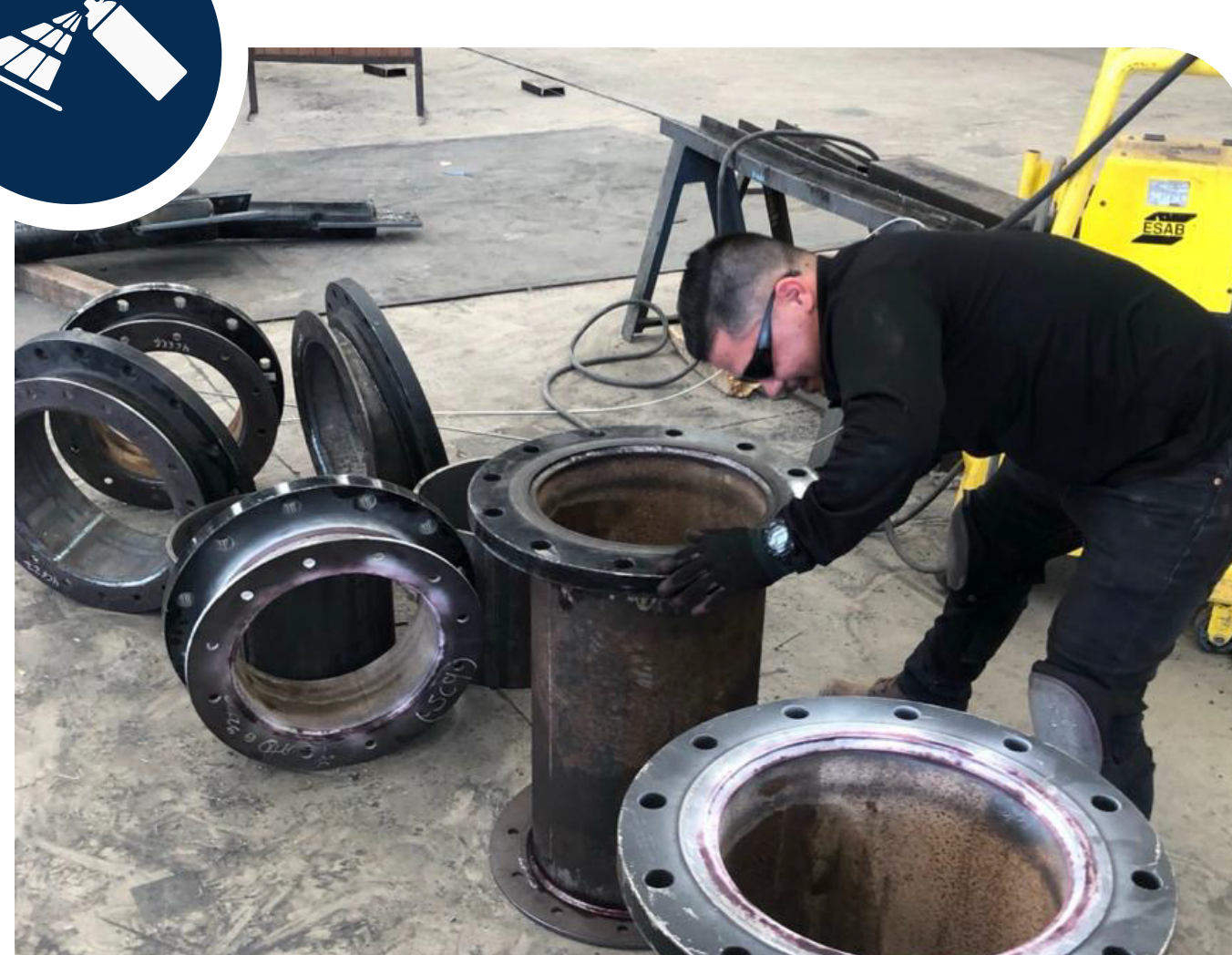
VISUAL INSPECTION

Direct and remote visual inspection services for structural components, pressure vessels, piping, and storage tanks performed by personnel certified as CWI and Level II under SNT-TC-1A.



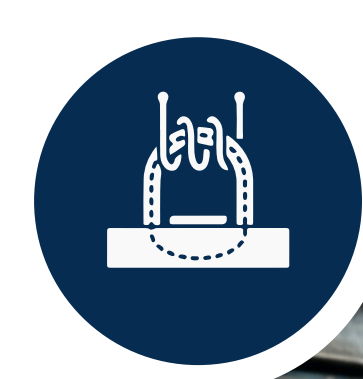
POSITIVE MATERIAL IDENTIFICATION

Positive Material Identification (PMI) helps determine the chemical composition of materials and identify the type of alloy in components such as pipes, valves, pumps, etc. It also helps verify that the components meet required specifications.



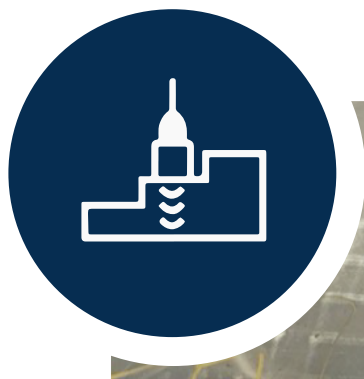
LIQUID PENETRANT TESTING

Visible or fluorescent examination for detecting surface flaws in welded components, castings, structural components, pressure vessels, piping, and storage tanks, performed by Level II certified personnel under SNT-TC-1A.



MAGNETIC PARTICLES

Visible or fluorescent examination for detecting surface and subsurface flaws in welded components, castings, structural components, pressure vessels, piping, and storage tanks through magnetic field induction, performed by Level II certified personnel under SNT-TC-1A.



ULTRASONIC THICKNESS MEASUREMENT

Ultrasonic technique used to measure material thickness and obtain data such as nominal thickness, remaining life, and corrosion rate. Testing performed by Level II certified technicians under SNT-TC-1A.



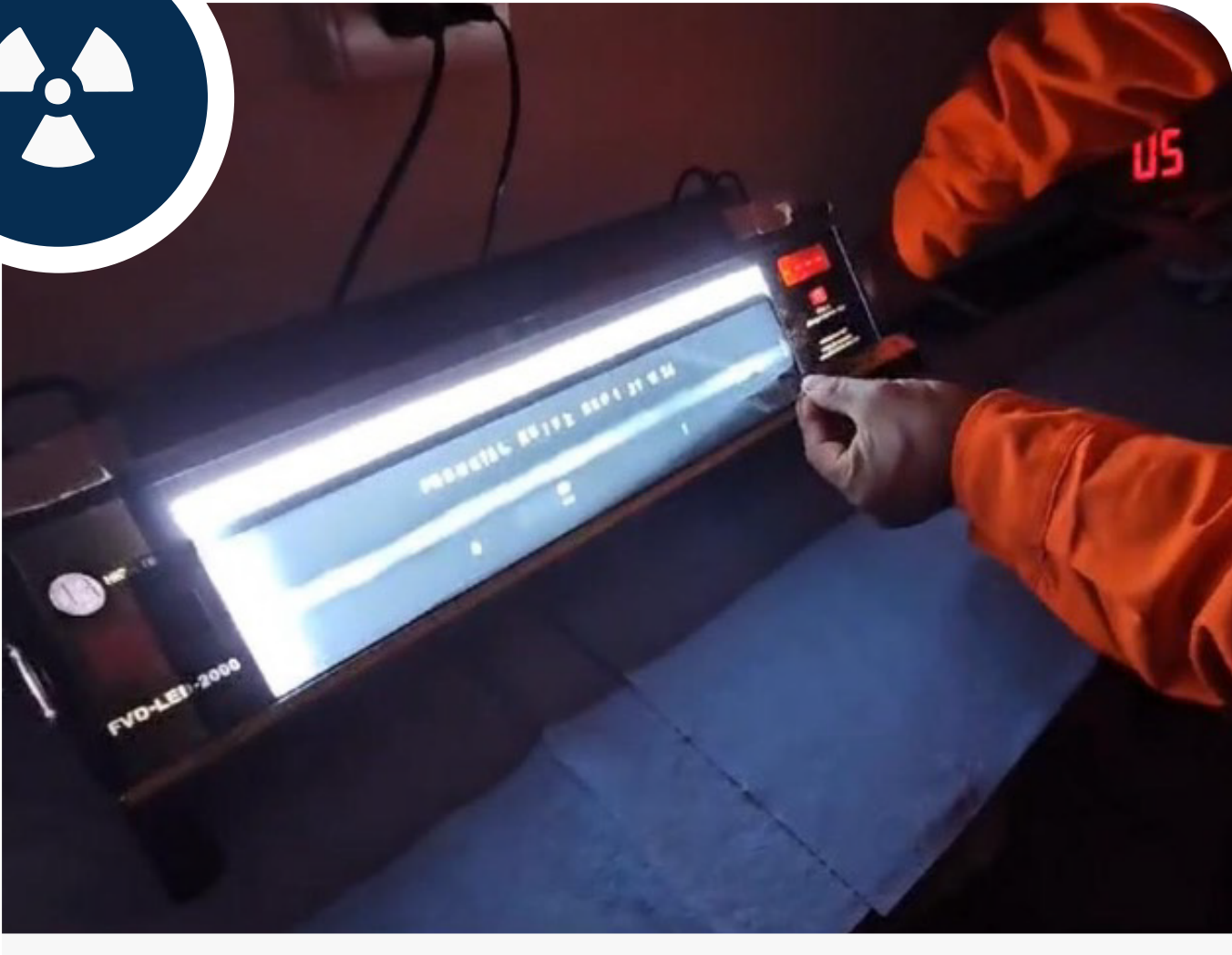
ULTRASONIC FLAW DETECTION

Volumetric examination using conventional ultrasonic waves to detect flaws in welded components, castings, structural components, pressure vessels, piping, and storage tanks, performed by Level II certified personnel under SNT-TC-1A.



PHASED ARRAY ULTRASONIC TESTING

Advanced industrial ultrasonic technique that allows inspection data to be stored and expands the ultrasonic beam through electronically controlled independent probes.



INDUSTRIAL RADIOGRAPHY

Volumetric examination using X-rays on welded components, castings, structural components, pressure vessels, piping, and storage tanks, performed by Level II certified personnel under SNT-TC-1A.



PREVENTIVE MAINTENANCE

Non-destructive testing helps detect failures in static and dynamic components. It reveals the condition of equipment and its functionality or potential failure. It is a useful tool to extend the lifespan of your equipment.



DESTRUCTIVE TESTING

We have an ISO 17025 accredited laboratory for destructive testing of materials to determine mechanical properties: tensile testing, compression testing, hardness testing, impact testing, macroetching, bend testing, and metallography.



COATING INSPECTION

Testing for coating inspection such as dry and wet film measurement, anchor profile, adhesion testing, and visual inspection performed by inspectors certified by AMPP.

Relevant Projects



GAS PUMPING STATION
PITIQUITO, SONORA



EXTENSIÓN TAMAZUNCHALE
PLANTA DE CICLO COMBINADO



BBVA TOWER
CD. DE MÉXICO, QC INSPECTION



CFE COMBINED CYCLE POWER PLANTS
MEXICALI Y SAN LUIS RÍO COLORADO



CONSTELLATIONS BREWERY
VERACRUZ



MINING MAINTENANCE SERVICES
GRUPO MÉXICO Y GRUPO PEÑALES

International



POWER PLANT
PANAMÁ, COOPER MINE



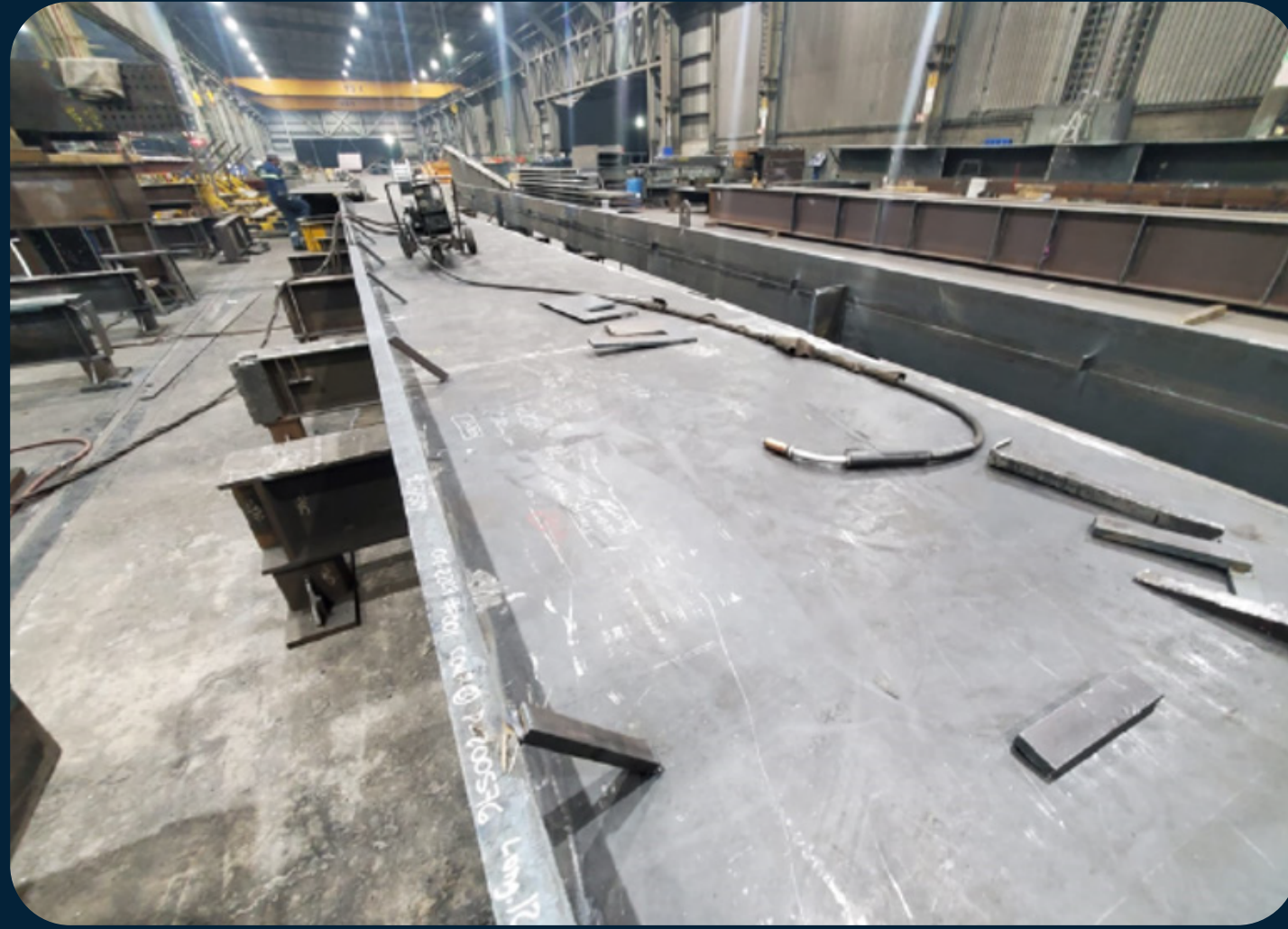
LAS VEGAS STADIUM
LAS VEGAS, NV.



WESTIN HOTEL RESORT
ANAHEIM, CALIFORNIA



JFK AIRPORT AND LAX AIRPORT EXPANSION
EUA



Contact

www.send-ndt.com

 SEND Soldadura e Inspección

 sendinspeccion

 MX (662) 107-3627 | US (520) 264-6963

 contacto@send-ndt.com

Address 14 de abril #155,
entre Tabasco y Campeche
Hermosillo, Sonora.

